



**NORTH SLOPE BOROUGH SCHOOL DISTRICT
MEMORANDUM**

TO: Robyn Burke, President
Members of the Board

THROUGH: David Vadiveloo, Superintendent *DvV*

THROUGH: Caitlin Santos, Director of Curriculum & Instruction *CS*

FROM: Ranel Gandia, Student Records Manager *RG*
Ian Acuna, Data Manager *IA*

DATE: February 3, 2025

SUBJECT: Enrollment and Attendance Report

Memo No. SB25-021
(Information Item)

NSBSD Policy Manual:

BP 5111, Admission: The School Board believes that all children should have the opportunity to receive a free appropriate public education. Staff shall encourage parents/guardians to enroll all school-aged children in school.

BP 5112, Attendance and Exceptions: NSBSD is committed to the academic success of all students. Consistent attendance is the first step in assisting students to achieve academic success.

NSBSD Strategic Plan Summary:

Culturally Responsive Instruction

Goal 2: All students perform at or above grade level

Issue Summary:

Research consistently shows that student attendance matters. Students with higher attendance rates are more likely to meet state academic standards, and graduate on time at higher rates. Educational outcomes reflect attendance even in the earliest grades, and then those gaps continue to widen into secondary (grades 6-12). While some students are more adversely affected by absences than others, it is clear that the effects of absences accumulate over time; attendance matters and every day counts. This is not to say that perfect attendance should be the goal 'no matter what.' We understand that students may miss school for a variety of reasons, and do not want to encourage sick children to attend when it is not appropriate to do so. In light of these factors, and the overwhelming amount of research, the district has set the attendance goal for all students at 80%.

K-12 Enrollment by Site			
School	Current Student Count	Attendance Report	23-24 January Student Count
Nunamiut School	97	78.72% (↑ 3.77%)	93
Tikiġaq School	201	76.90% (↑ 13.53%)	227
Nuiqsut Trapper School	140	70.86% (↑ 7.35%)	145
Kali School	66	83.18% (↑ 4.17%)	82
Aġak School	128	70.04% (↑ 13.93%)	136





Harold Kaveolook School	59	83.65% (↑ 20.85%)	56
Meade River School	78	70.78% (↑ 0.85%)	81
Barrow High School	243	74.82% (↑ 5.37%)	257
Eben Hopson Middle School	208	74.80% (↑ 7.64%)	222
Fred Ipalook Elementary School	401	79.94% (↑ 8.58%)	430
KIITA Learning Community	41	67.75% (↑ 10.11%)	42
Total	1662	76.20% (↑ 9.30%)	1771

K3 & K4 Enrollment by Site			
School	Current Student Count	Attendance Report	23-24 January Student Count
Nunamiut School	17	59.57% (↑ 11.42%)	12
Tikiġaq School	15	59.14% (↑ 14.85%)	15
Nuiqsut Trapper School	5	75.29% (↑ 31.00%)	15
Kali School	5	84.44% (↓ 3.06%)	10
Aġak School	8	58.33% (↑ 12.30%)	10
Harold Kaveolook School	4	46.05% (↓ 0.38%)	7
Meade River School	7	48.25% (↓ 8.75%)	8
Fred Ipalook Elementary School	76	60.68% (↑ 7.69%)	99
Total	137	60.61% (↑ 9.08%)	176

Night School Enrollment		
School	Current Student Count	23-24 January Student Count
KIITA Learning Community	6	16

The symbols (↑ and ↓) next to the data indicates if there was an increase or decrease since the last monthly report, the percentage next to the symbol indicates the amount it has increased or decreased by since the last monthly report.

Below, you will find two new charts. The first chart is a year over year enrollment summary starting with 2020. The second chart is showing year over year attendance throughout the school year. We provide this information so that trends can be seen, however please note that due to COVID related attendance policies, as well as the way that attendance was previously calculated, the attendance rate for the 2021-2022 school year is inflated. During that time, when a school was in “Red” status, or operating remotely, all attendance was “present.” During that school year, we also counted a student present daily, rather than period by period in Middle School and High School. This data is helpful however in order to see peaks and valleys by month.





Monthly Enrollment: NSBSD

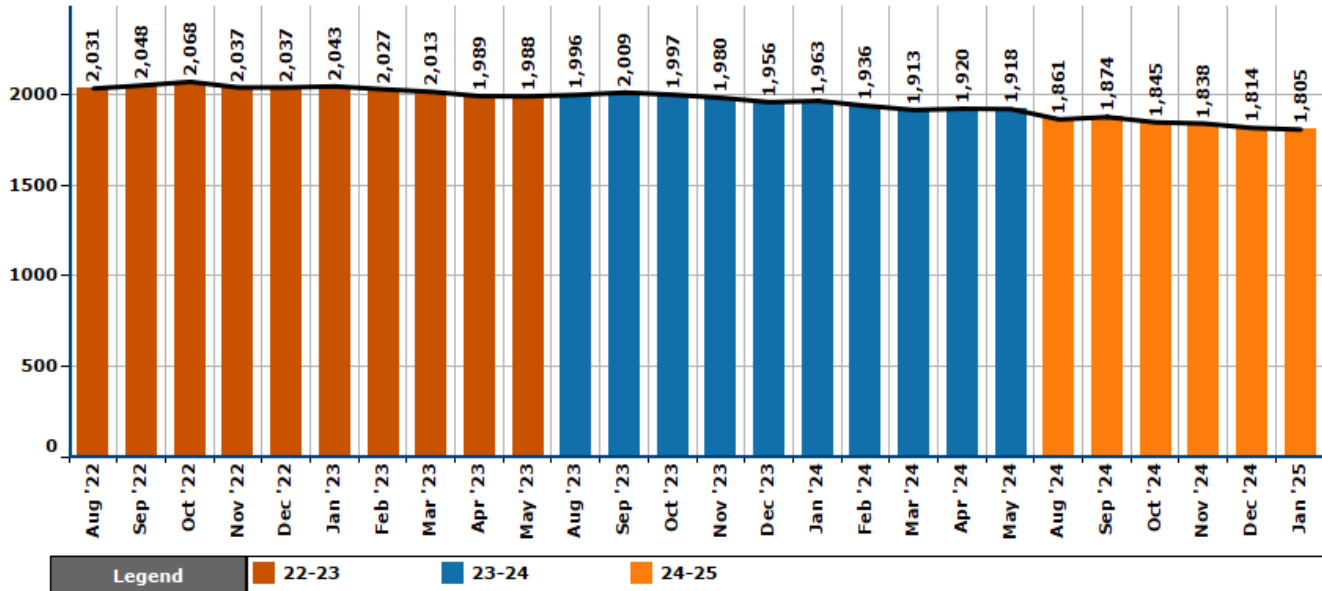
North Slope Borough School District



Filters
Year(s): Multiple valu...
Month(s): All
School(s): NSBSD
Grade(s): All
Download



NSBSD's Enrollment for 24-25, 23-24, 22-23



NSBSD Month-to-Month Changes

	22-23	23-24	24-25
Aug	2,031	1,996	1,861
Sep	2,048 ↑ 17 0.8%	2,009 ↑ 13 0.7%	1,874 ↑ 13 0.7%
Oct	2,068 ↑ 20 1.0%	1,997 ↓ 12 -0.6%	1,845 ↓ 29 -1.5%
Nov	2,037 ↓ 31 -1.5%	1,980 ↓ 17 -0.9%	1,838 ↓ 7 -0.4%
Dec	2,037 - -	1,956 ↓ 24 -1.2%	1,814 ↓ 24 -1.3%
Jan	2,043 ↑ 6 0.3%	1,963 ↑ 7 0.4%	1,805 ↓ 9 -0.5%
Feb	2,027 ↓ 16 -0.8%	1,936 ↓ 27 -1.4%	
Mar	2,013 ↓ 14 -0.7%	1,913 ↓ 23 -1.2%	
Apr	1,989 ↓ 24 -1.2%	1,920 ↑ 7 0.4%	
May	1,988 ↓ 1 -0.1%	1,918 ↓ 2 -0.1%	

NSBSD Year-to-Year Changes

	22-23	23-24	24-25
Aug	2,031	1,996 ↓ 35 -1.7%	1,861 ↓ 135 -6.8%
Sep	2,048	2,009 ↓ 39 -1.9%	1,874 ↓ 135 -6.7%
Oct	2,068	1,997 ↓ 71 -3.4%	1,845 ↓ 152 -7.6%
Nov	2,037	1,980 ↓ 57 -2.8%	1,838 ↓ 142 -7.2%
Dec	2,037	1,956 ↓ 81 -4.0%	1,814 ↓ 142 -7.3%
Jan	2,043	1,963 ↓ 80 -3.9%	1,805 ↓ 158 -8.0%
Feb	2,027	1,936 ↓ 91 -4.5%	
Mar	2,013	1,913 ↓ 100 -5.0%	
Apr	1,989	1,920 ↓ 69 -3.5%	
May	1,988	1,918 ↓ 70 -3.5%	



Monthly Attendance: NSBSD

North Slope Borough School District

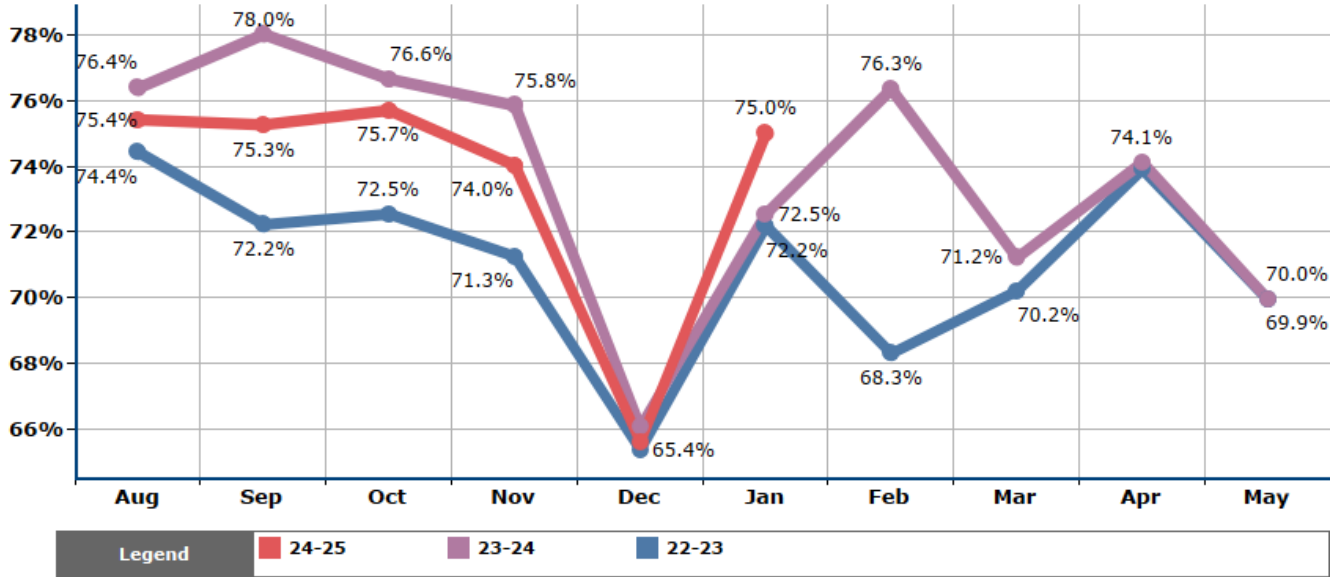


Filters
Year(s): Multiple valu...
Month(s): All
School: NSBSD
Grade: All
Download

Looking for daily & weekly attendance? [Click here.](#)



NSBSD's 24-25, 23-24, 22-23 Monthly Attendance for All



NSBSD Month-to-Month Changes

	22-23	23-24	24-25
Aug	74.4%	76.4%	75.4%
Sep	72.2%	78.0%	75.3%
Oct	72.5%	76.6%	75.7%
Nov	71.3%	75.8%	74.0%
Dec	65.4%	66.1%	65.6%
Jan	72.2%	72.5%	75.0%
Feb	68.3%	76.3%	71.2%
Mar	70.2%	71.2%	70.2%
Apr	73.9%	74.1%	74.1%
May	69.9%	70.0%	69.9%

NSBSD Year-to-Year Changes

	22-23	23-24	24-25
Aug	74.4%	76.4%	75.4%
Sep	72.2%	78.0%	75.3%
Oct	72.5%	76.6%	75.7%
Nov	71.3%	75.8%	74.0%
Dec	65.4%	66.1%	65.6%
Jan	72.2%	72.5%	75.0%
Feb	68.3%	76.3%	71.2%
Mar	70.2%	71.2%	70.2%
Apr	73.9%	74.1%	74.1%
May	69.9%	70.0%	69.9%

Signature: DS Vadiveloo
DS Vadiveloo (Feb 13, 2025 15:14 AKST)
Email: david.vadiveloo@nsbsd.org

Signature: Caitlin Santos
Caitlin Santos (Feb 12, 2025 14:15 AKST)
Email: Caitlin.Santos@nsbsd.org