



Parkrose School District #3  
 As Per Board Policy DLC/DLC-AR  
 Request for Extended Travel  
 (Travel Outside 200 Miles)

The Parkrose School Board asks that extended travelers (or their supervisors) present for a few minutes at a Board meeting following their conference. Please make arrangements with the Board Secretary.

NAME: Christine Blouke      DATE June 14, 2021      DEPT/BUILDING Technology Dept.

PURPOSE: 2021 Synergy Connect Edupoint Users Conference

TRAVEL DETAILS: DESTINATION: Scottsdale, AZ      DATES: November 2-5, 2021

<i>ESTIMATED EXPENSES:</i>	<i>DESCRIPTION</i>	<i>COST</i>
TRAVEL	Airline Tickets	\$296.00
LODGING	Westin Kierland Resort & Spa 270.00 per night x 3 nights	\$ 810.00
PER DIEM	Conference provides meals Nov 3-5 Breakfast & Lunch      June 4 Dinner  Per Diem Nov 2 Breakfast,Lunch,Dinner \$66.00 Nov 3 Lunch,Dinner \$50.00	\$ 116.00
REGISTRATION	Early Bird Registration	\$550.00
OTHER	Supershuttle \$65.00 Non Stop One way	\$130.00
TOTAL		\$1,902.00

BUDGET SOURCE(S) NAME: 100.2660.0342      .180.000.000 → Travel Budget Code      Amount \$ 1,902.00

BUSINESS SERVICES DIRECTOR SIGNATURE: \_\_\_\_\_ DATE: 6/23/21

SUPERVISORS RECOMMENDATION AND COMMENTS: \_\_\_\_\_  
 \_\_\_\_\_  
 SUPERVISOR SIGNATURE \_\_\_\_\_ DATE: \_\_\_\_\_

SUPERINTENDENT/DESIGNEE RECOMMENDATIONS/COMMENTS:  
 \_\_\_\_\_  
 \_\_\_\_\_  
 SUPERINTENDENT/DESIGNEE SIGNATURE Migoff      DATE: 6/23/21

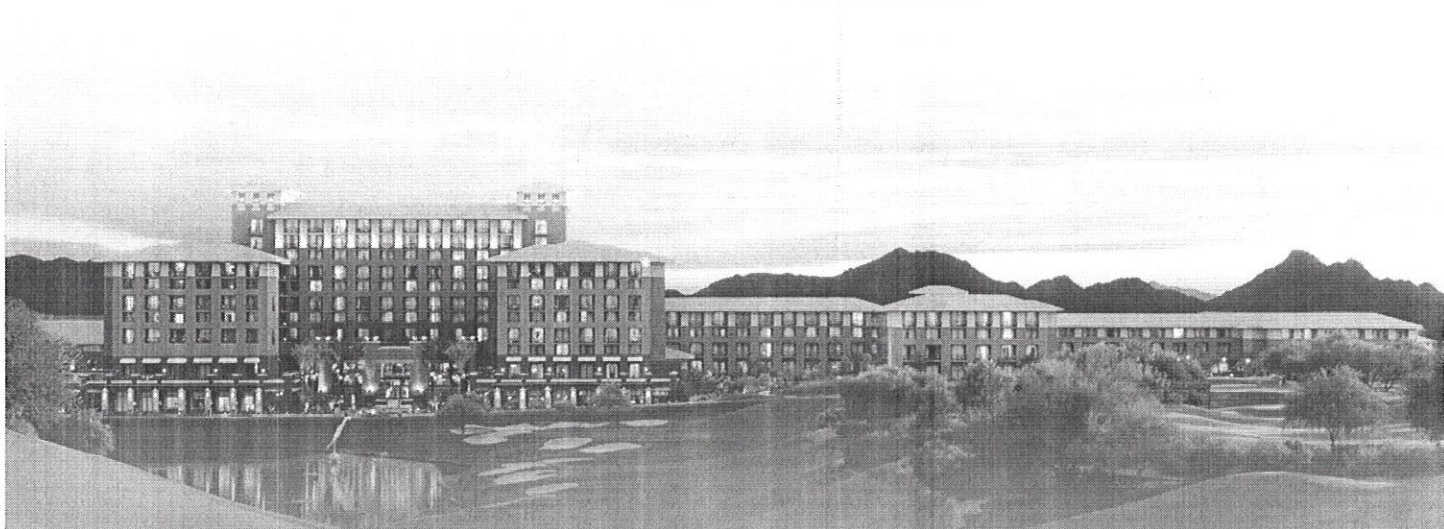
BOARD ACTION: APPROVED: \_\_\_\_\_ DISAPPROVED: \_\_\_\_\_ DATE: \_\_\_\_\_



**NOV 4-5**

*Scottsdale*

**AZ**



**2021 EDUPOINT USERS CONFERENCE**  
Scottsdale, AZ | Westin Kierland Resort & Spa



# Join us at Synergy CONNECT 2021

Please join Edupoint for Synergy CONNECT 2021 at the Westin Kierland Resort & Spa in Scottsdale, Arizona. This annual event is your opportunity to connect with the products, trends, and people at the forefront of K-12 student data and learning management.

- **Numerous breakout sessions**, with sessions for all levels of Synergy experience
- **Several NEW conference sessions**, including additional sessions on curriculum & standards
- **Hands-on sessions** in an intimate computer-lab setting for in-depth Synergy training
- **Customer-led sessions** for the end-user perspective on Synergy
- **The return of Open Forum** for scheduled one-on-one instruction and Q&A with Edupoint solution experts
- **Previews of new products** and services
- **Partner Expo** with live demonstrations of integrated solutions and the opportunity to speak one-on-one with trusted technology industry leaders
- **Optional pre-conference Boot Camp sessions:** Hands-on half-day sessions on November 3rd
- **Partner For Life and Synergy Achievement Awards** recognition



## SYNERGY CONNECT 2021 HIGHLIGHTS

**Informative Breakout Sessions** – Our multi-track schedule of breakout sessions provides more than 100 options for deepening or refreshing your knowledge and discovering new things. Follow a single track related to your area of focus or explore sessions from many different tracks and gain firsthand knowledge about Synergy Education Platform features and functionality relevant to your role and your experience level. There's truly something for everyone!

**Open Forum for One-On-One Guidance** – Conference attendees love our Open

Forum! It's your chance to speak with Edupoint subject matter experts and get answers to your questions about Synergy functionality pertinent to your district. Open Forum is available at various times throughout the day, including breakfast and lunch breaks, so grab a plate and bring it with you!

**Go Hands-On in Our Computer Lab** – There's no better way to learn than by doing it yourself. Our Hands-On Tracks offer sessions in a lab setting with Synergy test environments provided by Edupoint, so you can follow along step-by-step.

**Networking Opportunities** – Every year, attendees tell us how valuable it is to "hear how other districts are doing things," which is why we build time into the schedule for you to network with your peers. Meet fellow Synergy users from across your state or across the country, and discover how they are using Synergy to streamline processes, improve data usage, and positively impact student success.

**Partner Expo** – Interact with trusted technology partners for demonstrations of solutions that seamlessly integrate with Synergy Education Platform.

# Why should you attend?

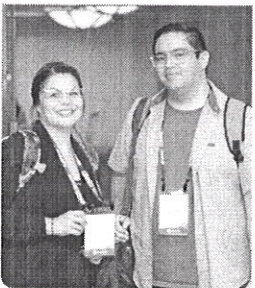


## Build Your Synergy Skills

Learn how to use Synergy features directly related to your role. Find out about the latest Synergy features, be the first to know about upcoming functionality, and get more from your existing Synergy solution.

## Network And Explore New Ideas With Colleagues

Discover how others in your area utilize Synergy and learn from their experiences to boost your own skill set.



## Get Expert Help

Take advantage of our Open Forum for scheduled one-on-one instruction and Q&A with Edupoint subject matter experts. Bring your questions!

## Connect With Edupoint Executives

Mingle & network with Edupoint thought leaders throughout the conference. Ask questions, discuss future trends, or just say "hi."

# Who attended last year?

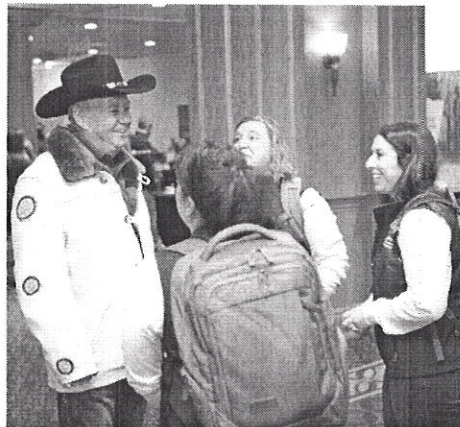
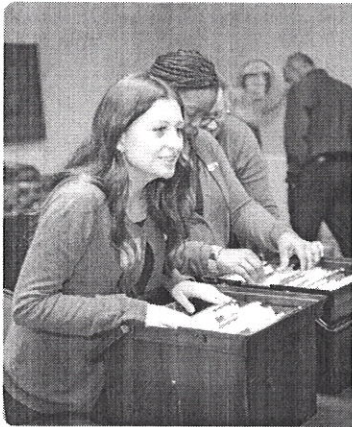
Attendees from all areas of K-12 come to Synergy CONNECT

- SQL Database Analyst
- Technology Specialist
- Registrar
- Applications Support Analyst
- Special Education Administrator
- Coordinator of State & Federal Programs
- Director of Assessment
- SIS Coordinator
- Assistant Principal
- Database Administrator
- Secretary
- Director of Special Education
- Data Integrity Specialist
- System Support Specialist
- Technology Director

- SIS Supervisor
- Support Technician
- Programmer
- Office Manager
- Director of Instructional Technology
- Chief Technology Officer
- Information Technology Manager
- Counselor
- Principal
- Information Systems Specialist
- Senior Systems Administrator
- Teacher
- Digital Curriculum Specialist
- Instructional Support Coach
- Educational Technologist



# Registration Information



The registration fee for Synergy CONNECT 2021 is \$550 per attendee with an Early Bird rate of just \$495 if registered by August 30th. This covers attendance at the general session and all breakout sessions, breakfast/lunch/snacks each day, and the Thursday evening networking reception.

### **Cancellation Policy**

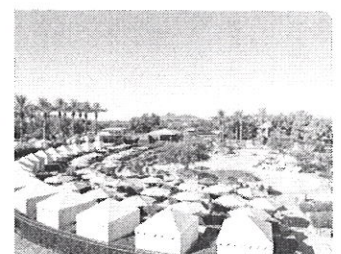
*Please note that Synergy CONNECT 2021 registrations are final and we are unable to provide refunds.*

# Hotel & Travel

Synergy CONNECT 2021 will take place at the *Westin Kierland Resort & Spa* in beautiful Scottsdale, Arizona. For hotel room reservations at special conference rates, please visit [Edupoint.com/2021UC/Travel](http://Edupoint.com/2021UC/Travel)

### **Questions?**

Contact us at  
[Edupoint-UserConference@Edupoint.com](mailto:Edupoint-UserConference@Edupoint.com)



# Conference Agenda

## Wednesday, November 3

\*Optional Pre-Conference Boot Camp Sessions (Additional \$249 each)

7:30 am - 8:00 am.....	Continental Breakfast
8:00 am - 11:30 am.....	Hands-On Training Sessions
11:30 am - 12:30 pm.....	Lunch Break
12:30 pm - 4:00 pm.....	Hands-On Training Sessions

## Thursday, November 4

General Conference, Day 1

7:30 am - 9:30 am.....	Conference Registration & Continental Breakfast
8:00 am - 9:30 am.....	Customer Support Open Forum
9:30 am - 11:30 am.....	Opening General Session
11:30 am - 1:00 pm.....	Lunch
11:30 am - 5:00 pm.....	Customer Support Open Forum
1:00 pm - 2:10 pm.....	Breakout Session #1
2:20 pm - 3:30 pm.....	Breakout Session #2
3:30 pm - 4:00 pm.....	Refreshment Break
4:00 pm - 5:10 pm.....	Breakout Session #3
5:00 pm - 6:30 pm.....	Networking Reception

## Friday, November 5

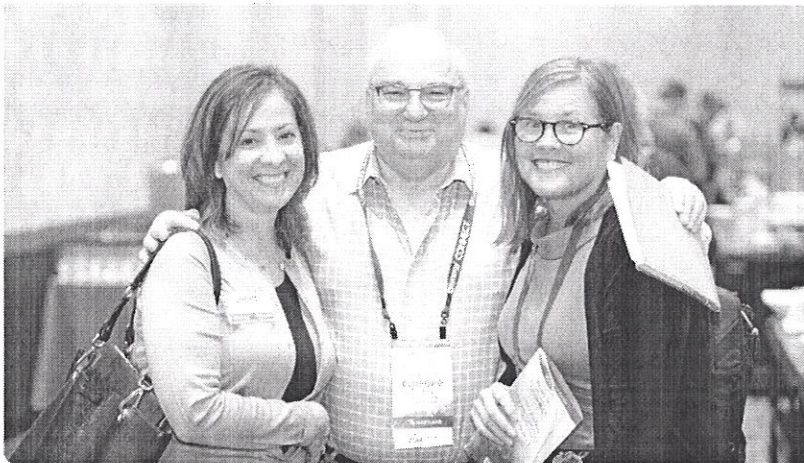
General Conference, Day 2

8:00 am - 9:00 am.....	Breakfast
8:00 am - 3:20 pm.....	Customer Support Open Forum
9:00 am - 10:10 am.....	Breakout Session #4
10:20 am - 11:30 am.....	Breakout Session #5
11:30 am - 1:00 pm.....	Lunch
1:00 pm - 2:10 pm.....	Breakout Session #6
2:20 pm - 3:30 pm.....	Breakout Session #7
3:30 pm - 4:00 pm.....	Closing General Session

# Open Forum

## CUSTOMER SUPPORT OPEN FORUM

Maximize your time with Synergy experts by scheduling one-on-one time with members of Edupoint's Customer Resource Center and Development teams in the Open Forum. Available throughout Synergy CONNECT 2021 for both walk-in and scheduled appointments, the Open Forum is your opportunity to speak with Edupoint subject matter experts for private solution demonstrations and have questions answered about Synergy functionality pertinent to your district.



# Pre-Conference Boot Camp Schedule

## PRE-CONFERENCE BOOT CAMP | WEDNESDAY, NOVEMBER 3

8:00 - 11:30AM	New Year Rollover & Summer School Setup	Grade Book Admin Reports	SIS Basics for New Users (Part 1)	Customizing OLR
12:30 - 4:00PM	Customizations Without the Use of ST	SIS Basics for New Users (Part 2)	Building Standards Based Report Cards	Master Schedule Builder Scenarios





# Breakout Session Schedule

## DAY 1 | THURSDAY, NOVEMBER 4

	ELECTIVE 1	ELECTIVE 2	STATE REPORTING	SIS BASICS	SIS ADVANCED	SCHEDULING	OLR
SESSION 1	Fees API & Direct Payment Model	Attendance Letters 2.0	Civil Rights Data Collection (CRDC)	Tips & Tricks for Beginners	Synergy Query for Power Users	New Year Rollover	Synergy OLR Overview
SESSION 2	Student Groups & Eligibility	Intro to GPAs	California State Reporting	Enrollment Basics: A Walkthrough	SIREN to the Rescue	Online Course Requests	What's New With OLR: New Functionality Highlights
SESSION 3	Video Conference Integration		Arizona State Reporting	Taking Attendance	Mail Merge Mysteries Unlocked	Mass Scheduling	Roundtable: Implementing OLR

	IA 1	IA 2	IA 3	IT	SPED
SESSION 1	Parent/Teacher Conferences in Synergy	Synergy Student: Explore the StudentVUE Web Portal & Mobile App	Synergy Grade Book: LMS Features for Course Delivery	Synergy Database Schema	New SE Features
SESSION 2	Integration: Microsoft Teams® & OneRoster®	Synergy Analytics: Using Analytics to Inform Key Stakeholders	Synergy Assessment: An Introduction	Self-Hosted to Edupoint-Hosted	Hands-On: SE Query for Beginners
SESSION 3	District Gradebook: How to Manage District Settings for Synergy Grade Book	PBIS & Discipline Within the Synergy RTI Module	Teacher, Parent, & Student Communication with Video Conferencing, Email, or Notifications	Who Knew Synergy Did That? Security Tips, Tricks & Techniques	Managing 504 Requirements in SE

# Breakout Session Schedule

## DAY 2 | FRIDAY, NOVEMBER 5

	ELECTIVE 1	ELECTIVE 2	STATE REPORTING	SIS BASICS	SIS ADVANCED	SCHEDULING	OLR
SESSION 4	Contact Tracing	Mail Merge Report Cards	Virginia State Reporting	Recording Grades & Report Card Options	Tips & Tricks for Power Users	Flex Scheduling & New Features	First Year of OLR
SESSION 5	Introduction to Synergy Surveys	Design Configuration & Property Override	Hands-On BYOD: Mobile Applications	Adding Health Records	Maximizing User-Defined Capabilities	Master Schedule Builder	Hands-On: Moving To & Maintaining Multiple Configurations
SESSION 6	Custom Immunizations	SIS Data Import		Submitting Discipline Incidents	Getting the Most Out of Data Integrity Rules	Schedule Maintenance & Walk-In Scheduling	KioskVUE with Family Reunification
SESSION 7	New Functionality Highlights	Test Import & History Attendance Configurations		Creating Basic Queries	Solving Problems with Advanced Features	Elementary Scheduling	Synergy Mail & Email Functionality

	IA 1	IA 2	IA 3	IT	SPED
SESSION 4	Instructional Applications Functional Review	Google Classroom®, Google Provisioning®, and Integration to Google for Education®	Customer Perspectives: MTSS	Infrastructure & How It All Works	Synergy SE: Implementation & Beyond
SESSION 5	Grade Book Future	Analytics: A Customer Perspective	Introduction to MTSS/RTI	User Provisioning LDAP & SSO (Google Sync)	SE VUE Mobile App & Medicaid
SESSION 6	Determining Proficiency: Implementing Standards-Based Grading in Synergy Gradebook	Universal Screening/Early Warning & the Synergy MTSS Module	District Course Curriculum: Creating, Organizing, and Pacing Content for Teachers and Students	Database Size Management	Hands-On: SE Query for Advanced Users
SESSION 7	TeacherVUE Overview		Hands On: Synergy Assessment LTI and Course Content: a Deep Dive into Learning Tools in Synergy		UD Showcase

# Pre-Conference Boot Camp | SESSIONS

**WEDNESDAY, NOVEMBER 3**

## **Master Schedule Builder Scenarios (Hands On)**

There are several common configurations needed by schools when using the builder to create the master schedule. Users will have the opportunity to set-up several scheduling scenarios in Master Schedule Builder to become more familiar with setup and how to view results. This is a hands-on session. **Level: Advanced**

## **New Year Rollover & Summer School Setup**

In this dual session, we will begin with a quick session introduction and then move into a consultation to understand the needs of our district, make our plan, and begin the New Year Rollover process! We are tasked with completely rolling the "SC Mock School District" while achieving different needs for each school! There will be tips and tricks for achieving certain common scenarios, handling potential situations (such as potential school closures, changes in configurations, etc.), and maybe even some common error messages to troubleshoot and get past! ... But the fun doesn't stop there... Once we have successfully created the 2022-2023 School Year for SC Mock SD, we will then need to create and enroll our students into Summer School. Each participant will be armed with their own SC Mock School District, some background information on the needs of our district for the upcoming school year, and a document to follow along in the steps we need to follow to get to the finish line! (Also, a handout you can take back to your individual school districts to use to assist in your own upcoming NYR process.) **Level: Intermediate**

## **SIS Basics for New Users (Part 1)**

This full-day session is for users new to Synergy and those needing a refresher of basic functionality. Some examples of the knowledge you will leave this session with are: navigating in Synergy, enrolling a student, adding daily and period attendance, entering a discipline incident, adding student health information, updating student grades, running a basic query and maintaining student schedules. This is a hands-on session. **Level: Beginner**

## **Customizing OLR**

Learn how to customize Synergy Online Registration in this hands-on training session. We will use multiple configurations to gather grade level, enrollment type, or time of year specific information including using View Change, Security, Conditions, Label Override, and Auto-Accept Options to customize each configuration. At the end of the session attendees will be able to break an existing configuration into unique setups and tailor each setup to be distinctive. This session is designed for staff involved with managing Online Registration Setup. **Level: Intermediate**

## **Building Standards-Based Report Cards**

Come learn how to create or modify elementary report cards for use within Synergy Gradebook! In this session, attendees will receive hands-on training working with .rldc files within Microsoft Visual Studio. Edupoint's report card developers will share valuable tips and time-saving tricks that they've learned while creating thousands of report cards for our school districts. This session will also demonstrate the new features available within our new Report Card screen. **Level: Advanced-technical**

## **SIS Basics for New Users (Part 2)**

This full-day session is for users new to Synergy and those needing a refresher of basic functionality. Some examples of the knowledge you will leave this session with are: navigating in Synergy, enrolling a student, adding daily and period attendance, entering a discipline incident, adding student health information, updating student grades, running a basic query, and maintaining student schedules. This is a hands-on session. **Level: Beginner**

## **Gradebook Admin Reports**

Admin Reports is a simple yet powerful tool that allows you to deliver real-time data focused to the specific needs of your end-users. This session will discuss how to create advanced reports that pull data from practically anywhere in the database, as well as how to target these reports to any user in Synergy. Working with actual Admin Report examples, we'll explore each step of creating a 1 Admin Report, focusing on developing the SQL queries for these reports and modifying them to use focus-based and other custom parameters. Bring your own report requirements to the session and we'll explore how to develop them into Admin Reports! **Level: Advanced-technical**

## **Customizations Without the Use of ST**

This hands-on session will guide attendees through the process of customizing screens within Synergy. Topics will include the customization of existing screens in Synergy SIS and TeacherVUE, as well as the creation of new screens in Synergy SIS, TeacherVUE, and ParentVUE. Attendees will use Property Override, User-Defined Data and the new Design Configuration tool, and will leave this session empowered to apply what they have learned to their own Synergy solution. A basic understanding of the Synergy data structure and the navigational elements in the user interface is highly recommended. **Level: Intermediate**

# Elective 1 | TRACK

THURSDAY, NOVEMBER 4

## Fees API & Direct Payment Model

In this session we will be discussing the Fees - Direct Payment module. Attendees will leave the session with an understanding of how to record and track student fees. We will go over some of the setup required for third-party fee providers and additional configuration for prorating or waiving fees. This session is for school administrators, accounting, and financial department staff.

**Level: All**

## Video Conference Integration

In this session we will be discussing the integration between Zoom and our new Video Conferencing feature. This feature allows districts to set up virtual meetings with students on a recurring basis or according to their class schedule. Attendees will leave this session understanding how to use this feature to facilitate virtual meetings through Synergy, TeacherVUE, and StudentVUE. **Level: All**

## Student Groups & Eligibility

Looking to set up and create student groups? How about setting up group eligibility? This session for school and SIS administrators will cover what you need to know about how groups and eligibility work. **Level: Beginner**

FRIDAY, NOVEMBER 5

## Contact Tracing

Join us for a look at the new Contact Tracing module! In this session, we will visit the Contact Tracing and Attendance Definition views. Attendees will learn about how Contact Tracing works, and we will show several examples of tracing, filtering, and exporting the results. **Level: Beginner**

## Introduction to Synergy Surveys

As a district's need for surveying parents, students, teachers, and User Groups varies, the Survey feature within Synergy remains consistent through the effective and accommodative filtering options it provides. Learn how to configure, launch, and troubleshoot Synergy Surveys to provide a user-friendly experience to your survey recipients through email. **Level: Beginner**

## Custom Immunizations

Learn how to create and implement custom immunization rules in your district. These rules can help satisfy strict state requirements with much greater precision. This session is appropriate for administrators who enter immunization rules into Synergy and the health staff who verify the rules and definitions. For maximum benefit, attendees should be familiar with Synergy generally and with Immunizations within Synergy. **Level: Beginner**

## New Functionality Highlights

Didn't get enough of the new Synergy features and functionality at Opening Session? Come have a second look! Attendees will leave with a better understanding of what's coming. **Level: All**

# Elective 2 | TRACK

THURSDAY, NOVEMBER 4

FRIDAY, NOVEMBER 5

## Attendance Letters 2.0

In this session, we will do a deep dive into the Attendance Letter V2. This will include an overview of the Attendance Definition, Attendance Letter V2, and Mail Merge Definition views, as well as the ATD810 Attendance Letter V2 report. We will cover the basics such as navigation of the view and how to run an existing letter. Then we will do a complete setup live, with examples for both Period Attendance and Daily Attendance schools separately. A list of steps and pitfalls will be provided. In addition, we will give a printout of a sample Mail Merge document, displaying the majority of the available merge fields for the Attendance Letter V2. **Level: Intermediate**

## Intro to GPAs

Do GPAs weigh you down? Do you find the endless combinations a bit mysterious? If so, allow us to be your guide through the strange and foreign land of GPA configurations! We'll take you through the setup, configuration, and a few reports you can pull to better help navigate GPA land. By the end, you will be able to navigate those calculations with one or two maps. **Level: Beginner**

## Attendance Configurations

When building any new structure, the foundation is key. In this session we will navigate throughout SIS to build your attendance up with success. We will cover setting up how attendance is calculated, recorded, and the type of attendance you would want your schools to use. Join us as we navigate in creating new attendance codes, setting up real time attendance, using Mass Change Attendance and simply just creating a strong foundation for your attendance. **Level: Intermediate**

## Mail Merge Report Cards

In this session users will learn how to create a custom Mail Merge 2.0 Report Card from start to finish. We will walk through how to read the XML and apply various merge fields and formatting to create a masterpiece of a report card! Attendees will be given a sample report card template as well as tips and tricks that are not only helpful with the report card mail merge but other documents as well. **Level: Intermediate**

## Design Configuration and Property Override

Come learn the basics of customizing Synergy screens! In this session we will learn how to optimize the use of Design Configuration and Admin Configuration/Property Override to quickly and easily customize screens and properties. **Level: Intermediate**

## SIS Data Import

SIS Data Import can import a single Generic Conversion-formatted .xls file in Synergy SIS without having to run the Generic Conversion application, or modify a large number of records instead of using a SQL script. Learn how to locate template files within the FTP site, enter the correct information on the file by referencing the Data Conversion Guide, and use SIS Data Import within the Synergy UI to easily import the information. Recommended for District level Users. **Level: Intermediate**

## Test Import & History

Test History allows users to enter tests into Synergy for the purpose of tracking progress on Standardized Tests or for Graduation Requirements. Learn how to set up Test Definition and Test Import Definition, Performance Levels and Score Types, and how to navigate and enter data into the Student Test screen. Attendees will leave the session knowing how to create a Test Definition and set up and use Test Import. Recommended for users who are responsible for entering and utilizing testing data for students. **Level: All**

# State Reporting | TRACK

THURSDAY, NOVEMBER 4

## Civil Rights Data Collection (CRDC)

This session will focus on the latest CRDC functionality from this past reporting year and the changes coming to make the next reporting year a success. A brief overview of CRDC setup will be provided. Recommended for anyone who sets up and processes CRDC for federal reporting. Some familiarity with CRDC reporting is recommended. **Level: Intermediate**

## California State Reporting

This session will cover CALPADS State Reporting functionality with a focus on extracts and best practices. Specific topics include new extracts, widgets, and rules that can be installed or configured for CALPADS data integrity, reports, and upcoming changes to state reporting for California. We will provide an overview of new functionality as well as the development roadmap for California State Reporting. Attendees will leave this session with the ability to implement widgets and rules for State Reporting. Recommended for CALPADS State Reporting coordinators. Completion of all state-required CALPADS trainings available at <http://csis.fcmat.org> is required to fully benefit from this session. **Level: Intermediate**

## Arizona State Reporting

Get up to date on recent AzEDS reporting changes in Synergy. We will review functionality, provide troubleshooting tips, and allow time for Q&A. Attendees will take away an understanding of data collection and submission practices, including how to process individual data, submit groups of data, or mass process schools and entities to complete state reporting. Recommended for district users who are responsible for entering/reporting Membership, Attendance, Student Needs, and Programs through AzEDS. **Level: Intermediate**

FRIDAY, NOVEMBER 5

## Virginia State Reporting

Virginia reporting folks, this session is for you! We have no set agenda – we are here for a dialogue about any State Reporting items you would like to discuss. Any open development will be discussed. **Level: All**

## Hands-On BYOD: Synergy Mobile Applications

Synergy on the go! Put that mobile device to good use and learn the basics of what our mobile apps have to offer, because you do not have a desk job! In this bring-your-own-device seminar, users will receive a basic overview of the TeacherVUE, AdminVUE, KioskVUE, CounselVUE, HealthVUE, StudentVUE and ParentVUE apps. Learn how to make the most out of these tools, how Synergy Mail may change the way you interact with them, and how mobile devices are changing the way we interact with our school communities. There will be a digital scavenger hunt with giveaways at the end of the session, so pay close attention! **Level: Beginner**

# SIS Basics | TRACK

THURSDAY, NOVEMBER 4

## Tips & Tricks for Everyone

Are you looking for ways to increase your productivity when working with Synergy? This session will cover several techniques for improving your overall Synergy experience, such as shortcuts and advanced processes. Whether you are a new Synergy user or a system administrator, this session may benefit you. Users who attend this session should know how to navigate Synergy and be familiar with basic Synergy functionality. **Level: All**

## Enrollment Basics: A Walkthrough

The second session in the SIS Basics track covers learning how to add, inactive, no show, transfer, concurrently enroll, and edit student data in Synergy SIS. You will also learn about the different reports available that relate to the Student Screens. **Level: Beginner**

## Taking Attendance

The third session in the SIS Basics track covers the different ways to take attendance. Within SIS, there are various ways to take attendance and this session will cover those different ways, as well which method is ideal for different attendance taking scenarios. **Level: Beginner**

FRIDAY, NOVEMBER 5

## Recording Grades & Report Card Options

Printing report cards a bit stressful? Allow us to make report card life a bit easier. Join us as we walk through the Grading Setup, Report Card Options, and a few GRD templates with our favorite tips and tricks for that busy time of year. Dare we say by the end, printing the report cards will be akin to a trip to the spa? **Level: Beginner**

## Adding Health Records

Accurate Health data and record keeping is so important! Come join us as we explore the various Health screens available in Synergy. We will be reviewing the kinds of data nurses will be entering, medication tracking and administration, immunizations, health screenings, health conditions, and entry of visits to the nurse's office. We will also cover the basics of creating sliding scale immunizations. At the end of the session, attendees will understand the various options available for health data entry, how to set up immunizations, and how perform most data entry and record keeping tasks. Recommended for nurses and SIS health admins. **Level: Beginner**

## Submitting Discipline Incidents

Join us as we follow the life of a discipline referral from beginning to end. This session will cover how to create an incident in both SIS and TeacherVUE as well as some basic setup to the Discipline Incident module. For the first time at Synergy CONNECT, we will be demonstrating creating a Template for Incidents as well as an exploration of the Incident Approval Queue. This session is for teachers, administrators, and counselors. **Level: Beginner**

## Creating Basic Queries

Looking for specific info and can't find a report for it? Let's build a query! This session will cover creating a query from matrix data, customizing that query, and sharing with others. We can even make our own report! **Level: Beginner**

# SIS Advanced | TRACK

THURSDAY, NOVEMBER 4

## Synergy Query for Power Users

Synergy Query is the gateway to power. In this session we will take a fresh look at the Query tool in Synergy through the eyes of a data specialist. Attendees will be offered a full understanding of how data is stored in Synergy, the role of the business object, and how to extract data effectively. Whether it is a quick ad-hoc Find Query or something more complex intended for use with a SIREN or Mail Merge report, this session will prepare you for success.

**Level: Intermediate to Advanced**

## SIREN to the Rescue

Need an ad-hoc report with the appearance of a standard Synergy report? Then you need SIREN! This session will provide a quick overview of the Report Designer, then demonstrate the full power of SIREN. We'll cover a broad range of topics such as using SQL as the datasource, C# for dynamic formatting, and using a SIREN report as a process. Attendees will walk away with an understanding of the power and versatility of SIREN. This session is best suited for Synergy users skilled with Synergy Query and/or SQL.

**Level: Intermediate to Advanced**

## Mail Merge Mysteries Unlocked

What comes to mind when you think of Mail Merge? Whether it is a simple form letter, or a complex Secondary Report Card this session will show you the latest techniques to make full use of the Mail Merge features. We'll remove the distinction between Mail Merge 2.0 and Visual Mail Merge as we show you how to they go hand-in-hand to make easy things easy, and hard things possible.

**Level: Intermediate to Advanced**

FRIDAY, NOVEMBER 5

## Tips & Tricks for Power Users

This session is a fast-paced exposé of advanced topics and tidbits. If you are a data specialist, Synergy administrator, server administrator, or otherwise a Synergy power user, we will demonstrate useful techniques to make day-to-day activities easier and methods to maximize the power of Synergy features.

**Level: Intermediate to Advanced**

## Maximizing User-Defined Capabilities

In this session we will push Synergy's UD features to their very limits by providing a complete understanding of composition of a UD Business Object. We'll take it right to the limits of the features so you can see where User-Defined functionality ends and custom Synergy Technology functionality begins. **Level: Advanced**

## Getting the Most Out of Data Integrity Rules

Let's take a fresh look at our old friend Synergy Rules Setup. This session is going to show updated examples of useful rules to ensure data integrity and create notifications and tasks so that the limits of the feature are clearly defined. Then, we will push beyond those limits to get the very most possible by building upon some advanced UD functionality concepts. **Level: Intermediate to Advanced**

## Solving Problems with Synergy's Advanced Features

This all-new session is a capstone presentation of Synergy CONNECT'S SIS Advanced track. We will build upon examples shown in the previous sessions to demonstrate how all of these concepts, techniques, and features can be used together to comprehensively address a need for functionality that does not already exist in Synergy. Attendees will leave with an advanced perspective of how the various features in Synergy can be exploited to solve real world problems. **Level: Advanced**



# Scheduling | TRACK

THURSDAY, NOVEMBER 4

FRIDAY, NOVEMBER 5

## **New Year Rollover Overview**

This presentation will break down the complete New Year Rollover process to its basic components and give SIS Admin Users the fundamentals that they will need to confidently set up the different NYR process sets. We will also go over some of the more common elements as well as tips and best practices to use while setting up your process sets for success. You will also receive a handout you can take back to your individual school districts to use to assist in your own upcoming NYR process.) **Level: Beginner**

## **Online Course Requests**

In this session, we will demonstrate setting up Online Course Requests for different school types and district needs. We will also include utilizing Teacher Recommendations (through TeacherVUE) and show you what the parents and/or students see from the ParentVUE and StudentVUE portals as well. We will reference troubleshooting techniques, screens for validating these Course Requests, and some popular Reports to assist you in the process. (You will also receive a handout you can take back to your individual school districts to use to assist in your own upcoming Online Course Request session.) **Level: Beginner**

## **Mass Scheduling**

This presentation will cover Mass Scheduling basics including, but not limited to, setup, rules, section maintenance, and conflict resolution. Learn how to utilize the Scheduler to schedule your whole student body! Attendees will benefit from having a general understanding of Scheduling concepts and pre-scheduling processes (e.g., Course Request setup and concepts). **Level: Intermediate**

## **Flex Scheduling & New Features**

Flex Scheduling functionality allows students more freedom in their Flex Day schedule while keeping them accountable for attendance. This session will be an overview of the use, setup, and process of using Flex Scheduling, including the view for students and teachers. **Level: Advanced**

## **Master Schedule Builder**

Master Schedule Builder (MSB) is a powerful scheduling tool that automatically builds the most efficient schedule possible, taking a variety of factors into account. In this session you will learn about MSB functionality, required setup, and rules, and how MSB can benefit your school. For maximum benefit, attendees should understand general scheduling concepts and other routes to scheduling (e.g., Course Request setup and Mass Scheduling). **Level: Advanced**

## **Schedule Maintenance & Walk-In Scheduling**

Need to schedule a student but the Mass Scheduling process is already complete? No Problem! Just come on over to the Walk-In Schedule Screen. This session will cover entering a single student's course requests, using the Schedule button to schedule students into classes, and adjusting a student's existing schedule. **Level: Intermediate**

## **Elementary Scheduling**

This session will demonstrate various options for elementary schools to schedule students. Attendees will learn best practices for creating the elementary schedule and assigning students to sections. Subject includes: Linked Section, Class Assignment, Section, Assign Students To Sections, and Setup to meet school requirements. This session is for registrars who understand the components of a schedule and can navigate Synergy. **Level: Beginner**

# OLR | TRACK

THURSDAY, NOVEMBER 4

FRIDAY, NOVEMBER 5

### Synergy OLR Overview

See a high-level overview of Online Registration and its latest features. Online Registration continues to expand with new offerings to make the district's, schools', registrar's and data clerk's life easier! This session is designed for district decision makers and staff responsible for creating and maintaining enrollment packets. **Level: Beginner**

### What's New with OLR: New Functionality Highlights

Did you know that Online Registration continues to evolve and grow? This session will cover the latest functionality developed to enhance Online Registration. This session will take a closer look at new features available with Online Registration in the upcoming Synergy release. **Level: Beginner**

### Roundtable: Implementing OLR

The Online Registration Roundtable Discussion provides a forum for school districts to share their knowledge gained, success, and challenges from implementing Synergy Online Registration districtwide. Session panel will provide feedback based on their own experience, such as what to expect when implementing, and how to best roll out the module. Attendees will leave this session with an awareness of the Online Registration implementation process, including internal preparation, commitment, and training. This session is appropriate for all district employees who may be responsible for Online Registration application setup. Highly recommended for users new to Online Registration or those considering licensing the module. **Level: Beginner**

### The First Year of OLR

Where do you start when Online Registration hasn't been updated in a year? This session will review how to prepare Online Registration for the new year, including tips on what to do with New Year Rollover, what can and cannot be updated without disruption to active registration windows, and how to test and prepare for a new registration window. At the end of this session attendees should leave with an understanding of how to move Online Registration into the new year and prepare for go live.

**Level: Beginner**

### Hands-On: Moving To & Maintaining Multiple Configurations

During this hands-on session, attendees will take a single Online Registration configuration and break it out into two unique configurations. During that process we will review impact and setup related to grade level, enrollment type, conditions, views, and configuration-specific security and labels. By the end of the session, attendees should have an understanding of how to copy a configuration to be a new, unique setup. **Level: Intermediate**

### KioskVUE with Family Reunification

This session will cover the KioskVUE mobile app and all of its features at the overview level. This will specifically include a deep dive into the Emergency Response System and Family Reunification feature within KioskVUE. **Level: Beginner**

### Synergy Mail & Email Functionality

Whether it is Synergy Mail, a Mass Email, a report/notification, or direct contact to parents and students, observe the underlying configuration requirements that connect them all. From basic email setup to troubleshooting Result Files in the Job Q Adm Viewer, we will highlight key factors to take note of along with a synopsis of Synergy Mail and its capabilities. **Level: Intermediate/All**

# IA 1 | TRACK

THURSDAY, NOVEMBER 4

FRIDAY, NOVEMBER 5

### Parent/Teacher Conferences in Synergy

Parent/Teacher Conferences in Synergy has been re-imagined! Join us to see the new features that support and facilitate ad-hoc or periodically scheduled conferences. **Level: All**

### Integration: Microsoft® Teams & OneRoster®

If your teachers use Microsoft Teams or a OneRoster certified solution like Schoology, Canvas, or Brightspace, come learn all about our Grade Book integrations! This session will explore configuration as well as how the automatic flow of information increases efficiency and productivity not only for the district but also for your teachers and students. **Level: Intermediate**

### District Grade Book: How to Manage District Settings for Synergy Grade Book

This session will demonstrate how District Grade Book can be used to create templates by course/grade level that can include: assignments, category weighting, final grade configuration, term weighting, assignment type security, and other settings. Topics will also include managing multiple District Grade Books, as well as working with District Grade Books in multiple schools and years. **Level: Intermediate**

### Instructional Applications Functional Review

Join us as we walk through a day in the life of a teacher! This session will explore TeacherVUE, Grade Book, and finalizing report cards for both elementary and secondary teachers. Because these are the areas teachers use the most, we'll also offer plenty of tips and tricks throughout to help increase efficiency and comfortability for your teachers. **Level: All**

### TeacherVUE Overview

There is so much more to TeacherVUE than just taking attendance! This session will explore the many features available to your teachers including: communication, parent/teacher conferences, incident referrals, reports, lunch counts, demographic/attendance/health/course history information, test group analysis/test history information, substitute instructions, grade posting and more! **Level: All**

### Grade Book Future

Join the Instructional Applications leadership team for a review of the latest Grade Book features. See soon-to-be-released new features and hear about some priorities in the long term product roadmap. This is your chance to add your voice to Grade Book's next features and priorities. **Level: All**

### Determining Proficiency: Implementing Standards Based Grading in Synergy Grade Book

Are you considering standards-based grading in your district, or are you curious about other configurations Synergy may offer? This session walks through district setup and considerations, as well as the scoring and analysis of standards within Synergy Grade Book. Learn how different calculation methods and customizable settings can make a transition to standards-based grading a success in your district. **Level: All**

# IA 2 | TRACK

THURSDAY, NOVEMBER 4

## Synergy Student: Explore the StudentVUE Web Portal & Mobile App

Today, students are busier than ever, but the StudentVUE web portal and mobile app provide students immediate access to important information right at their fingertips. Dive into these time-saving products to set up notifications, view assignments, check current grades and attendance, review test history, and more! **Level: All**

## Synergy Analytics: Using Analytics to Inform Key Stakeholders

Come explore the power of Synergy Analytics to inform key stakeholders of critical information through the use of compelling dashboards, interactive tables, meaningful charts, and practical drill-downs. Attendees will see several role and data domain based examples of Analytics dashboards that make use of real-time data derived from SQL or ST Query. Create “actionable” data that delivers to users from the superintendent, department heads, principals, teachers, and even parents and students. **Level: All**

## PBIS & Discipline with the Synergy MTSS Module

Take a deep dive into the Synergy MTSS module as we specifically focus on the PBIS tool and discipline management. The session will focus on all the features and options of behavior points, rewards stores, check-in/check-out, minor incidents, major incidents, teacher observations, requests for support, and much more. We’ll explore the PBIS dashboard and review how students are identified and become candidates for behavior interventions. Finally, we will show school site and district tools to review discipline activity based on your custom summaries and aggregations. **Level: All**

FRIDAY, NOVEMBER 5

## Google Classroom®, Google Provisioning®, and Integration to Google for Education®

Explore the Google® integration throughout Synergy and Grade Book! This session will include configuration information and demonstrate how the integrations result in the seamless exchange of student and staff information, assignments, scores, submissions, and more! **Level: All**

## Analytics: A Customer Perspective

This customer-led session will provide an overview as to how the implementation and growth of the Analytics module was managed. Gain tips and tricks for data analysis and see the incredible dashboards designed by districts for all levels of users. **Level: Intermediate**

## Universal Screening/Early Warning & the Synergy MTSS Module

Join us to review the powerful Synergy MTSS Early Warning System. Set up multiple measure-matrices to identify students struggling with discipline, attendance, graduation, or any academic area. We’ll build matrices to examine reading, math, and discipline, and show how the universal screening capability easily identifies struggling students. Topics will include how roles, including teachers, principals, and district administrators, can analyze student performance in any area of the Synergy ecosystem. **Level: Any**

# IA3 | TRACK

THURSDAY, NOVEMBER 4

FRIDAY, NOVEMBER 5

## Synergy Grade Book - LMS Features for Course Delivery

In Synergy Grade Book, teachers can design and develop engaging Course Content and Assignment Banks through the use of LTI partners, YouTube®, Google Drive®, OneDrive® and more. We will demonstrate the power and simplicity of creating blended and online courses, as well as the ease of sharing and accessing teacher-created lessons. **Level: All**

## Synergy Assessment: An Introduction

Gain insight into Synergy Assessment from the admin, teacher, and student perspective. Synergy Assessment is a full suite formative or summative assessment system. Experience start-to-finish: question and test creation, scheduling, student testing, and analyzing data. Come along as we demonstrate some of the newest features to the ever-growing Assessment module. **Level: All**

## Teacher, Parent & Student Communications with Video Conferencing, Email, or Notifications

Communicating with parents and students is essential for any teacher. In this session, we will discover the various tools teachers have available, including email, progress reports, and video conferencing with the built-in Zoom® functionality. We will also explore some different notification options parents and students have available to stay up to date on the latest information. **Level: All**

## Introduction to MTSS/RTI

Join us for a tour into the exciting MTSS/RTI module. During this session we will preview all of the MTSS/RTI components, which streamline identifying student needs, allow efficient team member collaboration, and compile data for robust analysis. Come and preview MTSS plans, CICO enrollments, observations, requests for support, behavior points, rewards store, major/minor incidents, and the Early Warning System to see how we can facilitate your student support systems in place. **Level: Beginner**

## Hands-On: Synergy Assessment

Dive in to the Synergy Assessment module and get a sneak peek into upcoming features not yet released. Create your own questions that are content-rich, standards-aligned and tech-enhanced. Customize a brand new test that can be scheduled and taken as student analyze the results, and generate a multitude of reports. **Level: All**

## LTI & Course Content: a Deep Dive into Learning Tools in Synergy

Follow along as we explore building strong, meaningful rich content for students. This session will demonstrate the integration of third-party content, LMS pages, Google® handouts, and more to create content that is easy to access and digest by students. **Level: All**

## Customer Perspectives: MTSS

This customer perspectives session will be led by districts currently using Synergy MTSS to manage academic and behavior intervention. Come hear about PBIS strategies and behavior management directly from implemented districts. This session will explore Synergy MTSS for both academic and behavior intervention. **Level: All**

## District Course Curriculum: Creating, Organizing, & Pacing Content for Teachers & Students

Learn how Synergy LMS can support classroom instruction and teacher collaboration. This demonstration will cover the creation and organization of district course curriculum and how districts can sequence the content for teachers to seamlessly inherit. **Level: All**

# IT | TRACK

THURSDAY, NOVEMBER 4

## Who Knew Synergy Did That?

New features are added to Synergy seemingly every day. With all of that innovation, it's easy to lose track of features and functionality in Synergy SIS. This session will be a journey of discovery into the lost and overlooked features of Synergy that may be hiding in plain sight. Attendees are encouraged to bring their own Forgotten Feature ideas to the session. Giveaways will be handed out to the top 3! **Level: Beginner**

## Synergy Database Schema

This session will review the Schema of the Synergy Database and review key Tables. We will show how to join tables from different Business Objects. We will review the Views provided with the database and how to use those in queries. **Level: Intermediate**

## Self-Hosted to Edupoint-Hosted

This session will discuss the process and considerations for customers who are moving from Self Hosting to Edupoint Hosting. We will discuss the lessons learned from the previous customers who have made this transition. We will also review a Project Plan that covers all of the steps for this process and identifies who owns each task. **Level: Beginner**

## Security Tips, Tricks, & Techniques

This session will discuss the logic Synergy uses to apply view, report, and field level Security to users. We will also discuss Security management, adding users, and Security best practices. This session is best suited for the Synergy user who has a firm understanding of navigating the PAD Tree, running reports, and basic Synergy user management (e.g., creating users and user groups). **Level: Intermediate**

FRIDAY, NOVEMBER 5

## Infrastructure & How It All Works

Learn about Synergy's many foundational parts, why they are important, and how they can best be used. In this session we will discuss the components that make up Synergy infrastructure – web server, database, process servers, load balancers, LDAP stores, Generic Conversion – and how they interact with each other. Attendees will leave with a better understanding of system capabilities, requirements for infrastructure improvements, and how to diagnose issues. Appropriate for networking and IT roles and for anyone wanting a clearer picture of how Synergy works. **Level: All**

## User Provisioning LDAP & SSO (Google® Sync)

Synergy can leverage the Active Directory (AD) Domain User provisioning process by our customers. This session will provide a detailed description of the requirements for the automation of user account creation in Synergy from existing user records in an Active Directory (AD) Domain. We will discuss user authentication as well as the LDAP Synchronization to create Synergy Staff records as well as Staff School Year Records. The LDAP Synchronization process will also create Synergy User Records as well as update key fields such as Login Name, First Name, Last Name, Email, and other fields if they change in AD. Synergy Users are also added to Synergy User Groups based on membership in AD Security Groups. The LDAP Synchronization process can eliminate the need to create Synergy Staff, User, and User Group membership by hand in Synergy. **Level: Intermediate**

## Database Size Management

We will review the tables that can be trimmed to help limit the size of the Synergy database. We will also review the SQL best practices to keep the size of the database log file from growing. We will also discuss methods to keep the size of non-production databases (Test, Training, etc.) from requiring the same amount of space as the Production Database. **Level: Intermediate**

# SPED | TRACK

THURSDAY, NOVEMBER 4

FRIDAY, NOVEMBER 5

## New Features in SE

Did you know that SE continues to evolve and grow? This session will cover the latest functionality developed to enhance SE. This session will take a closer look at new features available with SE in the upcoming Synergy release. **Level: Beginner**

## Hands-On: SE Query for Beginners

This session will review the basic characteristics of Special Education Query. Session topics will include selecting data on screen, opening that data in Synergy Query, formatting and outputting data. Attendees will leave with information and resources to guide them in extracting specific data fields to create and format reports of their own. Special education directors, administrative assistants, and compliance staff members will benefit from this session. **Level: Beginner**

## Managing 504 Requirements in SE

You will learn about the newly developed tools in Synergy SE that better separate 504 data and documents from their special education counterparts, along with ways to make this transition smoothly with concurrent use of processes. In addition, you will get an introduction to the large variety of 504 documents available through Synergy SE and hear about the experiences of districts who have built their own 504 documents using UD Document Definition. This session is applicable to attendees from any district, whether your 504 and special education processes are under one department or two. **Level: All**

## Synergy SE: Implementation & Beyond

What are your next steps, now that your Synergy SE solution has been running for a year or three? Are there setup options available right now that can streamline your document preparation or service delivery? Just what is a "Release Note," anyway? Join this workshop-style session for some real-world answers to those questions, from SE districts nationwide who have moved to year three, four, and beyond. (Recommended for partners in the post-implementation phase of Synergy SE use.) **Level: All**

## SE VUE Mobile App & Medicaid

Discover the many capabilities offered in the SE VUE Mobile app for special education, such as Behavior Tracking, Medicaid Service Capture, and Electronic IEP Signatures. We will review the setup for the Medicaid module to show how service providers can track and manage services for their students. Attendees will leave with the ability to set up SE VUE and provide access to their users, along with a working knowledge of the app features. Appropriate for administrative staff, special education administrators, special education teachers, and service providers. **Level: Beginner**

## Hands-On: SE Query for Advanced Users

This course will actively involve participants in expanding the capabilities of the beginning Synergy Special Education Query. We will demonstrate techniques for finding additional database items using searches based on Business Objects, grouping data to create a professional looking report, filtering out unwanted data, creating and sharing reports, as well as scheduling distribution. Appropriate for special education administrators, teachers, and support personnel. Attendees should be familiar with query basics or be able to perform searches by selecting fields directly from the SE Student screens. **Level: Intermediate**

## UD Showcase

Documentation drives decisions! What happens when your district has a new requirement for capturing data and an existing form just won't do? User-Defined Documents can meet the need for forms that match the look and feel of other Synergy SE documents and capture information within the database for ease in reporting and extraction of vital data. Visit with partner districts as they share some of their unique solutions and ways they have capitalized on the flexibility of Synergy SE custom forms. **Level: All**