

June 2015

Derby Public Schools

Performance Dashboard

Irving School

Jennifer Olson, Principal

“People without information cannot act. People with information cannot help but act.”

Ken Blanchard



Promotion:

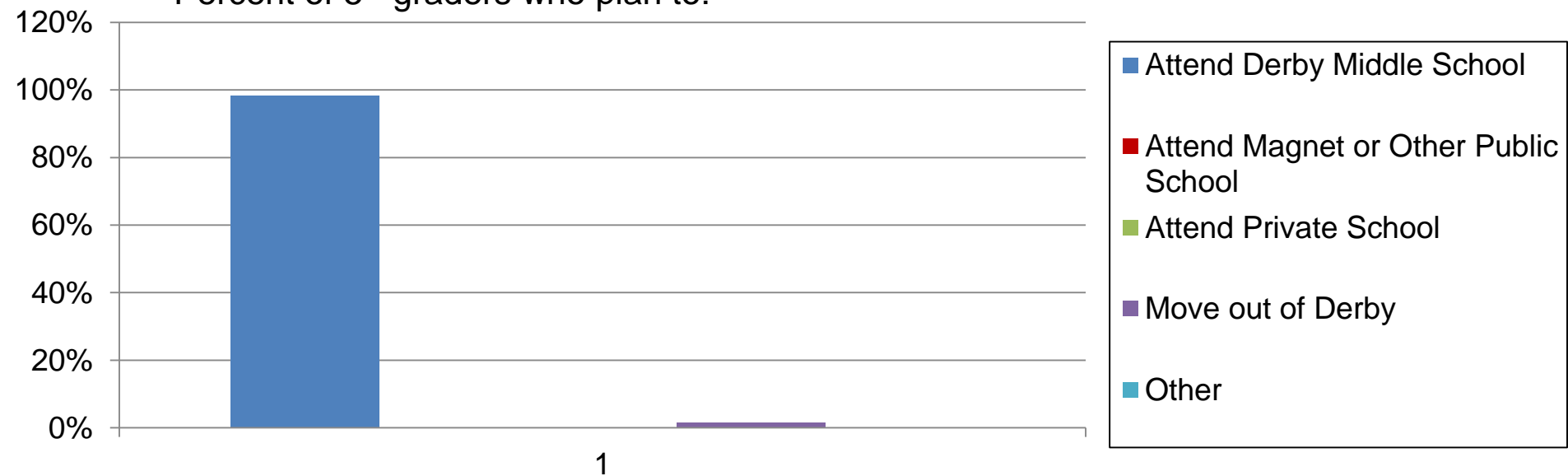
Irving School

Percent of students promoted

	K	1	2	3	4	5
June 2015	100%	100%	100%	100%	100%	100%
June, 2014	100%	98%	100%	100%	100%	100%
June, 2013	100%	99%	98%	100%	100%	100%
June, 2012	97%	97%	100%	100%	100%	100%
June, 2011	99%	100%	100%	100%	100%	100%
June, 2010	99%	100%	98%	100%	100%	100%

Departing 5th Grader Plans

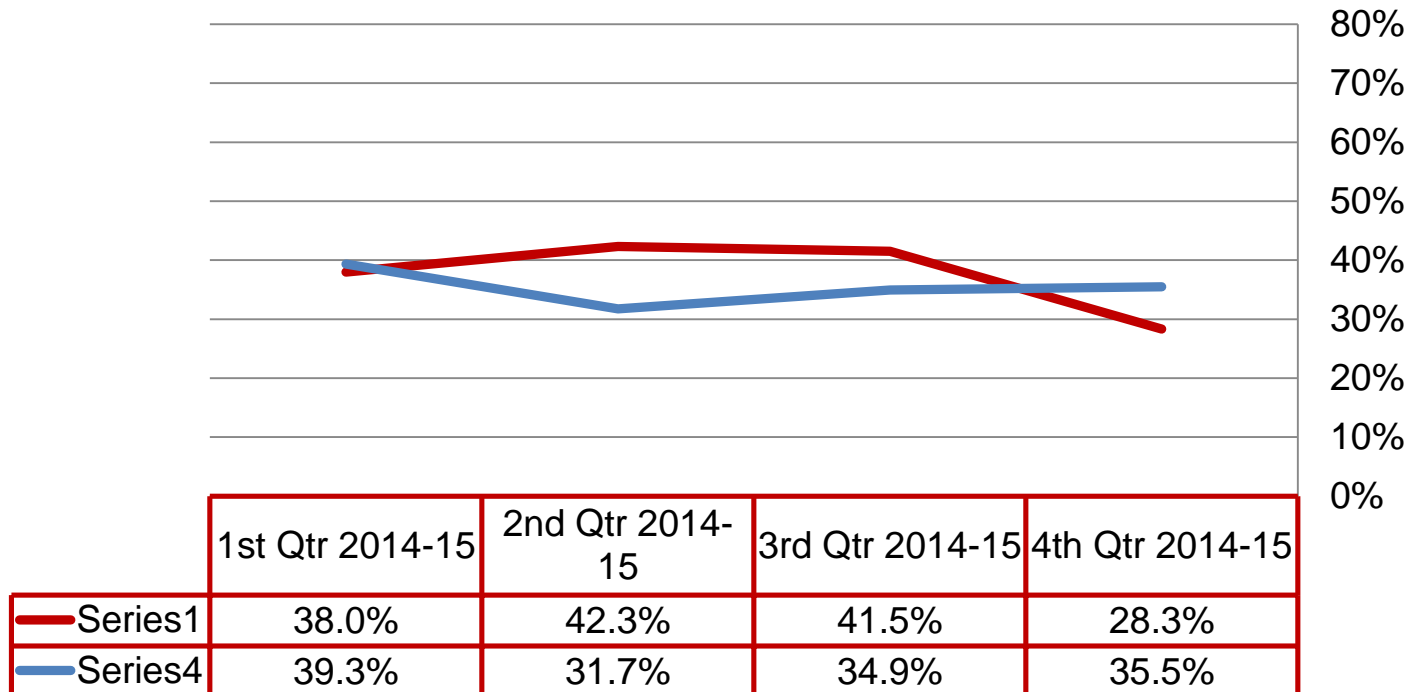
Percent of 5th graders who plan to:



Quarterly Data

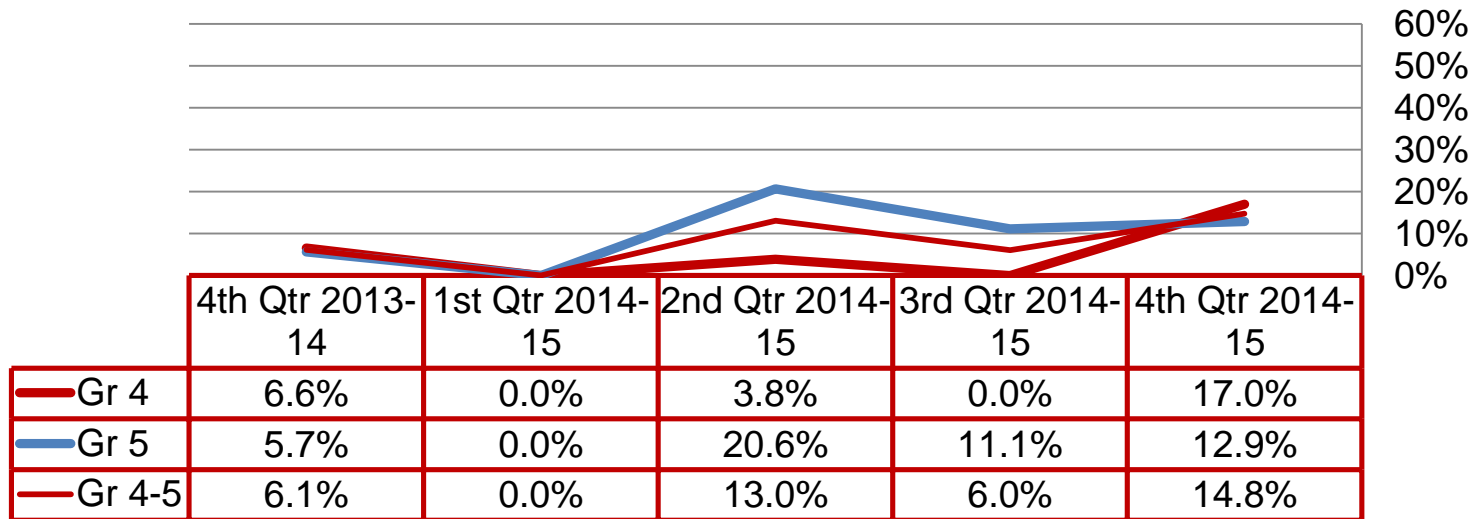
High Grades

Percent of students earning A+, A, A-, B+, B, B- in all subject areas:



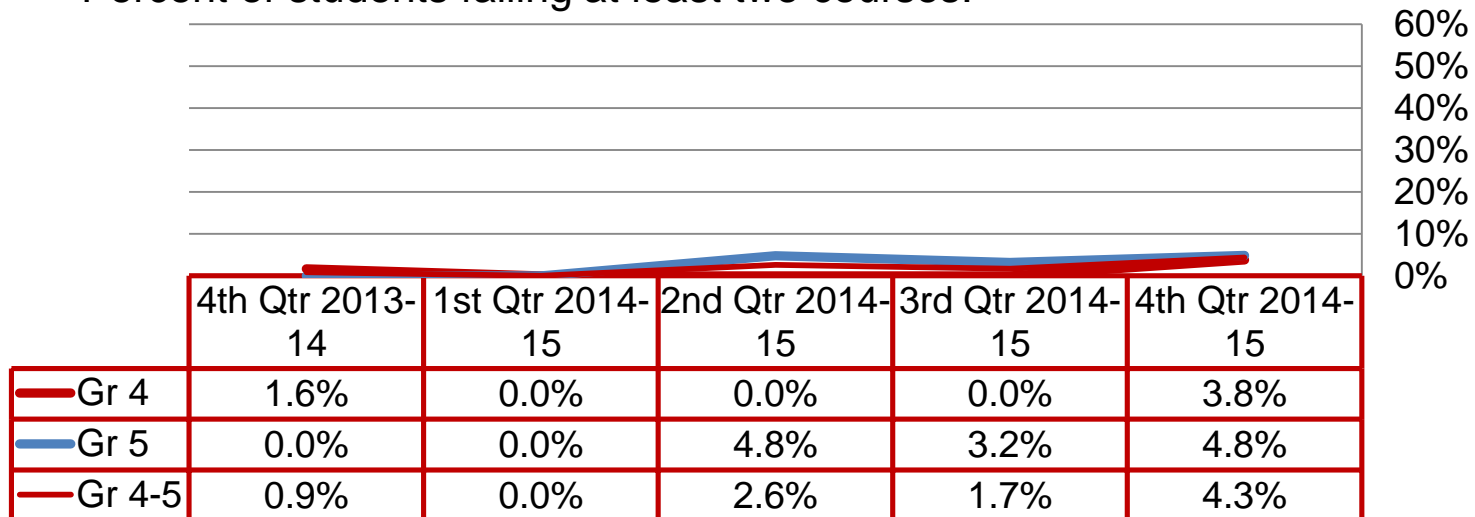
Failing Grades

Percent of students failing at least one course:



Failing Grades

Percent of students failing at least two courses:



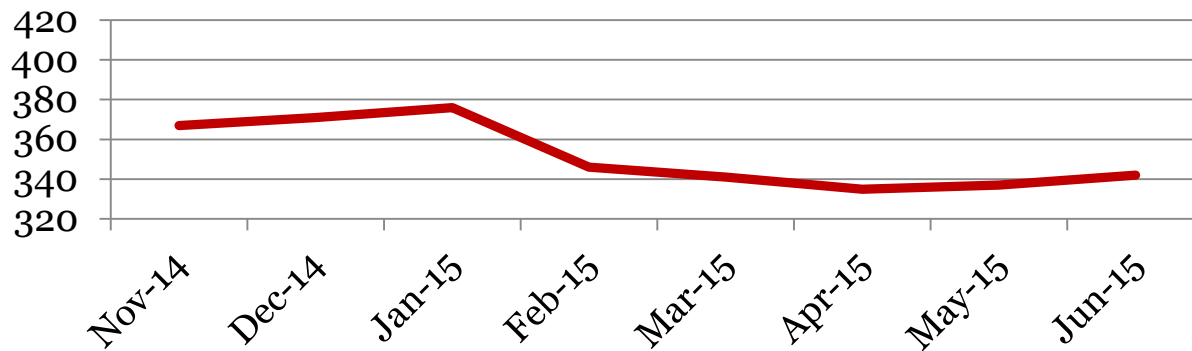
Monthly Data

Irving School

Enrollment – 1st of the month

	PK	K	1	2	3	4	5	Total
Jun-15	n/a	52	51	61	60	55	63	342
May-15	n/a	51	52	58	60	53	63	337
Apr-15	n/a	51	54	55	59	53	63	335
Mar-15	n/a	55	54	56	60	54	62	341
Feb-15	n/a	56	54	59	61	53	63	346
Jan-15	24	56	56	61	63	53	63	376
Dec-14	24	54	55	60	63	52	63	371
Nov-14	23	55	55	59	63	51	61	367
Jun-14	25	57	65	67	45	61	53	373

Total Student Enrollment

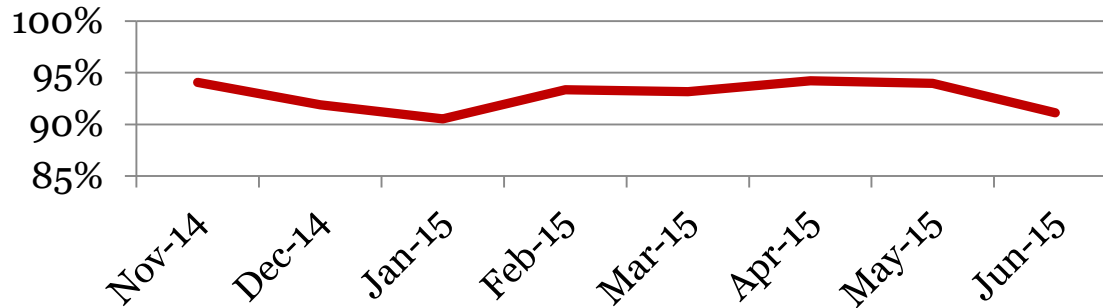


Attendance – Students

Average daily percent present:

	PK	K	1	2	3	4	5	Total
Jun-15		94	93	91	94	92	86	91
May-15		94	95	94	93	96	92	94
Apr-15	n/a	95	95	95	93	96	93	94
Mar-15	n/a	93	91	93	93	94	95	93
Feb-15	n/a	95	93	94	91	94	93	93
Jan-15	79	91	90	93	91	92	91	91
Dec-14	83	93	93	92	94	91	93	92
Nov-14	81	97	94	95	94	95	94	94
Jun-14	93	81	93	95	91	91	94	91

Total Student Attendance



Tardies

Average daily percent tardy:

	PK	K	1	2	3	4	5	Total
Jun-15	n/a	1	1	1	1	1	1	1
May-15	n/a	1	1	1	1	1	1	1
Apr-15	n/a	1	2	1	1	1	1	1
Mar-15	n/a	1	1	1	1	1	1	1
Feb-15	n/a	1	2	1	1	1	1	1
Jan-15	1	1	2	2	1	1	1	1
Dec-14	2	1	2	1	1	1	1	1
Nov-14	2	1	1	1	1	1	1	1
Jun-14	0	1	2	2	1	1	1	1

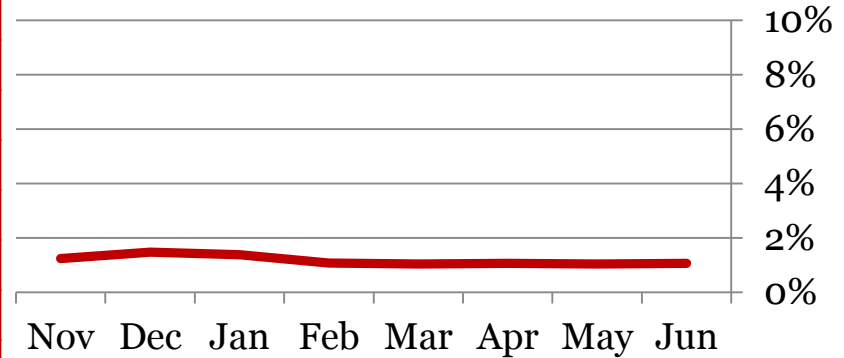
Tardies

Number of students tardy 5 or more days:

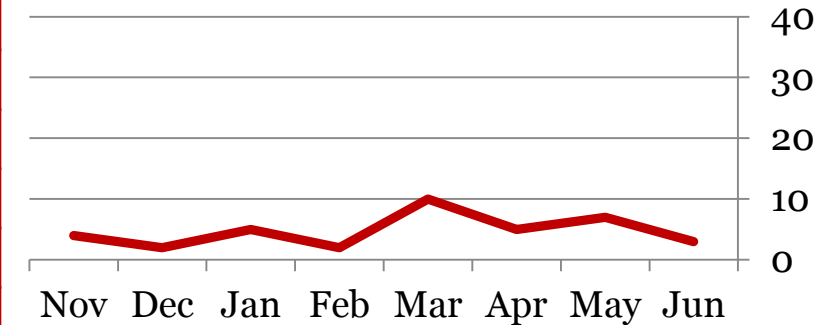
	PK	K	1	2	3	4	5	Total
Jun-15	n/a	0	1	0	1	1	0	3
May-15	n/a	1	3	1	1	1	0	7
Apr-15	n/a	1	0	2	0	2	0	5
Mar-15	n/a	1	3	3	1	2	0	10
Feb-15	n/a	0	1	0	0	1	0	2
Jan-15	1	0	0	2	1	0	1	5
Dec-14	1	0	0	0	1	0	0	2
Nov-14	1	0	2	0	1	0	0	4
Jun-14	0	0	0	0	0	0	0	0

Irving School

Total Student Tardies



Students over Threshold

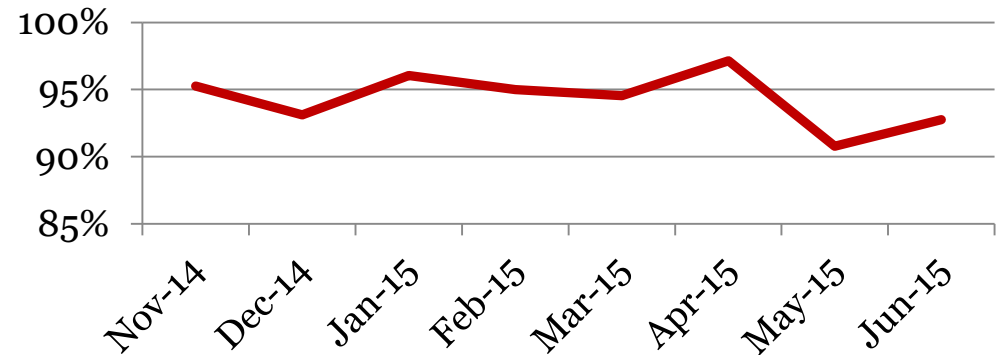


Attendance – Faculty

Average daily percent present:

	Total
Jun-15	93
May-15	91
Apr-15	97
Mar-15	95
Feb-15	95
Jan-15	96
Dec-14	93
Nov-14	95
Jun-14	94

Faculty Attendance



**This indicator reflects certified staff and does not include absences created by class trips, professional development, workman's comp and FMLA. However % may be reduced due to long term illness beyond FMLA.*

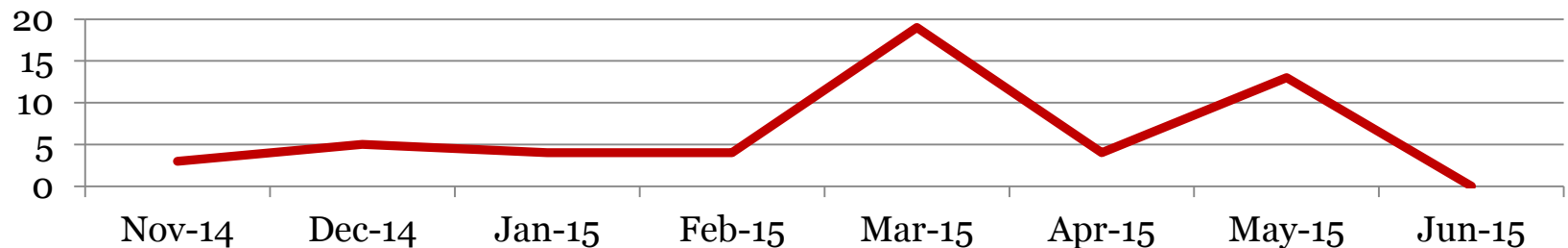
Suspensions – Out of School

Irving School

Number of student suspensions (total days of suspension):

	PK		K		1		2		3		4		5		Total	
Jun-15	n/a	0	0	0	0	0	0	0	0	0	0	0	0	0	0	0
May-15	n/a	0	0	0	8	4	10	9	0	0	0	0	0	0	18	13
Apr-15	0	(0)	3	(3)	0	(0)	0	(0)	0	(0)	0	(0)	1	(1)	4	(4)
Mar-15	0	(0)	0	(0)	2	(4)	9	(12)	2	(2)	1	(1)	0	(0)	14	(19)
Feb-15	0	(0)	0	(0)	0	(0)	2	(2)	1	(2)	0	(0)	0	(0)	3	(4)
Jan-15	0	(0)	2	(2)	0	(0)	0	(0)	0	(0)	2	(2)	0	(0)	4	(4)
Dec-14	0	(0)	0	(0)	1	(1)	2	(3)	0	(0)	1	(1)	0	(0)	4	(5)
Nov-14	0	(0)	0	(0)	0	(0)	2	(3)	0	(0)	0	(0)	0	(0)	2	(3)
Jun-14	0	0	0	0	0	0	0	0	0	0	0	0	0	0	0	0

Total Out of School Suspension



Suspensions – In School

Irving School

Number of student suspensions (total days of suspension):

	PK		K		1		2		3		4		5		Total	
Jun-15	0	0	0	0	0	0	0	0	0	0	0	0	0	0	0	0
May-15	0	0	0	0	0	0	0	0	0	0	0	0	0	0	0	0
Apr-15	0	(0)	0	(0)	0	(0)	0	(0)	0	(0)	0	(0)	0	(0)	0	(0)
Mar-15	0	(0)	0	(0)	0	(0)	0	(0)	0	(0)	0	(0)	0	(0)	0	(0)
Feb-15	0	(0)	0	(0)	0	(0)	0	(0)	0	(0)	0	(0)	0	(0)	0	(0)
Jan-15	0	(0)	0	(0)	0	(0)	0	(0)	0	(0)	0	(0)	0	(0)	0	(0)
Dec-14	0	(0)	0	(0)	0	(0)	1	(1)	0	(0)	0	(0)	0	(0)	1	(1)
Nov-14	0	(0)	0	(0)	0	(0)	0	(0)	0	(0)	0	(0)	0	(0)	0	(0)
Jun-14	0	0	0	0	0	0	0	0	0	0	0	0	0	0	0	0

Total In School Suspensions

