

Rahn Elementary School

November 20, 2025

Dr. Chris Bellmont, assistant superintendent

Brad Robb, principal

Lori Keuler, learning specialist, BLT member

School of Excellence

Telling our story

Learning from the
community

Developing a plan



What Makes Rahn Excellent

Our community's perspective



- Curiosity
- Creativity
- Achievement
- Community
- Engaging All Families
- Supportive
- High Expectations
- Inclusive
- Partnerships

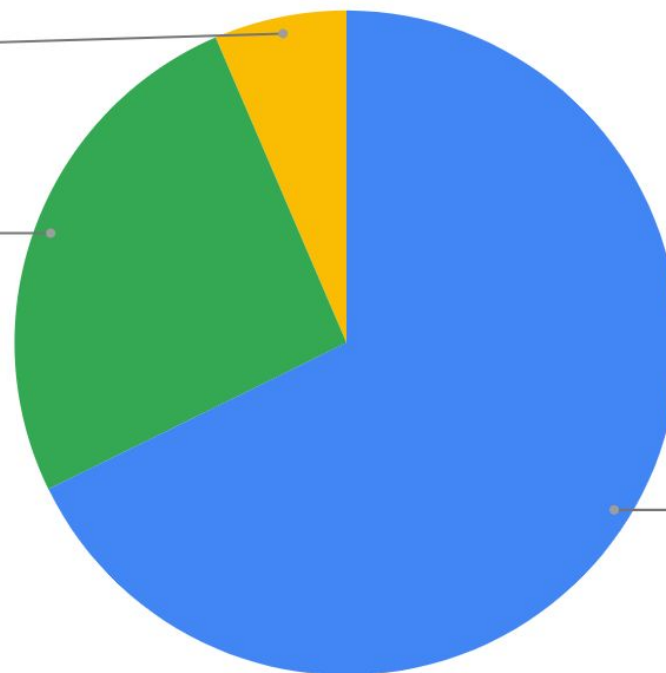
What Makes Rahn Excellent

Our community's perspective

The school staff and students have high expectations for their learning and performance

3 (Average)
6.5%

4
25.8%



5 (outstanding)
67.7%

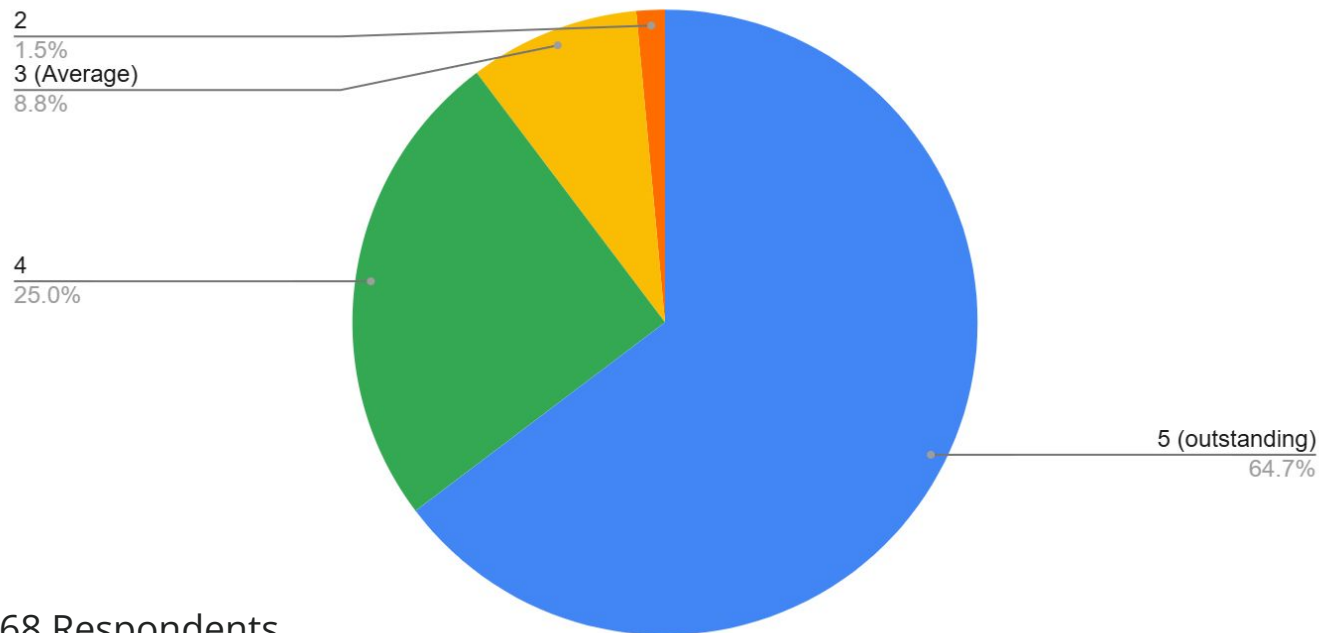
62 Respondents

- Curiosity
- Creativity
- Achievement
- Community
- Engaging All Families
- Supportive
- High Expectations
- Inclusive
- Partnerships

What Makes Rahn Excellent

Our community's perspective

The Rahn Community continually seeks ways to support students and adults in learning and growing by embracing diverse people, ideas, perspectives, and experiences.

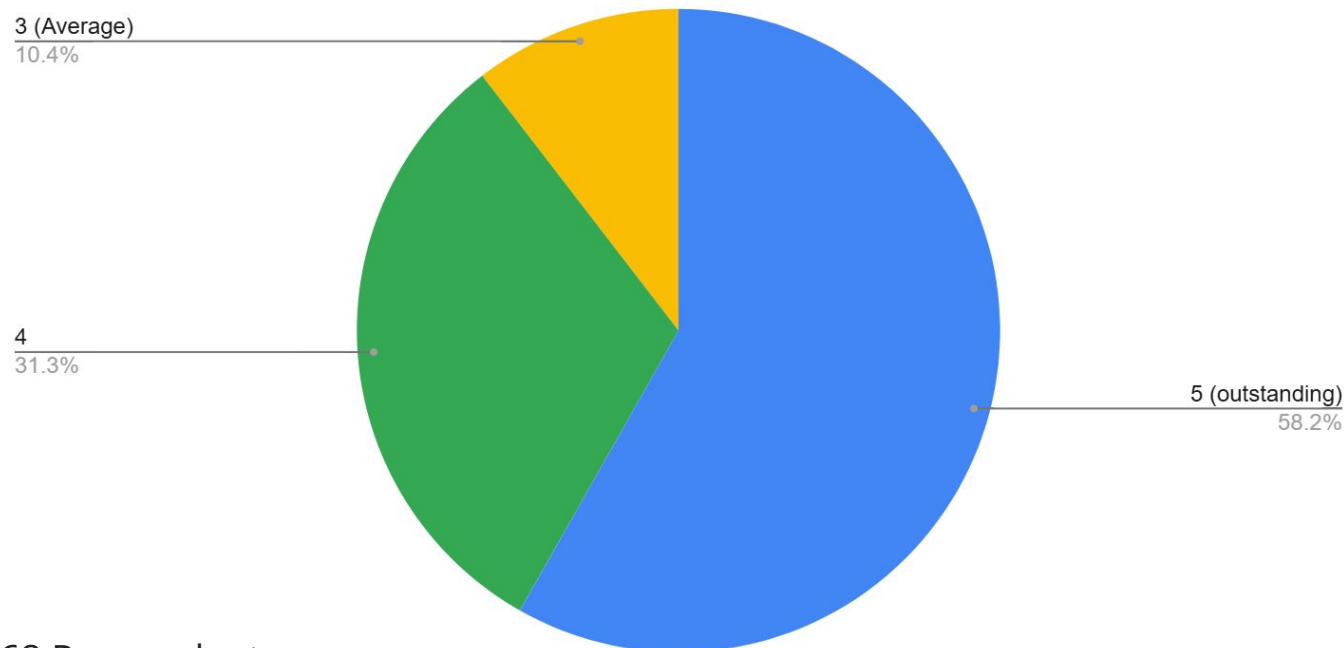


- Curiosity
- Creativity
- Achievement
- Community
- Engaging All Families
- Supportive
- High Expectations
- Inclusive
- Partnerships

What Makes Rahn Excellent

Our community's perspective

The principal, teachers, and community members consistently implement a balanced whole child learning culture for all students, including in- and out-of-school learning experiences provided by the school and community.



68 Respondents

- Curiosity
- Creativity
- Achievement
- Community
- Engaging All Families
- Supportive
- High Expectations
- Inclusive
- Partnerships

School Goal

At Rahn Elementary, K-5 students starting the year at "Some Risk" or "High Risk" on FastBridge Early Reading (K & 1) and aReading (2-5) will increase "Typical" or "Aggressive Growth" from 48% (2023-2024) to 60% (2024-2025). AND K-5 students starting at "Low Risk" or "Advanced" on the same assessments will maintain those categories, increasing from 86.47% (2023-2024) to 90% (2024-2025).



Aligned to MnMTSS

The two categories of students and goals are aligned to the Minnesota Multi-Tiered Systems of Supports (MnMTSS)



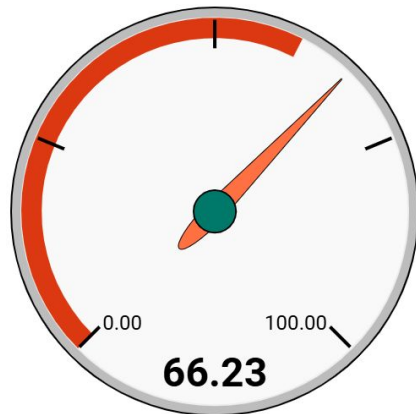
Narrow our Focus

This goal allows us to target the greatest areas of need for our students.

Achievement

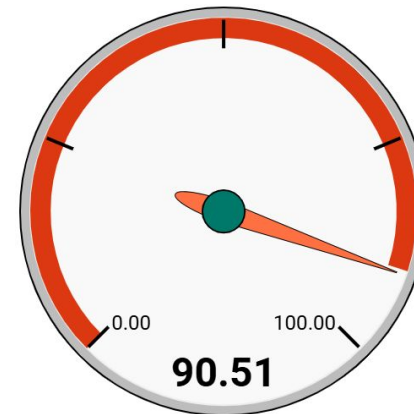
Achieving our School Goal

Students starting below benchmark making typical or aggressive growth



Over 18%
increase
FY '24 -
FY '25

Students starting at benchmark or above staying at benchmark or above



Over 4%
increase
FY '24 -
FY '25

Red bar indicates goal; the meter dial indicates our actual achievement

Achievement

A few highlights...

- In 1st grade...90% of students who started below benchmark, had typical or aggressive growth & 100% of students who started at benchmark, stayed at benchmark or above from Fall '24 to Spring '25.
- In 5th grade...95% of students who started at benchmark or above in aReading, stayed at benchmark or above. Of all 5th grade students, 76% grew typically or aggressively.
- In 5th grade...The percentage of students who achieved 'proficient' on the Reading MCA increased from 49.3% to 60%. In Math, the increase was from 48.2% to 60% proficient.
- Reading MCA scores (in Grade 5) continue to be higher than the state average by 11 percentage points.

Achievement

A few highlights...

- 79% of our Multilingual students made average progress toward target - 33 percentage points higher than the state average.
- 51.6% of our Multilingual students met or exceeded their learning target - 23 percentage points higher than the state average.

Rahn Elementary



***An inclusive learning community working together
to inspire curiosity, creativity, and achievement.***

