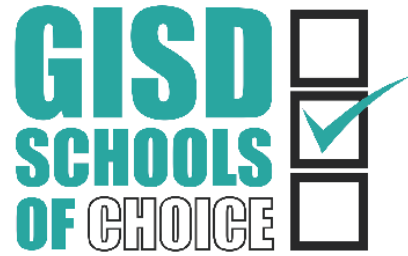


GISD
SCHOOLS
OF CHOICE



2021 - 2022

Application Dates



To apply, please visit
www.gisd.org

Ball High School Application Dates:
January 11 - February 12, 2021

Middle School Application Dates:
February 1 - March 1, 2021


Elementary School Application Dates:
February 22 - March 26, 2021

Communication

- Direct mail letters to families of incoming freshmen, fifth graders, and kindergarteners
- Emails and texts to families of incoming freshmen, fifth graders, and kindergarteners
- Direct all-calls to families of incoming freshmen, fifth graders, and kindergarteners
- Digital flyers with links on Facebook, district website, and campus websites
- Virtual Parent Information Nights
 - High School – January 14
 - Middle School – TBD
 - Elementary – TBD



Family Access Coordination



GALVESTON ISD
SCHOOLS OF CHOICE KEYWORD GUIDE

C	A	R	E
COURSE SELECTION	APPLY	REGISTER	ENROLL
Who selects courses?	Who applies?	Who registers?	Who enrolls?
*Continuing students in grades 5th-12th make COURSE SELECTIONS	*Students new to the district *Students entering Kinder, 5th & 9th grades *Students wanting to change campuses	*ALL returning GISD students entering 1st - 12th grades REGISTER every year online, May 1-31, 2021 in Skyward Family Access for the following school year	*Students new to the district this year *Students entering Kindergarten *Pre-K students ENROLL at the student's assigned campus beginning in Spring 2021
Students meet with a school counselor prior to the next school year to select courses	APPLY to their desired school starting in January 2021 at gisdschoolsofchoice.org		

INDEPENDENT SCHOOL DISTRICT
GALVESTON
Island of Excellence - World of Opportunities
www.gisd.org/SchoolsOfChoice



BHS HIGH SCHOOL

BHS SMALL LEARNING COMMUNITIES APPLICATIONS OPEN
JANUARY 11 - FEBRUARY 12, 2021

INCOMING FRESHMEN 2021-2022

APPLY ONLINE AT: GISDSCHOOLSOFCHOICE.ORG

WHO: PARENTS OF EIGHTH-GRADE STUDENTS ENTERING NINTH GRADE IN 2021-2022.

WHAT: SELECT A SMALLER LEARNING COMMUNITY: BIOMEDICAL, STEM, INNOVATION & ENTREPRENEURSHIP, OR MEDIA ARTS & DIGITAL TECHNOLOGY.

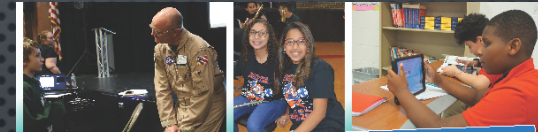
WHEN: THE APPLICATION PERIOD FOR BALL HIGH SCHOOL WILL BE OPEN BETWEEN JANUARY 11 AT 8 A.M. - FEBRUARY 12 AT 4 P.M.

HOW: PARENTS COMPLETE AN ONLINE APPLICATION AT WWW.GISDSCHOOLSOFCHOICE.ORG.

LEARN MORE ABOUT BALL HIGH SCHOOL AND THE COMMUNITIES AT THE VIRTUAL PARENT/STUDENT NIGHT VIA ZOOM ON JANUARY 14 AT 6 P.M.

STEM	BIOMED	INNOVATION	MEDIA
CURRICULUM FOCUSED ON SCIENCE, TECHNOLOGY, ENGINEERING AND MATHEMATICS	CURRICULUM FOCUSED ON BIOMEDICAL ENGINEERING AND MEDICAL PROFESSIONS	CURRICULUM FOCUSED ON INNOVATION AND ENTREPRENEURSHIP	CURRICULUM FOCUSED ON MEDIA ARTS AND DIGITAL TECHNOLOGY

LEARN MORE ABOUT THE COMMUNITIES HERE: WWW.GISD.ORG/COMMUNITIES



GALVESTON ISD

MIDDLE SCHOOL APPLICATION INFO

ALL MIDDLE SCHOOLS
FEBRUARY 1 - MARCH 1, 2021

APPLY ONLINE AT: GISDSCHOOLSOFCHOICE.ORG


WHO: PARENTS OF STUDENTS WHO ARE ENTERING FIFTH GRADE AND MIDDLE SCHOOLERS WHO ARE NEW TO THE DISTRICT OR WANT TO TRANSFER.

WHAT: THIS IS YOUR OPPORTUNITY TO TELL US WHAT MIDDLE SCHOOL YOUR STUDENT WOULD LIKE TO ATTEND. AUSTIN MIDDLE SCHOOL, COLLEGIATE ACADEMY, CENTRAL MIDDLE SCHOOL OR CRENSHAW.

WHEN: PARENTS COMPLETE AN ONLINE APPLICATION AT WWW.GISDSCHOOLSOFCHOICE.ORG BETWEEN FEBRUARY 1 AT 8AM AND MARCH 1 AT 4PM.

NOTIFICATION: SCHOOL ASSIGNMENTS WILL BE SENT BY MAIL NO LATER THAN MARCH 14, 2021

FOR MORE INFORMATION PLEASE VISIT WWW.GISD.ORG/SCHOOLSOFCHOICE OR CALL 409-766-5123



GALVESTON ISD

ELEMENTARY APPLICATIONS OPEN
FEBRUARY 22 - MARCH 26, 2021

INCOMING KINDERGARTEN 2021-2022

APPLY ONLINE AT: GISDSCHOOLSOFCHOICE.ORG

WHO: STUDENTS ENTERING KINDERGARTEN IN THE 2021-22 SCHOOL YEAR OR CURRENT ELEMENTARY STUDENTS REQUESTING TO MOVE TO A DIFFERENT CAMPUS

WHEN: PARENTS COMPLETE AN ONLINE APPLICATION AT WWW.GISDSCHOOLSOFCHOICE.ORG BETWEEN FEBRUARY 22 AT 8AM - MARCH 26, 2021 AT 4PM.

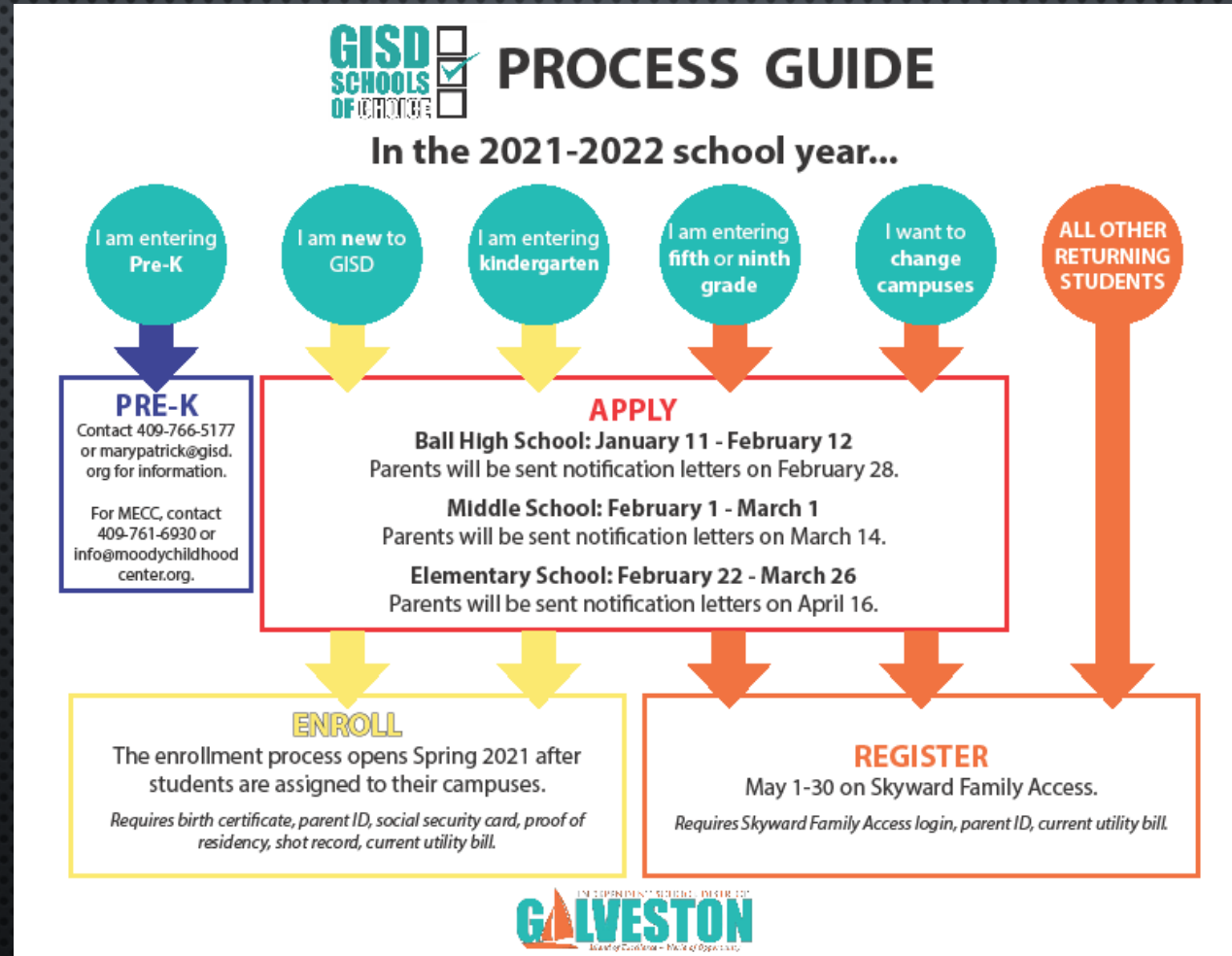
NOTIFICATION: SCHOOL ASSIGNMENT WILL BE SENT BY MAIL NO LATER THAN APRIL 16, 2021.

CAMPUS MAP:

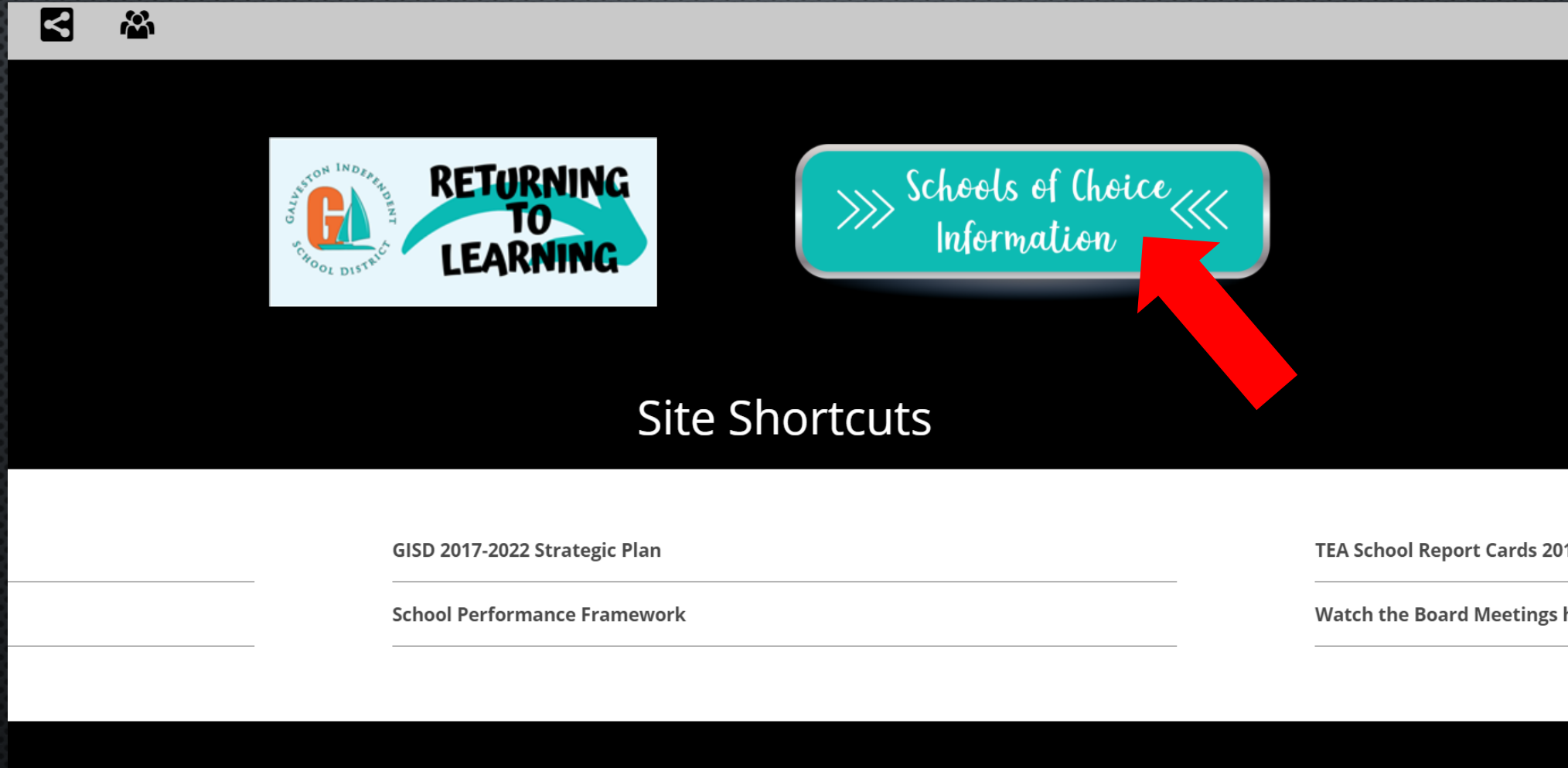
- ROSENBERG (MICROSCOPY)
- MORGAN (HEALTH & FITNESS)
- PARKER (DIVERSITY)
- BURNET (STREAM)
- OPPE (COASTAL STUDIES)
- CRENSHAW (ENVIRONMENTAL SCIENCE)

FOR MORE INFORMATION PLEASE VISIT WWW.GISD.ORG/SCHOOLSOFCHOICE OR CALL 409-766-5123

Process Guide



www.gisd.org/schoolsofchoice



www.gisd.org/schoolsofchoice

Schools Of Choice

Schools of Choice (SOC) +
Information

APPLICATION Information +

COURSE SELECTION

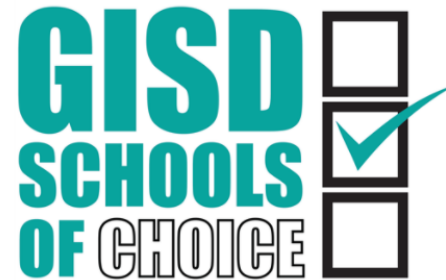
REGISTRATION Information
(Current Students)

ENROLLMENT Information
(Kinder and New Students)

New Student Application for
Current School Year (2020-
2021)

Map of GISD Schools

Ball High School Virtual Parent
Information Night



The Schools of Choice model allows families options of which school to attend within a school system. It is one of the most unique school systems in Texas that it allows parents to send their children to the school that best serves their interests and needs. There are no school zones and transportation is provided to students to all campuses*. Students are able to attend the school of their choice provided the district has available seats at the selected school.

Galveston ISD offers traditional and theme based schools, charter schools, Science, Technology, Engineering, & Math (STEM) programs, magnet schools, and a Mega-Magnet High School with four smaller learning communities. Students are aided by open enrollment, as well as the absence of school zones throughout the district.

For more information on applying to GISD Schools, contact Nanette Dickerson at nanettedickerson@gisd.org or 409-766-5123.

Who needs to submit an application?

- Students entering kindergarten
- Student entering fifth grade
- Students entering ninth grade
- Students wishing to change campuses in the next school year
- Students new to the district

Applications may be submitted at any time during the application windows and are not guaranteed on a first-come first-serve basis.

[CLICK HERE TO APPLY for the 2021-22 School Year](#)

www.gisd.org/schoolsofchoice

Schools Of Choice	
Schools of Choice (SOC) Information	+
APPLICATION Information	▼
Ball High School Application Flyer Middle School Application Flyer	
COURSE SELECTION	
REGISTRATION Information (Current Students)	
ENROLLMENT Information (Kinder and New Students)	
New Student Application for Current School Year (2020-2021)	
Map of GISD Schools	
Ball High School Virtual Parent Information Night	
<h2>Application Dates by Grade Level</h2> <div> <h3>High School</h3> <p>January 11 - February 12</p> <ul style="list-style-type: none"> ◦ Eighth graders applying to Ball High School for the 2021-22 school year ◦ Current students wishing to change their campus to Ball High School for the 2021-22 school year ◦ APPLY HERE ◦ Applications will be open from January 11, 2021 at 8:00 a.m. until February 12, 2021 at 4:00 p.m. ◦ Notification: School assignments will be sent by mail no later than February 28, 2021. </div> <div> <h3>Middle School</h3> <p>February 1 - March 1</p> <p>CHOICES: Austin Middle School, Central Middle School, Collegiate Academy Middle School at Weis, Crenshaw Middle School*</p> <ul style="list-style-type: none"> ◦ Students going into fifth grade for the 2021-22 school year ◦ Current students wishing to change to a different middle school campus in the 2021-22 school year ◦ APPLY HERE ◦ Applications will be open from February 1, 2021 at 8:00 a.m. until March 1, 2021 at 4:00 p.m. ◦ Notification: School assignments will be sent by mail no later than March 14, 2021. </div> <div> <h3>Elementary School</h3> <p>February 22 - March 26</p> <p>CHOICES: Burnet Elementary School, Crenshaw Elementary School*, Morgan Elementary School, Oppe Elementary School, Parker Elementary School, Rosenberg Elementary School</p> <ul style="list-style-type: none"> ◦ Students going into Kindergarten in the 2021-2022 school year ◦ Current students wishing to change to a different elementary campus in the 2021-22 school year ◦ APPLY HERE ◦ Applications will be open from February 22, 2021 at 8:00 a.m. until March 26, 2021 at 4:00 p.m. ◦ Notification: School assignments will be sent by mail no later than April 16, 2021. </div>	

GISD
SCHOOLS
OF CHOICE



2021 - 2022