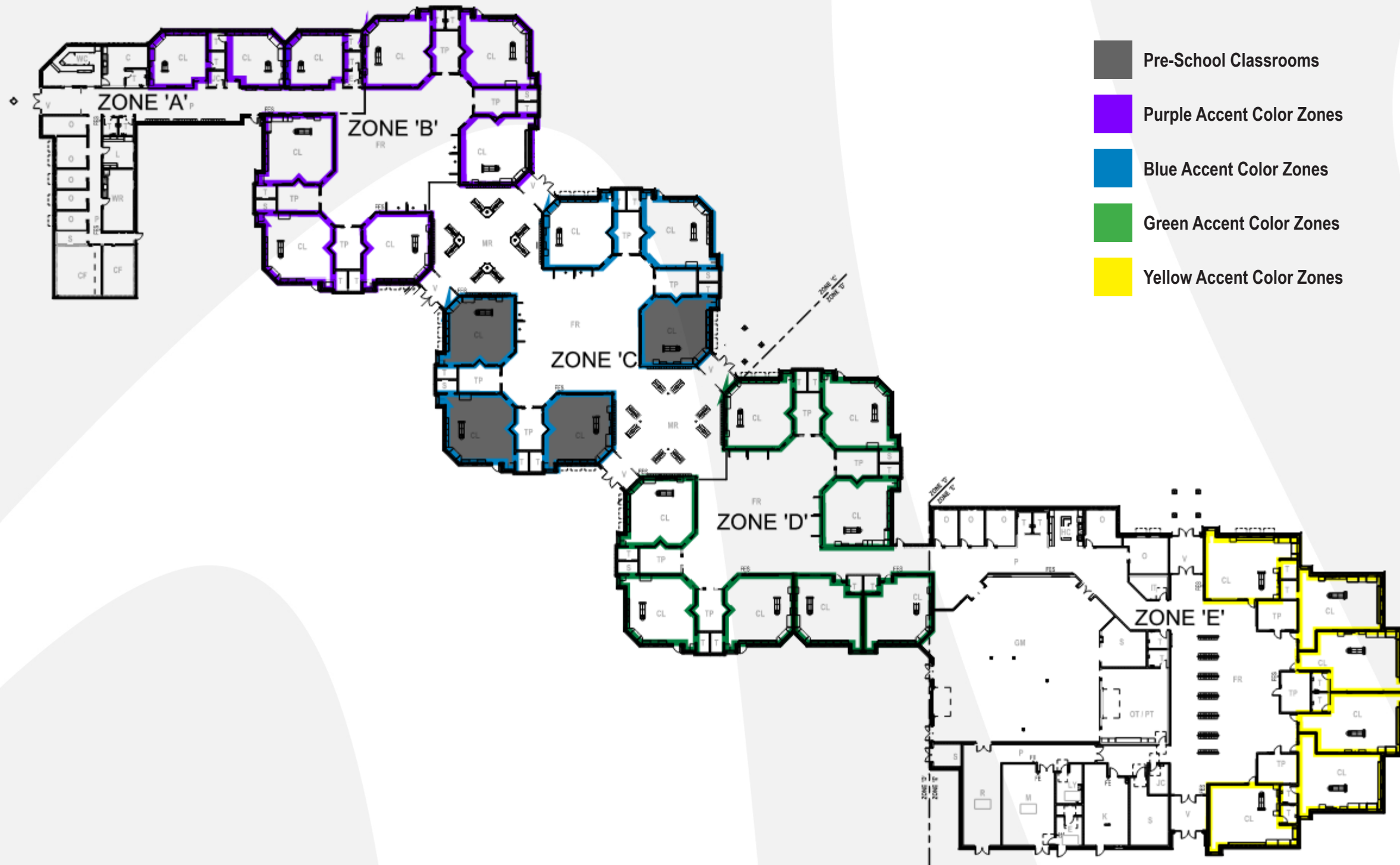




# Livonia Early Childhood Center Furniture Design Final Selections

# Pre-School Classroom Locations



# Pre-School Classroom Rendering





# Pre-School Classroom Rendering



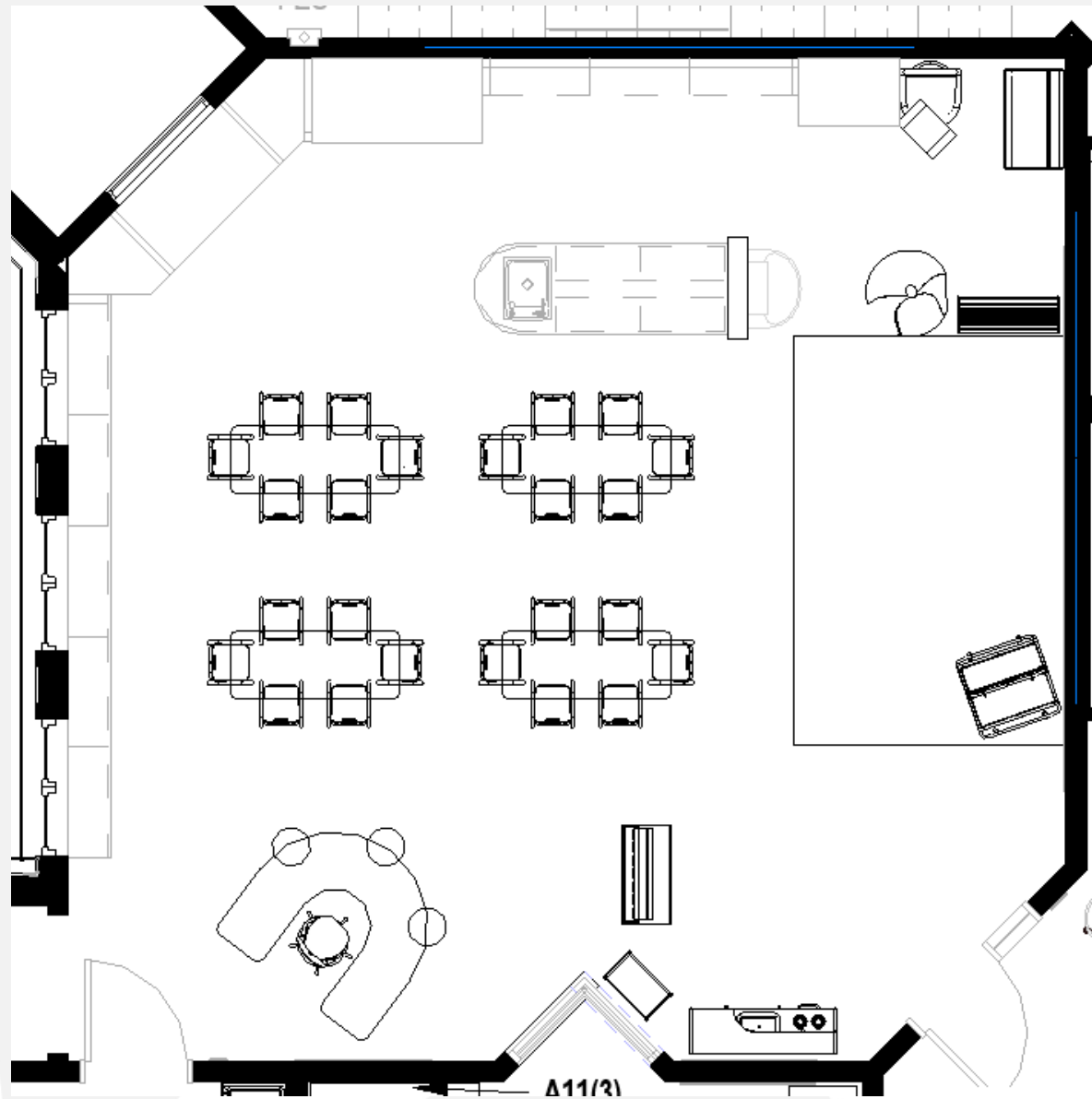


# Pre-School Classroom Rendering





# Pre-School Classroom



## COLLABORATION



**Lakeshore - Heavy Duty Stacking Chairs**  
 Size: 13.5" (without arms)  
 All Stack 3 high  
 Qty: 24



**KI - Ruckus Rectangle Table**  
 Size: 24" x 60" x 20-33" H  
 Qty: 4



**KI - Ruckus Horseshoe Shape Table**  
 Size: 60" x 66" x 20-33" H  
 Qty: 1



**Lakeshore Flex-Space Student Lap Desk**  
 Size: 18" W x 12" D x 11" H  
 Qty: 1



**Lakeshore Flex-Space Comfy Floor Seat**  
 Seat: 22" wide  
 Qty: 1



**VS America Hokki Stool**  
 Size: 12 1/4" H x 13" D  
 Qty: 3



**VS America PantoMove-LuPo**  
 Adjusts from 13.5" to 18" H  
 Qty: 1

## PLAY AREA



**Whitney Brothers Contemporary Kitchen Combo**  
 Size: 48.25"W x 14.75"D x 39.25"H  
 Qty: 1 in Each Classroom



**Jonti-Craft Traditional Doll Bed**  
 Size: 12.5" W x 20.5" D x 9" H  
 Qty: 1 in Each Classroom



**Whitney Brothers Market Stand**  
 Size: 33" W x 16.75" D x 48" H  
 Qty: 2 Total for Pre-School Classrooms



**Jonti-Craft Dress-Up Center with Bins**  
 Size: 38.5" H x 48" W x 23" D  
 Qty: 2 Total for Pre-School Classrooms

## CHANGING TABLE



**Jonti-Craft - Diaper Changer with Stairs**  
 Cubbies behind closed doors  
 Size: 38.5" H x 48.5" W x 23.5" D  
 Stair Width: 14-5/8"  
 Qty: 1

## CALMING CORNER



**Lakeshore Flex-Space Lounge & Learn Couch**  
 Size: 35" w x 21" d x 25" h, 14" seat height  
 Qty: 1



**Lakeshore Calming Colors Beanbag**  
 Color: Green  
 Size: 30" w x 21" h  
 Qty: 1

## READING AND WRITING



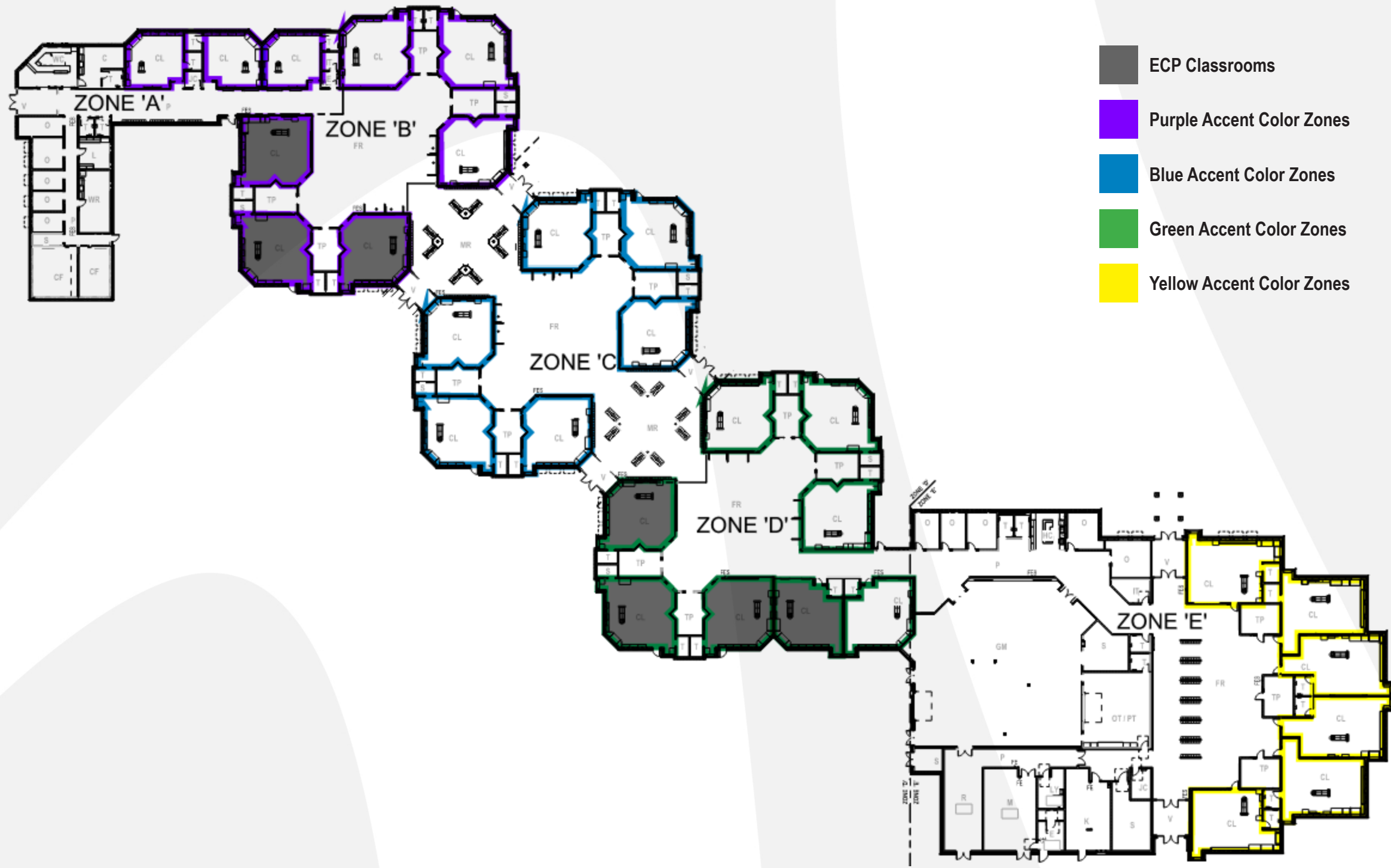
**Lakeshore All-Purpose Teaching Easel**  
 Whiteboard and felt board  
 Size: 30" W x 52" H  
 Qty: 1



**Jonti-Craft Flush back Wide Pick-a-Book Stand**  
 Size: 27.5" H x 36" W x 13.5" D  
 Qty: 1



# ECP Classroom Locations





# ECP Classroom Rendering



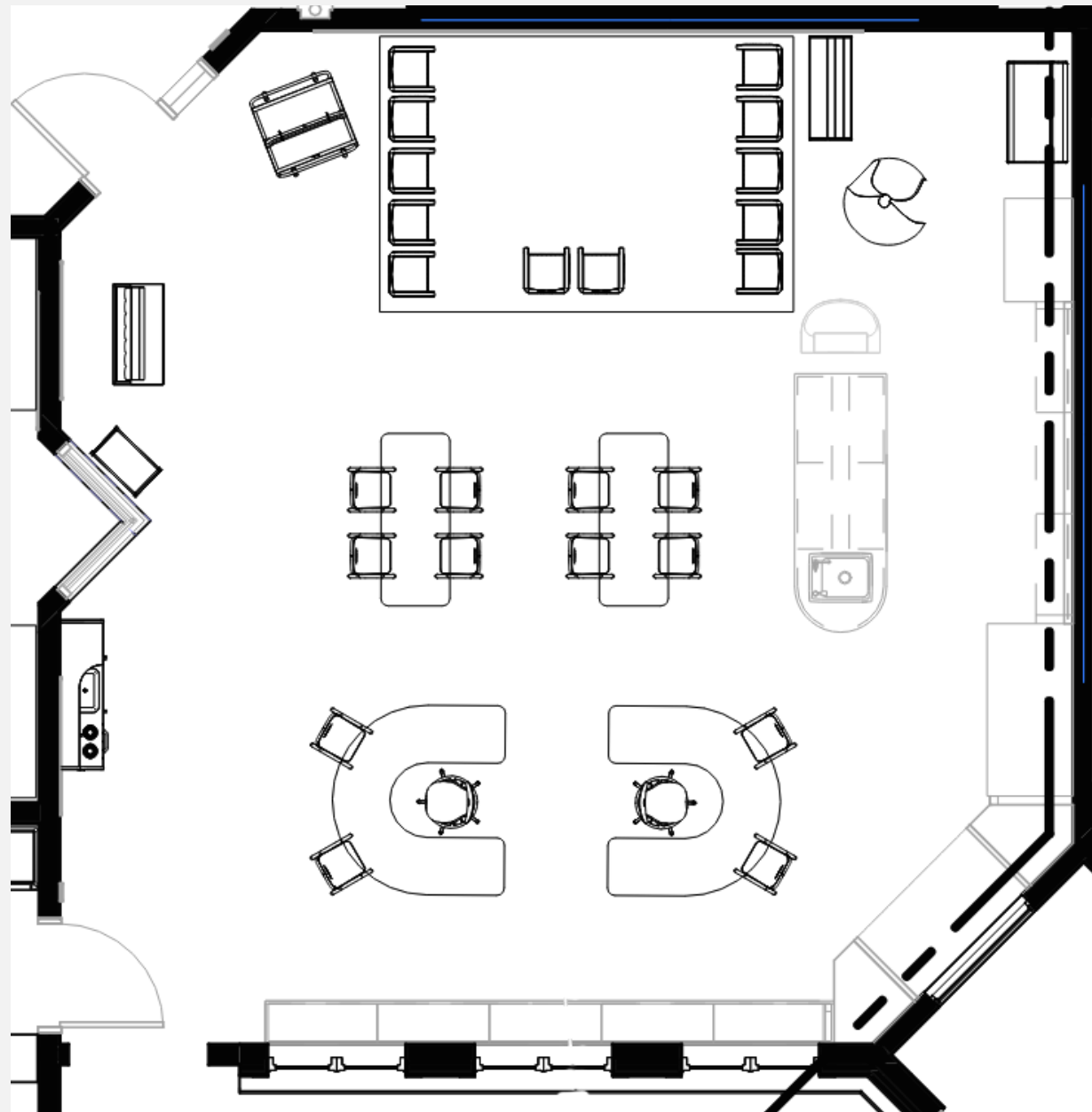


# ECP Classroom Rendering





# ECP Classroom



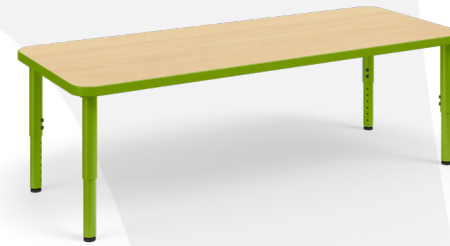
## COLLABORATION



**Lakeshore - Heavy Duty Stacking Chairs**  
13.5" (without arms)  
All Stack 3 high  
Qty: 12



**Lakeshore 3 in 1 Cube Chair**  
Chair turns over to become a 6" seat, a 9 1/2" seat or a 15 1/2" table  
Qty: 12



**KI - Ruckus Rectangle Table**  
Size: 24" x 60" x 20-33" H  
Qty: 2



**KI - Ruckus Horseshoe Shape Table**  
Size: 60" x 66" x 20-33" H  
Qty: 2



**VS America PantoMove-LuPo**  
Adjusts from 13.5" to 18" H  
Qty: 2

## PLAY AREA



**Whitney Brothers Contemporary Kitchen Combo**  
Size: 48.25"W x 14.75"D x 39.25"H  
Qty: 1 in Each Classroom



**Jonti-Craft Traditional Doll Bed**  
Size: 12.5" W x 20.5" D x 9" H  
Qty: 1 in Each Classroom



**Whitney Brothers Market Stand**  
Size: 33" W x 16.75" D x 48" H  
Qty: 4 Total for ECP Classrooms



**Jonti-Craft Dress-Up Center with Bins**  
Size: 38.5" H x 48" W x 23" D  
Qty: 3 Total for ECP Classrooms

## CHANGING TABLE



**Jonti-Craft - Diaper Changer with Stairs**  
Cubbies behind closed doors  
Size: 38.5" H x 48.5" W x 23.5" D  
Stair Width: 14-5/8"  
Qty: 1

## CALMING CORNER



**Lakeshore Flex-Space Lounge & Learn Couch**  
Size: 35"w x 21"d x 25"h, 14" seat height  
Qty: 1



**Lakeshore Calming Colors Beanbag**  
Color: Green  
Size: 30" w x 21" h  
Qty: 1

## READING AND WRITING



**Lakeshore All-Purpose Teaching Easel**  
Whiteboard and felt board  
Size: 30"W x 52" H  
Qty: 1



**Jonti-Craft Flush back Wide Pick-a-Book Stand**  
Size: 27.5" H x 36" W x 13.5" D  
Qty: 1







# Childcare Classroom 4-5 Rendering



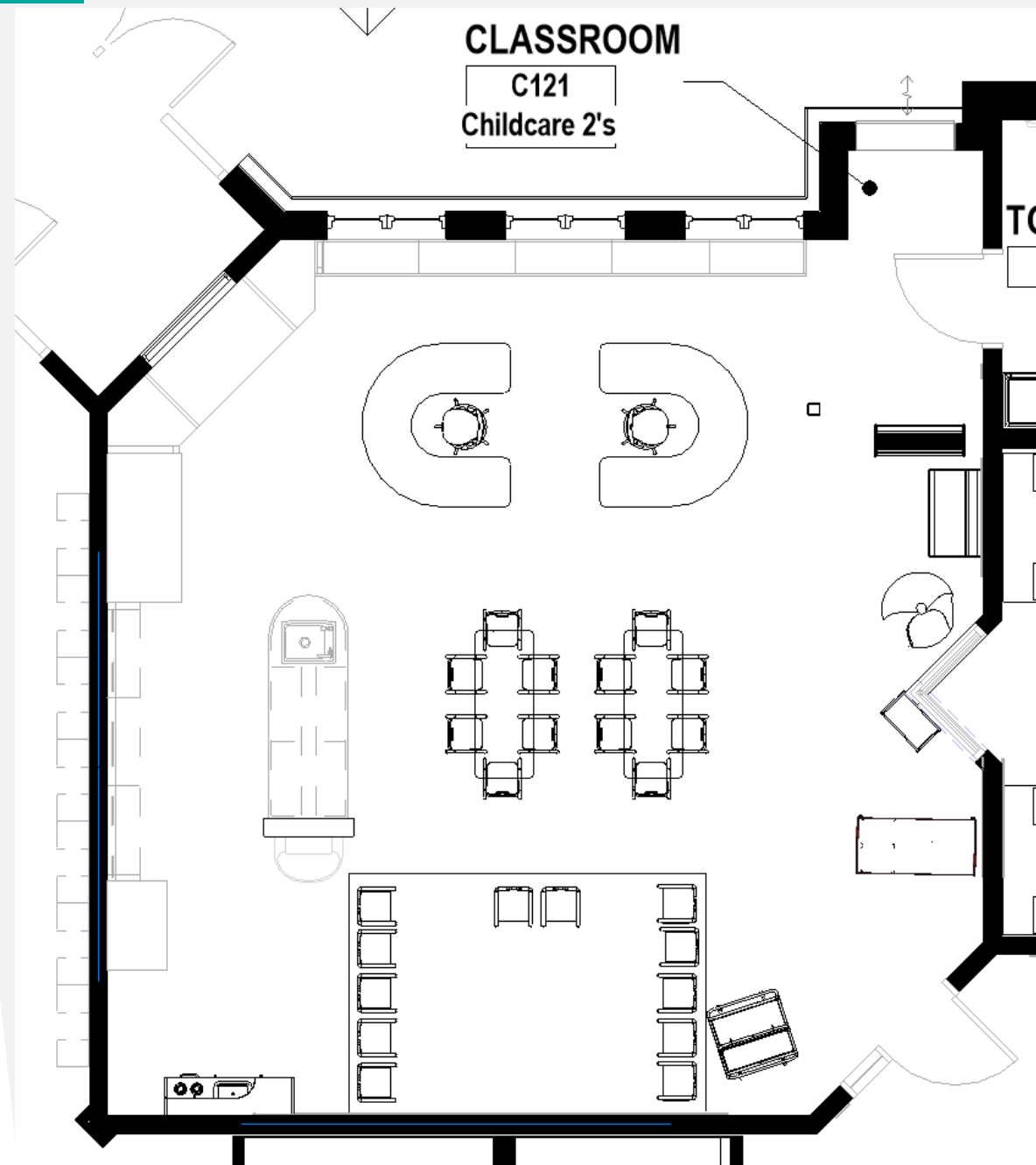


# Childcare Classroom 4-5 Rendering





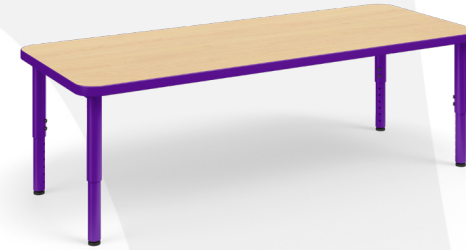
# Childcare Classroom 1's



## COLLABORATION



**Lakeshore - Heavy Duty Stacking Chairs**  
 Size: 9.5" (with arms)  
 All Stack 3 high  
 Qty: 12



**KI - Ruckus Rectangle Table**  
 Size: 24" x 60" x 12"-19" H  
 Qty: 2



**KI - Ruckus Horseshoe Shape Table**  
 Size: 60" x 66" x 12"-19" H  
 Qty: 2



**VS America PantoMove-LuPo**  
 Adjusts from 13.5" to 18" H  
 Qty: 2

## PLAY AREA



**Whitney Brothers Contemporary Kitchen Combo**  
 Size: 48.25"W x 14.75"D x 39.25"H  
 Qty: 1 in Each Classroom



**Jonti-Craft Traditional Doll Bed**  
 Size: 12.5" W x 20.5" D x 9" H  
 Qty: 1 in Each Classroom



**Whitney Brothers Market Stand**  
 Size: 33" W x 16.75" D x 48" H  
 Qty: 1 Total for Childcare 1-2



**Jonti-Craft Dress-Up Center with Bins**  
 Size: 38.5" H x 48" W x 23" D  
 Qty: 1 Total for Childcare 1-2

## COTS



**Lakeshore Heavy-Duty Easy Stack Cot**  
 Size: 51 3/4" w x 21 1/2" d x 4 1/4" h  
 Sleeping area: 48 1/2" x 19"  
 Stacks 20 high on cart  
 Qty: 12

## CHANGING TABLE



**Jonti-Craft - Diaper Changer with Stairs**  
 Cubbies behind closed doors  
 Size: 38.5" H x 48.5" W x 23.5" D  
 Stair Width: 14-5/8"  
 Qty: 1

## CALMING CORNER



**Lakeshore Flex-Space Lounge & Learn Couch**  
 Size: 35" w x 21" d x 25" h, 14" seat height  
 Qty: 1



**Lakeshore Calming Colors Beanbag**  
 Color: Green  
 Size: 30" w x 21" h  
 Qty: 1

## READING AND WRITING



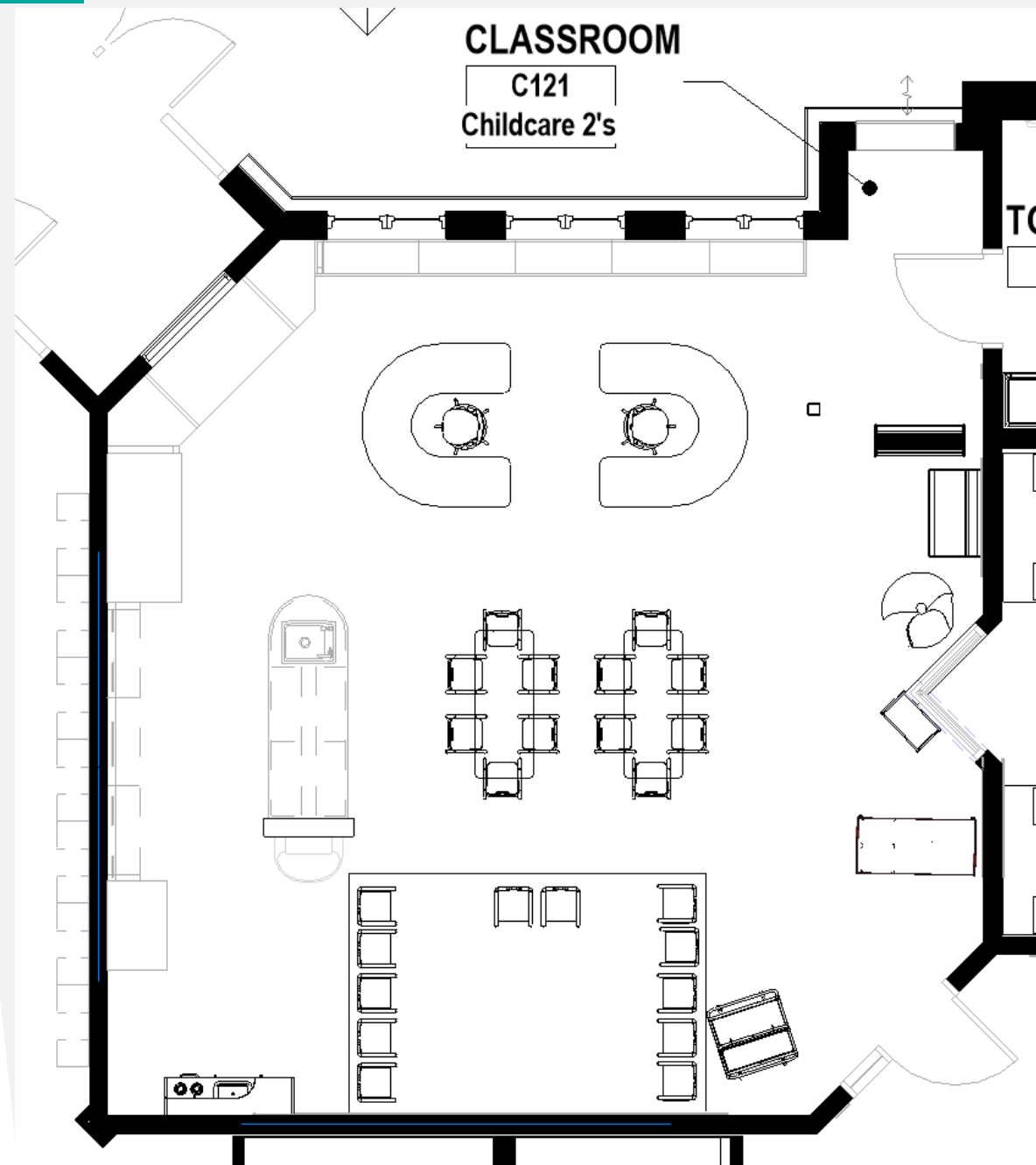
**Lakeshore All-Purpose Teaching Easel**  
 Whiteboard and felt board  
 Size: 30" W x 52" H  
 Qty: 1



**Jonti-Craft Flush back Wide Pick-a-Book Stand**  
 Size: 27.5" H x 36" W x 13.5" D  
 Qty: 1



# Childcare Classroom 2's



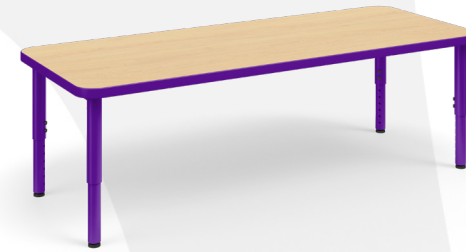
## COLLABORATION



**Lakeshore - Heavy Duty Stacking Chairs**  
Size: 11.5" (without arms)  
All Stack 3 high  
Qty: 12



**Lakeshore 3 in 1 Cube Chair**  
Chair turns over to become a 6" seat, a 9 1/2" seat or a 15 1/2" table  
Qty: 12



**KI - Ruckus Rectangle Table**  
Size: 24" x 60" x 20-33" H  
Qty: 2



**KI - Ruckus Horseshoe Shape Table**  
Size: 60" x 66" x 20-33" H  
Qty: 2



**VS America PantoMove-LuPo**  
Adjusts from 13.5" to 18" H  
Qty: 2

## PLAY AREA



**Whitney Brothers Contemporary Kitchen Combo**  
Size: 48.25"W x 14.75"D x 39.25"H  
Qty: 1 in Each Classroom



**Jonti-Craft Traditional Doll Bed**  
Size: 12.5" W x 20.5" D x 9" H  
Qty: 1 in Each Classroom



**Whitney Brothers Market Stand**  
Size: 33" W x 16.75" D x 48" H  
Qty: 1 Total for Childcare 1-2



**Jonti-Craft Dress-Up Center with Bins**  
Size: 38.5" H x 48" W x 23" D  
Qty: 1 Total for Childcare 1-2

## COTS



**Lakeshore Heavy-Duty Easy Stack Cot**  
Size: 51 3/4" w x 21 1/2" d x 4 1/4" h  
Sleeping area: 48 1/2" x 19"  
Stacks 20 high on cart  
Qty: 12

## CHANGING TABLE



**Jonti-Craft - Diaper Changer with Stairs**  
Cubbies behind closed doors  
Size: 38.5" H x 48.5" W x 23.5" D  
Stair Width: 14-5/8"  
Qty: 1

## CALMING CORNER



**Lakeshore Flex-Space Lounge & Learn Couch**  
Size: 35" w x 21" d x 25" h, 14" seat height  
Qty: 1



**Lakeshore Calming Colors Beanbag**  
Color: Green  
Size: 30" w x 21" h  
Qty: 1

## READING AND WRITING



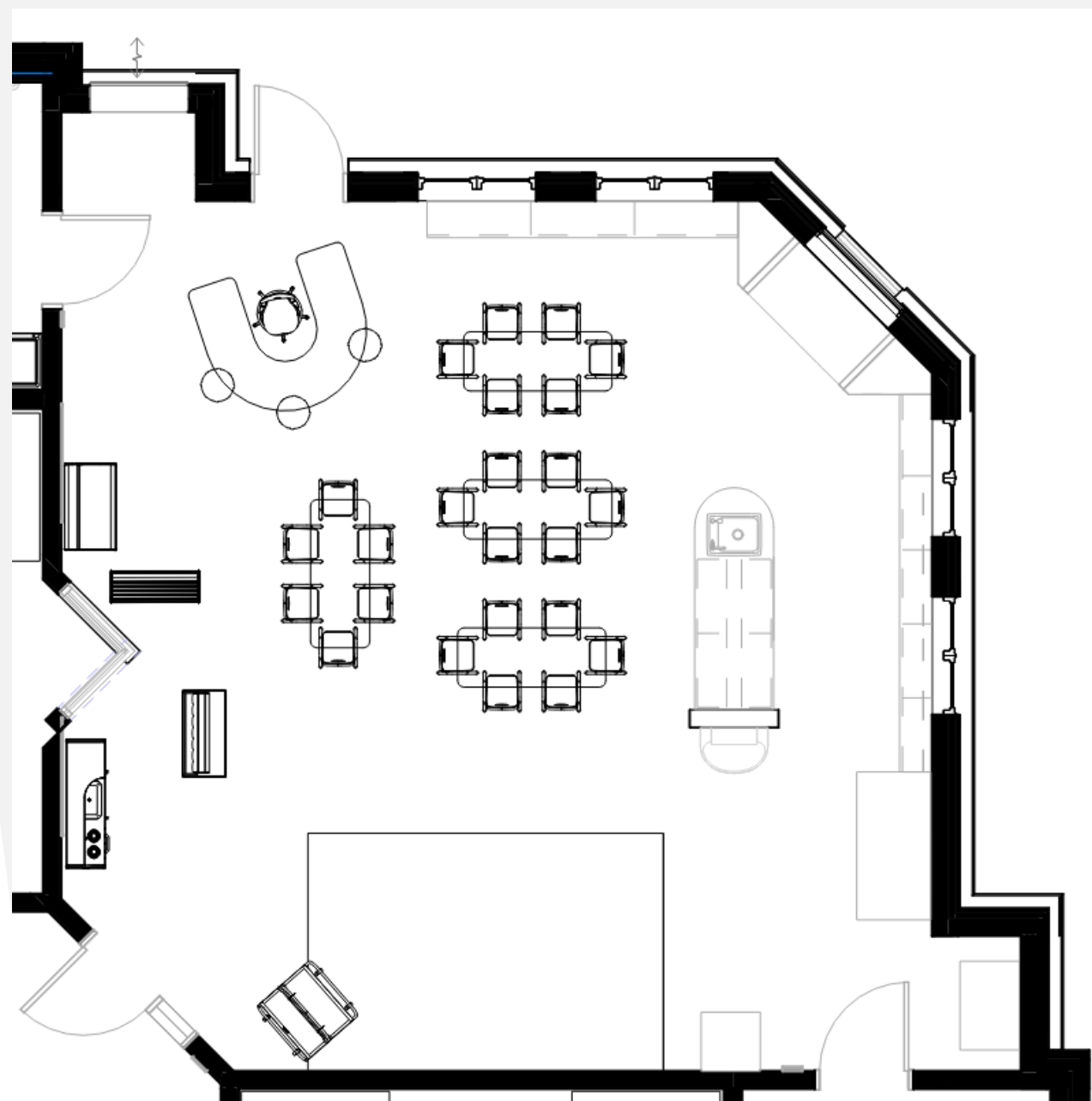
**Lakeshore All-Purpose Teaching Easel**  
Whiteboard and felt board  
Size: 30" W x 52" H  
Qty: 1



**Jonti-Craft Flush back Wide Pick-a-Book Stand**  
Size: 27.5" H x 36" W x 13.5" D  
Qty: 1



# Childcare Classroom 3-5



## COLLABORATION



**Lakeshore - Heavy Duty Stacking Chairs**  
Size: 13.5" (without arms)  
All Stack 3 high  
Qty: 24



**KI - Ruckus Rectangle Table**  
Size: 24" x 60" x 20-33" H  
Qty: 4



**KI - Ruckus Horseshoe Shape Table**  
Size: 60" x 66" x 20-33" H  
Qty: 1



**Lakeshore Flex-Space Student Lap Desk**  
Size: 18" W x 12" D x 11" H  
Qty: 1



**Lakeshore Flex-Space Comfy Floor Seat**  
Seat: 22" wide  
Qty: 1



**VS America Hokki Stool**  
Size: 12 1/4" H x 13" D  
Qty: 3



**VS America PantoMove-LuPo**  
Adjusts from 13.5" to 18" H  
Qty: 1

## PLAY AREA



**Whitney Brothers Contemporary Kitchen Combo**  
Size: 48.25"W x 14.75"D x 39.25"H  
Qty: 1 in Each Classroom



**Jonti-Craft Traditional Doll Bed**  
Size: 12.5" W x 20.5" D x 9" H  
Qty: 1 in Each Classroom



**Whitney Brothers Market Stand**  
Size: 33" W x 16.75" D x 48" H  
Qty: 2 Total for Childcare 3-5



**Jonti-Craft Dress-Up Center with Bins**  
Size: 38.5" H x 48" W x 23" D  
Qty: 1 Total for Childcare 3-5

## COTS



**Lakeshore Heavy-Duty Easy Stack Cot**  
Size: 51 3/4" w x 21 1/2" d x 4 1/4" h  
Sleeping area: 48 1/2" x 19"  
Stacks 20 high on cart  
Qty: 12

## CHANGING TABLE



**Jonti-Craft - Diaper Changer with Stairs**  
Cubbies behind closed doors  
Size: 38.5" H x 48.5" W x 23.5" D  
Stair Width: 14-5/8"  
Qty: 1

## CALMING CORNER



**Lakeshore Flex-Space Lounge & Learn Couch**  
Size: 35" w x 21" d x 25" h, 14" seat height  
Qty: 1



**Lakeshore Calming Colors Beanbag**  
Color: Green  
Size: 30" w x 21" h  
Qty: 1

## READING AND WRITING



**Lakeshore All-Purpose Teaching Easel**  
Whiteboard and felt board  
Size: 30" W x 52" H  
Qty: 1



**Jonti-Craft Flush back Wide Pick-a-Book Stand**  
Size: 27.5" H x 36" W x 13.5" D  
Qty: 1







# GSRP Classrooms Rendering





# GSRP Classrooms Rendering





# GSRP Classroom

## COLLABORATION



**Lakeshore - Kids Color Stacking Chairs**  
 Size: 13.5" (without arms)  
 All Stack 3 high  
 Qty: 16



**KI - Ruckus Rectangle Table**  
 Size: 24" x 60" x 20-33" H  
 Qty: 3



**KI - Ruckus Horseshoe Shape Table**  
 Size: 60" x 66" x 20-33" H  
 Qty: 2



**Lakeshore Flex-Space Student Lap Desk**  
 Size: 18" W x 12" D x 11" H  
 Qty: 2



**Lakeshore Flex-Space Comfy Floor Seat**  
 Seat: 22" wide  
 Qty: 2



**VS America PantoMove-LuPo**  
 Adjusts from 13.5" to 18" H  
 Qty: 2

## PLAY AREA



**Whitney Brothers Contemporary Kitchen Combo**  
 Size: 48.25"W x 14.75"D x 39.25"H  
 Qty: 1 in Each Classroom



**Jonti-Craft Traditional Doll Bed**  
 Size: 12.5" W x 20.5" D x 9" H  
 Qty: 1 in Each Classroom



**Whitney Brothers Market Stand**  
 Size: 33" W x 16.75" D x 48" H  
 Qty: 3 Total for GSRP



**Jonti-Craft Dress-Up Center with Bins**  
 Size: 38.5" H x 48" W x 23" D  
 Qty: 3 Total for GSRP

## COTS



**Lakeshore Heavy-Duty Easy Stack Cot**  
 Size: 51 3/4" w x 21 1/2" d x 4 1/4" h  
 Sleeping area: 48 1/2" x 19"  
 Stacks 20 high on cart  
 Qty: 16

## CALMING CORNER



**Lakeshore Flex-Space Lounge & Learn Couch**  
 Size: 35" w x 21" d x 25" h, 14" seat height  
 Qty: 1



**Lakeshore Calming Colors Beanbag**  
 Color: Green  
 Size: 30" w x 21" h  
 Qty: 1

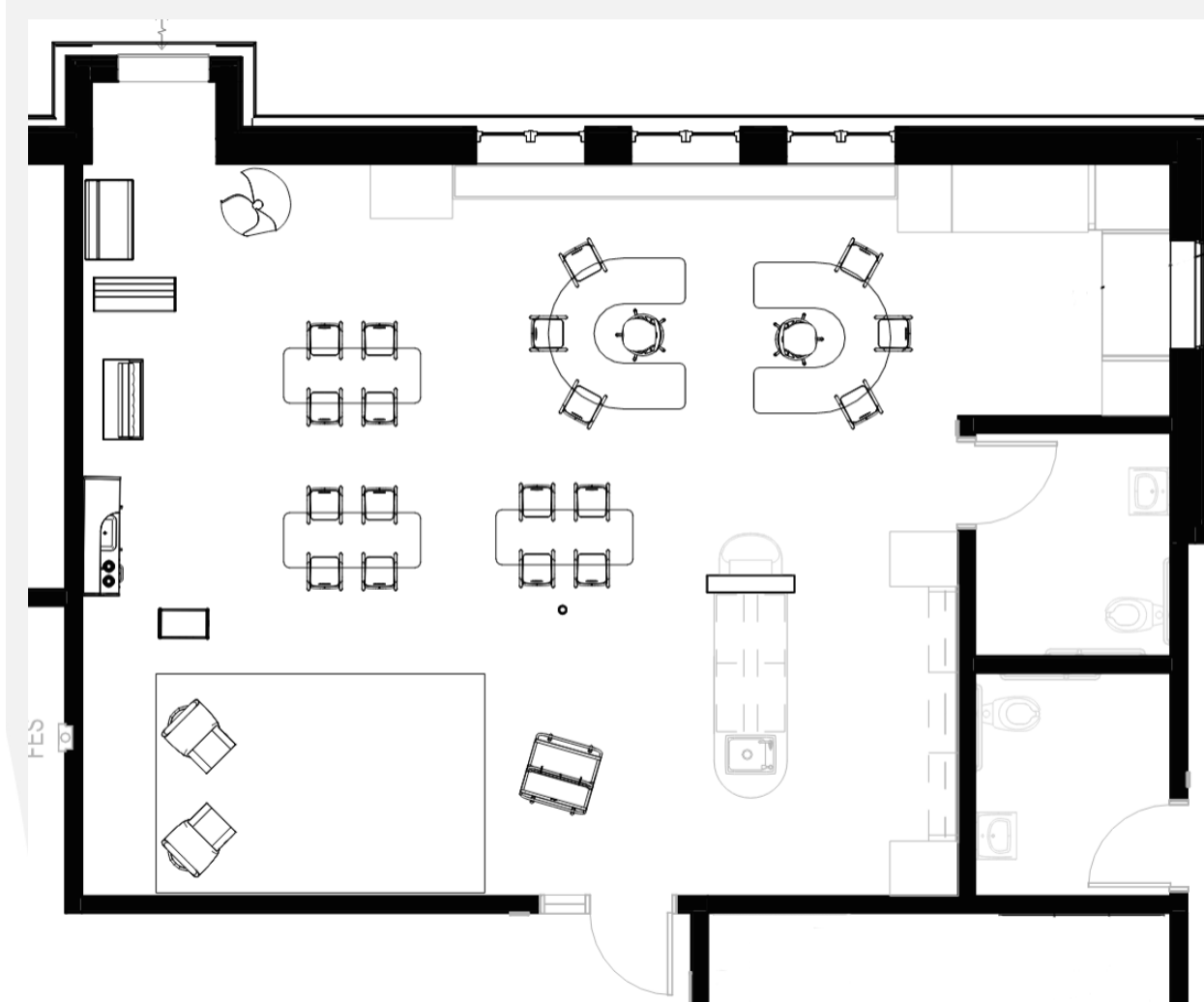
## READING AND WRITING



**Lakeshore All-Purpose Teaching Easel**  
 Whiteboard and felt board  
 Size: 30" W x 52" H  
 Qty: 1

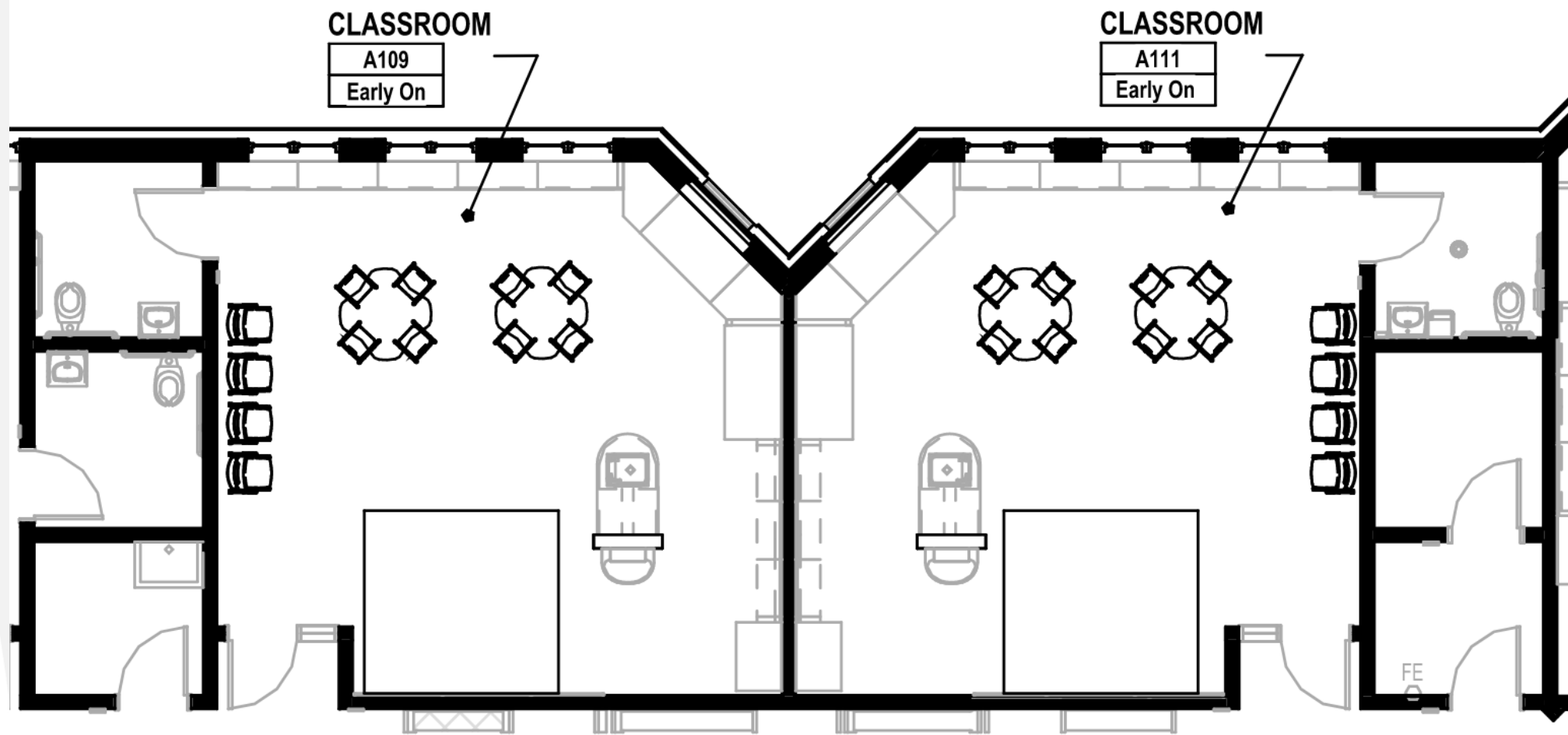


**Jonti-Craft Flush back Wide Pick-a-Book Stand**  
 Size: 27.5" H x 36" W x 13.5" D  
 Qty: 1





# Early On Classroom



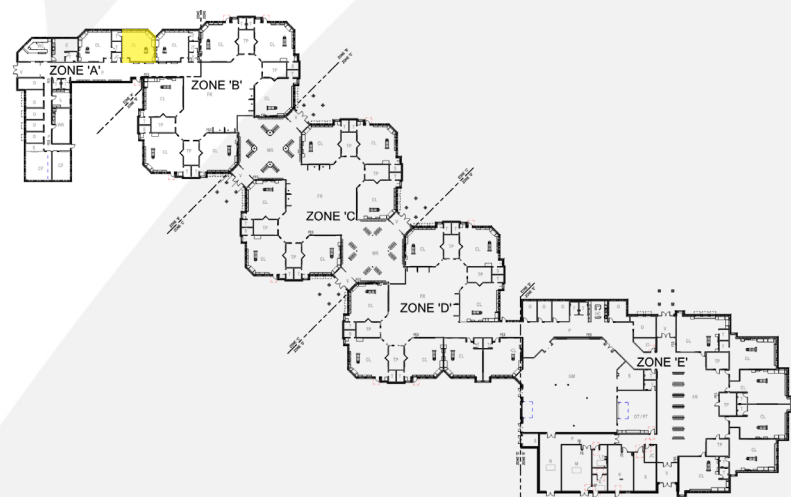
**KI - Clover Table**  
Size: 48" x 48" x 12-19" H  
Qty: 2




**Lakeshore - Heavy Duty Stacking Chairs**  
Size: 9.5" (with arms)  
All Stack 3 high  
Qty: 8



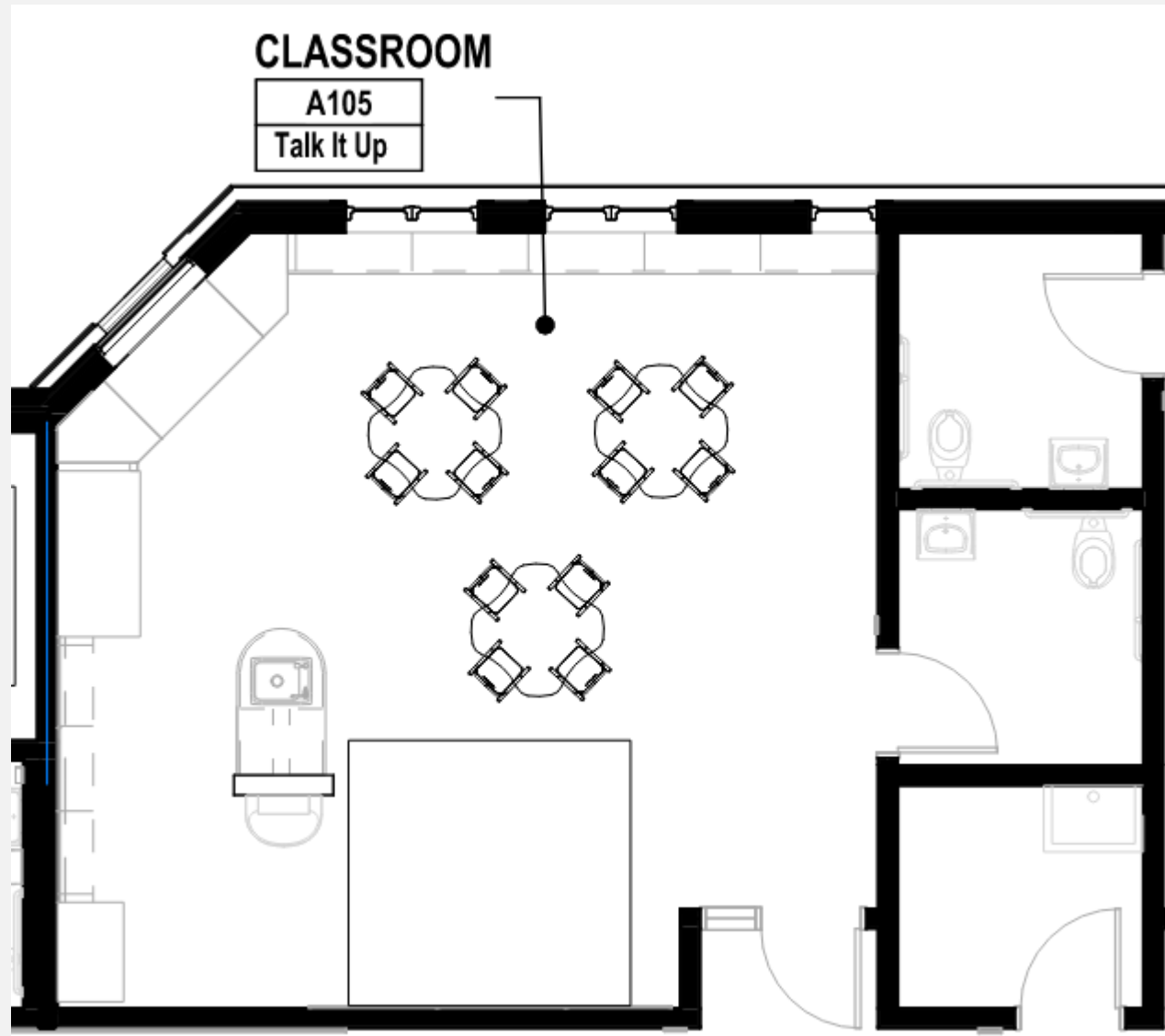
**Allsteel Relate 4-Leg Chair**  
with Casters, Upholstered Seat and Mesh Back  
Qty: 4



 **Reminder**  
Existing furniture planned to supplement this space.



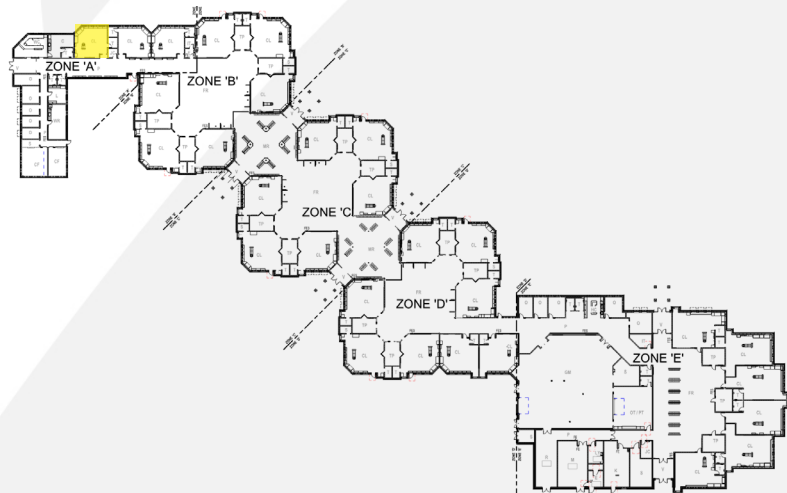
# Talk It Up Classroom



**KI - Clover Table**  
Size: 48" x 48" x 20-33" H  
Qty: 3

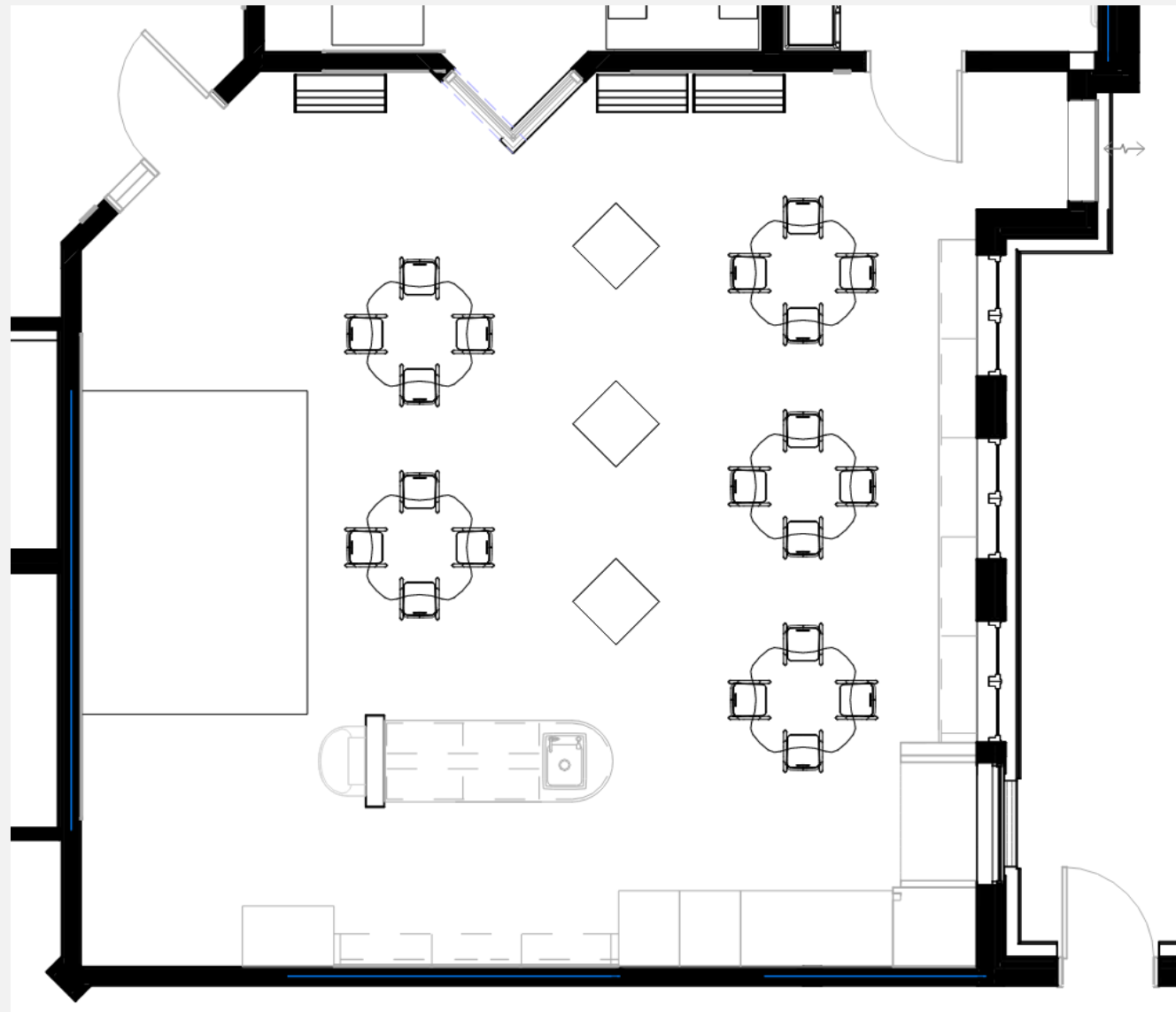


**Lakeshore - Heavy Duty Stacking Chairs**  
Size: 13.5" (without arms)  
All Stack 3 high  
Qty: 12





# Library



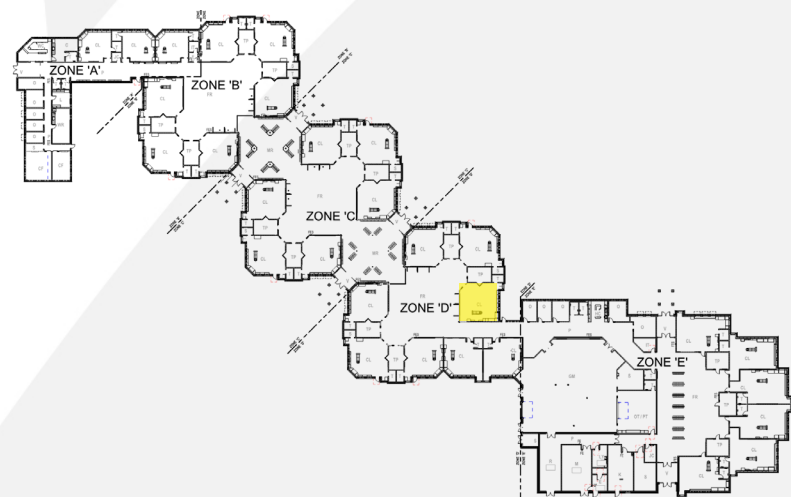
**KI - Clover Table**  
Size: 48" x 48" x 20"-33" H  
Qty: 5



**Lakeshore - Heavy Duty Stacking Chairs**  
Size: 13.5" (without arms)  
All Stack 3 high  
Qty: 20



**Jonti-Craft**  
**Flush back Wide Pick-a-Book Stand**  
Size: 27.5" H x 36" W x 13.5" D  
Qty: 3

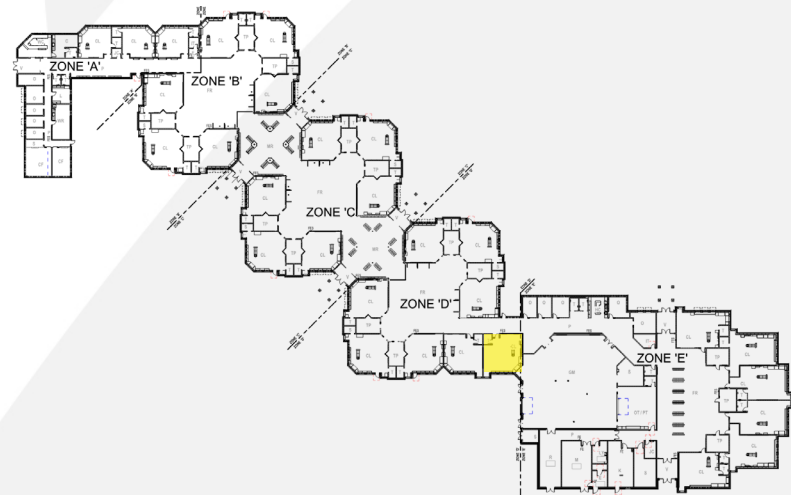
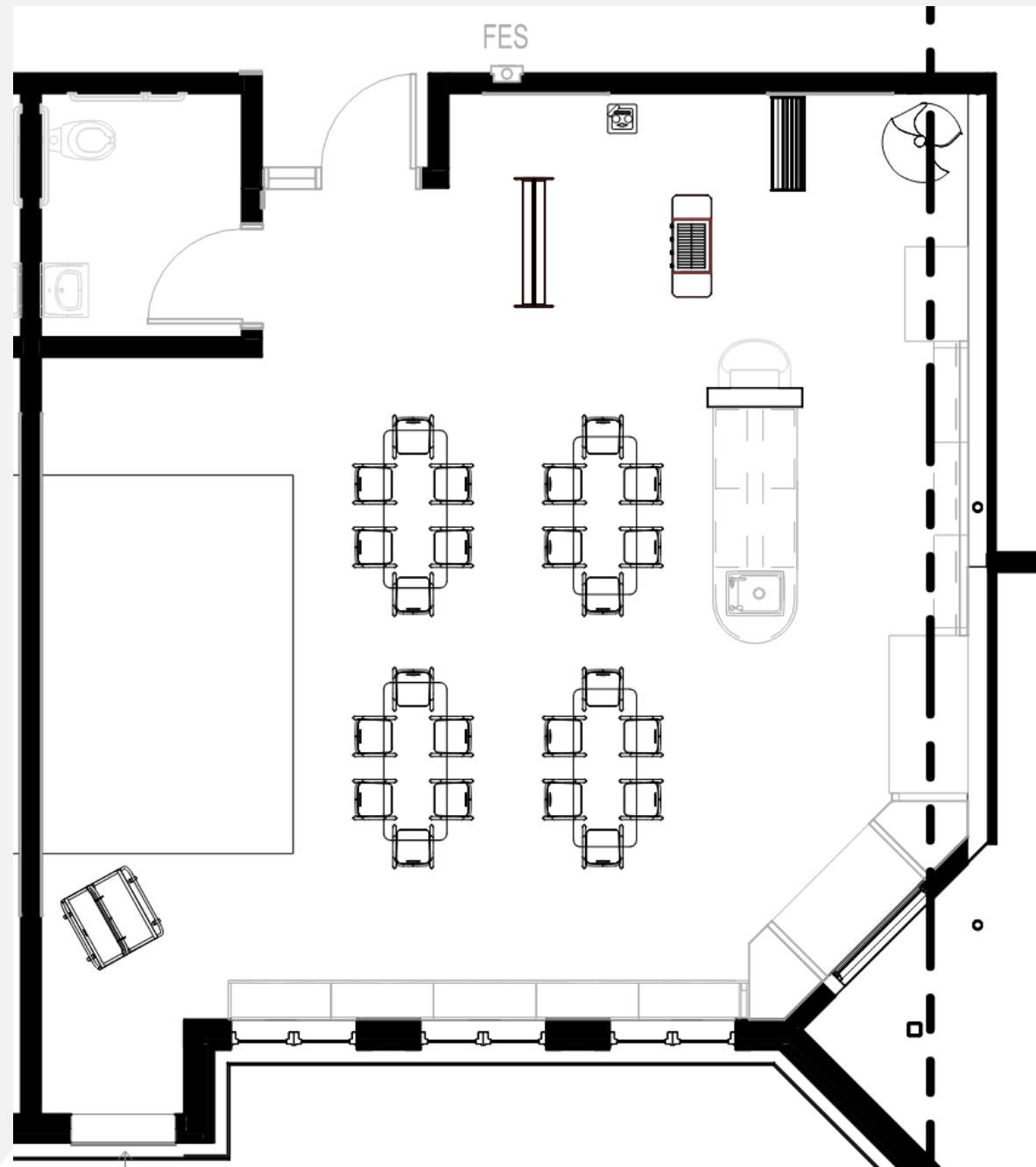


## Reminder

Existing furniture planned to supplement this space.



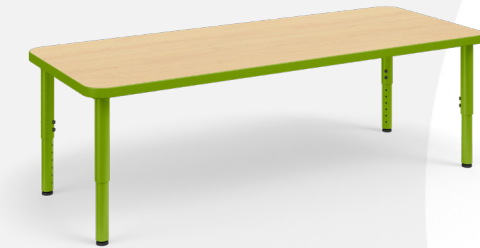
# Enrichment Room



## COLLABORATION



**Lakeshore - Heavy Duty Stacking Chairs**  
 Size: 13.5" (without arms)  
 All Stack 3 high  
 Qty: 20



**KI - Ruckus Rectangle Table**  
 Size: 24" x 60" x 20"-33" H  
 Qty: 4

## PLAY AREA



**Whitney Brothers Contemporary Washer / Dryer - White**  
 Size: 19"W x 15"D x 35"H



**Jonti-Craft TrueModern Play BBQ Grill**  
 Size: 31" H x 39" W x 15" D



**Jonti-Craft Housecleaning Set**  
 Size: 29" H x 11" W x 11" D



**Jonti-Craft Imagination Station**  
 Size: 49" H x 49.5" W x 15" D

## READING AND WRITING



**Lakeshore All-Purpose Teaching Easel**  
 Whiteboard and felt board  
 Size: 30"W x 52" H  
 Qty: 1



**Jonti-Craft Flush back Wide Pick-a-Book Stand**  
 Size: 27.5" H x 36" W x 13.5" D  
 Qty: 1

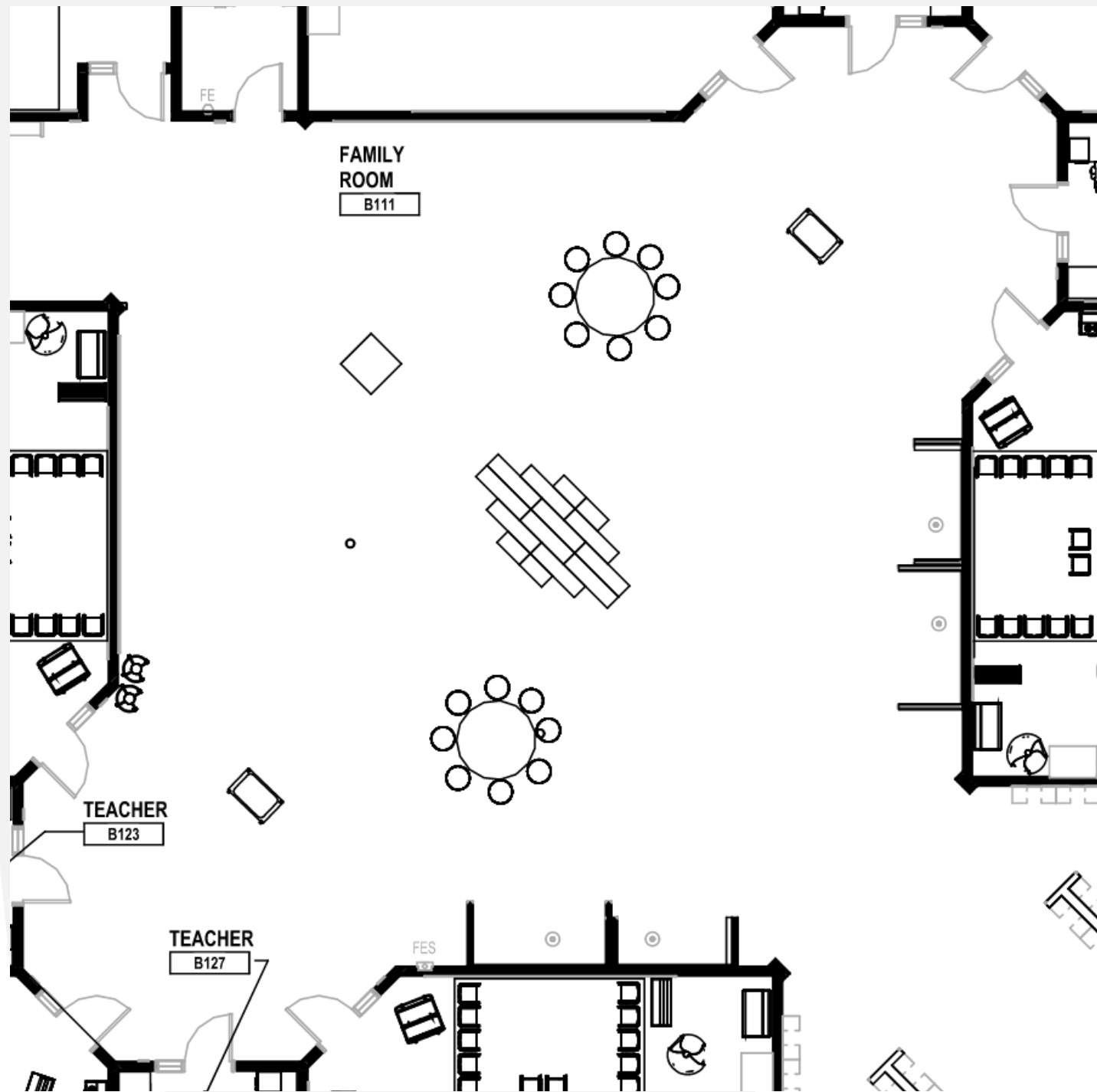
## CALMING CORNER



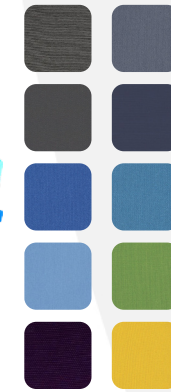
**Lakeshore Calming Colors Beanbag**  
 Colors: Green  
 Size: 30" w x 21" h  
 Qty: 1



# Family Rooms - Typical



**Norva Nivel  
Genga Maxi Collection**  
(10) Genga Large 47" x 12" x 6" H  
(4) Genga Small 24" x 12" x 6" H



**KI - Ruckus Round Table**  
Size: 60" Dia. x 12"-15" Height Adjustable  
Qty: 2



**Fomcore  
Lily Pads with Cart**  
10 cushions per cart  
Qty: 20 Pads, 2 Carts



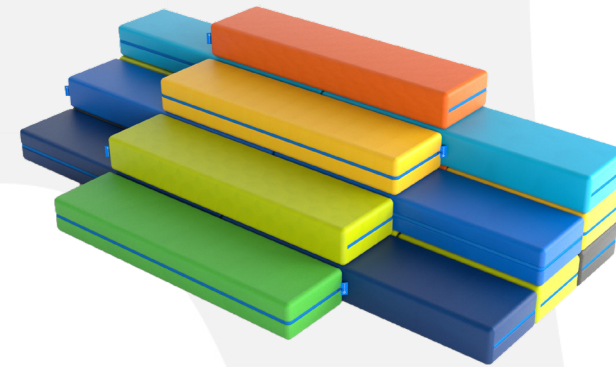
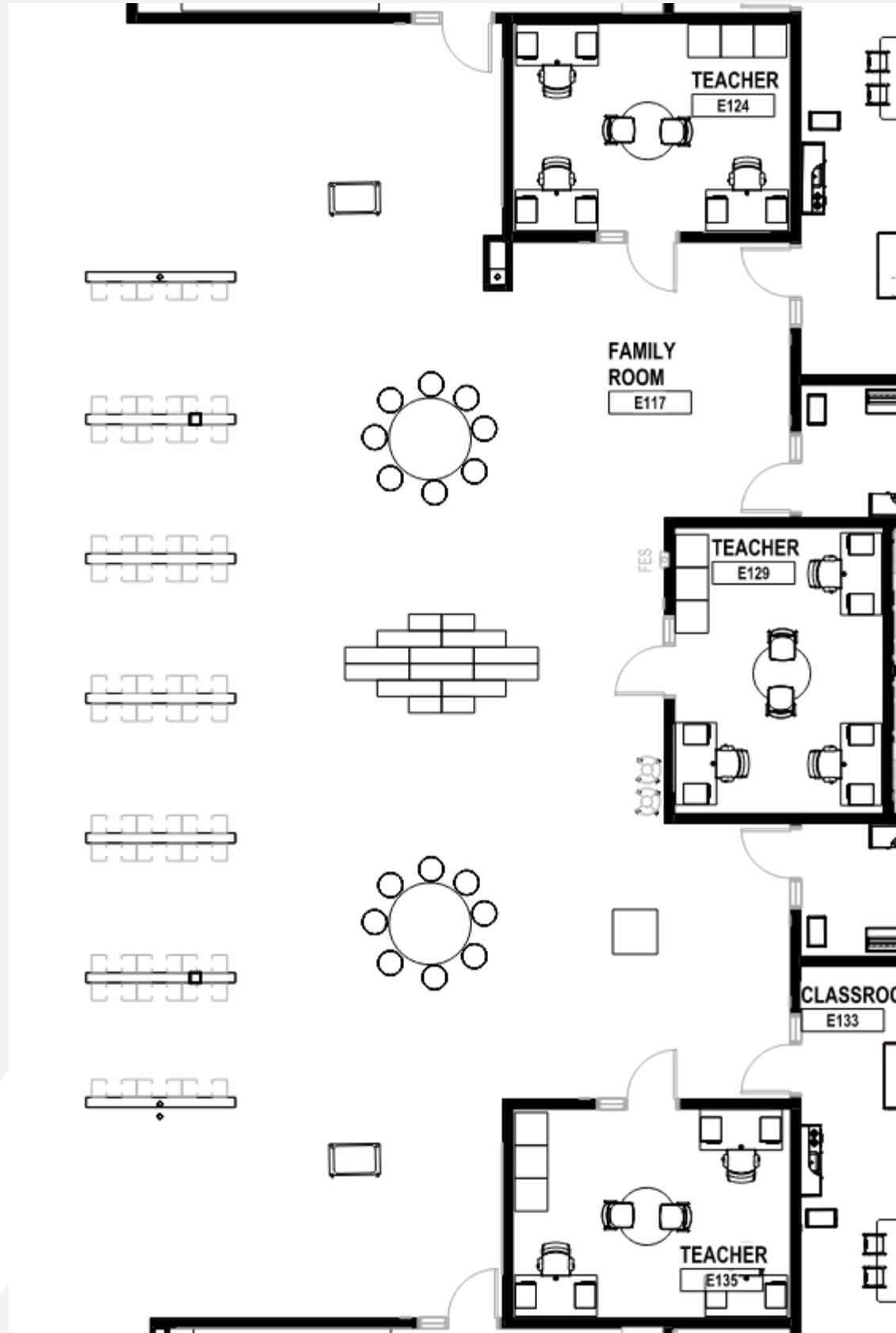
**Jonti-Craft  
See-Thru Sensory Table**  
Size: 24" H x 37.5" W x 23" D  
Qty: 2 per Family Room



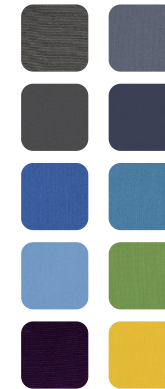
**Whitney Brothers  
Big Wide Discovery Table**  
Size: 31" W x 31.50" D x 20" H  
Qty: 1



# Family Rooms - GSRP



**Norva Nivel  
Genga Maxi Collection**  
(10) Genga Large 47" x 12" x 6" H  
(4) Genga Small 24" x 12" x 6" H



**KI - Ruckus Round Table**  
Size: 60" Dia. x 12"-15" Height Adjustable  
Qty: 2



**Fomcore  
Lily Pads with Cart**  
10 cushions per cart  
Size:  
Qty: 20 Pads, 2 Carts



**Jonti-Craft  
See-Thru Sensory Table**  
Size: 24" H x 37.5" W x 23" D  
Toddler Size: 19.5" H x 37.5" W x 23" D  
Qty: 2 per Family Room



**Gressco  
Maker Space Low Construction Table**  
Size: 20 3/4" H x 32 1/2" W x 32 1/4" D  
Qty: 1



# Interactive Sand Table - Family Room



Projector rotates to transition between sand and floor activities.



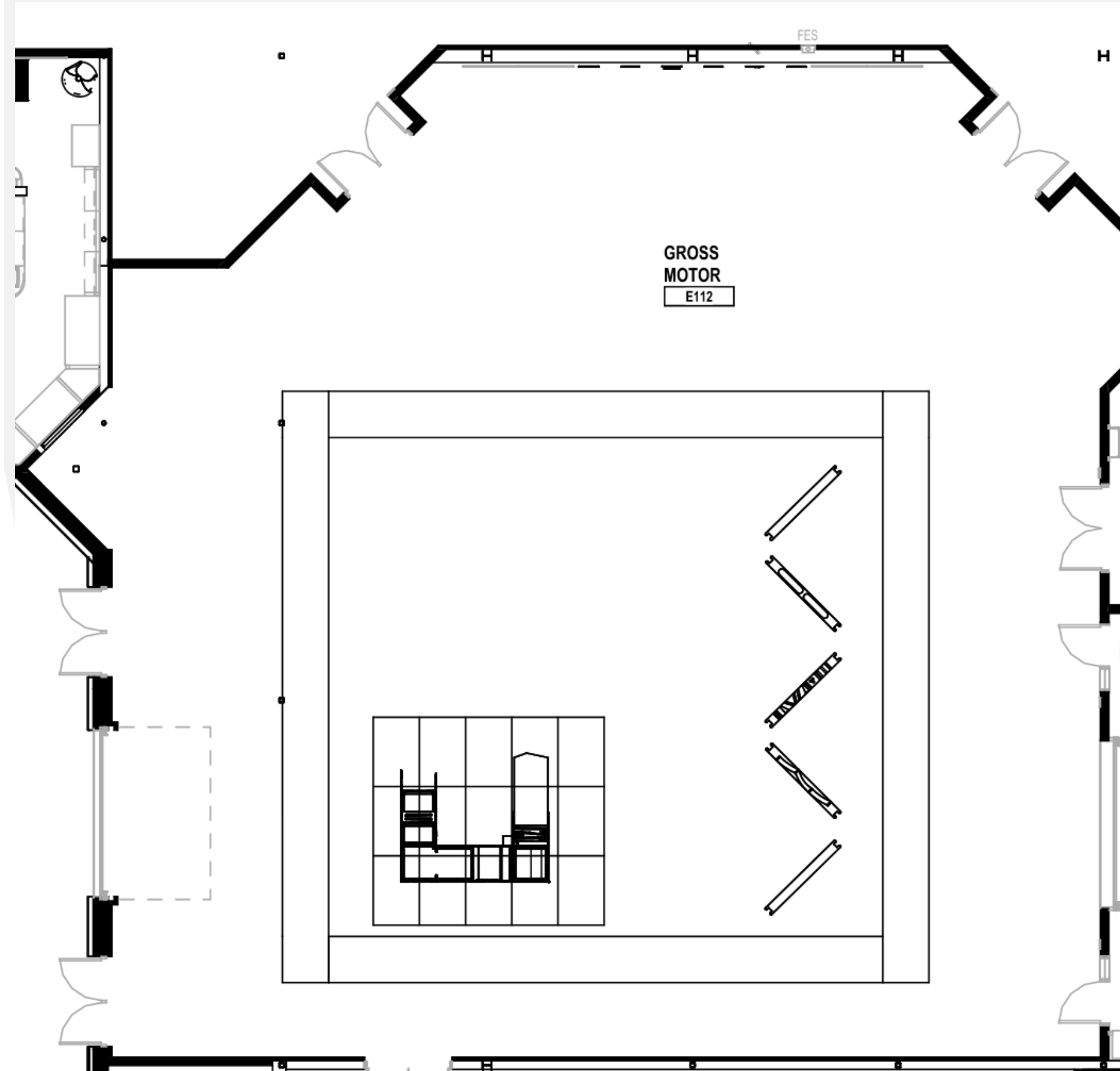
## Kaplan

- Transforms any wall, table, or floor into an interactive learning space
- Projector rotates to transition between sand and floor activities
- Includes 10 sand activities and 50 floor activities
- Ships in seven boxes: Obie Floor Projector, table structure, five 25-pound boxes of nontoxic play sand
- Some assembly required
- Size: 51" L x 31" W x 79" H

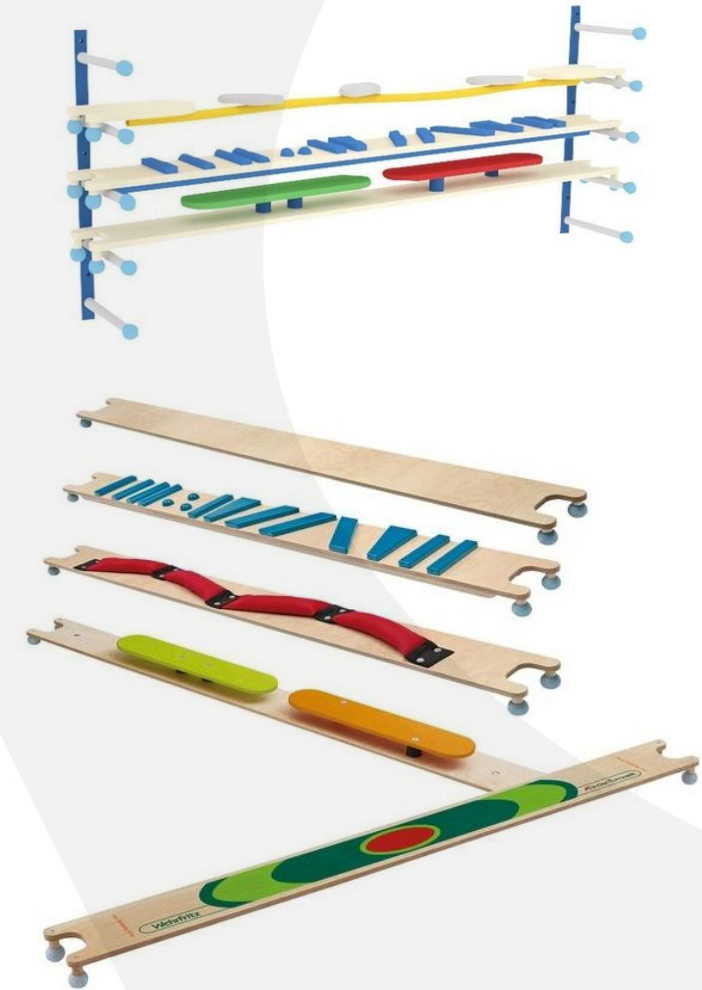




# Gross Motor



**Gressco**  
**HABA Pro Grow.up Owl's Nest Loft**  
Size: 128" x 111"  
Qty: 1



**Gressco**  
**Balancing Boards with Wall Rack**  
Size: 7ft Long  
Qty: 1 Set of 5 Boards

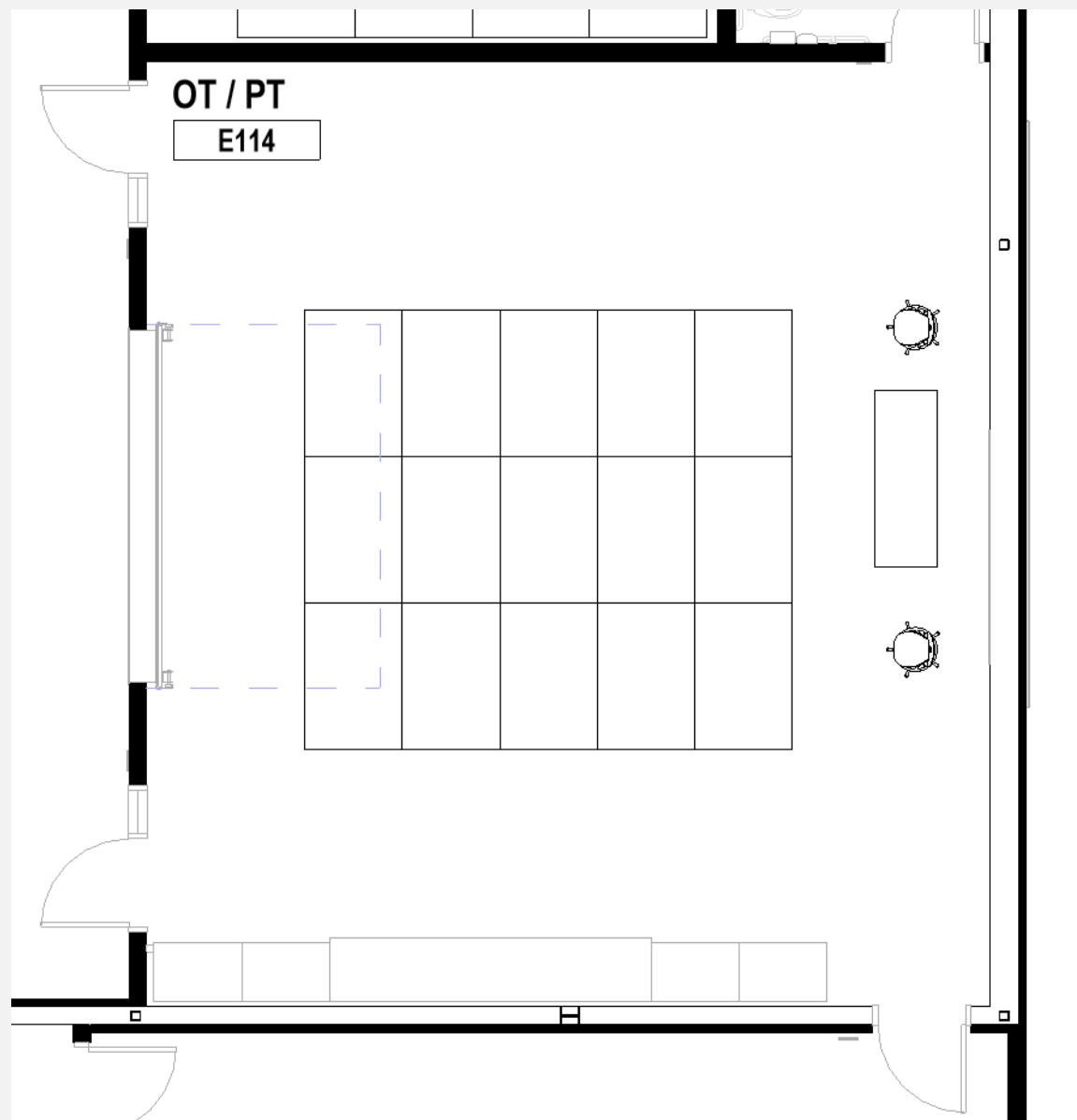


**Gressco**  
Safety Fall Protection Mats by HABA  
Stable mat base w/firmly bonded foam core  
Non-slip, flame-retardant synthetic leather  
Size: 40" x 60" x 21 lb/m2 (Standard Weight)  
Qty: Shown 15, Priced for 30

 **Reminder**  
Existing furniture planned to supplement this space.



# OT/PT



**School Health, Option 1**  
Biltmore Recovery Couch XL with Wood Legs  
Adjustable 12-position headrest, fingertip control and positive locking device  
Size: 76" L x 29" W x 20" H  
Qty: 1



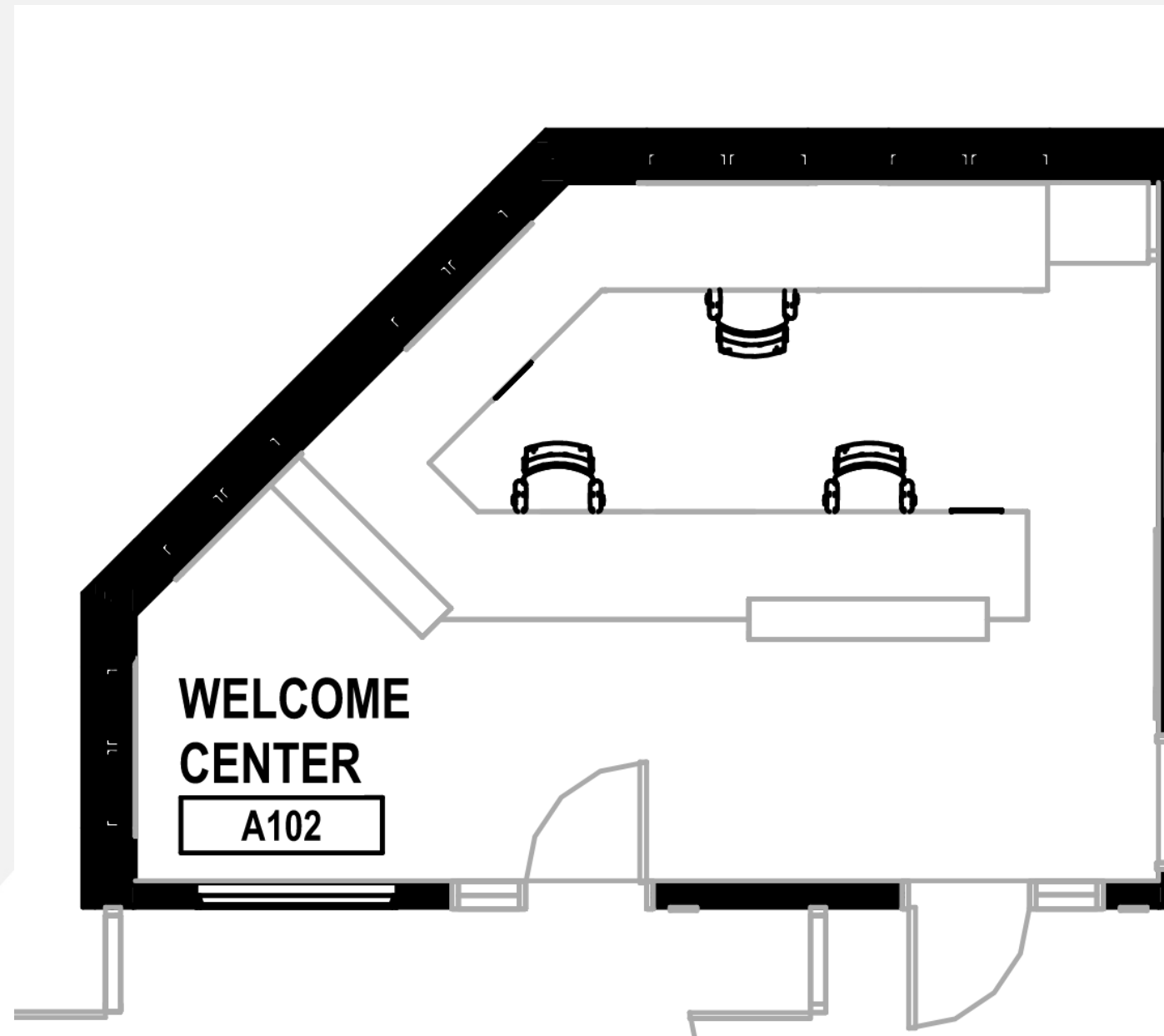
**VS America**  
**PantoMove-LuPo**  
Adjusts from 13.5" to 18" H  
Qty: 2



**Gressco**  
Safety Fall Protection Mats by HABA  
Stable mat base w/firmly bonded foam core  
Non-slip, flame-retardant synthetic leather  
Size: 40" x 60" x 21 lb/m2 (Standard Weight)  
Qty: Shown 15



# Welcome Center



**HON  
Ignition Task Chair**  
Advanced Synchro-tilt with height and width  
adjustable arms and adjustable lumbar support  
Qty: 3



## Reminder

Metal storage cabinets included in construction package.



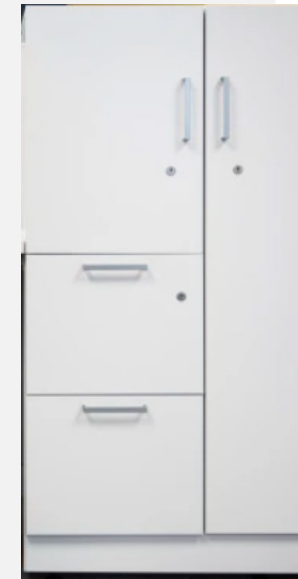
# Staff Offices



**Allsteel - Staff Desk**  
 30" x 60" Fixed Desk with Center Drawer,  
 Full End Panels & Modesty Panel  
 Includes Wire Management, (2) Grommets, &  
 (2) Mobile Pedestal Files (BBF) 15" W x 18" D



**HON Ignition Task Chair**  
 Advanced Synchro-tilt with height and width  
 adjustable arms and adjustable lumbar support



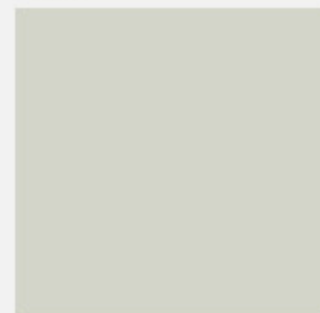
**Allsteel Personal Tower**  
 Size: 24" W x 24" D x 65"H  
 Metal case and front

LAMINATE  
WORKSURFACE:



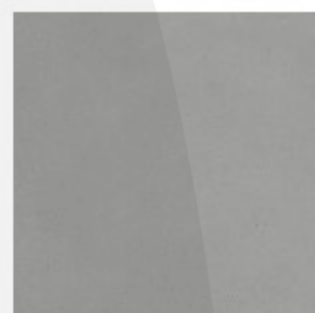
SILVER MESH

WORKSURFACE  
EDGE:



LOFT

PAINTED METAL  
STORAGE & SUPPORTS



PLATINUM METALLIC

PAINTED METAL  
(FRONT OF PEDESTAL ONLY):



FLINT

PAINTED METAL  
(CASE OF PEDESTAL ONLY):



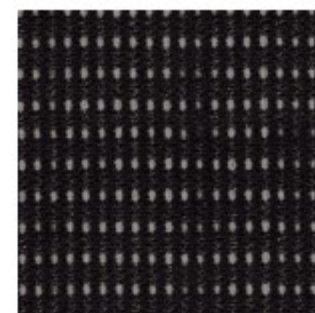
PLATINUM METALLIC

FRAME:



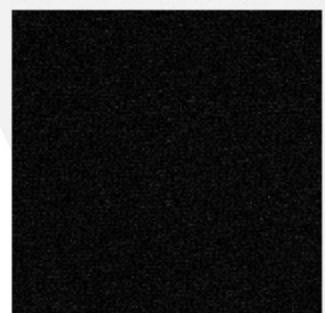
BLACK

MESH:



BLACK

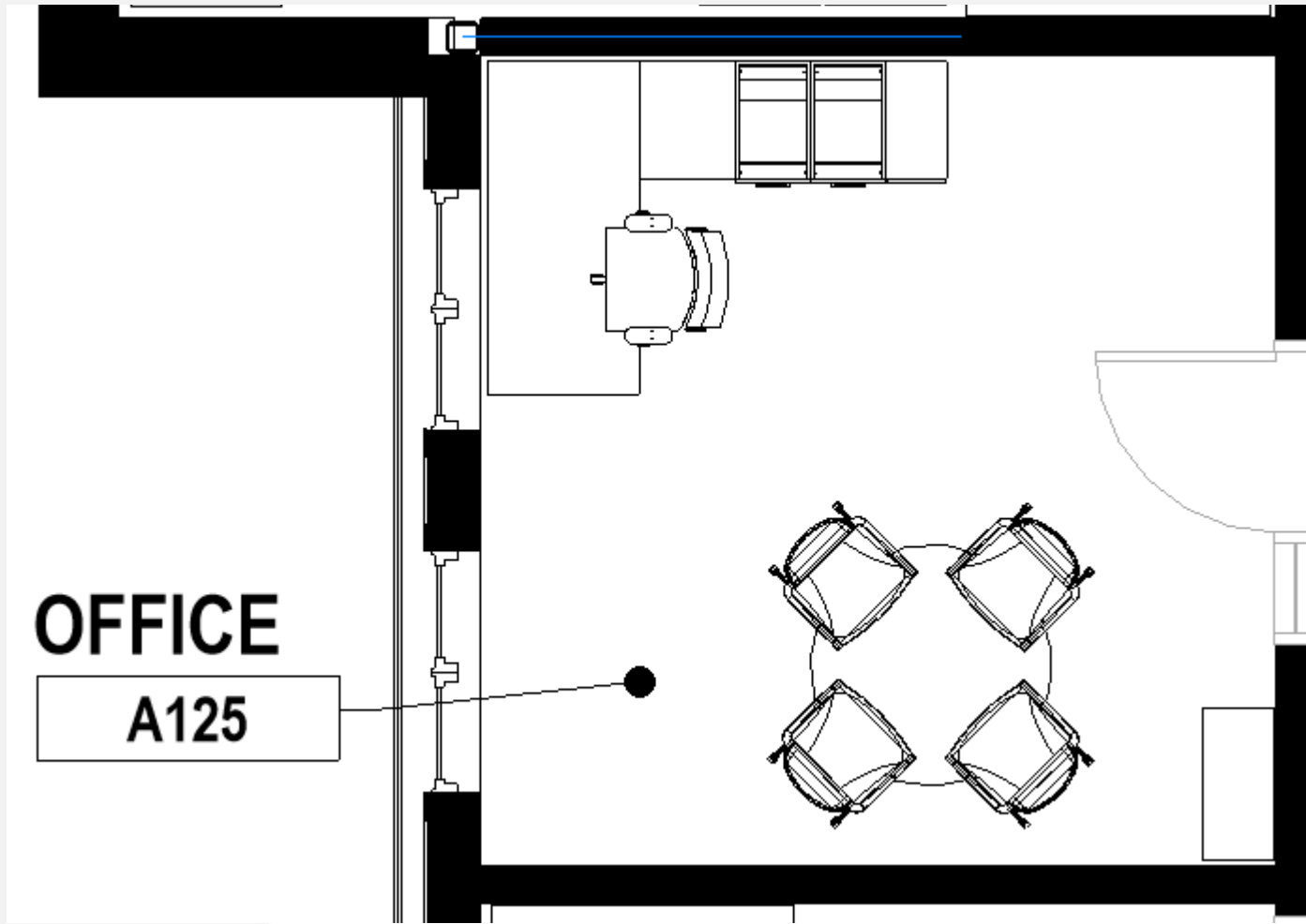
SEAT:



CENTURION, BLACK



# Principal's Office



**HON Ignition Task Chair**  
Advanced Synchro-tilt with height and width adjustable arms and adjustable lumbar support  
Qty: 1



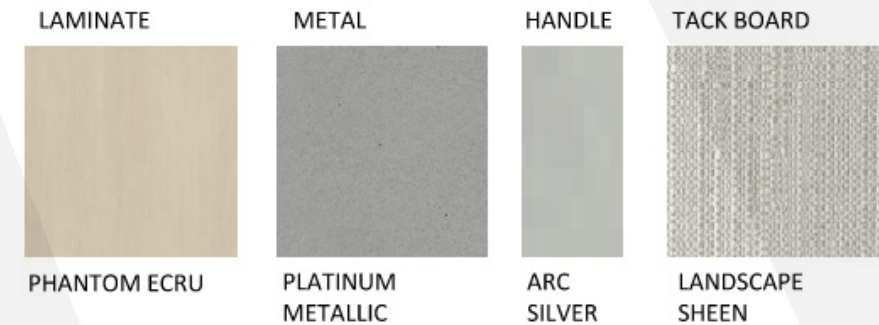
**Allsteel, Approach 5 High Laminate Bookcase**  
30"W x 14"D x 72"H  
Qty: 1

## Color Palette - A



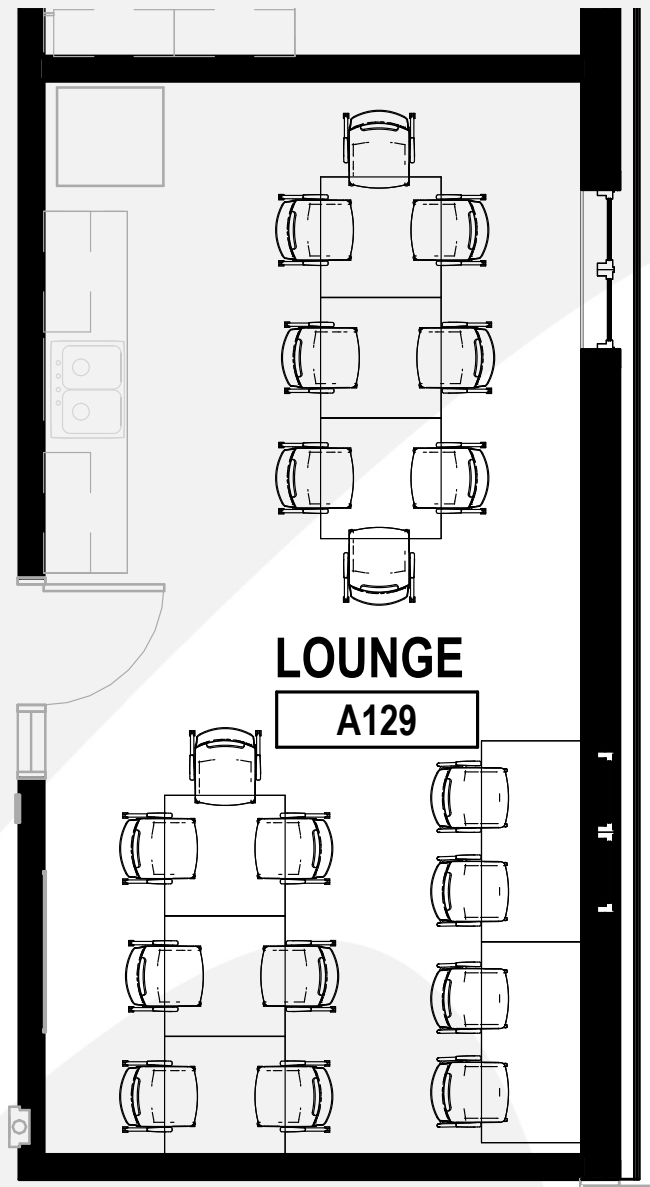
### Allsteel, Approach Desking System

66" x 91" Overall  
66" x 30" Height Adjustable Desk with Modesty Panel  
Fixed Box, Box, File Pedestal | File File Pedestal | Wardrobe  
Overhead Storage  
Tack Board | Under cabinet Lighting | Wire Management





# Teacher's Lounge



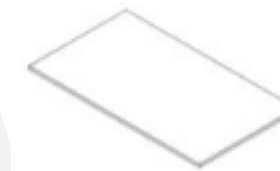
Allsteel,  
Structure Table, Square Top with  
X-Base with Casters  
36"W x 36"D x 28"H  
Qty: 6



HON,  
Motivate 4-Leg Chair  
Size: 18" Seat Height with Glides or Casters  
Qty: 15



Allsteel,  
Structure Table, Rectangle Top with  
X-Base  
30"W x 60"L x Counter Height  
Qty: 2

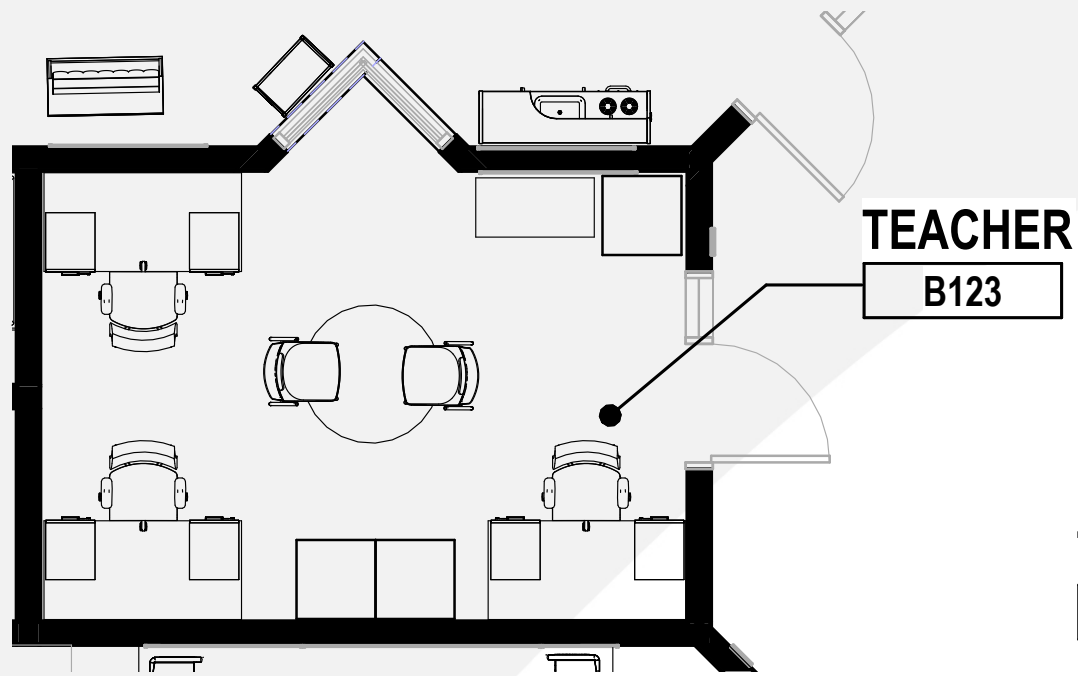


HON,  
Motivate 4-Leg Stool  
Size: Counter Height  
Qty: 4





# Teacher Prep Rooms



**Allsteel - Staff Desk**  
 30" x 60" Fixed Desk with Center Drawer,  
 Full End Panels & Modesty Panel  
 Includes Wire Management, (2) Grommets, &  
 (2) Mobile Pedestal Files (BBF) 15" W x 18" D



**HON Ignition Task Chair**  
 Advanced Synchro-tilt with height and width  
 adjustable arms and adjustable lumbar support



**Allsteel,  
 Structure Table, Round Top, X-Base**  
 Size: 36" Round  
 Qty: 1



**HON,  
 Motivate 4-Leg Chair**  
 Size: 18" Seat Height with Casters  
 Qty: 2



**Allsteel  
 Personal Tower**  
 Size: 24" W x 24" D x 65"H  
 Metal case and front

LAMINATE  
WORKSURFACE:



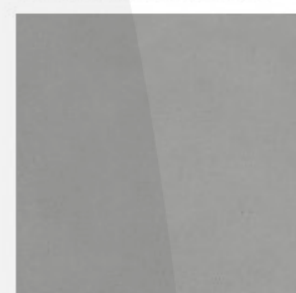
SILVER MESH

WORKSURFACE  
EDGE:



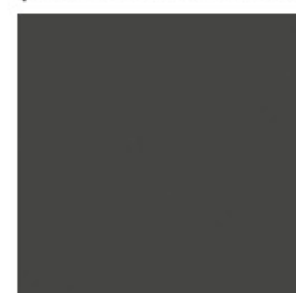
LOFT

PAINTED METAL  
STORAGE & SUPPORTS



PLATINUM METALLIC

PAINTED METAL  
(FRONT OF PEDESTAL ONLY):



FLINT

PAINTED METAL  
(CASE OF PEDESTAL ONLY):



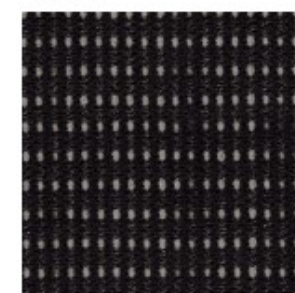
PLATINUM METALLIC

FRAME:



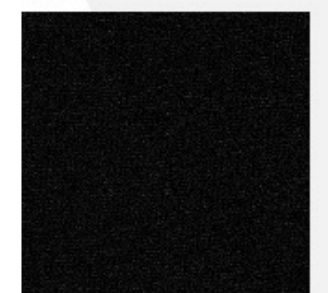
BLACK

MESH:



BLACK

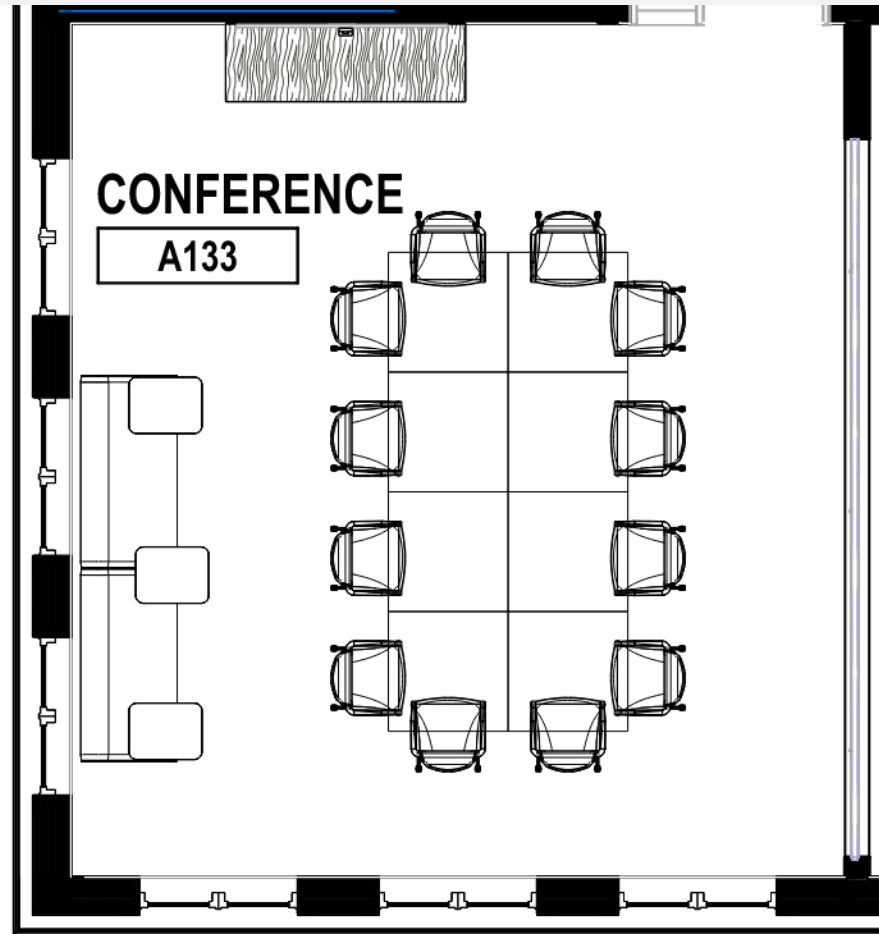
SEAT:



CENTURION, BLACK



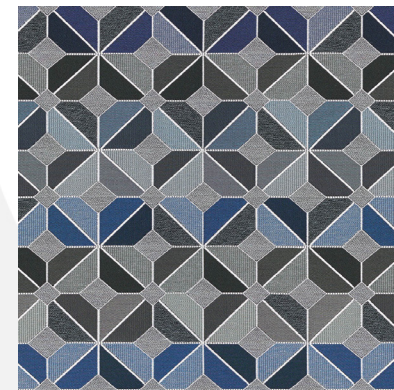
# Conference Room A133



Allsteel,  
Recharge Lounge with Laptop Table  
Size: 58" W x 18" Seat Height x 28" D  
Qty: 1



Lounge Seating, Seat Fabric:  
Designtex - Alphabet, Maritime  
Bleach Cleanable



Lounge Back Option 2  
Arc-Com Talavera, Ocean  
Bleach Cleanable Polyester



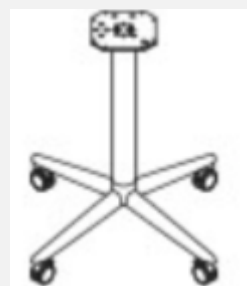
Allsteel,  
Align Footed Console with Laminate  
Top  
Size: 60" W x 22" H x 18" D  
Qty: 1



Allsteel,  
Relate 4-Leg Chair with Casters,  
Upholstered Seat and Mesh Back  
Qty: 12

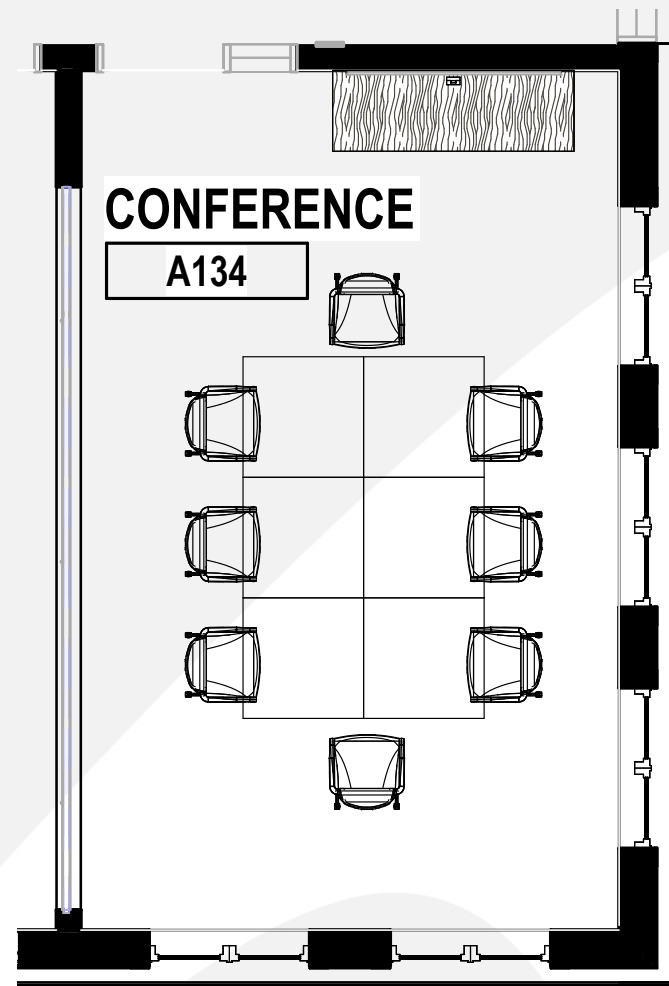


Allsteel,  
Structure Table, Square Top with  
X-Base with Casters  
36"W x 36"D x 28"H  
Qty: 6





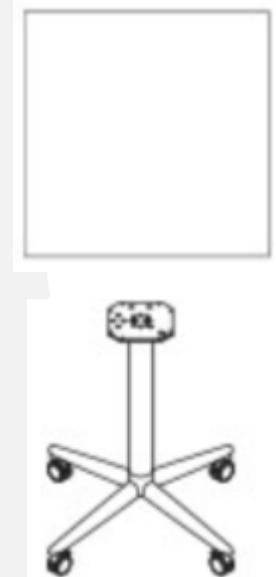
# Conference Room A134



Allsteel,  
Relate 4-Leg Chair with Casters,  
Upholstered Seat and Mesh Back  
Qty: 12



Allsteel,  
Structure Table, Square Top with  
X-Base with Casters  
36"W x 36"D x 28"H  
Qty: 6



Allsteel,  
Align Footed Console with Laminate  
Top  
Size: 60" W x 22" H x 18" D  
Qty: 1



# Clinic A103



**School Health, Option 1**  
Biltmore Recovery Couch XL with Wood Legs  
Adjustable 12-position headrest, fingertip control and positive locking device  
Size: 76" L x 29" W x 20" H  
Qty: 1

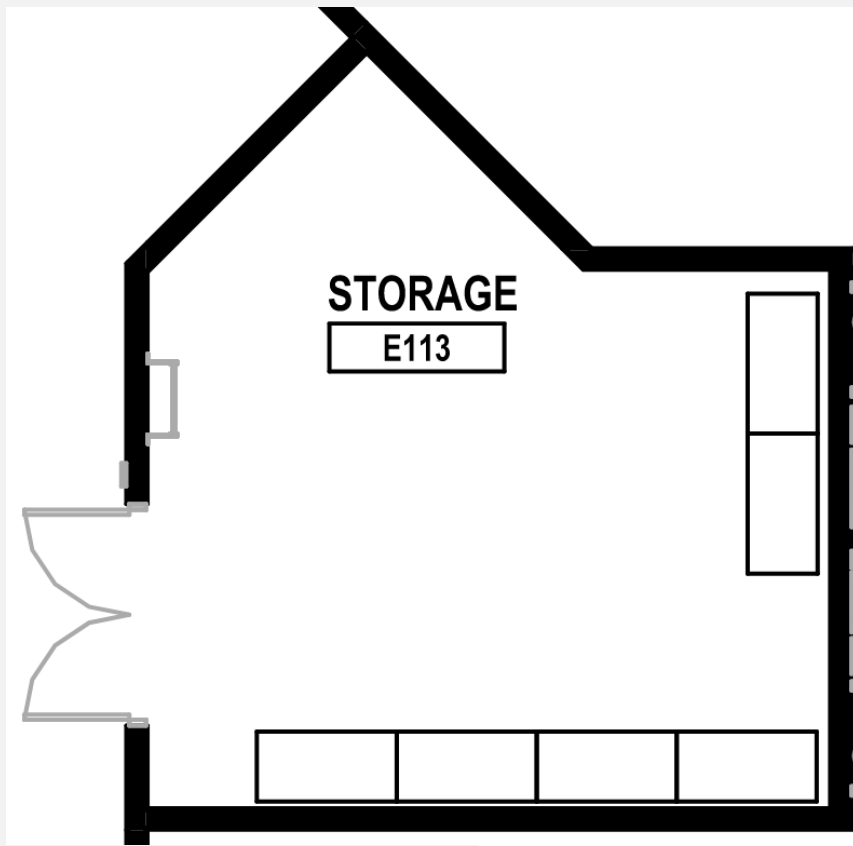


**Allsteel,**  
Relate 4-Leg Chair with Casters,  
Upholstered Seat and Mesh Back  
Qty: 1



**Lakeshore - Heavy Duty Stacking Chairs**  
13.5" (without arms)  
All Stack 3 high  
Qty: 2

# Storage Areas

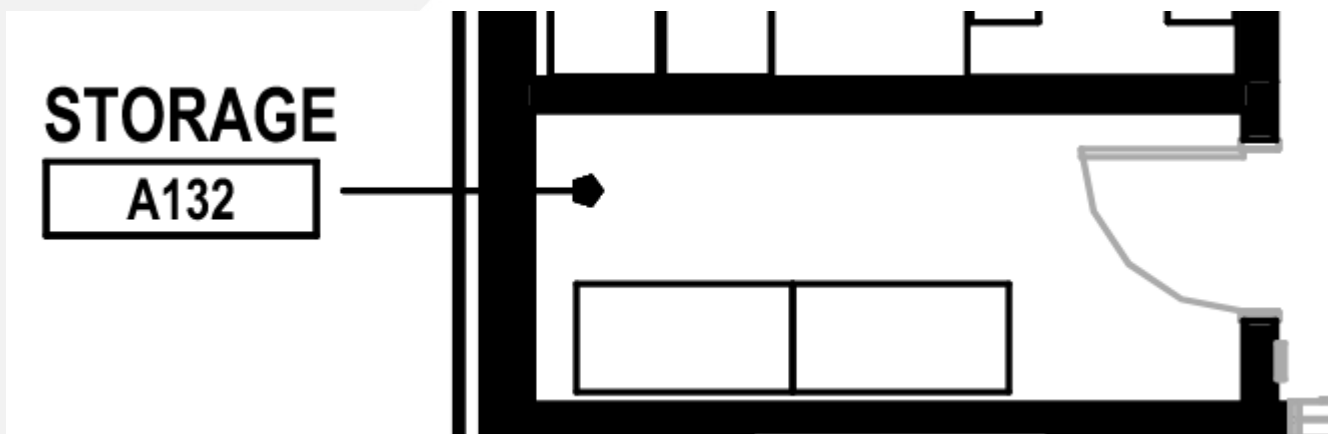


not included.

**Saftco, Wire Shelving with Adjustable Height Shelves**  
Size: 48" W x 24" D x 72" H  
Qty: (6) Storage E113  
(2) Storage A132



**Gopher Ball Rack**  
Size: 9" W x 40" L x 34" H  
3 tiers, can hold 12 balls  
Qty: 1





# Back of House



not included.

## Safco, Wire Shelving with Adjustable Height Shelves

Size: 48" W x 24" D x 72" H

Qty: (2) JC E139

(11) Storage E141

(7) Receiving E147

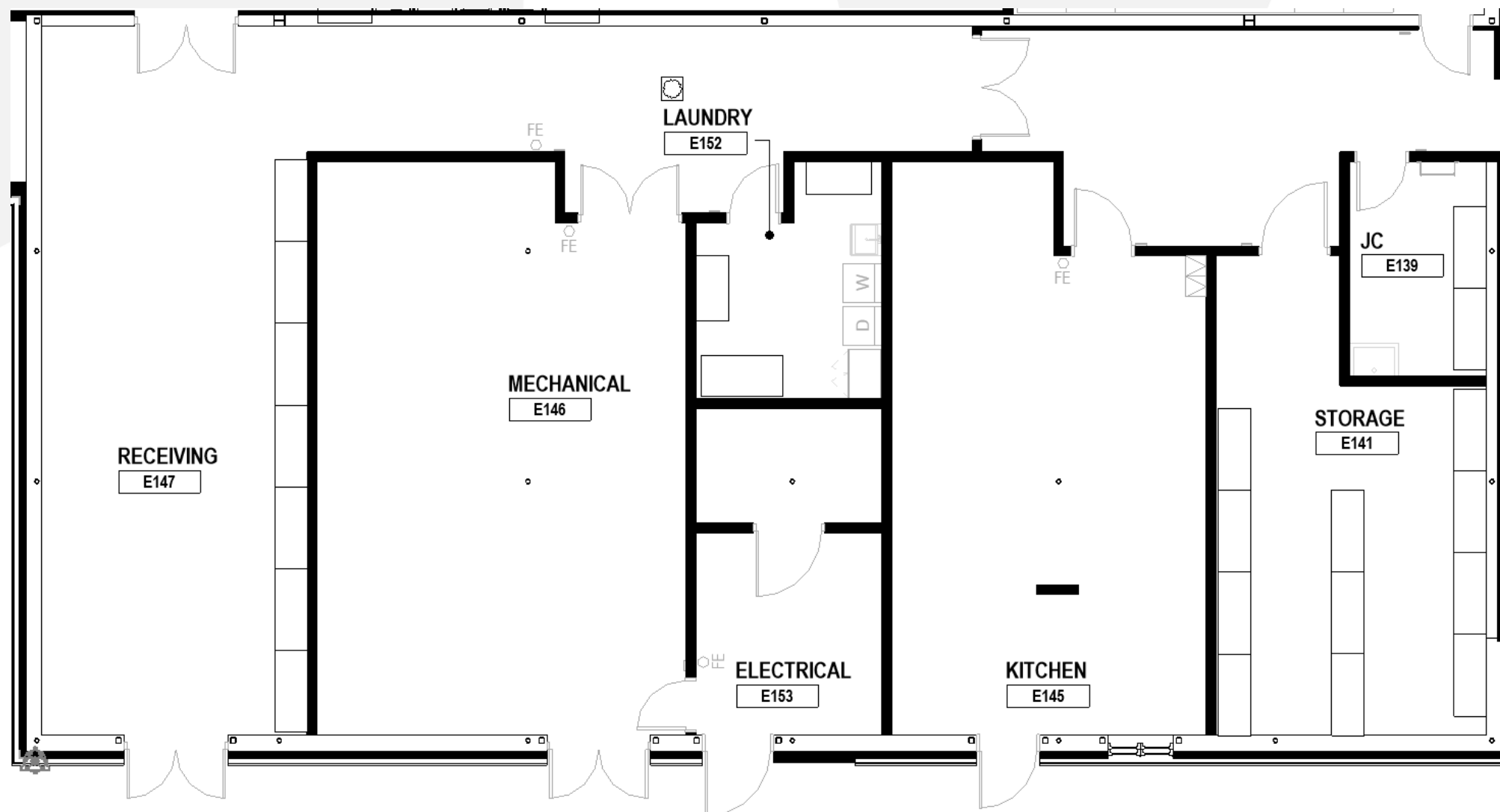
(2) Laundry E162



## KI, Folding Table

Size: 30" W x 60" L

Qty: (1) Laundry Room





**Thank you!**