

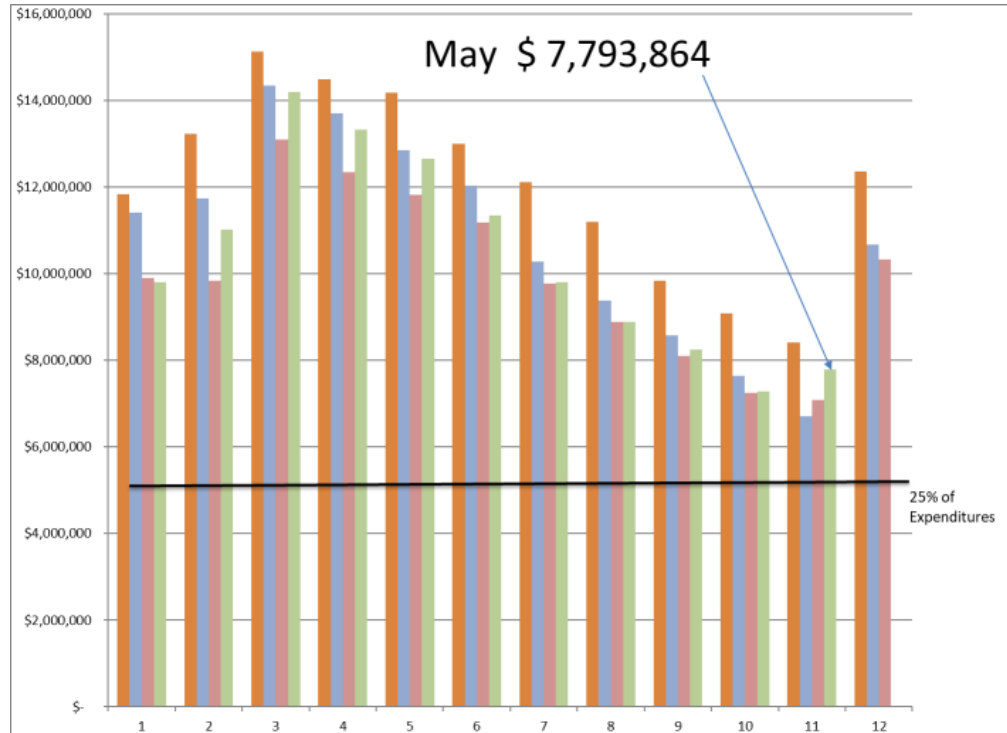
# Fund Balance- May 2022

May 2022	Revenue			Expenses			Fund Balances		
	FY22 Budget	FY22 Actual	% Budget	FY22 Budget	FY22 Actual	% Budget	Balance as of 7/1/21	Balance as of 05/31/22	+/-
Fund Operational									
10- Education	\$ 15,562,301	\$ 10,873,679	69.9%	\$ 15,861,806	\$ 12,736,716	80.3%	\$ 5,599,144	\$ 3,736,107	\$ (1,863,037)
20- Oper & Main	\$ 2,236,370	\$ 1,621,580	72.5%	\$ 1,775,623	\$ 1,470,433	82.8%	\$ 2,245,166	\$ 2,396,313	\$ 151,147
40- Transportation	\$ 745,186	\$ 510,734	68.5%	\$ 940,341	\$ 873,757	92.9%	\$ 641,416	\$ 278,393	\$ (363,023)
50- IMRF/SS	\$ 588,204	\$ 367,369	62.5%	\$ 570,856	\$ 461,887	80.9%	\$ 285,135	\$ 190,617	\$ (94,518)
70- Working Cash	\$ 119,058	\$ 70,796	59.5%	\$ -			\$ 822,042	\$ 892,838	\$ 70,796
<b>TOTAL</b>	<b>\$ 19,251,119</b>	<b>\$ 13,444,158</b>	<b>69.8%</b>	<b>\$ 19,148,626</b>	<b>\$ 15,542,793</b>	<b>81.2%</b>	<b>\$ 9,592,903</b>	<b>\$ 7,494,268</b>	<b>\$ (2,098,635)</b>
<b>Net Operational Position-ISBE</b>							\$ -		\$ (2,004,117)
Fund Non-Operational							\$ -		
30- Debt Service	\$ 151,000	\$ 32,982	21.8%	\$ 308,277	\$ 308,278	100.0%	\$ 367,931	\$ 92,635	\$ (275,296)
60- Capital Projects	\$ 2,000	\$ 467	23.4%	\$ 450,000	\$ 112,212	24.9%	\$ 318,706	\$ 206,961	\$ (111,745)
Total	\$ 153,000	\$ 33,449	21.9%	\$ 758,277	\$ 420,490	55.5%	\$ 686,637	\$ 299,596	\$ (387,041)
							\$ -		
<b>Grand Total</b>	<b>\$ 19,404,119</b>	<b>\$ 13,477,607</b>	<b>69.5%</b>	<b>\$ 19,906,903</b>	<b>\$ 15,963,283</b>	<b>80.2%</b>	<b>\$ 10,279,540</b>	<b>\$ 7,793,864</b>	<b>\$ (2,485,676)</b>

# Financials by Revenue Source and Object (85%)

<b>May 2022- Revenues</b>						
<i>Source</i>	Budget FY22	FY22 YTD	FY21 YTD	Change	% Budget	% Change
Property Taxes	\$ 13,716,257	\$ 8,193,871	\$ 7,176,665	\$ 1,017,206	59.74%	14.2%
Other Local Sources	\$ 1,007,150	\$ 1,394,056	\$ 929,674	\$ 464,382	138.42%	50.0%
State	\$ 2,412,575	\$ 2,218,746	\$ 2,272,089	\$ (53,343)	91.97%	-2.3%
Federal	\$ 2,268,137	\$ 1,665,931	\$ 1,006,313	\$ 659,618	73.45%	65.5%
All Funds	\$ 19,404,119	\$ 13,472,604	\$ 11,384,741	\$ 2,087,863	69.43%	18.3%
Operational Funds	\$ 19,251,119	\$ 13,439,156	\$ 11,212,376	\$ 2,226,780	69.81%	19.9%
<b>May 2022- Expenses</b>						
	Budget FY22	FY22 YTD	FY21 YTD	Change	% Budget	% Change
Salaries	\$ 10,179,133	\$ 8,036,058	\$ 7,361,293	\$ 674,765	78.95%	9.2%
Benefits	\$ 3,225,052	\$ 2,451,270	\$ 2,287,101	\$ 164,169	76.01%	7.2%
Purchased Services	\$ 2,329,171	\$ 1,869,128	\$ 1,449,790	\$ 419,338	80.25%	28.9%
Supplies	\$ 987,020	\$ 792,101	\$ 792,804	\$ (703)	80.25%	-0.1%
Capital Outlay	\$ 712,000	\$ 426,886	\$ 1,108,842	\$ (681,956)	59.96%	-61.5%
Other Objects	\$ 2,112,977	\$ 2,042,697	\$ 1,799,416	\$ 243,281	96.67%	13.5%
Non-Capitalized Equipment	\$ 269,000	\$ 260,429	\$ 80,303	\$ 180,126	96.81%	224.3%
Termination Benefits	\$ 92,550	\$ 84,173	\$ 95,521	\$ (11,348)	90.95%	-11.9%
All Funds	\$ 19,906,903	\$ 15,962,744	\$ 14,975,070	\$ 987,674	80.19%	6.6%
Operational Funds	\$ 19,148,626	\$ 15,542,255	\$ 13,533,569	\$ 2,008,686	81.17%	14.8%
Net Operational Position	\$ 102,493	\$ (2,103,099)	\$ (2,321,193)	\$ 218,094		

# Fund Balance History



# State Delinquency

