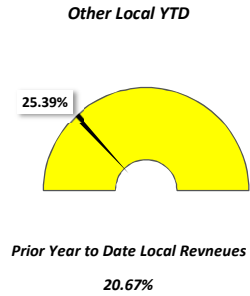
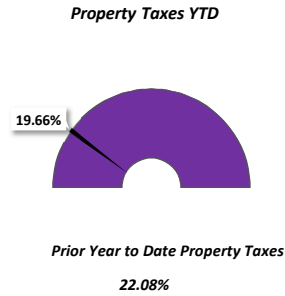
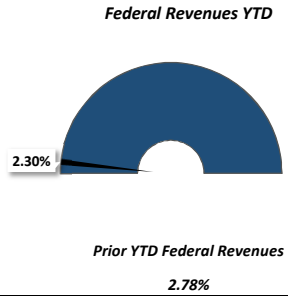
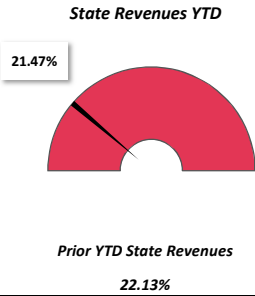


YTD % Received vs. PYTD % Received

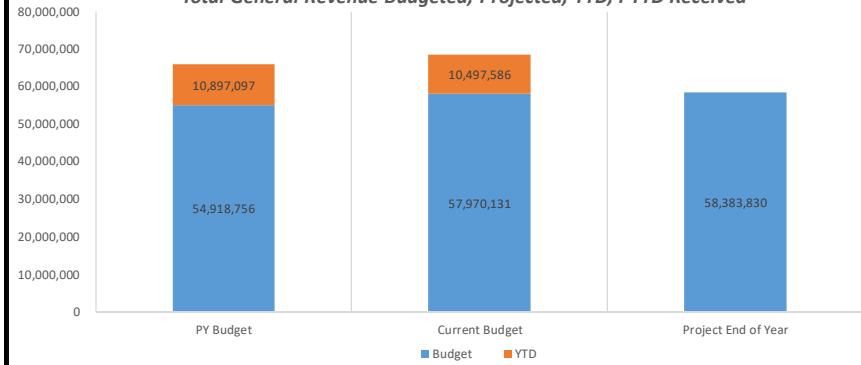


Top 5 Revenues Received YTD by Source Code 3

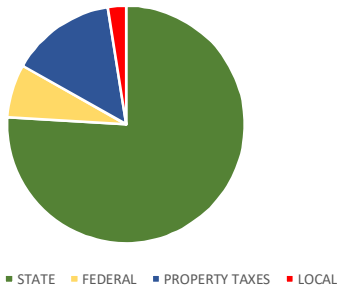
Variance from PYTD Received

	Current YTD	Variance vs. PYTD
1 GENERAL FUND TOTAL	\$10,497,586	-\$399,511
2 Total STATE REVENUES	\$8,472,175	-\$589,478
3 GENERAL EDUCATION AID	\$6,473,832	-\$790,369
4 STATE AID FOR SPECIAL EDU	\$1,885,605	\$167,428
5 Total LOCAL REVENUES	\$1,749,181	\$92,356

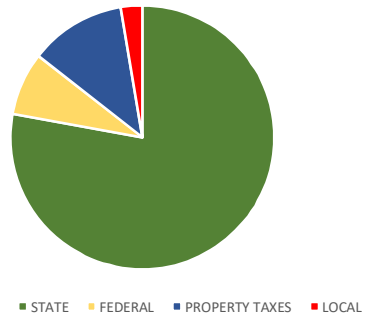
Total General Revenue Budgeted, Projected, YTD, PYTD Received



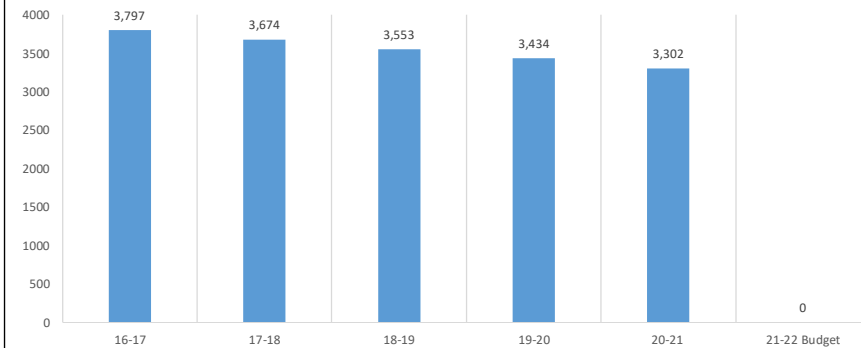
Current Year Revenue Budget



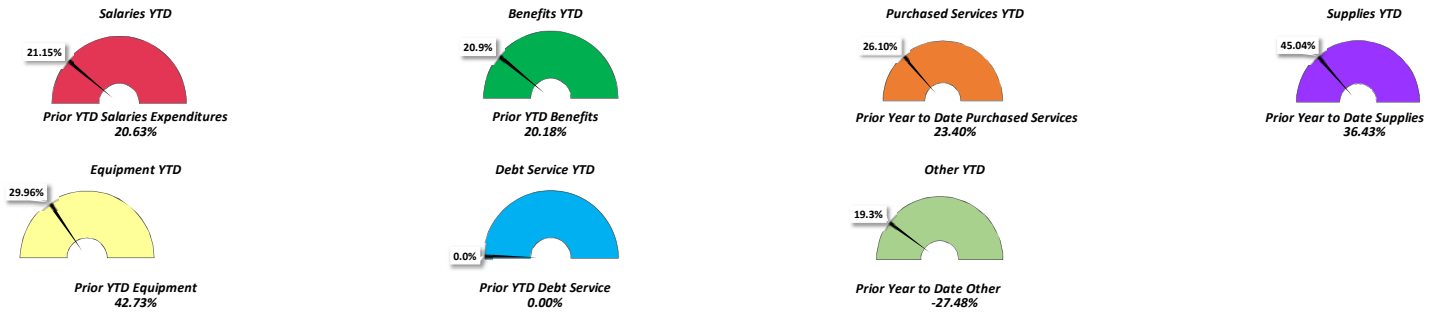
Prior Year Revenue Budget



End of Year ADM History



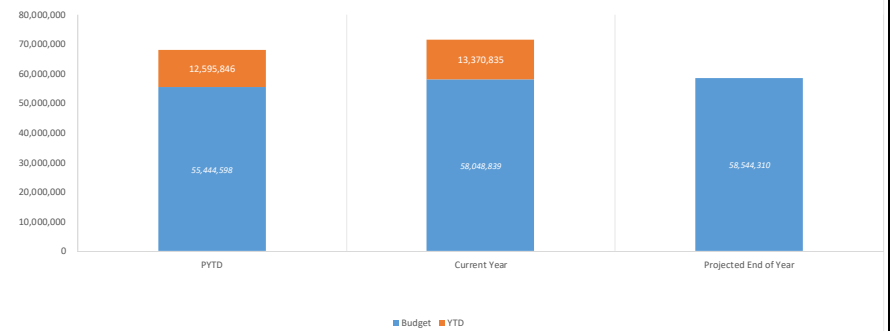
YTD % Expenditures vs. PYTD % Expenditures



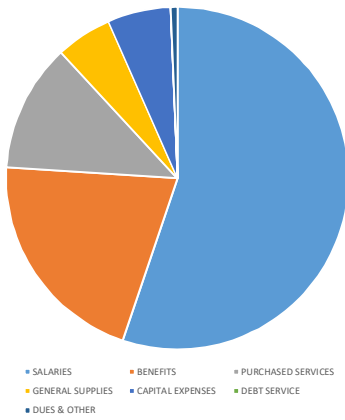
**Top 10 Expenditures YTD by Object Code 3
Variance from PYTD Received**

	Current YTD	Variance vs. PYTD Received
1 TOTAL SALARIES AND WAGES	\$7,111,410	\$802,132
2 LICENSED CLASSROOM TEACHER	\$3,171,493	\$261,856
3 TOTAL EMPLOYEE BENEFITS	\$2,524,516	\$192,780
4 TOTAL PURCHASED SERVICES	\$2,033,520	\$459,994
5 HEALTH INSURANCE	\$1,007,521	\$72,293
6 ADMINISTRATION/SUPERVISION	\$834,011	-\$38,776
7 TRANSPORT CONTR <--\$25,000	\$620,216	\$202,196
8 OTHER LICENSED/CERTIFIED SALARY	\$532,048	\$69,584
9 FICA/MEDICARE	\$522,255	\$60,160
10 TRA	\$401,568	\$47,169

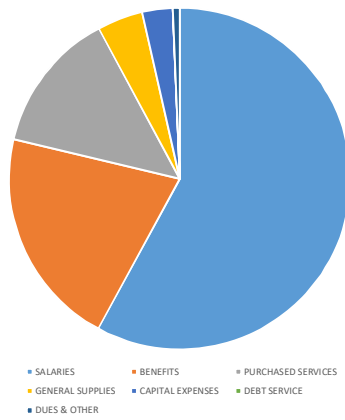
**Total General Expenditures Budgeted, Projected, YTD and ,
PYTD Expended**



Prior Year Final



Current Year Budget



Prior Year Final and Current Budget by Program

