



**2018 Theme**

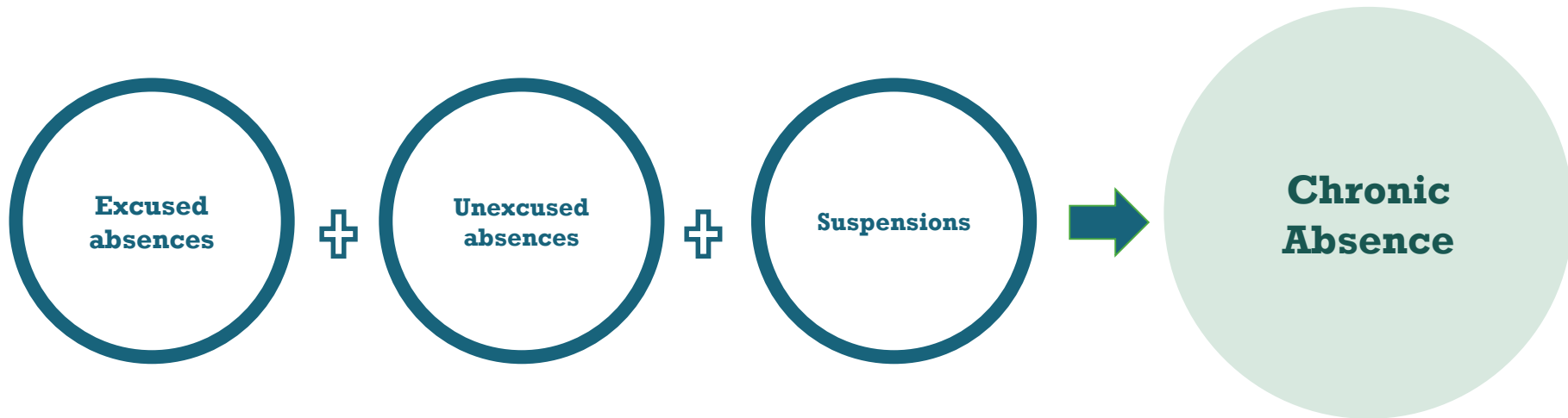
# Team Up for Attendance!





## What is Chronic Absence?

**Chronic absence** is missing so much school for any reason that a student is academically at risk. Attendance Works recommends defining it as **missing 10% or more of school for any reason.**

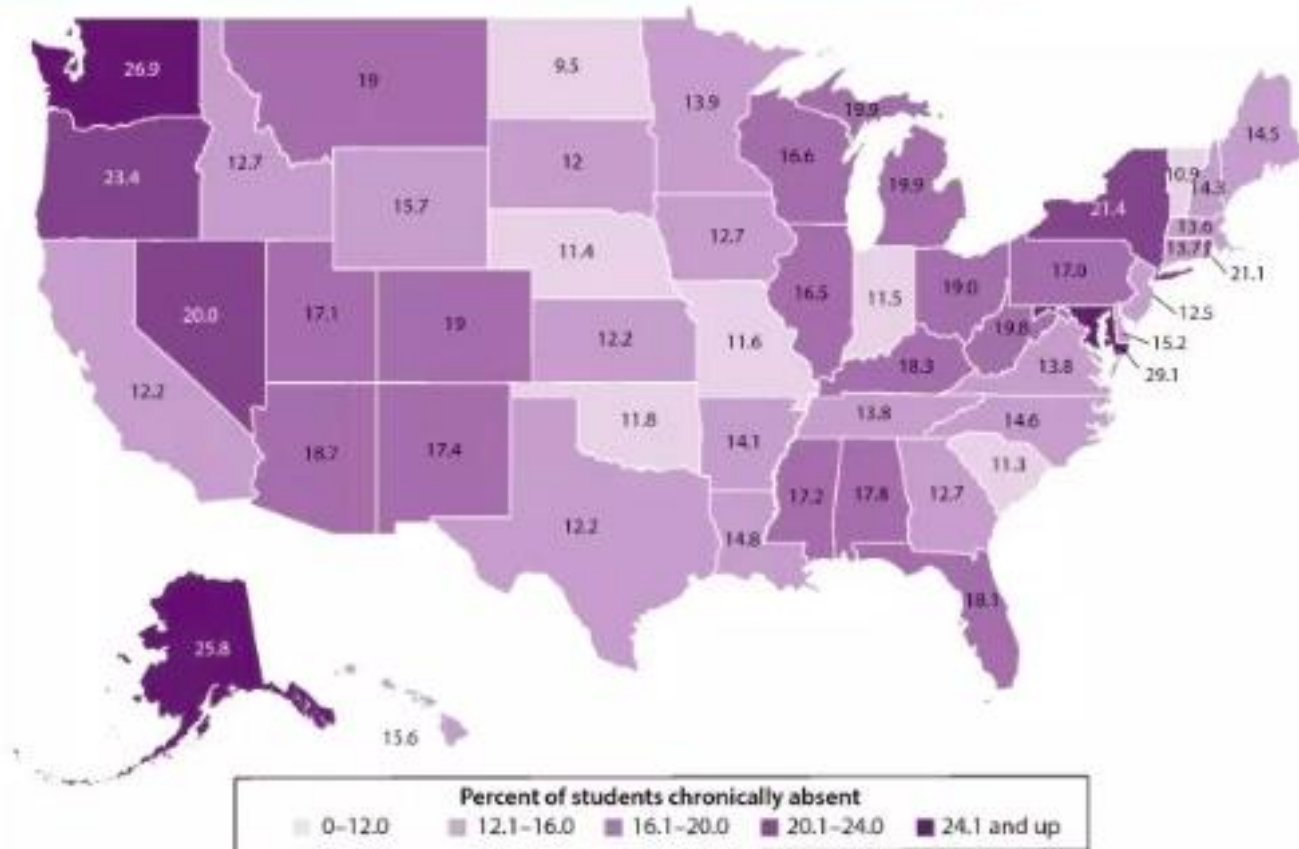


Chronic absence is different from **truancy** (unexcused absences only) or **average daily attendance** (how many students show up to school each day).

# 1 of 6 students misses 15 days or more

FIGURE 3.

Percent of Student Chronically Absent by State, 2015–16



Source: Civil Rights Data Collection (CRDC), U.S. Department of Education, 2013–14, 2015–16.

Note: The CRDC defines chronic absenteeism as missing 15 or more days of school in a school year. The District of Columbia has a value of 31.0%.



# This Is a Watershed Moment

## No Child Left Behind

Success determined by academic standards.

Federal targets and interventions for schools; punitive system of responses.

Accountability and data for student sub-groups.

Each state defines and addresses truancy which typically emphasizes court based, punitive, interventions.

## Every Student Succeeds Act

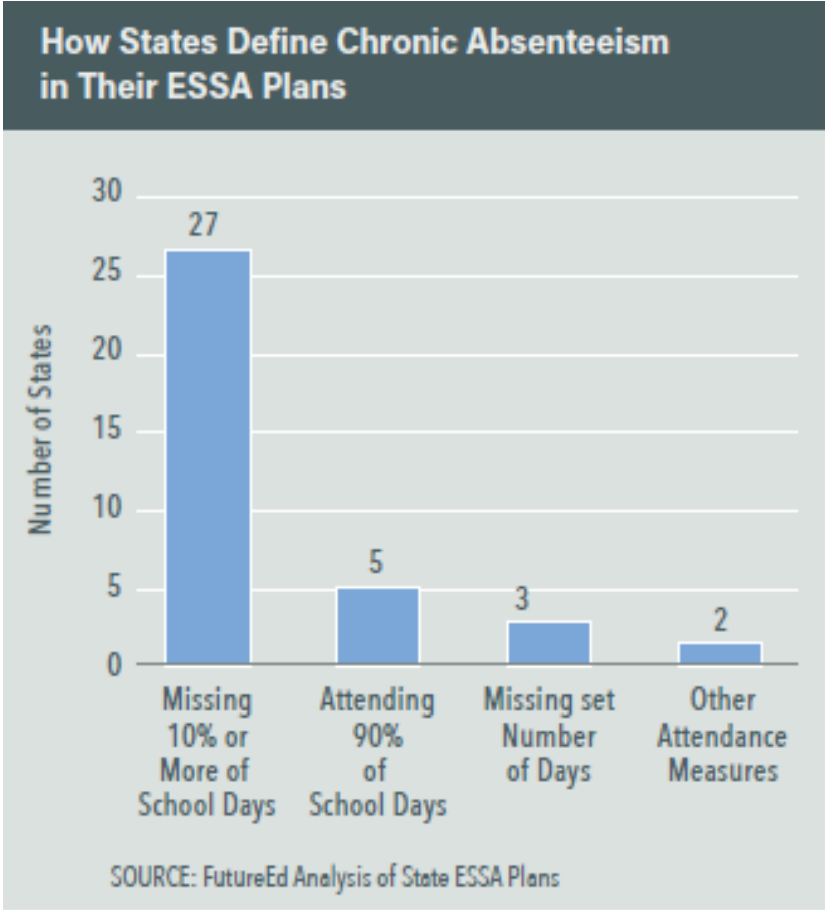
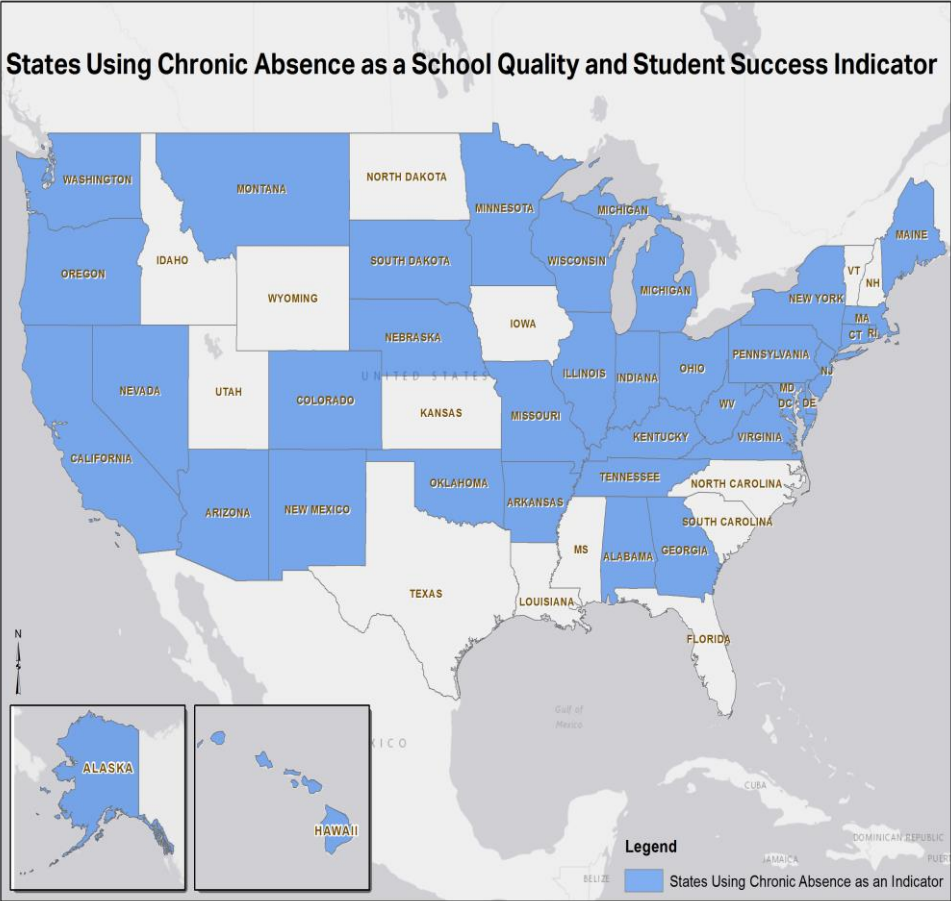
Success determined by academic & nonacademic standards.

States set goals; supportive framework.

Accountability and data for student sub-groups.

Chronic absence is a required reporting & optional school quality metric. It emphasizes prevention and early intervention.

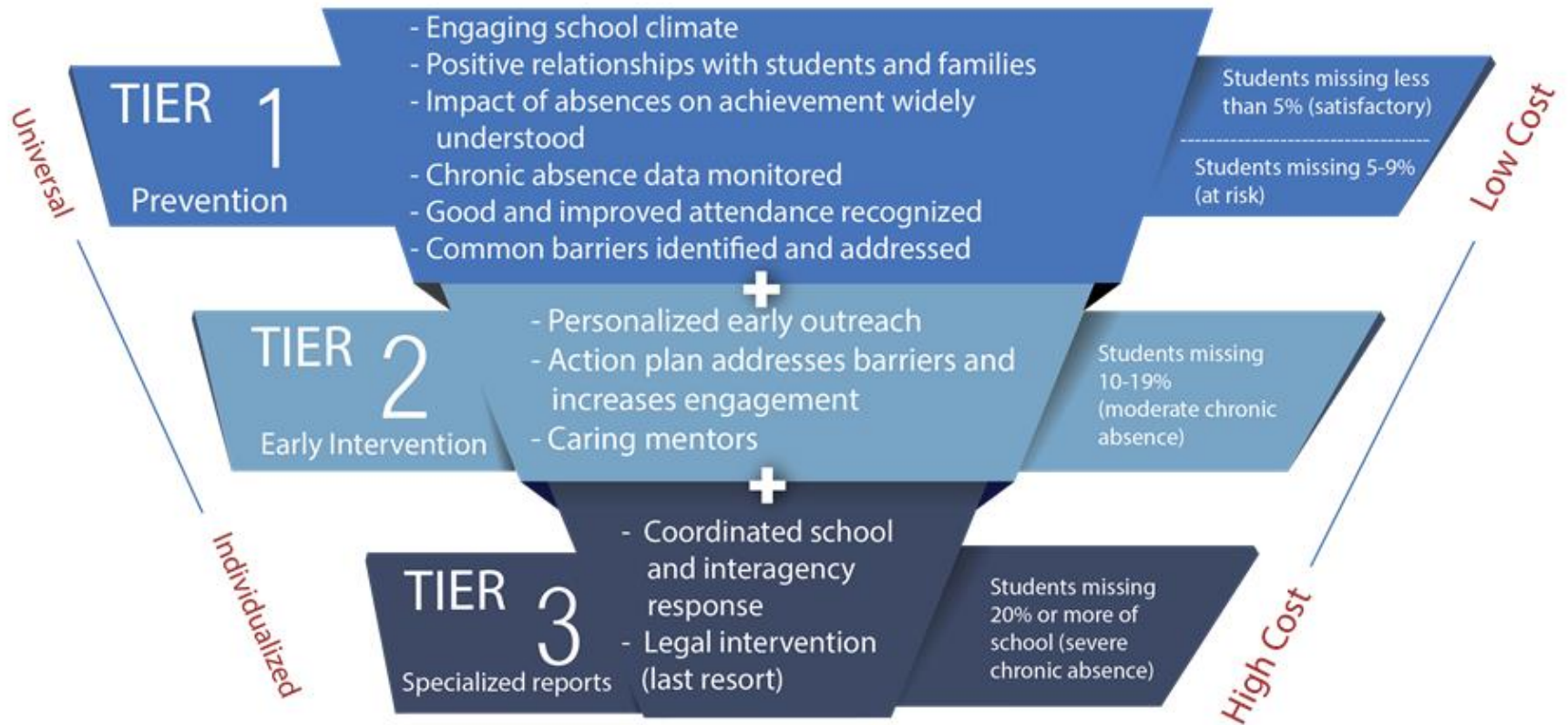
# 36 States and District of Columbia adopted chronic absence as a metric in their ESSA plan



**Who's In: Chronic Absenteeism Under the Every Student Succeeds Act**  
**Future Ed, Georgetown University, September 2017.**



## Invest in Prevention and Early Intervention



# Take a Data Driven Systemic Approach

## Positive Engagement:

Uses caring relationships, effective messaging and a positive school climate to motivate daily attendance.

## Actionable Data:

Is accurate, accessible, and regularly reported in an understandable format.

Community

District

Positive Engagement

Actionable Data

Schools

Students & Families

Shared Accountability

Capacity Building

## Shared Accountability:

Ensures chronic absence is monitored & reinforced by policy.

## Capacity Building

Expands ability to work together to interpret data, engage in problem solving, and adopt best practices to improve attendance.

## Strategic partnerships

between district and community partners address specific attendance barriers and mobilize support for all ingredients.





## Reflects New Paradigm on Attendance

### Truancy

- Counts unexcused absences
- Emphasizes individual compliance with school rules
- Uses legal, typically more punitive solutions

### Chronic Absence

- Counts all absences
- Emphasizes academic impact of missed days
- Uses prevention and problem solving strategies





## Tailor Response to Scale and Intensity of the Challenge

- **At the District Level:** is there a need for a community-wide response or targeted efforts in a sub-set of schools?
- **At the School Level:** how many students are chronically absent?
- **If it's 30 or less,** a student support team can lead the effort.
- **If it's closer to 50 or more,** teachers will need to play a critical role.
- **If it's over 100,** community partners will likely be needed to provide additional person power

*Source: Everyone Graduates Center*



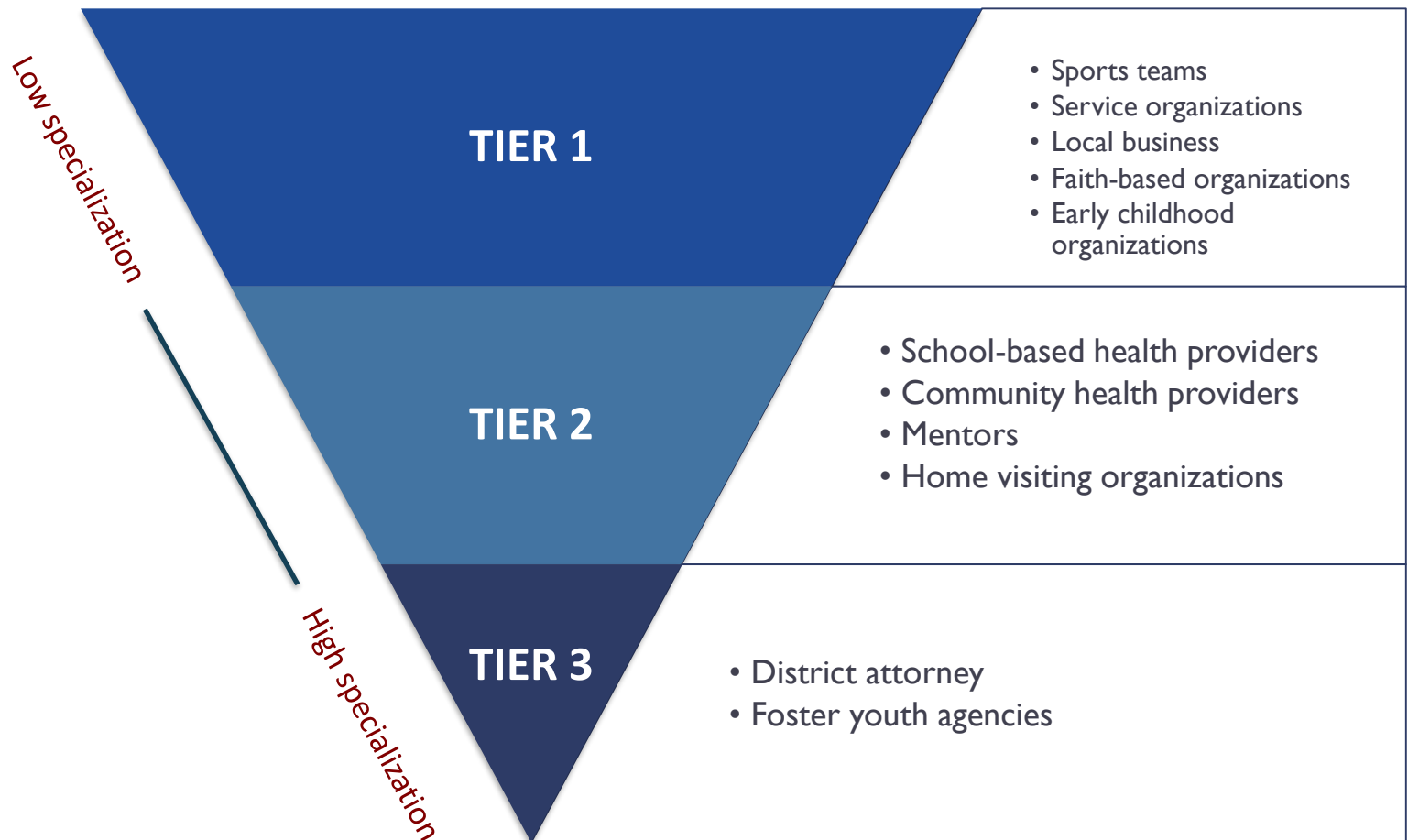
## **Possible Partners for Change**

The greater the size of the challenge, the more partners are needed. Many different types of partners can be enlisted, but local government and public agencies are especially important.

- **Businesses**
- **Community Schools Initiatives**
- **Family Support Organizations**
- **Early Childhood Providers**
- **Faith Based Organizations.**
- **Health Providers**
- **Housing Agencies**
- **Hunger Relief Organizations**
- **Institutes of Higher Education**
- **Local Government**
- **National Service/  
Volunteers/Mentors**
- **Out of School Time providers**
- **Social Emotional Learning  
Providers**
- **Social Services**
- **Population-Specific Service or Civic  
Organizations**
- **Philanthropy (including  
foundations and United Ways)**



## Partnership Across Tiers of Intervention

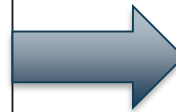




## Critical Role of Conveners

### Possible Conveners:

- ✓ Superintendents
- ✓ Mayors
- ✓ Funders
- ✓ Existing community coalitions



### Key Functions:

- ✓ Clarify the vision and purpose of the collaborative effort
- ✓ Identify and engage stakeholders and leaders to invite to the table
- ✓ Secure stakeholder buy-in
- ✓ Establish clear roles for stakeholders



## Questions from the Audience

