



To:
Frisco ISD
John Lara
469-633-6988 (Contact)
laraj@friscoisd.org

Project:
Frisco ISD RFP 864-2025-05-27
- Bledsoe Elementary &
Wakeland High School for PO by
7/20/26

From:
Pasco Brokerage Inc
Kristin Mason
6465 Chase Oaks Blvd.
Plano, TX 75023
972-596-3350 (Contact)
kmason@pascoinc.net

Project Code: AS2244

Job Reference Number: 00487822

Price does include inside delivery with installation by Master Fab.
Terms: Net 30 Days, Check or ACH

Please note any and all receiving limitations on your submitted purchase order. This includes closure dates and limited receiving hours. Correct ship-to address **MUST** be on Purchase Order. Pasco will not be responsible for any redelivery or reconsignment charges.

PLEASE CAREFULLY READ THE TERMS AND CONDITIONS OF THE QUOTE BELOW

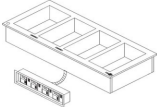
- **Payment & Performance Bonds (if needed) have NOT been included but are available at an additional cost of \$5,285.00**

Pasco is a certified Woman Owned Business, certificate number 2005116829
Pasco is a certified Woman Owned Small Business, certificate number WOSB171585.

**Pricing good for order placed by July 2026,
completion of projects by December 2026.**

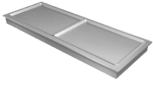
| Item | Qty | Description | Sell | Sell Total |
|-----------------------------------|------|---|--------------|--------------|
| BLED SOE ELEMENTARY SCHOOL | | | | |
| B1 | 1 ea | <p>QUOTE Master Fabricators Model No. QUOTE Master Fab Quote # 1285 (1/20/2026) Expires 7/20/2026</p> <p>Cirilo Counter Collection: Item #101 Model# MFC-SSL-2633 Consisting of the following:</p> <p>1 ea ITEM # 101 · Closed Base Body · Counter Body Frame to be constructed of 1-1/2" x 1-1/2" x 1/8" galvanized angle iron, run front-to-back at each mullion and fully welded. Welds are to be ground smooth and sprayed with silver enamel paint · Counter body frame to be housed and constructed with 18-gauge #304 Stainless Steel, all fully welded. · 14 Gauge Stainless Steel Top at 30" and 34" A.F.F · 14 Gauge Stainless Steel V Notched Trayslide and LED Display Lights at 30" A.F.F. · Front Finish: Removable Laminate Panels - Color Selection By Owner · (2) Load center - All electrical to be pre-wired to load center 120/208v 3Phase 100 Amp</p> <p>1 ea 101-A1 Master Fabricators Single Tier Clearvista Adjustable Sneeze Guard with 3/8" Full Height Starphire Glass including LED Display Lights and (1) Hatco Heat Lamp Model #GRN-42 (By Dealer) over (3) Delfield Dry Hot Food Wells Model #N8717-DESP (By Dealer) at 34" A.F.F.</p> <p>1 ea 101-A2 Drop In Duel Tier Frost Top with Stainless Steel over shelf with Display Lights, Lower Tier: Single Pan Frost; Upper Tier: Single Pan Frost Model #N8230-STP (By Dealer) at 30" A.F.F.</p> <p>1 ea 101-A3 Master Fabricators Double Tier Clearvista Fixed Sneeze Guard with 3/8" Half Height Starphire Glass including LED Display</p> | \$152,413.00 | \$152,413.00 |

| Item | Qty | Description | Sell | Sell Total |
|------|------|--|-------------|-------------|
| | | Lights; Lower tier (1) Delfield Three Pan Cold Pan Model #N8143BP (By Dealer) ; Upper Tier: (1) Hatco Frost Top Model #FTBR-2 (By Dealer) at 30" A.F.F. | | |
| | 2 ea | 101-B Delfield Ice Cream Merchandiser with Clear Lid Model #N225P (By Dealer) at 30" A.F.F. | | |
| | 2 ea | 101-B2 Integral cashier station with removable till tray, spring loaded easy glide drawer, mounted to the underside of the countertop. Provide D.C.O.'s, POS dedicated outlets below countertop; at 34" A.F.F. · (2) 2-1/2" Two Piece High Polished Chrome Grommet | | |
| | 1 ea | 101-C1 Master Fabricators Single Tier Clearvista Adjustable Sneeze Guard with 3/8" Full Height Starphire Glass including LED Display Lights and (1) Hatco Heat Lamp Model #GRN-42 (By Dealer) over (3) Delfield Dry Hot Food Wells Model #N8717-DESP (By Dealer) at 34" A.F.F. | | |
| | 1 ea | 101-C2 Drop In Duel Tier Frost Top with Stainless Steel over shelf with Display Lights, Lower Tier: Single Pan Frost; Upper Tier: Single Pan Frost Model #N8230-STP (By Dealer) at 30" A.F.F. | | |
| | 1 ea | 101-C3 Master Fabricators Double Tier Clearvista Fixed Sneeze Guard with 3/8" Half Height Starphire Glass including LED Display Lights; Lower tier (1) Delfield Three Pan Cold Pan Model #N8143BP (By Dealer) ; Upper Tier: (1) Hatco Frost Top Model #FTBR-2 (By Dealer) at 30" A.F.F. · Stainless Steel Leveling Bullet Feet · Stainless steel removable kickplates · Counter to be UL and NSF Certified | | |
| | 1 ea | INSTALL Installation by Master Fabricators: | \$15,598.00 | \$15,598.00 |
| | | Master Fabricators to remove all existing counters and deliver existing counters to owners specified location (Or instructed otherwise). MF to disconnect existing electrical from load centers / receptacles and electrical chase. MF to disconnect existing water / drains lines as required. All ceiling wall and floor penetrations to be replaced as required. All existing utility stub ups to be cap off as required. Floor tile replacement as required. All ceiling tiles need to be replaced due to existing power / Data System chases. MF to deliver new counters, set-in place installation, completion of all field welds and joints, leveling and final assembly of counters, final connections by Master Fabricators | | |
| | 1 ea | NOTE Note: Dealer will coordinate with Master Fabricators on buyout item options such as lead lengths and electrical requirements | | |
| | | This is a quotation on the goods named, subject to the conditions noted below: 1.) Master Fabricators to fabricate all counters as per approved | | |

| Item | Qty | Description | Sell | Sell Total |
|------|------|---|--------------------|---------------------|
| | | <p>drawings.</p> <p>2.) Lead time is 14 to 16 weeks once all RFIs are closed, field dimensions are completed and final drawings are approved.</p> <p>3.) Any additional modifications not stated on this quote will be subject to a revised invoice</p> <p>To Be Provided By Dealer:</p> <p>(6) Delfield Dry Hot Food Wells Model #N8717-ESP (2) Delfield Three Pan Cold Pan Model #N8143BP (2) Delfield Dual Tier Frost Model #N8230-STP (2) Delfield Ice Cream Merchandiser with Clear Lid Model #N225P (2) Hatco Heat Lamp Model #GRN-42 (With Extended Leads and Remote Infinite Switch) (2) Hatco Frost Top Model #FTBR-2 (Remote)</p> | | |
| | | | ITEM TOTAL: | \$168,011.00 |
| B2 | 6 ea | <p>HOT FOOD WELL UNIT, DROP-IN, ELECTRIC Delfield Model No. N8717-DESP Drop-In Hot Food Well Unit, Electric, individual pans, wet/dry type with drain & manifold, 1-pan size for 12" x 20" pan, individual digital temperature controls, stainless steel top & wells, galvanized exterior body, (16-7/8" x 25" cutout required), UL, NSF, cUL, CE</p> <p>SKU # 000-AXG14BHM1</p> <p>6 ea Note: If installation of equipment is in Michigan, there is a local code requirement that requires individual drain valves on these models. Please add the accessories as required.</p> <p>6 ea 0460000N 1 year parts & labor warranty, standard</p> <p>6 ea 208-230v/60/1-ph, 2.4/2.7 amps, 500 watts, standard</p> <p>6 ea DRP-DROMIT Omit drain, deduct</p> | \$1,797.00 | \$10,782.00 |
| | |  | | |
| | | | ITEM TOTAL: | \$10,782.00 |
| B3 | 2 ea | <p>FROST TOP / COLD SLAB, DROP IN Delfield Model No. N8232-2CTP Drop In Frost Top R290 Two Tier (2) 18x26 sheet pans Alum Top</p> <p>Delfield SKU # 000-AW914BHM3</p> <p>2 ea 605F1 (1) 605F1 - SINGLE TIER S/S OVERSHELF TO MATCH BOTTOM TIER</p> <p>2 ea 503U (2) 503U - (2) TEMPERED GLASS SNEEZE FRONT</p> <p>2 ea DCFSLED (2) DCFSLED - (2) LED LIGHT</p> <p>2 ea 0460000N 1 year parts & labor warranty, standard</p> <p>2 ea W00003A 5 year compressor warranty (NET priced – no further</p> | \$9,301.00 | \$18,602.00 |
| | | | \$338.00 | \$676.00 |

| Item | Qty | Description | Sell | Sell Total |
|------|------|---|--------------------|--------------------|
| | | discount) | | |
| | | | ITEM TOTAL: | \$19,278.00 |
| B4 | 2 ea | ICE CREAM DIPPING CABINET Delfield Model No. N225P Ice Cream Dipping Cabinet/Freezer, drop-in type, 6 gallon capacity, self-contained, removable cover with handle, stainless steel top and lid, includes (1) 13" x 25" stainless steel louver, 1/5 HP, (26.62" x 16.12" cutout required), R290 Hydrocarbon refrigerant, UL, NSF | \$4,085.00 | \$8,170.00 |
| | |  | | |
| | 2 ea | W00003A 5 year compressor warranty (NET priced – no further discount) | \$338.00 | \$676.00 |
| | 2 ea | 115v/60/1-ph, 1.8 amps, NEMA 5-15P, standard | | |
| | 2 ea | AS3234189 Transparent Lid, per pan opening (shipped loose), for N225P (requires 1) & N227P (requires 2) | \$492.00 | \$984.00 |
| | | | ITEM TOTAL: | \$9,830.00 |
| B5 | 2 ea | COLD FOOD WELL UNIT, DROP-IN, REFRIGERATED Delfield Model No. N8143BP Drop-In Mechanically Cooled Pan, 43-1/2"W x 26" D, 3-pan size, 1" dia. drain, insulated pan, stainless steel inner liner & top, galvanized steel outer liner, includes adapter bars, self-contained refrigeration, R290 Hydrocarbon refrigerant, 1/4 HP, (42-1/2" x 25" cutout required), cUL, UL, NSF | \$4,329.00 | \$8,658.00 |
| | |  | | |
| | 2 ea | 0460000N 1 year parts & labor warranty, standard | | |
| | 2 ea | W00003A 5 year compressor warranty (NET priced – no further discount) | \$338.00 | \$676.00 |
| | 2 ea | 115v/60/1-ph, 3.1 amps, NEMA 5-15P, standard | | |
| | | | ITEM TOTAL: | \$9,334.00 |
| B6 | 2 ea | HEAT LAMP Hatco Model No. GRN-42 Glo-Ray® Narrow Infrared Strip Heater, 42" L, tubular metal heater rod, single heater rod housing, steel housing in a variety of colors with angle mounting bracket, 675 watts, cULus, UL EPH Classified, Made in USA | \$320.00 | \$640.00 |
| | |  | | |
| | 1 ea | NOTE: Includes 24/7 parts & service assistance, call 414-671-6350 | | |
| | 2 ea | One year on-site parts & labor warranty, plus one additional year parts only warranty on all Glo-Ray metal sheathed elements | | |
| | 2 ea | 208v/60/1-ph | | |
| | 2 ea | RMB-7G Remote Control Enclosure, (1) infinite switch, (1) indicator light (for 208 volt only) | \$140.00 | \$280.00 |
| | 2 ea | SPECIFY MUST SPECIFY designer color selected from list of standard colors & indicated on order (available at time of purchase only) | \$40.00 | \$80.00 |
| | 2 ea | LEADS15 11'-15' Extended Electrical Leads (available at time of purchase only) | \$50.00 | \$100.00 |

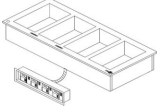
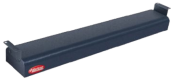
| Item | Qty | Description | Sell | Sell Total |
|-----------------|------|---|--------------------|---------------------|
| | 2 ea | STANDARD Black designer color, standard (available at time of purchase only) | | |
| | | | ITEM TOTAL: | \$1,100.00 |
| B7 | 2 ea | FROST TOP / COLD SLAB, DROP IN Hatco Model No. FTBR-2 Drop-In Frost Top, 39"L, accommodates (2) full size sheet pan, auto defrost, electronic adjustable temperature control can be mounted to either side of condensing unit or remotely up to 4' from unit, 1" NPT drain, remote refrigeration & control panel, R513a, 1/4 HP, cULus, Made in USA, NSF | \$4,500.00 | \$9,000.00 |
| | 1 ea | NOTE: Includes 24/7 parts & service assistance, call 414-671-6350 | | |
| | 2 ea | One year parts only warranty, standard | | |
| | 2 ea | EWC Four year extended parts only warranty on the compressor (available at time of purchase only) | \$105.00 | \$210.00 |
| | 2 ea | CE mark not available | | |
| | 2 ea | 120v/60/1-ph, 300 watts, 1/4 HP (domestic voltage) standard | | |
| | | | ITEM TOTAL: | \$9,210.00 |
| SUBTOTAL | | | | \$227,545.00 |



WAKELAND HIGH SCHOOL

| | | | | |
|----|------|--|--------------|--------------|
| W1 | 1 ea | QUOTE Master Fabricators Model No. QUOTE Master Fab Quote # 1286 (1/20/2026) Expires: 97/20/2026 Cirilo Counter Collection: Item #101 Serving Line Counter Qty.1 Model #MFC-STL-2640 Consisting of the following: | \$260,252.00 | \$260,252.00 |
| | 1 ea | ITEM # 101 - Closed Base Body · Counter Body Frame to be constructed of 1-1/2" x 1-1/2" x 1/8" galvanized angle iron, run front-to-back at each mullion and fully welded. Welds are to be ground smooth and sprayed with silver enamel paint · Counter body frame to be housed and constructed with 18-gauge #304 Stainless Steel, all fully welded. · 14 Gauge Stainless Steel Top at 36" A.F.F · Dupont Corian Trayslide including stainless steel runners and LED Display Light at 34" A.F.F. - Color Selection By Owner / Architect · Front Finish: Removable Laminate Panels - Color Selection By Owner/Architect · (2) Load Center - All electrical to be pre-wired to load center · (1) 5" x 5" Electrical Chase | | |
| | 2 ea | 101A Master Fabricators Single Tier Clearvista Adjustable Sneeze Guard with 3/8" Full Height Starphire Glass and Mirror Finished | | |

| Item | Qty | Description | Sell | Sell Total |
|------|------|--|-------------|---------------------|
| | | Edge Posts Including (1) Hatco Heat Lamp Model #GRN-72 (By Dealer) over (4) Delfield Single Pan Dry Hot Food Well Model #N8717-DESP (By Dealer) at 36" A.F.F | | |
| | 2 ea | 101B Hatco Heated Merchandiser Model #GR3SDS39-D at 36" A.F.F (By Dealer) | | |
| | 2 ea | 101C Delfield Drop-In Dual Tier Single Pan Per Tier Frost Top with Stainless Steel overshef, Upper Shelf: Frost and Lower Shelf: Frost; Model #N8230-STP (By Dealer) at 36" A.F.F | | |
| | 2 ea | 101D Continental Bar Back Beverage Model #BB50NSSGPT at 36" A.F.F (By Dealer) | | |
| | | · (2) Cash Drawer with removable till tray - Cashier to be integral with counters, lockable cashiers drawers, under shelf to accommodate owners POS System at 36" A.F.F | | |
| | | · (2) 2-1/2" Two-Piece High Polished Chrome Grommet | | |
| | | · (2) 15" Tray Pass | | |
| | | · Stainless Steel Legs with Adjustable Bullet Feet | | |
| | | · Stainless Steel Kickplates | | |
| | | · Counters to be UL and NSF Certified | | |
| | 1 ea | INSTALL Installation to include: | \$18,814.00 | \$18,814.00 |
| | | Site visit for dimensioning, field coordination, delivery of new counters, set-in place installation, completion of all field welds and joints, leveling and final assembly of counters, final utility connections by others | | |
| | 1 ea | NOTE Note: Dealer will coordinate with Master Fabricators on buyout item options such as lead lengths and electrical requirements | | |
| | | This is a quotation on the goods named, subject to the conditions noted below: | | |
| | | 1.) Master Fabricators to fabricate all counters as per approved drawings. | | |
| | | 2.) Lead time is 14 to 16 weeks once all RFIs are closed, field dimensions are completed and final drawings are approved. | | |
| | | 3.) Any additional modifications not stated on this quote will be subject to a revised invoice. | | |
| | | 4.) Counter construction has a 2 year warranty, mechanical compressors have a 5 year warranty | | |
| | | ITEM TOTAL: | | \$279,066.00 |
| W2 | 8 ea | HOT FOOD WELL UNIT, DROP-IN, ELECTRIC | \$1,797.00 | \$14,376.00 |

| Item | Qty | Description | Sell | Sell Total |
|---|------|---|------------|--------------------|
|  | | Delfield Model No. N8717-DESP Drop-In Hot Food Well Unit, Electric, individual pans, wet/dry type with drain & manifold, 1-pan size for 12" x 20" pan, individual digital temperature controls, stainless steel top & wells, galvanized exterior body, (16-7/8" x 25" cutout required), UL, NSF, cUL, CE SKU # 000-AXG14BHK1 | | |
| | 8 ea | Note: If installation of equipment is in Michigan, there is a local code requirement that requires individual drain valves on these models. Please add the accessories as required. | | |
| | 8 ea | 0460000N 1 year parts & labor warranty, standard | | |
| | 8 ea | 208-230v/60/1-ph, 2.4/2.7 amps, 500 watts, standard | | |
| | 8 ea | DRP-DROMIT Omit drain, deduct | | |
| | | ITEM TOTAL: | | \$14,376.00 |
| W3 | 2 ea | FROST TOP / COLD SLAB, DROP IN Delfield Model No. N8232-2CTP Drop In Frost Top R290 Two Tier (2) 18x26 sheet pans Alum top SKU #: 000-AW914NDT2 | \$9,301.00 | \$18,602.00 |
| | 1 ea | 605F1 Single Tier over stainless steel over shelf to match bottom tier | | |
| | 2 ea | 503U (2) 503U - (2) TEMPERED GLASS SNEEZE FRONT | | |
| | 2 ea | DCFSLED (2) DCFSLED - (2) LED LIGHT | | |
| | 2 ea | 0460000N 1 year parts & labor warranty, standard | | |
| | 2 ea | W00003A 5 year compressor warranty (NET priced – no further discount) | \$338.00 | \$676.00 |
| | | ITEM TOTAL: | | \$19,278.00 |
| W4 | 2 ea | HEAT LAMP Hatco Model No. GRN-72 Glo-Ray® Narrow Infrared Strip Heater, 72" L, tubular metal heater rod, single heater rod housing, steel housing in a variety of colors with angle mounting bracket, 1275 watts, cULus, UL EPH Classified, Made in USA | \$475.00 | \$950.00 |
|  | | | | |
| | 1 ea | NOTE: Includes 24/7 parts & service assistance, call 414-671-6350 | | |
| | 2 ea | One year on-site parts & labor warranty, plus one additional year parts only warranty on all Glo-Ray metal sheathed elements | | |
| | 2 ea | 208v/60/1-ph | | |
| | 2 ea | RMB-7G Remote Control Enclosure, (1) infinite switch, (1) indicator light (for 208 volt only) | \$140.00 | \$280.00 |
| | 2 ea | SPECIFY MUST SPECIFY designer color selected from list of standard colors & indicated on order (available at time of | \$40.00 | \$80.00 |

| Item | Qty | Description | Sell | Sell Total |
|------|------|---|--------------------|--------------------|
| | | purchase only) | | |
| | 2 ea | LEADS15 11'-15' Extended Electrical Leads (available at time of purchase only) | \$50.00 | \$100.00 |
| | 2 ea | STANDARD Black designer color, standard (available at time of purchase only) | | |
| | | | ITEM TOTAL: | \$1,410.00 |
| W5 | 2 ea | DISPLAY MERCHANDISER, HEATED, FOR MULTI-PRODUCT | \$5,970.00 | \$11,940.00 |
| | | Hatco Model No. GR3SDS-39D Glo-Ray® Designer Slant Display Warmer, (21) rods, countertop, dual shelf, adjustable thermostat, hardcoated heated base, heated glass shelves, tempered glass side panels, LED display lights, stainless steel or designer colors, 2685 watts, cULus, UL EPH Classified, Made in USA | | |
| | 1 ea | NOTE: Sale of this product must comply with Hatco's Minimum Resale Price Policy; consult order acknowledgement for details | | |
| | 1 ea | NOTE: Includes 24/7 parts & service assistance, call 414-671-6350 | | |
| | 2 ea | One year on-site parts & labor warranty, plus one additional year parts only warranty on all Glo-Ray metal sheathed elements | | |
| | 2 ea | One year parts warranty on Glo-Ray halient ribbon elements against burnout | | |
| | 2 ea | One year parts warranty on heated glass shelves against burnout or breakage | | |
| | 2 ea | 120/208v/60/1-ph, 2685 watts, 12.3 amps, NEMA L14-20P | | |
| | 2 ea | BLACK Black, designer color, body & shelf (available at time of purchase only) | | |
| | | | ITEM TOTAL: | \$11,940.00 |
| W6 | 2 ea | BACKBAR COOLER, FRONT BREATHING | \$9,005.00 | \$18,010.00 |
| | | Continental Refrigerator Model No. BB50NSSSGDPT Refrigerated Back Bar Cooler, pass-thru, 50"W, 34-3/4"H, 16.0 cubic feet, front breathing, stainless steel top, sliding glass doors, electronic controller with digital display & hi-low alarm, stainless steel exterior, stainless steel interior back & side panels with reinforced stainless steel floor, epoxy coated steel shelves, self-contained refrigeration, R290 hydrocarbon refrigerant, 1/4 HP, cETLus, NSF | | |
| | | Verify model number required. Differing spec (Sliding glass doors - BB50NSSSGDPT or hinged glass doors - BB50NSSGDPT) | | |
| | 2 ea | Standard warranty (for the United States & Canada Only): 7 year parts, labor, and compressor | | |
| | 2 ea | 115v/60/1-ph, 3.7 amps, cord, NEMA 5-15P, standard | | |
| | 2 ea | Condensing unit on the left, standard | | |
| | 2 ea | 50203-4 Set of 4 stainless steel legs, 6" | \$115.00 | \$230.00 |
| | | | ITEM TOTAL: | \$18,240.00 |



| Item | Qty | Description | Sell | Sell Total |
|-----------------|-----|-------------|-------|--------------|
| SUBTOTAL | | | | \$344,310.00 |
| | | | Total | \$571,855.00 |

TERMS AND CONDITIONS

Pricing good for order placed by July 2026, completion of projects by December 2026.

Please verify final pricing at time of purchase order issuance. Any changes to the purchase order that differ from the quote may invalidate the pricing.

Prices quoted are per standard manufacturer specifications and do not include any accessories or options unless they are listed as line items in the quote above.

Changes to delivery location or need-by date after purchase order has been placed may result in additional freight or reconsignment charges.

Receiving your goods:

- **REFUSE any items that appear to be damaged or have significantly broken cartons and note refusal on bill of lading. Please document any visible damage with photographs and email them to orders@pascoinc.net.**
- Mark any discrepancies in quantity on the freight bill, along with any minor packaging or pallet damage. Please mark this SUBJECT TO FURTHER INSPECTION OR DAMAGE NOTED.
 - **You must notify PASCO of any shortages or damage as we do not receive copies of the proof of delivery unless requested. Discrepancies or damage must be reported within 48 hours of receipt on order to file a freight claim. Some manufacturers/freight lines will require customer assistance with freight claims. We apologize for any inconvenience this might cause. It will also help if pictures of the damage can be taken and sent to orders@pascoinc.net when reporting.**

If an installation component was quoted, Pasco's standard scope of installation is inside delivery, uncrate, and set in place. Removal of existing equipment and utility connections (electrical, mechanical, and plumbing) to be performed by others unless otherwise noted in the body of the quote.

If your product comes with a warranty, please be sure to register your product either online at the manufacturer's website or on the warranty card that may be packed in with the equipment. This will allow service agencies to complete warranty requests in a timely manner. If you need assistance in determining how to register your product, please contact us at info@pascoinc.net. Any service work related to warranty is performed by the manufacturer's local service agent in your area. To find a service agent, please visit the manufacturer's website and look for a service page. Pasco does not perform any service work and will not be responsible for any non-warranty work payments from service agents.

Invoicing: If there are multiple manufacturers on your order, please note that you may receive multiple invoices as we invoice as each manufacturer ships their items. Pasco will invoice as items ship and due to current lead times payment cannot be held until a purchase order has been

completely filled.

Payment: Terms are set between customer and Pasco accounting. Acceptable forms of payment are Check or ACH.

- Credit card payments are subject to revision of invoice to add a 4.5% convenience fee.

Returns: No returns will be accepted after 15 days of receipt of goods, barring extenuating circumstances. Please note that restock fees and return freight fees may apply. Please email your sales representative should you need to initiate the return process.