



# BRISTOL PUBLIC SCHOOLS – MASTERPLAN UPDATE

FACILITY STUDY UPDATE | CITY OF BRISTOL | APRIL 29, 2020



Operational Effectiveness and  
Excellence  
***Facility Recommendations and  
Opportunities***

# Rationale

- Building needs call for a comprehensive facilities plan that ensures students meet clear and challenging expectations through personalized learning experiences in well-appointed schools
- Utilization of space in grades pre-K - 8 must better support student learning **that is informed by current and projected enrollment**
- Predicted **enrollment** requires BPS to adjust the cost structures of its system

## Three principles to guide decisions moving forward in reimagining BPS :

- Great Teaching & Learning in Every School
- Equitable School Facilities and Access to Innovative Pathways
- Fiscal Sustainability

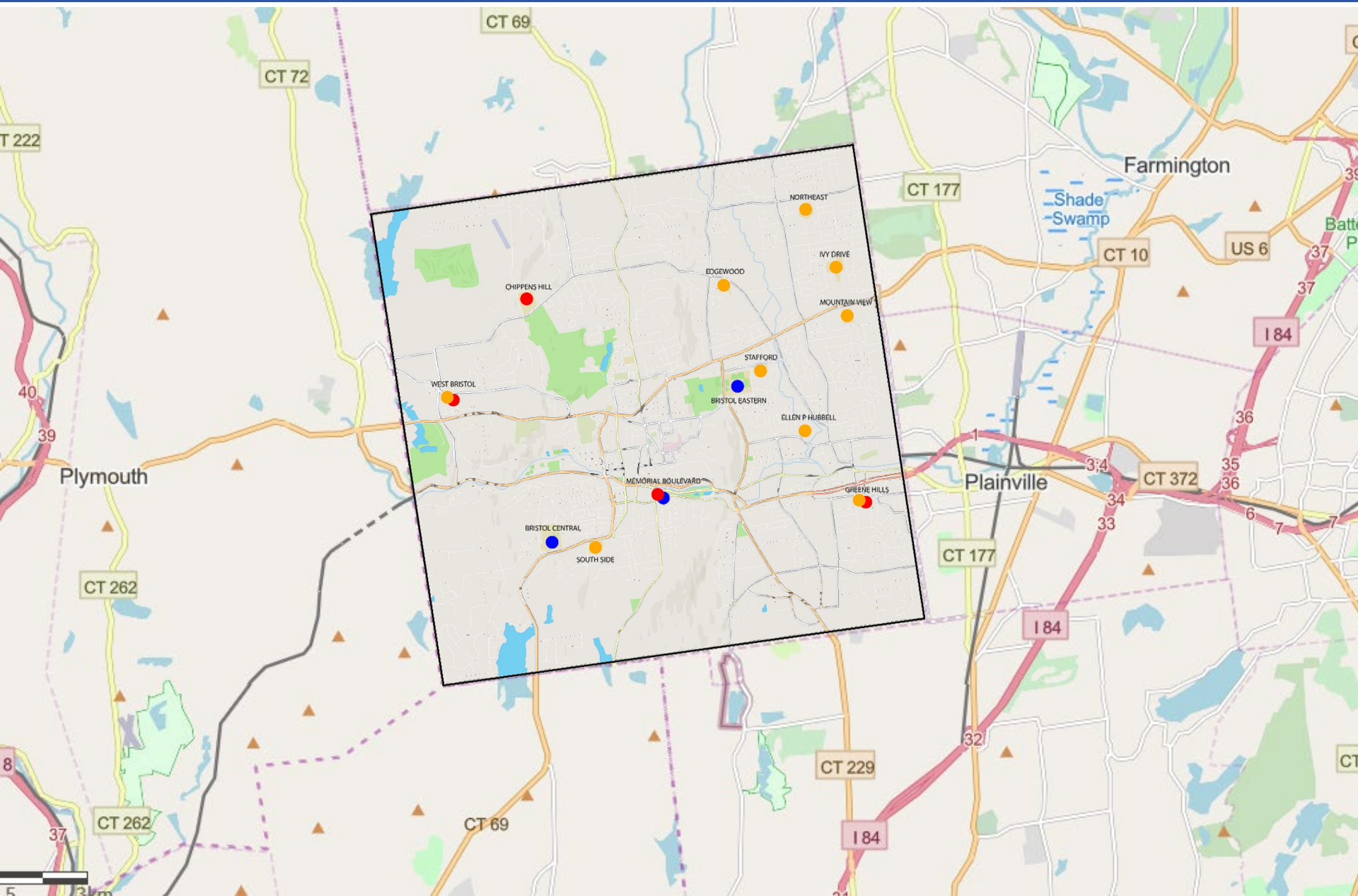
# Intended Goals and Outcomes:

- Ensures equity for all students to attend well-appointed and safe schools
- Sustainably sized and structured school district that ensures equity through consideration of demographics and socio-economic status
- Improved operational efficiency
- Improved instructional conditions for all students and staff
- Expand opportunities for teachers to collaborate in teams and departments to ensure equitable and high quality instruction
- Operate schools that are fiscally responsible
- Consistently applied grade configurations aligned to an educational philosophy

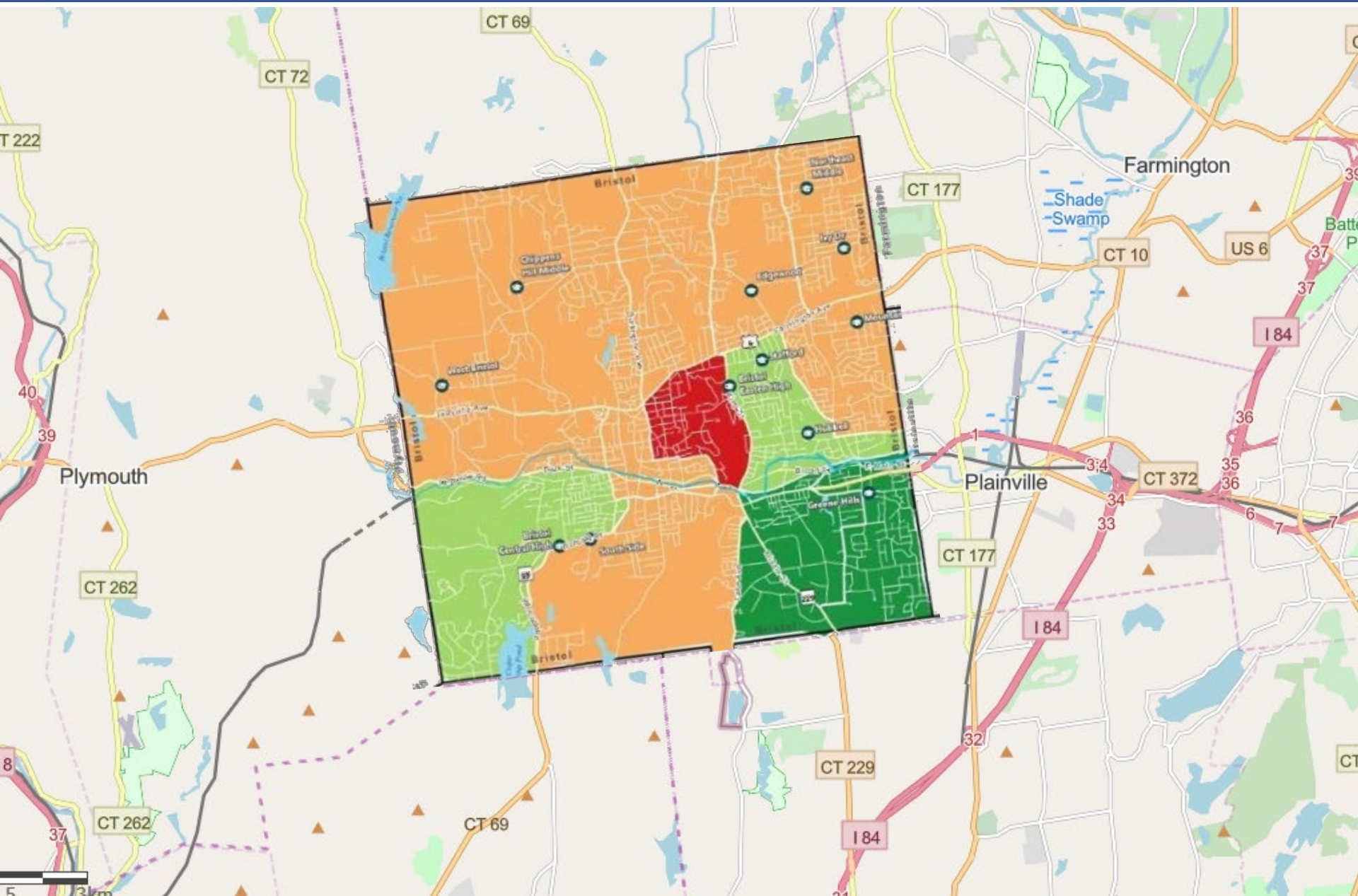
# Reimagining BPS 2023 Goals as Guiding Questions

- Which model will ensure equity for 100% of our BPS scholars to attend well-appointed and safe schools?
- Which model will best sustain future enrollment predictions and improve operational efficiency?
- Which model has the greatest potential to improve teacher collaboration across grade levels, subject areas and disciplines to maximize learning outcomes?
- Which model best ensures all schools utilize and maximize instructional spaces and staffing considerations?
- Which model best serves all students with a consistent philosophy of high quality education, addresses students' plane of development, and reflects the demographics of the entire district community?

# Bristol Public Schools

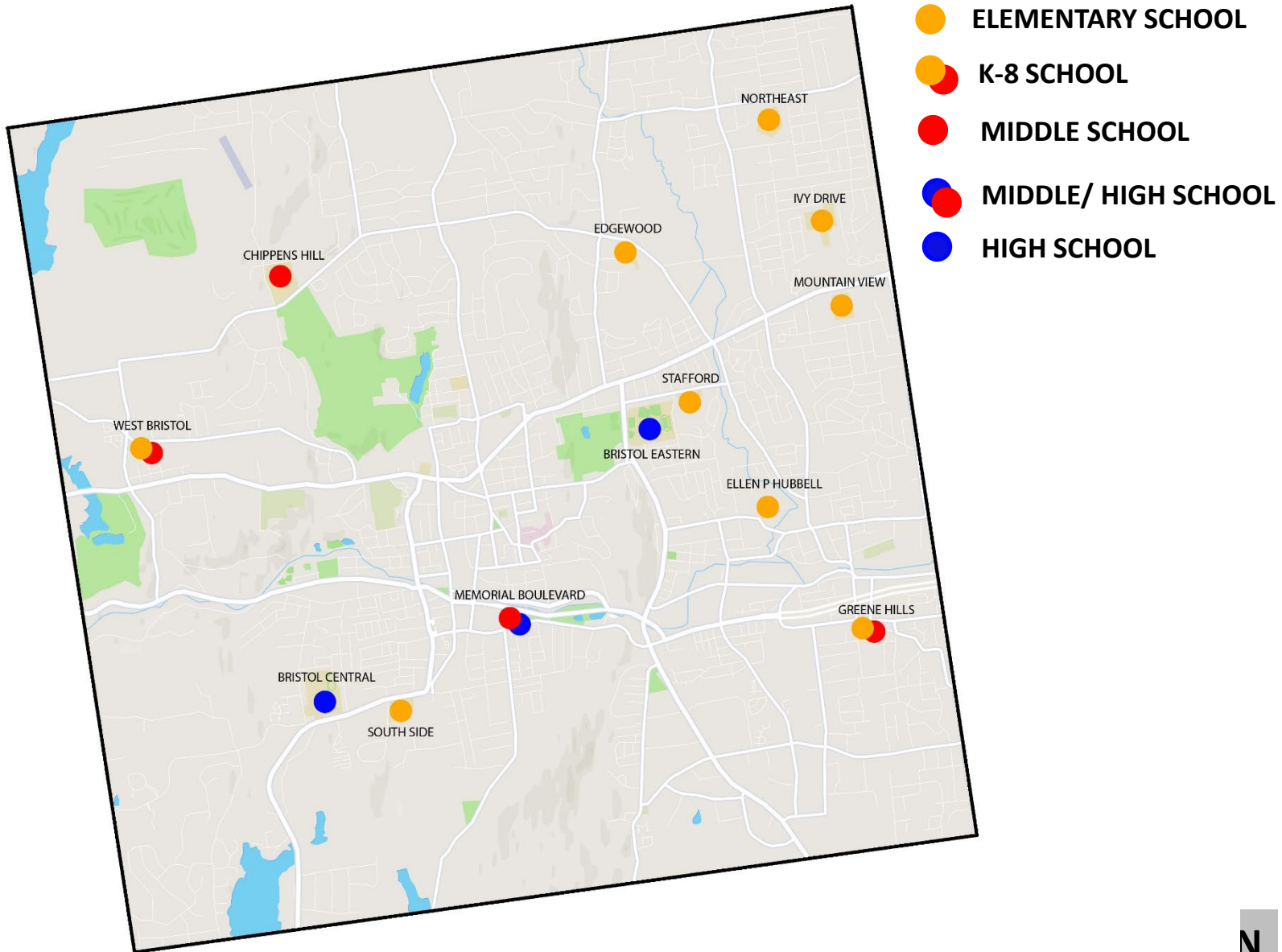


# Bristol Public Schools - DISTRICTS





# Bristol Public Schools – Current Configuration



# Edgewood Elementary School – Site 16.5 Ac



# Edgewood Elementary School

## BUILDING INFORMATION

K-5 SCHOOL

ENROLLMENT 2019-20

286

YEAR BUILT / RENOVATIONS

1957/1992

NUMBER OF CLASSROOMS

18

SITE ACREAGE

16.5 AC

BUILDING AREA

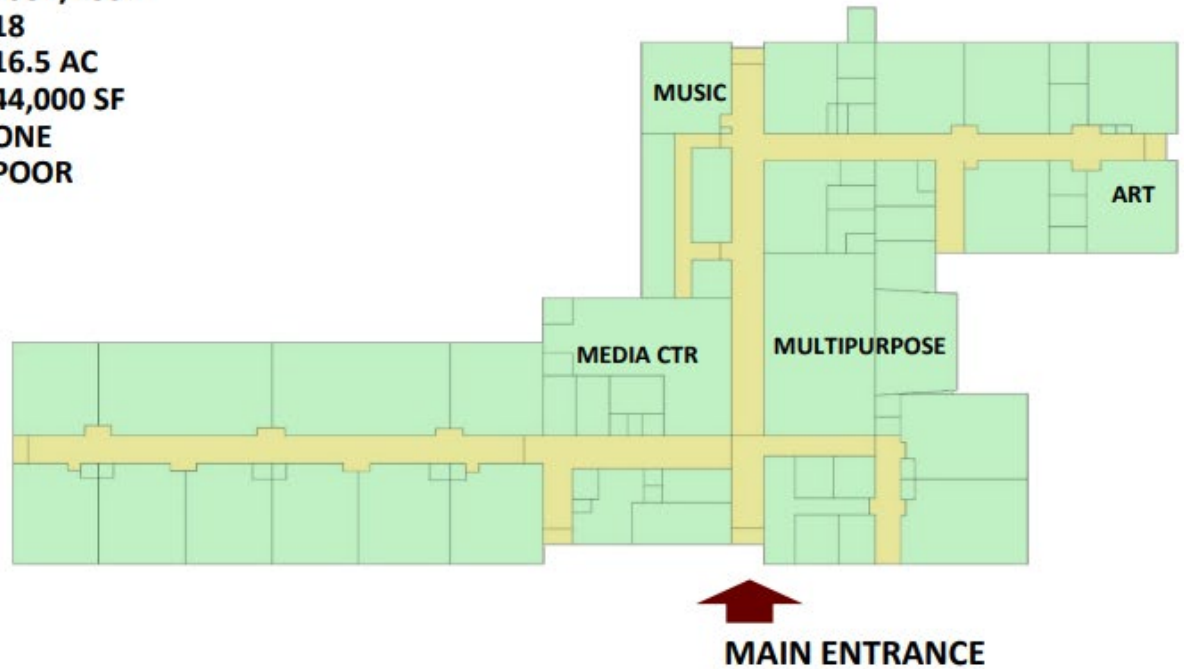
44,000 SF

NUMBER OF FLOORS

ONE

CONDITION

POOR



**FIRST FLOOR PLAN**

# Greene-Hills PK-8 School – Site 17.9 Ac

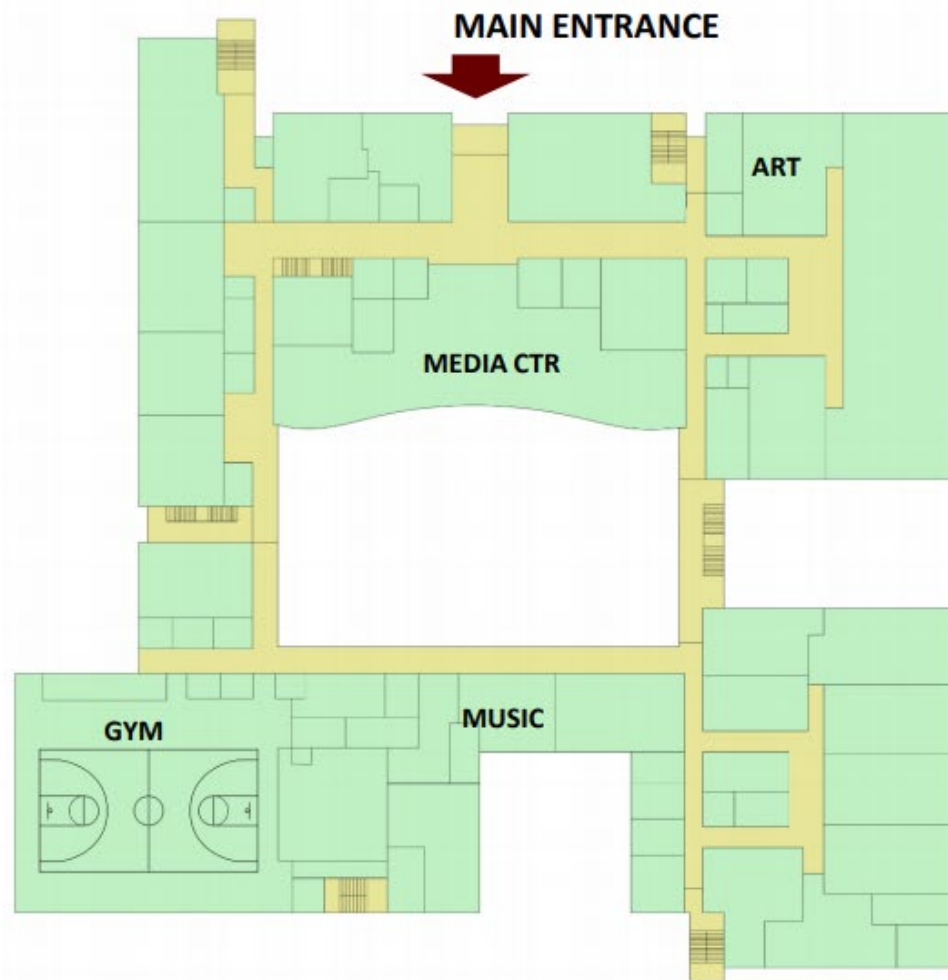


# Greene-Hills PK-8 School

## BUILDING INFORMATION

### PK-8 SCHOOL

|                          |           |
|--------------------------|-----------|
| ES ENROLLMENT 2019-20    | 597       |
| MS ENROLLMENT 2020-21    | 338       |
| YEAR BUILT / RENOVATIONS | 2012      |
| NUMBER OF ES CLASSROOMS  | 28        |
| NUMBER OF MS CLASSROOMS  | 16        |
| SITE ACREAGE             | 17.9 AC   |
| BUILDING AREA            | 122,000   |
| NUMBER OF FLOORS         | TWO       |
| CONDITION                | EXCELLENT |



**FIRST FLOOR PLAN**

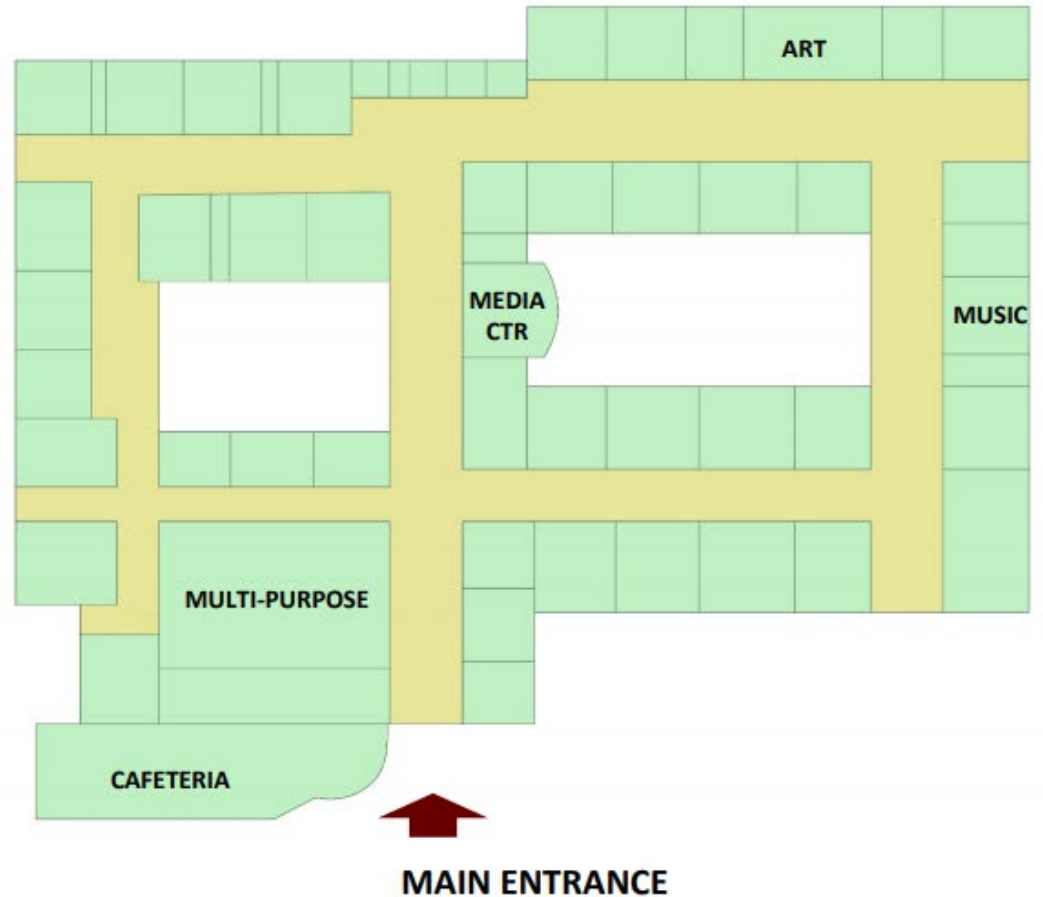
# Hubbell Elementary School – Site 20.2 Ac



# Hubbell Elementary School

## BUILDING INFORMATION

|                          |           |
|--------------------------|-----------|
| PK-5 SCHOOL              |           |
| ENROLLMENT 2019-20       | 381       |
| YEAR BUILT / RENOVATIONS | 1961/1992 |
| NUMBER OF CLASSROOMS     | 23        |
| SITE ACREAGE             | 20.2 AC   |
| BUILDING AREA            | 63,000 SF |
| NUMBER OF FLOORS         | ONE       |
| CONDITION                | GOOD      |



# Ivy Drive Elementary School – Site 39.2 Ac





# Ivy Drive Elementary School

## BUILDING INFORMATION

|                          |           |
|--------------------------|-----------|
| PK-5 SCHOOL              |           |
| ENROLLMENT 2019-20       | 350       |
| YEAR BUILT / RENOVATIONS | 1967/2007 |
| NUMBER OF CLASSROOMS     | 21        |
| SITE ACREAGE             | 39.2 AC   |
| BUILDING AREA            | 59,000 SF |
| NUMBER OF FLOORS         | ONE       |
| CONDITION                | EXCELLENT |



**MAIN ENTRANCE**

**FIRST FLOOR PLAN**

# Mountain View Elementary School – Site 11.3 Ac



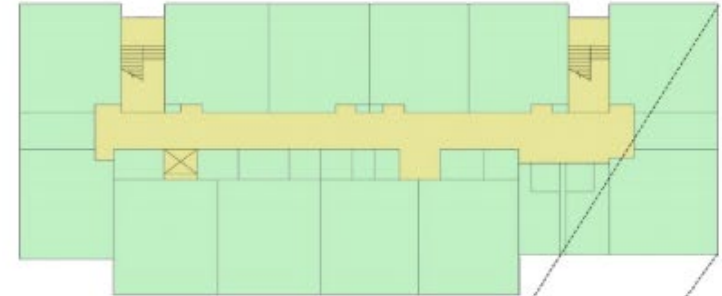
# Mountain View Elementary School

## BUILDING INFORMATION

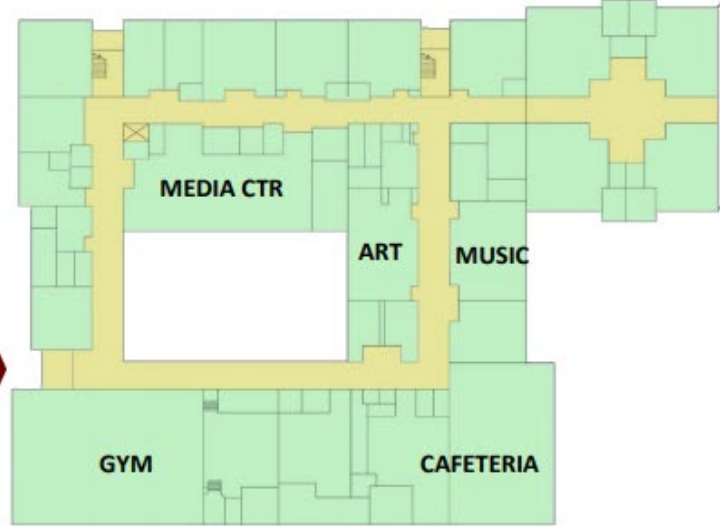
|                          |           |
|--------------------------|-----------|
| K-5 SCHOOL               |           |
| ENROLLMENT 2019-20       | 316       |
| YEAR BUILT / RENOVATIONS | 1967/2007 |
| NUMBER OF CLASSROOMS     | 19        |
| SITE ACREAGE             | 11.3 AC   |
| BUILDING AREA            | 53,000 SF |
| NUMBER OF FLOORS         | TWO       |
| CONDITION                | EXCELLENT |



**SITE PLAN**



**SECOND FLOOR PLAN**



**FIRST FLOOR PLAN**

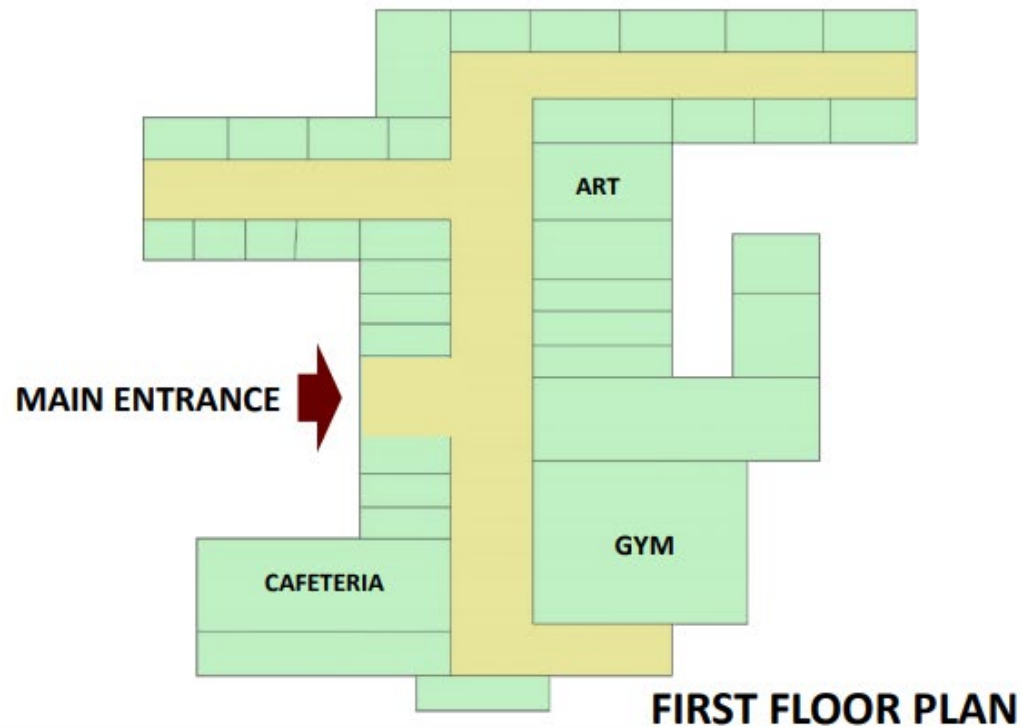
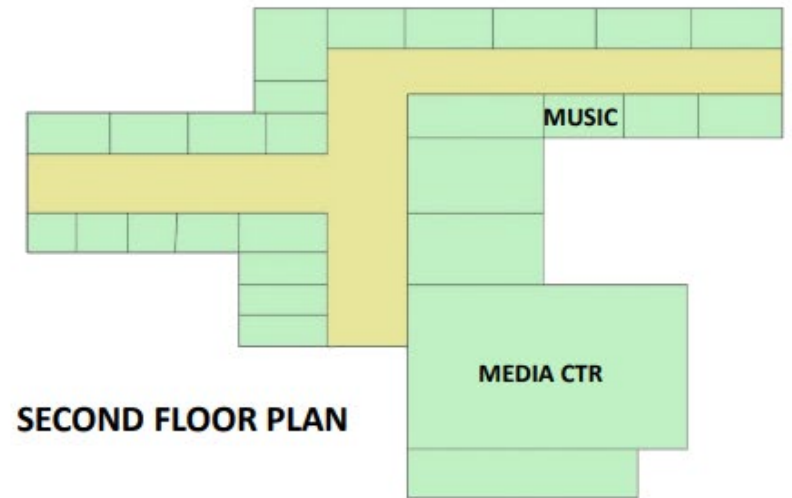
# South Side Elementary School – Site 15.5 Ac



# South Side Elementary School

## BUILDING INFORMATION

|                          |           |
|--------------------------|-----------|
| PK-5 SCHOOL              |           |
| ENROLLMENT 2019-20       | 452       |
| YEAR BUILT / RENOVATIONS | 1973/2016 |
| NUMBER OF CLASSROOMS     | 26        |
| SITE ACREAGE             | 15.5 AC   |
| BUILDING AREA            | 61,000 SF |
| NUMBER OF FLOORS         | TWO       |
| CONDITION                | FAIR      |



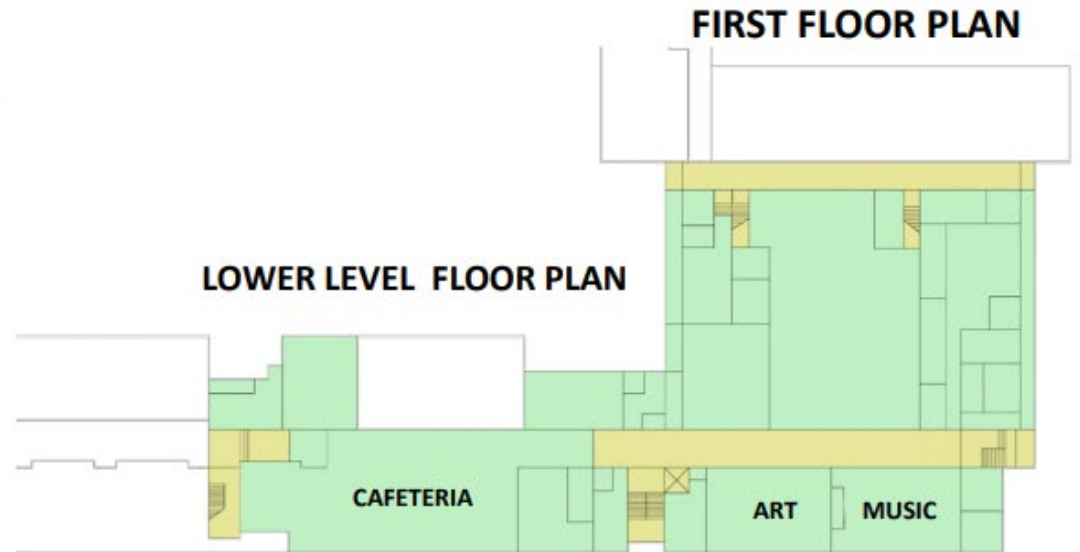
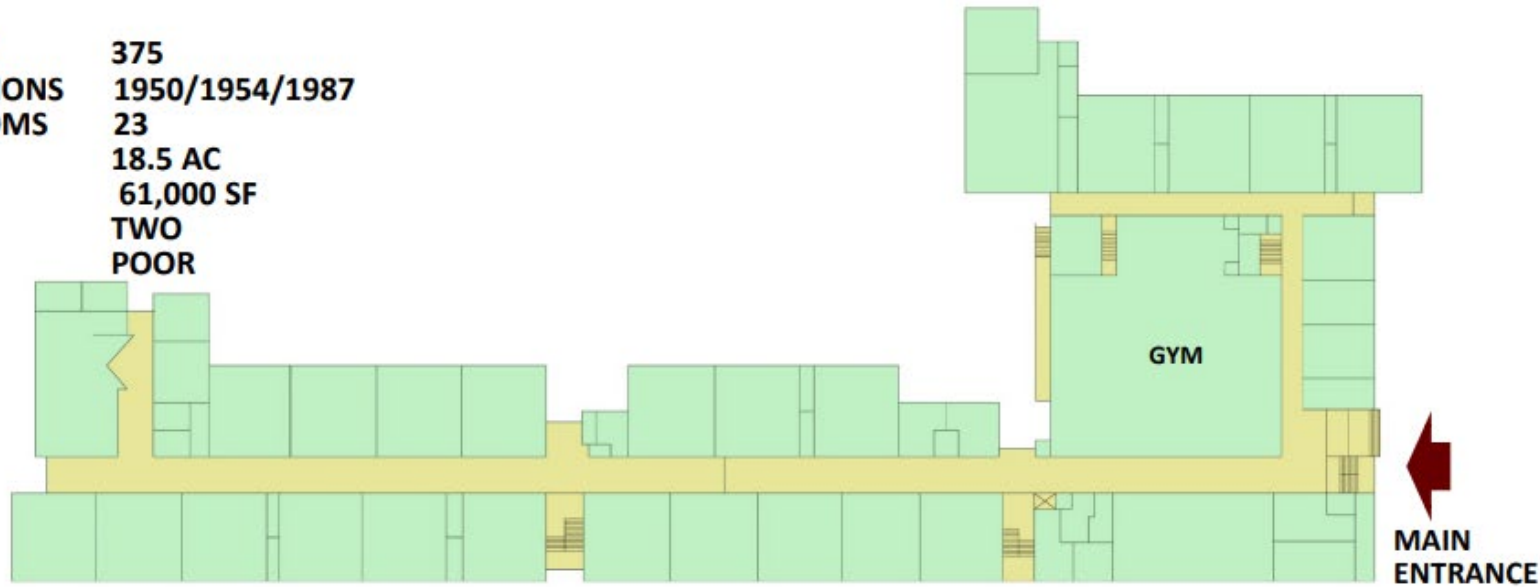
# Stafford Elementary School – Site 18.5 Ac



# Stafford Elementary School

## BUILDING INFORMATION

|                          |                |
|--------------------------|----------------|
| K-5 SCHOOL               |                |
| ENROLLMENT 2019-20       | 375            |
| YEAR BUILT / RENOVATIONS | 1950/1954/1987 |
| NUMBER OF CLASSROOMS     | 23             |
| SITE ACREAGE             | 18.5 AC        |
| BUILDING AREA            | 61,000 SF      |
| NUMBER OF FLOORS         | TWO            |
| CONDITION                | POOR           |



# West Bristol K-8 School – Site 28.6 Ac

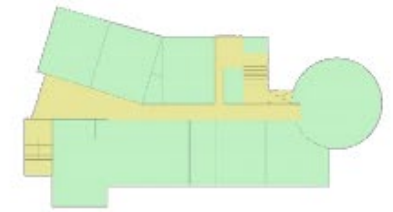




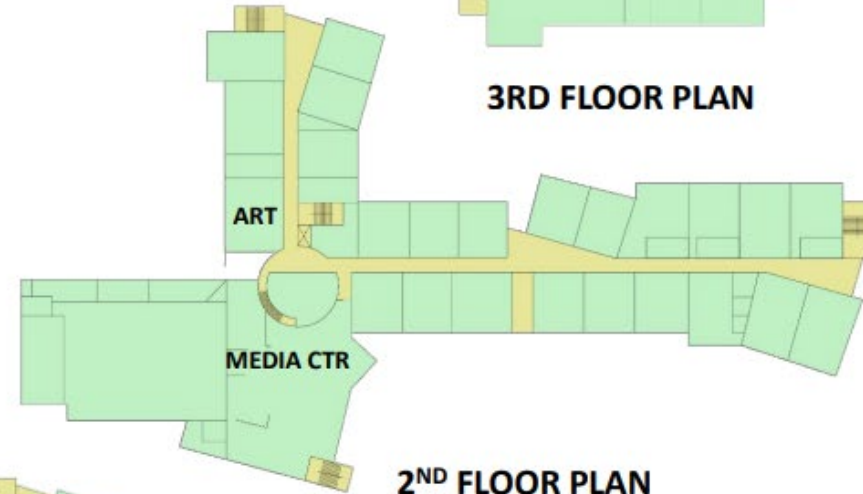
# West Bristol K-8 School – Site 28.6 Ac

## BUILDING INFORMATION

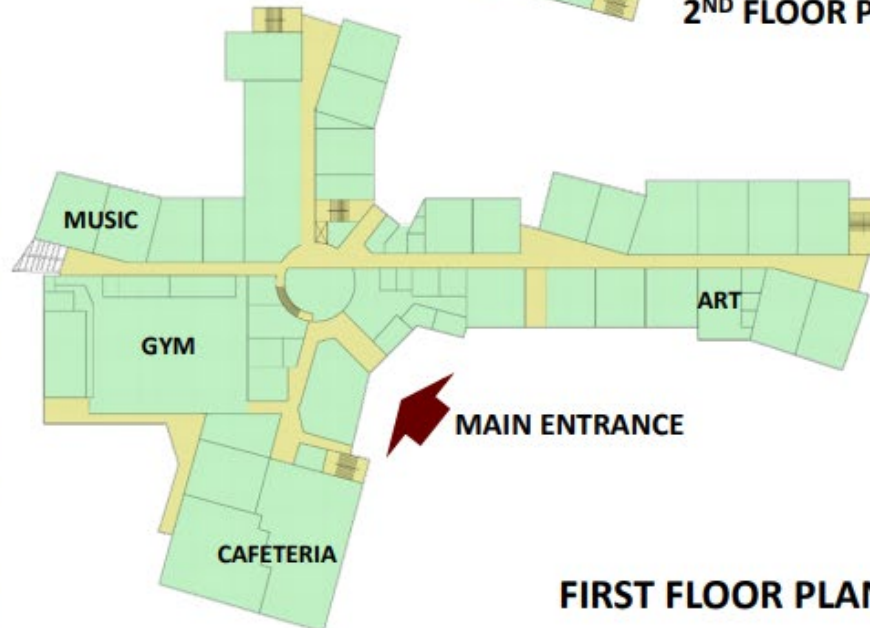
|                          |            |
|--------------------------|------------|
| K-8 SCHOOL               |            |
| ES ENROLLMENT 2019-20    | 608        |
| MS ENROLLMENT 2020-21    | 312        |
| YEAR BUILT / RENOVATIONS | 2012       |
| NUMBER OF ES CLASSROOMS  | 28         |
| NUMBER OF MS CLASSROOMS  | 13         |
| SITE ACREAGE             | 28.6 AC    |
| BUILDING AREA            | 122,000 SF |
| NUMBER OF FLOORS         | THREE      |
| CONDITION                | EXCELLENT  |



3RD FLOOR PLAN



2<sup>ND</sup> FLOOR PLAN



FIRST FLOOR PLAN



# Chippens Hill MS 6-8 School – Site 23.9 Ac



# Chippens Hill MS 6-8 School – Site 23.9 Ac

## BUILDING INFORMATION

6-8 SCHOOL

MS ENROLLMENT 2020-21

YEAR BUILT / RENOVATIONS

NUMBER OF MS CLASSROOMS

SITE ACREAGE

BUILDING AREA

NUMBER OF FLOORS

CONDITION

746

1993

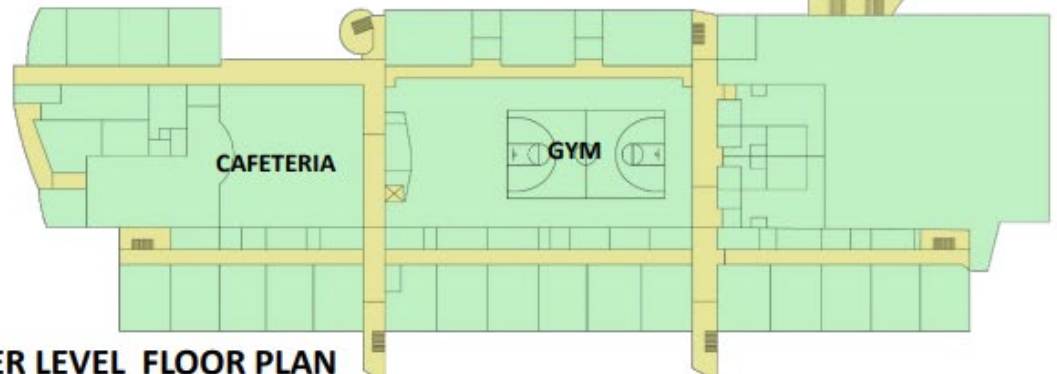
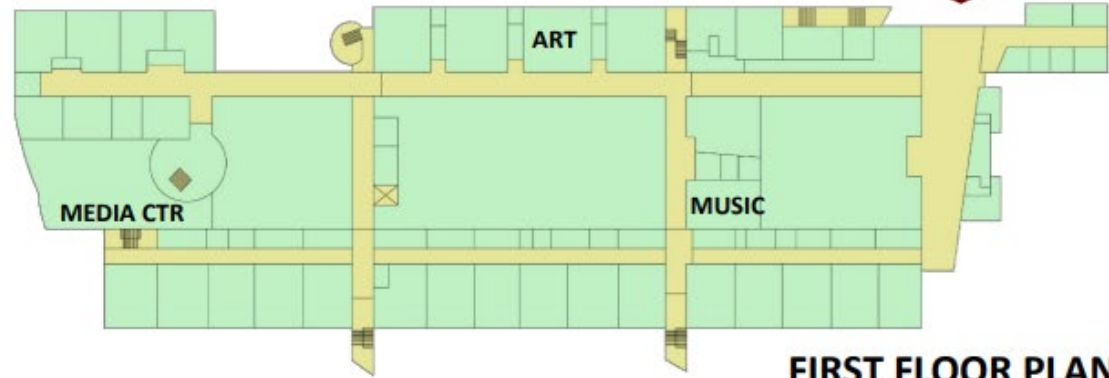
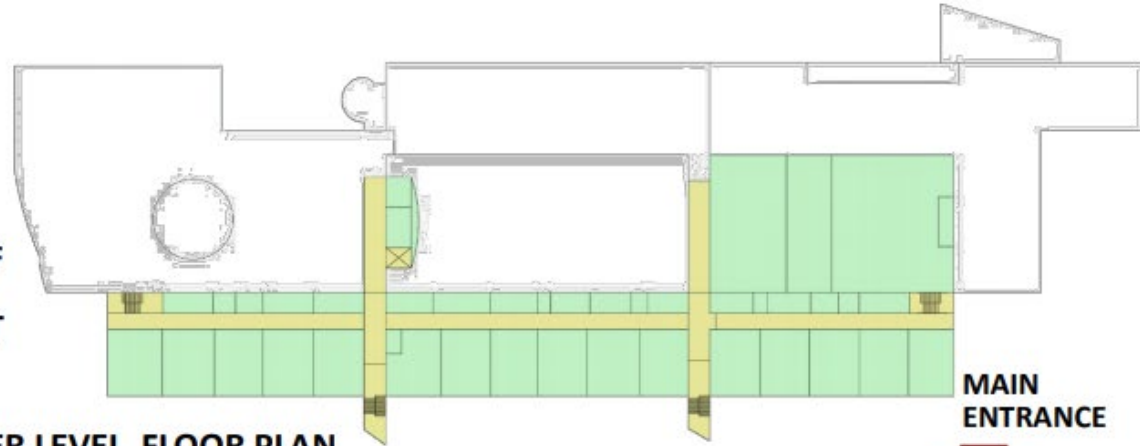
44

23.9 AC

166,000 SF

THREE

EXCELLENT



# Northeast MS 6-8 School – Site 23.8 Ac



# Northeast MS 6-8 School

## BUILDING INFORMATION

6-8 SCHOOL

MS ENROLLMENT 2020-21

432

YEAR BUILT / RENOVATIONS

1961/1983/2017

NUMBER OF MS CLASSROOMS

21

SITE ACREAGE

23.8 AC

BUILDING AREA

74,000 SF

NUMBER OF FLOORS

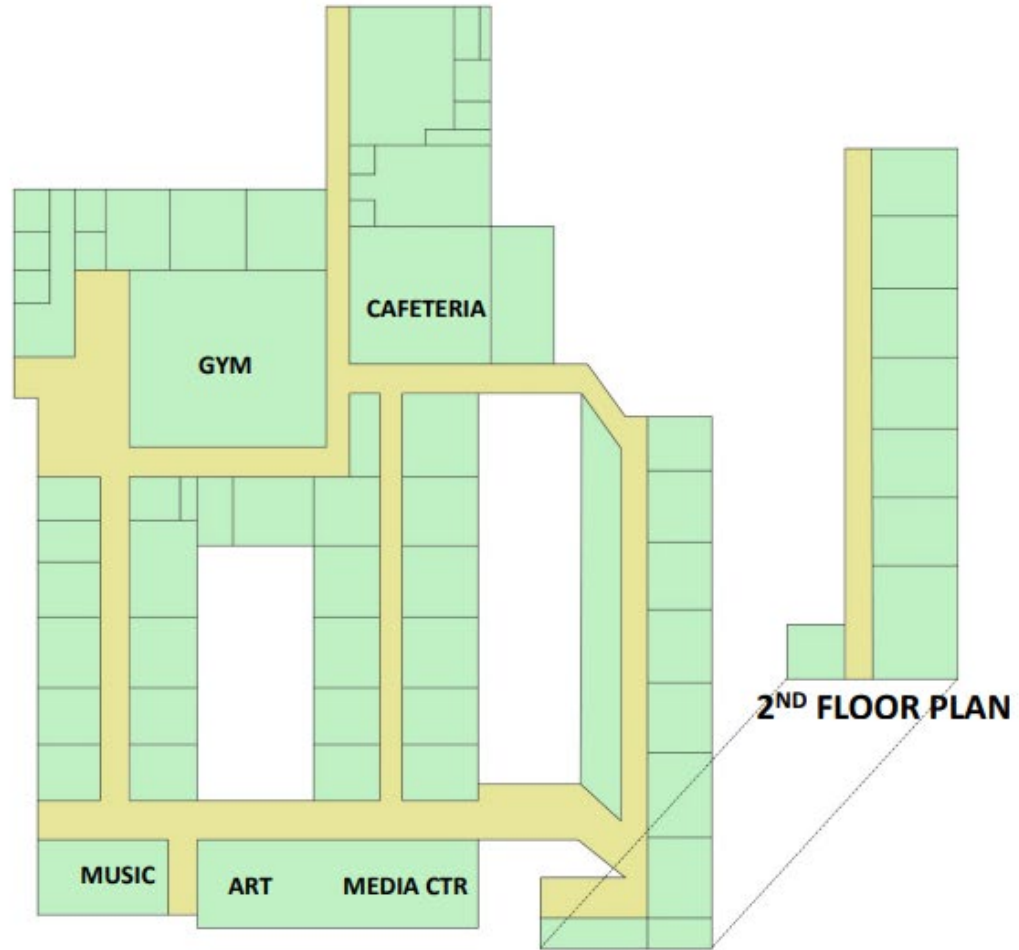
Two

CONDITION

POOR



MAIN  
ENTRANCE



**FIRST FLOOR PLAN**

# STUDY CRITERIA

SCHOOL CAPACITY / SIZE – Size of Learning Communities

UTILIZATION / EFFICIENCY PERCENTAGE – 85 to 90 Percent

STUDENTS PER CLASSROOM – Based on BOE Policy

ENROLLMENT PROJECTIONS – Based on High Projections

SITE ADEQUACY – Space Available for Expansion

BUILDING CONDITION – Building & Systems Integrity and Useful Life

EDUCATIONAL PARITY – Based on Size, Conditions & Amenities

SCHOOL TRANSITIONS – Number of Transitions

CONSTRUCTION PHASING – Overall Phased Implementation of Approach

DISRUPTION TO EDUCATION – Swing Space

COST OF MODIFICATIONS – Construction Cost

ENERGY COST & SAVINGS

BUILDING MAINTENANCE COST & SAVINGS

TRANSPORTATION

OPERATIONAL COST & SAVINGS

# Enrollment Projections – Districtwide High

## High Districtwide Projections

| School Year | Birth Year | Births | K   | 1   | 2   | 3   | 4   | 5   | 6   | 7   | 8   | 9   | 10  | 11  | 12  | PK  | Total PK-12 | Total K-12 | Total K-5 | Total 6-8 | Total 9-12 |
|-------------|------------|--------|-----|-----|-----|-----|-----|-----|-----|-----|-----|-----|-----|-----|-----|-----|-------------|------------|-----------|-----------|------------|
| 2019-20     | 2014       | 669    | 580 | 490 | 565 | 579 | 600 | 568 | 587 | 649 | 640 | 703 | 556 | 586 | 588 | 285 | 7,976       | 7,691      | 3,382     | 1,876     | 2,433      |
| 2020-21     | 2015       | 645    | 565 | 583 | 495 | 572 | 599 | 611 | 569 | 612 | 659 | 659 | 654 | 552 | 611 | 305 | 8,046       | 7,741      | 3,425     | 1,840     | 2,476      |
| 2021-22     | 2016       | 595    | 521 | 568 | 589 | 501 | 591 | 610 | 612 | 593 | 621 | 678 | 614 | 649 | 576 | 305 | 8,028       | 7,723      | 3,380     | 1,826     | 2,517      |
| 2022-23     | 2017       | 633    | 555 | 524 | 574 | 597 | 518 | 602 | 611 | 638 | 602 | 639 | 631 | 609 | 677 | 305 | 8,082       | 7,777      | 3,370     | 1,851     | 2,556      |
| 2023-24     | 2018       | 610    | 534 | 558 | 529 | 581 | 617 | 527 | 603 | 637 | 648 | 619 | 595 | 626 | 635 | 305 | 8,014       | 7,709      | 3,346     | 1,888     | 2,475      |
| 2024-25     | 2019       | 614    | 538 | 537 | 564 | 536 | 601 | 628 | 528 | 628 | 647 | 667 | 576 | 590 | 653 | 305 | 7,998       | 7,693      | 3,404     | 1,803     | 2,486      |
| 2025-26     | 2020       | 637    | 558 | 541 | 542 | 571 | 554 | 612 | 629 | 550 | 637 | 666 | 621 | 571 | 615 | 305 | 7,972       | 7,667      | 3,378     | 1,816     | 2,473      |
| 2026-27     | 2021       | 634    | 555 | 561 | 546 | 549 | 590 | 564 | 613 | 655 | 558 | 655 | 620 | 616 | 596 | 305 | 7,983       | 7,678      | 3,365     | 1,826     | 2,487      |
| 2027-28     | 2022       | 632    | 554 | 558 | 567 | 553 | 568 | 601 | 565 | 639 | 665 | 574 | 610 | 615 | 642 | 305 | 8,016       | 7,711      | 3,401     | 1,869     | 2,441      |
| 2028-29     | 2023       | 630    | 552 | 557 | 564 | 574 | 572 | 578 | 602 | 589 | 649 | 684 | 534 | 605 | 641 | 305 | 8,006       | 7,701      | 3,397     | 1,840     | 2,464      |
| 2029-30     | 2024       | 630    | 552 | 555 | 563 | 571 | 594 | 582 | 579 | 627 | 598 | 668 | 637 | 530 | 631 | 305 | 7,992       | 7,687      | 3,417     | 1,804     | 2,466      |

Source: Bristol Public Schools 2019-20, CT Dept. of Public Health, MMI Projections 2020-21 - 2029-30. Pre-K projections based on 5-year average, subject to change because of funding and availability.

**PK Enrollment 305 Starting in 2021**  
**K-5 Enrollment 3,425 in 2020-21**  
**6-8 Enrollment 1,888 in 2023-24**  
**9-12 Enrollment 2,556 in 2022-23**

# Grade Configuration Option 1

## Pre K Specialization, K-4, 5-8, 9-12

Highest Enrollment Projections 2814 K-4 Students and 2415 5-8 Students – PK Enrollment 305

### EDGEWOOD ES

GREENE-HILLS K-8

HUBBELL ES

IVY DRIVE ES

MOUNTAIN VIEW ES

SOUTH SIDE ES

### STAFFORD ES

WEST BRISTOL K-8

### REPURPOSE

CONVERT TO A 5-8

K-4 ES

K-4 ES

K-4 ES

K-4 ES

### REPURPOSE

CONVERT TO A K-4

### Repurpose / Close

Minor Interior Modifications

Add Classrooms

Add Classrooms

Add Classrooms

Update Facility – Major Renovations

### Repurpose for BOE & Alt Education

Minimal Modifications

CHIPPENS HILL

5-8 MS

Minimal Modifications

GREENE-HILLS

5-8 MS

Minor Interior Modifications

NORTHEAST

5-8 MS

Update Facility & Add PK Center

MBIAMS

5-8 & 9-12

New School to Accommodate 5-8

- ❖ Parity at K-4 Schools with 5 Classrooms per grade level and a capacity of 574 at 100% Utilization, with the exception of West Bristol with 7 Classrooms per grade level and a capacity of 805 at 100%
- ❖ New Pre Kindergarten Center at Northeast Site or Edgewood with the option of full day PK
- ❖ Parity at 5-8 Schools with 2 Teams per grade level and a capacity of 768 at 100% Utilization and 1 Team per grade level at the Arts Magnet



# Grade Configuration Option 2

## Pre K Specialization, K-5, 6-8, 9-12

Highest Enrollment Projections 3,425 K-5 Students and 1,888 6-8 Students – PK Enrollment 305

|                    |                   |  |
|--------------------|-------------------|--|
| EDGEWOOD ES        | PK CENTER         | Renovate for PK Center                       |
| GREENE-HILLS K-8   | REMAINS K-5 & 6-8 | Unchanged                                    |
| HUBBELL ES         | K-5 ES            | Add Classrooms                               |
| IVY DRIVE ES       | K-5 ES            | Unchanged                                    |
| MOUNTAIN VIEW ES   | K-5 ES            | Add Classrooms                               |
| SOUTH SIDE ES      | K-5 ES            | Update Facility – Major Renovations          |
| <b>STAFFORD ES</b> | <b>REPURPOSE</b>  | <b>Repurpose for BOE &amp; Alt Education</b> |
| WEST BRISTOL K-8   | REMAINS K-5 & 6-8 | Unchanged                                    |
| CHIPPENS HILL      | 6-8 MS            | Unchanged                                    |
| GREENE-HILLS K-8   | REMAINS K-5 & 6-8 | Unchanged                                    |
| NORTHEAST          | 6-8 MS            | Update Facility                              |
| WEST BRISTOL K-8   | REMAINS K-5 & 6-8 | Unchanged                                    |
| MBIAMS             | 6-8 & 9-12        | New School to Accommodate 6-8                |

- ❖ The K-5 Schools range from 3 to 5 Classrooms per grade level and capacities ranging from 414 to 690 at 100% Utilization.
- ❖ New Pre Kindergarten Center at Edgewood with the option of full day PK – Option at Chippens Hill
- ❖ The 6-8 Schools with 2 Teams per grade level at Northeast and Chippens Hill and 1 team per grade level at West Bristol, Greene-Hills and the Arts Magnet

# Grade Configuration Option 3

## Pre K Specialization Mixed K-8 and 9-12

Highest Enrollment Projections 3,425 K-5 Students and 1,888 6-8 Students – PK Enrollment 305

### EDGEWOOD ES

GREENE-HILLS K-8  
HUBBELL ES  
IVY DRIVE ES  
MOUNTAIN VIEW ES  
SOUTH SIDE ES  
STAFFORD ES  
WEST BRISTOL K-8

### REPURPOSE

REMAINS K-5 & 6-8  
K-5 ES  
K-5 ES  
K-5 ES  
K-5 ES  
K-5 ES  
REMAINS K-5 & 6-8

### Repurpose for BOE/Adult Ed / Close

Unchanged  
Add Classrooms  
Add Classrooms  
Add Classrooms  
Update Facility – Major Renovations  
Update Facility with Addition  
Unchanged

CHIPPENS HILL  
GREENE-HILLS K-8  
NORTHEAST  
WEST BRISTOL K-8  
MBIAMS

6-8 MS  
REMAINS K-5 & 6-8  
6-8 MS  
REMAINS K-5 & 6-8  
6-8 & 9-12

Unchanged – Potential Location for PK  
Unchanged  
Update Facility & Add PK  
Unchanged  
New School to Accommodate 6-8

- ❖ Parity at K-5 Schools with 4 Classrooms per grade level and a capacity of 552 at 100% Utilization.
- ❖ New Pre Kindergarten Center at Northeast Site with the option of full day PK
- ❖ The 6-8 Schools with 2 Teams per grade level at Northeast and Chippens Hill and 1 team per grade level at West Bristol, Greene-Hills and the Arts Magnet

# Grade Configuration Option 4

## Mixed PK-8 and 9-12

Highest Enrollment Projections 3,425 K-5 Students and 1,888 6-8 Students – PK Enrollment 305

### EDGEWOOD ES

GREENE-HILLS K-8  
HUBBELL ES  
IVY DRIVE ES  
MOUNTAIN VIEW ES  
SOUTH SIDE ES  
STAFFORD ES  
WEST BRISTOL K-8

### REPURPOSE

REMAINS PK-5 & 6-8  
PK-5 ES  
PK-5 ES  
K-5 ES  
PK-5 ES  
K-5 ES  
REMAINS K-5 & 6-8

### Repurpose / Close

Unchanged  
Add Classrooms  
Unchanged  
Add Classrooms  
Update Facility – Major Renovations  
Update Facility with Addition  
Unchanged

CHIPPENS HILL  
GREENE-HILLS K-8  
NORTHEAST  
WEST BRISTOL K-8  
MBIAMS

6-8 MS  
REMAINS K-5 & 6-8  
6-8 MS  
REMAINS K-5 & 6-8  
6-8 & 9-12

Unchanged – Potential Location for PK  
Unchanged  
Update Facility  
Unchanged  
New School to Accommodate 6-8

- ❖ Elementary Schools with 4 Classrooms per grade level and capacities ranging from 552 to 603 at 100% Utilization, except for Ivy Drive with 3 Classrooms per grade.
- ❖ Pre Kindergarten Classrooms at multiple schools
- ❖ The 6-8 Schools with 2 Teams per grade level at Northeast and Chippens Hill and 1 team per grade level at West Bristol, Greene-Hills and the Arts Magnet

# Reimagining BPS 2023 Goals as Guiding Questions

- Which model will ensure equity for 100% of our BPS scholars to attend well-appointed and safe schools?
- Which model will best sustain future enrollment predictions and improve operational efficiency?
- Which model has the greatest potential to improve teacher collaboration across grade levels, subject areas and disciplines to maximize learning outcomes?
- Which model best ensures all schools utilize and maximize instructional spaces and staffing considerations?
- Which model best serves all students with a consistent philosophy of high quality education, addresses students' plane of development, and reflects the demographics of the entire district community?