

Park: Alpena County Fair Grounds
Report by: PATRICK MARTIN
Date: 9/4/2023 (August Report)



PARK MANAGER MONTHLY REPORT

Ongoing Improvements Project(s) Progress:

- 1) Merchant Building; WAITING TILL FAIR is over + events to start renovations
- 2) Possible new sign by road, (can we ask for sponsorship)

Campground Activities & Site Notes:

- 1) Fair Aug 11th - 20th
 - 2) Overflow lots went great total of 8 people back there \$1400
 - 3) Lot 66 with heavy rains floods, could we use ^{Brought in} some ground improvement budget to build it up?
- Budget Adjustments Needed/Budget Look Ahead:
- 1) With FAIR we are \$20,000 over budget !!
 - 2) TRACTOR BEFORE WINTER STORAGE!!!*
 - 3) Move \$100 from fire suppression to JANITORIAL just to be safe

Upcoming/Needed Maintenance:

- 1) House repairs
- 2) Roads graded after season
- 3) County truck is going in for the repairs in the next week

* Attached: Occupancy Reports, Revenue YTD (actual v budget)

Manager Should Keep on Site and Available for Inspection: Maintenance Checklists (3 month, 6 month, annual), Vehicle Inspection Checklist, Playground Inspection Checklist

REVENUE AND EXPENDITURE REPORT FOR ALPENA COUNTY
 PERIOD ENDING 09/30/2023

GL NUMBER	DESCRIPTION	2023 AMENDED BUDGET	YTD BALANCE 09/30/2023	ACTIVITY FOR MONTH 09/30/2023	AVAILABLE BALANCE	% BDGT USED
Fund 101 - GENERAL FUND						
Revenues						
Dept 268 - FAIRGROUNDS						
101-268-642.000	FIREWOOD SALES	0.00	0.00	0.00	0.00	0.00
101-268-654.000	SHOWER FEES	150.00	168.00	0.00	(18.00)	112.00
101-268-654.001	DUMP FEES	1,500.00	1,200.00	0.00	300.00	80.00
101-268-654.002	CAMP FEES	30,000.00	53,698.00	0.00	(23,698.00)	178.99
101-268-654.003	WINTER STORAGE	19,100.00	75.00	0.00	19,025.00	0.39
101-268-667.000	MERCHANT'S RENTAL	1,500.00	2,550.00	0.00	(1,050.00)	170.00
101-268-667.001	GROUND'S RENTAL	600.00	600.00	0.00	0.00	100.00
101-268-667.002	GROUND'S RENTAL-RESERVE	0.00	0.00	0.00	0.00	0.00
101-268-677.002	FAIRBOARD UTILITY REIMBURSEMENT	4,500.00	2,864.58	0.00	1,635.42	63.66
101-268-684.000	MISCELLANEOUS REVENUE	0.00	0.00	0.00	0.00	0.00
101-268-699.214	TRANSFERS FROM ARPA	3,000.00	3,000.00	0.00	0.00	100.00
101-268-699.402	TRANSFER FROM 402 EQUIP FUND	2,500.00	2,500.00	0.00	0.00	100.00
Total Dept 268 - FAIRGROUNDS		62,850.00	66,655.58	0.00	(3,805.58)	106.06
TOTAL REVENUES						
Total Dept 268 - FAIRGROUNDS		62,850.00	66,655.58	0.00	(3,805.58)	106.06
Expenditures						
Dept 268 - FAIRGROUNDS						
101-268-703.000	FAIRGROUNDS CARETAKER	15,000.00	10,119.18	0.00	4,880.82	67.46
101-268-709.000	SOCIAL SECURITY	930.00	627.39	0.00	302.61	67.46
101-268-711.000	MEDICARE	218.00	146.72	0.00	71.28	67.30
101-268-718.000	HSA	0.00	0.00	0.00	0.00	0.00
101-268-724.009	WORKER'S COMPENSATION	240.00	0.00	0.00	240.00	0.00
101-268-724.014	SICK & ACCIDENT	0.00	0.00	0.00	0.00	0.00
101-268-731.000	LICENSES	725.00	719.00	0.00	0.00	99.17
101-268-743.000	GASOLINE	250.00	63.87	0.00	186.13	25.55
101-268-783.000	BLDG & GROUND'S SUPPLIES	200.00	12.80	0.00	187.20	6.40
101-268-784.000	JANITORIAL SUPPLIES	1,050.00	928.22	0.00	121.78	88.40
101-268-801.001	PROF SERV - HAZ WASTE REMOVAL	0.00	0.00	0.00	0.00	0.00
101-268-802.000	FIRE SUPPRESSION	1,000.00	596.03	0.00	403.97	59.60
101-268-826.000	VEHICLE MAINT MANAGEMENT	56.00	24.00	0.00	32.00	42.86
101-268-850.000	TELEPHONE	90.00	41.51	0.00	48.49	46.12
101-268-860.000	TRAVEL	250.00	176.72	0.00	73.28	70.69
101-268-920.000	NATURAL GAS	17,900.00	10,940.07	0.00	6,959.93	61.12
101-268-921.000	LIGHTS	29,400.00	20,786.55	0.00	8,613.45	70.70
101-268-922.000	WATER & SEWER	10,475.00	6,334.10	0.00	4,140.90	60.47
101-268-931.000	EQUIPMENT MAINTENANCE	3,344.00	3,183.76	0.00	160.24	95.21
101-268-932.000	BUILDING MAINTENANCE	8,750.00	2,029.67	0.00	6,720.33	23.20
101-268-933.000	GROUND'S MAINTENANCE	2,400.00	151.91	0.00	2,248.09	6.33
101-268-934.000	VEHICLE MAINTENANCE	2,500.00	0.00	0.00	2,500.00	0.00
Total Dept 268 - FAIRGROUNDS		94,778.00	56,881.50	0.00	37,896.50	60.02
TOTAL EXPENDITURES						
Total Dept 268 - FAIRGROUNDS		94,778.00	56,881.50	0.00	37,896.50	60.02
Fund 101 - GENERAL FUND:						
TOTAL REVENUES		62,850.00	66,655.58	0.00	(3,805.58)	106.06
TOTAL EXPENDITURES		94,778.00	56,881.50	0.00	37,896.50	60.02
NET OF REVENUES & EXPENDITURES		(31,928.00)	9,774.08	0.00	(41,702.08)	30.61

Occupancy Report (as of 9/7/2023)

	May 2023	Jun 2023	Jul 2023	Aug 2023	Sep 2023	Oct 2023	Average
Site #1	0.0%	3.3%	61.3%	45.2%	0.0%	0.0%	22.1%
Site #2	0.0%	3.3%	9.7%	45.2%	0.0%	0.0%	11.7%
Site #3	0.0%	0.0%	0.0%	38.7%	0.0%	0.0%	7.8%
Site #4	0.0%	0.0%	0.0%	35.5%	0.0%	0.0%	7.1%
Site #5	0.0%	0.0%	6.5%	38.7%	0.0%	0.0%	9.1%
Site #6	0.0%	50.0%	25.8%	41.9%	0.0%	0.0%	23.4%
Site #7	0.0%	0.0%	19.4%	38.7%	0.0%	0.0%	11.7%
Site #8	0.0%	0.0%	19.4%	38.7%	0.0%	0.0%	11.7%
Site #9	0.0%	0.0%	0.0%	67.7%	13.3%	0.0%	16.2%
Site #10	0.0%	30.0%	100.0%	19.4%	0.0%	0.0%	29.9%
Site #11	11.8%	100.0%	100.0%	100.0%	100.0%	93.3%	89.6%
Site #12	0.0%	0.0%	0.0%	29.0%	0.0%	0.0%	5.8%
Site #13	0.0%	0.0%	0.0%	29.0%	0.0%	0.0%	5.8%
Site #14	5.9%	100.0%	0.0%	51.6%	0.0%	0.0%	30.5%
Site #15	0.0%	0.0%	100.0%	38.7%	0.0%	0.0%	27.9%
Site #16	0.0%	0.0%	0.0%	29.0%	0.0%	0.0%	5.8%
Site #17	0.0%	0.0%	0.0%	25.8%	0.0%	0.0%	5.2%
Site #18	0.0%	0.0%	0.0%	22.6%	0.0%	0.0%	4.5%
Site #19	0.0%	0.0%	29.0%	100.0%	100.0%	93.3%	54.5%
Site #20	0.0%	0.0%	22.6%	29.0%	0.0%	0.0%	10.4%
Site #21	0.0%	0.0%	6.5%	45.2%	0.0%	0.0%	10.4%
Site #22	0.0%	0.0%	6.5%	29.0%	0.0%	0.0%	7.1%
Site #23	0.0%	0.0%	9.7%	29.0%	0.0%	0.0%	7.8%
Site #24	0.0%	60.0%	83.9%	32.3%	0.0%	0.0%	35.1%
Site #25	0.0%	10.0%	9.7%	29.0%	0.0%	0.0%	9.7%
Site #26	0.0%	0.0%	12.9%	29.0%	0.0%	0.0%	8.4%
Site #27	0.0%	0.0%	12.9%	35.5%	0.0%	0.0%	9.7%
Site #28	0.0%	0.0%	0.0%	29.0%	0.0%	0.0%	5.8%
Site #29	0.0%	0.0%	0.0%	29.0%	0.0%	0.0%	5.8%
Site #30	0.0%	3.3%	100.0%	48.4%	40.0%	0.0%	38.3%
Site #31	0.0%	0.0%	0.0%	22.6%	0.0%	0.0%	4.5%
Site #32	0.0%	0.0%	0.0%	22.6%	0.0%	0.0%	4.5%
Site #33	0.0%	0.0%	0.0%	29.0%	0.0%	0.0%	5.8%
Site #34	0.0%	0.0%	0.0%	29.0%	0.0%	0.0%	5.8%
Site #35	0.0%	40.0%	100.0%	100.0%	100.0%	93.3%	76.6%
Site #36	0.0%	0.0%	0.0%	74.2%	100.0%	100.0%	44.2%
Site #37	100.0%	100.0%	100.0%	100.0%	100.0%	93.3%	99.4%
Site #38	0.0%	0.0%	0.0%	51.6%	0.0%	0.0%	10.4%
Site #39	52.9%	46.7%	45.2%	29.0%	0.0%	0.0%	29.9%
Site #40	0.0%	26.7%	54.8%	29.0%	96.7%	0.0%	40.9%
Site #41	0.0%	6.7%	29.0%	29.0%	0.0%	0.0%	13.0%
Site #42	0.0%	30.0%	32.3%	35.5%	0.0%	0.0%	19.5%
Site #43	0.0%	0.0%	0.0%	29.0%	0.0%	0.0%	5.8%
Site #44	100.0%	100.0%	100.0%	45.2%	23.3%	0.0%	64.3%
Site #45	0.0%	0.0%	0.0%	29.0%	0.0%	0.0%	5.8%
Site #46	0.0%	53.3%	32.3%	48.4%	0.0%	0.0%	26.6%

Occupancy Report (as of 9/7/2023)

	May 2023	Jun 2023	Jul 2023	Aug 2023	Sep 2023	Oct 2023	Average
Site #47	0.0%	16.7%	9.7%	25.8%	0.0%	0.0%	10.4%
Site #48	0.0%	70.0%	100.0%	80.6%	100.0%	93.3%	78.6%
Site #49	41.2%	10.0%	0.0%	35.5%	0.0%	0.0%	13.6%
Site #50	0.0%	96.7%	100.0%	77.4%	100.0%	93.3%	83.1%
Site #51	76.5%	100.0%	100.0%	48.4%	0.0%	0.0%	57.8%
Site #52	0.0%	53.3%	100.0%	54.8%	0.0%	0.0%	41.6%
Site #53	0.0%	3.3%	0.0%	29.0%	23.3%	0.0%	11.0%
Site #54	0.0%	6.7%	0.0%	29.0%	10.0%	0.0%	9.1%
Site #55	0.0%	36.7%	38.7%	41.9%	16.7%	0.0%	26.6%
Site #56	100.0%	100.0%	100.0%	100.0%	100.0%	100.0%	100.0%
Site #57	11.8%	6.7%	12.9%	54.8%	3.3%	0.0%	16.9%
Site #58	23.5%	10.0%	74.2%	58.1%	0.0%	0.0%	31.2%
Site #59	11.8%	73.3%	16.1%	61.3%	0.0%	0.0%	31.2%
Site #60	5.9%	20.0%	64.5%	54.8%	10.0%	0.0%	30.5%
Site #61	0.0%	66.7%	74.2%	58.1%	16.7%	0.0%	42.9%
Site #62	41.2%	36.7%	48.4%	58.1%	0.0%	0.0%	33.1%
Site #63	41.2%	13.3%	77.4%	77.4%	36.7%	0.0%	45.5%
Site #64	29.4%	26.7%	22.6%	41.9%	0.0%	0.0%	21.4%
Site #65	11.8%	30.0%	32.3%	38.7%	0.0%	0.0%	21.4%
Site #66	5.9%	66.7%	48.4%	48.4%	23.3%	0.0%	37.7%
Site #67	35.3%	13.3%	22.6%	41.9%	16.7%	0.0%	22.7%
Site #68	0.0%	53.3%	45.2%	54.8%	100.0%	0.0%	50.0%
Site #69	0.0%	16.7%	48.4%	67.7%	33.3%	0.0%	33.1%
Rustic #70	0.0%	0.0%	0.0%	29.0%	0.0%	0.0%	5.8%
Rustic #71	0.0%	0.0%	0.0%	29.0%	0.0%	0.0%	5.8%
Rustic #72	0.0%	0.0%	0.0%	25.8%	0.0%	0.0%	5.2%
Rustic #73	0.0%	0.0%	0.0%	25.8%	0.0%	0.0%	5.2%
Rustic #74	0.0%	0.0%	0.0%	0.0%	0.0%	0.0%	0.0%
Rustic #75	0.0%	0.0%	0.0%	16.1%	0.0%	0.0%	3.2%
Rustic #76	0.0%	0.0%	0.0%	22.6%	0.0%	0.0%	4.5%
Rustic #77	0.0%	0.0%	0.0%	0.0%	0.0%	0.0%	0.0%
Rustic #78	0.0%	0.0%	0.0%	25.8%	0.0%	0.0%	5.2%
Rustic #79	0.0%	0.0%	0.0%	25.8%	0.0%	0.0%	5.2%
Rustic #80	0.0%	0.0%	0.0%	29.0%	0.0%	0.0%	5.8%
Rustic #81	0.0%	0.0%	0.0%	0.0%	0.0%	0.0%	0.0%
Rustic #82	0.0%	0.0%	0.0%	0.0%	0.0%	0.0%	0.0%
Rustic #83	0.0%	0.0%	0.0%	0.0%	0.0%	0.0%	0.0%
Rustic #84	0.0%	0.0%	0.0%	48.4%	0.0%	0.0%	9.7%
Rustic #85	0.0%	0.0%	0.0%	0.0%	0.0%	0.0%	0.0%
Merch. Bldg.	5.9%	13.3%	12.9%	12.9%	0.0%	0.0%	8.4%
Grand Stand/ Stage	0.0%	6.7%	0.0%	0.0%	0.0%	0.0%	1.3%
Dump Fee	35.3%	40.0%	32.3%	32.3%	3.3%	0.0%	25.3%
Shower Fees	23.5%	16.7%	16.1%	6.5%	3.3%	0.0%	11.0%
HORSE BARN	0.0%	0.0%	0.0%	0.0%	0.0%	0.0%	0.0%
ARENA	0.0%	0.0%	0.0%	0.0%	0.0%	0.0%	0.0%
WINTER STORAGE HORSE BARN	0.0%	0.0%	0.0%	0.0%	0.0%	0.0%	0.0%

Occupancy Report (as of 9/7/2023)

	May 2023	Jun 2023	Jul 2023	Aug 2023	Sep 2023	Oct 2023	Average
WINTER STROAGE CATTLE BARN	0.0%	0.0%	0.0%	0.0%	0.0%	0.0%	0.0%
WINTER STORAGE PIG BARN	0.0%	0.0%	0.0%	0.0%	0.0%	0.0%	0.0%
WINTER STORAGE RABITT BARN	0.0%	0.0%	0.0%	0.0%	0.0%	0.0%	0.0%
WINTER STORAGE GOAT BARN	0.0%	0.0%	0.0%	0.0%	0.0%	0.0%	0.0%
WINTER STORAGE GRAND STANDS	0.0%	0.0%	0.0%	0.0%	0.0%	0.0%	0.0%
(No Site)	-	-	-	-	-	-	-
Average:	7.9%	18.2%	25.0%	35.8%	13.1%	7.8%	20.0%

16mm LED Sign

The 16mm LED sign produces images that are both amazingly sharp and incredibly bright. In both XVS and W series, this sign is a brilliant way to attract customers.

The 16mm LED sign modules follow the same form factor as Watchfire's other high-resolution models. The universally sized modules make design, market comparison, upgrade and installation easier.

Features

Through-hole LED construction is proven to maximize image clarity and lengthen LED life.

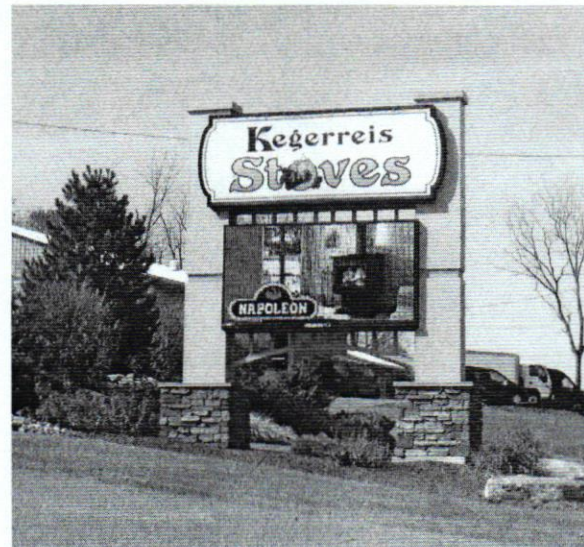
Tight pixel pitch gives signs superior image quality and high resolution for close-range viewing and slower traffic speeds.

High-efficiency components deliver eye-catching brightness and reduce operating costs to maximize return on investment.

Vivid colors produce true-to-life images on every XVS and W series sign.

Beveled module edges offer near-seamless installation, even around curves.

The XVS advantage is an available option, providing live video capability, multi-channel data, whole-sign calibration and automated sign diagnostics.



W 16mm 72 x 144 • 4'5" x 8'3"
Kegerreis Stoves • Bernville, PA

16mm Sign Features	W	XVS
Pixel Pitch	16.93 mm (0.667")	16.93 mm (0.667")
Pixel Configuration	True Pixel, 1R, 1G, 1B	True Pixel, 1R, 1G, 1B
Character Height	4" & larger	4" & larger
Module Dimensions (HxW)	12" x 12"	12" x 12"
Matrix Configuration	18 x 18 pixels	18 x 18 pixels
LED Lifetime (50% brightness)	100,000 hours	100,000 hours
Color Capability	18 quadrillion	73.8 quintillion
Viewing Angle	140° horizontal x 70° vertical	140° horizontal x 70° vertical
Video Frame Rate	Up to 30 frames/second	Up to 60 frames/second
Field-Adjustable Brightness	Up to 10,000 NITs	Up to 10,000 NITs
Power	120 or 240 volt single phase 60Hz	120 or 240 volt single phase 60Hz
Communications Options	RWF, High Security Radio, broadband wireless & DSL, XVS fiber, FiberCom, phone control	RWF, High Security Radio, broadband wireless & DSL, FiberCom, phone control

Watchfire manufactures LED signs to fit almost any application. Sign sizes are based on a module size of approximately 12" x 12". Contact your Watchfire representative for more information.

"The sign has been very effective in advertising used stoves. It's so flexible. We advertise trade-ins, which sell quickly, then we can easily change the sign and advertise something else."

BRIAN KEGERREIS
KEGERREIS STOVES | BERNVILLE, PA

Engineered and Built for Reliability and Quality

Every module is encapsulated in silicone to be ruggedly durable in all kinds of weather.

Components are rigorously tested for 180 consecutive days of underwater immersion and 60 consecutive days of salt spray. Cabinets are rated for temperatures ranging from -40°F to 140°F. Electronics are rated from -40°F to 185°F.

Extruded aluminum, precision-mitered corners, solid welds, and stainless steel fasteners make our cabinets strong, yet lightweight and stand up to corrosion for years of worry-free performance.

Average energy use equals about 1/3 of maximum amperage. All signs are UL 48 and CUL48 listed and UL Energy Efficiency Certified.

Ignite®

Ignite® software comes free with every sign, offering convenient scheduling and content management. We made improvements to the user interface, and enhanced our free EasyArt package, data feed integration and advanced diagnostics, Ignite is a comprehensive content manager for digital novices and tech-savvy programmers, now with a cloud-based option.

	Ignite OP v. 12+	Ignite OPx v. 2+
Installed software	✓	
Cloud-based platform		✓
Internet connection required		✓
Advanced content creator	✓	COMING SOON
Upload, schedule and manage content	✓	✓
EasyArt, 1000+ stills and animations	✓	COMING SOON
Control multiple Watchfire signs	✓	✓
Access sign diagnostics	✓	✓
Create conditional and dynamic content	✓	✓
Access data through RSS	✓	✓
Manage multiple data feeds		✓
Structured user rights management		✓

Warranty

Watchfire's industry best 5-year warranty covers all Watchfire manufactured parts and factory labor. It comes standard with every LED sign we sell.

For more information, contact your Watchfire representative.



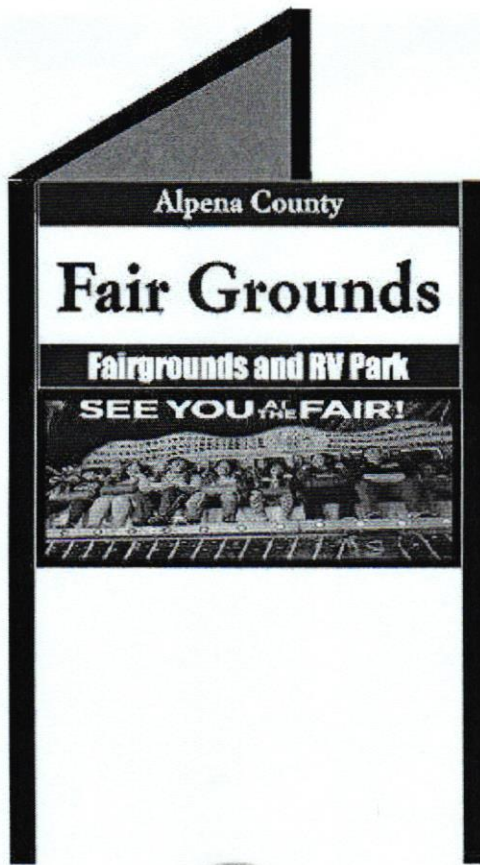
XVS 16mm 90 x 126 • 5'6" x 7'6"
Orange Park Medical Center • Orange Park, FL



XVS 16mm 128 x 240 • 7'4" x 13'4"
Tri-County Towne Center • Springdale, OH

“The new sign is the first LED approved for our market, and we believe it gives us a competitive edge. We can promote specials our tenants have. We also remind customers about shopping events.”

CLARK GILHART
TRI-COUNTY TOWNE CENTER | SPRINGDALE, OH



Customer:	ALPENA COUNTY FAIRGROUNDS	
Company:		
Address:	ALPENA	
City:		State/Zip:
Phone:		
Fax:		



Job No.:	Date:	8/23/2023
Order Date:	0/0/2023	Installer: R. Fairchild
Sign Dimensions:	4'XB' MAIN, 4XB LED	Estimate: \$36,260.00
Comments:	Y SHAPED DOUBLE SIDED FREESTANDING SIGN WITH LIGHTED MAIN MESSAGE, AND 4'XB' X 16'00" FULL COLOR LED MESSAGE CENTERS WITH LIFETIME CELLULAR CONNECTION AND ANT PACKAGE. COMPLETE PACKAGE INSTALLED.	