



Collin College

2017 Capital Improvement Program
Monthly Report
October 2017

Collin County Community College District

Project Reference: 60541060
Project Number: 60541060

November 2, 2017

Quality information

Prepared by



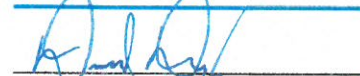
Nick Fiehler
Program Controls Manager

Checked by



Adrian Grimes
Deputy Program Director

Approved by



David Dailey
Program Director

Revision History

| Revision | Revision date | Details | Authorized | Name | Position |
|-------------------|---------------|----------------|------------|--------------|------------------|
| First Publication | 11/02/2017 | October Report | Yes | David Dailey | Program Director |
| | | | | | |
| | | | | | |
| | | | | | |

Distribution List

| # Hard Copies | PDF Required | Association / Company Name |
|---------------|--------------|----------------------------|
| 1 | 1 | Ken Lynn / Collin College |
| 1 | 1 | Bill King / Collin College |
| | | |
| | | |

Prepared for:

Collin County Community College District
3452 Spur 399
Suite 327
McKinney, TX 75069

Prepared by:

Nick Fiehler
Program Controls Manager
E: nfiehler.aecom@collin.edu

AECOM
1950 N Stemmons Freeway
Suite 600
Dallas TX, 75207
aecom.com

Copyright © 2017 by AECOM

All rights reserved. No part of this copyrighted work may be reproduced, distributed, or transmitted in any form or by any means without the prior written permission of AECOM.

Table of Contents

| | | |
|-------|---|----|
| 1. | Introduction | 5 |
| 2. | Scope..... | 5 |
| 2.1 | Phase 1 | 5 |
| 2.2 | Phase 2 | 5 |
| 2.3 | Phase 3 | 6 |
| 2.4 | Phase 4 | 6 |
| 3. | Community..... | 7 |
| 3.1 | Project Teams..... | 7 |
| 3.1.1 | Phase 1 | 7 |
| 3.1.2 | Phase 2 | 7 |
| 3.1.3 | Phase 3 | 7 |
| 3.1.4 | Phase 4 | 8 |
| 3.2 | Current Personnel Estimate..... | 9 |
| 3.3 | Community Outreach..... | 9 |
| 4. | Schedule..... | 10 |
| 4.1 | Program..... | 10 |
| 4.2 | Phase 1 | 10 |
| 4.3 | Phase 2 | 11 |
| 4.4 | Phase 3 | 12 |
| 4.5 | Phase 4 | 12 |
| 5. | Budget | 13 |
| 5.1 | Program Summary | 13 |
| 5.2 | Phase 1 | 13 |
| 5.3 | Phase 2 | 14 |
| 5.4 | Phase 3 | 15 |
| 5.5 | Phase 4 | 15 |
| 5.6 | Building Fund Reimbursement | 16 |
| 6. | Completed Items..... | 17 |
| 6.1 | General Program | 17 |
| 6.2 | Procurement..... | 17 |
| 6.3 | Design | 17 |
| 6.4 | Pre-Construction..... | 18 |
| 6.5 | Construction | 18 |
| 6.6 | Acceptance and Close-Out..... | 18 |
| 7. | Pending Items..... | 18 |
| 7.1 | General Program | 18 |
| 7.2 | Procurement..... | 18 |
| 7.3 | Design | 18 |
| 7.4 | Pre-Construction..... | 18 |
| 7.5 | Construction | 18 |
| 7.6 | Acceptance and Close-Out..... | 18 |
| | Appendix A – Schedule Milestone Definitions | 19 |

1. Introduction

On May 6, 2017, voters approved Collin College's \$600 million bond proposal to facilitate a long-range plan to accommodate the projected population growth in Collin County over the next two decades. The program consists of 4 new campuses, 3 new facilities, 2 repurposed existing spaces, and 3 wayfinding projects (on existing sites). The program is scheduled to be completed in 4 phases over 7 years with projects opening in early 2020.

On May 16, 2017, in a special session, the Board of Trustees granted the District President authority to enter and negotiate into contract with AECOM Technical Services, Inc. (AECOM) to provide Program Management Services to the Collin College 2017 Capital Improvement Program. On May 25, 2017, Collin College issued a Notice to Proceed to AECOM. As part of these services, AECOM will deliver a monthly report to provide status and progress of key aspects of the Program.

2. Scope

2.1 Phase 1

- Wylie Campus
 - Construction of a campus on a new approximately 97-acre site
 - The campus is planned to include:
 - [Campus Commons](#)
 - [Learning Resource Center / Library](#)
 - [Student Center](#)
 - [Conference Center](#)
 - [Lab Building](#)
 - [Instructional Building](#)
 - [Student Union / Welcome Center / Library](#)
- Technical Campus
 - Construction of a Technical Campus on a new 32-acre site in Allen, Texas
 - Programs planned for inclusion include:
 - Advanced Manufacturing, Aviation Technology, Construction, Health Science, Logistics and Transportation

2.2 Phase 2

- Celina Campus
 - Construction of a campus on a new approximately 75-acre site
 - The campus is planned to include:
 - [Student Union / Workforce / Instructional Building](#)
- Farmersville Campus
 - Construction of a campus on a new approximately 75-acre site
 - The campus is planned to include:

- Student Union / Workforce / Instructional Building
- Preston Ridge Campus
 - Construction of a new facility on an existing campus
 - The campus is planned to include:
 - IT Center of Excellence

2.3 Phase 3

- Preston Ridge Campus
 - Construction of a new facility on an existing campus
 - The campus is planned to include:
 - Welcome Center
- Central Park Campus
 - Construction of a new facility on an existing campus
 - The campus is planned to include:
 - Welcome Center

2.4 Phase 4

- Preston Ridge Campus
 - Renovations / Repurposing of Existing Buildings
- Central Park Campus
 - Renovations / Repurposing of Existing Buildings
- Central Park Campus
 - Traffic Infrastructure & Wayfinding
- Preston Ridge Campus
 - Wayfinding
- Spring Creek Campus
 - Wayfinding

3. Community

3.1 Project Teams

3.1.1 Phase 1

- Wylie Campus
 - Program Manager: AECOM Technical Services, Inc. (under contract)
 - A/E: Page Southerland Page, Inc. (under contract)
 - MEP: [Reed, Wells, Benson & Co.](#)
 - Civil Engineer: [Pacheco Koch Consulting Engineers, Inc.](#)
 - Construction Manager-at-Risk: Skanska USA Building, Inc. (under contract)
- Technical Campus
 - Program Manager: AECOM Technical Services, Inc. (under contract)
 - A/E: Perkins+Will, Inc. (under contract)
 - MEP: [Purdy McGuire](#)
 - Civil Engineer: [Pacheco Koch Consulting Engineers, Inc.](#)
 - Construction Manager-at-Risk: McCarthy Building Companies, Inc. (under contract)

3.1.2 Phase 2

- Celina Campus
 - Program Manager: (AECOM option expiration date: May 2018)
 - A/E: TBD
 - Construction Manager-at-Risk: TBD
- Farmersville Campus
 - Program Manager: (AECOM option expiration date: May 2018)
 - A/E: TBD
 - Construction Manager-at-Risk: TBD
- Preston Ridge Campus (IT Center of Excellence)
 - Program Manager: (AECOM option expiration date: May 2018)
 - A/E: TBD
 - Construction Manager-at-Risk: TBD

3.1.3 Phase 3

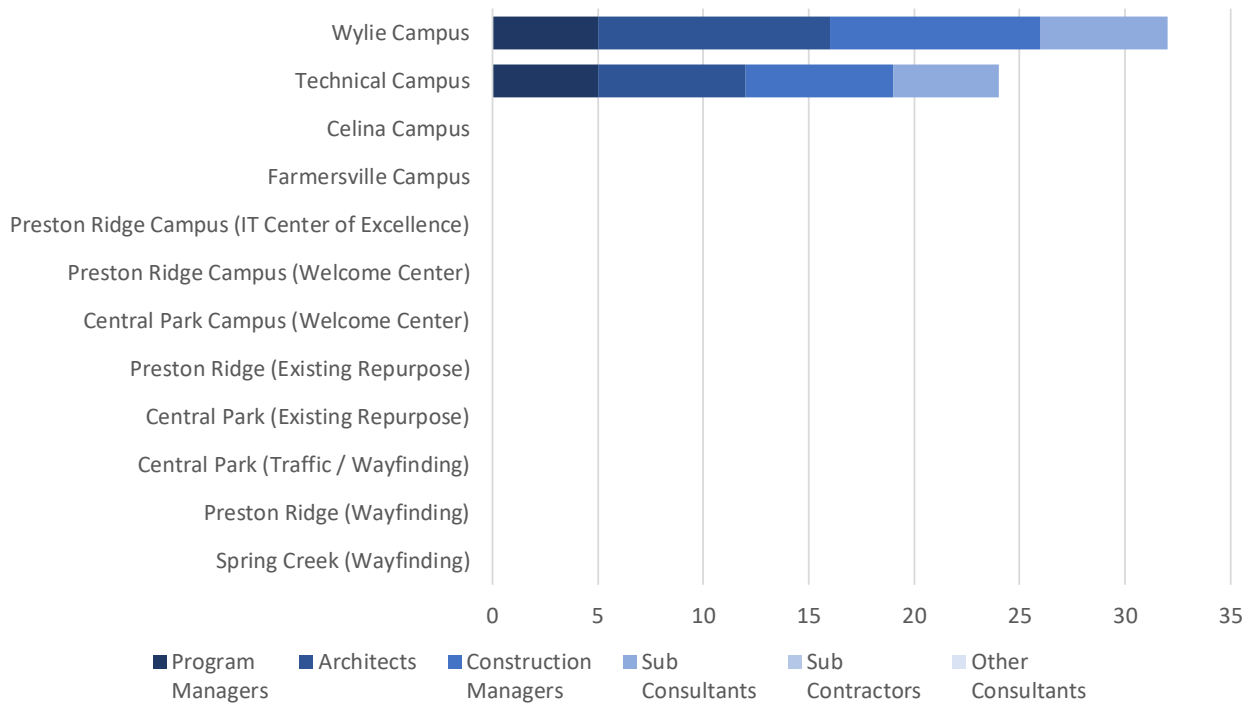
- Preston Ridge Campus (Welcome Center)
 - Program Manager: (AECOM option expiration date: August 2019)
 - A/E: TBD
 - Construction Manager-at-Risk: TBD

- Central Park Campus (Welcome Center)
 - Program Manager: (AECOM option expiration date: August 2019)
 - A/E: TBD
 - Construction Manager-at-Risk: TBD

3.1.4 Phase 4

- Preston Ridge (Existing Repurpose)
 - Program Manager: (AECOM option expiration date: May 2021)
 - A/E: TBD
 - Construction Manager-at-Risk: TBD
- Central Park (Existing Repurpose)
 - Program Manager: (AECOM option expiration date: May 2021)
 - A/E: TBD
 - Construction Manager-at-Risk: TBD
- Central Park (Traffic / Wayfinding)
 - Program Manager: (AECOM option expiration date: May 2021)
 - A/E: TBD
 - Construction Manager-at-Risk: TBD
- Preston Ridge (Wayfinding)
 - Program Manager: (AECOM option expiration date: May 2021)
 - A/E: TBD
 - Construction Manager-at-Risk: TBD
- Spring Creek (Wayfinding)
 - Program Manager: (AECOM option expiration date: May 2021)
 - A/E: TBD
 - Construction Manager-at-Risk: TBD

3.2 Current Personnel Estimate



It is estimated that the Program Managers, Architects, Construction Managers, Sub-Consultants, and Sub-Contractors, under contract with Collin College for the 2017 Capital Improvement Program, have 52 employees contributing to the program’s progress.

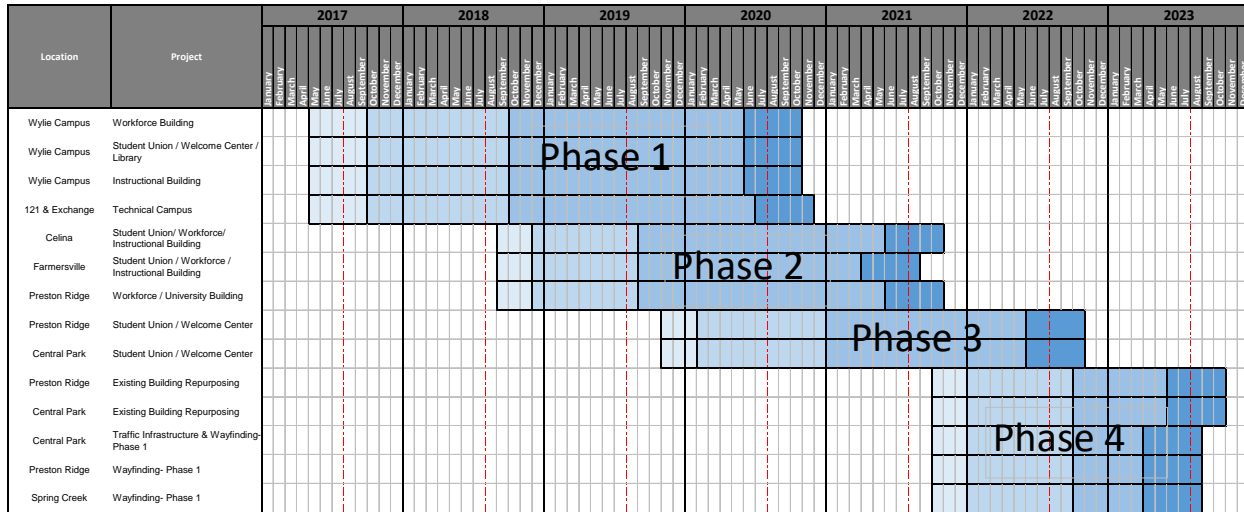
3.3 Community Outreach

- Collin College 2017 Capital Improvement Program Website;
 - o <https://CollinCollege2017CIP.com>
 - o Includes the following features:
 - Program Overview
 - Project Scopes
 - Project Schedules
 - Project Budgets
 - Progress Photos/Renderings
 - Live On-Site Camera Feeds

4. Schedule

Appendix A – Schedule Milestone Definitions includes listing of milestones and definitions

4.1 Program



| |
|------------------------------|
| Planning & Team Selection |
| Programming & Design |
| Construction |
| Final Completion & Close-Out |

4.2 Phase 1

Wylie Campus

| Activity | Baseline Finish | Planned Finish | | Actual Finish | |
|--|--------------------|--------------------|---|--------------------|---|
| BOT Approval of Program Manager | May 16, 2017 | May 16, 2017 | ↑ | May 16, 2017 | ✓ |
| BOT Approval of A/E Procurement Method | May 23, 2017 | May 23, 2017 | ↑ | May 23, 2017 | ✓ |
| BOT Approval of Construction Delivery Method | May 23, 2017 | May 23, 2017 | ↑ | May 23, 2017 | ✓ |
| BOT Approval of Recommended Firms | August 22, 2017 | August 22, 2017 | ↑ | August 22, 2017 | ✓ |
| Architect Mobilized | September 12, 2017 | September 29, 2017 | ↓ | September 28, 2017 | ✓ |
| Schematic Design Submittal | January 10, 2017 | January 10, 2017 | ↑ | - | |
| Design Development Submittal | March 11, 2018 | March 11, 2018 | ↑ | - | |
| Construction Document Submittal | July 19, 2018 | July 19, 2018 | ↑ | - | |
| BOT Approval of GMP (Site) | April 24, 2018 | April 24, 2018 | ↑ | - | |
| Contractor Mobilized | May 1, 2018 | May 1, 2018 | ↑ | - | |
| BOT Approval of GMP (Facility) | TBD | TBD | | - | |
| Foundations Complete | TBD | TBD | | - | |
| Building Top Out | TBD | TBD | | - | |
| Building Dry-In | TBD | TBD | | - | |
| Building Energized | TBD | TBD | | - | |
| Building Climatized | TBD | TBD | | - | |
| Temporary CO | TBD | TBD | | - | |
| Final CO | TBD | TBD | | - | |
| Substantial Completion | May 1, 2020 | May 1, 2020 | ↑ | - | |
| Final Completion | July 1, 2020 | July 1, 2020 | ↑ | - | |
| Student Occupancy | August 2020 | August 2020 | ↑ | - | |

Technical Campus

| Activity | Baseline Finish | Planned Finish | | Actual Finish | |
|--|--------------------|--------------------|---|--------------------|---|
| BOT Approval of Program Manager | May 16, 2017 | May 16, 2017 | ↑ | May 16, 2017 | ✓ |
| BOT Approval of A/E Procurement Method | May 23, 2017 | May 23, 2017 | ↑ | May 23, 2017 | ✓ |
| BOT Approval of Construction Delivery Method | May 23, 2017 | May 23, 2017 | ↑ | May 23, 2017 | ✓ |
| BOT Approval of Recommended Firms | August 22, 2017 | August 22, 2017 | ↑ | August 22, 2017 | ✓ |
| Architect Mobilized | September 12, 2017 | September 29, 2017 | ↓ | September 28, 2017 | ✓ |
| Schematic Design Submittal | December 6, 2017 | December 6, 2017 | ↑ | - | |
| Design Development Submittal | April 4, 2018 | April 4, 2018 | ↑ | - | |
| Construction Document Submittal | September 12, 2018 | September 12, 2017 | ↑ | - | |
| BOT Approval of GMP (Site) | May 22, 2018 | May 22, 2018 | ↑ | - | |
| Contractor Mobilized | June 1, 2018 | June 1, 2018 | ↑ | - | |
| BOT Approval of GMP (Facility) | TBD | TBD | | - | |
| Foundations Complete | TBD | TBD | | - | |
| Building Top Out | TBD | TBD | | - | |
| Building Dry-In | TBD | TBD | | - | |
| Building Energized | TBD | TBD | | - | |
| Building Climatized | TBD | TBD | | - | |
| Temporary CO | TBD | TBD | | - | |
| Final CO | TBD | TBD | | - | |
| Substantial Completion | May 1, 2020 | May 1, 2020 | ↑ | - | |
| Final Completion | July 1, 2020 | July 1, 2020 | ↑ | - | |
| Student Occupancy | August 2020 | August 2020 | ↑ | - | |

4.3 Phase 2

Celina Campus

| Activity | Baseline Finish | Planned Finish | | Actual Finish | |
|--|-----------------|----------------|---|---------------|--|
| BOT Approval of Program Manager | September 2018 | September 2018 | ↑ | - | |
| BOT Approval of A/E Procurement Method | September 2018 | September 2018 | ↑ | - | |
| BOT Approval of Construction Delivery Method | September 2018 | September 2018 | ↑ | - | |
| Student Occupancy | August 2021 | August 2021 | ↑ | - | |

Farmersville Campus

| Activity | Baseline Finish | Planned Finish | | Actual Finish | |
|--|-----------------|----------------|---|---------------|--|
| BOT Approval of Program Manager | September 2018 | September 2018 | ↑ | - | |
| BOT Approval of A/E Procurement Method | September 2018 | September 2018 | ↑ | - | |
| BOT Approval of Construction Delivery Method | September 2018 | September 2018 | ↑ | - | |
| Student Occupancy | August 2021 | August 2021 | ↑ | - | |

Preston Ridge Campus (IT Center of Excellence)

| Activity | Baseline Finish | Planned Finish | | Actual Finish | |
|--|-----------------|----------------|---|---------------|--|
| BOT Approval of Program Manager | September 2018 | September 2018 | ↑ | - | |
| BOT Approval of A/E Procurement Method | September 2018 | September 2018 | ↑ | - | |
| BOT Approval of Construction Delivery Method | September 2018 | September 2018 | ↑ | - | |
| Student Occupancy | August 2021 | August 2021 | ↑ | - | |

4.4 Phase 3

Preston Ridge Campus (Welcome Center)

| Activity | Baseline Finish | Planned Finish | | Actual Finish |
|--|-----------------|----------------|---|---------------|
| BOT Approval of Program Manager | November 2019 | November 2019 | ↑ | - |
| BOT Approval of A/E Procurement Method | November 2019 | November 2019 | ↑ | - |
| BOT Approval of Construction Delivery Method | November 2019 | November 2019 | ↑ | - |
| Student Occupancy | August 2022 | August 2022 | ↑ | - |

Central Park Campus (Welcome Center)

| Activity | Baseline Finish | Planned Finish | | Actual Finish |
|--|-----------------|----------------|---|---------------|
| BOT Approval of Program Manager | November 2019 | November 2019 | ↑ | - |
| BOT Approval of A/E Procurement Method | November 2019 | November 2019 | ↑ | - |
| BOT Approval of Construction Delivery Method | November 2019 | November 2019 | ↑ | - |
| Student Occupancy | August 2022 | August 2022 | ↑ | - |

4.5 Phase 4

Preston Ridge (Existing Repurpose)

| Activity | Baseline Finish | Planned Finish | | Actual Finish |
|--|-----------------|----------------|---|---------------|
| BOT Approval of Program Manager | October 2021 | October 2021 | ↑ | - |
| BOT Approval of A/E Procurement Method | October 2021 | October 2021 | ↑ | - |
| BOT Approval of Construction Delivery Method | October 2021 | October 2021 | ↑ | - |
| Student Occupancy | August 2023 | August 2023 | ↑ | - |

Central Park (Existing Repurpose)

| Activity | Baseline Finish | Planned Finish | | Actual Finish |
|--|-----------------|----------------|---|---------------|
| BOT Approval of Program Manager | October 2021 | October 2021 | ↑ | - |
| BOT Approval of A/E Procurement Method | October 2021 | October 2021 | ↑ | - |
| BOT Approval of Construction Delivery Method | October 2021 | October 2021 | ↑ | - |
| Student Occupancy | August 2023 | August 2023 | ↑ | - |

Central Park (Traffic / Wayfinding)

| Activity | Baseline Finish | Planned Finish | | Actual Finish |
|--|-----------------|----------------|---|---------------|
| BOT Approval of Program Manager | October 2021 | October 2021 | ↑ | - |
| BOT Approval of A/E Procurement Method | October 2021 | October 2021 | ↑ | - |
| BOT Approval of Construction Delivery Method | October 2021 | October 2021 | ↑ | - |
| Student and Staff Use | August 2023 | August 2023 | ↑ | - |

Preston Ridge (Wayfinding)

| Activity | Baseline Finish | Planned Finish | | Actual Finish |
|--|-----------------|----------------|---|---------------|
| BOT Approval of Program Manager | October 2021 | October 2021 | ↑ | - |
| BOT Approval of A/E Procurement Method | October 2021 | October 2021 | ↑ | - |
| BOT Approval of Construction Delivery Method | October 2021 | October 2021 | ↑ | - |
| Student and Staff Use | August 2023 | August 2023 | ↑ | - |

Spring Creek (Wayfinding)

| Activity | Baseline Finish | Planned Finish | | Actual Finish |
|--|-----------------|----------------|---|---------------|
| BOT Approval of Program Manager | October 2021 | October 2021 | ↑ | - |
| BOT Approval of A/E Procurement Method | October 2021 | October 2021 | ↑ | - |
| BOT Approval of Construction Delivery Method | October 2021 | October 2021 | ↑ | - |
| Student and Staff Use | August 2023 | August 2023 | ↑ | - |

5. Budget

5.1 Program Summary

Program Wide Budget

| Budget Group | Original Budget | Current Budget | Commitments | Expenditures | % of Budget Committed | % of Commitment Expended |
|--|----------------------|----------------------|---------------------|--------------------|-----------------------|--------------------------|
| Management, Design, & Pre-Construction | \$105,160,598 | \$100,173,017 | \$24,558,900 | \$1,839,321 | 25% | 7% |
| Investigation, Testing & Verification | \$9,330,450 | \$9,330,450 | \$90,710 | \$34,210 | 1% | 38% |
| Construction, Equipment & Furnishings | \$463,778,252 | \$463,778,252 | \$0 | \$0 | 0% | 0% |
| Misc. | \$439,079 | \$452,778 | \$16,414 | \$13,699 | 4% | 83% |
| Contingency | \$21,291,621 | \$26,265,504 | \$0 | \$0 | 0% | 0% |
| Total Project Budget | \$600,000,000 | \$600,000,000 | \$24,666,024 | \$1,887,229 | | |
| % of Total Project Budget Committed | 4.11% | | | | | |
| % of Total Commitments Expended | 7.65% | | | | | |
| % of Total Project Budget Expended | 0.31% | | | | | |

5.2 Phase 1

Wylie Campus

| Budget Group | Original Budget | Current Budget | Commitments | Expenditures | % of Budget Committed | % of Commitment Expended |
|--|----------------------|----------------------|---------------------|--------------------|-----------------------|--------------------------|
| Management, Design, & Pre-Construction | \$15,051,440 | \$12,678,467 | \$12,568,145 | \$1,064,442 | 99% | 8% |
| Investigation, Testing & Verification | \$2,679,247 | \$2,679,247 | \$61,150 | \$8,100 | 2% | 13% |
| Construction, Equipment & Furnishings | \$133,174,284 | \$133,174,284 | \$0 | \$0 | 0% | 0% |
| Misc. | \$126,082 | \$132,931 | \$7,582 | \$6,849 | 6% | 90% |
| Contingency | \$6,571,649 | \$8,937,773 | \$0 | \$0 | 0% | 0% |
| Total Project Budget | \$157,602,702 | \$157,602,702 | \$12,636,877 | \$1,079,391 | | |
| % of Total Project Budget Committed | 8.02% | | | | | |
| % of Total Commitments Expended | 8.54% | | | | | |
| % of Total Project Budget Expended | 0.68% | | | | | |

Technical Campus

| Budget Group | Original Budget | Current Budget | Commitments | Expenditures | % of Budget Committed | % of Commitment Expended |
|--|----------------------|----------------------|---------------------|------------------|-----------------------|--------------------------|
| Management, Design, & Pre-Construction | \$14,713,206 | \$12,098,598 | \$11,990,755 | \$774,879 | 99% | 6% |
| Investigation, Testing & Verification | \$2,619,039 | \$2,619,039 | \$29,560 | \$26,110 | 1% | 88% |
| Construction, Equipment & Furnishings | \$130,181,602 | \$130,181,602 | \$0 | \$0 | 0% | 0% |
| Misc. | \$123,249 | \$130,098 | \$8,832 | \$6,849 | 7% | 78% |
| Contingency | \$6,423,972 | \$9,031,731 | \$0 | \$0 | 0% | 0% |
| Total Project Budget | \$154,061,068 | \$154,061,068 | \$12,029,147 | \$807,838 | | |
| % of Total Project Budget Committed | 7.81% | | | | | |
| % of Total Commitments Expended | 6.72% | | | | | |
| % of Total Project Budget Expended | 0.52% | | | | | |

5.3 Phase 2

Celina Campus

| Budget Group | Original Budget | Current Budget | Commitments | Expenditures | % of Budget Committed | % of Commitment Expended |
|-------------------------------------|---------------------|---------------------|-------------|--------------|-----------------------|--------------------------|
| Total Project Budget | \$55,112,263 | \$55,112,263 | \$0 | \$0 | | |
| % of Total Project Budget Committed | 0.00% | | | | | |
| % of Total Commitments Expended | 0.00% | | | | | |
| % of Total Project Budget Expended | 0.00% | | | | | |

Farmersville Campus

| Budget Group | Original Budget | Current Budget | Commitments | Expenditures | % of Budget Committed | % of Commitment Expended |
|-------------------------------------|---------------------|---------------------|-------------|--------------|-----------------------|--------------------------|
| Total Project Budget | \$27,556,132 | \$27,556,132 | \$0 | \$0 | | |
| % of Total Project Budget Committed | 0.00% | | | | | |
| % of Total Commitments Expended | 0.00% | | | | | |
| % of Total Project Budget Expended | 0.00% | | | | | |

Preston Ridge Campus (IT Center of Excellence)

| Budget Group | Original Budget | Current Budget | Commitments | Expenditures | % of Budget Committed | % of Commitment Expended |
|-------------------------------------|---------------------|---------------------|-------------|--------------|-----------------------|--------------------------|
| Total Project Budget | \$59,388,215 | \$59,388,215 | \$0 | \$0 | | |
| % of Total Project Budget Committed | 0.00% | | | | | |
| % of Total Commitments Expended | 0.00% | | | | | |
| % of Total Project Budget Expended | 0.00% | | | | | |

5.4 Phase 3

Preston Ridge Campus (Welcome Center)

| Budget Group | Original Budget | Current Budget | Commitments | Expenditures | % of Budget Committed | % of Commitment Expended |
|-------------------------------------|---------------------|---------------------|-------------|--------------|-----------------------|--------------------------|
| Total Project Budget | \$26,329,788 | \$26,329,788 | \$0 | \$0 | | |
| % of Total Project Budget Committed | 0.00% | | | | | |
| % of Total Commitments Expended | 0.00% | | | | | |
| % of Total Project Budget Expended | 0.00% | | | | | |

Central Park Campus (Welcome Center)

| Budget Group | Original Budget | Current Budget | Commitments | Expenditures | % of Budget Committed | % of Commitment Expended |
|-------------------------------------|---------------------|---------------------|-------------|--------------|-----------------------|--------------------------|
| Total Project Budget | \$36,861,704 | \$36,861,704 | \$0 | \$0 | | |
| % of Total Project Budget Committed | 0.00% | | | | | |
| % of Total Commitments Expended | 0.00% | | | | | |
| % of Total Project Budget Expended | 0.00% | | | | | |

5.5 Phase 4

Preston Ridge (Existing Repurpose)

| Budget Group | Original Budget | Current Budget | Commitments | Expenditures | % of Budget Committed | % of Commitment Expended |
|-------------------------------------|--------------------|--------------------|-------------|--------------|-----------------------|--------------------------|
| Total Project Budget | \$7,321,091 | \$7,321,091 | \$0 | \$0 | | |
| % of Total Project Budget Committed | 0.00% | | | | | |
| % of Total Commitments Expended | 0.00% | | | | | |
| % of Total Project Budget Expended | 0.00% | | | | | |

Central Park (Existing Repurpose)

| Budget Group | Original Budget | Current Budget | Commitments | Expenditures | % of Budget Committed | % of Commitment Expended |
|-------------------------------------|--------------------|--------------------|-------------|--------------|-----------------------|--------------------------|
| Total Project Budget | \$9,151,364 | \$9,151,364 | \$0 | \$0 | | |
| % of Total Project Budget Committed | 0.00% | | | | | |
| % of Total Commitments Expended | 0.00% | | | | | |
| % of Total Project Budget Expended | 0.00% | | | | | |

Central Park (Traffic / Wayfinding)

| Budget Group | Original Budget | Current Budget | Commitments | Expenditures | % of Budget Committed | % of Commitment Expended |
|-------------------------------------|--------------------|--------------------|-------------|--------------|-----------------------|--------------------------|
| Total Project Budget | \$7,826,795 | \$7,826,795 | \$0 | \$0 | | |
| % of Total Project Budget Committed | 0.00% | | | | | |
| % of Total Commitments Expended | 0.00% | | | | | |
| % of Total Project Budget Expended | 0.00% | | | | | |

Preston Ridge (Wayfinding)

| Budget Group | Original Budget | Current Budget | Commitments | Expenditures | % of Budget Committed | % of Commitment Expended |
|-------------------------------------|--------------------|--------------------|-------------|--------------|-----------------------|--------------------------|
| Total Project Budget | \$2,546,293 | \$2,546,293 | \$0 | \$0 | | |
| % of Total Project Budget Committed | 0.00% | | | | | |
| % of Total Commitments Expended | 0.00% | | | | | |
| % of Total Project Budget Expended | 0.00% | | | | | |

Spring Creek (Wayfinding)

| Budget Group | Original Budget | Current Budget | Commitments | Expenditures | % of Budget Committed | % of Commitment Expended |
|-------------------------------------|--------------------|--------------------|-------------|--------------|-----------------------|--------------------------|
| Total Project Budget | \$5,092,585 | \$5,092,585 | \$0 | \$0 | | |
| % of Total Project Budget Committed | 0.00% | | | | | |
| % of Total Commitments Expended | 0.00% | | | | | |
| % of Total Project Budget Expended | 0.00% | | | | | |

5.6 Building Fund Reimbursement

Building Fund Reimbursement

| Budget Group | Original Budget | Current Budget | Commitments | Expenditures | % of Budget Committed | % of Commitment Expended |
|-------------------------------------|---------------------|---------------------|-------------|--------------|-----------------------|--------------------------|
| Building Fund Reimbursement | \$51,150,000 | \$51,150,000 | \$0 | \$0 | \$0 | \$0 |
| Total Project Budget | \$51,150,000 | \$51,150,000 | \$0 | \$0 | | |
| % of Total Project Budget Committed | 0.00% | | | | | |
| % of Total Commitments Expended | 0.00% | | | | | |
| % of Total Project Budget Expended | 0.00% | | | | | |

6. Completed Items

6.1 General Program

- Professional Services & Construction Opportunities Outreach Event was held on October 17th at the Spring Creek Conference Center.
- AECOM conducted Coordination Meetings, with Collin College Leadership and Procurement on October 2nd, 9th, 16th, 23rd & 30th
- AECOM provided an overview of the September Monthly Report to the Collin Campus Facilities & Construction Committee on October 17th
- AECOM provided an overview of the Program Website to Collin College Leadership on October 19th
- AECOM provided an overview of the September Monthly Report to the Collin College Board of Trustees on October 24th

6.2 Procurement

- AECOM and Collin College debriefed Adolfson & Peterson Construction on Phase 1 procurement on October 3rd
- AECOM and Collin College debriefed Perkins+Will, Inc. on Phase 1 procurement on October 5th
- AECOM and Collin College issued a Request for Qualifications (RFQ) for Commissioning Services on October 13th
- AECOM and Collin College debriefed McCarthy Building Companies, Inc. on Phase 1 procurement on October 19th
- AECOM and Collin College debriefed Moody Nolan on Phase 1 procurement on October 25th
- AECOM and Collin College issued Addendum No. 1 for Commissioning RFQ on October 31st

6.3 Design

- AECOM conducted a meeting with the City of Wylie to discuss development of the Wylie Campus on October 10th
- Page Southerland Page, Inc. conducted an all-day Programming Workshop with AECOM and Collin College for the Wylie Campus on October 11th
- Perkins+Will, Inc. conducted a half-day Conceptual Design Workshop with AECOM and Collin College for the Technical Campus on October 12th
- AECOM met with Allen ISD on October 13th to discuss construction costs for the upcoming agreement between Collin College and Allen ISD for the Technical Campus
- AECOM conducted a meeting on October 23rd with Collin College and the Mechanical, Electrical & Plumbing Engineer under Perkins+Will, Inc. for the Technical Campus
- Perkins+Will, Inc. conducted a half-day Conceptual Design Workshop with AECOM and Collin College for the Technical Campus on October 26th
- Page Southerland Page, Inc. conducted an all-day Conceptual Design Workshop with AECOM and Collin College for the Wylie Campus on October 27th
- AECOM conducted a meeting on October 31st with Collin College and the Mechanical, Electrical & Plumbing Engineer and Civil Engineer under Page Southerland Page, Inc. for the Wylie Campus to review site utility layouts

6.4 Pre-Construction

- [AECOM conducted a schedule planning meeting with Perkins+Will, Inc. and McCarthy Building Companies, Inc. on October 25th](#)

6.5 Construction

- No Construction activities are underway at this time

6.6 Acceptance and Close-Out

- No Acceptance and Close-Out Phase Items are complete

7. Pending Items

7.1 General Program

- Development of a Program Procedures Manual (PPM) is under development
- [Approval of the Facility Standards by Collin College is underway](#)

7.2 Procurement

- [Receipt and review of Commissioning RFQ responses](#)

7.3 Design

- Completion and acceptance of programming for the Wylie Campus
- Completion and acceptance of programming for the Technical Campus

7.4 Pre-Construction

- Development of a cost management plan & preliminary estimate are underway by Skanska USA Building, Inc. for the Wylie Campus
- Development of a cost management plan & preliminary estimate are underway by McCarthy Building Companies, Inc. for the Technical Campus

7.5 Construction

- No Construction activities are underway at this time

7.6 Acceptance and Close-Out

- No Acceptance and Close-Out activities are underway at this time

Appendix A – Schedule Milestone Definitions

BOT Approval of Program Manager – Establishes that a project is Board of Trustees approved and the Program Manager shall begin efforts to complete the project.

BOT Approval of A/E Procurement Method – Approval by the Board of Trustees of the methods used to procure the Architect.

BOT Approval of Construction Delivery Method – Approval by the Board of Trustees of the construction delivery method. Typically Construction Manager-at-Risk or Competitive Sealed Proposal.

BOT Approval of Recommended Firms – Acceptance of firm recommendations by the Board of Trustees.

Architect Mobilized – Completion of negotiations, execution of contracts, and issuance of Notice to Proceed.

Schematic Design Submittal – Initial design schemes that seek to define the general scope and conceptual design of the project including scale and relationships between building components.

Design Development Submittal – Site Plans, Elevations & Floorplans that define and describe all important aspects of the project.

Construction Document Submittal – Detailed specifications, details, illustrations, and instructions on all aspects of the facility. Used to obtain project bids and to construct the facility.

BOT Approval of GMP (Site) – Board of Trustees approval of the Guaranteed Maximum Price to complete the site work.

Contractor Mobilized – Notice to Proceed issued for the Site Work. Contractor on site and ready to start.

BOT Approval of GMP (Facility) – Board of Trustees approval of the Guaranteed Maximum Price to complete the facility work.

Foundations Complete – Mass grading & piers complete, project. There after the project is less affected by rain, mud and subterranean conditions.

Building Top Out – All major structural components are in place (including the highest component) for the facility. Project less susceptible to material shortages or delays.

Building Dry-In – Roofing and windows are complete and the building is water resistant. The project overall is less susceptible to weather as most of the work is conducted indoors.

Building Energized – The building has power. This is an indication that utilities are in place, significant electrical work is complete, and many significant city inspections have been passed.

Building Climatized – The HVAC system is functional. Weather sensitive materials can be installed.

Temporary CO – The city has agreed that the building is significantly constructed in accordance with local codes and is occupiable. There may be outstanding landscaping requirements.

Final CO – The city has agreed that the building is constructed in accordance with local codes and is occupiable. There may be outstanding landscaping requirements

Substantial Completion – All materials are in place, all systems are functional, and the owner can use the building for its intended purpose with only minor punch-list items remaining. Warranties will commence.

Final Completion – All punchlist items are complete. The Contractor is complete.

Student Occupancy – Success!