

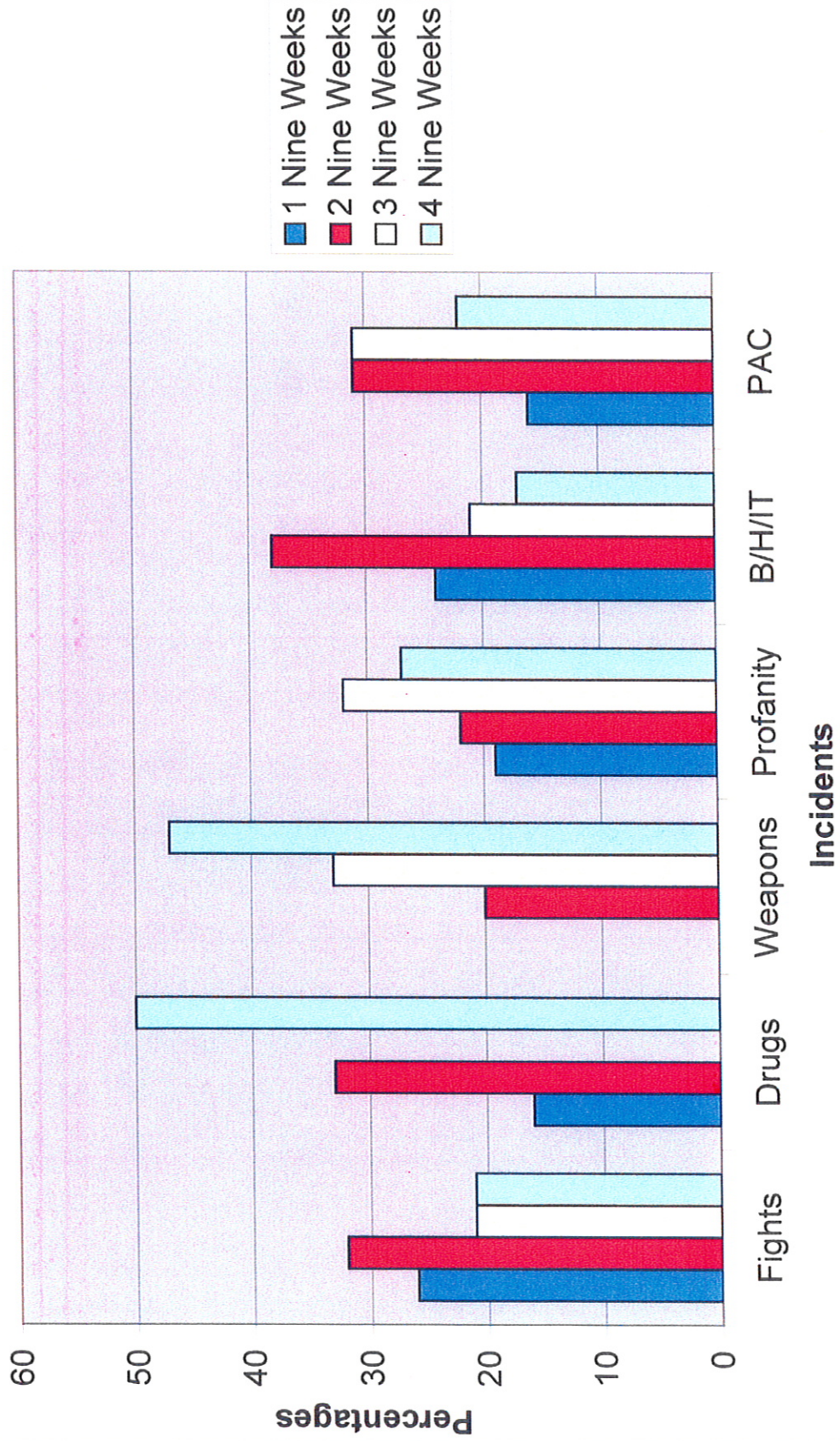
Tupelo Public School District
 2007-2008 Yearly Discipline Report

Schools	Fights	Drugs	Weapons	Profanity	B/H/IT	PAC
<i>Carver</i>	8	1	0	28	16	52
<i>Church Street</i>	4	0	1	5	12	5
<i>Fillmore Center</i>	29	2	1	54	33	3
<i>Joyner</i>	2	0	0	8	2	14
<i>Lawhon</i>	6	0	0	8	33	28
<i>Lawndale</i>	28	0	6	37	90	111
<i>Milam</i>	19	0	1	49	180	190
<i>Parkway</i>	1	0	0	1	1	24
<i>Pierce Street</i>	0	0	0	0	3	2
<i>Rankin</i>	3	0	0	3	8	51
<i>Thomas Street</i>	6	0	0	0	7	0
<i>TMS</i>	32	3	5	107	208	44
<i>THS</i>	17	0	1	110	28	5
Totals	<u>155</u>	<u>6</u>	<u>15</u>	<u>410</u>	<u>621</u>	<u>529</u>

* B/H/T-Bullying/Harrassment/Threats

* PAC-Proactive Counseling

2007-2008 TPSD Discipline Chart



ALTERNATIVE SCHOOL PLACEMENT 2007-2008 - Fourth Nine Weeks

Case #	School	Grade	Race	Age	Charge	DDH	Action	Hearing Date
107	THS	10	WM	16	Continuous Disobedience		Through August 14, 2008	3/25/2008
108	THS	10	BF	16	Continuous Disobedience		Through May 23, 2008	4/2/2008
109	TMS	8	BM	15	Threat towards school		Through May 23, 2008	4/7/2008
110	THS	9	BM	16	Fighting		Through September 4, 2008	4/16/2008
111	THS	9	BM	16	Continuous Disobedience	X	Through September 25, 2008	4/24/2008
112	THS	11	WM	17	Spraying pepper spray/endangering others		Through September 3, 2008	4/18/2008
113	THS	9	WM	15	Fighting		Through September 16, 2008	4/29/2008
114	THS	9	BM	16	Continuous Disobedience		Through May 23, 2008	4/23/2008
115	THS	9	BF	15	Continuous Disobedience		Through October 1, 2008	4/25/2008
116	THS	9	BM	15	Continuous Disobedience		Through October 6, 2008	4/28/2008
117	TMS	8	BM	14	Continuous Disobedience		Through May 23, 2008	4/29/2008
118	THS	9	WM	14	Fighting		Through September 16, 2008	4/29/2008
119	THS	9	WM	14	Possession of a weapon		Through September 18, 2008	4/29/2008
120	TMS	8	BF	13	Fighting		Through October 11, 2008	5/8/2008
121	TMS	8	BM	15	Fighting	X	Through October 11, 2008	5/19/2008
122	THS	11	BM	17	Violation of Drug/Alcohol Testing Policy		Through September 30, 2008	5/13/2008
123	THS	9	BF	15	Fighting		Through October 10, 2008	5/15/2008
124	THS	9	BF	14	Fighting		Through October 10, 2008	5/19/2008
125	THS	10	BF	16	Fighting		Through October 9, 2008	5/21/2008
126	THS	10	BF	16	Fighting	X	Through September 30, 2008	5/21/2008
41	THS	9	BF	16	Violation of Probation		Through May 23, 2008	3/28/2008
39	THS	9	BF	15	Intimidating, Threatening Behavior/Stealing		Through October 10, 2008	3/27/2008
45	TMS	7	BF	12	Possession of a weapon (knife)		Through April 23, 2009	4/24/2008
9	THS	9	WF	15	JLCK Policy		Pending Psychological Evaluation	4/24/2008
80	THS	9	BF	15	Continuous Disobedience/Violation of Probation		Through October 10, 2008	5/15/2008
SPEID	THS	9	WM	16	Intimidating, Threatening Behavior		Through May 23, 2008	3/26/2008
SPEID	TMS	8	BM	15	Violation of Probation		Through May 23, 2008	3/25/2008

SPED	THS	9	BM	17	Least restrictive environment		Through May 23, 2008	3/18/2008
SPED	THS	9	BF	17	Violation of Probation		Through August 29, 2008	4/16/2008
SPED	THS	9	BM	16	Fighting	X	Through August 29, 2008	4/17/2008
SPED	TMS	7	WM	13	JCK Policy		Through May 23, 2008	4/25/2008
SPED	TMS	8	BM	14	Continuous Disobedience		Through May 23, 2008	4/25/2008
SPED	TMS	8	BM	14	Continuous Disobedience		Through December 19, 2008	5/8/2008
SPED	TMS	7	BM	13	Continuous Disobedience		Through October 10, 2008	5/6/2008
SPED	Milam	6	BM	12	Continuous Disobedience		Through April 4, 2008	3/17/2008
SPED	Lawndale	6	BM	12	Continuous Disobedience		Through May 23, 2008	3/20/2008
SPED	Carver	6	BM	13	Continuous Disobedience		Through May 2, 2008	4/4/2008
SPED	Lawndale	6	BF	12	Violation of Probation		Through May 23, 2008	4/10/2008
SPED	Milam	4	BF	11	Continual Disruptions		Through April 28, 2008	4/10/2008
SPED	Carver	6	BF	12	Possession of contraband		Through April 9, 2009	4/9/2008
SPED	Lawndale	6	BM	12	Violation of Probation		Through May 23, 2008	4/9/2008
SPED	Lawndale	5	BM	12	Possession of a weapon while walking to school	X	Through April 23, 2009	4/30/2008
SPED	Lawndale	6	BM	12	Possession of a weapon while walking to school	X	Through April 23, 2009	4/30/2008
SPED	Milam	5	BM	11	Possession of a weapon (knife)		Through April 27, 2009	4/22/2008
SPED	Carver	6	BM	13	Continuous Disobedience/Violation of Probation		Through May 22, 2008	4/28/2008
SPED	Carver	6	WM	12	Continuous Disobedience/Violation of Probation		Through May 23, 2008	4/29/2008
SPED	Milam	4	BM	10	Continuous Disobedience		Through May 20, 2008	4/30/2008
SPED	Carver	5	BM	11	Shoving principal		Through May 23, 2008	5/13/2008
SPED	Lawndale	6	BM	13	Continuous Disobedience		Through October 6, 2008	5/19/2008
SPED	Lawndale	4	BM	10	Possession of a weapon (knife)	X	Through May 22, 2009	5/27/2008
SPED	Lawndale	5	WM	11	Possession of a weapon (knife)	X	Through May 22, 2009	5/30/2008

2007-2008 Disciplinary Hearings for the Fourth Nine Weeks - 56

Summary Breakdown

School Site Disciplinary Hearings - 43

*District Disciplinary Hearings (DDH) - 13

Five of the Hearings were recommended for other placement