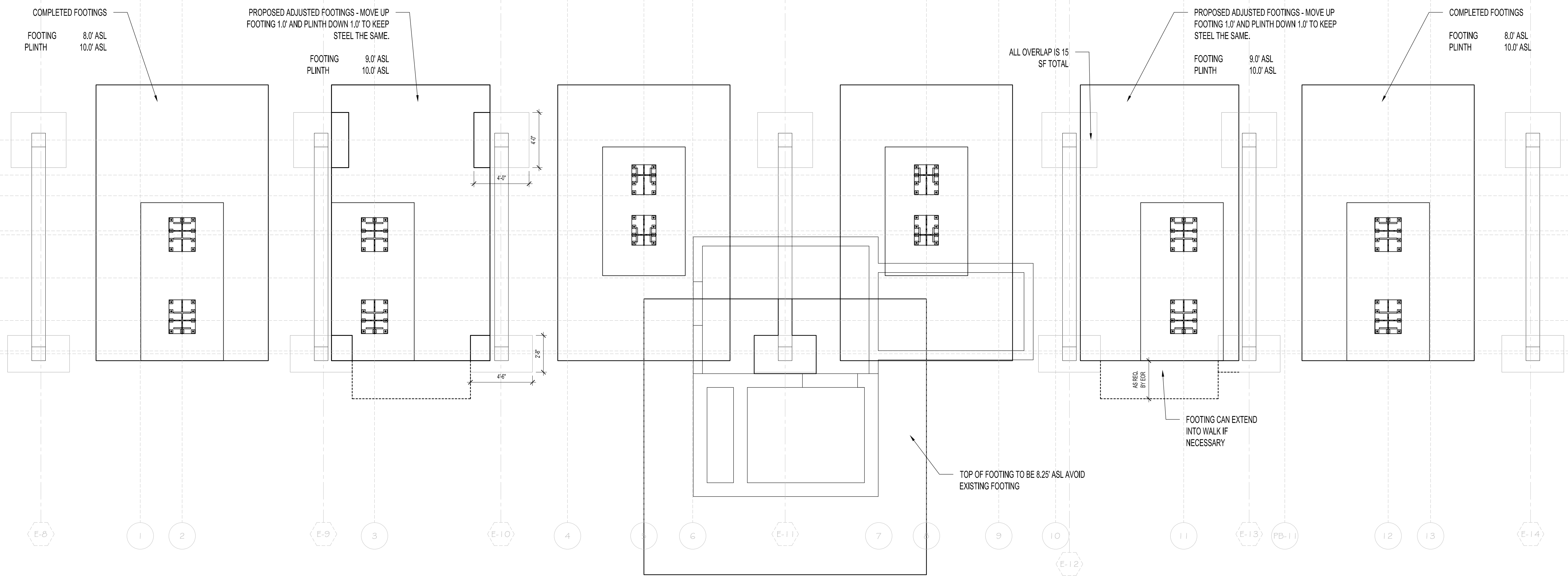


5 PB FOUNDATION SECTION

SCALE: 1/2" = 1'-0"



5 PB FOUNDATION PLAN

SCALE: 1/4" = 1'-0"

INTERIM REVIEW ONLY
(DOCUMENT INCOMPLETE)
NOT TO BE USED FOR
REGULATORY APPROVAL,
PERMIT, OR CONSTRUCTION.

5.13.24
DISCLAIMER-DATE

1	CORRECTED FOOTING HEIGHT	5.13
No.	Description	Date:

REVISIONS

**GALVESTON ISD
COURVILLE STADIUM**

RFI18 REV1

DRAWN BY: JTB

5.13.24

RFI18