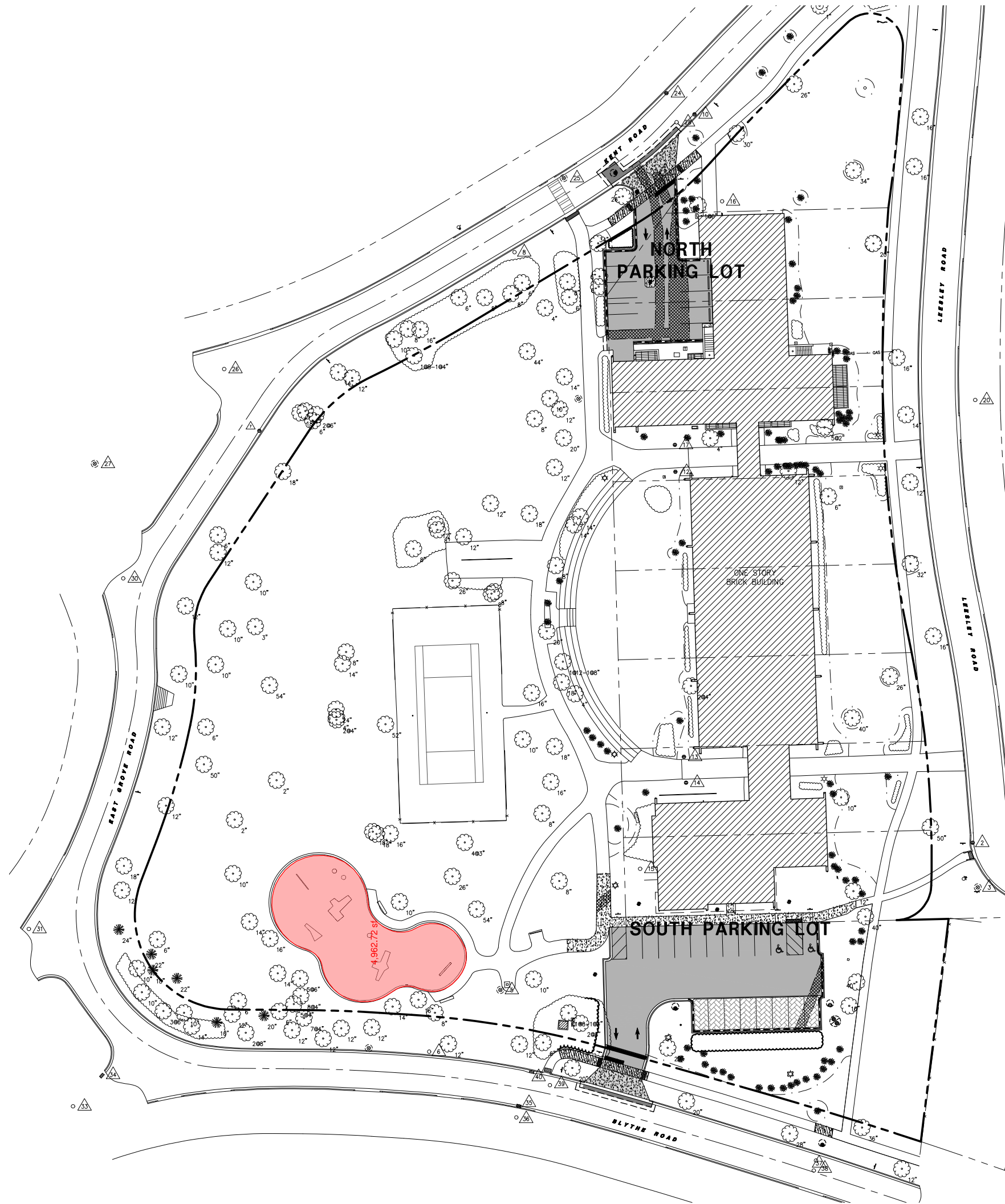




# BLYTHE PARK PLAYGROUND REPLACEMENT PROJECT

Riverside School District 96

MAY 21, 2025



HATCH LEGEND

- NEW ASPHALT PAVEMENT  
1-3/4" HMA SURFACE COURSE  
2-1/4" HMA BINDER COURSE  
10" CA-6 BASE COURSE
- NEW ASPHALT ROADWAY PAVEMENT  
2" HMA SURFACE COURSE  
2" HMA BINDER COURSE  
8" PORTLAND CEMENT CONCRETE  
4" CA-6 BASE COURSE
- NEW 5" CONCRETE SIDEWALK  
5" PORTLAND CEMENT CONCRETE  
4" CA-6 BASE COURSE  
EXPOSED 6:1 BAG PEA GRAVEL MIX  
AGGREGATE CONCRETE TO BE PROVIDED IN ALL SIDEWALKS IN THE RIGHT-OF-WAY.
- NEW 8" CONCRETE PAVEMENT  
8" PORTLAND CEMENT CONCRETE  
4" CA-6 BASE COURSE
- NEW PERMEABLE PAVERS  
SEE DETAIL

PARKING MATRIX

PARKING STALLS	NON-ADA	ADA	TOTAL
PROPOSED	26	2	28
EXISTING	10	2	12

CALL JULIE TOLL FREE  
(800)842-0123  
OPERATES 24 HOURS A  
DAY 365 DAYS A YEAR



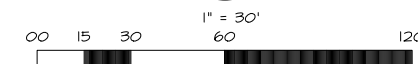
CALL  
(800)842-0123  
48 HOURS BEFORE  
YOU DIG

CONTRACTOR MUST LOCATE PRIVATE UTILITIES IN AREA  
OF CONSTRUCTION PRIOR TO PROCEEDING WITH WORK

BENCHMARKS:

- SITE BENCHMARK #1 - SET CROSS ON BURY BOLT OF HYDRANT LOCATED IN GRASS  
APPROXIMATELY 12.6' SW OF LEESLEY ROAD AND 8.4' NW OF  
MANHOLE #3, AS SHOWN ON SHEET SUR-3.  
ELEVATION = 614.86 (NAVDS88)
- SITE BENCHMARK #2 - SET CROSS ON BURY BOLT OF HYDRANT LOCATED IN GRASS  
APPROXIMATELY 6.6' NW OF KENT ROAD AND 10.8' NE OF CONCRETE  
DRIVE, AS SHOWN ON SHEET SUR-2.  
ELEVATION = 618.66 (NAVDS88)
- SITE BENCHMARK #3 - CUT SQUARE ON SOUTH CORNER OF CONCRETE LIGHT POLE BASE  
LOCATED AT THE SOUTH EDGE OF PARKING LOT APPROXIMATELY 40'  
NE OF BLYTHE ROAD AND 57.4' ESE OF NE CORNER OF  
TRANSFORMER, AS SHOWN ON SHEET SUR-3.  
ELEVATION=616.25 (NAVDS88)

NOTE: BEING THAT THIS PROJECT IS PERMITTED UNDER THE NEW  
WATERSHED MANAGEMENT ORDINANCE (WMO), THE WMO  
REQUIRES 48 HOURS OF ADVANCE NOTIFICATION PRIOR TO ANY  
GROUND DISTURBANCE. THE WMO WILL BE INSPECTING FOR  
APPLICABLE EROSION CONTROL AND SEDIMENT CONTROL  
MEASURES SUCH AS SILT FENCING, INLET PROTECTION, CONCRETE  
WASH, ETC., FOLLOWED BY SANITARY SEWER AND VOLUME  
CONTROL INSTALLATION INSPECTIONS. PLEASE REFER TO THE  
APPROVED PERMIT/PLANS AND HAVE THESE MEASURES IN PLACE  
IN ACCORDANCE WITH THE SPECIFICATIONS.



WT JOB NUMBER - C2200045

**WT Group**  
Engineering • Design • Consulting

Structural | Mechanical | Electrical | Plumbing  
Civil | Land Survey | Telecommunication | Acoustic  
Accessibility Consulting | Design & Program Management  
Engineering with Precision, Pace & Passion.

2875 Pratum Avenue | Hoffman Estates, IL 60112  
P: 224.293.6333 | F: 224.293.6444  
wtengineering.com

IL License No: 184.007970-0115 | Exp: 04.30.2023  
©COPYRIGHT 2023 THE WT GROUP, LLC

ALTERNATE #1







