

# Visualizing Data

powered by



# CIC Analysis Portal

## Assessment Examples



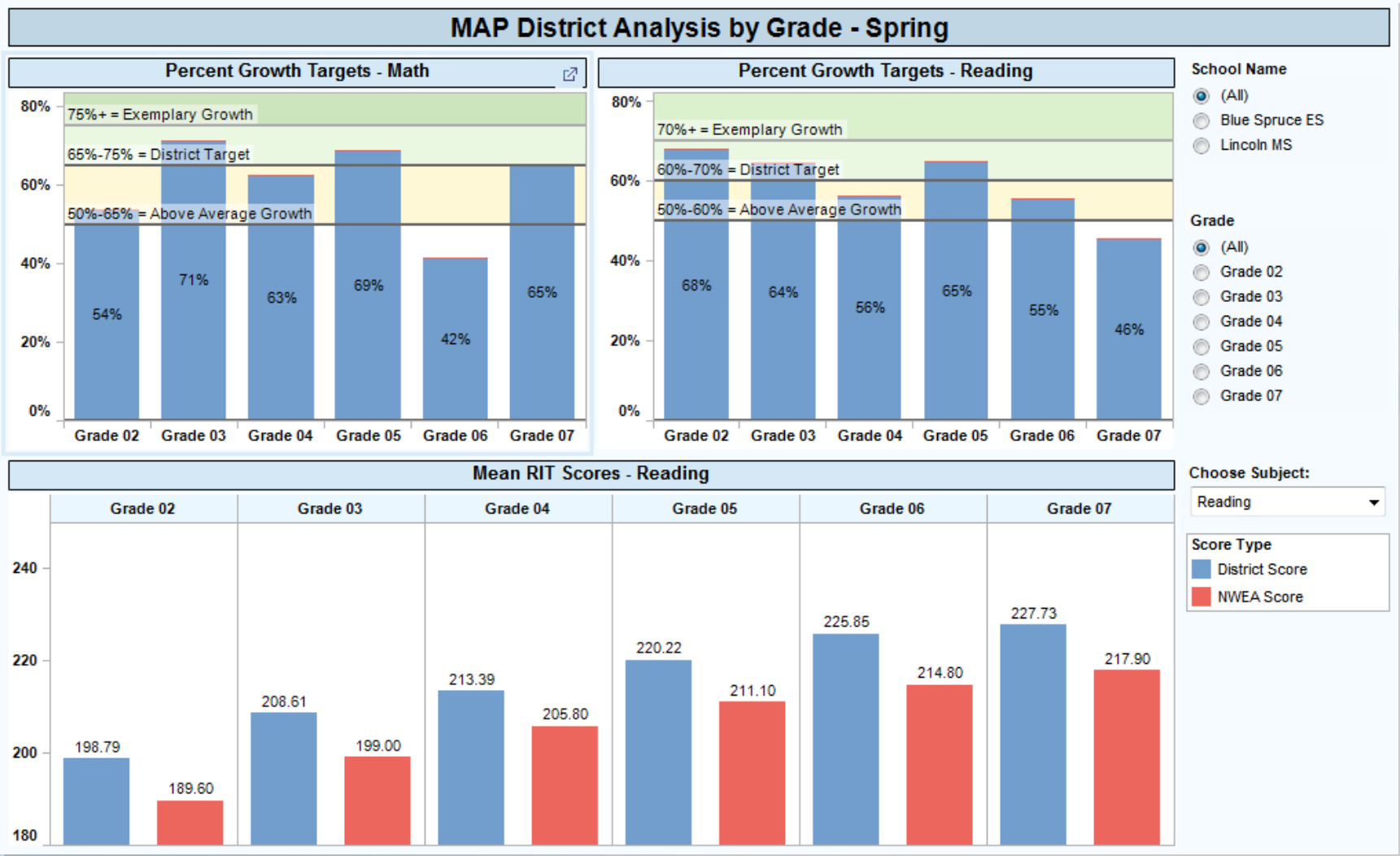
# ACT Analysis



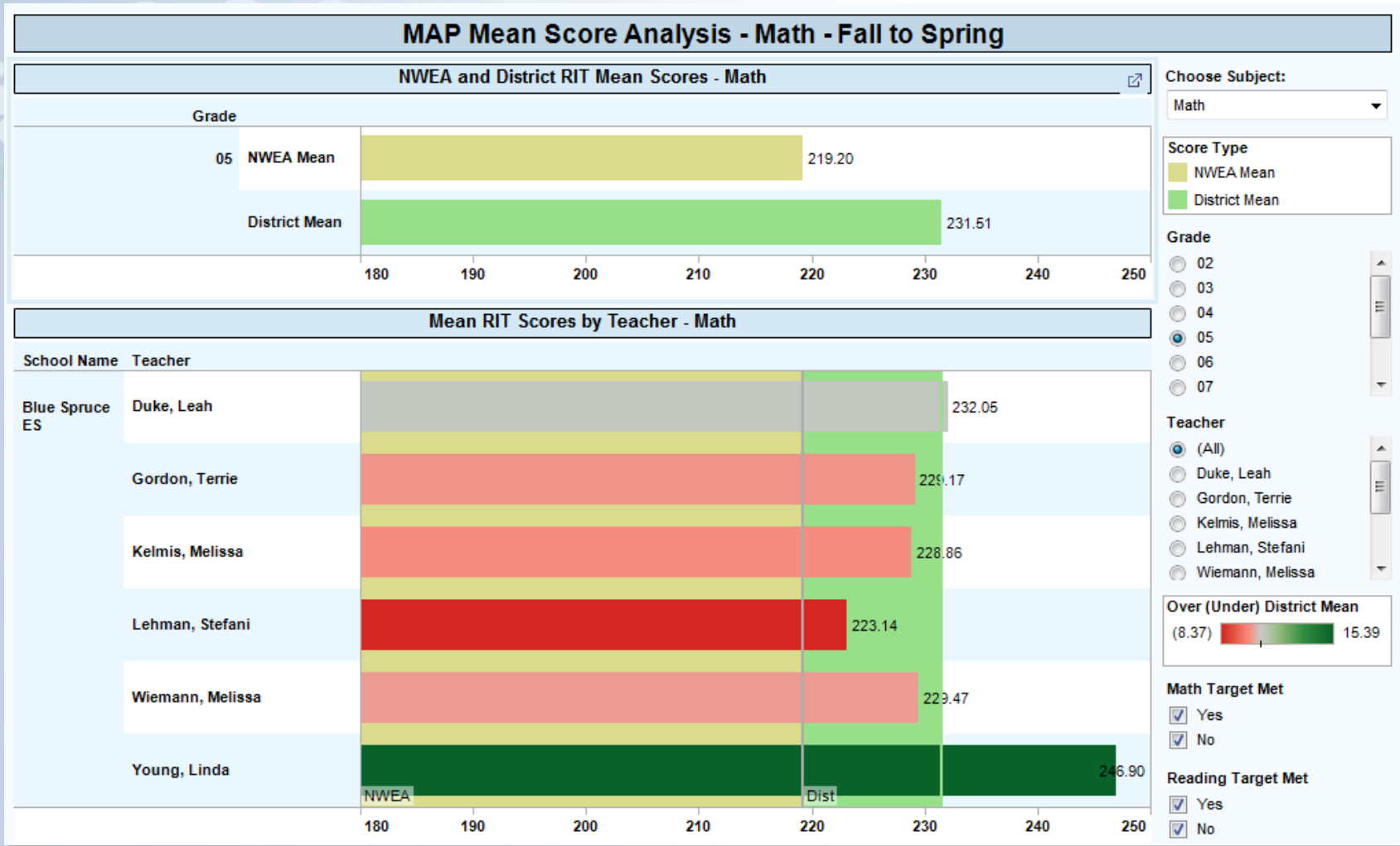
## ACT College Readiness and Participation



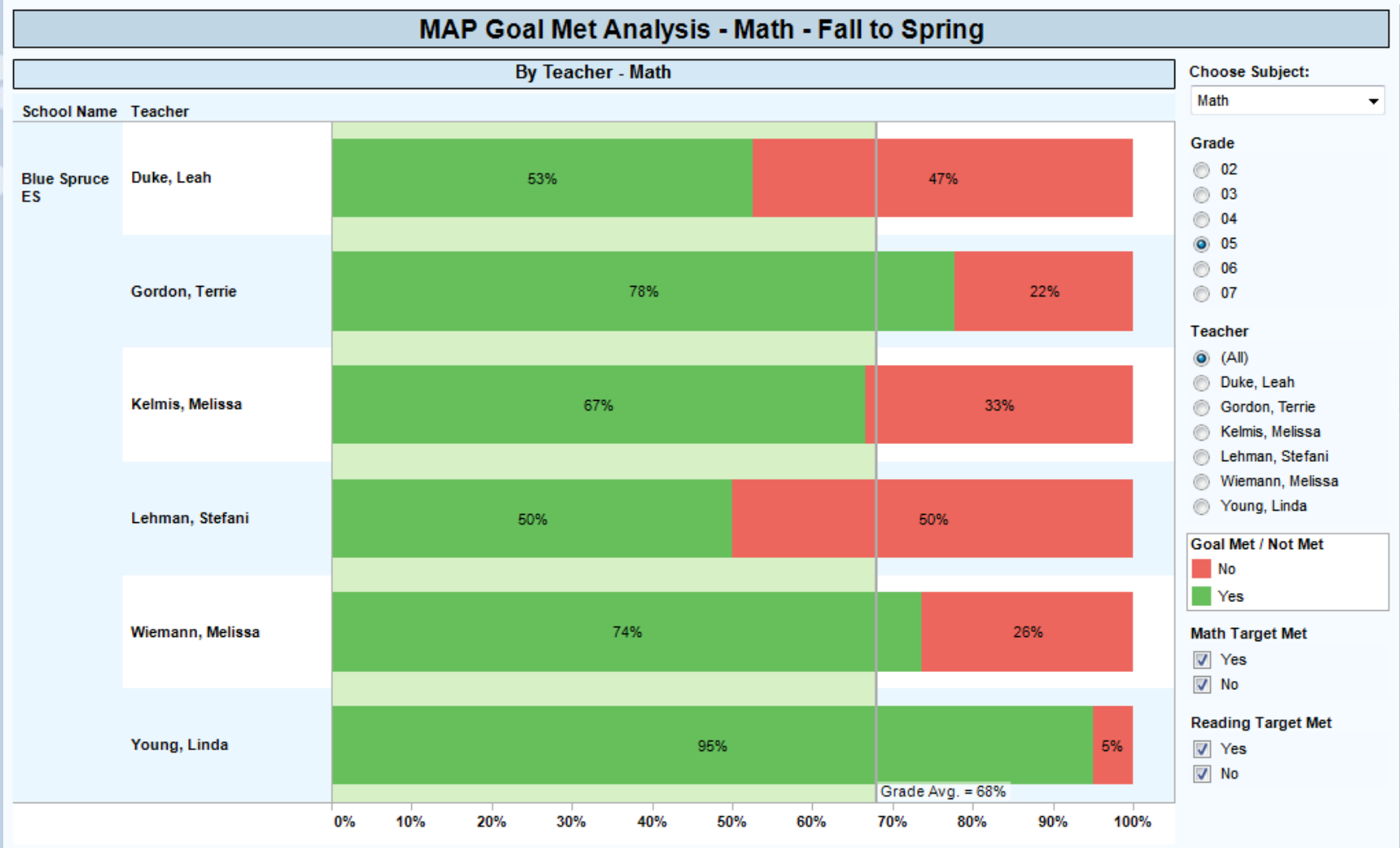
# MAP Community Analysis



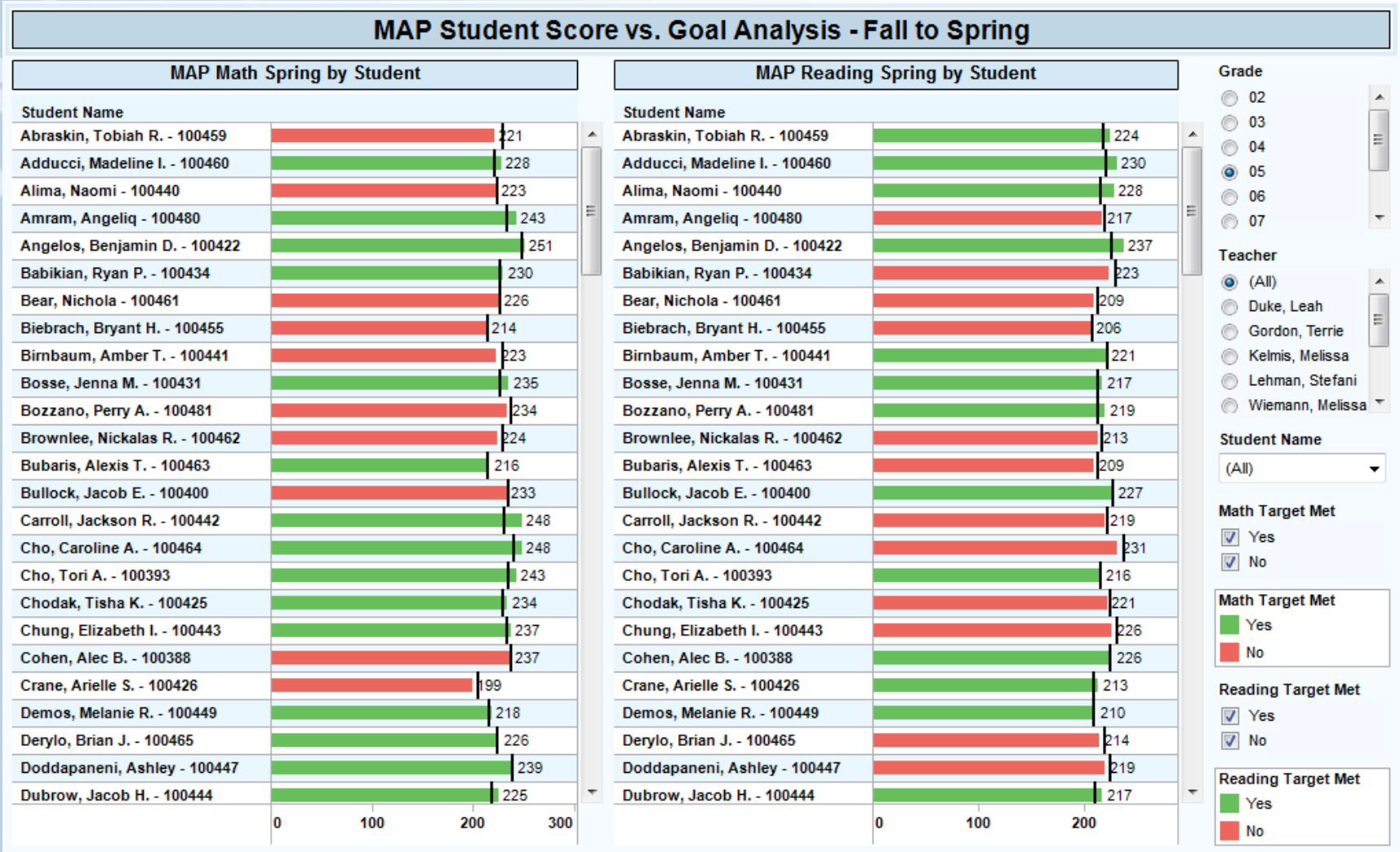
# MAP Teacher / Target Analysis - Mean



# MAP Teacher / Target – Goal %



# MAP Student Score vs. Goal



# MAP Student Detail Scores



## MAP Student Detail Scores - Fall to Spring

Grade	Student Name	Math Target Met	Reading Target Met	Math FA10 RIT	Math SP11 Target Growth	Math SP11 Target RIT	Math SP11 Test RIT	Math Index (SP - Tgt)	Read FA10 RIT	Read SP11 Target Growth	Read SP11 Target RIT	Read SP11 Test RIT	Read Index (SP - Tgt)
05	Abraskin, Tobiah R. - 100459	No	Yes	222	7	229	221	-8	214	4	218	224	6
	Adducci, Madeline I. - 100460	Yes	Yes	214	8	222	228	6	216	4	220	230	10
	Alima, Naomi - 100440	No	Yes	216	8	224	223	-1	211	4	215	228	13
	Amram, Angeliq - 100480	Yes	No	227	7	234	243	9	215	4	219	217	-2
	Angelos, Benjamin D. - 100422	Yes	Yes	244	5	249	251	2	222	3	225	237	12
	Babikian, Ryan P. - 100434	Yes	No	220	7	227	230	3	226	3	229	223	-6
	Bear, Nichola - 100461	No	No	220	7	227	226	-1	208	5	213	209	-4
	Biebrach, Bryant H. - 100455	No	No	207	8	215	214	-1	202	5	207	206	-1
	Birnbaum, Amber T. - 100441	No	Yes	222	7	229	223	-6	217	4	221	221	0
	Bosse, Jenna M. - 100431	Yes	Yes	220	7	227	235	8	208	5	213	217	4
	Bozzano, Perry A. - 100481	No	Yes	230	7	237	234	-3	208	5	213	219	6
	Brownlee, Nickalas R. - 100462	No	No	223	7	230	224	-6	212	4	216	213	-3
	Bubaris, Alexis T. - 100463	Yes	No	206	8	214	216	2	207	5	212	209	-3
	Bullock, Jacob E. - 100400	No	Yes	228	7	235	233	-2	224	3	227	227	0
	Carroll, Jackson R. - 100442	Yes	No	224	7	231	248	17	217	4	221	219	-2
	Cho, Caroline A. - 100464	Yes	No	234	6	240	248	8	235	2	237	231	-6
	Cho, Tori A. - 100393	Yes	Yes	228	7	235	243	8	211	4	215	216	1
	Chodak, Tisha K. - 100425	Yes	No	223	7	230	234	4	220	4	224	221	-3
	Chung, Elizabeth I. - 100443	Yes	No	227	7	234	237	3	228	3	231	226	-5
	Cohen, Alec B. - 100388	No	Yes	232	6	238	237	-1	220	4	224	226	2
	Crane, Arielle S. - 100426	No	Yes	198	7	205	199	-6	203	5	208	213	5
	Demos, Melanie R. - 100449	Yes	Yes	208	8	216	218	2	204	5	209	210	1
	Derylo, Brian J. - 100465	Yes	No	216	8	224	226	2	215	4	219	214	-5
	Doddapaneni, Ashley - 100447	Yes	No	233	6	239	239	0	220	4	224	219	-5
	Dubrow, Jacob H. - 100444	Yes	Yes	211	8	219	225	6	205	5	210	217	7
	Duelfer, Mason A. - 100482	No	No	199	7	206	202	-4	194	7	201	188	-13

Grade

- 02
- 03
- 04
- 05
- 06
- 07

Teacher

- (All)
- Duke, Leah
- Gordon, Terrie
- Kelmis, Melissa
- Lehman, Stefani
- Wiemann, Melissa

Student Name

(All)

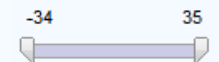
Math Target Met

- Yes
- No

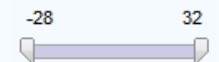
Reading Target Met

- Yes
- No

Math Index

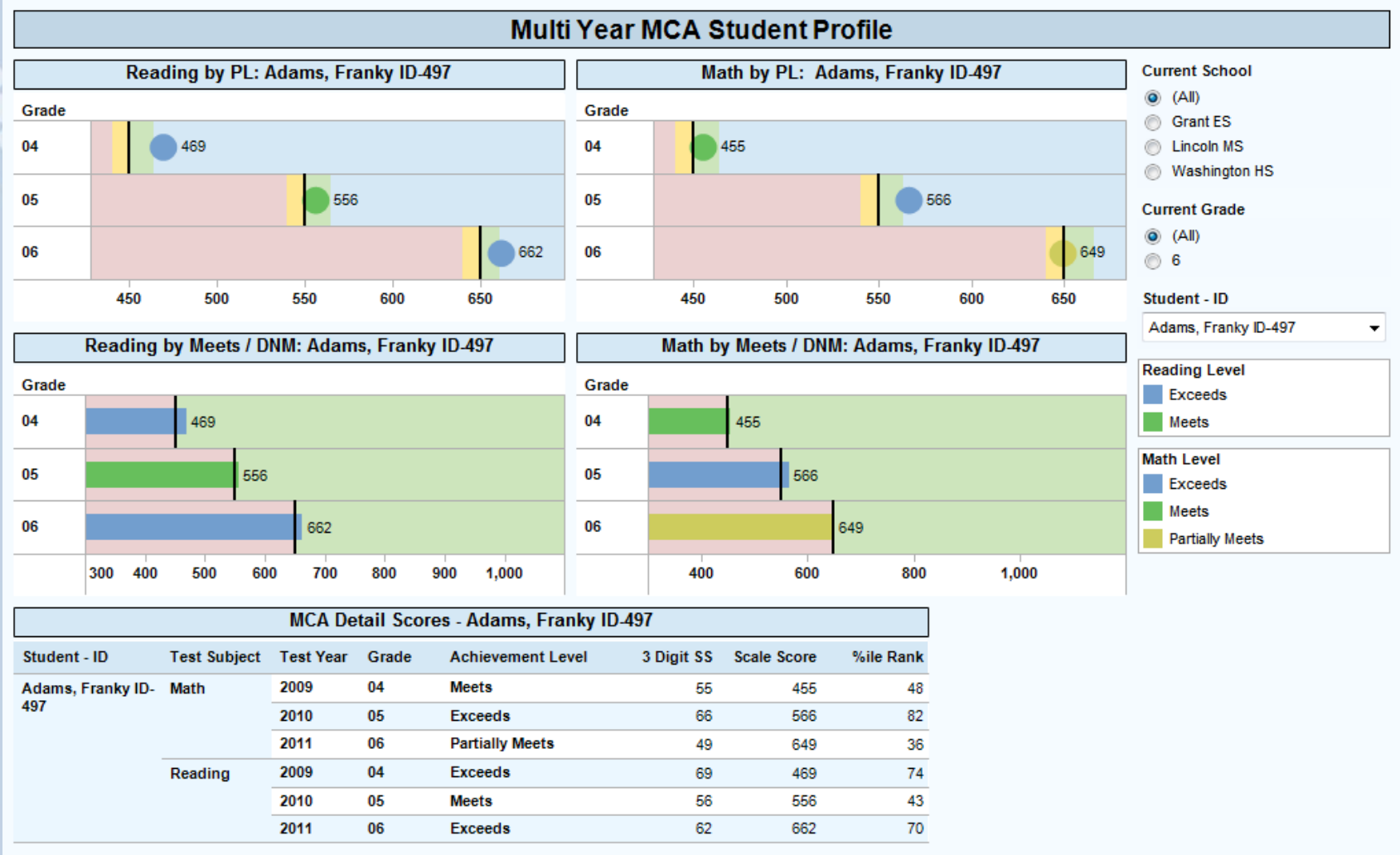


Reading Index

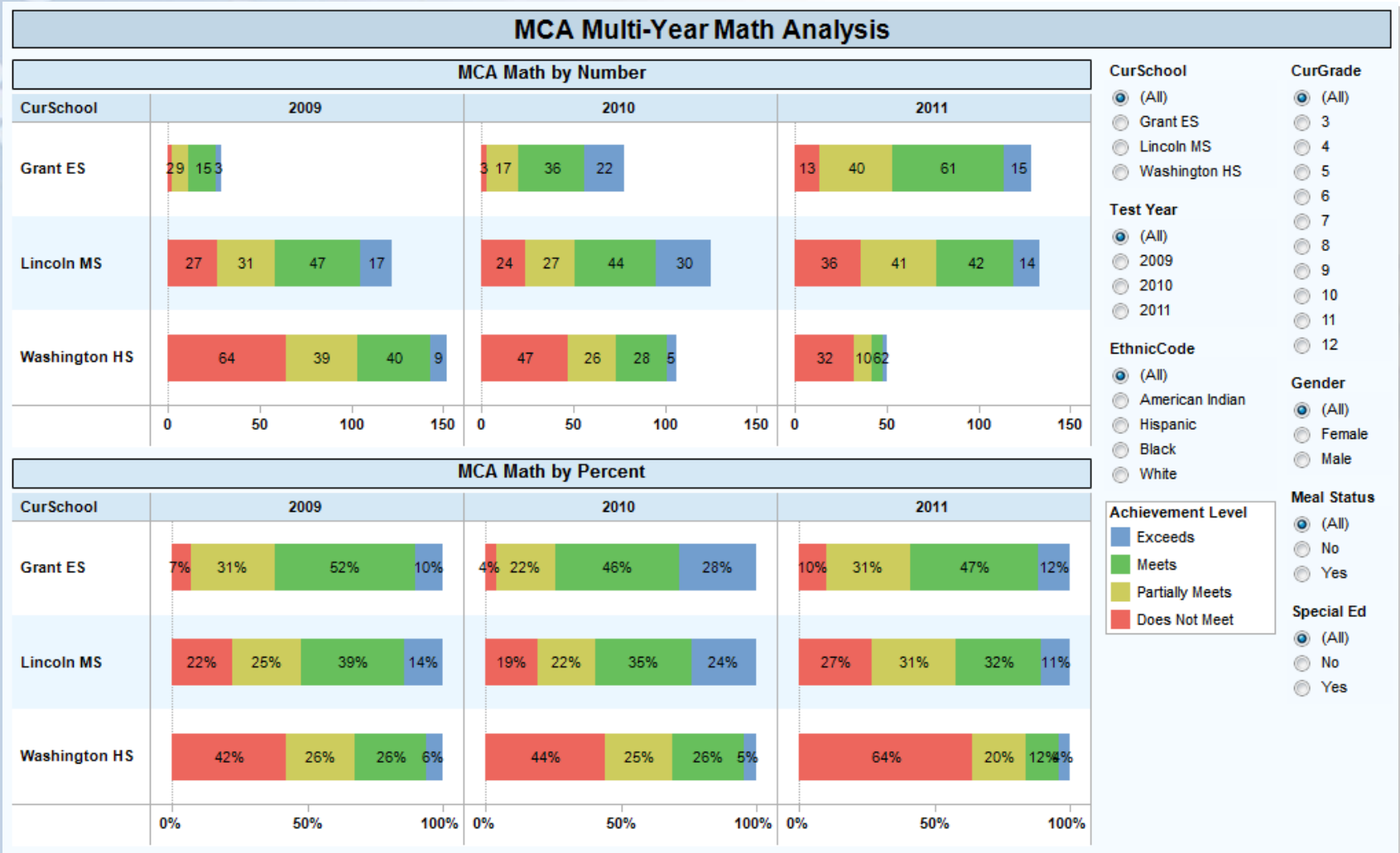




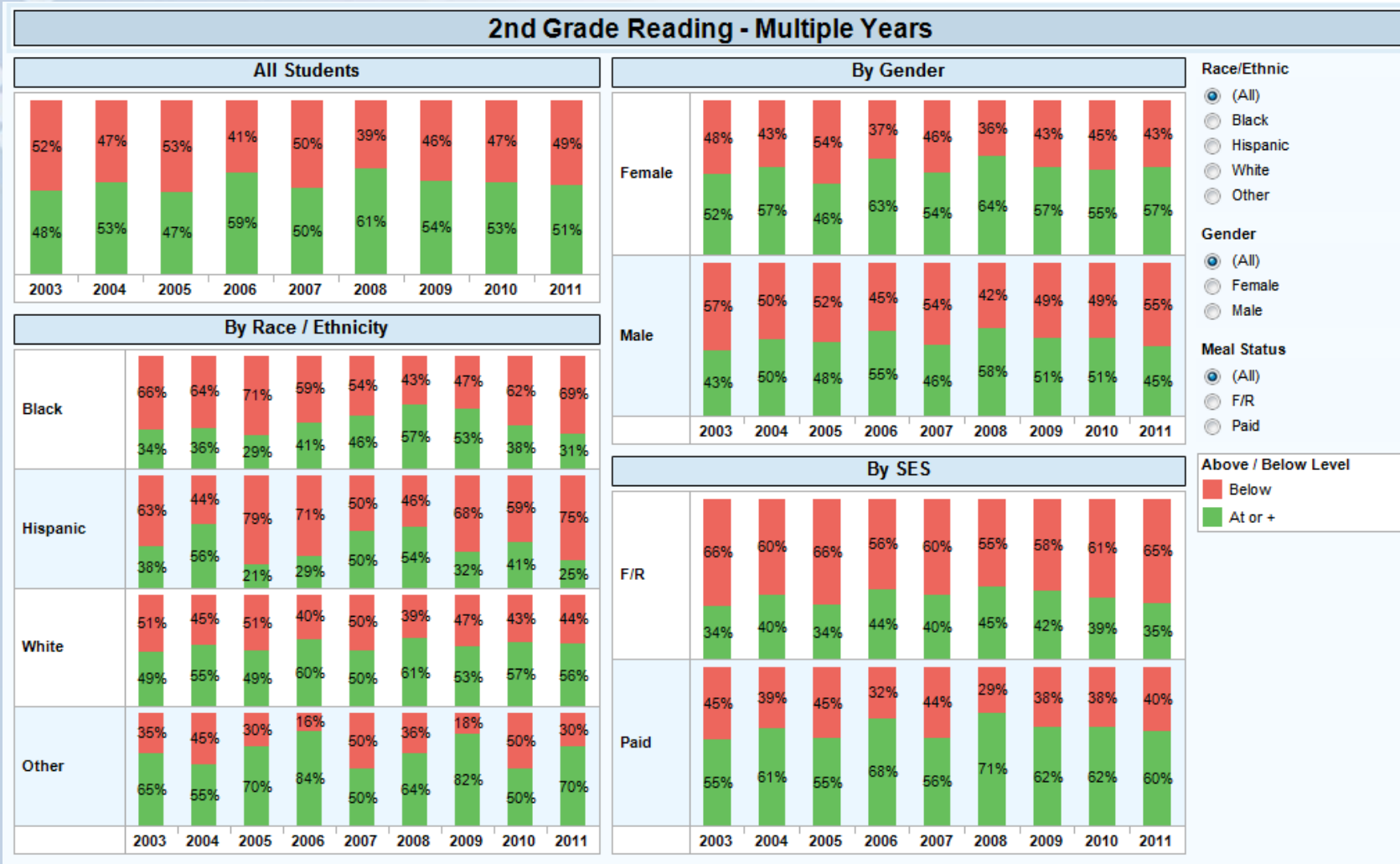
# MCA Multi-Year Student Profile



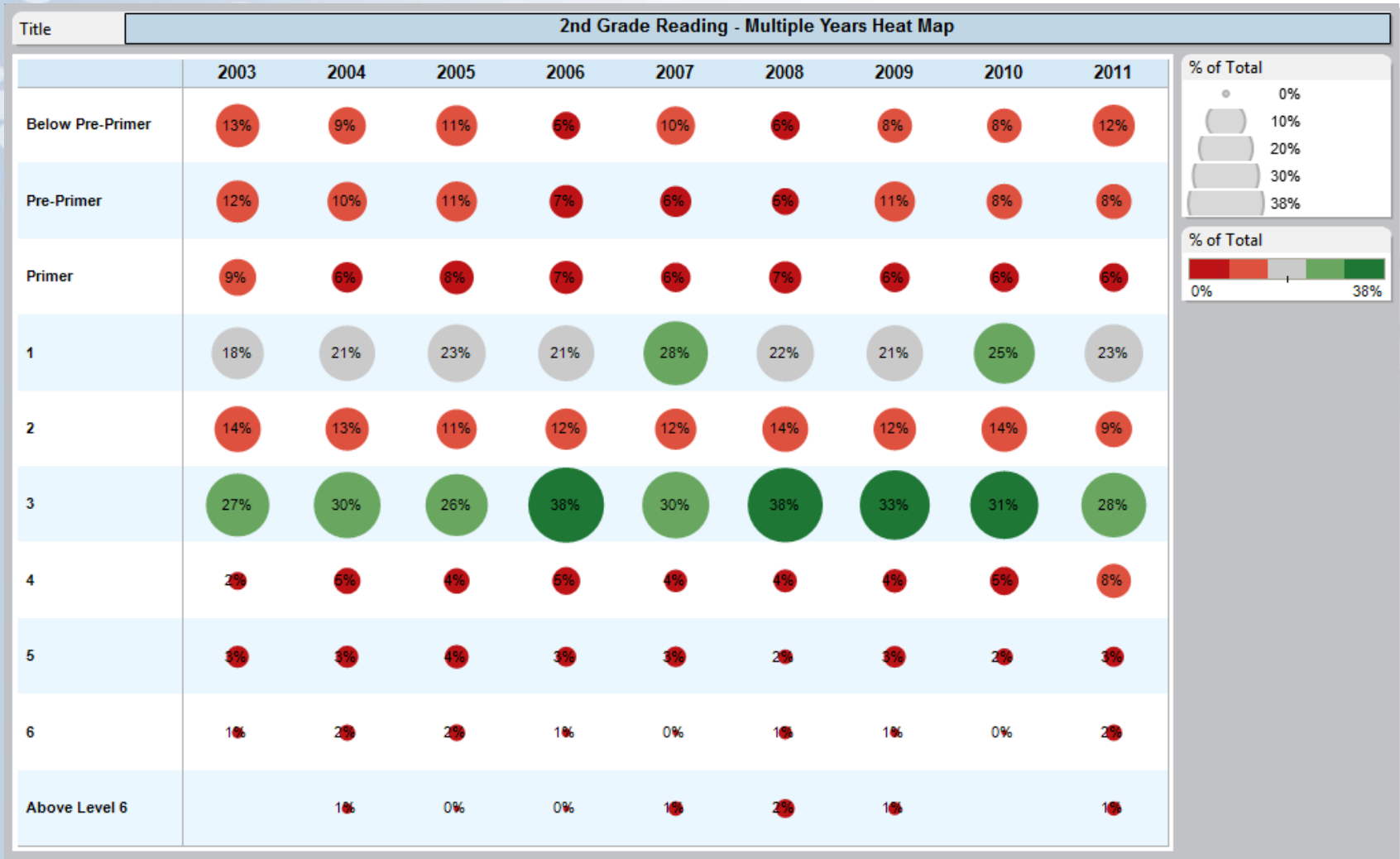
# MCA Multi-Year Math Analysis



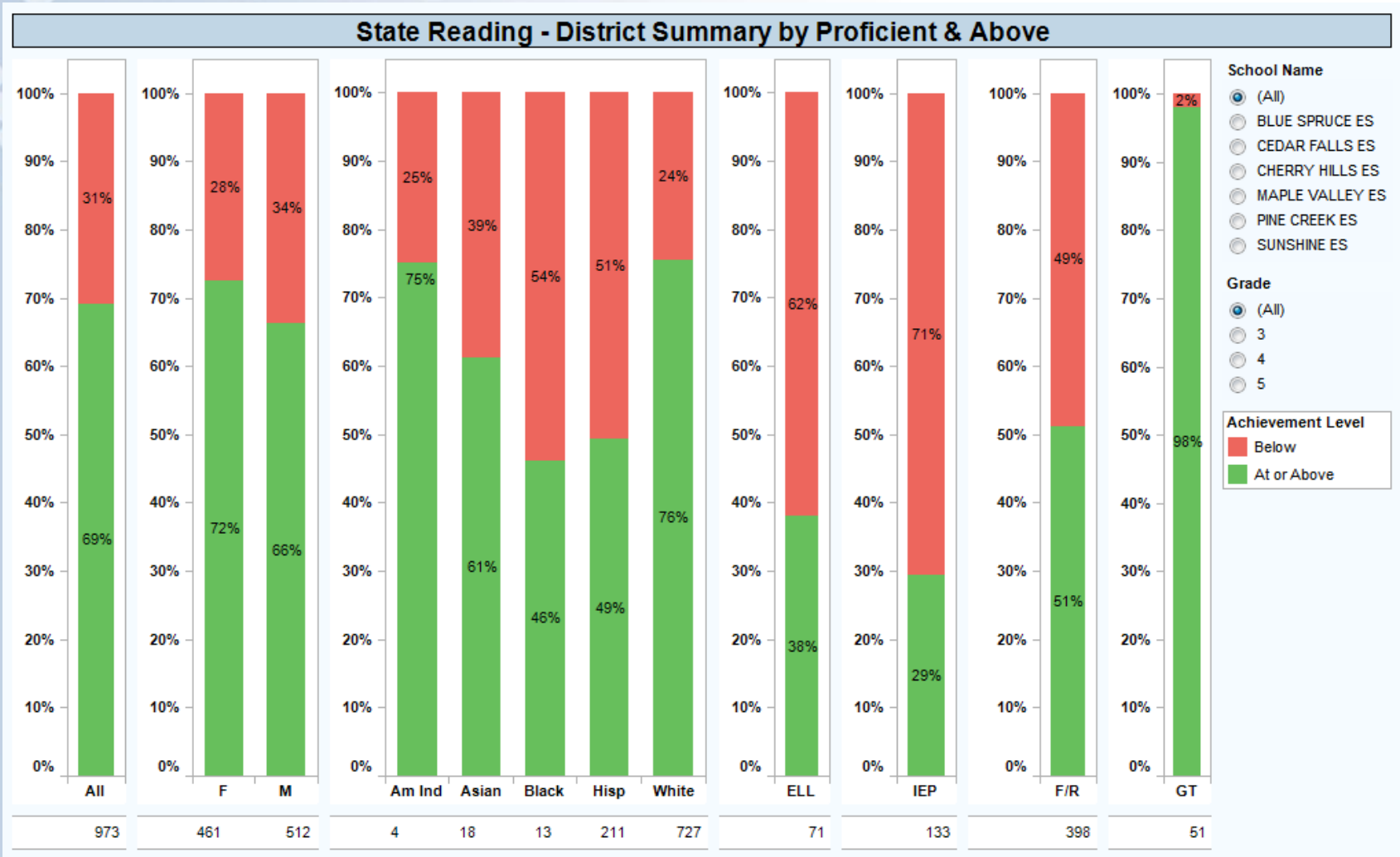
# Reading Multi-Year Analysis



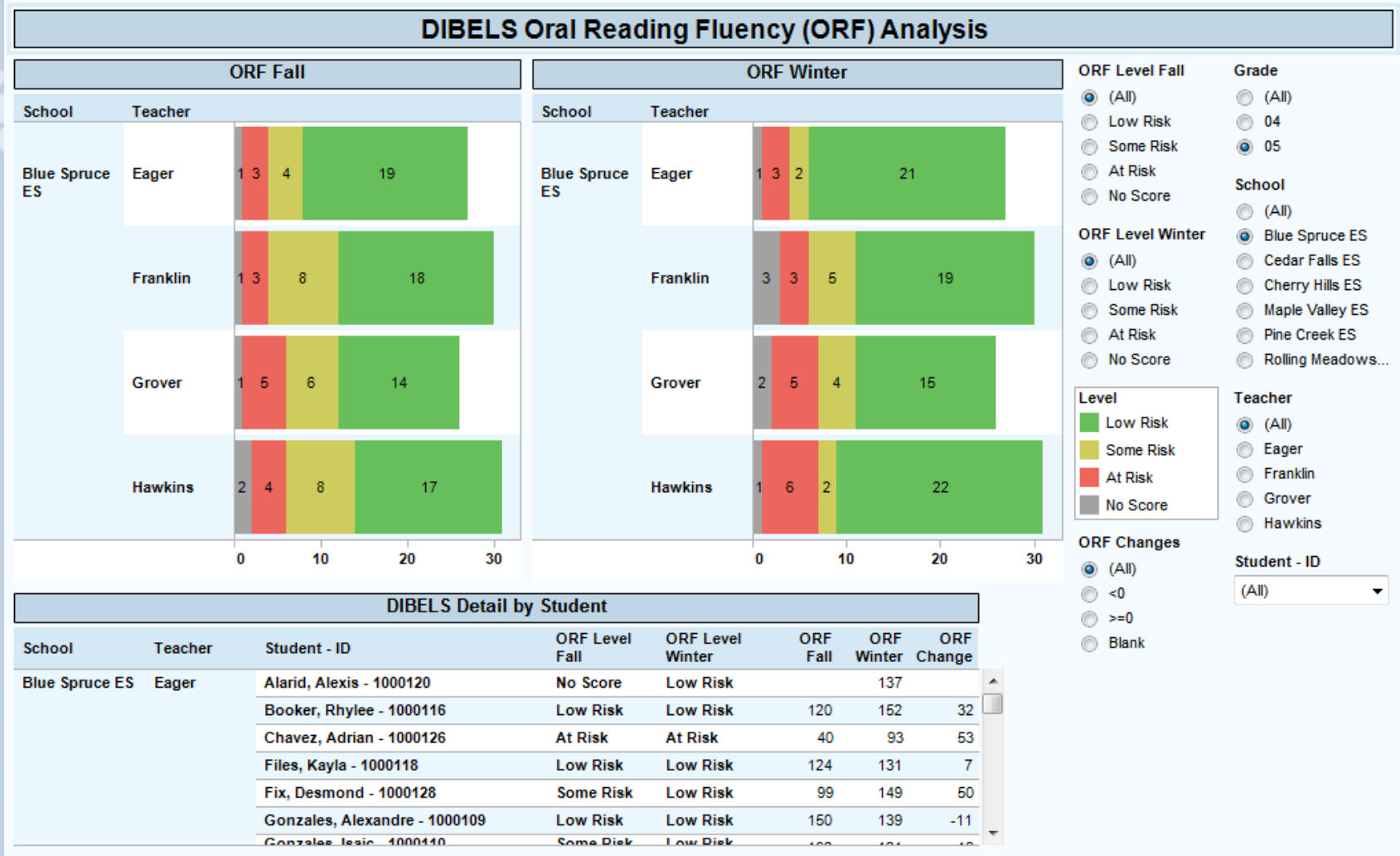
# Reading by Year & Level Heat Map



# Reading Scores – District Summary



# DIBELS Analysis

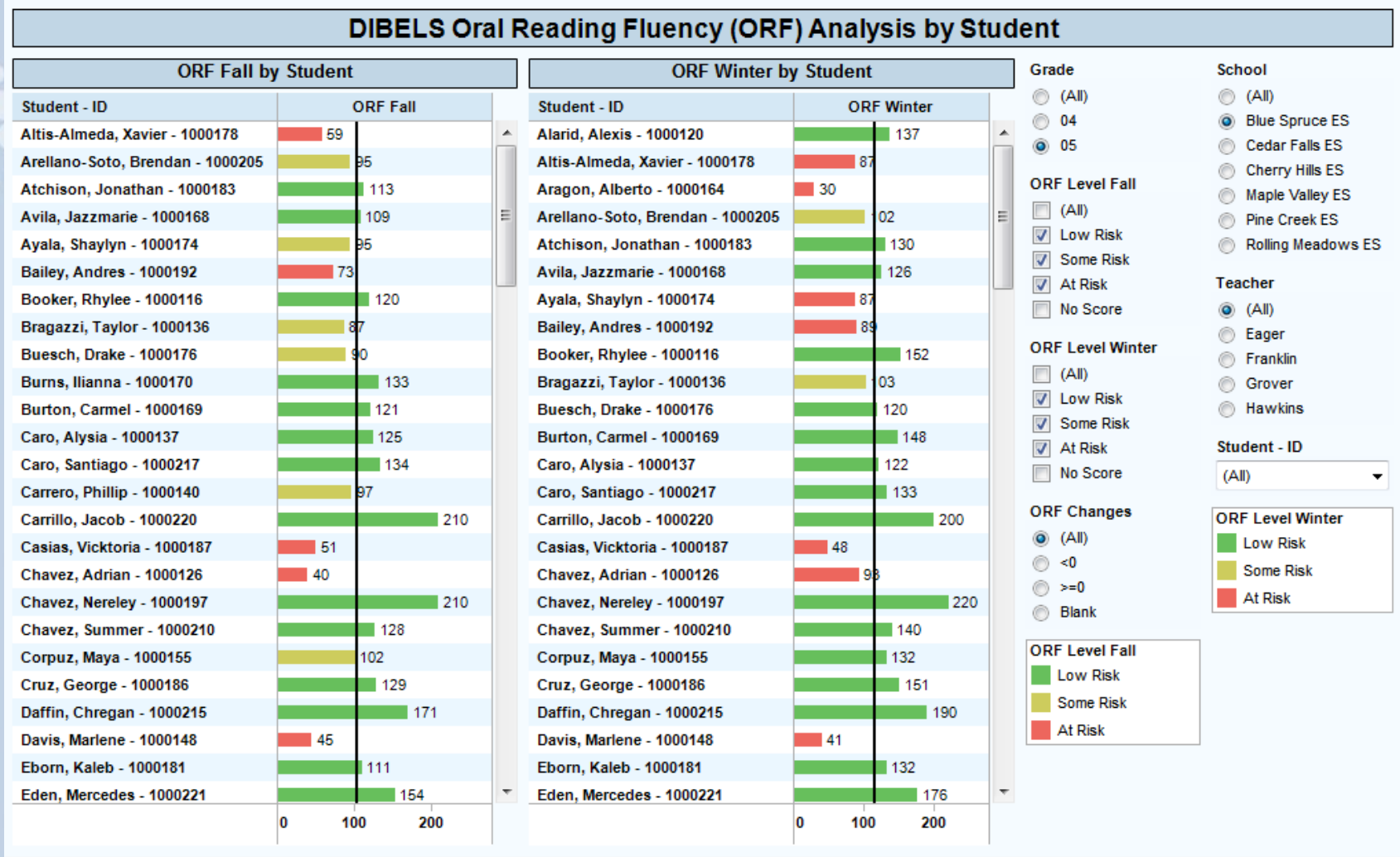


#### DIBELS Detail by Student

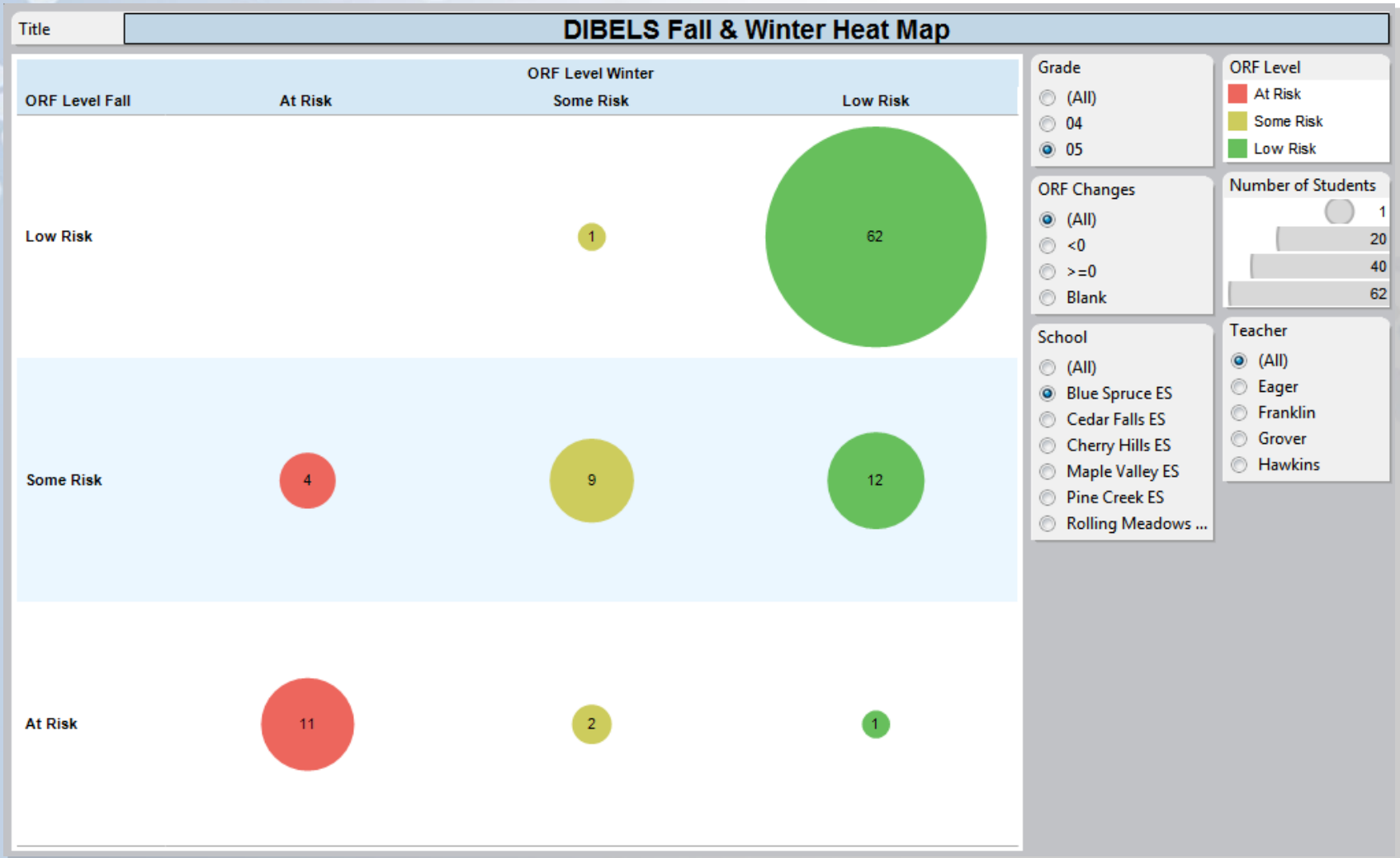
School	Teacher	Student - ID	ORF Level Fall	ORF Level Winter	ORF Fall	ORF Winter	ORF Change
Blue Spruce ES	Eager	Alarid, Alexis - 1000120	No Score	Low Risk		137	
		Booker, Rhylee - 1000116	Low Risk	Low Risk	120	152	32
		Chavez, Adrian - 1000126	At Risk	At Risk	40	93	53
		Files, Kayla - 1000118	Low Risk	Low Risk	124	131	7
		Fix, Desmond - 1000128	Some Risk	Low Risk	99	149	50
		Gonzales, Alexandre - 1000109	Low Risk	Low Risk	150	139	-11
		Gonzalez, Jesic - 1000110	Some Risk	Low Risk	100	101	1



# DIBELS by Student

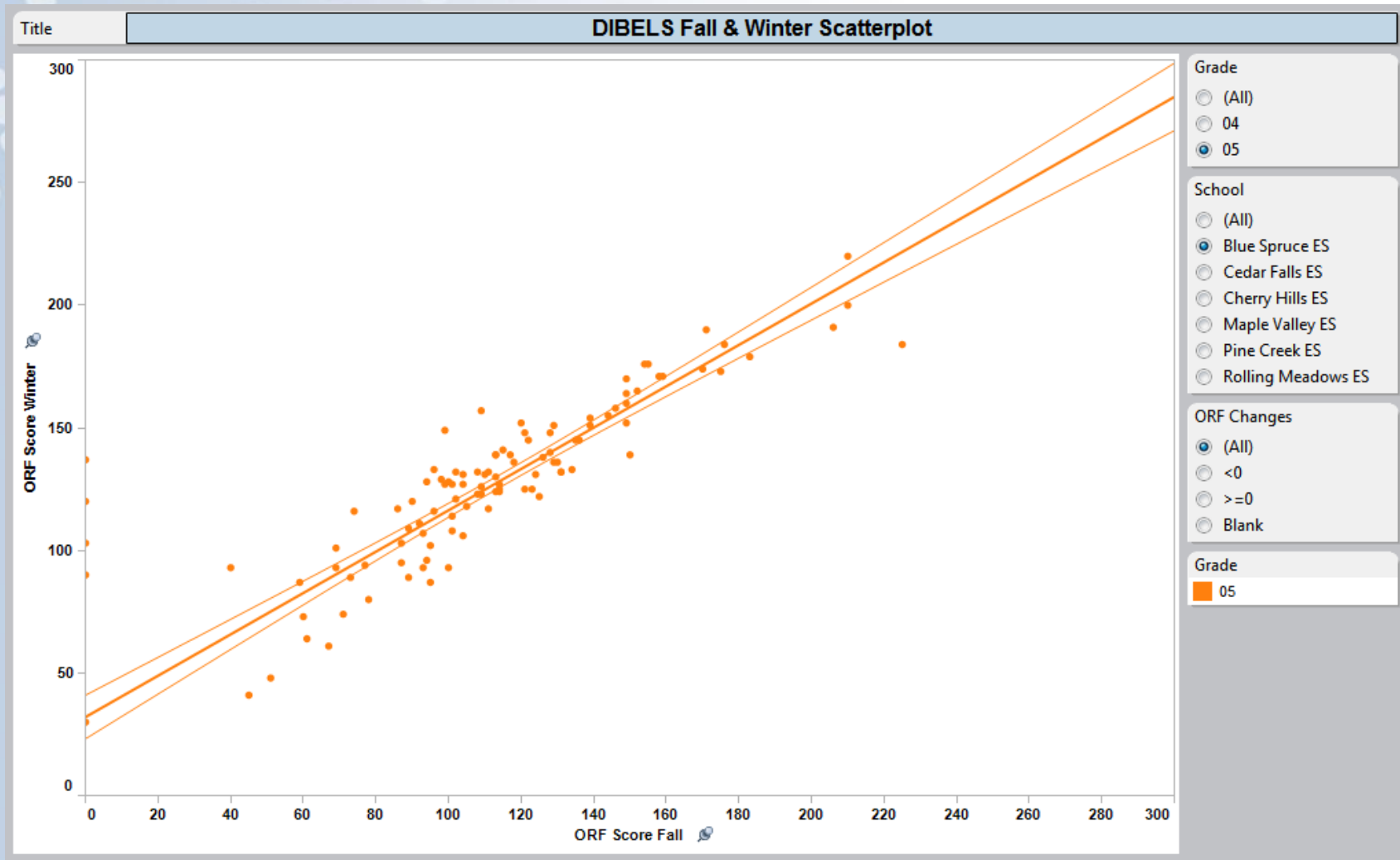


# DIBELS Heat Map





# DIBELS Scatterplot



# **CIC Analysis Portal**

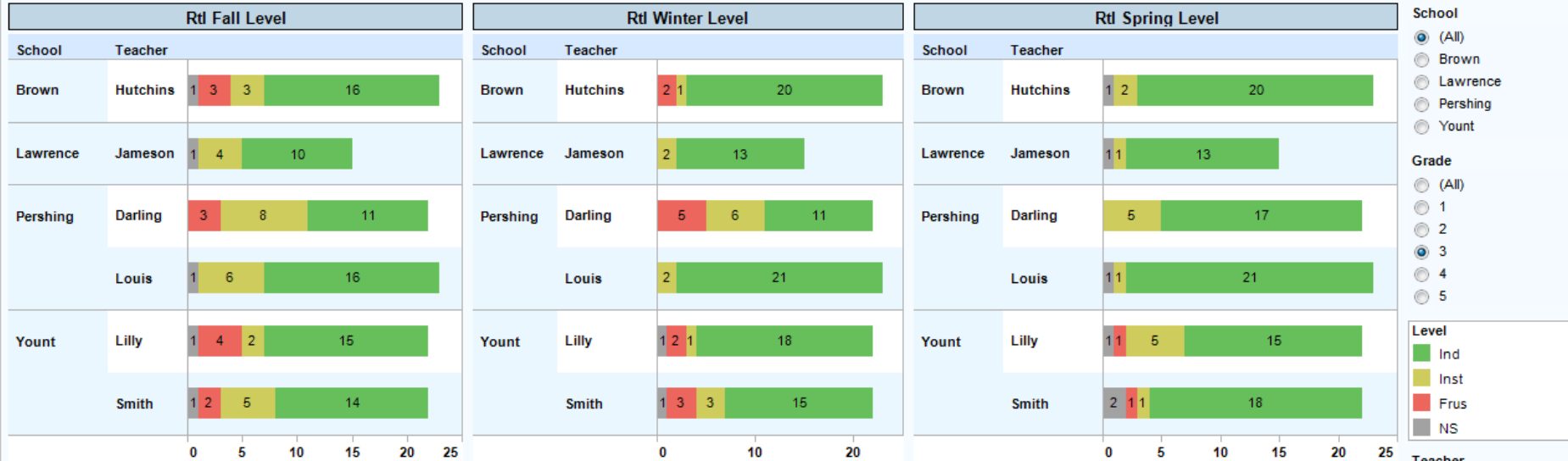
## **Response to Intervention (RtI) Examples**



# Strategic Rtl by School and Teacher



## Rtl - Word Accuracy



- School**
- (All)
  - Brown
  - Lawrence
  - Pershing
  - Yount
- Grade**
- (All)
  - 1
  - 2
  - 3
  - 4
  - 5
- Level**
- Ind
  - Inst
  - Frus
  - NS

## Rtl Detail by Student

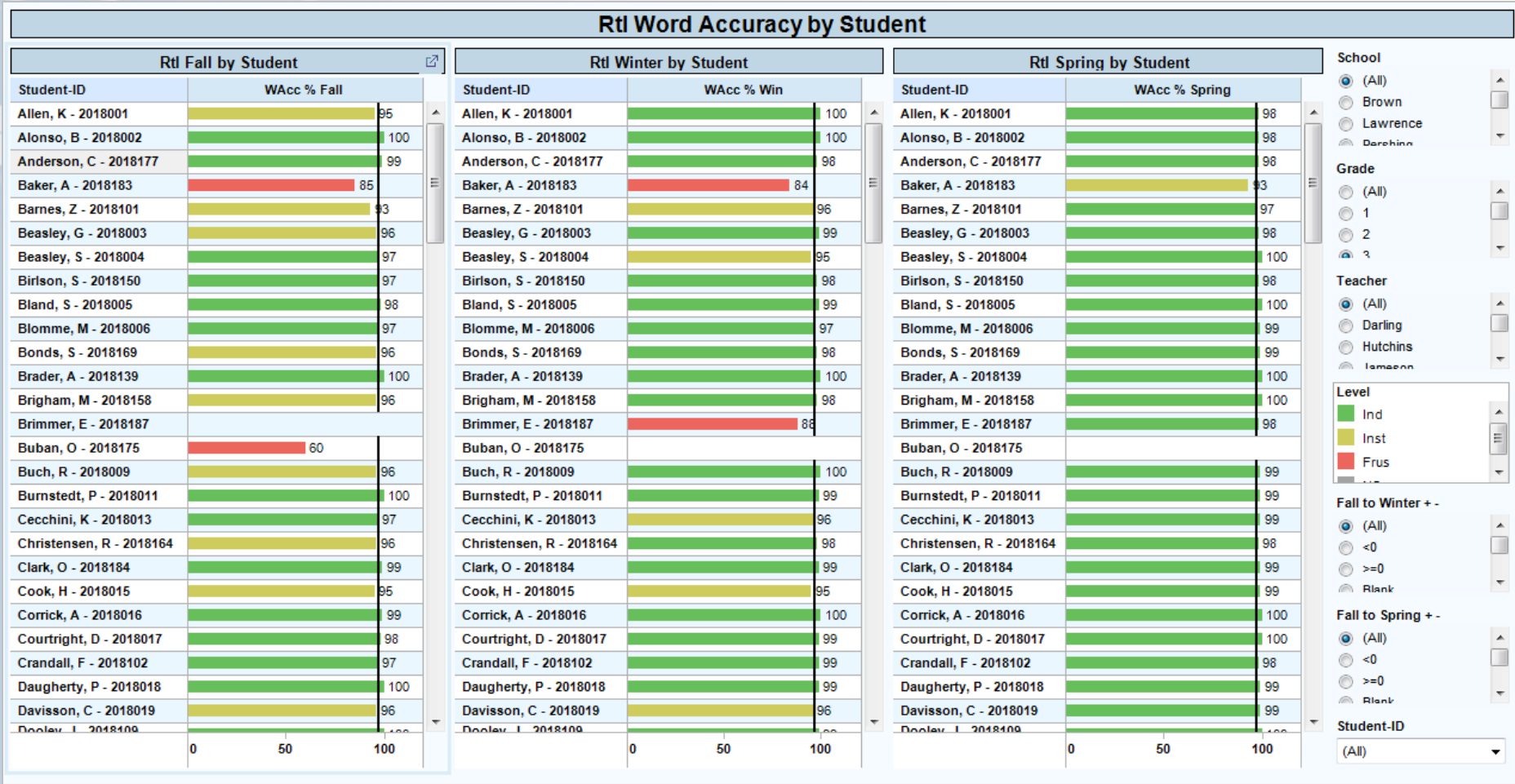
School	Teacher	Student-ID	Fall Level	Winter Level	Spring Level	WAcc % Fall	WAcc % Win	WAcc % Spr..	WAcc Fall M..	WAcc Win M..	WAcc Spr Mis
Brown	Hutchins	Bonds, S - 2018169	Inst	Ind	Ind	96	98	99	4	2	1
Brown	Hutchins	Brigham, M - 2018158	Inst	Ind	Ind	96	98	100	4	2	0
Brown	Hutchins	Fear, M - 2018023	Ind	Ind	Ind	99	100	100	1	0	0
Brown	Hutchins	Gridley, L - 2018032	Frus	Inst	Ind	90	93	98	10	7	2
Brown	Hutchins	Higdon, J - 2018036	Ind	Ind	Ind	99	100	100	1	0	0
Brown	Hutchins	Hill, J - 2018037	Inst	Ind	NS	93	98	98	7	2	0
Brown	Hutchins	Horton, T - 2018040	Ind	Ind	Ind	97	99	100	3	1	0
Brown	Hutchins	Lyman, D - 2018048	Ind	Ind	Ind	100	99	100	0	1	0

- Fall to Winter + -**
- (All)
  - <0
  - >=0
  - Blank
- Fall to Spring + -**
- (All)
  - <0
  - >=0
  - Blank

- Teacher**
- (All)
  - Darling
  - Hutchins
  - Jameson
  - Lilly
  - Louis
  - Smith
- Student-ID**
- (All) ▼



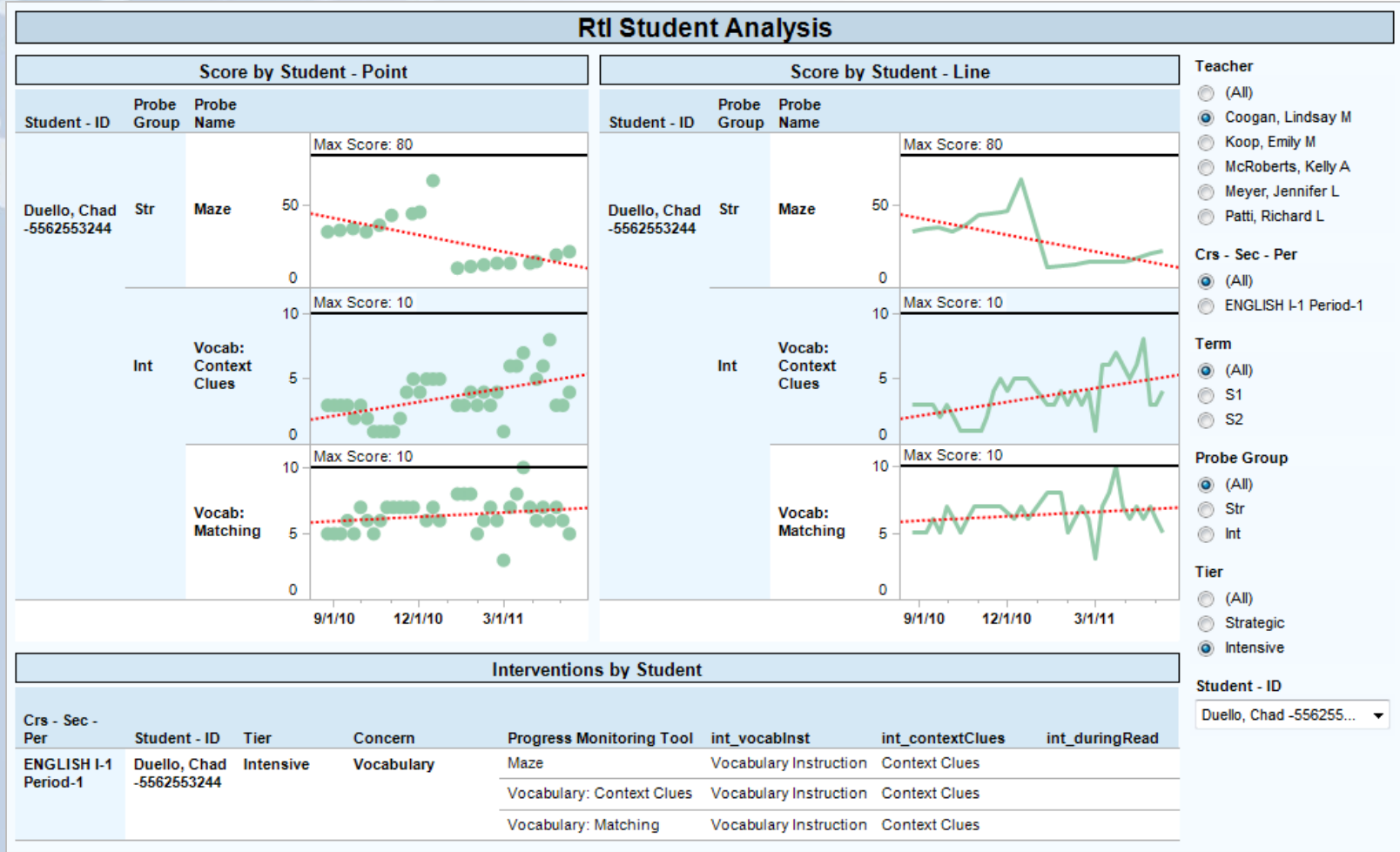
# Strategic RtI Analysis by Student



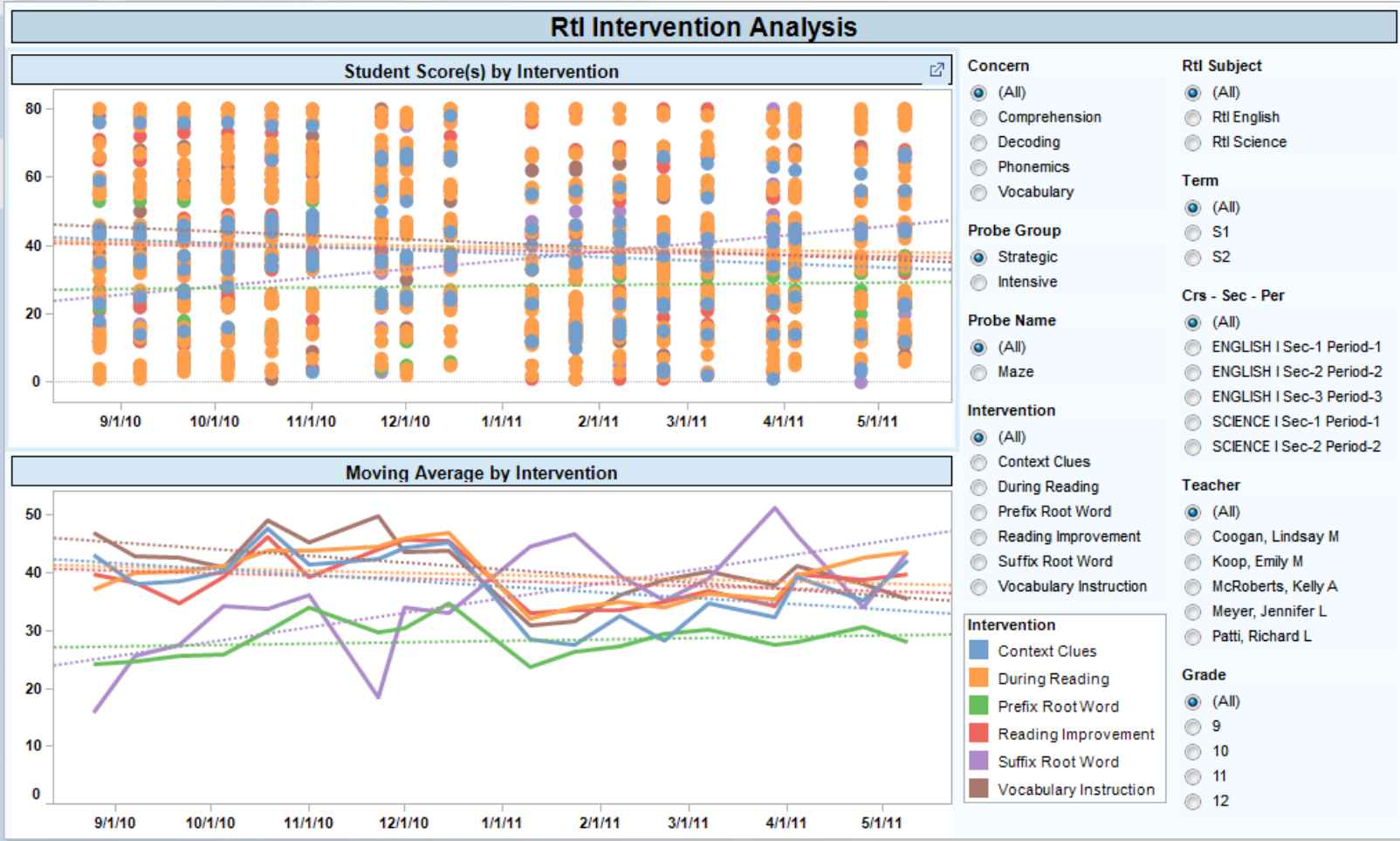
# Strategic Rtl – Movement over Time



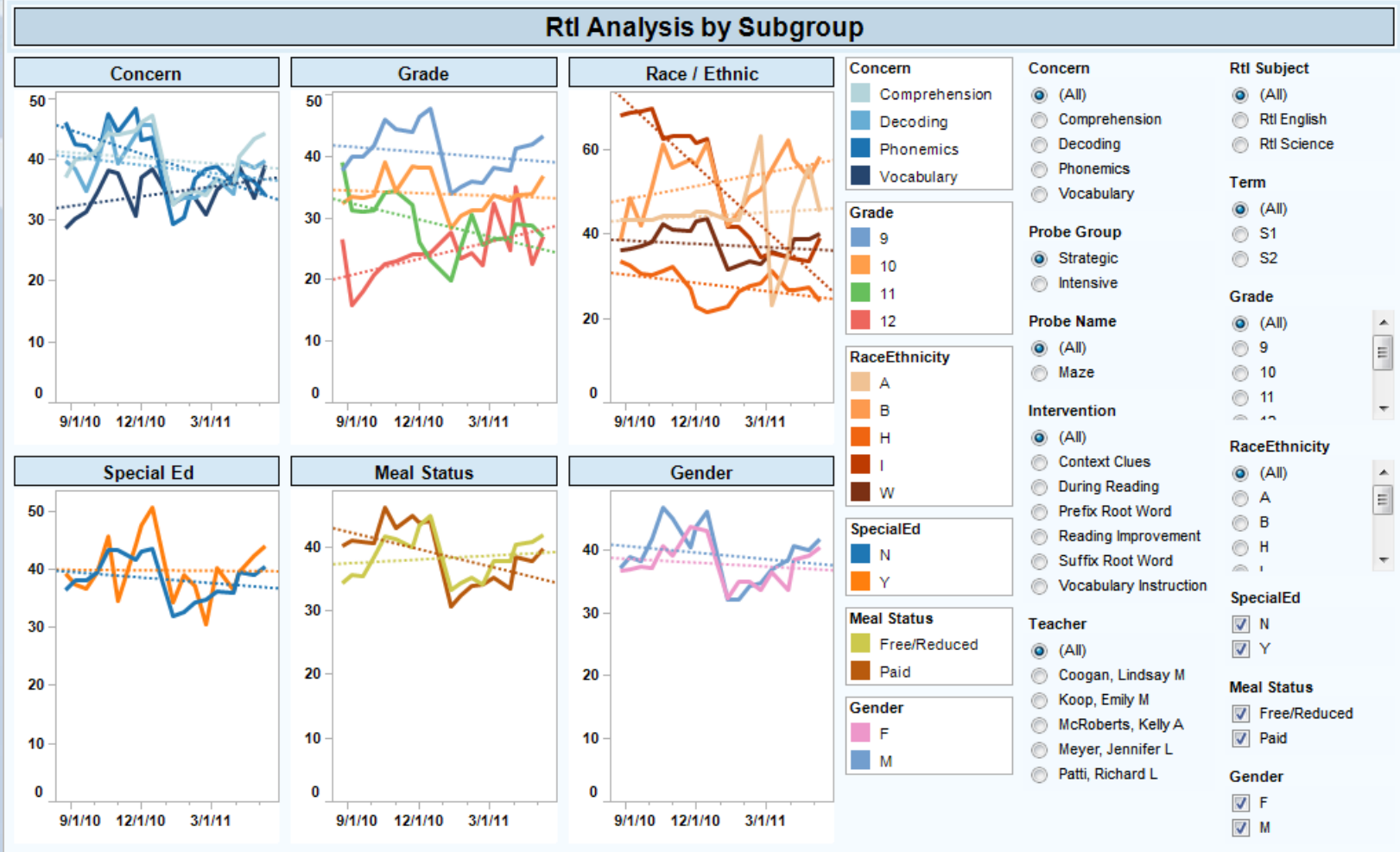
# RtI Intensive by Student



# Rtl Effectiveness - Interventions



# RtI Effectiveness - Subgroups





# CIC Analysis Portal

## At-Risk Examples



# At-Risk (Detail)

## At-Risk Detailed Analysis

### At Risk Students

Student Data	Attend	Behavior	Grades	Tests (U/PP)	Tests (U)	LEP	SES
Abel, Michelle E Gr: 10 ID# 2000783	-	-	-	-	-	-	Yes
Abeyta, Samantha C Gr: 11 ID# 2002251	-	-	-	Yes	-	-	Yes
Adams, Blake R Gr: 09 ID# 2000875	-	-	-	-	-	-	Yes
Adams, Hannah R Gr: 09 ID# 2001016	-	-	-	Yes	-	-	Yes
Adams, Jameson A Gr: 09 ID# 2004528	-	-	-	-	-	-	Yes
Adams, Mya L Gr: 11 ID# 2000779	-	-	-	Yes	-	-	Yes
Adamson, Jeremiah J Gr: 09 ID# 2000106	-	-	Yes	Yes	-	-	Yes
Adamson, Rita M Gr: 12 ID# 2000071	Yes	-	Yes	-	-	-	Yes
Adcock, Hailee L Gr: 10 ID# 2004727	-	-	Yes	-	-	-	Yes
Aguilar, Zachary B Gr: 09 ID# 2000057	Yes	-	Yes	Yes	Yes	Yes	Yes

### School Level

- (All)
- Elem
- Middle
- High

### School Name

- (All)
- Westside HS

### Grade

- (All)
- 09
- 10
- 11

### Attendance

- (All)
- 
- Yes

### Tests (U/PP)

- (All)
- 
- Yes

### Behavior

- (All)
- 
- Yes

### Tests (U)

- (All)
- 
- Yes

### Grades

- (All)
- 
- Yes

### LEP

- (All)
- 
- Yes

### SES

- (All)
- 
- Yes

### Special Ed

- (All)
- No
- Yes

### Attendance

Student Data	Term	Unex Abs	Tardies
Adamson, Rita M Gr: 12 ID# 2000071	Q1 S1	9	4
	Q2 S1	30	6
	Q3 S2	14	0

### Grades

Student Data	Term	Course / Section	Mark
Adamson, Rita M Gr: 12 ID# 2000071	Q2 S1	001725-1 Pottery II - Sabatke, M.	F

### Test Scores

Student Data	Test Name	Year	PL	SS
Adamson, Rita M Gr: 12 ID# 2000071	2005 CSAP Math	2005	PP	553
	2006 CSAP Math	2006	PP	555
	2006 CSAP Science	2006	PP	500
	2007 CSAP Math	2007	PP	580
	2008 CSAP Math	2008	PP	589
	2008 CSAP Writing	2008	PP	566

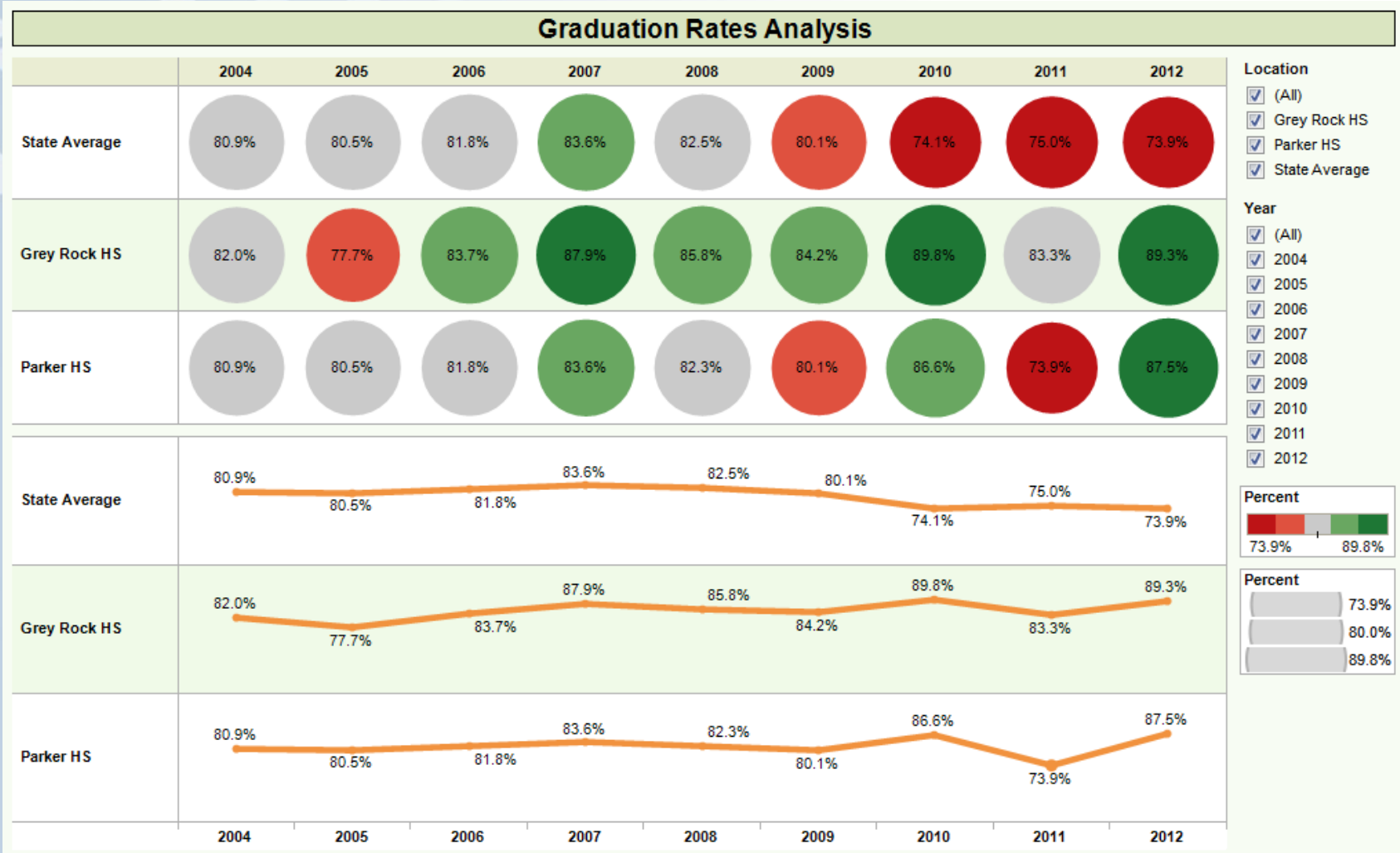
### Behavior

Student Data	Term	Event Name	Ev
Adamson, Rita M Gr: 12 ID# 2000071	Q2 S1	Forged Note/Phone Call	11

### Health

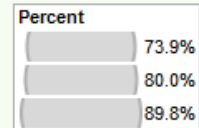
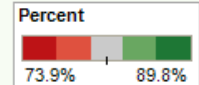


# Graduation Rates Analysis



- Location
- (All)
  - Grey Rock HS
  - Parker HS
  - State Average

- Year
- (All)
  - 2004
  - 2005
  - 2006
  - 2007
  - 2008
  - 2009
  - 2010
  - 2011
  - 2012

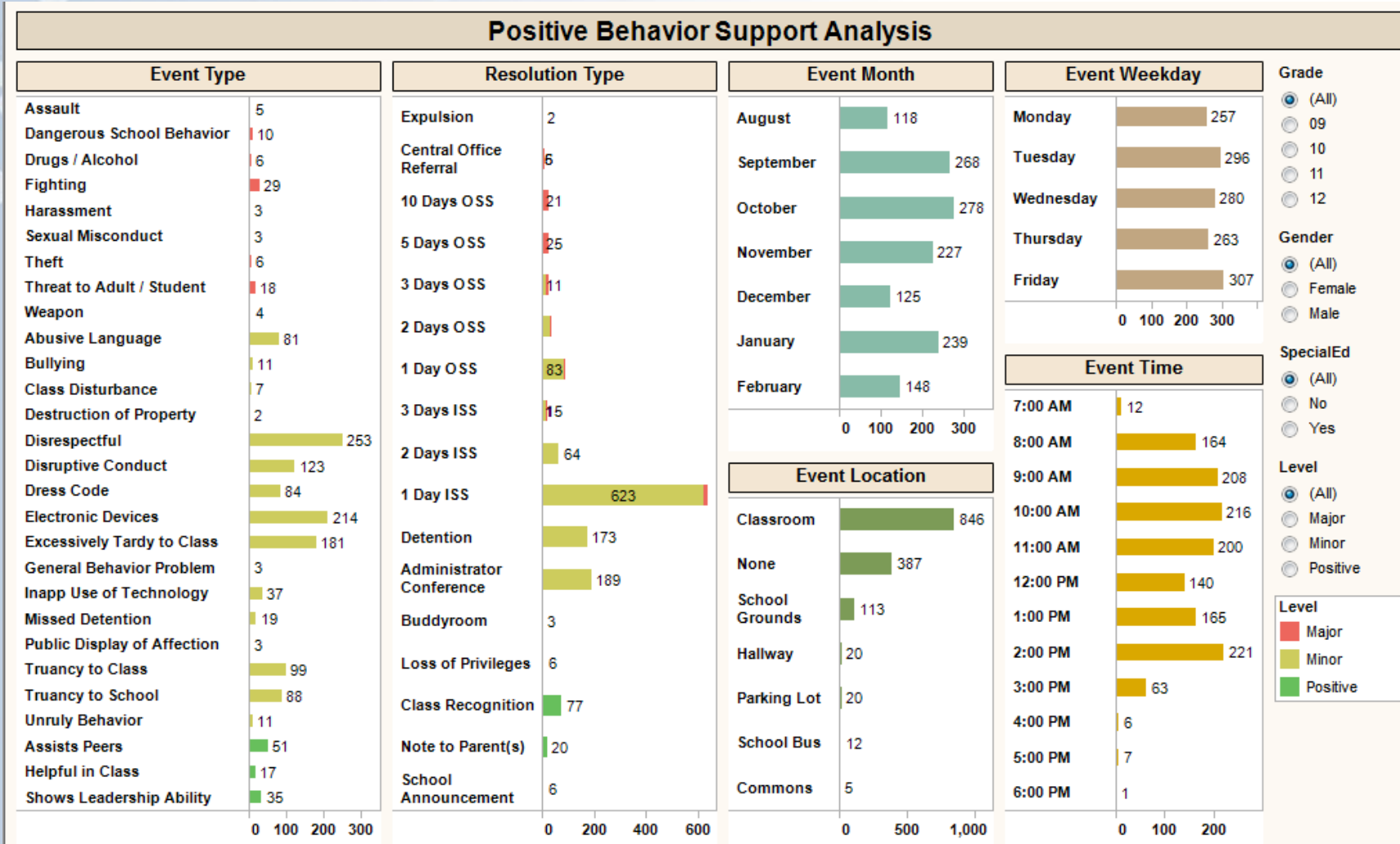


# CIC Analysis Portal

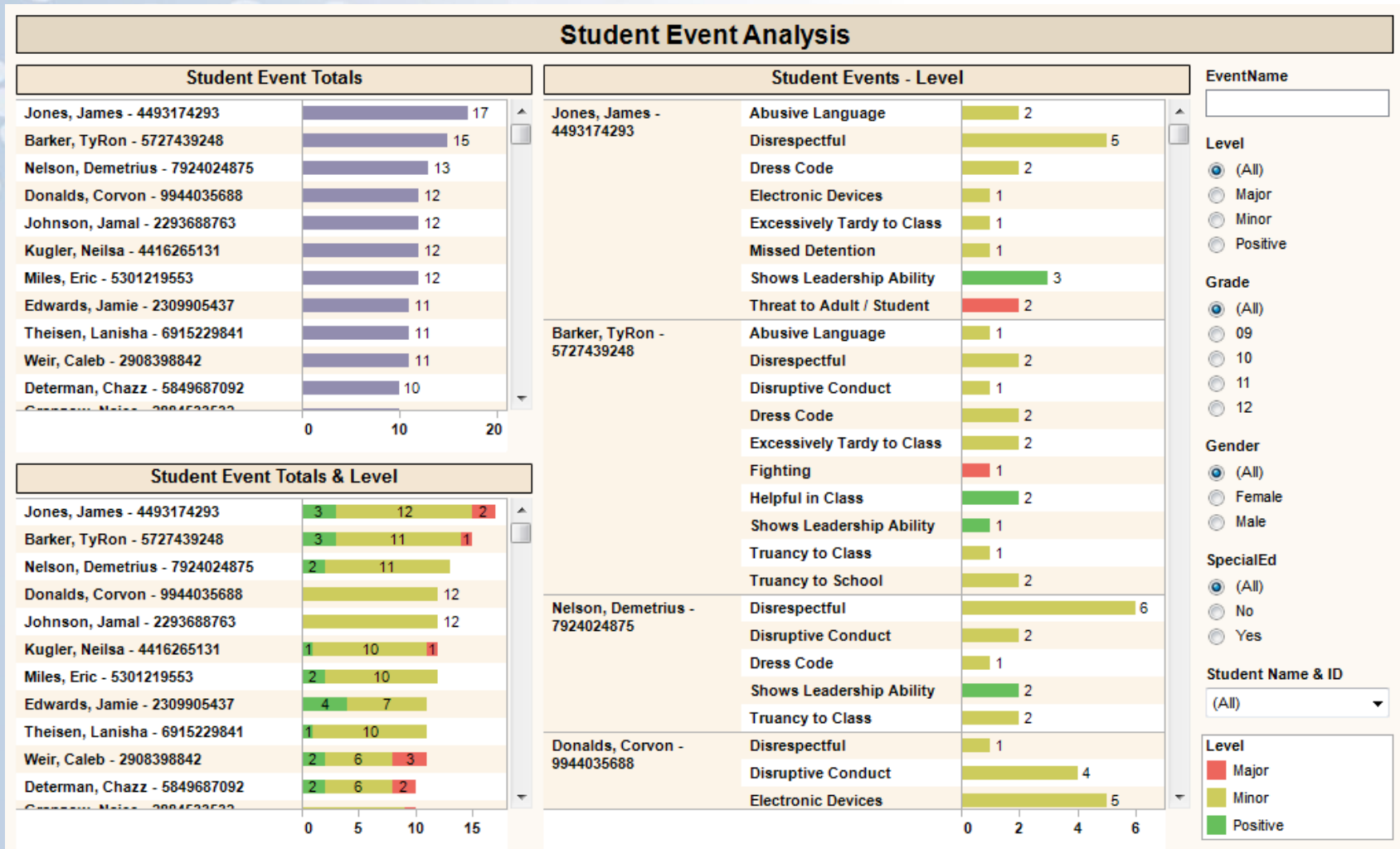
## Student Information Examples



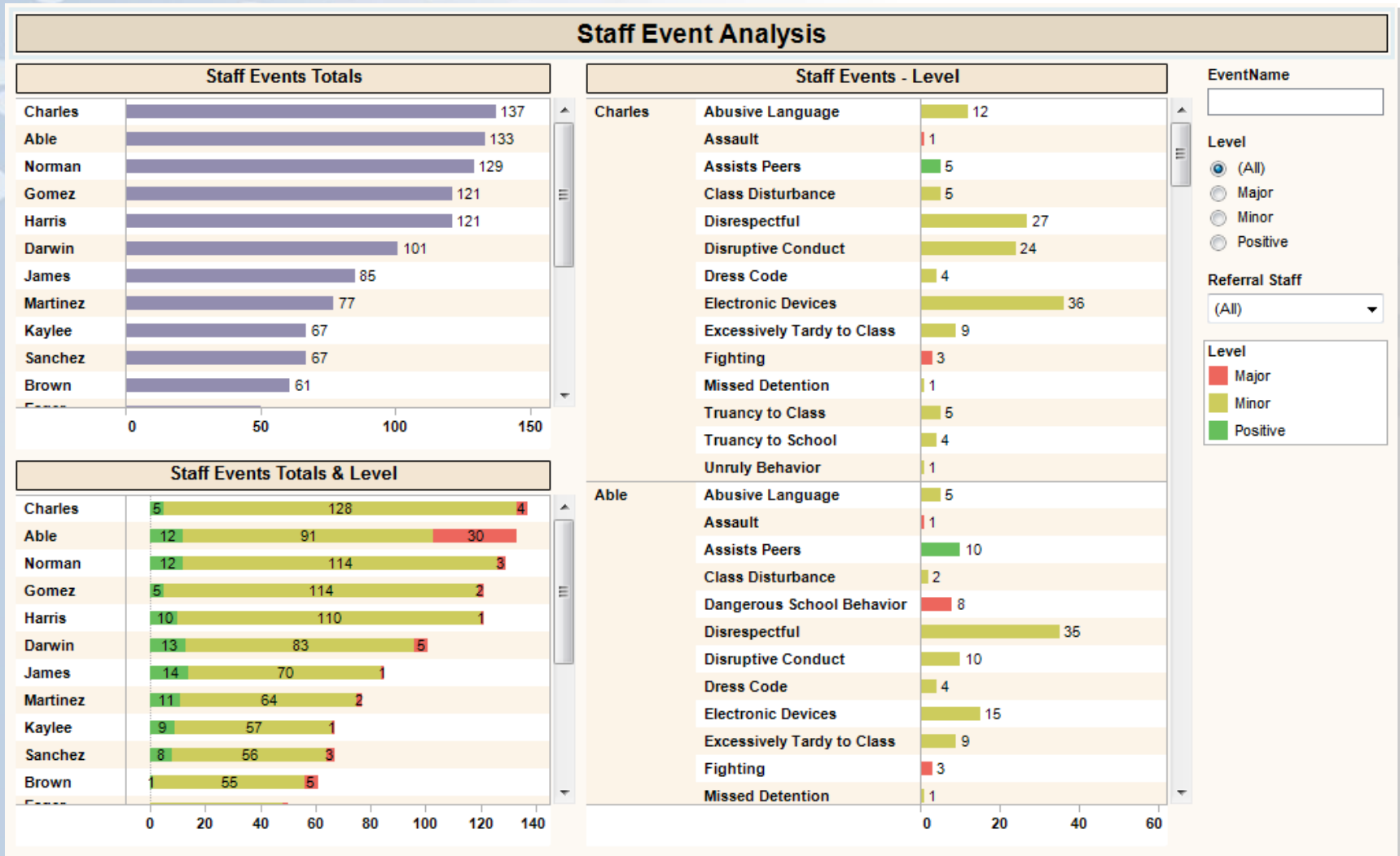
# Positive Behavior Support - Summary



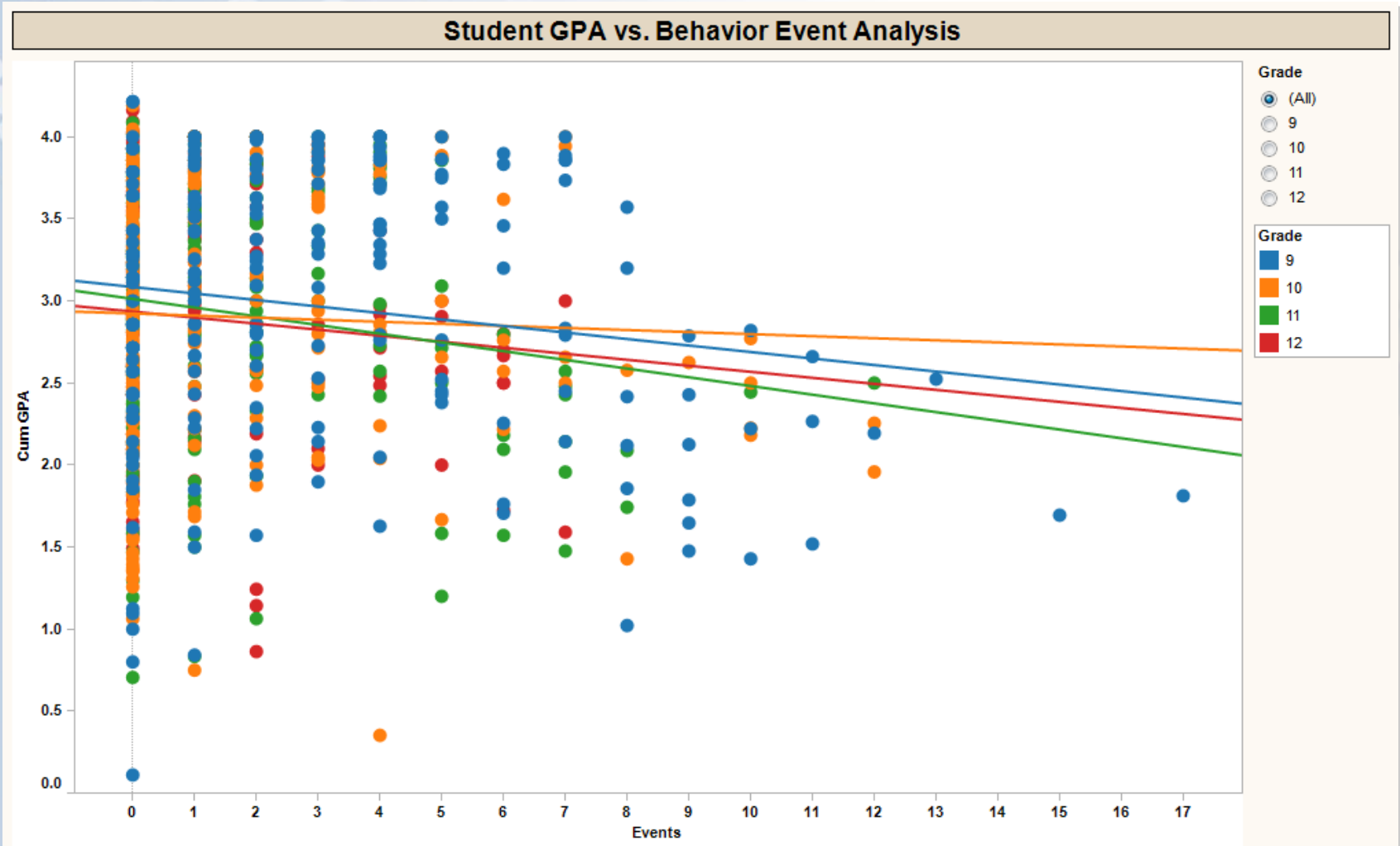
# Positive Behavior Support – by Student



# Positive Behavior Support – by Staff

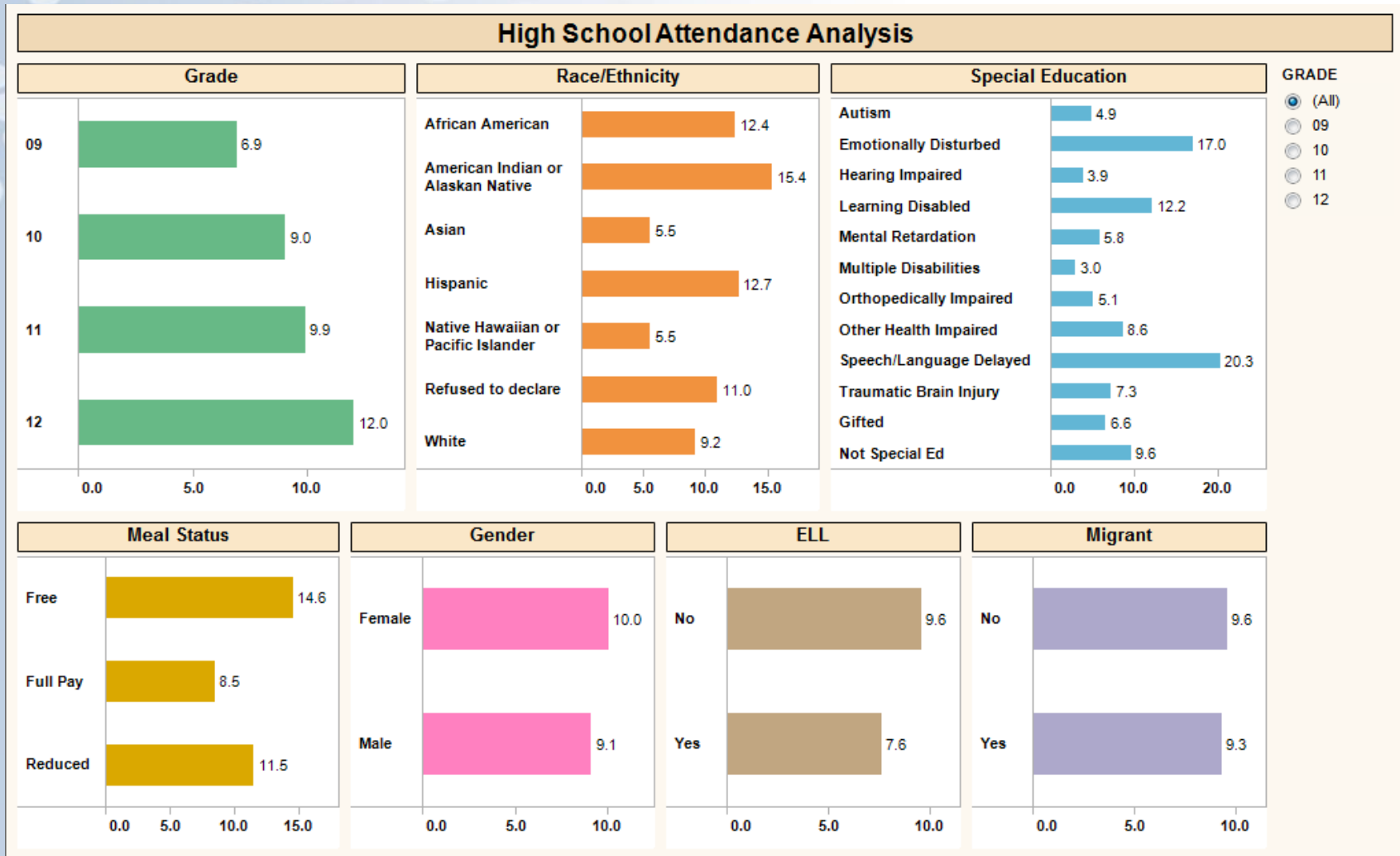


# GPA vs. Behavior Analysis

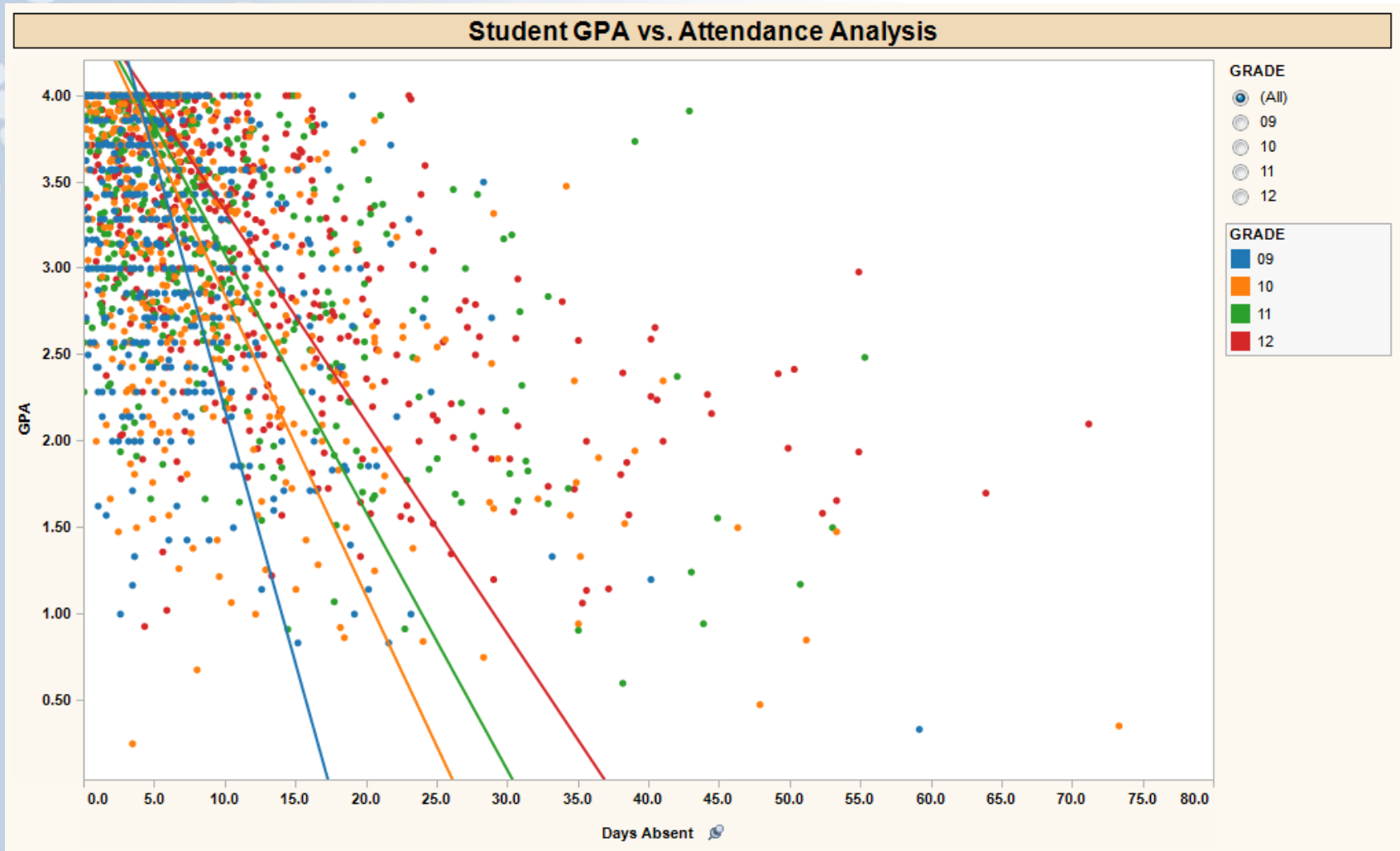




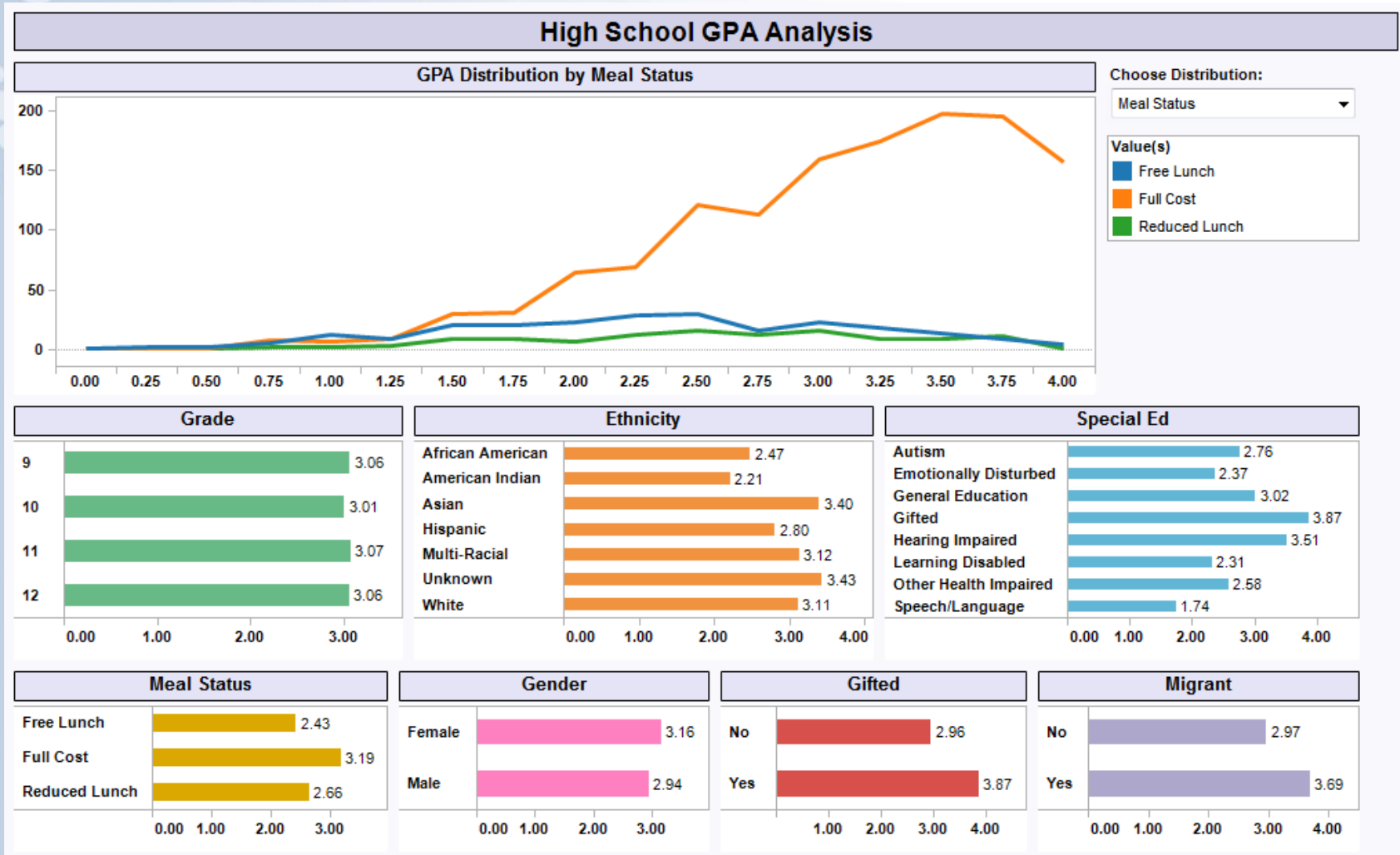
# High School Attendance Analysis



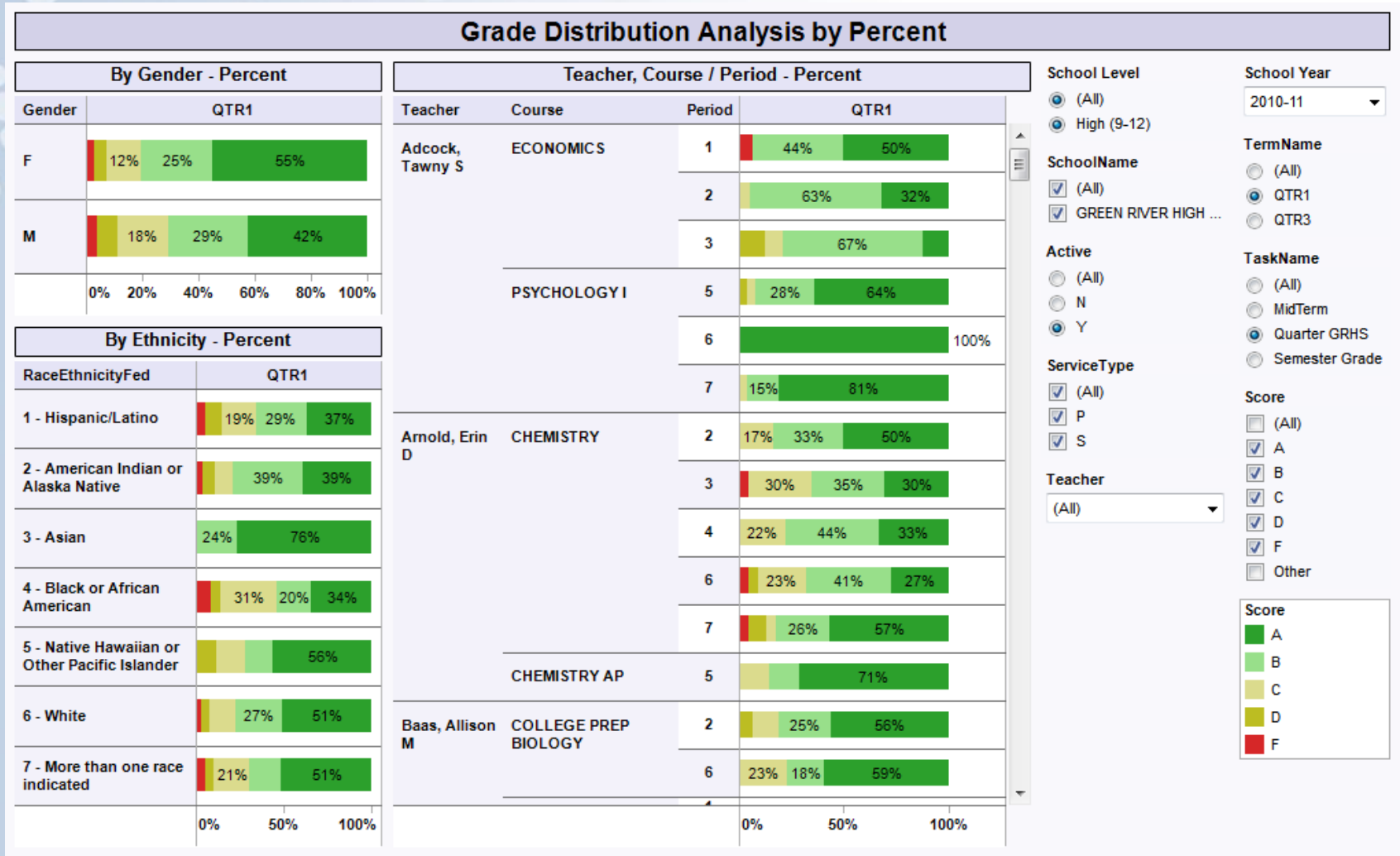
# Attendance vs. GPA Analysis



# High School GPA Analysis



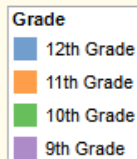
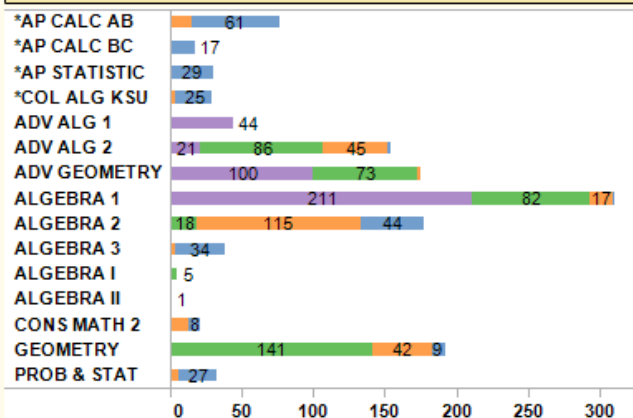
# Grade Distribution Analysis



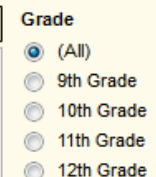
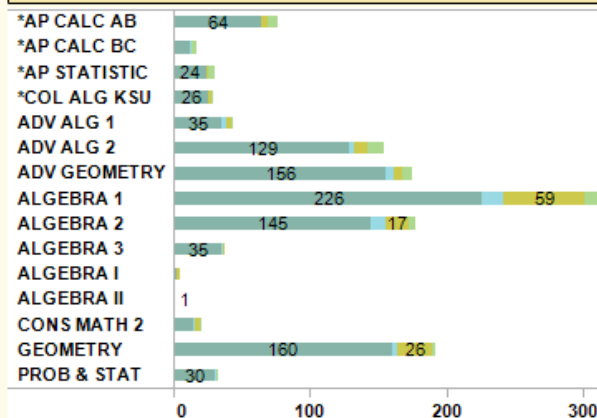
# Math Enrollment Analysis

## Math Enrollment Analysis

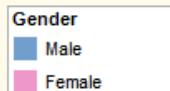
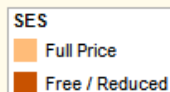
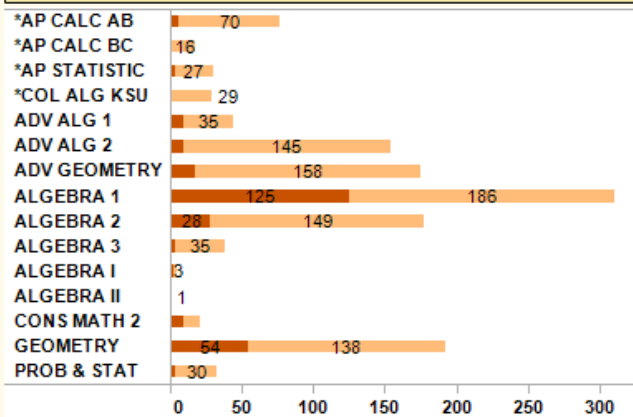
### Math by Grade



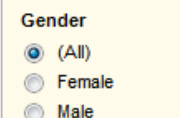
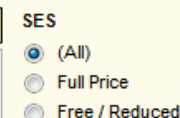
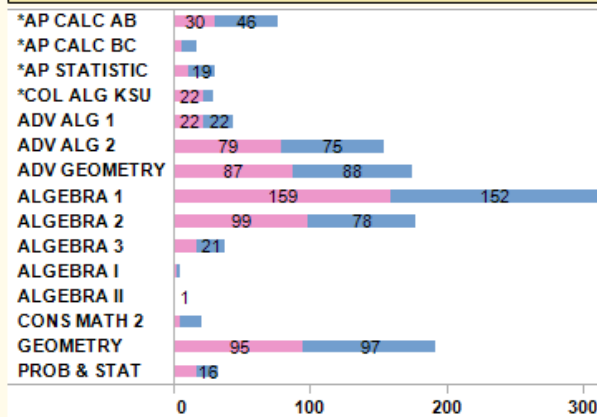
### Math by Race/Ethnicity



### Math by SES



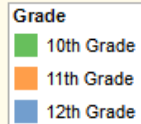
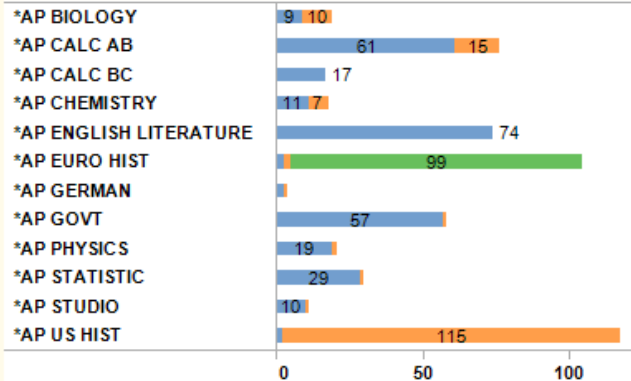
### Math by Gender



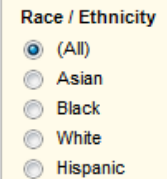
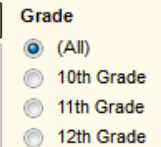
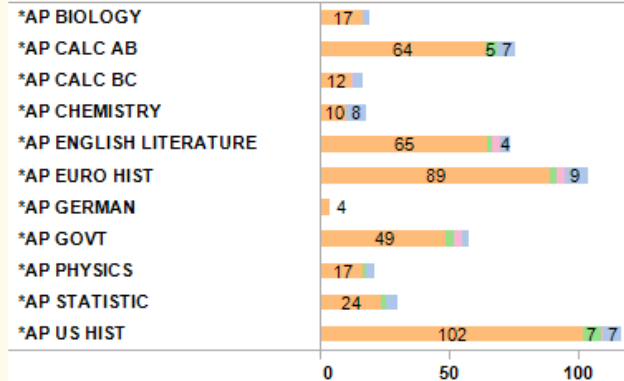
# AP Enrollment Analysis

## Advanced Placement (AP) Enrollment Analysis

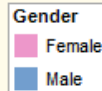
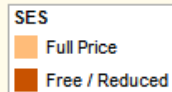
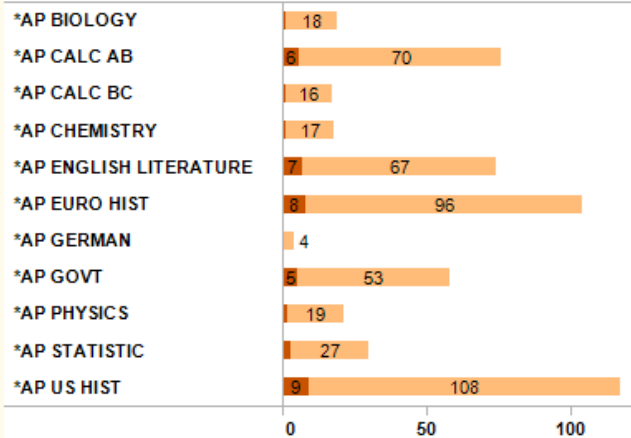
### Advanced Placement (AP) by Grade



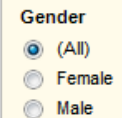
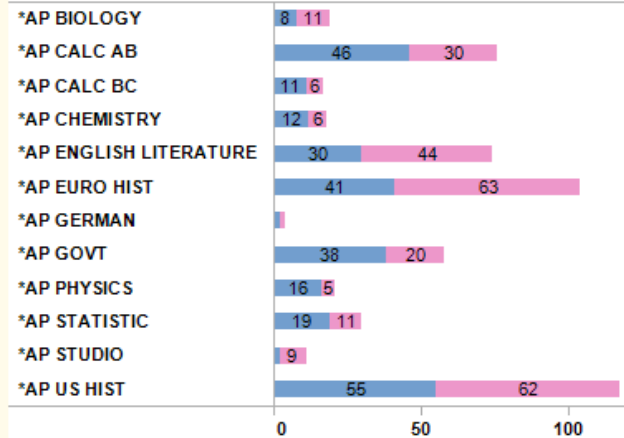
### Advanced Placement (AP) by Race/Ethnicity



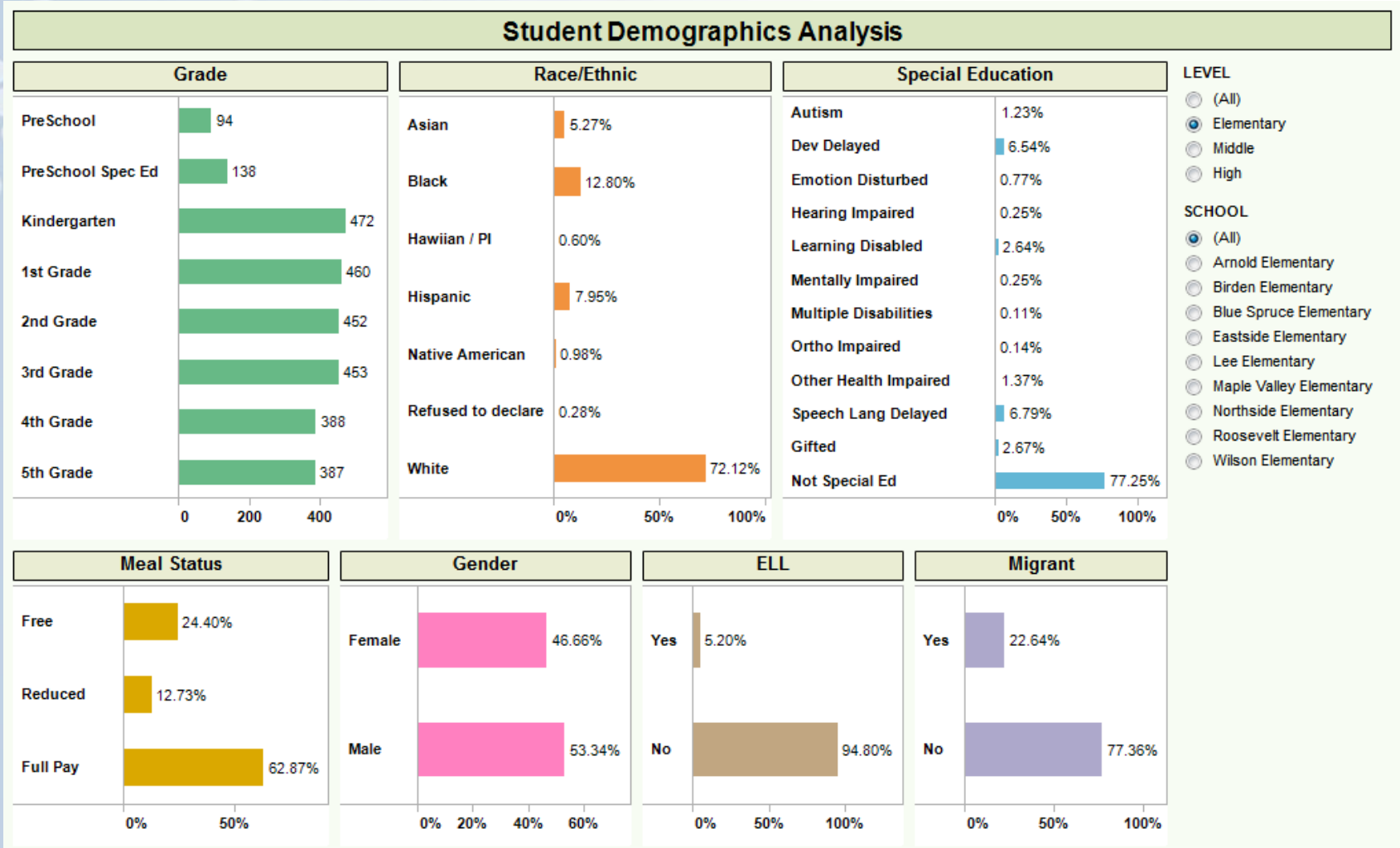
### Advanced Placement (AP) by SES



### Advanced Placement (AP) by Gender



# Student Demographics Analysis



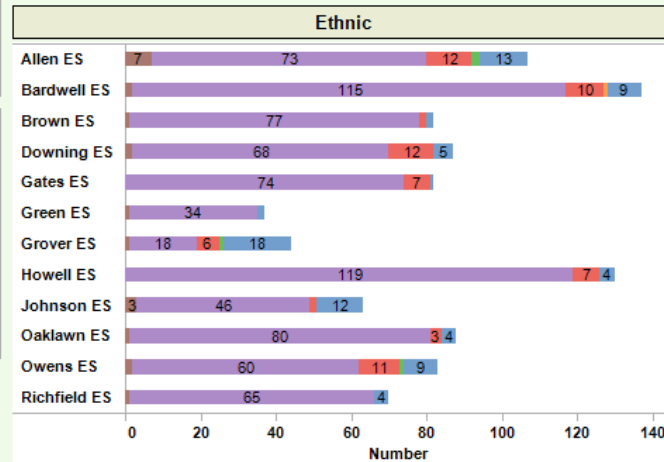
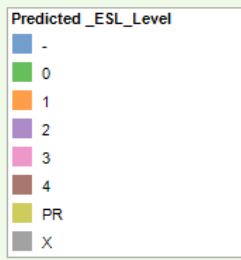
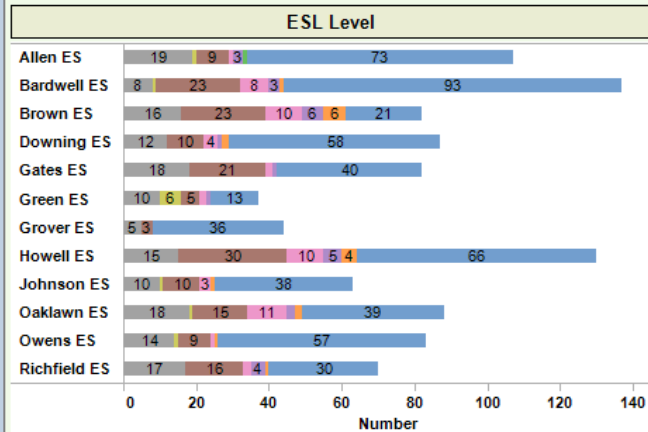
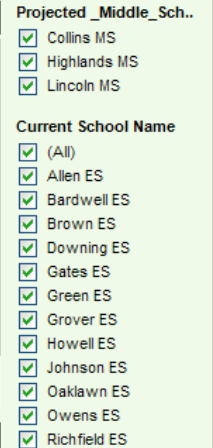
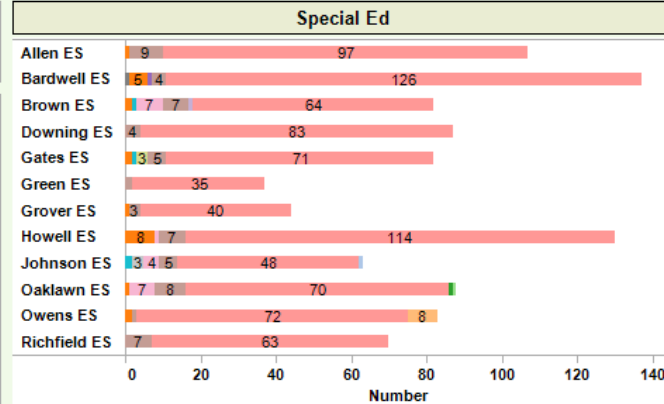
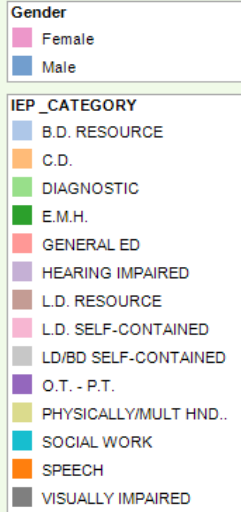
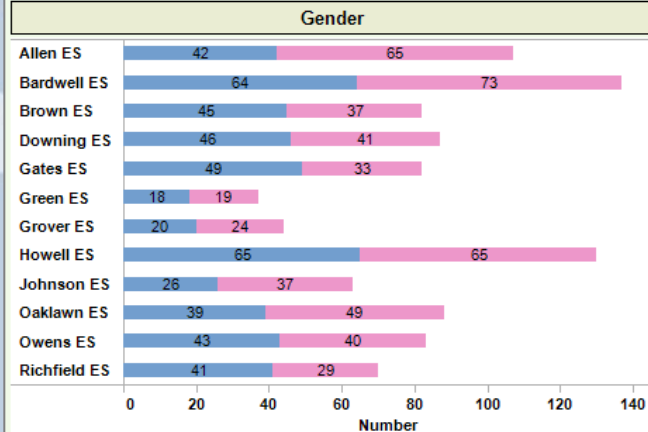
# Student Enrollment Heat Map



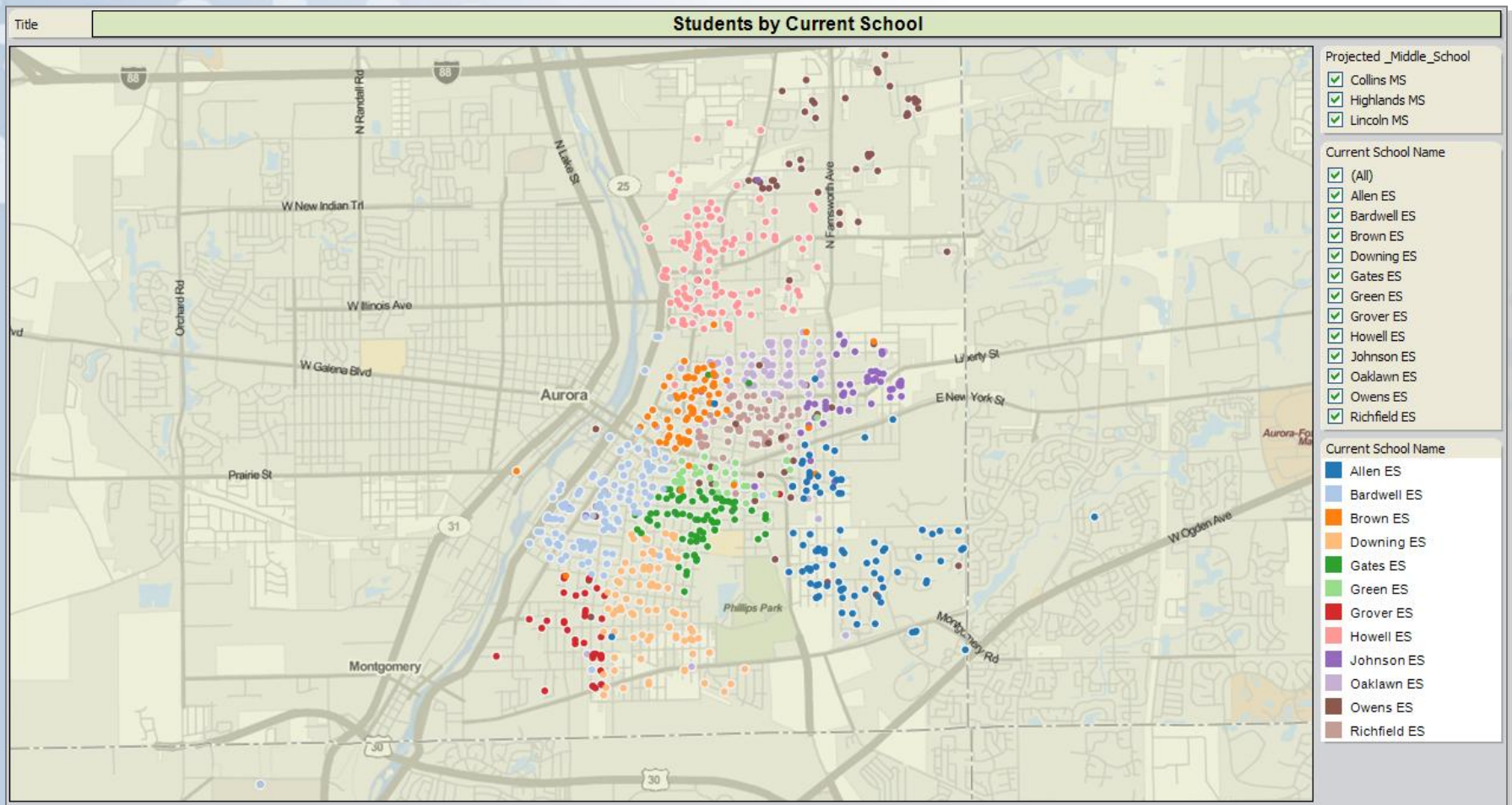


# Demographic Analysis by School

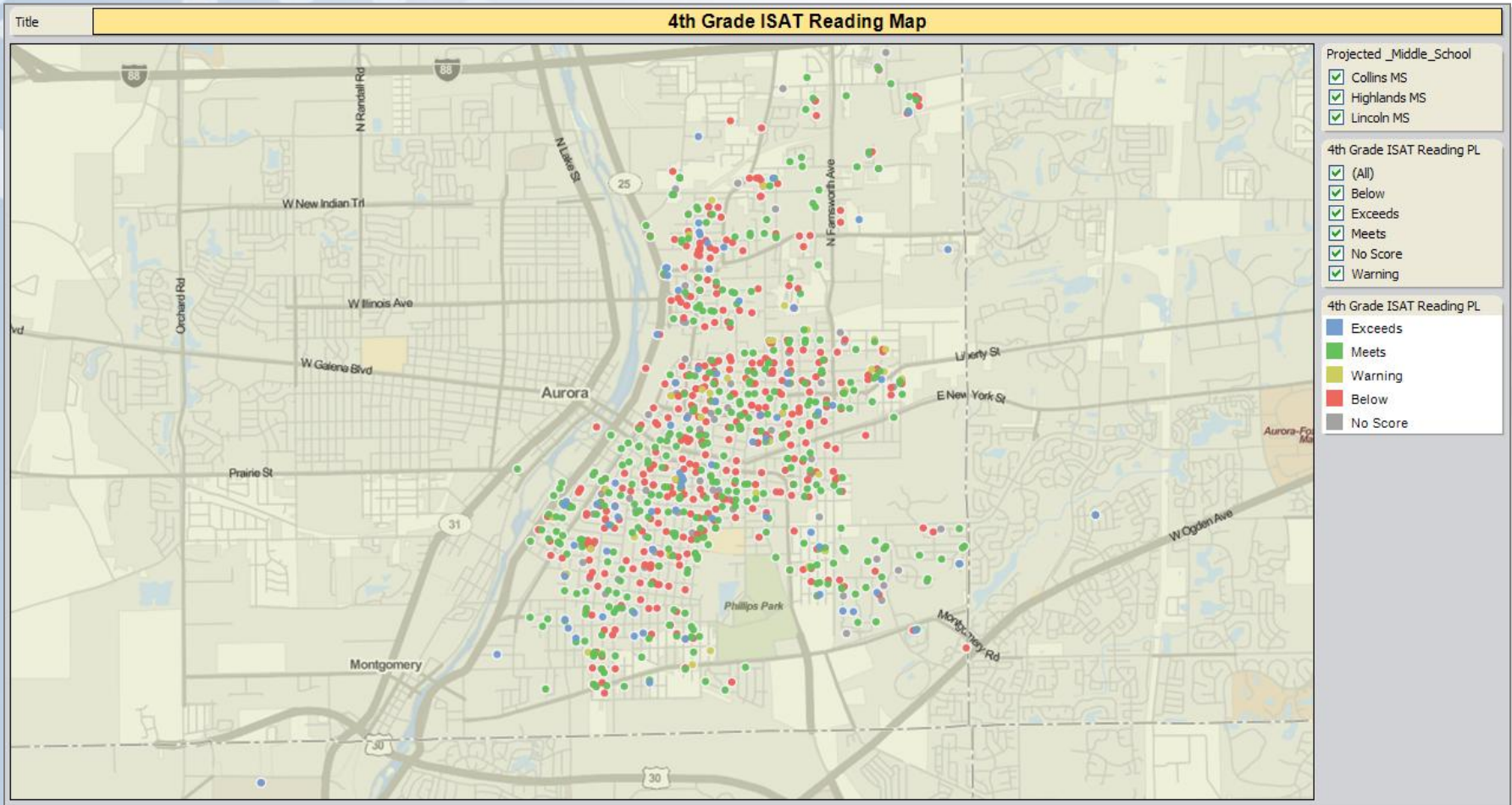
## Demographic Analysis by School



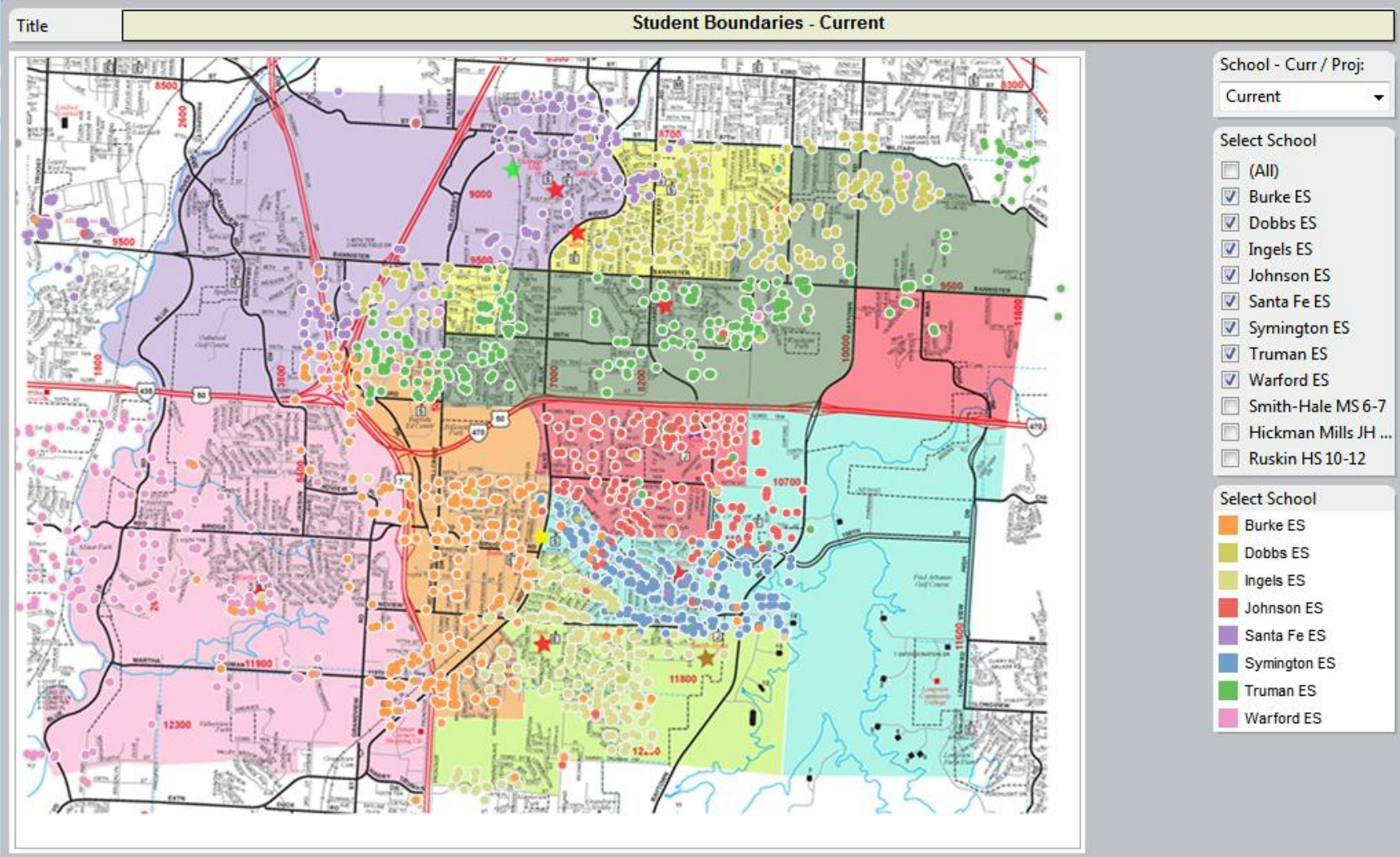
# Students by Current School



# Test Scores by School



# Demographics – Boundary Analysis

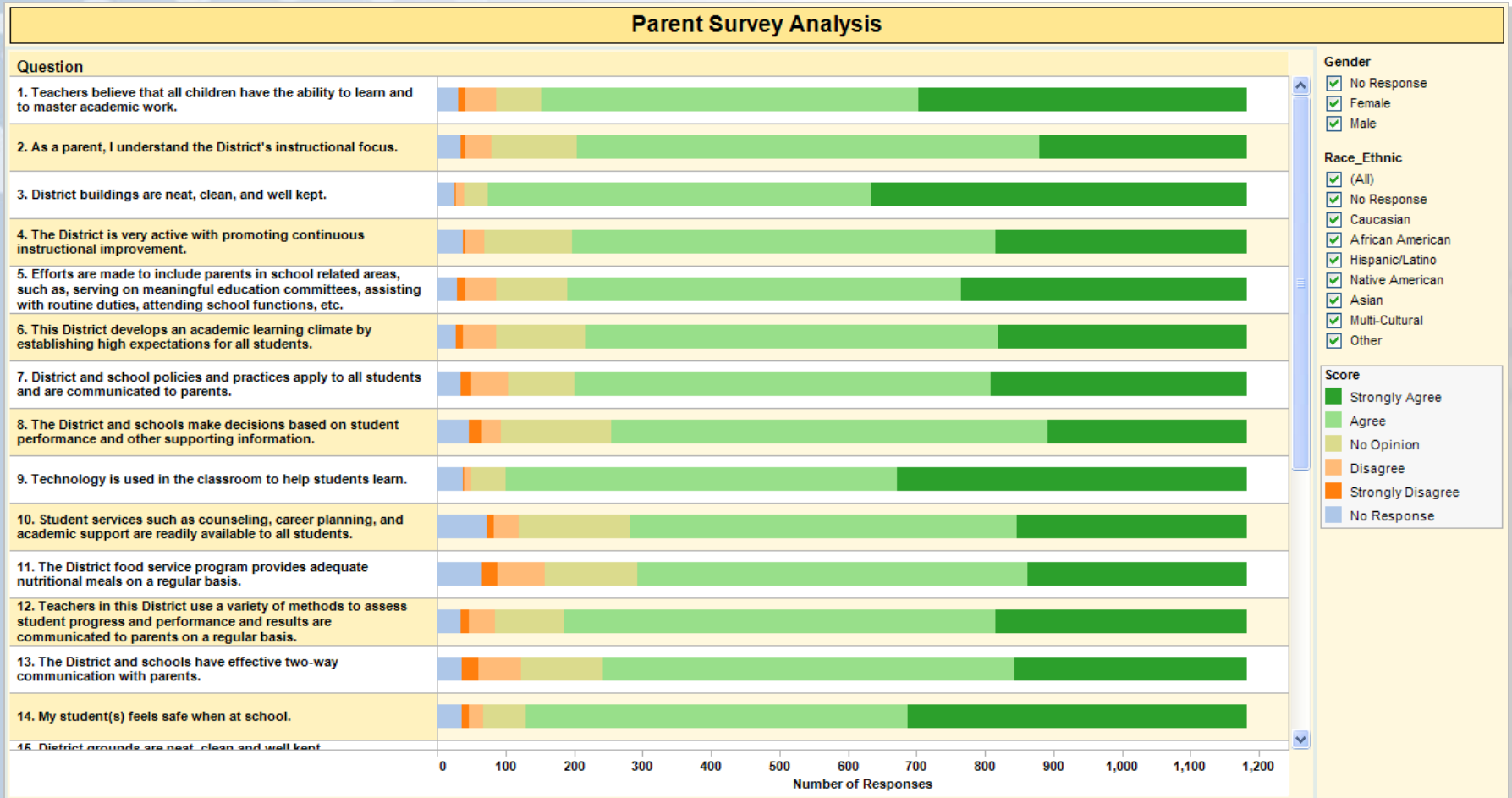


# CIC Analysis Portal

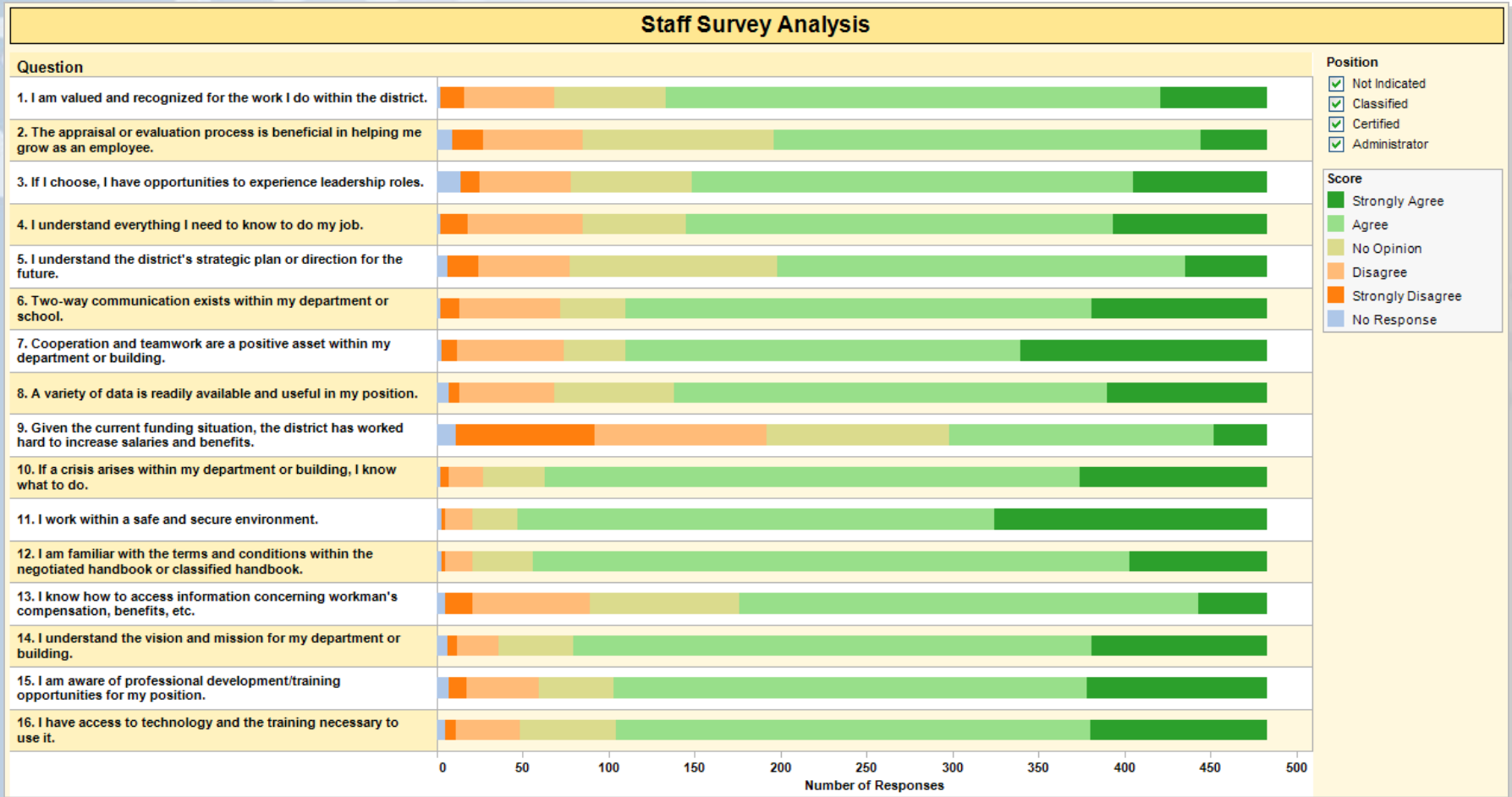
## Survey Examples



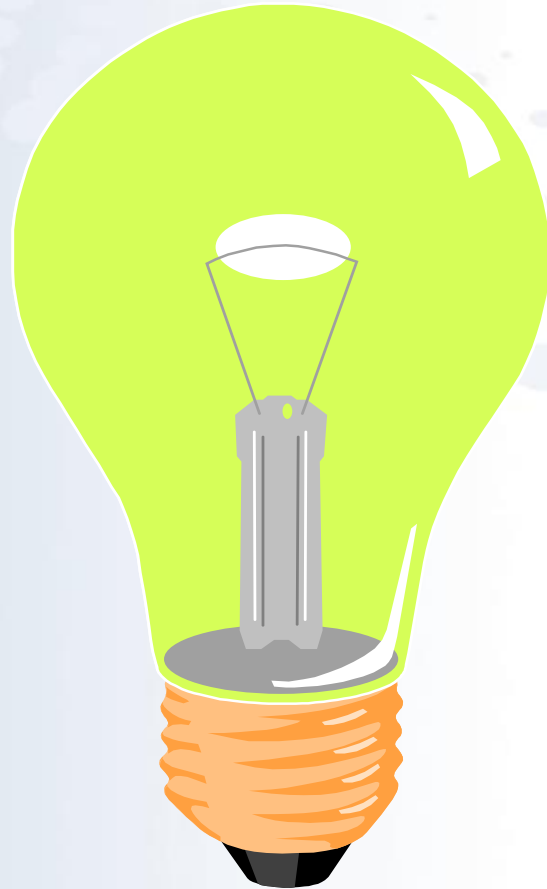
# Parent Survey Analysis



# Staff Survey Analysis



# Questions?



REPRODUCTION OR QUOTATION, IN WHOLE OR IN PART, IS STRICTLY PROHIBITED.  
Copyright © 2012 Infinite Campus, Inc. and Computer Information Concepts, Inc.