



# Update: Graduation Rates



Duluth Public Schools  
Graduating Class of 2019

Tawnyea Lake, PhD, NCSP  
Director of Assessment and Evaluation

# Graduation Rates - Background and Definition

— — —

At the beginning of grade 9, students are placed in a graduation cohort

At the end of four years, students are coded as graduated, continuing, dropped out, or unknown

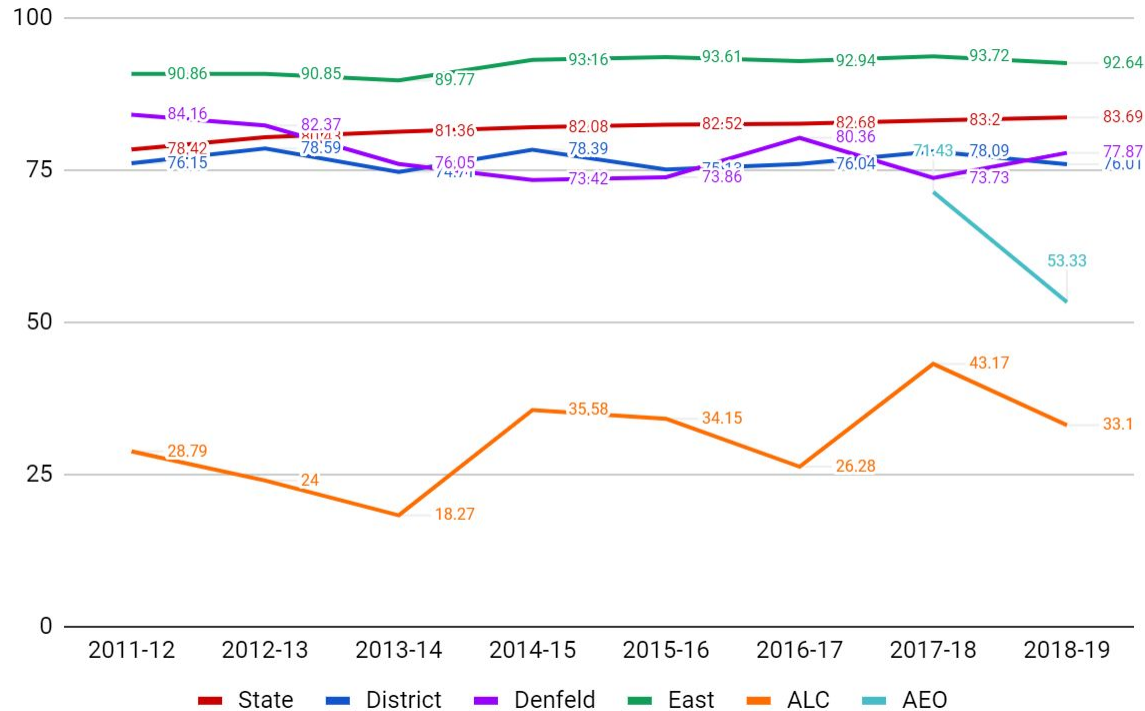
Grade rate = The number of graduates divided by total number of students in the cohort (includes graduates, dropouts, continuing students, and unknown students)

Care/treatment/correctional facilities are not included in the district rate

Must have 20 students in a group to “count” for North Star graduation

North Star graduation indicators include 4-year and 7-year graduation rates; All rates are reported as 4-year rates unless indicated otherwise

# Graduation Rates - State, District, Schools

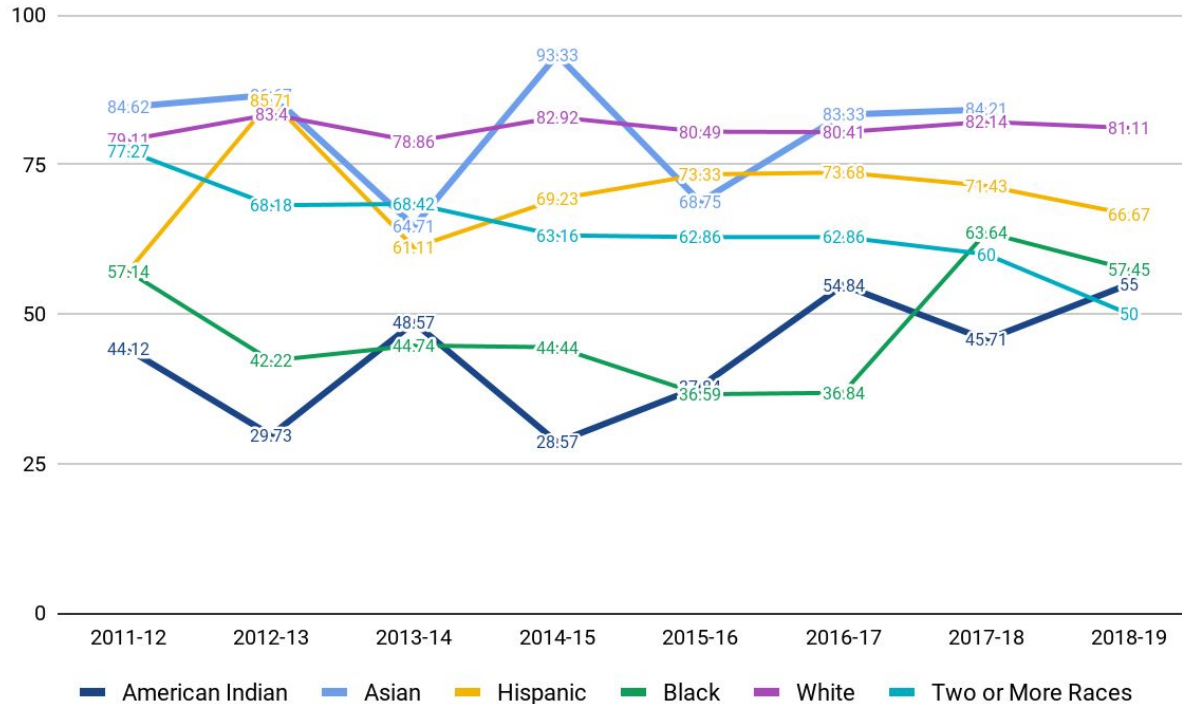


# Graduation Rates - State, District, Schools

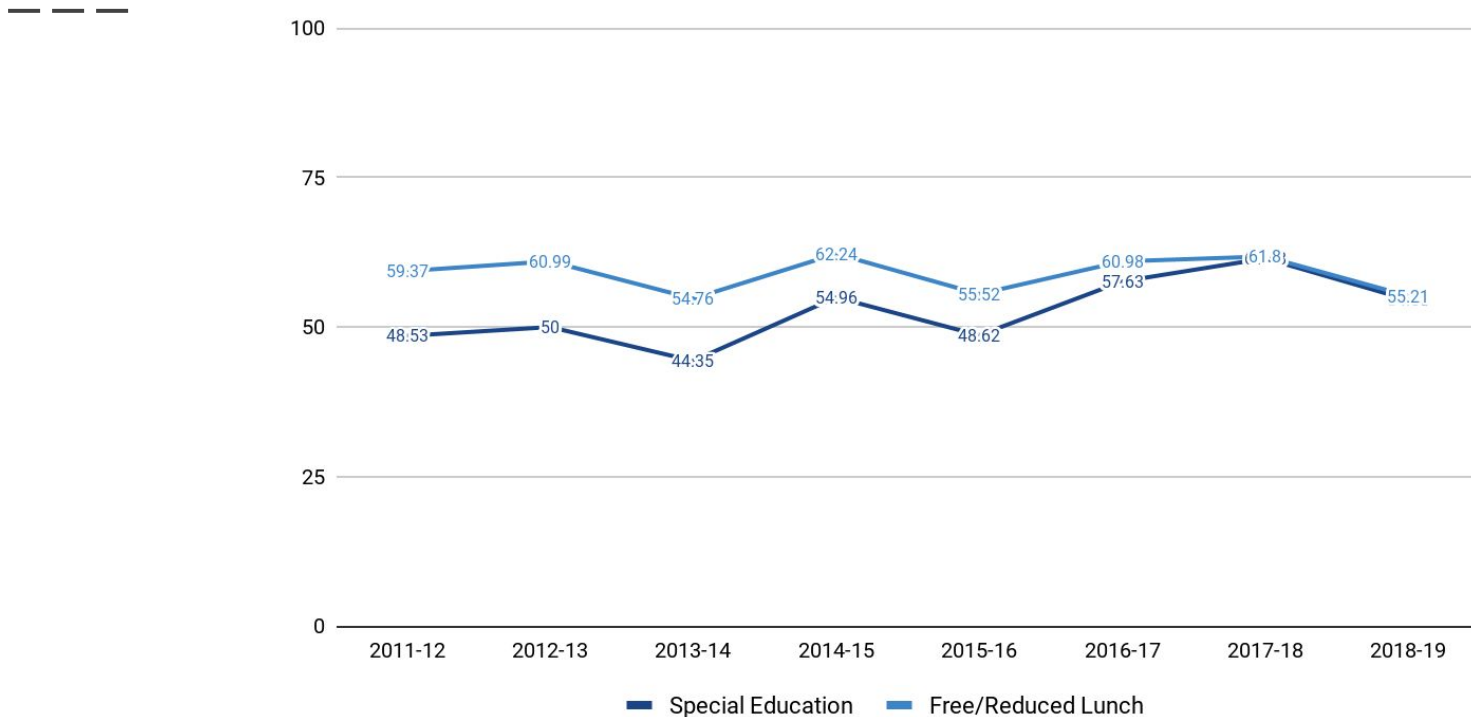
— — —

All Students	2011-12	2012-13	2013-14	2014-15	2015-16	2016-17	2017-18	2018-19
State	78.42	80.43	81.36	82.08	82.52	82.68	83.20	83.69
District	76.15	78.59	74.71	78.39	75.13	76.04	78.09	76.01
Denfeld	84.16	82.37	76.05	73.42	73.86	80.36	73.73	77.87
East	90.86	90.85	89.77	93.16	93.61	92.94	93.72	92.64
ALC	28.79	24	18.27	35.58	34.15	26.28	43.17	33.10
AEO	*	*	*	*	*	*	71.43	53.33

# Graduation Rates - District, By Student Group



# Graduation Rates - District, By Student Group



# Graduation Rates History, District, By Student Group

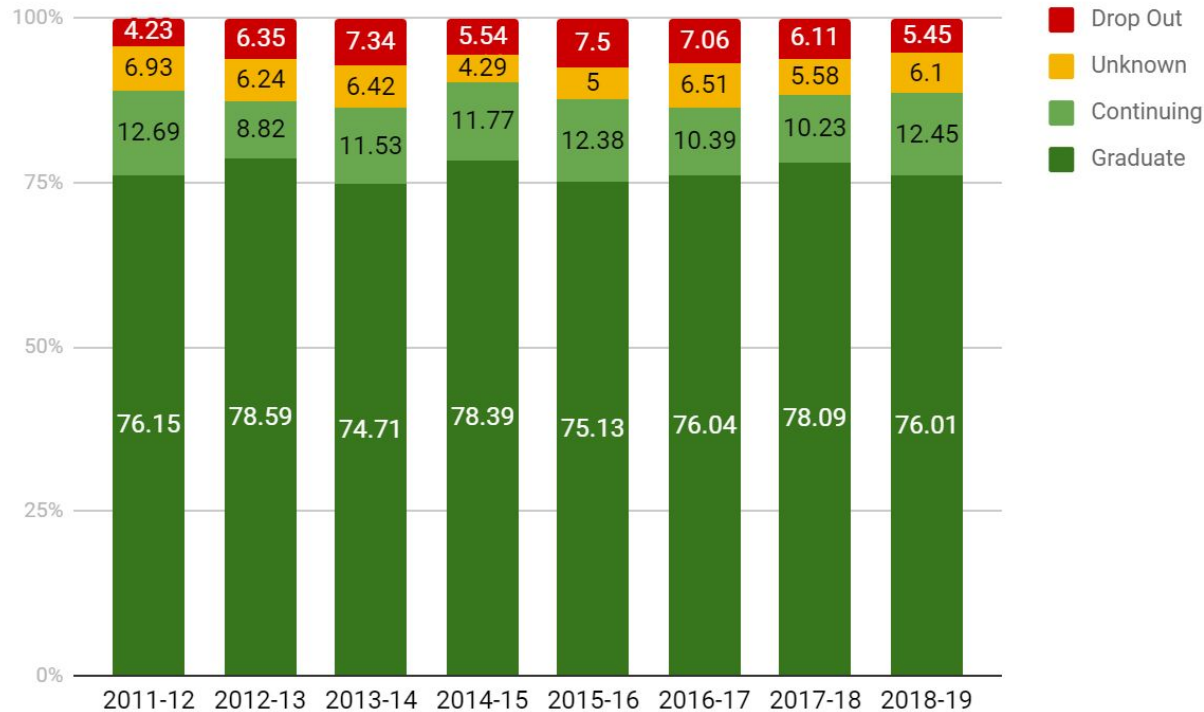
District	2011-12	2012-13	2013-14	2014-15	2015-16	2016-17	2017-18	2018-19
All Students	76.15	78.59	74.71	78.39	75.13	76.04	78.09	76.01
American Indian	44.12	29.73	48.57	28.57	37.84	54.84	45.71	55.00
Asian	84.62	86.67	64.71	93.33	68.75	83.33	84.21	*
Hispanic	57.14	85.71	61.11	69.23	73.33	73.68	71.43	66.67
Native Hawaiian	*	*	*	*	*	*	*	*
Black	57.14	42.22	44.74	44.44	36.59	36.84	63.64	57.45
White	79.11	83.4	78.86	82.92	80.49	80.41	82.14	81.11
Two or More Races	77.27	68.18	68.42	63.16	62.86	62.86	60.00	50.00
English Learner	*	*	*	*	*	*	*	*
Special Education	48.53	50	44.35	54.96	48.62	57.63	61.48	54.55
Free/Reduced Lunch	59.37	60.99	54.76	62.24	55.52	60.98	61.80	55.21

Duluth School District - Graduating Class of 2019

Student Group	Number of Graduates	Number of Students In Cohort	Percent Graduating On-Time (4-years)
All Students	586	771	76.01
American Indian/Alaskan Native	11	20	55.00
Asian	*	8	*
Hispanic	12	18	66.67
Black	27	47	57.45
Native Hawaiian or Other Pacific Islander	*	0	*
White	498	614	81.11
Two or More Races	32	64	50.00
English Learner	*	4	*
Special Education	72	132	54.55
Free/Reduced Priced Meals	196	355	55.21



# Graduation Rates - District History, By End Status



# Graduation Rates - District, Cohorts Tracked Over Time

Cohort Year	Graduated in Four Years	Graduated in Five Years	Graduated in Six Years	Graduated in Seven Years
2011-2012	76.15	77.87	80.18	82.10
2012-2013	78.59	80.07	82.1	82.72
2013-2014	74.71	78.5	80.41	80.67
2014-2015	78.39	82.09	82.95	84.15
2015-2016	75.13	78.43	79.90	81.39
2016-2017	76.04	80.16	81.13	TBD
2017-2018	78.09	80.03	TBD	TBD
2018-2019	76.01	TBD	TBD	TBD

# Graduation Rates - Themes

— — —

The district's overall 4-year, on-time graduation rate decreased from 78.09 for the graduating class of 2018 to 76.01 for the graduating class of 2019.

The dropout rate has steadily decreased since 2015-2016.

The district's 4-year, on-time graduation rate is below the state average.

The graduation rate for American Indian students increased from 45.71 to 55.00 and is above the state average. The district's graduation rates decreased for all other student groups.

The graduation rate for Denfeld High School increased from 73.73 to 77.87. The graduation rates decreased for all other high schools in the district.

# Appendices

Cells with fewer than 10 students are suppressed to maintain data privacy  
Cells with 20 or fewer students do not “count” for accountability purposes

**2018-2019  
School-Level Data  
Cohort Size**

Academic Excellence Online - Graduating Class of 2019

Student Group	Number of Graduates	Number of Students In Cohort	Percent Graduating On-Time (4-years)
All Students	8	15	53.33
American Indian/Alaskan Native	*	0	*
Asian	*	0	*
Hispanic	*	0	*
Black	*	1	*
Native Hawaiian or Other Pacific Islander	*	0	*
White	8	13	61.54
Two or More Races	*	1	*
English Learner	*	0	*
Special Education	*	3	*
Free/Reduced Priced Meals	*	8	*

## Denfeld High School - Graduating Class of 2019

Student Group	Number of Graduates	Number of Students In Cohort	Percent Graduating On-Time (4-years)
All Students	190	244	77.87
American Indian/Alaskan Native	*	6	*
Asian	*	2	*
Hispanic	*	9	*
Black	13	24	54.17
Native Hawaiian or Other Pacific Islander	*	0	*
White	149	178	83.71
Two or More Races	14	25	56.00
English Learner	*	1	*
Special Education	33	63	52.38
Free/Reduced Priced Meals	99	149	66.44

## East High School - Graduating Class of 2019

Student Group	Number of Graduates	Number of Students In Cohort	Percent Graduating On-Time (4-years)
All Students	340	367	92.64
American Indian/Alaskan Native	*	5	*
Asian	*	5	*
Hispanic	*	6	*
Black	*	8	*
Native Hawaiian or Other Pacific Islander	*	0	*
White	305	328	92.99
Two or More Races	14	15	93.33
English Learner	*	2	*
Special Education	30	43	69.77
Free/Reduced Priced Meals	67	85	78.82



Duluth Area Learning Center - Graduating Class of 2019

Student Group	Number of Graduates	Number of Students In Cohort	Percent Graduating On-Time (4-years)
All Students	48	145	33.10
American Indian/Alaskan Native	*	9	*
Asian	*	1	*
Hispanic	*	3	*
Black	6	14	42.86
Native Hawaiian or Other Pacific Islander	*	0	*
White	36	95	37.89
Two or More Races	4	23	17.39
English Learner	*	1	*
Special Education	8	23	34.78
Free/Reduced Priced Meals	28	113	24.78

## Arrowhead Academy - Graduating Class of 2019

Student Group	Number of Graduates	Number of Students In Cohort	Percent Graduating On-Time (4-years)
All Students	1	30	3.33
American Indian/Alaskan Native	*	8	*
Asian	*	0	*
Hispanic	*	0	*
Black	*	0	*
Native Hawaiian or Other Pacific Islander	*	0	*
White	1	19	5.26
Two or More Races	*	3	*
English Learner	*	0	*
Special Education	0	15	0.00
Free/Reduced Priced Meals	1	30	3.33

Merritt Creek Academy - Graduating Class of 2019

Student Group	Number of Graduates	Number of Students In Cohort	Percent Graduating On-Time (4-years)
All Students	*	1	*
American Indian/Alaskan Native	*	0	*
Asian	*	0	*
Hispanic	*	0	*
Black	*	0	*
Native Hawaiian or Other Pacific Islander	*	0	*
White	*	1	*
Two or More Races	*	0	*
English Learner	*	0	*
Special Education	*	1	*
Free/Reduced Priced Meals	*	1	*

## Rockridge Academy - Graduating Class of 2019

Student Group	Number of Graduates	Number of Students In Cohort	Percent Graduating On-Time (4-years)
All Students	4	16	25.00
American Indian/Alaskan Native	*	1	*
Asian	*	1	*
Hispanic	*	1	*
Black	*	4	*
Native Hawaiian or Other Pacific Islander	*	0	*
White	*	9	*
Two or More Races	*	0	*
English Learner	*	1	*
Special Education	*	7	*
Free/Reduced Priced Meals	4	16	25.00

# School-Level Data Over Time

# Graduation Rates History, Academic Excellence Online

Academic Ex Online	2011-12	2012-13	2013-14	2014-15	2015-16	2016-17	2017-18	2018-19
All Students	*	*	*	*	*	*	71.43	53.33
American Indian	*	*	*	*	*	*	*	*
Asian	*	*	*	*	*	*	*	*
Hispanic	*	*	*	*	*	*	*	*
Native Hawaiian	*	*	*	*	*	*	*	*
Black	*	*	*	*	*	*	*	*
White	*	*	*	*	*	*	71.43	61.54
Two or More Races	*	*	*	*	*	*	*	*
English Learner	*	*	*	*	*	*	*	*
Two or More Races	*	*	*	*	*	*	*	*
Special Education	*	*	*	*	*	*	*	*

# Graduation Rates History, Area Learning Center

Area Learning Center	2011-12	2012-13	2013-14	2014-15	2015-16	2016-17	2017-18	2018-19
All Students	28.79	24	18.27	35.58	34.15	26.28	43.17	33.10
American Indian	9.09	5.56	*	*	20	18.18	18.18	*
Asian	*	*	*	*	*	*	*	*
Hispanic	*	*	*	*	*	*	*	*
Native Hawaiian	*	*	*	*	*	*	*	*
Black	27.27	12.5	*	13.33	6.67	13.13	38.89	42.86
White	31.37	32.14	22.73	40.54	38.84	27.33	46.67	37.89
Two or More Races	*	*	*	*	20	*	27.27	17.39
Special Education	26.32	6.25	5.26	41.67	56.52	36	50.00	34.78
Free/Reduced Lunch	28.43	20.99	19.32	32.5	27.43	25.23	40.74	24.78

# Graduation Rates History, Denfeld

Denfeld High School	2011-12	2012-13	2013-14	2014-15	2015-16	2016-17	2017-18	2018-19
All Students	84.16	82.37	76.05	73.42	73.86	80.36	73.73	77.8
American Indian	75	53.85	80	30	35	73.33	46.67	*
Asian	*	*	*	*	*	*	*	*
Hispanic	*	*	*	72.73	*	*	*	*
Native Hawaiian	*	*	*	*	*	*	*	*
Black	62.5	50	57.14	57.14	42.86	55.56	78.57	54.17
White	86.55	85.6	77.78	77.37	80.66	84.66	77.71	83.71
Two or More Races	*	84.62	*	*	71.43	71.43	66.67	56.00
English Learner	*	*	*	*	*	*	*	*
Special Education	54.72	56.67	50.82	45	33.33	61.82	56.90	52.38
Free/Reduced Lunch	73.49	72.96	64.38	62.42	62.07	72.55	64.47	66.44



# Graduation Rates History, East

East High School	2011-12	2012-13	2013-14	2014-15	2015-16	2016-17	2017-18	2018-19
All Students	90.86	90.85	89.77	93.16	93.61	92.94	93.72	92.64
American Indian	*	*	*	*	*	*	*	*
Asian	*	*	*	*	*	*	90.00	*
Hispanic	*	*	*	*	*	*	*	*
Native Hawaiian	*	*	*	*	*	*	*	*
Black	83.33	81.82	69.23	62.5	66.67	*	83.33	*
White	91.38	91.14	91.09	95.06	95.43	95	94.36	92.99
Two or More Races	*	*	*	*	90.91	76.92	*	93.33
English Learner	*	*	*	*	*	*	*	*
Special Education	70.27	61.29	54.76	74.36	68.75	65.79	75.61	69.77
Free/Reduced Lunch	79.57	78.07	71.82	83.64	80.65	80.95	82.42	78.82

# Graduation Rates History, Rockridge Academy\*

Rockridge Academy	2011-12	2012-13	2013-14	2014-15	2015-16	2016-17	2017-18	2018-19
All Students	11.54	35.00	17.65	20.69	41.38	28.57	39.29	25.00
American Indian	*	*	*	*	*	*	*	*
Asian	*	*	*	*	*	*	*	*
Hispanic	*	*	*	*	*	*	*	*
Native Hawaiian	*	*	*	*	*	*	*	*
Black	14.29	33.33	*	36.36	50	23.08	20.00	*
White	*	*	*	15.38	38.46	*	60.00	*
Two or More Races	*	*	*	*	*	*	*	*
English Learner	*	*	*	*	*	*	*	*
Special Education	7.14	27.27	*	23.53	41.67	25	33.33	*
Free/Reduced Lunch	11.54	35	17.65	20.69	41.38	28.57	39.29	25.00

# Graduation Rates History, Arrowhead Academy\*

Arrowhead Academy	2011-12	2012-13	2013-14	2014-15	2015-16	2016-17	2017-18	2018-19
All Students	*	10.53	*	9.52	7.41	*	5.26	3.33
American Indian	*	*	*	10.00	*	*	*	*
Asian	*	*	*	*	*	*	*	*
Hispanic	*	*	*	*	*	*	*	*
Native Hawaiian	*	*	*	*	*	*	*	*
Black	*	*	*	*	*	*	*	*
White	*	*	*	*	4.76	*	*	5.26
Two or More Races	*	*	*	*	*	*	*	*
English Learner	*	*	*	*	*	*	*	*
Special Education	*	*	*	*	6.67	*	*	*
Free/Reduced Lunch	*	11.11	*	9.52	7.69	*	5.56	3.33

# Graduation Rates - ALC, Cohorts Tracked Over Time

Cohort Year	Graduated in Four Years	Graduated in Five Years	Graduated in Six Years	Graduated in Seven Years
2011-2012	28.79	35.37	41.40	46.45
2012-2013	24.00	33.86	41.09	46.2
2013-2014	18.27	35.20	40.8	42.3
2014-2015	35.58	48.9	54.1	58.8
2015-2016	34.15	46.8	51.6	55.5
2016-2017	26.28	42.0	44.0	TBD
2017-2018	43.17	49.1	TBD	TBD
2018-2019	33.0	TBD	TBD	TBD

# Graduation Rates - Denfeld, Cohorts Tracked Over Time

Cohort Year	Graduated in Four Years	Graduated in Five Years	Graduated in Six Years	Graduated in Seven Years
2011-2012	84.16	87.54	88.18	88.82
2012-2013	82.37	84.92	86.05	85.76*
2013-2014	76.05	80.8	81.93	81.93
2014-2015	73.42	82.03	82.79	82.41
2015-2016	73.86	79.04	80.18	80.18
2016-2017	80.36	86.85	88.15	TBD
2017-2018	73.73	78.54	TBD	TBD
2018-2019	77.87	TBD	TBD	TBD

\*Additional student added to cohort in 2014-2015, but did not graduate in 7 year timeframe.

# Graduation Rates - East, Cohorts Tracked Over Time

Cohort Year	Graduated in Four Years	Graduated in Five Years	Graduated in Six Years	Graduated in Seven Years
2011-2012	90.86	93.91	94.71	94.71
2012-2013	90.85	94.87	95.10	95.10
2013-2014	89.77	92.63	93.92	93.92
2014-2015	93.16	94.65	94.65	94.65
2015-2016	93.61	95.12	95.37	95.37
2016-2017	92.94	93.79	94.59	TBD
2017-2018	93.72	95.99	TBD	TBD
2018-2019	92.64	TBD	TBD	TBD

# Contact Information

Tawnyea Lake - PhD, NCSP  
Director of Assessment and Evaluation

218.336.8713

[tawnyea.lake@isd709.org](mailto:tawnyea.lake@isd709.org)

Additional data available on Minnesota Report Card: <http://rc.education.state.mn.us/>

MDE Website: Data Center > Data and Analytics > Students > Graduation Rates