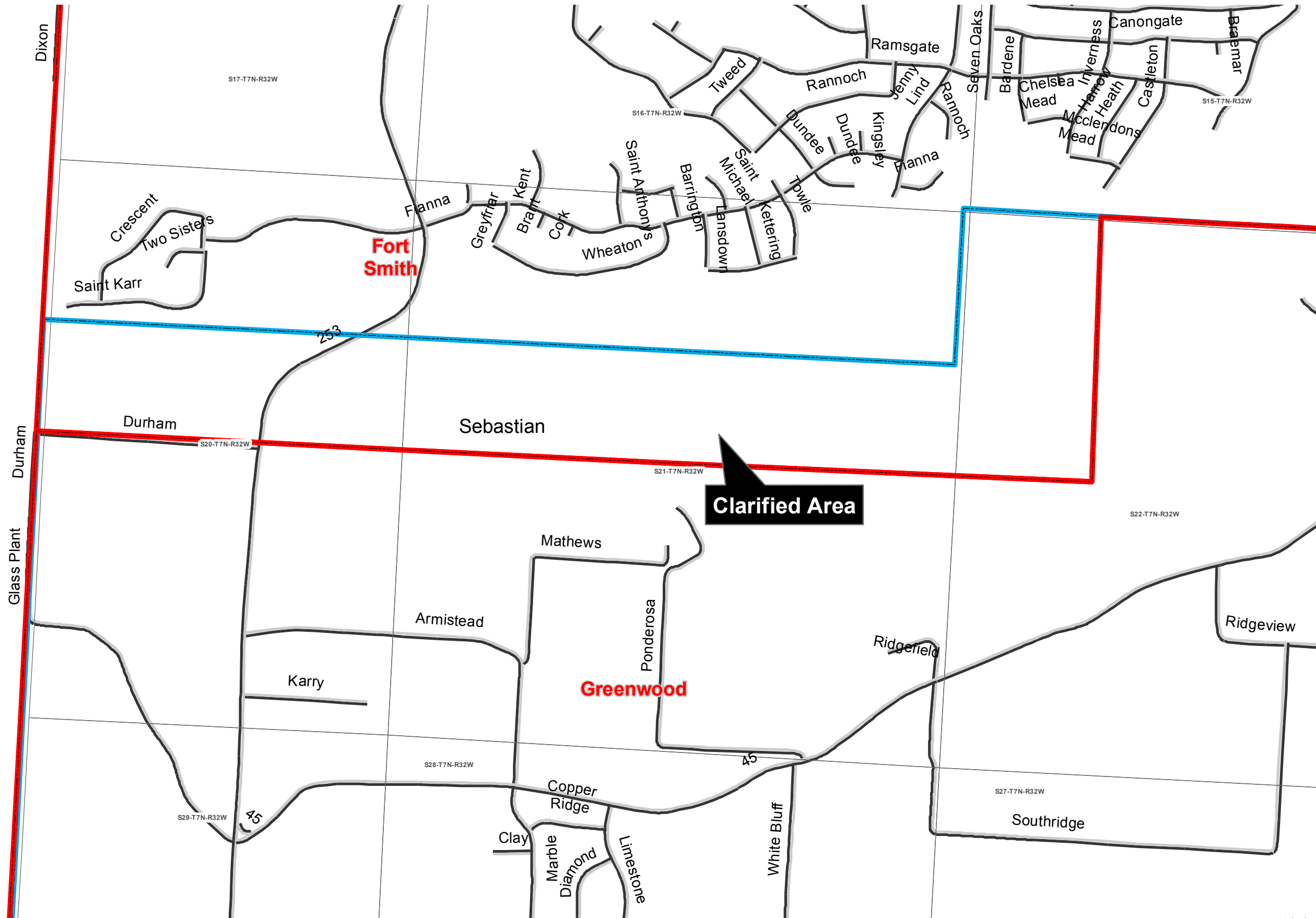


School Districts: Fort Smith - Greenwood Map Clarification EXHIBIT 3
July 2018






PREPARED FOR
 Superintendent Brubaker:
 Fort Smith
 Superintendent Ciesla:
 Greenwood

Map Date: 7/13/2018

AR CODE 6-13-1414.
 Boundary change by State Board of Education.
 (d) Upon an order from the state board to change or adjust boundary lines, it shall be the duty of the Department of Education to immediately make changes in the maps of the school districts of the county to show the changes of boundaries.
 (e) (1) The state board shall:
 (A) Issue an order establishing the changed boundaries; and
 (B) File the order with the:
 (i) County clerk in each county in which every affected school district lies;
 (ii) Secretary of State; and
 (iii) Arkansas Geographic Information Systems Office.
 (2) The county clerk shall make a permanent record of the order.
 (3) The boundaries established under this subsection shall be the boundaries of the affected school districts until changes are made according to the provisions of law.



Clarified Area

-  District Boundary in State System
-  Clarified District Boundary
-  Sections
-  Minor Road
-  County Boundary

