



Midwest Transit Equipment, Inc.
146 W. Issert Drive • P.O. Box 582
Kankakee, IL 60901
(800) 933-2412

February 20, 2018

Gavin School District 37
Mark Lindem
25775 W. Highway 134
Ingleside, IL 60041

Mark,

Thank you for allowing Midwest Transit Equipment, Inc. the opportunity to furnish this "Municipal Lease/Rental" quote on your school bus equipment needs. Units are stock subject to prior sales unless secured through Midwest Transit Equipment.

We are quoting a one year "Municipal Lease/Rental Plan. The District would make one payment on July 15, 2018, no other payments are due.

Municipal Interest Rates

The Federal Government passed a Bill to reduce the corporate tax rate from 35% to 21%. Municipal rates include a credit based on the corporate rate and this credit will be reduced. Gavin School District 37 interest rate on the current bus fleet is 2.80%. We are anticipating the rate to be close to 3.55% on a one year lease.

The Federal Government also increased the rate twice in the last 6 months by .50%. The banks are anticipating another increase of .25% in the spring. We are guaranteeing the bus lease price quoted below will not increase if the interest rate is higher than we estimated.

71 Passengers

Eight to ten (8-10) 2018 "One Year Old" 71 passenger buses with the Cummins ISB engine per the attached specifications U18-206. These units are currently being operated by the Richmond-Burton School District.

Annual Lease Price: \$12,228.00 each.

WC Passenger

One (1) 2018 "One Year Old" wheelchair passenger bus with the Cummins ISB engine per the attached specifications U18-553. This unit is currently being operated by the Richmond-Burton School District.

Annual Lease Price: \$13,737.00.

Both lease quotes include a "Midwest Transit Service Maintenance Contract". In December 2018 Midwest Transit would change oil and filters, perform the semi-annual brake inspection, 99 point inspection of the entire bus, grease required items, repair any warrantable items, and sign and prepare the brake inspection form. The District would be required to drive the buses to the test lane. *Any non-warrantable item or damage would be billed to the District. All work would be pre-approved by the District before repair.* This work would be done at the District's location. Midwest Transit would provide an insurance to work on the District property.

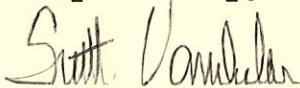
Lease price includes lettering, test lane, delivery, and license and title fees. Buses include an extended chassis and body warranty, see attachment.

Lease price also includes the removal of the video systems and 2-way radios from the current fleet and reinstallation of the systems into the new buses.

Credit cards will not be accepted for payments for new or used buses including purchase and/or financing.

Thank you again for this opportunity. I can be reached in the office at (800) 933-2412 ext. 1476, cell (219) 688-7527, or email at scott.vanderlee@midwesttransit.com.

Respectfully,



Scott Vanderlee
Sales Manager- School Bus

GAVIN SD 37

"ONE YEAR OLD" 2018 IC/CE B6.7 – 53 + 2 UP TO 47 + 3 PASSENGERS

CHASSIS

2018 IC/CE
50 STATE EMISSIONS COMPLIANT
276" WHEELBASE
50,000 PSI FRAME
CUMMINS B7.6L ELECTRONIC CONTROLLED
TURBO CHARGED / AFTER COOLED **DIESEL** ENGINE
240 HORSEPOWER / 560 FT/LB TORQUE
ALLISON 2500PTS TRANSMISSION
SYNTHETIC TRANSMISSION FLUID
ALLISON FUEL SENSE MAX PROGRAMMING
POWER STEERING
CRUISE CONTROL
TILT STEERING COLUMN
ANTILOCK HYD. BRAKES W/TRACTION CONTROL
DISC BRAKES FRONT AND REAR
12 X 3 BOSCH PARKING BRAKE W/INTERLOCK
AUTOMATIC PARKING BRAKE CONTROL
SYNTHETIC LUBE FOR FRONT AND REAR OIL SEALS
10,000 # FRONT AXLE
10,000 # FRONT PARABOLIC TAPER LEAF SPRINGS
19,800 # REAR AXLE – 5.13 RATIO
21,000 # REAR SUSPENSION VARIABLE RATE
FRONT & REAR SHOCK ABSORBERS
11R22.5G HANKOOK AH12 STEER FRONT TIRES
11R22.5G HANKOOK Z35A M&S REAR TIRES
22.5 x 8.25 " HUB PILOTTED DISC WHEELS
200 AMP BOSCH ALTERNATOR
TRIPLE 12 VOLT BATTERIES – 1,950 CCA TOTAL
DELCO REMY STRATER 12 VOLT
MANUAL RESET CIRCUIT BREAKERS
100 GALLON FUEL TANK BFR –RH FILL
TWIN ELEMENT FUEL FILTER
SELECTIVE REDUCTION CATALYST –SCR
DIESEL PARTICULATE FILTER
DIESEL OXIDATION CATALYST
WARNER ELECTRIC FC-550 FAN DRIVE
750 WATT ENGINE BLOCK HEATER
ENGINE OIL COOLER - INTEGRAL
HEAVY DUTY DRY AIR CLEANER
RESTRICTION INDICATOR - AIR CLEANER
ELECTRONIC FAST IDLE
HEAVY DUTY FRONT BUMPER
FRONT & REAR TOW HOOKS
TILT HOOD AND FENDERS, EASY TILT
AERO HALOGEN HEAD LAMPS
DAYTIME RUNNING LIGHTS
HEADLAMP ALARM
DUAL ELECTRIC HORNS
LOW COOLANT ALARM
ENG. ALARM - LOW OIL PRESS / HIGH WATER TEMP.
BRAKE WARNING LAMP AND BUZZER
TRANSMISSION TEMPERATURE GAUGE
SPEEDOMETER AND ODOMETER
TACHOMETER AND VOLTMETER
HOURMETER / AMMETER
OIL PRESS / WATER TEMP / FUEL LEVEL GAUGES
KEYED ALIKE IGNITIONS
ON BOARD IP DIAGNOSTIC DISPLAY

BODY

2018 IC/CE 7200 CONVENTIONAL – 33' 05"
FMVSS BODY CONSTRUCTION
78" HEADROOM W / 12" WINDOW OPENINGS
KOROSEAL PEBBLE TOP STEP TREADS
DUAL STAINLESS STEEL ENTRANCE AREA GRAB RAILS
LOCKING FUEL DOOR & DEF DOOR
LOCKING BATTERY COMPARTMENT
LOCKING ELECTRICAL ACCESS PANEL
ACCESS COVER-FUEL SENDER
ELECTRIC OPEN OUT ENT. DOOR W/VANDAL LOCK
OUTSIDE ASSIST HANDLE – ENTRANCE DOOR
DUAL DOOR CONTROLS MOUNTED ON STEERING WHEEL
& LH SWITCH PANEL
REAR EMER. DOOR W/VANDAL LOCK & INTERLOCK
RETAINER FOR EMERGENCY DOOR
43" RH FRONT LIFT DOOR W/VANDAL LOCK & INTERLOCK
INSULATION-ROOF & SIDES 1 1/2"
INSULATION NOISE REDUCTION – ROOF BOWS
ACOUSTIC HEADLINER – FULL LENGTH
W/SOUND INSULATION – FULL LENGTH
HEADLINER FASTENED W/SCREWS
ALL VANDAL LOCKS – KEYED ALIKE
BODY UNDERCOAT – FIRE RESISTANT TTC
14 GAUGE ROOF BOWS

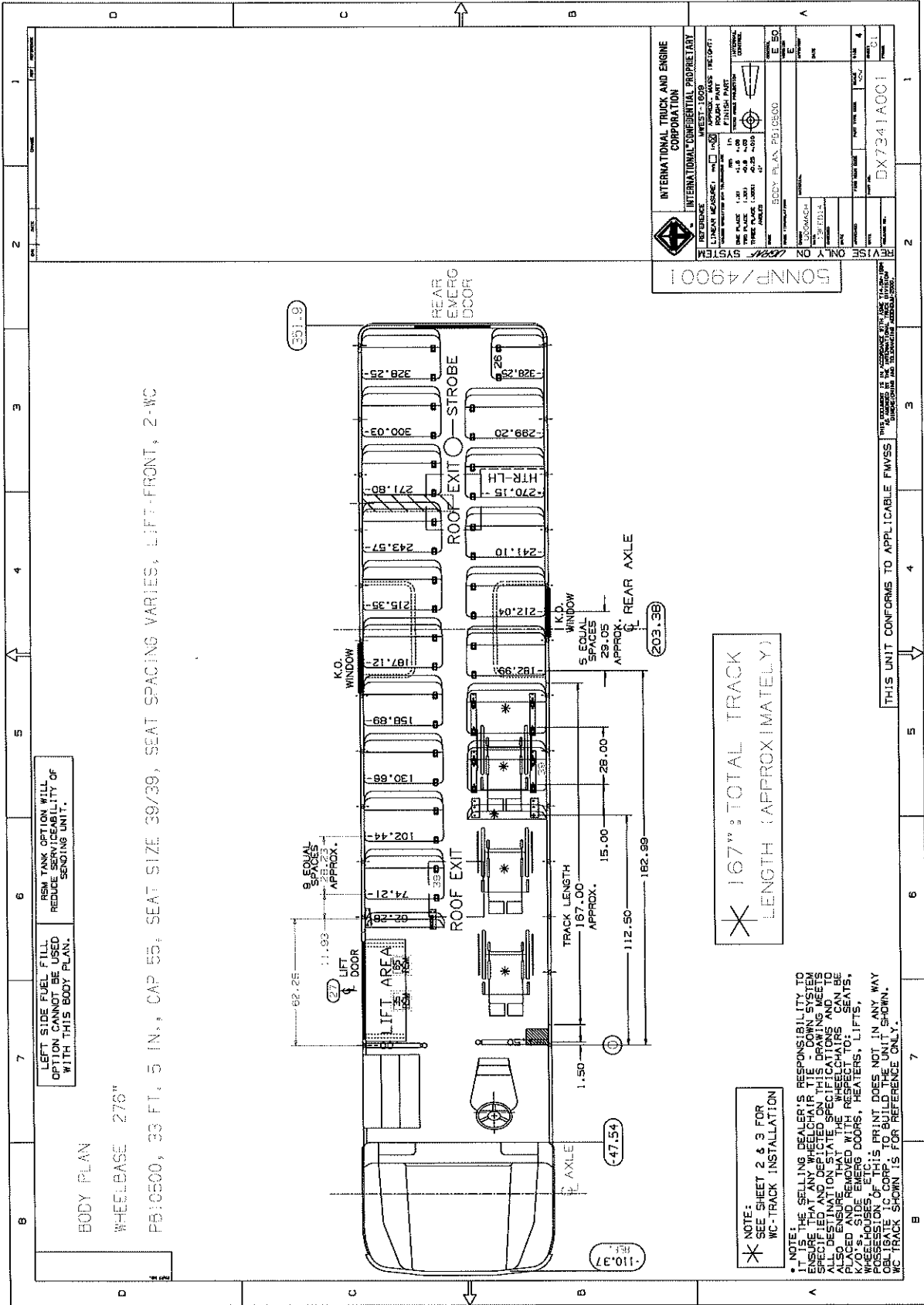
U18-553

BODY

16 GAUGE 20" EXTENDED SKIRT PANELS
16 GAUGE SMOOTH SIDE PANELS
4 EXTERIOR RUB RAILS
TOP EDGE OF RUB RAILS SEALED
3-PIECE FLAT / TINTED WINDSHIELD – 73%
STATIC ROOF VENT
(2) TRANSPEC ROOF HATCHES / VENTS
(2) EMERGENCY PUSH OUT WINDOWS
WINDOW STOP LINES
STORM GLASS - DRIVERS WINDOW
STORM GLASS – COMPLETE ENTRANCE DOOR
TINTED TEMPERED SIDE WINDOWS – 28%
LOWER GLASS – REAR EMERGENCY DOOR
2 AUXILIARY DEFROSTER FANS
MANUAL RESET CIRCUIT BREAKERS
DUAL BUTTERFLY HANDLE CUT OFF VALVES-HEATERS
HEATER BOOSTER PUMP
CONSTANT TORQUE CLAMPS – HEATER HOSES
DRIVER'S HEATER / DEFROSTER W / FILTER - 90,000 BTU
STEP WELL HEATER / DEFROSTER - 50,000 BTU
REAR HEATER - 2 FANS W / FILTER - 84,500 BTU
ARMORED CLEARANCE / CLUSTER LAMPS - LED
7" AMBER DIRECTIONAL FRONT AND REAR
ARMORED SIDE DIRECTIONAL - LED
7" REAR STOP/TAIL
7" BACK UP LAMPS
BACKUP ALARM 107db
PLASTIC LIGHT BARS
DUAL ROW DOME LAMPS
DELUXE DRIVERS DOME LAMP - SEPARATE SWITCH
LIFT AREA DOME LAMP
LIFT DOOR BOARDING LIGHT
ICC RED LAMP OVER REAR EMERGENCY DOOR
8 LAMP WARNING SYSTEM W/HOODS
8 WAYS OPERATE UP TO 55 MPH
LOW PROFILE STROBE LAMP W/PILOT LIGHT
12 VOLT POWER SOCKET
8 LAMP LIGHT MONITOR
POST TRIP INSPECTION MONITOR W / ALARM & DOME LIGHT TIMER
BATTERY CUT OFF SWITCH IN BATTERY COMPARTMENT
EXTERIOR LIGHT CHECK SYSTEM
MAGNETIC BODY CUT-OFF SOLENOID
NOISE SUPPRESSION SWITCH
AM / FM / CD WEATHER BAND RADIO W / PA & 8 SPEAKERS
BATTERY CUT OFF SWITCH LOCATED IN BATTERY COMPARTMENT
DOOR SWITCH - STEP WELL LAMP
REAR DOOR BUZZER & PILOT LAMP
LIFT DOOR BUZZER & PILOT LAMP
ENTRANCE / EMERGENCY DOOR HEADER PADS
LETTERING TO ILLINOIS / FEDERAL REQ.
POLYURETHANE EXTERIOR PAINT
PAINTED BLACK AROUND 8 WAY LAMPS
3M DIAMOND GRADE REFLECTIVE TAPE – SIDES & EXITS
3M DIAMOND GRADE REFLECTIVE SCHOOL BUS SIGNS – FRONT & REAR
DOT SCHOOL BUS HIGH BACK SEAT BELT READY SEATS
DOT SCHOOL BUS HIGH BACK BARRIERS
GRAY VINYL UPHOLSTERY
PADDED SHOULDER RAILS
NATIONAL 2000 DRIVERS SEAT W/FABRIC INSERT & ARMREST
DRIVERS 3 PT. SEAT BELT / WITH LOCKING RETRACTOR & ADJ. "D" LOOP
REAR RUBBER FENDERETTES
FRONT & REAR RUBBER MUD FLAPS – ANTI SPRAY – ANTI SAIL
5/8" EXTERIOR GRADE PLYWOOD SUB FLOOR
DARK GRAY KOROSEAL FLOOR AND STEPS
ABS MOLDED WHEELHOUSE - ALUMINUM AISLE TRIM
(1) 9 3/8" X 6" CERTIFICATE HOLDER
6 X 30 INSIDE MIRROR – PADDED
6 X 30 PLEXIGLASS SUN VISOR DRIVER FRONT
6 X 30 DRIVER'S WINDOW VISOR LH OF DRIVER
ROSCO OPEN VIEW REARVIEW MIRRORS – REMOTE POWERED
ROSCO MINI HAWKEYE CROSS VIEW MIRRORS
ALL EXTERIOR MIRRORS HEATED
STAINLESS STEEL FASTENERS FOR EXTERIOR LIGHTS
ELEC. STOP ARM - OCTAGON W / LED STROBE LIGHTS
ELEC. POLY CROSSING ARM W/INTERRUPT SWITCH
WET ARM WASHER SYSTEM-6 QT. CAP.W/SINGLE SWITCH
ILLINOIS CERTIFICATION LABEL
SAFETY EQUIPMENT, FAK, BFK
COLORADO CONSTRUCTION PACKAGE
PREWIRE FOR 2-WAY AND VIDEO SYSTEM
OVERHEAD BULKHEAD STORAGE COMPARTMENT W/ LATCHES
FRONT LOCATION - BRAUN NL 9191B WHEELCHAIR LIFT
(2) OPEN WHEELCHAIR POSITIONS BEHIND DRIVER FRONT
SURE-LOK 4-ROWS FLOOR TRACK WITH SHOULDER TRACK ABOVE WINDOWS
3 – SURE-LOC RETRACTABLE WHEELCHAIR TIE DOWNS
**3RD WHEELCHAIR PLACEMENT LOCATED UNDER TRACK SEATS LH SIDE

**FLOOR PLAN PICTURE ATTACHED

U18-553



LEFT SIDE FUEL FILL OPTION CANNOT BE USED WITH THIS BODY PLAN.

RSM TANK OPTION WILL REDUCE CAPACITY OF SEATING UNIT.

NOTE: SEE SHEET 2 & 3 FOR WC-TRACK INSTALLATION

NOTE: IT IS THE SELLING DEALER'S RESPONSIBILITY TO ENSURE THAT ANY WHEELCHAIR, THE DOWN SYSTEM SELECTED AND AN UNIFORM SPECIFICATIONS AND TO ALSO ENSURE THAT THE WHEELCHAIR CAN BE PLACED AND REMOVED WITH RESPECT TO SEATS, KITCHENS, REAR DOORS, HEATERS, LIFTS, WHEELBASE.

POSSESSION OF THIS PRINT DOES NOT IN ANY WAY OBLIGATE IC CORP. TO BUILD THE UNIT SHOWN. WC TRACK SHOWN IS FOR REFERENCE ONLY.

✱ 167.92' TOTAL TRACK LENGTH (APPROXIMATELY)

INTERNATIONAL TRUCK AND ENGINE CORPORATION

INTERNATIONAL CONFIDENTIAL PROPRIETARY

REFERENCE: SHEET 1-DIOR

LINEAR MEASURE: INCHES METERS

TRAVERSE MEASURE: INCHES METERS

UNIT PLACE: 1:81

THREE PLACE: 1:405

SCALE: 1:81

MODEL: BODY PLAN PB:0500

DATE: 10-20-89

REV: 4

BY: [Blank]

CHK: [Blank]

APP: [Blank]

DRAWING NO.: DX7341A001

SONNPF / 49001

WHEEL SYSTEM

THIS UNIT CONFORMS TO APPLICABLE FMVSS

THIS IS A MANUFACTURED UNIT AND THE DESIGN AND CONSTRUCTION ARE SUBJECT TO THE TRADE SECRET LAWS OF THE UNITED STATES OF AMERICA.

GAVIN SD 37
"ONE YEAR OLD" 2018 IC/CE ISB – 71 PASSENGERS

CHASSIS

2018 IC/CE
CURRENT EMISSIONS COMPLIANT FOR 2017
276" WHEELBASE
50,000 PSI FRAME
CUMMINS ISB6.7L ELECTRONIC CONTROLLED
TURBO CHARGED / AFTER COOLED DIESEL ENGINE
240 HORSEPOWER / 560 FT/LB TORQUE
ALLISON 2500PTS TRANSMISSION
**FUEL SENSE MAX, DYNAMIC SHIFT SENSING, NEUTRAL AT
STOP PREMIUM, ACCELERATION RATE MANAGEMENT**
SYNTHETIC TRANSMISSION FLUID
POWER STEERING
CRUISE CONTROL WITH ELECTRONIC FAST IDLE
TILT STEERING COLUMN – 5 POSITION
FULL POWER HYDRAULIC BRAKE SYSTEM
ANTILOCK HYD. BRAKES W/TRACTION CONTROL
DISC BRAKES FRONT AND REAR - (4) 70mm PISTONS
12 X 3 BOSCH PARKING BRAKE W/INTERLOCK
PUSH/PULL BRAKE CONTROL KNOB ON DASH
SYNTHETIC LUBE FRONT AND REAR AXLES
10,000 # FRONT AXLE
10,000 # FRONT PARABOLIC TAPER LEAF SPRINGS
19,800 # REAR AXLE – 5.13 RATIO
21,000 # REAR SUSPENSION VARIABLE RATE
FRONT & REAR SHOCK ABSORBERS
11R22.5G HANKOOK AH12 STEER FRONT TIRES
11R22.5G HANKOOK Z35A M&S REAR TIRES
22.5 x 8.25 " DISC WHEELS - BLACK
200 AMP BOSCH ALTERNATOR
TRIPLE 12 VOLT BATTERIES – 1,950 CCA TOTAL
BATTERY CUT OFF SWITCH IN COMPARTMENT
DELCO REMY STARTER 12 VOLT 38MT
MANUAL RESET CIRCUIT BREAKERS
100 GALLON FUEL TANK MOUNTED REAR BFR -RH FILL
TWIN ELEMENT FUEL FILTER
HEATED FUEL / WATER SEPERATOR
SCR SYSTEM WITH 12 GALLON DEF TANK
DIESEL PARTICULATE FILTER
DIESEL OXIDATION CATYLIST
WARNER ELECTRIC FC-550 FAN DRIVE
750 WATT ENGINE BLOCK HEATER
ENGINE OIL COOLER - INTEGRAL
HEAVY DUTY DRY AIR CLEANER
RESTRICTION INDICATOR - AIR CLEANER
HEAVY DUTY FRONT BUMPER
FRONT & REAR TOW HOOKS
TILT HOOD AND FENDERS, EASY TILT
AERO HALOGEN HEAD LAMPS
TOOL FREE BULB REPLACEMENT
HEADLAMP REMINDER ALARM
DAYTIME RUNNING LIGHTS
DUAL ELECTRIC HORNS
LOW COOLANT ALARM
TRANSMISSION TEMPERATURE GAUGE
ENG. ALARM - LOW OIL PRESS / HIGH WATER TEMP.
BRAKE WARNING LAMP AND BUZZER
SPEEDOMETER AND ODOMETER
TACHOMETER AND VOLTMETER
HOURMETER / AMMETER 150AMPS
OIL PRESS / WATER TEMP / FUEL LEVEL GAUGES
KEYED ALIKE IGNITIONS
ON BOARD IP DIAGNOSTIC DISPLAY

BODY

2018 IC/CE 7200 CONVENTIONAL – 33' 05"
FMVSS SCHOOL BUS BODY CONSTRUCTION
78" HEADROOM W/12" WINDOW OPENINGS
KOROSEAL PEBBLE TOP STEP TREADS
STAINLESS STEEL ENTRANCE DOOR GRAB RAILS
LOCKING FUEL DOOR & DEF DOOR
LOCKING BATTERY COMPARTMENT
LOCKING ELECTRICAL ACCESS PANEL
ALL BODY LOCKS KEYED ALIKE
ACCESS COVER - FUEL SENDING UNIT
ELECTRIC OPEN OUT ENT. DOOR W/KEY VANDAL LOCK
OUTSIDE ASSIST HANDLE – ENTRANCE DOOR
DUAL DOOR CONTROLS ON STEERING WHEEL & LH OF DR P
REAR EMERG DOOR W/VANDAL LOCK & INTERLOCK
RETAINER FOR EMERGENCY DOOR
INSULATION-ROOF & SIDES 1 1/2"
INSULATION NOISE REDUCTION – ROOF BOWS
ACOUSTIC PERORATED HEADLINER – FULL LENGTH
HEADLINER FASTENED W/SCREWS

U18-206

BODY

BODY UNDERCOAT – FIRE RESISTANT TTC
14 GAUGE ROOF BOWS
16 GAUGE 20" EXTENDED SIDE SKIRT PANELS
16 GAUGE SMOOTH SIDE PANELS
4 EXTERIOR RUB RAILS WITH SEALED TOP EDGE
3-PIECE FLAT / TINTED WINDSHIELD – 73%
STATIC ROOF VENT – NON CLOSING
(2) TRANSPEC ROOF HATCHES MODEL 1975
(2) EMERGENCY PUSH OUT WINDOWS
WINDOW STOP LINES
STORM GLASS - DRIVERS WINDOW
STORM GLASS – COMPLETE ENTRANCE DOOR
TINTED LAMINATED SIDE & REAR WINDOWS – 28%
LOWER GLASS – REAR EMERGENCY DOOR
2 AUXILIARY DEFROSTER FANS
DUAL HEATER CUT OFF VALVES ¼ TURN
HEATER CUT OFF VALVE IN DRIVERS AREA ¼ TURN
SELF PRIMING HEATER BOOSTER PUMP
CONSTANT TORQUE CLAMPS – HEATER HOSES
DRIVER'S HEATER / DEFROSTER - 90,000 BTU
STEP WELL HEATER / DEFROSTER - 50,000 BTU
REAR HEATER - 2 FANS - 84,500 BTU
MANUAL RESET CIRCUIT BREAKERS
ARMORED CLEARANCE / CLUSTER LAMPS - LED
7" AMBER DIRECTIONAL FRONT AND REAR
ARMORED SIDE DIRECTIONAL - LED
7" & 4" REAR STOP/TAIL
7" BACK UP LAMPS
BACKUP ALARM 107db
PLASTIC LIGHT BARS IN REMOVABLE TRACK
DUAL ROW DOME LAMPS
DRIVERS DOME LAMP - SEPARATE SWITCH
ICC RED LAMP OVER REAR EMERGENCY DOOR
8 LAMP WARNING SYSTEM W / HOOD VISORS
8 WAYS ACTIVATE UP TO 55 MPH
LOW PROFILE STROBE LAMP W/PILOT LIGHT
12 VOLT POWER SOCKET IN DRIVERS AREA
8 LAMP LIGHT MONITOR
POST TRIP INSPECTION MONITOR W / ALARM & DOME LIGHT TIMER
EXTERIOR LIGHT CHECK
MAGNETIC BODY CUT-OFF SOLENOID
BATTERY CUTOFF SWITCH IN BATTERY COMPARTMENT
NOISE SUPPRESSION SWITCH
AM/FM/CD RADIO WITH PA SYSTEM & 4 SPEAKERS
DOOR SWITCH - STEP WELL LAMP
REAR DOOR BUZZER & PILOT LAMP
ENTRANCE / EMERGENCY DOOR HEADER PADS
LETTERING TO ILLINOIS / FEDERAL REQ.
POLYURETHANE EXTERIOR PAINT
PAINTED BLACK AROUND 8 WAY LAMPS
3M DIAMOND GRADE REFLECTIVE TAPE – SIDES, REAR & EXITS
3M DIAMOND GRADE - SCHOOL BUS SIGNS – FRONT & REAR
DOT SCHOOL BUS HIGH BACK "BTI" SEAT BELT READY SEATS
DOT SCHOOL BUS HIGH BACK BARRIERS
42 OZ GRAY VINYL UPHOLSTERY
PADDED SHOULDER RAILS
NATIONAL 2000 DRIVERS SEAT W/FABRIC INSERT & ARMREST
DRIVERS 3 PT. SEAT BELT / WITH LOCKING RETRACTOR & ADJ. "D: LOOP
W / BLAZE ORANGE WEBBING
FRONT RUBBER MUD FLAPS
REAR RUBBER MUD FLAPS – ANTI SRPAY – ANTI SAIL
5/8" EXTERIOR GRADE PLYWOOD SUB FLOOR
EXTRA SEALER SIDE WALL TO FLOOR & WHEELPOCKETS
DARK GRAY KOROSEAL FLOOR AND STEPS
ALUMINUM AISLE TRIM
ABS MOLDED WHEELHOUSE
(1) 9 3/8" X 6" CERTIFICATE HOLDER
6 X 30 INSIDE MIRROR – PADDED
6 X 30 PLEXIGLASS SUN VISOR
6 X 30 DRIVER'S WINDOW VISOR
DRIVERS OVERHEAD STORAGE COMPARTMENT
OVERHEAD LATCHING COMPARTMENT IN FRONT BULKHEAD
ROSCO OPEN VIEW REAR VIEW MIRRORS –REMOTE POWERED
ROSCO MINI HAWKEYE CROSS VIEW MIRRORS
ALL EXTERIOR MIRRORS HEATED
REFLECTORS AS REQUIRED 3M
ELECTRIC STOP ARM – REFLETIVE W / LED STROBE LIGHTS
ELECTRIC POLY CROSSING ARM W / INTERRUPT SWITCH
WET ARM WASHER SYSTEM-6 QT. CAP W/SINGLE SWITCH
ILLINOIS CERTIFICATION LABEL & REQUIRED DECALS
SAFETY EQUIPMENT, FAK - FIRE EXTINGUISHER & TRIANGLES
BODY FLUID CLEAN UP KIT
STAINLESS STEEL SCREWS FOR EXTERIOR LIGHTS
PRE WIRE FOR 2-WAY AND VIDEO
REAR RUBBER FENDERS
LINED STEPWELL FOR ADDITIONAL INSULATION