

Minutes of the Special School Board Meeting

Of the School Board of Independent School District No. 709 held at the Historic Old Central High School, 215 North First Avenue East, Duluth, Minnesota 55802, on

Tuesday, November 25, 2014

Members Present

Annie Harala (arrived at 4:32)
Art Johnston
Rosie Loeffler-Kemp
Mike Miernicki
Judy Seliga Punyko
Harry Welty

Others Present

Bill Gronseth, Superintendent
Bill Hanson, Deputy Clerk
Sue Talerico, Secretary

Members Absent

Bill Westholm

- Chair Miernicki called the special school board meeting of November 25, 2014 to order at 4:30 p.m.

Member Seliga-Punyko presented the resolution:

RESOLUTION **Executive (Closed) Session**

WHEREAS, Pursuant to Minnesota Statute 13D.05 Subd. 3.(c) allowing a closed meeting for discussion related to the purchase or sale of real property.

WHEREAS, Pursuant to Minnesota Statutes section 13D.03 subdivision 1.(b) allowing a closed meeting for discussion and review of labor negotiation proposals.

RESOLVED, By the School Board of Independent School District 709, St. Louis County, Minnesota, that the School Board shall meet in Executive (Closed) Session on Tuesday, November 25, 2014, at approximately 4:30 p.m. in the Board Conference Room of the Historic Old Central High School for the purpose of:

- A. Updates related to the status of property disposals as listed on attachment; and,
- B. Updates related to pending labor negotiations with the remaining nine bargaining units:
 - Duluth District-Wide Instructional Administrators' Association
 - Duluth Principals Association
 - Education Directors Association
 - Education Minnesota Duluth Clerical Local 692-A
 - Executive Employees Association
 - Food Service Employees – AFSCME Council 5
 - National Conference of Firemen and Oilers, Local 32BJ, Chapter 956 (Maintenance Unit)
 - Non-Certified Business Division Administrators' Association
 - Paraprofessionals

B/HR-11-14-3212

November 25, 2014

M- Seliga-Punyko, S- Loeffler-Kemp, to approve Resolution B/HR-11-14-3212 - Executive Closed Session. Upon a vote the same passed – 5-0.

Recess at: 4:31 p.m.

Reconvene at: 6:00 p.m.

Member Harala presented the Resolution:

RESOLUTION

Authorizing the Sale of the Central High School Property Located at 800 East Central Entrance

WHEREAS, the School Board by Resolution B-6-07-2452 adopted a Long-range Facilities Plan for the District, and therein also directed the District's administrative staff to commence with the disposition of certain non-school sites including the Central High School property; and

WHEREAS, said property will no longer be used for purposes set forth in Minnesota Statute Section 123B.51.

NOW, THEREFORE, BE IT RESOLVED, the School Board authorizes the sale of real property located at 800 East Central Entrance legally described and depicted on Exhibit A attached hereto, City of Duluth, in St. Louis County; and,

BE IT FURTHER RESOLVED that the School Board authorizes the School Board Chair to execute a purchase agreement consistent with the terms considered by the board in Executive Closed Session on November 25, 2014, and to sign all other documents required for closing this sale transaction.

[See Exhibit A on following pages]

Central High School Parcels

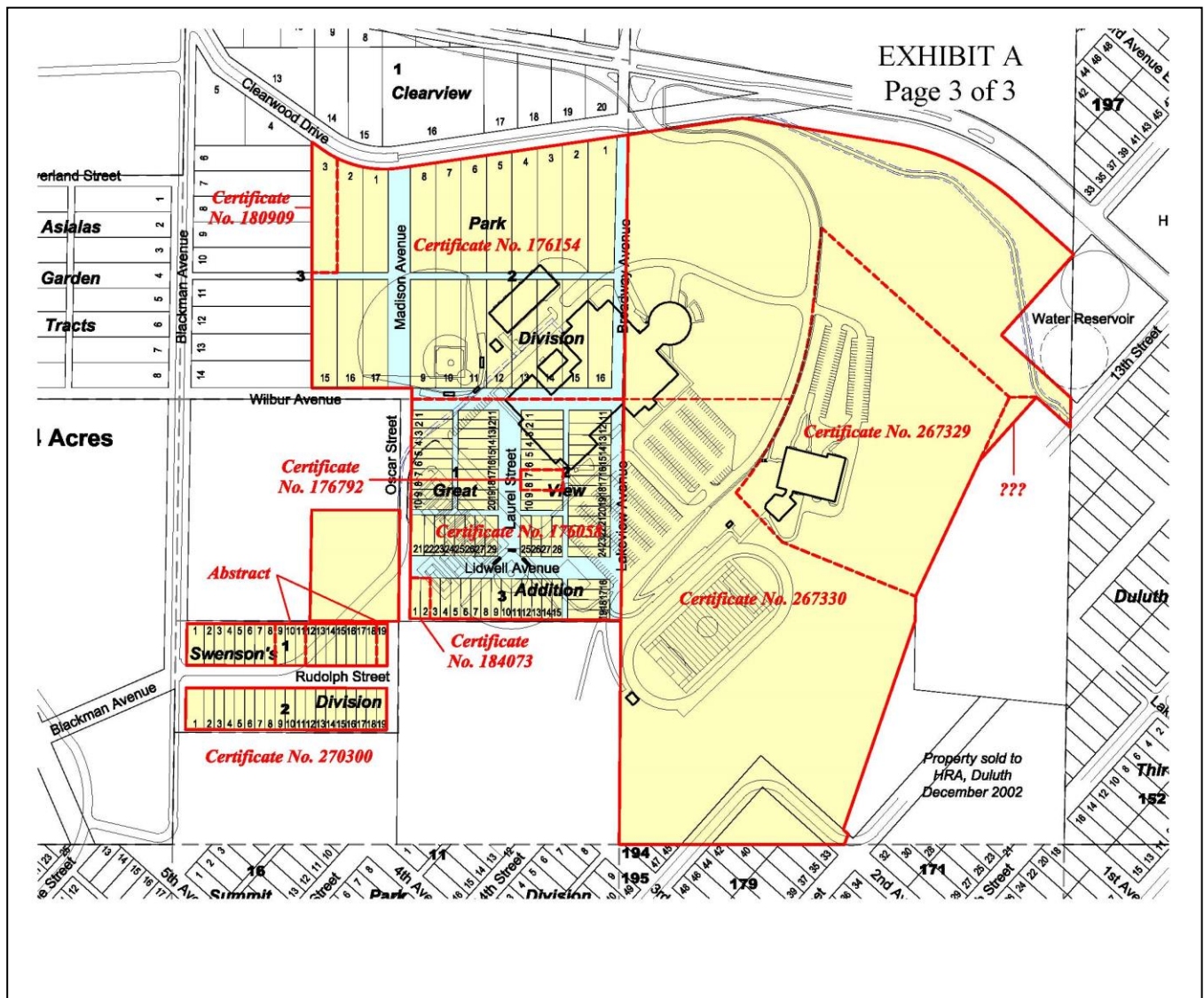
Exhibit A
Page 1 of 3

deed	division/description	blk	lot	parcel code	acres	lot size
Certificate No. 267330 (1995)	NE 1/2 of SE 1/4 Lying South of...			010-2710-06120	19.19	
	SE 1/4 of SE 1/4 Except... (Field)			010-2710-06200	14.27	
Certificate No. 267329 (1995)	E 1/2 of SE 1/4 Commencing at... (STC)			010-2710-06203	10.50	
	Part of SE 1/4 of SE 1/4 Commencing at...			010-2710-06206	0.14	
Certificate No. 176154 (1967)	Clearview Park Division	2	1	010-0550-00230	0.87	92x410
	Clearview Park Division	2	2	010-0550-00240	0.68	75x395
	Clearview Park Division	2	3	010-0550-00250	0.67	75x388
	Clearview Park Division	2	4	010-0550-00260	0.65	75x377
	Clearview Park Division	2	5	010-0550-00270	0.63	75x366
	Clearview Park Division	2	6	010-0550-00280	0.61	75x355
	Clearview Park Division	2	7	010-0550-00290	0.59	75x345
	Clearview Park Division	2	8	010-0550-00300	0.58	75x334
	Clearview Park Division	2	9	010-0550-00310	0.57	75x330
	Clearview Park Division	2	10	010-0550-00320	0.57	75x330
	Clearview Park Division	2	11	010-0550-00330	0.57	75x330
	Clearview Park Division	2	12	010-0550-00340	0.57	75x330
	Clearview Park Division	2	13	010-0550-00350	0.57	75x330
	Clearview Park Division	2	14	010-0550-00360	0.57	75x330
	Clearview Park Division	2	15	010-0550-00370	0.57	75x330
	Clearview Park Division	2	16	010-0550-00380	0.64	85x330
	Clearview Park Division	3	1	010-0550-00390	0.78	108x315
	Clearview Park Division	3	2	010-0550-00400	0.55	75x321
Certificate No. 180909 (1969)	Clearview Park Division	3	3	010-0550-00410	0.60	75x347
	Clearview Park Division	3	15	010-0550-00530	0.55	75x320
Certificate No. 176154 (1967)	Clearview Park Division	3	16	010-0550-00540	0.55	75x320
	Clearview Park Division	3	17	010-0550-00550	0.55	75x320
Certificate No. 176058 (1967)	Great View Addition to Duluth	1	1	010-1990-00010	0.10	30x145
	Great View Addition to Duluth	1	2	010-1990-00020	0.09	30x128
	Great View Addition to Duluth	1	3	010-1990-00030	0.09	30x128
	Great View Addition to Duluth	1	4	010-1990-00040	0.09	30x128
	Great View Addition to Duluth	1	5	010-1990-00050	0.09	30x128
	Great View Addition to Duluth	1	6	010-1990-00060	0.09	30x128
	Great View Addition to Duluth	1	7	010-1990-00070	0.09	30x128
	Great View Addition to Duluth	1	8	010-1990-00080	0.09	30x128
	Great View Addition to Duluth	1	9	010-1990-00090	0.09	30x128
	Great View Addition to Duluth	1	10	010-1990-00100	0.09	30x128
	Great View Addition to Duluth	1	11	010-1990-00110	0.10	30x145
	Great View Addition to Duluth	1	12	010-1990-00120	0.10	30x145
	Great View Addition to Duluth	1	13	010-1990-00130	0.10	30x145
	Great View Addition to Duluth	1	14	010-1990-00140	0.10	30x145
	Great View Addition to Duluth	1	15	010-1990-00150	0.10	30x145
	Great View Addition to Duluth	1	16	010-1990-00160	0.10	30x145
	Great View Addition to Duluth	1	17	010-1990-00170	0.10	30x145
	Great View Addition to Duluth	1	18	010-1990-00180	0.10	30x145
	Great View Addition to Duluth	1	19	010-1990-00190	0.10	30x145
	Great View Addition to Duluth	1	20	010-1990-00200	0.10	30x145
	Great View Addition to Duluth	1	21	010-1990-00210	0.11	38x161
	Great View Addition to Duluth	1	22	010-1990-00220	0.11	30x161
	Great View Addition to Duluth	1	23	010-1990-00230	0.11	30x161
	Great View Addition to Duluth	1	24	010-1990-00240	0.11	30x161
	Great View Addition to Duluth	1	25	010-1990-00250	0.11	30x161
	Great View Addition to Duluth	1	26	010-1990-00260	0.11	30x161
	Great View Addition to Duluth	1	27	010-1990-00270	0.11	30x161
	Great View Addition to Duluth	1	28	010-1990-00280	0.11	30x161
	Great View Addition to Duluth	2	1	010-1990-00290	0.12	30x176
	Great View Addition to Duluth	2	2	010-1990-00300	0.12	30x176

Central High School Parcels

Exhibit A
Page 2 of 3

deed	division/discription	blk	lot	parcel code	acres	lot size
	Great View Addition to Duluth	2	3	010-1990-00310	0.12	30x176
	Great View Addition to Duluth	2	4	010-1990-00320	0.12	30x176
	Great View Addition to Duluth	2	5	010-1990-00330	0.12	30x176
	Great View Addition to Duluth	2	6	010-1990-00340	0.12	30x176
Certificate No. 176792 (1967)	Great View Addition to Duluth	2	7	010-1990-00350	0.12	30x176
	Great View Addition to Duluth	2	8	010-1990-00360	0.12	30x176
Certificate No. 176058 (1967)	Great View Addition to Duluth	2	9	010-1990-00370	0.12	30x176
	Great View Addition to Duluth	2	10	010-1990-00380	0.12	30x176
	Great View Addition to Duluth	2	11	010-1990-00390	0.12	30x176
	Great View Addition to Duluth	2	12	010-1990-00400	0.12	30x176
	Great View Addition to Duluth	2	13	010-1990-00410	0.12	30x176
	Great View Addition to Duluth	2	14	010-1990-00420	0.12	30x176
	Great View Addition to Duluth	2	15	010-1990-00430	0.12	30x176
	Great View Addition to Duluth	2	16	010-1990-00440	0.12	30x176
	Great View Addition to Duluth	2	17	010-1990-00450	0.12	30x176
	Great View Addition to Duluth	2	18	010-1990-00460	0.12	30x176
	Great View Addition to Duluth	2	19	010-1990-00470	0.12	30x176
	Great View Addition to Duluth	2	20	010-1990-00480	0.12	30x176
	Great View Addition to Duluth	2	21	010-1990-00490	0.12	30x176
	Great View Addition to Duluth	2	22	010-1990-00500	0.12	30x176
	Great View Addition to Duluth	2	23	010-1990-00510	0.12	30x176
	Great View Addition to Duluth	2	24	010-1990-00520	0.12	30x176
	Great View Addition to Duluth	2	25	010-1990-00530	0.26	71x161
	Great View Addition to Duluth	2	26	010-1990-00540	0.11	30x161
	Great View Addition to Duluth	2	27	010-1990-00550	0.11	30x161
	Great View Addition to Duluth	2	28	010-1990-00560	0.11	30x161
Certificate No. 184073 (1970)	Great View Addition to Duluth	3	1	010-1990-00570	0.11	30x153
	Great View Addition to Duluth	3	2	010-1990-00580	0.11	30x153
Certificate No. 176058 (1967)	Great View Addition to Duluth	3	3	010-1990-00590	0.11	30x153
	Great View Addition to Duluth	3	4	010-1990-00600	0.11	30x153
	Great View Addition to Duluth	3	5	010-1990-00610	0.11	30x153
	Great View Addition to Duluth	3	6	010-1990-00620	0.11	30x153
	Great View Addition to Duluth	3	7	010-1990-00630	0.11	30x153
	Great View Addition to Duluth	3	8	010-1990-00640	0.11	30x153
	Great View Addition to Duluth	3	9	010-1990-00650	0.11	30x153
	Great View Addition to Duluth	3	10	010-1990-00660	0.11	30x153
	Great View Addition to Duluth	3	11	010-1990-00670	0.11	30x153
	Great View Addition to Duluth	3	12	010-1990-00680	0.11	30x153
	Great View Addition to Duluth	3	13	010-1990-00690	0.11	30x153
	Great View Addition to Duluth	3	14	010-1990-00700	0.11	30x153
	Great View Addition to Duluth	3	15	010-1990-00710	0.11	30x153
	Great View Addition to Duluth	3	16	010-1990-00720	0.27	71x166
	Great View Addition to Duluth	3	17	010-1990-00730	0.11	30x166
	Great View Addition to Duluth	3	18	010-1990-00740	0.11	30x166
	Great View Addition to Duluth	3	19	010-1990-00750	0.11	30x166
Certificate No. 270300 (1996)	Swenson's Division of Duluth (lots 1-8, 12-18)	Block 1		010-4310-00010	1.68	
Abstract of Title	Swenson's Division of Duluth (lots 9-11, 19)	Block 1				
Certificate No. 270300 (1996)	Swenson's Division of Duluth	Block 2			1.68	
	S 1/2 of NW 1/4 of SW 1/4 of SE 1/4, except...			1.96		



B-11-14-3213

November 25, 2014

M-Harala, S-Welty, to approve Resolution B-11-14-3213 – Authorizing the Sale of the Central High School Property. Upon a vote, the same was approved – 6-0

- Chair Miernicki adjourned the Special School Board meeting of November 25, 2014 at 6:02 p.m.