

Schematic Design Presentation Public Safety Training Center // Collin College



ACKNOWLEDGEMENT

The PBK Team wishes to express our sincere appreciation to the Board of Trustees and Collin College Administration and Staff for allowing our firm the opportunity to be involved in the design of the Public Safety Training Center.

We also extend our utmost gratitude to the individuals who have attended numerous meetings and provided vital information during the design process. Their input and assistance has been most valuable to the success of this very important project.

Board of Trustees

Dr. J. Robert Collins	Chair
Stacy Anne Arias	Vice Chair
Andrew Hardin	Secretary
Nancy Wurzman	Treasurer
Mac Hendricks	Trustee
Jenny McCall	Trustee
Jim Orr	Trustee
Adrian Rodriguez	Trustee
Larry Wainwright	Trustee

Administration

Dr. Neil Matkin	District President
Dr. Brenda Kihl	Executive Vice President
Ken Lynn, C.P.A.	Acting VP of Administrative Services / CFO
Dr. Sherry Schumann	Senior VP for Academic, Workforce and Enrollment
Dr. Jon Hardesty	VP / Provost of Central Park Campus

Campus Design Review

Ed Leathers	Exec. Dir. Safety, Security, Facilities & Const.
Pat McAuliff	Director Fire Science and EMS
Todd Eubanks	Director Law Enforcement

ARCHITECTURAL
DRAWINGS & IMAGES





Questions:
 What is the cost of filtration of water so it can be re-used for fire training activities versus the cost of purchasing water from the city?

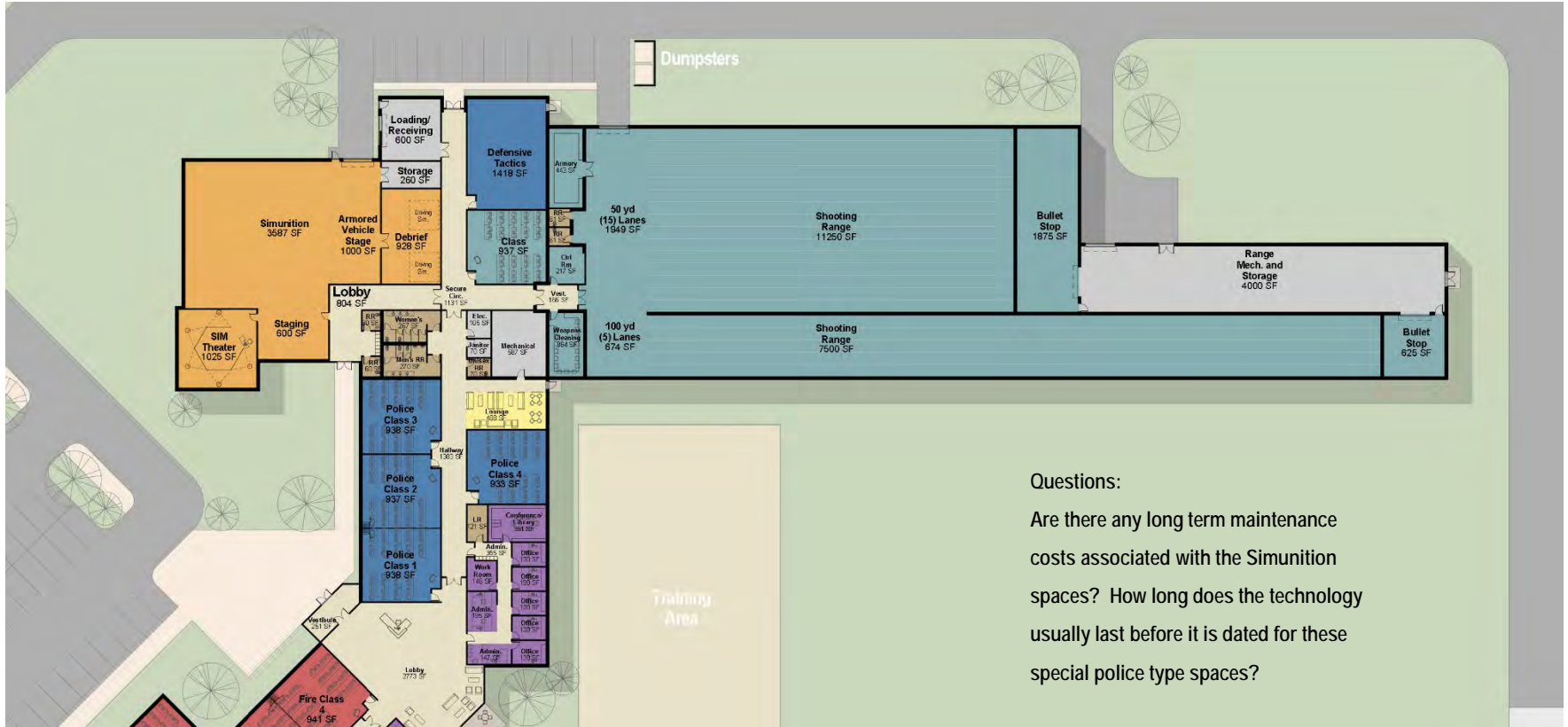
Do firemen require CDL's? Could the space as designed be used for CDL training?



Main Building Floor Plan



Main Building Floor Plan - Fire



Questions:

Are there any long term maintenance costs associated with the Simuition spaces? How long does the technology usually last before it is dated for these special police type spaces?





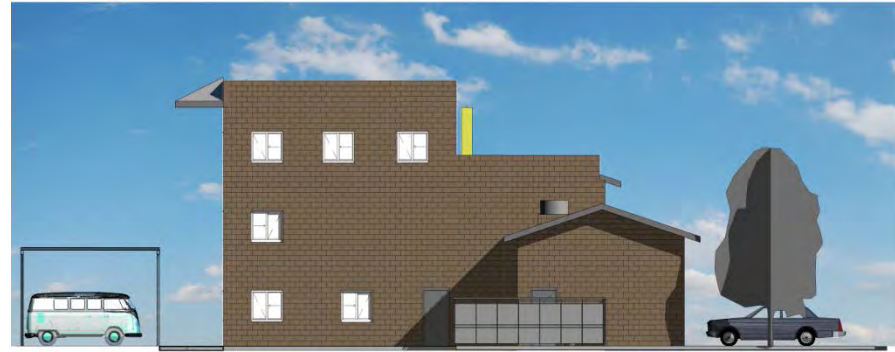




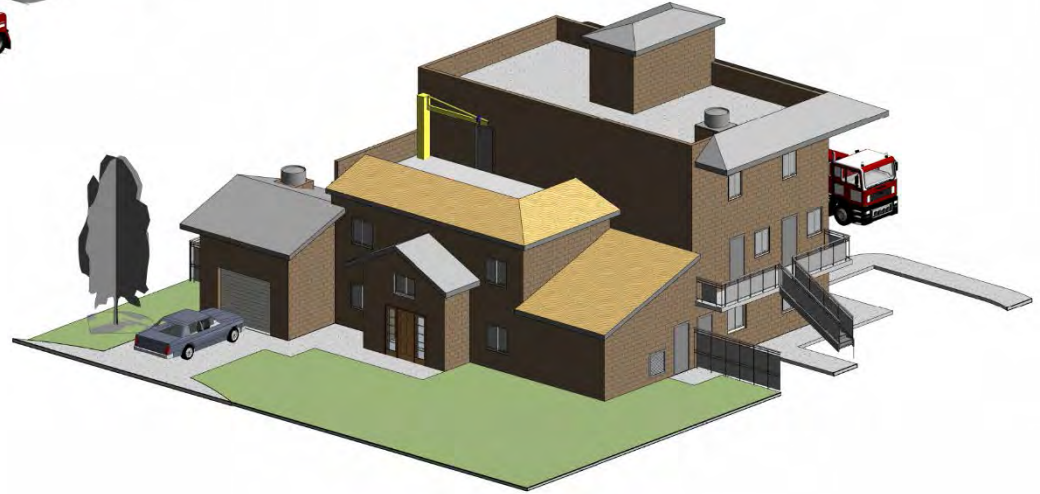
Mercantile / Tower Elevations



Mercantile / Tower Isometric Views



Apartment / House Elevations



Apartment / House Isometric Views



Outdoor Classroom Elevations

PROJECT SCHEDULE

SCHEMATIC DESIGN PHASE**SEPTEMBER 21– JANUARY 26, 2016**

Board Approval of Construction Manager.....October 27, 2015

Present Schematic Design to Board of TrusteesJanuary 26, 2016

DESIGN DEVELOPMENT PHASE**JANUARY 27– MARCH 22, 2016**

Present Design Development to Board of Trustees.....March 22, 2016

CONSTRUCTION DOCUMENTS PHASE**MARCH 23– JULY 31, 2016**

GMP Board Approval.....July 26, 2016

100% Construction Documents.....July 31, 2016

BIDDING PHASE**AUGUST 2- SEPTEMBER 2, 2016****CONSTRUCTION PHASE****SEPTEMBER 15, 2016 – NOVEMBER 1, 2018**

Substantial Completion DateNovember 1, 2017

Collin College Move-in Complete.....January 1, 2018

QUESTIONS?

THANK YOU
