



# UTPB STEM Academy

1882 Partnership Proposal

December 7, 2021

# Meet Our Team



**Shannon Davidson**  
*Superintendent,  
UTPB STEM Academy*



**Kathleen Halford**  
*Business Manager,  
UTPB STEM Academy*



**Candice Sikes**  
*Instructional Coach,  
UTPB STEM Academy*



**Lucinda Hurlbut**  
*Special Populations Coordinator,  
UTPB STEM Academy*



**Dr. Sandra Woodley**  
*President,  
University of Texas Permian Basin*



**Dr. Nichole Prescott**  
*Assistant Vice Chancellor of Academic Affairs,  
The University of Texas System*



**Irene Perry**  
*UTPB STEM Academy Board President,  
University of Texas Permian Basin*

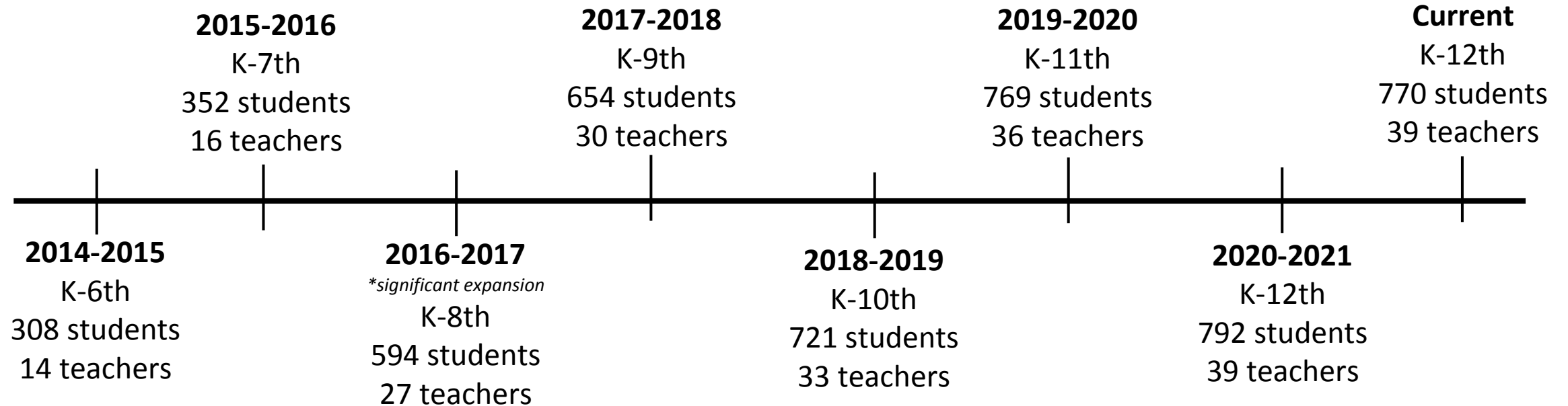


# Mission Statement

The UTPB STEM Academy prepares students to be STEM college and career ready, with a shared focus on collaboration, creativity, communication, and critical thinking.



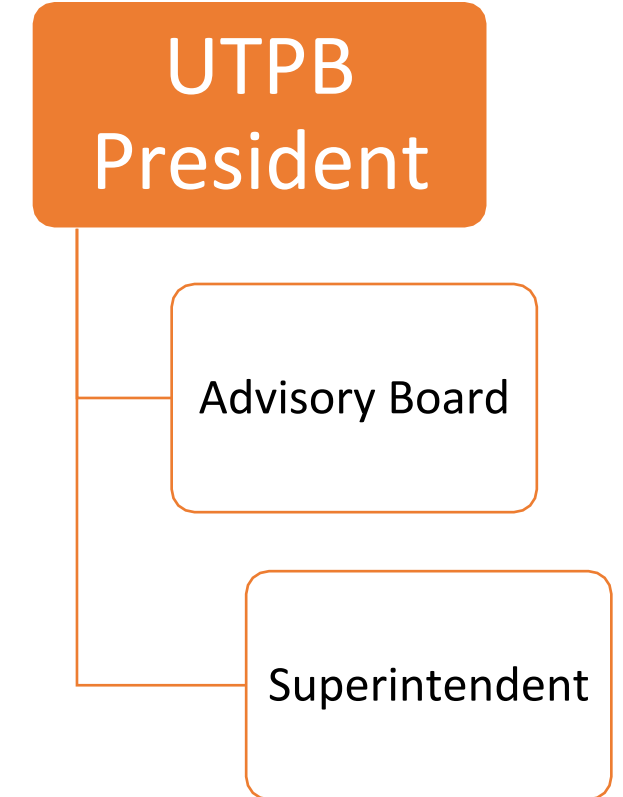
# Student Enrollment History





# Organizational Structure

- Approved TEA Sub Chapter D University Charter
- Charter is delegated to the President of UTPB
- President of UTPB delegates signing authority to the Advisory Board. Advisory Board who are appointed by President of UTPB, with the exception of 2 elected parent positions.
  - 7 member board
    - 2 UTPB Faculty members of College of Arts and Science
    - 2 UTPB Faculty members from the College of Education
    - 1 UTPB General Education Faculty
    - 2 Parent Board Members
- Superintendent is appointed by the President of UTPB



# Admission and Enrollment

- Application Period
  - March 1 to April 15
- Lottery
  - Takes place end of April
- Geographical Boundaries
  - Students from Ector and Midland Counties
- Charter is approved for up to 3,900 students

Admission Process



# Schedule

- Calendar = 180 days
- Monday-Thursday 7:50am – 2:15pm
- Friday 7:50am-12:00pm
- Shortened School Days Allow For:
  - Continued student learning at home
  - After school tutoring and interventions
  - Professional development
  - Student enrichment

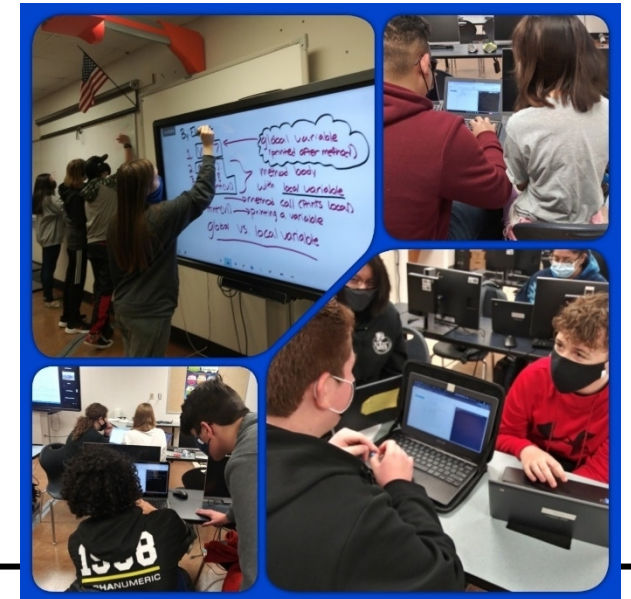
UTPB STEM Academy  
2021 - 2022 School Calendar

August 2021	September 2021	October 2021
Sa M Tu W Th F S 1 2 3 4 5 6 7 8 9 10 11 12 13 14 15 16 17 18 19 20 21 22 23 24 25 26 27 28 29 30 31	Sa M Tu W Th F S 1 2 3 4 5 6 7 8 9 10 11 12 13 14 15 16 17 18 19 20 21 22 23 24 25 26 27 28 29 30	Sa M Tu W Th F S 1 2 3 4 5 6 7 8 9 10 11 12 13 14 15 16 17 18 19 20 21 22 23 24 25 26 27 28 29 30 31
Aug 10: Professional Development Aug 10: First Day of School	Sep 6: School Closes/Monday	Oct 11: School Closes/Monday
November 2021	December 2021	January 2022
Sa M Tu W Th F S 1 2 3 4 5 6 7 8 9 10 11 12 13 14 15 16 17 18 19 20 21 22 23 24 25 26 27 28 29 30	Sa M Tu W Th F S 1 2 3 4 5 6 7 8 9 10 11 12 13 14 15 16 17 18 19 20 21 22 23 24 25 26 27 28 29 30 31	Sa M Tu W Th F S 1 2 3 4 5 6 7 8 9 10 11 12 13 14 15 16 17 18 19 20 21 22 23 24 25 26 27 28 29 30 31
Nov 20: School Closes/Monday	Dec 17-18: School Closes/Monday	Jan 1: School Closes/Teacher Professional Development Day Jan 17: School Closes/Monday
February 2022	March 2022	April 2022
Sa M Tu W Th F S 1 2 3 4 5 6 7 8 9 10 11 12 13 14 15 16 17 18 19 20 21 22 23 24 25 26 27 28	Sa M Tu W Th F S 1 2 3 4 5 6 7 8 9 10 11 12 13 14 15 16 17 18 19 20 21 22 23 24 25 26 27 28 29 30 31	Sa M Tu W Th F S 1 2 3 4 5 6 7 8 9 10 11 12 13 14 15 16 17 18 19 20 21 22 23 24 25 26 27 28 29 30 31
Feb 01: Bad Weather Day	Mar 14-15: School Closes/Monday	Apr 1: School Closes/Teacher Professional Development Day Apr 18: Bad Weather Day
May 2022	Schedule:	
Sa M Tu W Th F S 1 2 3 4 5 6 7 8 9 10 11 12 13 14 15 16 17 18 19 20 21 22 23 24 25 26 27 28 29 30 31	Mon-Thurs 7:50a-2:15p Fri 7:50a-12:00p  Total school days = 180 Total teacher days = 187	
May 04: Last Day of School May 07: Teacher Return Day		



# Academic Model

- Texas Essential Knowledge and Skills
- Project Based Learning
- STEM Based Learning
  - Pathways
    - Biomedical
    - Engineering
    - Computer Programming





# What is Project Based Learning

The STEM Academy's Project Based Learning model includes the following progression:

1. Entry Event
2. Driving Question
3. Need to Knows
4. Student Voice and Choice
5. Research and Sustained Inquiry
6. Student Critique and Revision
7. Culminating Event



# PBL Examples

10

## Boat Races





# Post Secondary Focus

- Post Secondary Ready
  - Distinguished Level of Achievement
  - College Career Military Ready (CCMR)
- Partner with UTPB Admissions Office
- Dual Credit with UTPB
  - Course fees paid by UTPB STEM
  - Focus on Texas Core 42



# Parent Partnerships

- Parent/School partnerships are the backbone of student success.
- Family Engagement Activities
  - Social Events
  - Culminating Events of Projects



# Financial Plan

- 2021-2022 Approved Budget - \$6.3 million
- Revenue Sources:
  - ADA Funding
  - Grants: Title I, II, IV, IDEA B, ESSER
- Current Fund Balance - \$5 million

**THE UNIVERSITY OF TEXAS OF THE PERMIAN BASIN  
STEM ACADEMY**

*SCHEDULE OF FINDINGS AND QUESTIONED COSTS*  
For the Year Ended August 31, 2020

**A. SUMMARY OF AUDIT RESULTS**

1. The auditors' report expresses an unmodified opinion on the financial statements of The University of Texas of the Permian Basin STEM Academy.
2. Significant deficiencies in internal control were not disclosed by the audit of the basic financial statements.
3. No instances of noncompliance material to the financial statements were disclosed during the audit.

**B. FINDINGS – BASIC FINANCIAL STATEMENT AUDIT**

*None Noted*

**C. FINDINGS – FEDERAL AWARDS**

*None Noted*



# Partnership Benefits

## Benefits to UTPB STEM Academy:

- Students:
  - athletics
  - fine arts
- Facilities
- Counseling Services
- Transportation
- Food Services



# Partnership Benefits

## **Benefits to Ector County ISD:**

- Additional Choice Option for ECISD Families
- Future Middle School Option
- Collaborative Partnership with Shared Resources
- Creates Sense of Post-Secondary Belief/Hope



# Thank you!

