

TRANSPORTATION MANAGEMENT
STUDENT TRANSPORTATION

CNA
(LOCAL)

**Hazardous Traffic
Conditions and
High-Risk Areas**

If the District applies for the additional transportation allotment provided by the state for students who live within two miles of a school campus, the Board shall adopt a resolution to identify hazardous traffic conditions or areas presenting a high risk of violence within two miles of the school campus. The resolution shall include the specific hazardous or high-risk areas in which transportation shall be provided, and the District shall publish the locations of these routes. The Board shall adopt a revised resolution when necessary to accurately reflect changes to the conditions or areas.

Resolution of the Board Regarding Hazardous Traffic Conditions And School Bus Routes

WHEREAS, Education Code 42.155(d) allows the Board of Trustees of Ferris Independent School District to obtain supplemental state funding for transporting regular, otherwise ineligible students who live within two miles of their school but who would be subject to hazardous traffic conditions if they walked to school;

WHEREAS, the Texas Education Agency handbook on School Transportation Allotments requires the Board to adopt language providing the definition of hazardous traffic conditions applicable to the District and identifying the specific hazardous areas for which such funding is requested; and

WHEREAS, the Board acknowledges Education Code 42.155(d) provisions, stating that a hazardous condition exists where no walkway is provided and children must walk along or cross a freeway or expressway, an underpass, an overpass or a bridge, an uncontrolled major traffic artery, an industrial or commercial area, or another comparable condition;

NOW, THEREFORE, BE IT RESOLVED that the Board of Trustees of Ferris Independent School District has determined that a hazardous condition exists because there is no walkway where students must walk along or cross:

The blocks bounded by, 200 block of FM 983 to 500 block FM 983, 600 block of FM 664 to 100 block FM 664, 100 block of North Central Street to 600 block North Central Street, 100 block of East 8th Street to 400 block East 8th Street, 100 block of 10th Street to 200 block of 10th Street, 800 block of North Birch Street to 800 Wolf Springs Road, 840 block of Wolf Springs Road to 1000 block of Wolf Springs Road, ***are areas that have no sidewalk for pedestrian traffic.***

The Board has also identified the following specific hazardous areas in which such conditions exist:

3. The blocks bounded by, 200 block of East 5th Street to the 700 block of East 5th Street, 800 block of North Birch Street to 800 block of Wolf Springs Road, 800 block of Wolf Springs Road to 1000 block of Wolf Springs Road, 1000 block of North I-45 Service Road, 300 block of North I-45 Service Road, 100 block of East 8th Street to 1000 Block of East 8th Street, 100 block of North Central Street to 600 block North Central Street, 100 block of 10th Street to 200 block of 10th Street, 200 block of FM 664 to 600 block of FM 664, 100 block of Jimmie Birdwell Boulevard to 200 block Jimmie Birdwell Boulevard, and 200 block of FM 983 to 500 block FM 983, are ***High Traffic Areas.***
4. The blocks bounded by, 200 block of FM 983 to 500 block FM 983, 600 block of FM 664 to 100 block FM 664, 100 block of North Central Street to 600 block North Central Street, 100 block of East 8th Street to 400 block East 8th Street, 100 block of 10th Street to 200 block of 10th Street, 800 block of North Birch Street to 800 Wolf Springs Road, 840 block of Wolf Springs Road to 1000 block of Wolf Springs Road, ***are areas that have no sidewalk for pedestrian traffic.***
5. The blocks bounded by, 200 block of East 5th Street to 700 block 5th Street (Sidewalk on the Southside of the street only), 800 block of Wolf Springs Road (Sidewalk on the Northside of the street only), ***are areas with partial sidewalks for pedestrian traffic.***

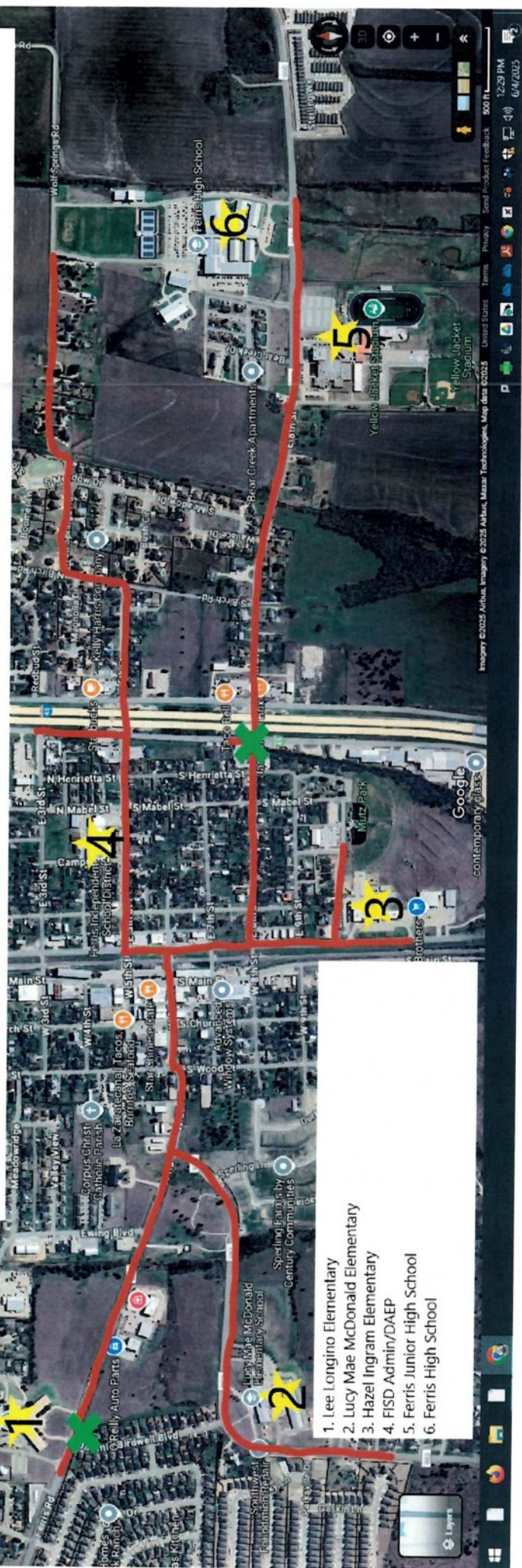
Adopted this ____(*date*) day of _____(*month*), ____(*year*), by the Board of Trustees.

Presiding officer's signature

Board Secretary's signature

DATE ISSUED: 9/27/2021
UPDATE64 CNA-RRM

Red Highlighted Areas are High Traffic Areas
 Yellow Star are locations of FISD Campuses
 Green X indicates areas of Pedestrian vs. Automobile Incidents (Injury and or Fatalities)



1. Lee Longino Elementary
2. Lucy Mae McDonald Elementary
3. Hazel Ingram Elementary
4. FISD Admin/DAEP
5. Farris Junior High School
6. Farris High School

Areas with No Sidewalks

Green Star are locations of FISD Campuses



1. Lee Longino Elementary
2. Lucy Mae McDonald Elementary
3. Hazel Ingram Elementary
4. FISD Admin/DAEP
5. Ferris Junior High School
6. Ferris High School