

Browning Public Schools
Board Agenda Request
Meeting To Be Held: 5/30/18



Recognition: Students Staff Parents
Information: Building Report Old Business Superintendent's Report
Action: Resignation Hiring Contract Service Agreements
 Travel Out-of-State Travel In State Approvals
 Termination Legal Matters Other:
 This action request pertains to Elementary (only) High School/District Wide

Date: 5/21/18

To: **Board of Trustees**
 Browning Public Schools

From: Corrina Guardipee-Hall
Title: Superintendent

Subject: **Out of State Travel-Staff Development for Educators (SDE) National Math Conference**

Description: Request travel for Jeri Matt, Brandy Bremner, Arlene Wippert, Sheila Hall, Edith Wagner, Lona Running Wolf, Victoria Guardipee, Samantha Grant, Jennifer Fenner, 1 BMS teacher, 1 BHS teacher and 1 KW/VC teacher to attend the (SDE) National Math Conference in Las Vegas, NV July 9 – July 14, 2018.

Financial Impact: \$ 42,909.04

Funding Source (Budget/grant, etc.): Title I School Wide 115.90.494.2213.582.118

Attachment(s): Travel Request/Agenda

Approval: Superintendent's Office/Finance/Personnel as applicable (Initial) _____

Comments: _____

Board Action: N/A (Info) Approved Denied Tabled to: _____

[I Teach PreK! I Teach K! I Teach 1st! I Teach 2nd! DI Differentiated Instruction Teaching Math]



REGISTER NOW, CREATE YOUR AGENDA ONLINE!

THE EDUCATOR CONFERENCE OF CHOICE

You choose your strand, days & sessions. We provide your learning experience.

[FEATURED STRAND]
 K-5
Teaching Math

SDE.COM/MATH-18

LEARN FROM THE EXPERTS



KIM SUTTON



JESSICA SHUMWAY



SHANNON SAMULSKI



ELIZA THOMAS



JANE FELLING

REACH YOUR STUDENTS WHERE THEY ARE



National Conference ²⁰¹⁸

LAS VEGAS • JULY 9–13, 2018



FOSTER JOYFUL LEARNING

I Teach PreK!

I Teach K!

I Teach 1st!

I Teach 2nd!

DI Differentiated Instruction

Teaching Math

JOYFUL LEARNING STARTS WITH YOU

Come to re-group, re-strategize, and rejuvenate. Leave ready to foster joyful learning.

REGISTER NOW, CREATE YOUR AGENDA ONLINE!



PERSONALIZE YOUR LEARNING PATH

THERE'S A STRAND FOR EVERYONE ON YOUR TEAM!

For five days this summer, get exclusive access to 100+ education experts sharing their research, practical strategies, and inspiration. You will return to your classroom more prepared (and more joyful!) than ever before to make a positive impact on student learning.

SDE.COM/MATH-18

MARQUEE EXPERTS & PRESENTERS

► BIOS & VIDEOS ONLINE!

OPENING KEYNOTE & SESSION



DR. BECKY BAILEY

- Developer of Conscious Discipline®
- Author of *Easy to Love, Difficult to Discipline*

FULL DAY OF SESSIONS



GAIL BOUSHEY & ALLISON BEHNE
FROM THE 2 SISTERS

- Supporting teachers & accelerating student learning through Daily 5 & CAFE

OPENING COMEDY EVENT



GERRY BROOKS

- Elementary principal
- Education humorist & social media star

CLOSING MUSICAL EVENT



CLINT PULVER

- Motivational speaker & energetic musician
- Professional drummer, actor & entrepreneur

The Educator Conference of
CHOICE
 [STRANDS] [SESSIONS] [EXPERTS] [DAYS] [PRE-CONS]



- 6 grade- & topic-focused strands
- 500+ practical & hands-on sessions
- 100+ experts, authors & practitioners
- 5 days of learning & inspiration
- 11 deep-dive pre-conference events

SDE.COM/MATH-18

BRING HOME THE BENEFITS

- Immerse yourself in five days of learning with a comprehensive session line-up dedicated to **reaching all students**.
- Identify opportunities for creating **student-centered environments of equity, access, and flexible thinking**.
- Gain purposeful approaches to **move from theory into practice** with new ideas, fresh concepts, and proven strategies to make **learning accessible and engaging** for all your students.
- Dig deeply into the **science of learning** and **acquire classroom-proven approaches** to help bolster student achievement.
- Discover how **social, emotional, and cognitive development** impact learning experiences.

PLUS!
 FREEBIE!
 CONTESTS
 GIVE-AWAY

EXPERIENCE THE FULL WEEK

MONDAY	TUESDAY	WEDNESDAY	THURSDAY	FRIDAY
Pre-Conference Events	Exhibit Hall & Bookstore VENDORS, FREEBIES, BOOTH BONANZA GIVE-AWAYS, FREE COFFEE & MUFFINS			Sessions
	OPENING KEYNOTE Dr. Becky Bailey	Sessions & Author Signings	Sessions & Author Signings	
EXHIBIT HALL OPENING Gerry Brooks	Sessions & Author Signings			Sessions & Author Signings

ADD A PRE-CONFERENCE

▶ FULL DESCRIPTIONS ONLINE!

Come a day early for an intensive learning opportunity to jump start your week.

LEADERSHIP & ADMINISTRATION \$389 PER PERSON	STUDENT-CENTERED INSTRUCTION \$199 PER PERSON	ENGAGEMENT & MANAGEMENT \$199 PER PERSON	MATHEMATICS \$199 PER PERSON
<p>ADMINISTRATOR SUMMIT (K-12) PRESENTERS: TODD WHITAKER, ELIZA THOMAS & GERRY BROOKS</p> <p>Current and aspiring school and district-level leaders are invited to attend this inspiring, practical, energetic, and humorous day. Todd takes you through some high-impact notions and action items that reflect what great principals really do differently. Eliza opens the day with an inspiring keynote designed to build and strengthen your leadership bones. Later on, she gets you thinking, talking, and sketching as she guides you through a mind-mapping strategy that is fun, flexible, and easy to share with teachers and students. In the middle of it all, Principal Gerry Brooks jump-starts your brain with his unique, sometimes silly, and hysterically realistic perspective on educator stress, building relationships, staff meetings, and more.</p> <p>(Includes lunch and post-event cocktail reception.)</p>	<p>DI FOR THE MIDDLE/HIGH Principles, Myth-Busters, & Lesson Design (6-12) PRESENTER: RICK WORMELI</p> <hr/> <p>DI FOR THE LITTLE GUY (K-1) PRESENTER: KIM ADSIT</p> <hr/> <p>PROJECT-BASED LEARNING Learn It! Live It! Love It! (K-5) PRESENTERS: LORI ELLIOTT & MATT HALPERN</p> <p><small>Pre-conference events require separate registration and tuition. To register for any pre-conference event, you must also register for the SDE 2018 National Conference. Free Principal offer and Early Bird discount do not apply to pre-conference events.</small></p>	<p>ENGAGE, EMPOWER, ACHIEVE! Strategies for Managing a Classroom Where Students Love to Learn (K-6) PRESENTER: DONNA WHYTE</p> <hr/> <p>TEACHING KIDS TO THRIVE Essential Skills for Success (PK-12) PRESENTERS: DR. DEBBIE SILVER & DEDRA STAFFORD</p> <hr/> <p>THE FIRST 30 DAYS (K or 1st or 2nd) PRESENTERS: LEANNA WOLKIS-GOLDSTEIN, CARA CARROLL, CHERYL DICK</p>	<p>GUIDED MATH GAME PLAN (K-2) PRESENTER: REAGAN TUNSTALL</p> <hr/> <p>TIME'S UP ON TIMED TESTS Easy Fact Fluency Strategies without the Tears (1-5) PRESENTER: KRISTIN HILTY</p> <hr/> <p style="background-color: #8d6e63; color: white; padding: 5px;">LEARNING ADVENTURE \$69 PER PERSON</p>  <p>Red Rock Canyon Tour (9am-1:30pm) Guided tour includes transportation & lunch. Space is limited.</p>

THE WHAT, HOW & WHY OF IMPACTFUL TEACHING

Your students' needs are diverse.
Gain strategies to reach them all.



FEATURED STRAND

K-5

Teaching Math

[SDE.COM/MATH-18](https://sde.com/math-18)



REACH YOUR STUDENTS WHERE THEY ARE

Regardless of your comfort level with math instruction, return to your classroom with the knowledge and strategies to create and nurture a numeracy-rich environment. Discover classroom-tested conceptual, instructional, and strategic approaches for making mathematical thinkers out of your students... and yourself!

FEATURED MATH PRESENTERS

[▶ FULL PRESENTER LIST ONLINE!](#)



KIM SUTTON

- Differentiating Math Instruction
- Fact Fluency



JESSICA SHUMWAY

- Math Equity & Access
- Visual Interventions



ELIZA THOMAS

- Individualized Math Instruction
- Math Centers



SHANNON SAMULSKI

- Math Tasks
- Math Coaching



JANE FELLING

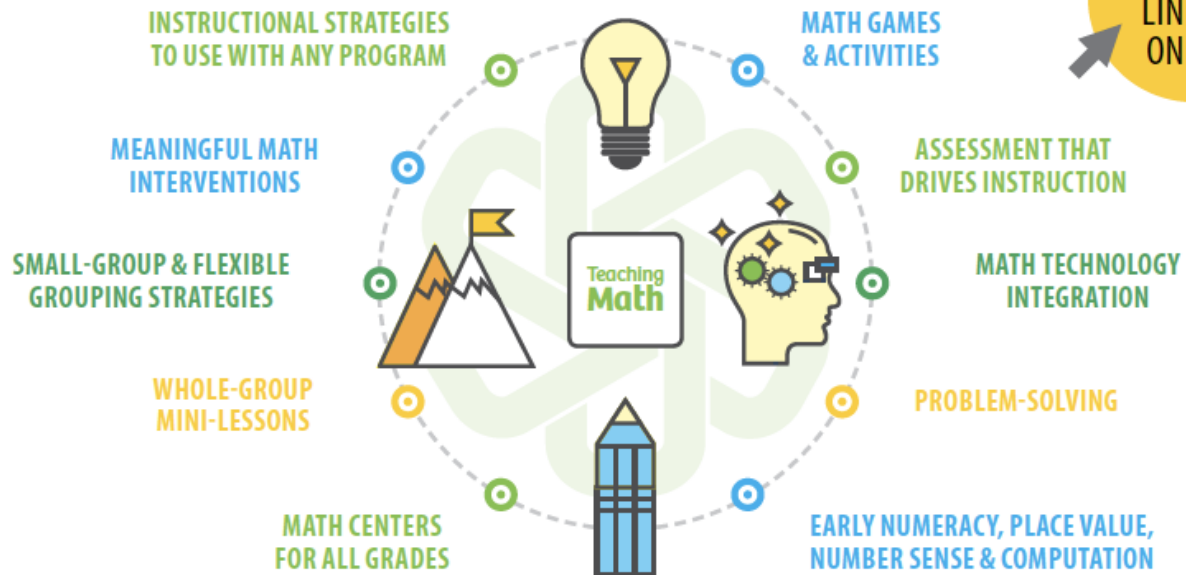
- Differentiating with Math Games
- Number Line Routines

🕒 CHOOSE FROM 65+ MATH SESSIONS BY 15+ MATH EXPERTS, AUTHORS & CLASSROOM PRACTITIONERS

MIX-&-MATCH SESSION TOPICS

We've designed our math strand around the topics you said you need.

We worked with our experts to hand-select the sessions that will address the needs of your diverse classroom. After you register, feel free to mix-&-match topics to customize your agenda online.



GAIN VALUABLE STRATEGIES & CONTENT

- Boost students' math skills through **individual**, **small-group**, and **whole-group** instruction.
- Meet students at their **math readiness level** with lessons that include **differentiation** and **intervention** strategies.
- Focus your math instruction and **increase achievement** with effective classroom and **behavior management** strategies.
- Discover new ideas and proven strategies to **make learning math accessible** and **engaging**.
- Build students' understanding with a **step-by-step approach** that connects the dots between **concrete**, **pictorial**, and **abstract** representations.
- Enjoy **hands-on math experiences** delivered by classroom teachers and math experts.

GET STARTED



The quality of the whole conference was top-notch. I definitely will be coming with some other teachers next year!"

— Sandra Denolf, California

The Educator Conference of
CHOICE

[SDE.COM/MATH-18](https://sde.com/math-18)

MAKE YOUR EXPERIENCE UNFORGETTABLE

Take full advantage of our 5-star location, our mobile app, earning credit, and some great extras.



SDE.COM/MATH-18

BOOK YOUR SUITE & RECHARGE IN STYLE

[▶ MORE DETAILS ONLINE!](#)

Save money with our hotel discount and save time getting to your sessions.

We've partnered with one of Las Vegas' premier luxury resorts, The Venetian | The Palazzo, to offer you the very best hospitality, dining, shopping, and entertainment Las Vegas has to offer.

LOOKING FOR MORE?
**DOWNLOAD
THE MOBILE
APP**



VISIT
SDE.COM/APP



THE VENETIAN* | THE PALAZZO*

3355 Las Vegas Blvd. South, Las Vegas, NV 89109
(888) 283-6423 • www.Venetian.com



Hotel discount codes:

RDVLP or RDVLPB (for a two-bed suite)

- ROH Suite*†
\$165 single/double, \$200 triple, \$235 quad
- Guaranteed Two-Bed Suite*
\$180 single/double, \$215 triple, \$250 quad



*Plus tax and a mandatory \$20/night resort fee based on single or double occupancy (additional \$20/night will be charged to triple or quad occupancy). All rates based on availability. Special pricing available through June 18, 2018.

†ROH ("Run of House"): Suite with one or two beds based on availability at check-in. Requests accepted but not guaranteed.

RECEIVE THESE EXTRAS

- Free online access to every session handout for one full year
- Free Wi-Fi access
- Free tote-bag at check-in
- Free morning coffee & muffins
- Free mobile event app with personalized agenda & networking
- Free principal with a group of 5+
- Special hotel discounts & deals



Funding Resources

Visit www.SDE.com/Math-18 for information and ideas about funding resources.



EARN CREDIT FOR ATTENDING

You may be eligible for professional development credit or CEUs through your state. University credit is available. Please check with your district for advance approval for state or graduate credit.

University credit available through Brandman University and Madonna University. Continuing education credits are not part of any degree program. The credits may be used for salary increment steps and recertification. For specific information on each university, visit SDE.com/About-SDE/Credit.

**BROWNING PUBLIC SCHOOLS
Leave Report/Travel Request**

Employee Name Sample Travel Request
Building admin

Employee # 10725
Substitute Name NA

LEAVE REPORT

<u>Date of Leave</u>	<u>Hours</u>	<u>Type of Leave</u>
<u>7/9-13/18</u>	<u>40</u>	<u>SR</u>
_____	_____	_____

Employee Signature _____ **Date** _____

Approved; Condition upon the specific leave being available for the specific employee **Not Approved**

Principal/Supervisor _____ **Date** _____

TYPE OF LEAVE

- | | | |
|--|------------------------------------|-------------------------------|
| AN Annual | PL Personal Leave | ALWO Approved Leave W/O Pay |
| SL Sick Leave | JD Jury Duty (attach verification) | ULWO Unapproved Leave w/o Pay |
| *EX/SR Extra-Curricular/School Related | NG National Guard | SWP Suspended w/Pay |
| | FN Funeral _____ | SWOP Suspended w/o Pay |
- (Master Contract Relationship)*

**If taking School Related/Extra-Curricular Leave only, In or Out of District, you MUST list Conference Name/Location*

TRAVEL REQUEST (If receiving payment for EX/SR leave please fill out entire form completely)

Conference/Workshop SDE National Math Conference **Attach Brochure/Agenda**

Location Las Vegas, NV

Departure Date 7/8/18

Return Date 7/14/18

Departure Time 11:00 am

Return Time 8:00 p.m.

Transportation: Personal Vehicle
 District Vehicle
 Professional Development

Mileage 254*.545/2. = 69.22
Per Diem 5 days OS+LD IS=567.00

Registration _____ PO# _____ = 1034.05
 Hotel _____ PO# _____ = 1344.48
 Other _____ PO# Airfare = 462.60
 Other _____ PO# Luggage = - 0 -

Sub Total \$3,477.35

Budget title I Schoolwide 115.90.494.2213.582.118 (70%) \$
(30%) \$

Check Total \$634.95

Employee Signature _____ **Date** _____

Principal/Supervisor _____ **Date** _____

Superintendent Signature _____ **Date** _____

