



**MEDFORD PUBLIC SCHOOLS**  
750 2ND AVENUE SE  
MEDFORD, MN 55049

**NOT FOR CONSTRUCTION**



401 2nd Avenue North, Suite 206  
Minneapolis, MN 55401  
www.wendelcompanies.com  
p:612.332.1401  
ARCHITECTURE • ENGINEERING • PLANNING  
ENERGY SERVICES • CONSTRUCTION MANAGEMENT

NOTE:  
THIS DOCUMENT AND THE IDEAS AND DESIGNS INCORPORATED HEREIN  
AS AN INSTRUMENT OF PROFESSIONAL SERVICE IS THE PROPERTY OF  
WENDEL SIGN ARCHITECTURE, INC. AND IS NOT TO BE USED IN WHOLE  
OR IN PART, FOR ANY OTHER PROJECT WITHOUT THE WRITTEN  
AUTHORIZATION OF WENDEL.

I hereby certify that this plan, specification, or report was  
prepared by me or under my direct supervision and that I am  
a duly Licensed Architect under the laws of the State of  
Minnesota.

Architect \_\_\_\_\_

Date \_\_\_\_\_ Reg. No. \_\_\_\_\_

NO.	BY	REVISIONS	DATE

DWG. TITLE

**PLANS**

DATE 4/18/2018

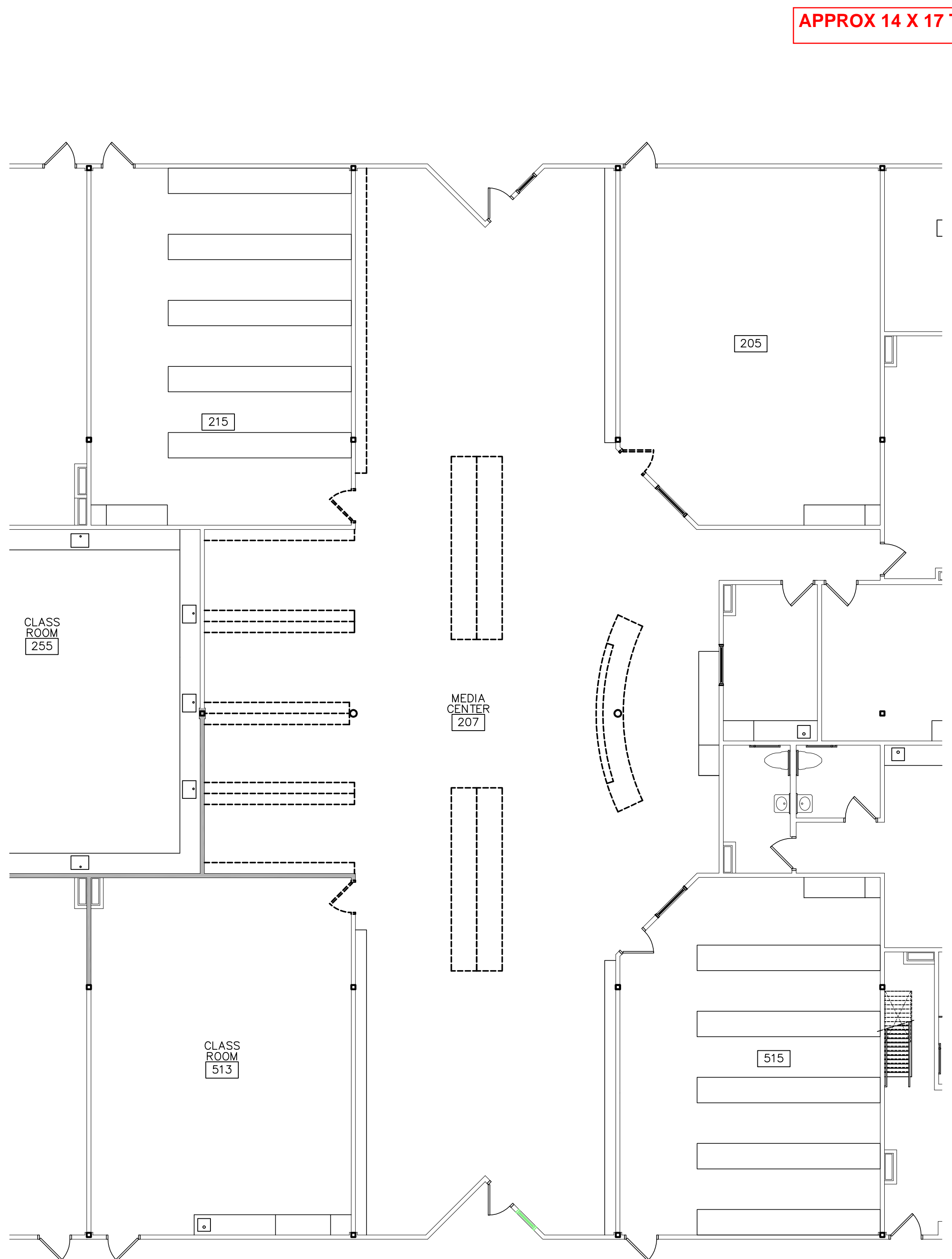
SCALE 1/8" = 1'-0"

DWN. JMML CHK. JAW

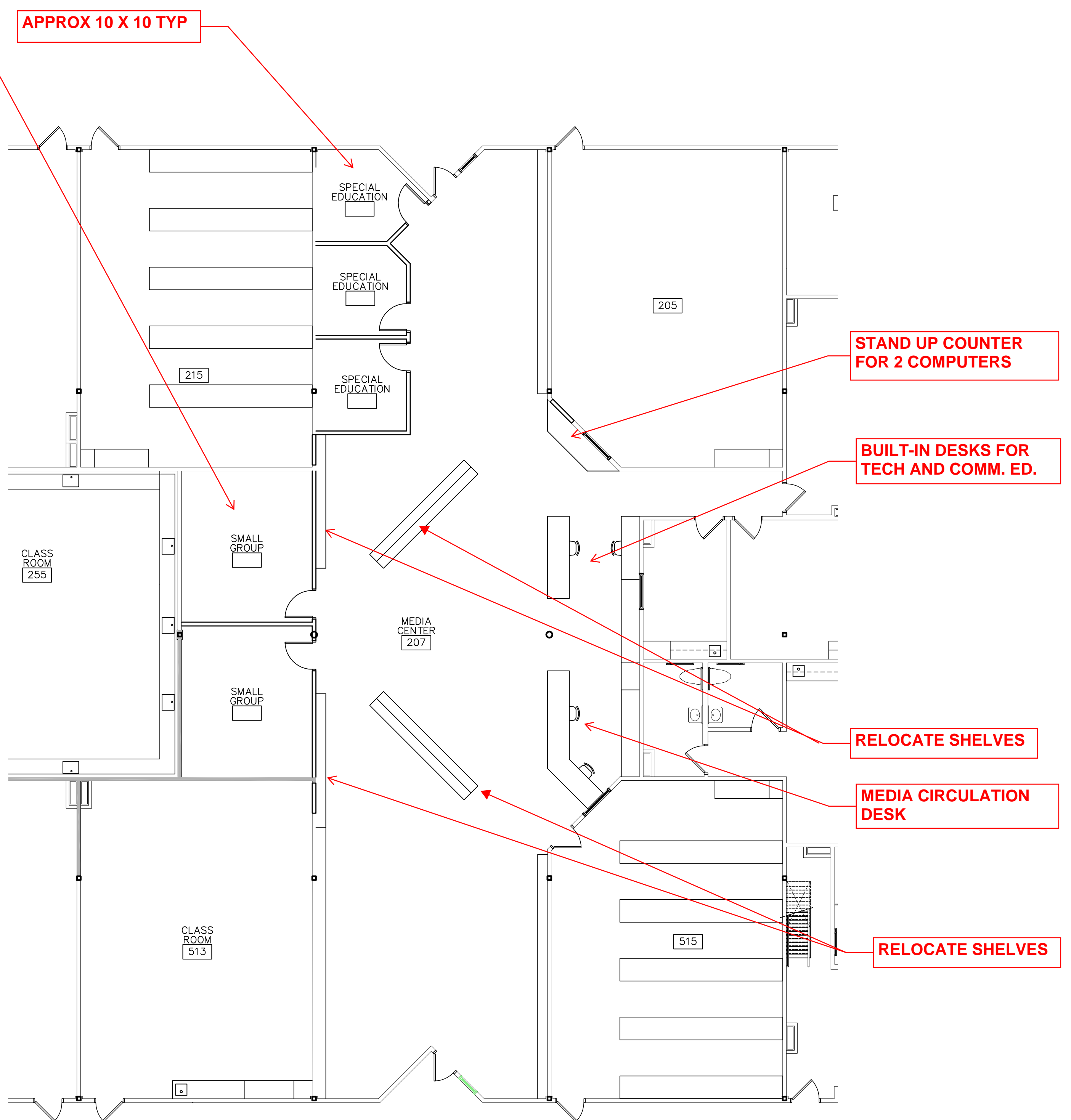
PROJ. No. \_\_\_\_\_

DWG. No. \_\_\_\_\_

**A101**



**1 DEMO PLAN**  
SCALE: 1/8" = 1'-0"



**1 FLOOR PLAN**  
SCALE: 1/8" = 1'-0"