



## NORTH SLOPE BOROUGH SCHOOL DISTRICT MEMORANDUM

**TO:** Robyn Burke, President  
Members of the Board

**THROUGH:** David Vadiveloo, Superintendent *Dsv*

**THROUGH:** Caitlin Santos, Director of Curriculum & Instruction *CS*

**FROM:** Ranel Gandia, Student Records Manager *RG*  
Ian Acuna, Data Manager *IA*

**DATE:** November 5, 2024

**SUBJECT:** Enrollment and Attendance Report

**Memo No. SB25-018**  
(Information Item)

### NSBSD Policy Manual:

BP 5111, Admission: The School Board believes that all children should have the opportunity to receive a free appropriate public education. Staff shall encourage parents/guardians to enroll all school-aged children in school.

BP 5112, Attendance and Exceptions: NSBSD is committed to the academic success of all students. Consistent attendance is the first step in assisting students to achieve academic success.

### NSBSD Strategic Plan Summary:

#### Culturally Responsive Instruction

Goal 2: All students perform at or above grade level

### Issue Summary:

Research consistently shows that student attendance matters. Students with higher attendance rates are more likely to meet state academic standards, and graduate on time at higher rates. Educational outcomes reflect attendance even in the earliest grades, and then those gaps continue to widen into secondary (grades 6-12). While some students are more adversely affected by absences than others, it is clear that the effects of absences accumulate over time; attendance matters and every day counts. This is not to say that perfect attendance should be the goal 'no matter what.' We understand that students may miss school for a variety of reasons, and do not want to encourage sick children to attend when it is not appropriate to do so. In light of these factors, and the overwhelming amount of research, the district has set the attendance goal for all students at 80%.

K-12 Enrollment by Site			
School	Current Student Count	Attendance Report	23-24 October Student Count
Nunamiut School	93	79.79% (↑ 0.54%)	92
Tikiġaq School	215	75.96% (↓ 3.88%)	243
Nuiqsut Trapper School	136	76.33% (↑ 8.65%)	146
Kali School	66	83.08% (↓ 2.16%)	81
Aġak School	125	77.48% (↑ 10.10%)	147



Harold Kaveolook School	58	87.06% (↑ 6.34%)	52
Meade River School	79	77.27% (↑ 1.14%)	77
Barrow High School	254	73.83% (↓ 0.66%)	264
Eben Hopson Middle School	212	77.47% (↓ 1.73%)	223
Fred Ipalook Elementary School	406	77.15% (↓ 2.08%)	437
KIITA Learning Community	41	64.10% (↓ 4.60%)	42
Total	1685	76.95% (↑ 0.22%)	1800

K3 & K4 Enrollment by Site			
School	Current Student Count	Attendance Report	23-24 October Student Count
Nunamiut School	16	46.36% (↓ 8.98%)	14
Tikiġaq School	15	69.80% (↑ 3.70%)	19
Nuġsut Trapper School	9	60.61% (↑ 14.54%)	15
Kali School	5	85.45% (↓ 2.55%)	10
Aġak School	8	60.23% (↑ 17.28%)	10
Harold Kaveolook School	5	65.71% (↓ 5.91%)	6
Meade River School	6	52.90% (↑ 9.49%)	8
Fred Ipalook Elementary School	89	63.04% (↑ 3.08%)	99
Total	153	62.00% (↑ 2.93%)	181

Night School Enrollment		
School	Current Student Count	23-24 October Student Count
KIITA Learning Community	7	12

The symbols (↑ and ↓) next to the data indicates if there was an increase or decrease since the last monthly report, the percentage next to the symbol indicates the amount it has increased or decreased by since the last monthly report.

Below, you will find two new charts. The first chart is a year over year enrollment summary starting with 2020. The second chart is showing year over year attendance throughout the school year. We provide this information so that trends can be seen, however please note that due to COVID related attendance policies, as well as the way that attendance was previously calculated, the attendance rate for the 2021-2022 school year is inflated. During that time, when a school was in “Red” status, or operating remotely, all attendance was “present.” During that school year, we also counted a student present daily, rather than period by period in Middle School and High School. This data is helpful however in order to see peaks and valleys by month.





## NSBSD Enrollment: Monthly & Yearly Comparison

### North Slope Borough School District



Filters

Year(s):  
Multiple valu..

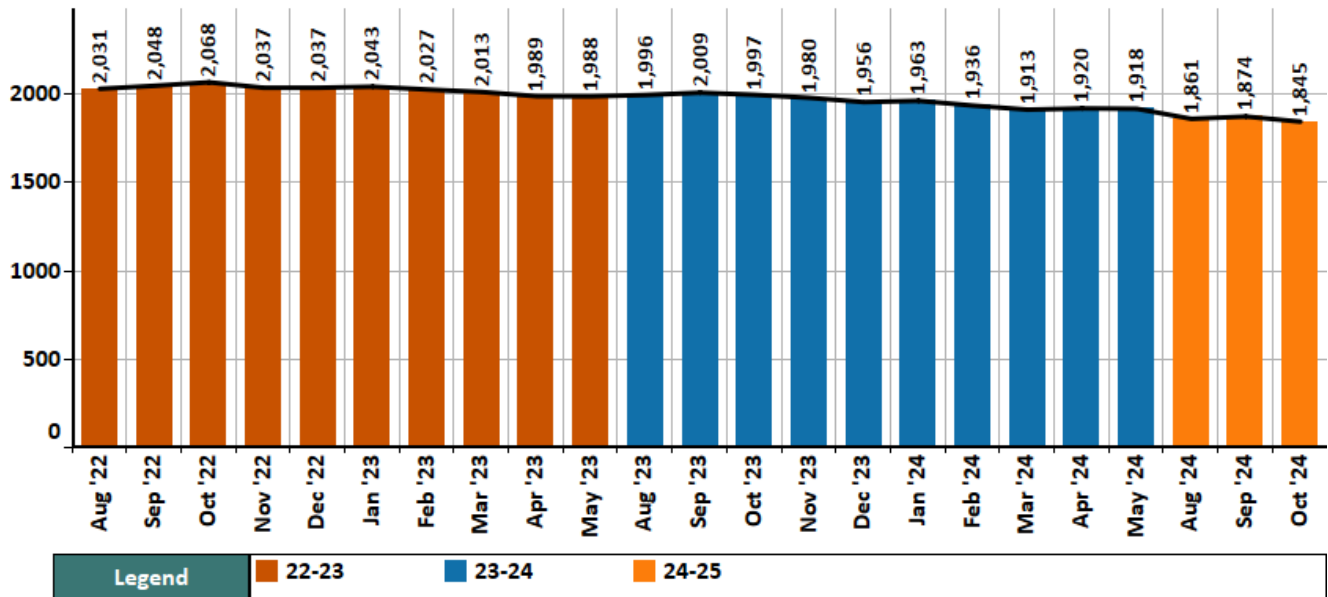
Month(s):  
All

School(s):  
NSBSD

Grade(s):  
All Grades

↓ PDF

Year(s): 24-25, 23-24, 22-23 | Month(s): All | Grade(s): All Grades



#### NSBSD Enrollment, Month-to-Month Changes

	22-23		23-24		24-25	
Aug	2,031		1,996		1,861	
Sep	2,048	↑ 17 0.8%	2,009	↑ 13 0.7%	1,874	↑ 13 0.7%
Oct	2,068	↑ 20 1.0%	1,997	↓ 12 -0.6%	1,845	↓ 29 -1.5%
Nov	2,037	↓ 31 -1.5%	1,980	↓ 17 -0.9%		
Dec	2,037	- -	1,956	↓ 24 -1.2%		
Jan	2,043	↑ 6 0.3%	1,963	↑ 7 0.4%		
Feb	2,027	↓ 16 -0.8%	1,936	↓ 27 -1.4%		
Mar	2,013	↓ 14 -0.7%	1,913	↓ 23 -1.2%		
Apr	1,989	↓ 24 -1.2%	1,920	↑ 7 0.4%		
May	1,988	↓ 1 -0.1%	1,918	↓ 2 -0.1%		

#### NSBSD Enrollment, Year-to-Year Changes

	22-23		23-24		24-25	
Aug	2,031		1,996	↓ 35 -1.7%	1,861	↓ 135 -6.8%
Sep	2,048		2,009	↓ 39 -1.9%	1,874	↓ 135 -6.7%
Oct	2,068		1,997	↓ 71 -3.4%	1,845	↓ 152 -7.6%
Nov	2,037		1,980	↓ 57 -2.8%		
Dec	2,037		1,956	↓ 81 -4.0%		
Jan	2,043		1,963	↓ 80 -3.9%		
Feb	2,027		1,936	↓ 91 -4.5%		
Mar	2,013		1,913	↓ 100 -5.0%		
Apr	1,989		1,920	↓ 69 -3.5%		
May	1,988		1,918	↓ 70 -3.5%		



## NSBSD Attendance: Monthly & Yearly Comparison

### North Slope Borough School District



Filters

Year(s):  
Multiple valu..

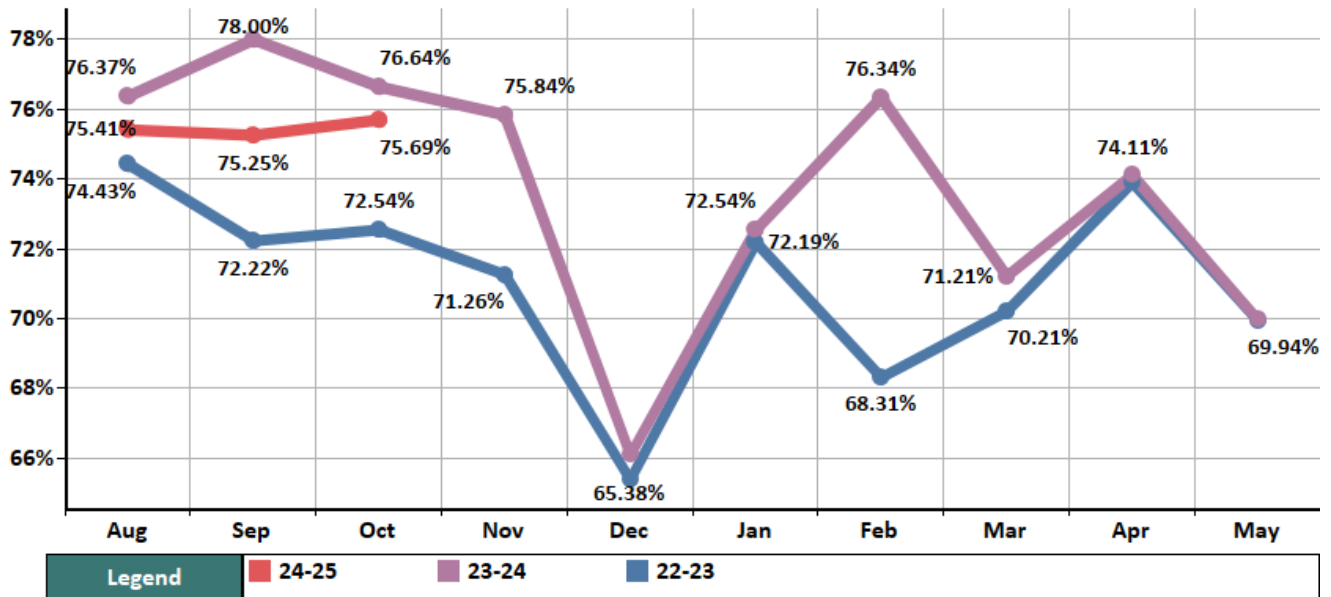
Month(s):  
All

School:  
NSBSD

Grade:  
All Students (..

↓ PDF

Year(s): 24-25, 23-24, 22-23 | Month(s): All | Grade: All Students (Pre-K - 12)



#### NSBSD Attendance, Month-to-Month Changes

	22-23	23-24	24-25
Aug	74.43%	76.37%	75.41%
Sep	72.22%	78.00%	75.25%
Oct	72.54%	76.64%	75.69%
Nov	71.26%	75.84%	
Dec	65.38%	66.09%	
Jan	72.19%	72.54%	
Feb	68.31%	76.34%	
Mar	70.21%	71.21%	
Apr	73.91%	74.11%	
May	69.94%	69.96%	

#### NSBSD Attendance, Year-to-Year Changes

	22-23	23-24	24-25
Aug	74.43%	76.37%	75.41%
Sep	72.22%	78.00%	75.25%
Oct	72.54%	76.64%	75.69%
Nov	71.26%	75.84%	
Dec	65.38%	66.09%	
Jan	72.19%	72.54%	
Feb	68.31%	76.34%	
Mar	70.21%	71.21%	
Apr	73.91%	74.11%	
May	69.94%	69.96%	