

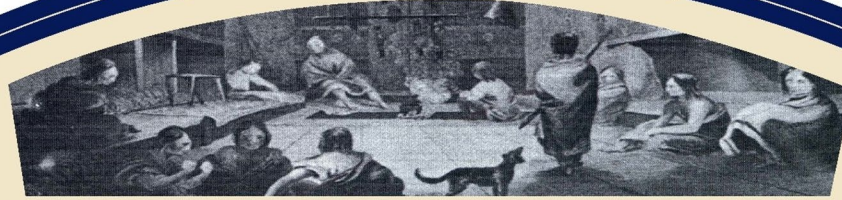


ELC

Environmental Learning Center



# Traditional Homeland to the Clackamas People.



## The Clackamas People



The land here at the Environmental Learning Center sits in the traditional homeland of the Clackamas or Clow we walla people. In mythological times, Coyote and other beings made changes to the landscape to prepare it for the arrival of the Clackamas people. This connection to place created a culture in which the people and landscape are inseparable.



**LIFEWAYS** Newell Creek and other local waterways served as a lifeblood to the area's early inhabitants. With the resources in this region and with their proximity to Willamette Falls, the Clackamas reached agreements with surrounding peoples, providing the Clackamas with a wealth of food and goods. These agreements allowed them to maintain a rich culture and establish a sustainable trade-based economy that reached throughout the Pacific Northwest and beyond.

**CHANGE** As trade routes expanded and early exploration began, so did diseases that had a devastating effect on the native populations of western Oregon. By the early 19th century, 90 percent of the native population succumbed. With western expansion and increased hostilities between settlers and native peoples, negotiations were made with the Clackamas and others, resulting in the Willamette Valley Treaty of 1855, which relocated the Clackamas to the Grand Ronde Reservation.

**TODAY** The Clackamas people — the namesake of Clackamas Community College — have persevered through this difficult time. Conservation efforts made by the tribes have led to reestablished gathering rights and the increased ability to manage their natural resources and to partner with places like the Environmental Learning Center. The continued presence of the Clackamas, here and at Grand Ronde, maintains identity and ensures cultural knowledge of this place for future generations.



This project is supported with funding from Metro's Nature in Neighborhoods Program.

Supported by:



Metro



# ELC

Environmental Learning Center

Clackamas  
Community College

# Original construction of the ELC in the 1970's.

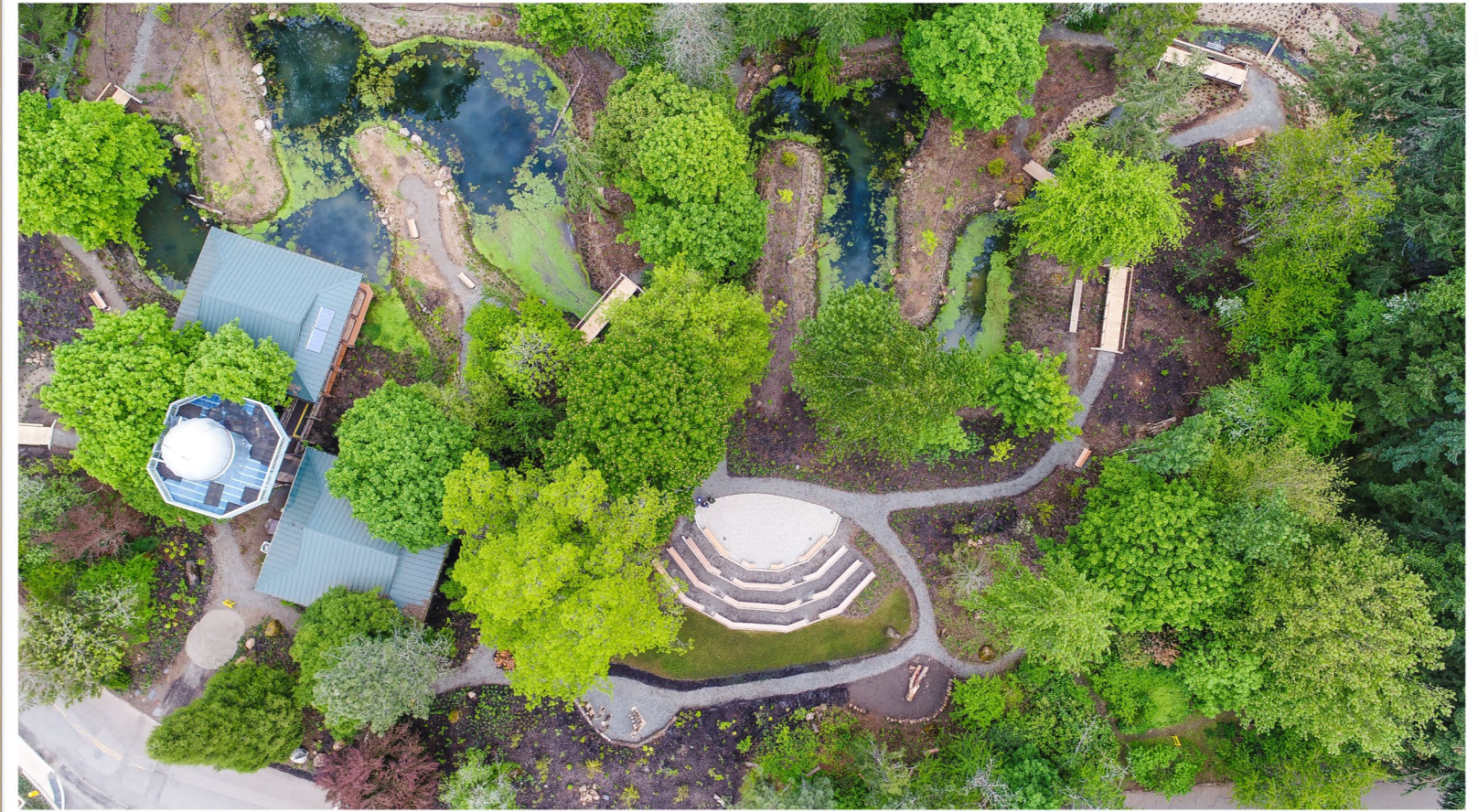


ELC

Environmental Learning Center



# An Outdoor Learning Laboratory & Demonstration Site for Stormwater Management.



ELC

Environmental Learning Center



# Community Recreation

*Explore the trails, relax on a bench, enjoy the wildlife*



ELC

Environmental Learning Center



# Nature Spy Discovery Days

*Discover nature together, through activities like story time, crafts and walks in the forest/wetland habitat.*

- Family-Friendly
- Daily from 10:00 a.m. to 12:00 p.m.
- Free and no registration necessary



ELC

Environmental Learning Center

 Clackamas  
Community College

# Partner Talks

*ELC Partners offer opportunities based on a variety of topics.*

- CCC Calendar
- Visit the ELC
- Contact organizations

**STREAM~N Team**



**Oregon State University**  
Extension Service  
Master Gardener™



**ELC**

Environmental Learning Center



# Volunteer Opportunities

*Group and Individual opportunities available with supplies and support provided.*

## *Stewardship Saturdays*

- First Saturdays of the Month from 10:00 a.m. to 12:00 p.m.

## *Individual Opportunities*

- Based on interest and availability
- Indoor and Outdoors



# Paid Programming

*Interactive, hands-on learning in the ELC's wetland and forest ecosystems for learners of all ages.*



ELC

Environmental Learning Center

 Clackamas  
Community College

# Thank you!

*We are grateful for the support that we get from CCC and other partners.*



# Upcoming Summer Events

## *Explore the Outdoors: Insects*

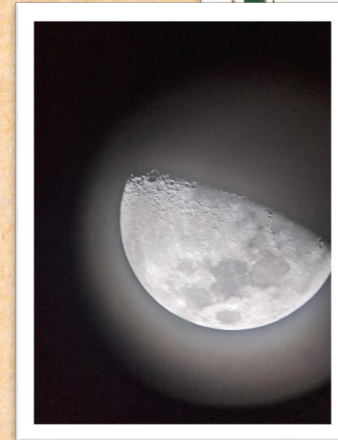
June 6, 2026, 10:00 a.m. to 2:00 p.m.

## *Annual Star Party with Rose City Astronomers*

August 27, 2026, 9:00 a.m. to 12:00 a.m.

## *ELC Open House*

September 24, 2026, 5:00 p.m. to 8:00 p.m.



ELC

Environmental Learning Center

Clackamas  
Community College

Hope to see you around the wetland!

[www.clackamas.edu/elc](http://www.clackamas.edu/elc)

For more information:  
Heidi Blackwell  
[Heidi.Blackwell@clackamas.edu](mailto:Heidi.Blackwell@clackamas.edu)  
(503) 594-3015

