



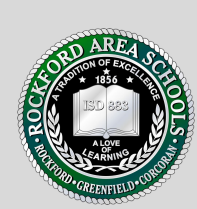
Rockford Area Schools

*presented by,
Brenda Nyhus REAMS Principal*

January 21, 2026

#ROCKETS883





Rockford Elementary Arts Magnet School General Updates



General Updates

- **Kids Heart Challenge-Kick off end of January**
- **I Love to Read Month-February**
- **Kindergarten Round Up-February 5th**



Rockford Elementary Arts Magnet School 2025-2026 School Improvement Goals



REAMS School Improvement Plan (SIP)-Goal #1

Instructional Design

- Teachers have continued to evaluate and refine standards-alignments within their teaching focus
 - Classroom teachers continue curriculum mapping with CKLA
 - Interventionists/special education staff evaluate structures for addressing students needs
 - Specialists will continue curriculum maps K-4.
- (*PLCs *Common Planning Time *Staff Development Days)



REAMS School Improvement Plan (SIP)-Goal #1

Engagement Continuum

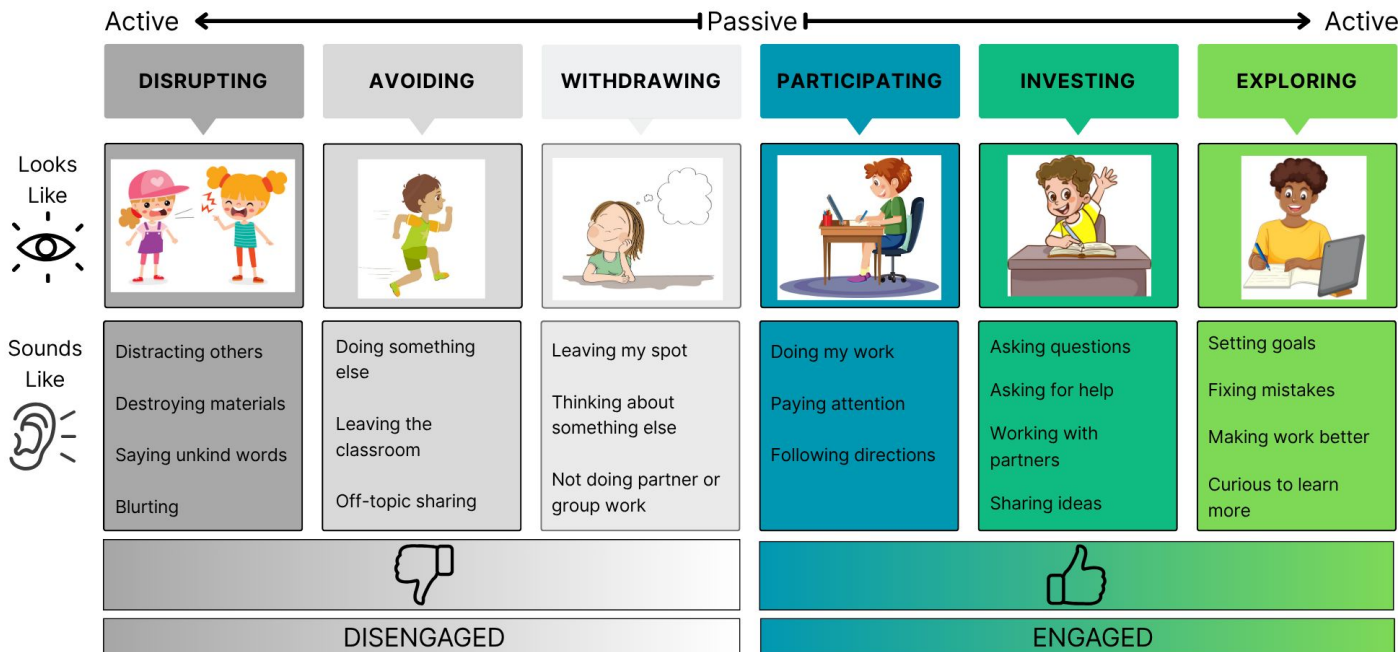
During the 2025-2026 school year, staff and students will learn and implement a building wide engagement continuum.



REAMS School Improvement Plan (SIP)-Goal #1 Engagement Continuum



Engage to Learn

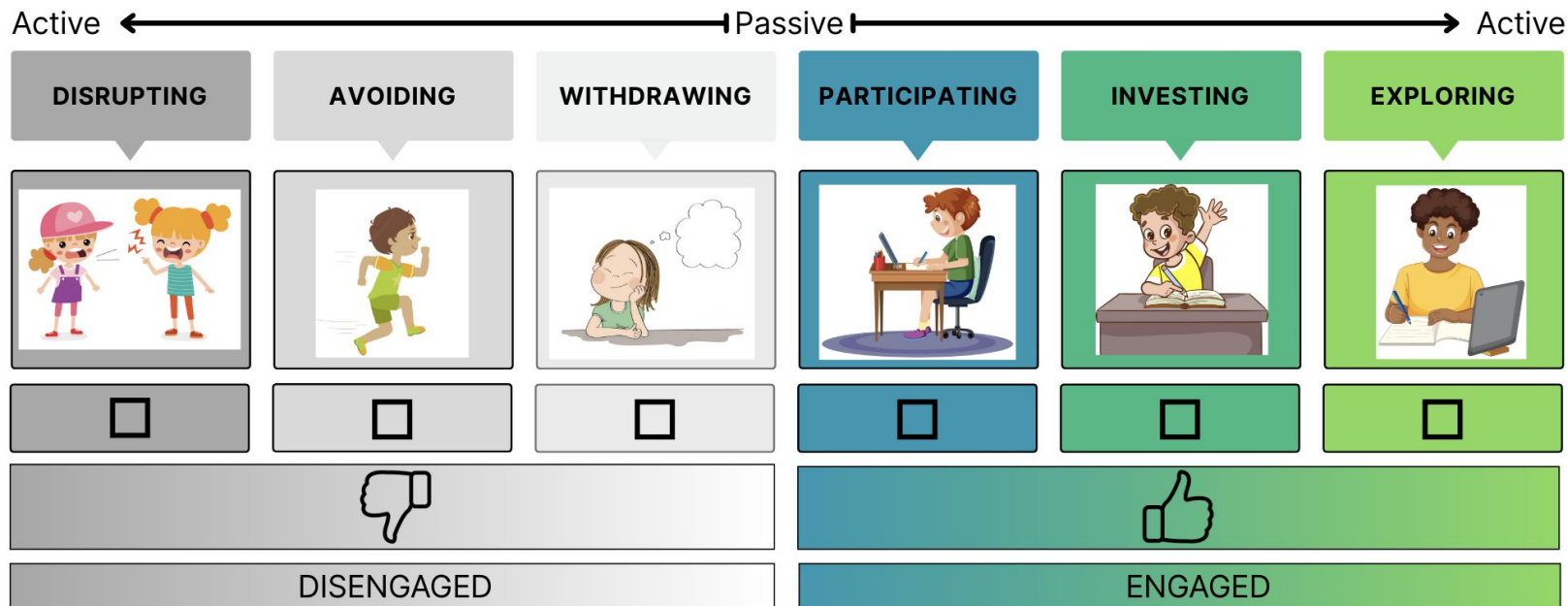




REAMS School Improvement Plan (SIP)-Goal #1

Engagement Continuum

Where were you in class today?





REAMS School Improvement Plan (SIP)-Goal #1

Engagement Continuum

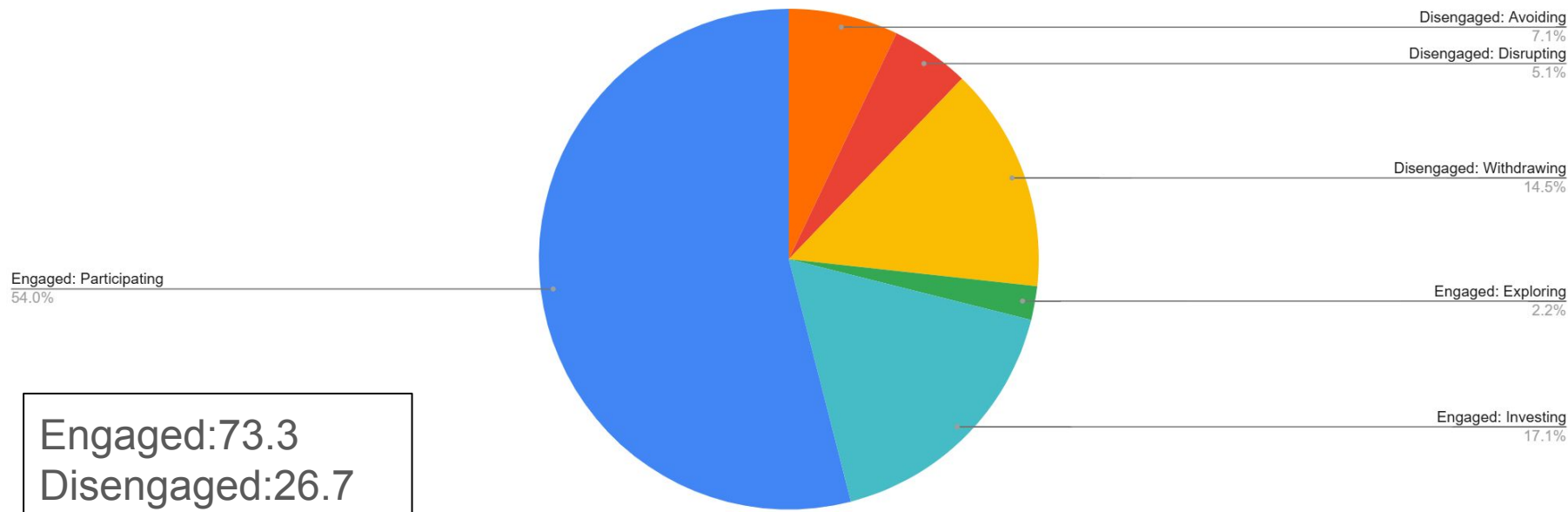
- All teachers in grades K-4 are identifying student engagement levels. Students in all classrooms are self-reflecting with various strategies: (thumbs up/down, 1-6, etc).
- Students at this level are really learning what it means to be engaged.
- Grades 3 and 4 -Teachers are also collecting engagement data from their students electronically.



REAMS School Improvement Plan (SIP)-Goal #1

Engagement Continuum-Teacher Responses

Teacher Reflection on Engagement





REAMS School Improvement Plan (SIP)-Goal #1

Engagement Continuum-Student Responses

Student Engagement Reflection (Grades 3-4)

Withdrawing

14.6%

Participating

48.1%

Avoiding

1.9%

Disrupting

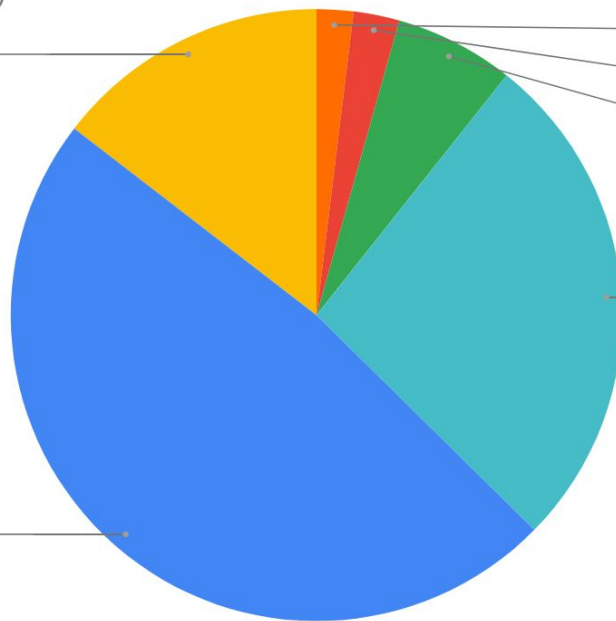
2.4%

Exploring

6.3%

Investing

26.7%



Engaged:81.1
Disengaged:18.9



REAMS School Improvement Plan (SIP)-Goal #1

Data Backed Student Support

During the 2025–2026 school year, REAMS will strengthen the MTSS process and Student Achievement Plan by:

- **Maintaining and refining** the data review structures established in 2024–2025, while identifying opportunities to improve effectiveness and efficiency.
- **Facilitating student ownership of learning** by guiding students in reflecting on their FAST scores, setting meaningful academic goals, and tracking progress throughout the year.
- **Implementing targeted Student Achievement Action Plans** for identified students, using data-driven decisions to provide supports that address specific academic and behavioral needs. **SAP Plans 70 students**
- *The collective aim is to ensure consistent, systematic support for all learners.*



REAMS School Improvement Plan (SIP)-Goal #2

Student Connectedness

Students in grades three and four will be given mySABERS survey in the fall and spring regarding their sense of belonging at REAMS.

Students in grades K-4 will receive weekly guidance lessons with the counselors during the 2024-25 school year.

- The counselors will administer the mySABERS survey with the third and fourth grade teachers. Letters will be sent home to parents prior to the survey as an opt out option. Guidance lessons will be provided by the counselors to each class in grades K-4 weekly. Lessons will include topics of connectedness.
- mySABERS was given in October to students. Teachers took the mySABERS about each of their students in October as well. Parents of Identified students were notified and have received additional support by meeting with the counselors and time with a Rockee Buddy.



REAMS School Improvement Plan (SIP)-Goal #3

Student Growth based on FastBridge Testing

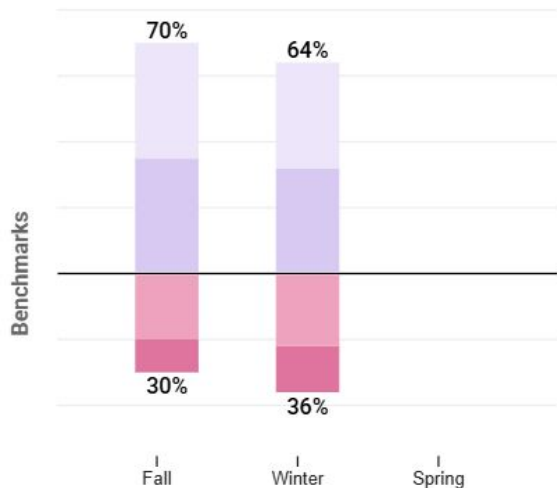
By the end of the school year, 25% of students who tested in the “some risk” or “high risk” categories in math and reading will demonstrate growth by either moving into the “low risk” or “some risk” category, or by meeting or beating their spring predicted score based on their fall growth report score.



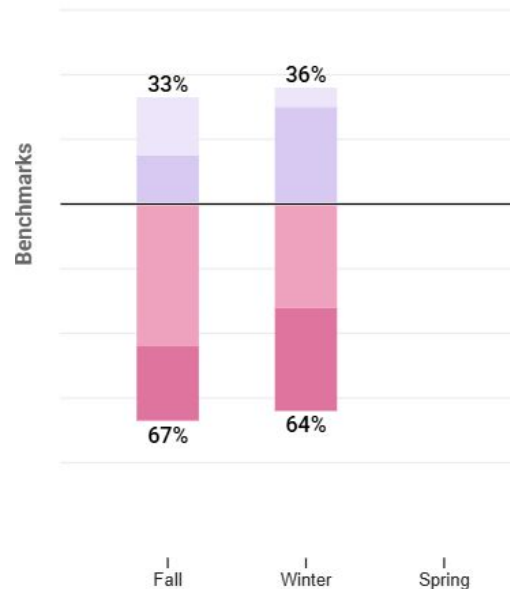
REAMS School Improvement Plan (SIP)-Goal #3

Fall Data (Some Risk and High Risk Students)

Whole Building



ML Learners





REAMS work with COMPASS

- *Collaborative Minnesota Partnerships to Advance Student Success-Through Resource Training and Solutions*
- Identified Area-ML Specific Hispanic and Latino Students
- Team at Rockford working with two consultants to really drill down in data and assistance to raise achievement in this cell of students.



REAMS School Improvement Plan (SIP)-Goal #3

Student Growth based on FastBridge Testing

What Next?:

- Analyze data on the January 19 staff development day
- Individualize plans (SAP) for students who are at Some and High Risk
- Review schedule specific to WIN time for the 2026-27 school year to increase instructional time
- Can we work together better as an entire school to address the needs of struggling students?
- Use of IXL-assisting students in their growth
- Team of teachers and Brenda meeting with Continuous Improvement team from Resource Training and Solutions to work on targeted areas of need



Thank You.