

Anatomage[®]

TABLE



Improve Outcomes

Amplify your students' learning outcomes with authentic cadaveric content and real-time physiology technology.

Save Cost & Time

Reduce lab expenses with unlimited access to digitized cadavers. Streamline lab workflow with our ready-to-use lab practical tools.

Enhance Tech Leadership

Upgrade your labs with cutting-edge technology, positioning your school as a leader in medical education.

About Anatomage Table

The Anatomage Table is the most advanced real-human-based medical education system. This state-of-the-art platform offers digitized human cadavers and superior medical learning tools, transforming medical education and training. The platform also receives FDA clearance for various medical applications, including diagnostics. By incorporating the Anatomage Table, education and healthcare institutions can enhance educational outcomes, lower laboratory costs, and establish their technological leadership.

Taking Medical Education to the Next Level

Anatomage's flagship content equips students, teachers, and medical professionals with advanced technological tools that accelerate their education and healthcare journeys.



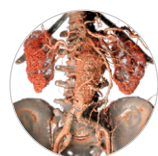
Anatomage Bodies

- ✓ Accurately digitized from frozen cadaveric slices
- ✓ The entire system of arteries and veins is fully traced and functionally connected
- ✓ The Anatomage Body portfolio includes male, female, geriatric and pregnant life-size bodies



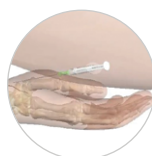
Real-Time Physiology

- ✓ Anatomage Bodies offers real-time, medically accurate simulations of living functions
- ✓ Our physiology simulations include: Birth Simulation, Cardiology, Dental Arch, Developmental Anatomy, Facial Expressions, Homeostasis, Kinesiology, Neurology, Ocular Applications, Pathways, Pregnancy, Renal Physiology, Respiration



In-Depth Clinical Database

- ✓ Accurately visualize thousands of real-life patient CT/MRI scans, highlighting both common and rare diseases
- ✓ 1,190 histology slides featuring tissue throughout the human body
- ✓ 77 real-cadaveric prosected scans showcasing different regions of human anatomy



Clinical Procedures

- ✓ Practice clinical procedures on real human bodies
- ✓ Explore the physical behaviors of anatomy in real-time during the procedures
- ✓ Surgical techniques include: Arthroscopy, Bronchoscopy, Catheterization, Endoscopic Simulation, Injection Procedures, and more

Anatmage Table at a Glance

Purpose

- Supplies instructors and professionals with life-size digitized real cadavers, real-time physiology simulations that elevate performance, engagement, and practical experiences
- Offers extensive anatomy and physiology database for valuable insights that drive education, research, and innovation forward
- Provides clinical procedural simulation tools to improve patient care, communications, and outcomes

Applications

Education

- Cadaveric Labs
- Lecture Aids
- Self-Directed Learning
- Technology Showcase

Clinical Training & Care

- Diagnosis
- Surgical Training
- Patient Communications

Instructional Tools

- Learning Assistant mode
- Annotation and notes tools
- Self-assessment and quiz tools

Additional Content

- Regional Anatomy: 41 regional scans up to 0.04 mm high resolution
- Animal Anatomy: 5 real-tissue cadavers. 312 animal scans, including both CT and MRI imaging.
- Botany: featuring botanic cases in 3D

Hardware

- 84" life-sized table, multi-touch screen
- Dimensions: 87" x 33" x 28" (LxHxW)
- WiFi, Bluetooth, HDMI, USB, Ethernet ports

Clinical Simulations on Digitized Cadavers



Dissection

Perform layer-by-layer cuts

Point-to-point

Dissect specific anatomical structures between specified start and end points

Brightness/Contrast Slider Bars

Adjust cadaveric volume to add/remove large systems or structures

Custom Clipping Plane

Define a region or structure for removal

Endoscopic Flythrough

Endoscopically examine the interior of a human body

Anatomical Planes

Orient the cadaver for coronal, sagittal, and axial views

Craniotomy Tool

Virtually remove a section of the skull to study the brain

Explore Tool

Instantly identify any selected structure

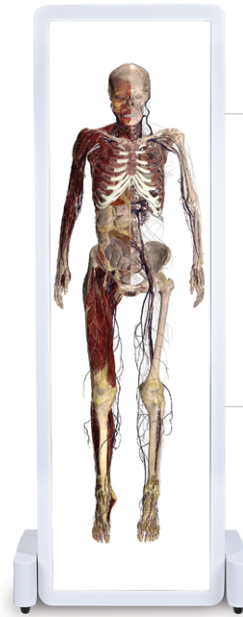


Table Convertible

An adjustable version of Anatomage Table, Table Convertible can be tilted into a vertical position and is ideal for classroom demonstrations.

Contact us:

To schedule a demo, visit [anatmage.com](https://www.anatmage.com)