

BEYE Elementary - Capacity Review

3/1/16
 D97 will maintain (3) Kindergarten Sections and utilize Teaching Aides for projected school years

School Year	Kindergarten				Grade 1				Grade 2				Grade 3				Grade 4				Grade 5				Totals 1st thru 5th Grade		School Year
	Ehlers Projections	Clsm Req'd Calculation (20/class)	Clsm Required (20/class) No Aide	Actual Clsrms	Ehlers Projections	Clsm Req'd Calculation (24/class)	Clsm Required (24/class) No Aide	Actual Clsrms	Ehlers Projections	Clsm Req'd Calculation (24/class)	Clsm Required (24/class) No Aide	Actual Clsrms	Ehlers Projections	Clsm Req'd Calculation (24/class)	Clsm Required (24/class) No Aide	Actual Clsrms	Ehlers Projections	Clsm Req'd Calculation (24/class)	Clsm Required (24/class) No Aide	Actual Clsrms	Ehlers Projections	Clsm Req'd Calculation (24/class)	Clsm Required (24/class) No Aide	Actual Clsrms	Total 1-5 classrooms Required	Total 1-5 Classrooms Actual	
2016/17	64	3.2	4	3	68	2.8	3.0	3	70	2.9	3	2	54	2.3	3	3	76	3.2	4	3	62	2.6	3	4	16	15	2016/17
2017/18	62	3.1	4	3	70	2.9	3.0	3	71	3.0	3	2	71	3.0	3	3	56	2.3	3	3	77	3.2	4	4	16	15	2017/18
2018/19	62	3.1	4	3	68	2.8	3.0	3	73	3.0	4	2	72	3.0	3	3	74	3.1	4	3	57	2.4	3	4	17	15	2018/19
2019/20	61	3.1	4	3	68	2.8	3.0	3	71	3.0	3	2	75	3.1	4	3	75	3.1	4	3	75	3.1	4	4	18	15	2019/20
2020/21	60	3.0	3	3	67	2.8	3.0	3	71	3.0	3	2	72	3.0	3	3	77	3.2	4	3	76	3.2	4	4	17	15	2020/21

** Does not identify number of special needs students in self-contained classrooms
 An Aide could be utilized to accommodate the smaller increases,
 However, the Ehlers report does not show a significant decrease in population

LEGEND

- Actual classrooms LESS THAN required classrooms
- Actual classrooms MORE THAN required classrooms
- Unclear of class size requirements

BEYE Elementary - Room Size Comparison

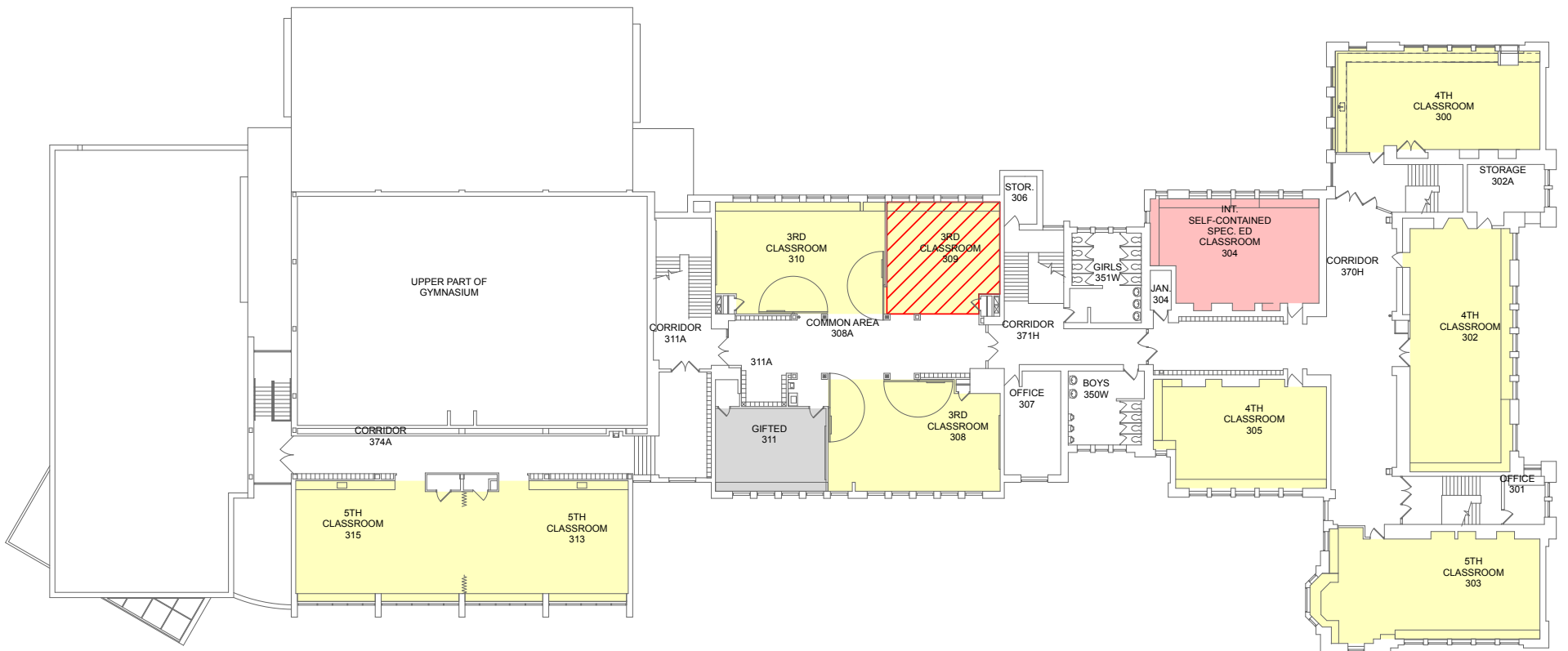
Room No.	Grade Served	Square Footage (Gross)	Average SF in District (Gross)	Comments
100	1st Grade	998	809	Plus toilet room
102	1st Grade	824	809	
205	1st Grade	866	809	
104	2nd Grade	864	856	Plus toilet room
105	2nd Grade	858	856	Plus toilet room
308	3rd Grade	932	843	
309	3rd Grade	587	843	
310	3rd Grade	892	843	
300	4th Grade	1037	824	
302	4th Grade	1296	824	
305	4th Grade	869	824	
303	5th Grade	1152	931	
313	5th Grade	967	931	
315	5th Grade	988	931	
204	5th Grade	854	931	
200	Kindergarten	998	1315	Plus toilet room
203	Kindergarten	1024	1315	Plus adjacent Play Room (186 sf)
202	Kindergarten	1144	1315	
103	Self-Contained (Primary) Special Ed	1102		
304	Self-Contained (Intermediate) Special Ed	856		
101	Lang. Arts	469		
111	Music	1206		Plus practice rooms (2)
112	Hephzibah	1147		
114	Art	1082		Plus Kiln and storage
208	Title 1	805		
210	Computer Media Center	735		
212	Center	2227		
213	Spanish	462		

STR ANALYSIS OF EHLERS 2016 REPORT
 NOTES (IN RED) FROM CABINET MEETING
 DISCUSSION/DECISIONS ON 3/1/16

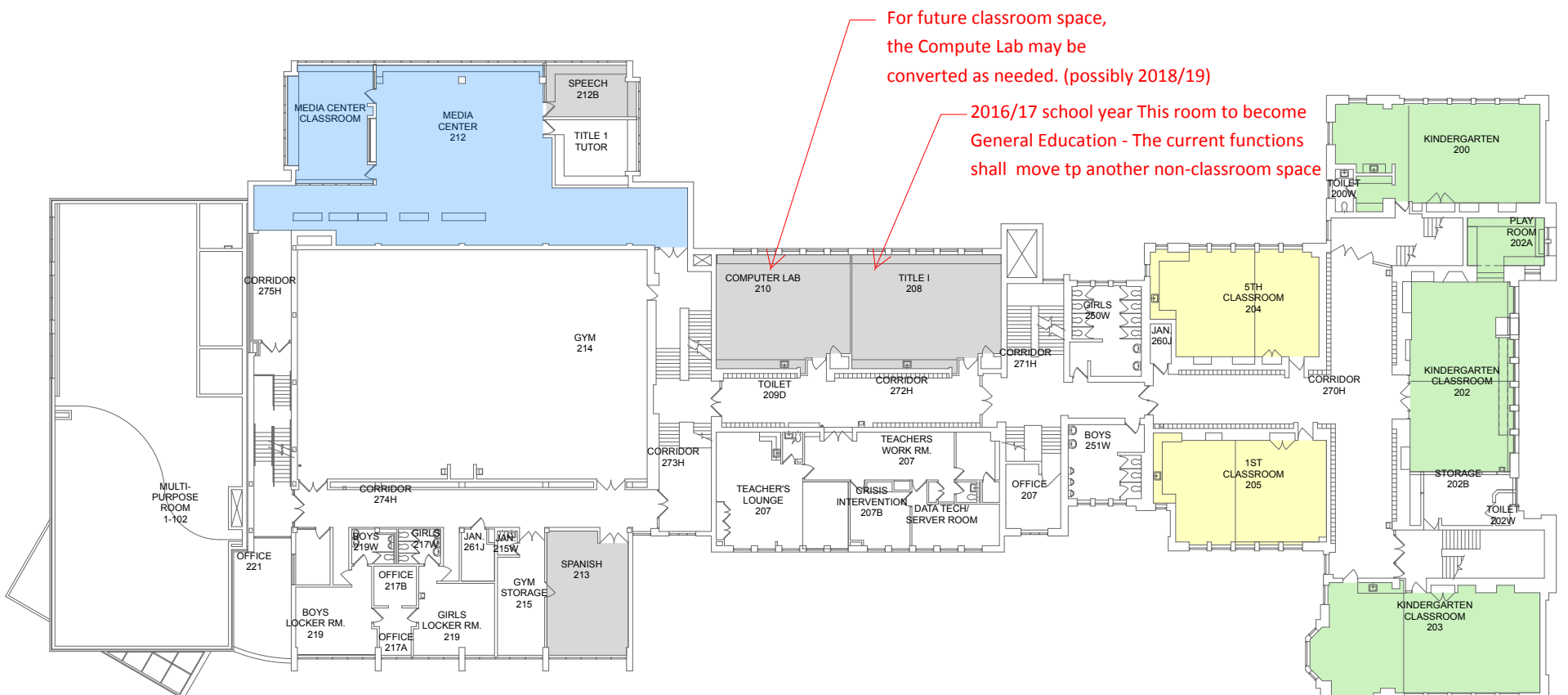
**STR ANALYSIS OF EHLERS 2016 REPORT
 NOTES (IN RED) FROM CABINET MEETING
 DISCUSSION/DECISIONS ON 3/1/16**

COLOR KEY:

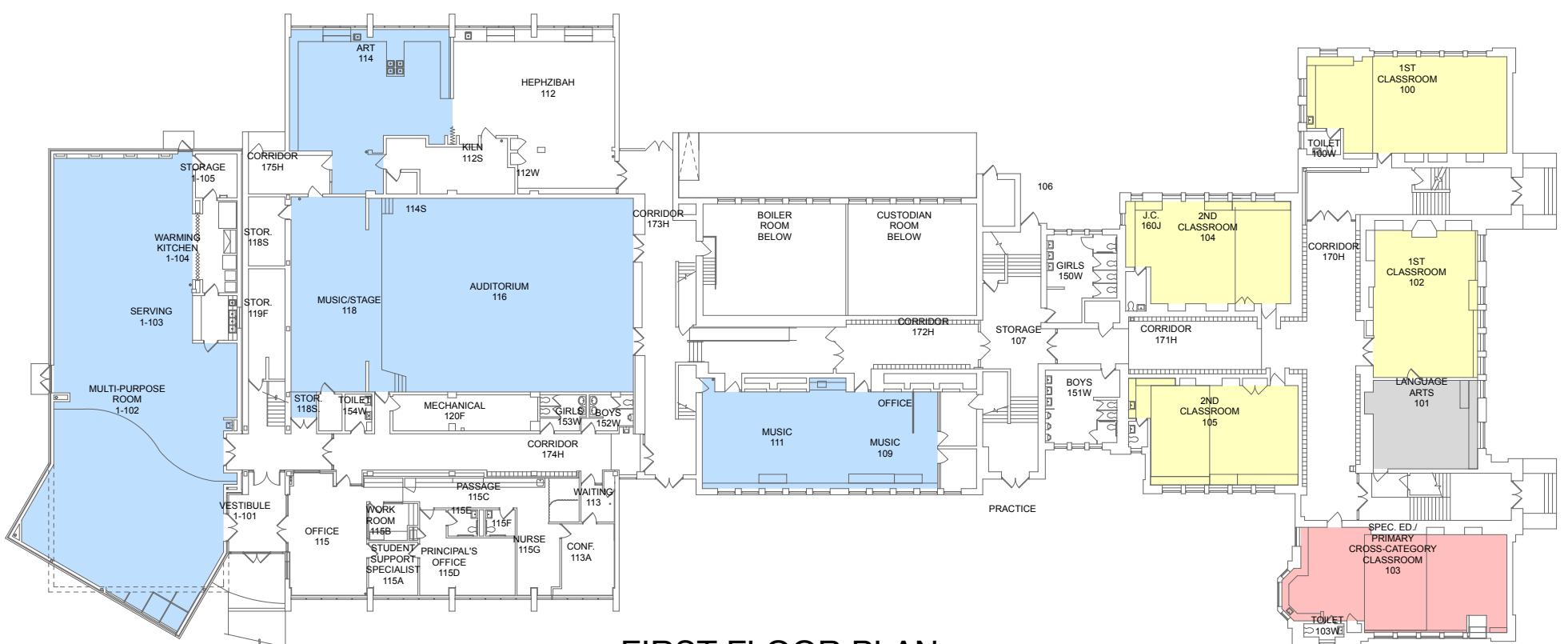
- CLASSROOM (GRADE 1-5)
- PRE-K
EARLY CHILDHOOD
SELF-CONTAINED SPEC-ED
- KINDERGARTEN
- SPECIALIZED ROOM
- SUPPORT
- UNDERSIZED ROOM
REQUIRES RENOVATION
TO MEET USE



THIRD FLOOR PLAN



SECOND FLOOR PLAN



FIRST FLOOR PLAN

For future classroom space,
 the Compute Lab may be
 converted as needed. (possibly 2018/19)

2016/17 school year This room to become
 General Education - The current functions
 shall move to another non-classroom space

BEYE ELEMENTARY SCHOOL

ENROLLMENT PROJECTION ANALYSIS



HATCH Elementary - Capacity Review

School Year	Kindergarten				Grade 1				Grade 2				Grade 3				Grade 4				Totals 1st thru 5th Grade		School Year				
	Ehlers Projections	Clsmr Req'd Calculation (20/class)	Clsmr Required (20/class) No Aide	Actual Clsrms	Ehlers Projections	Clsmr Req'd Calculation (24/class)	Clsmr Required (24/class) No Aide	Actual Clsrms	Ehlers Projections	Clsmr Req'd Calculation (24/class)	Clsmr Required (24/class) No Aide	Actual Clsrms	Ehlers Projections	Clsmr Req'd Calculation (24/class)	Clsmr Required (24/class) No Aide	Actual Clsrms	Ehlers Projections	Clsmr Req'd Calculation (24/class)	Clsmr Required (24/class) No Aide	Actual Clsrms	Ehlers Projections	Clsmr Req'd Calculation (24/class)		Clsmr Required (24/class) No Aide	Actual Clsrms	Total 1-5 classrooms Required	Total 1-5 Classrooms Actual
2016/17	52	2.6	3	3	57	2.4	3	4	77	3.2	4	3	50	2.1	3	3	48	2.0	2	3	54	2.3	3	3	15	16	2016/17
2017/18	52	2.6	3	3	53	2.2	3	4	60	2.5	3	3	73	3.0	4	3	51	2.1	3	3	47	2.0	2	3	15	16	2017/18
2018/19	51	2.6	3	3	54	2.3	3	4	56	2.3	3	3	57	2.4	3	3	75	3.1	4	3	51	2.1	3	3	16	16	2018/19
2019/20	54	2.7	3	3	52	2.2	3	4	56	2.3	3	3	53	2.2	3	3	59	2.5	3	3	75	3.1	4	3	16	16	2019/20
2020/21	53	2.7	3	3	55	2.3	3	4	55	2.3	3	3	54	2.3	3	3	55	2.3	3	3	59	2.5	3	3	15	16	2020/21

** There do not appear to be any self-contained classrooms at Hatch

LEGEND

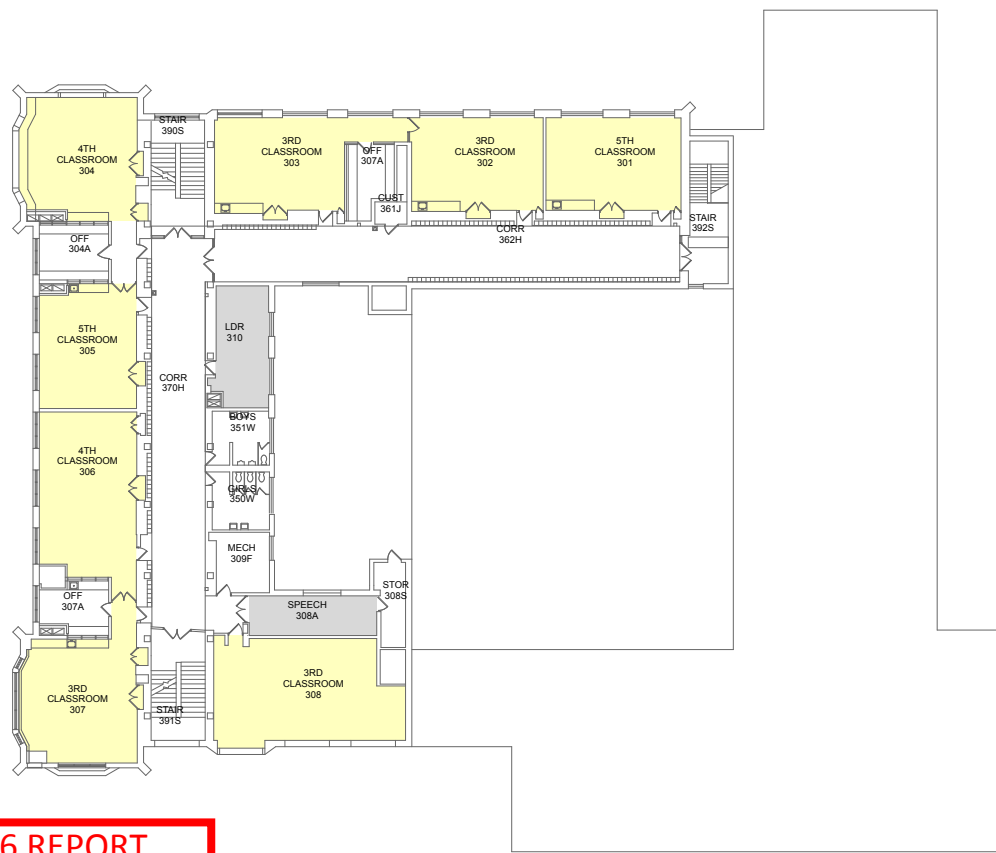
- Actual classrooms LESS THAN required classrooms
- Actual classrooms MORE THAN required classrooms
- Unclear of class size requirements

HATCH Elementary - Room Size Comparison

Room No.	Grade Served	Square Footage (Gross)	Average SF in District (Gross)	Comments
103	1st Grade	606	809	Plus toilet room
104	1st Grade	729	809	Plus toilet room
112	1st Grade	556	809	Plus storage rooms (old locker/shower rooms)
204	1st Grade	722	809	
201	2nd Grade	518	856	Confirm office was removed
203	2nd Grade	892	856	
207B	2nd Grade	555	856	Adjacent to computer lab - could be enlarged
302	3rd Grade	648	843	
303	3rd Grade	643	843	
308	3rd Grade	910	843	
304	4th Grade	719	824	
306	4th Grade	851	824	
307	4th Grade	757	824	
208	5th Grade	1068	931	
301	5th Grade	647	931	
305	5th Grade	635	931	
101	Kindergarten	966	1315	Plus toilet room
107	Kindergarten	1667	1315	Plus toilet room
108	Kindergarten	789	1315	Plus toilet room
105	Multi-Purpose	1832		
114	Music	986		Plus storage room
115	Art	1154		Plus Kiln/storage room
116	Gymnasium	3575		
206	Library	2385		
207A	Computer Lab	566		
308A	Speech	311		
310	LDR	330		

STR ANALYSIS OF EHLERS 2016 REPORT
NOTES (IN RED) FROM CABINET MEETING
DISCUSSION/DECISIONS ON 3/1/16

- COLOR KEY:**
- CLASSROOM (GRADE 1-5)
 - PRE-K
EARLY CHILDHOOD
SELF-CONTAINED SPEC-ED
 - KINDERGARTEN
 - SPECIALIZED ROOM
 - SUPPORT
 - UNDERSIZED ROOM
REQUIRES RENOVATION
TO MEET USE

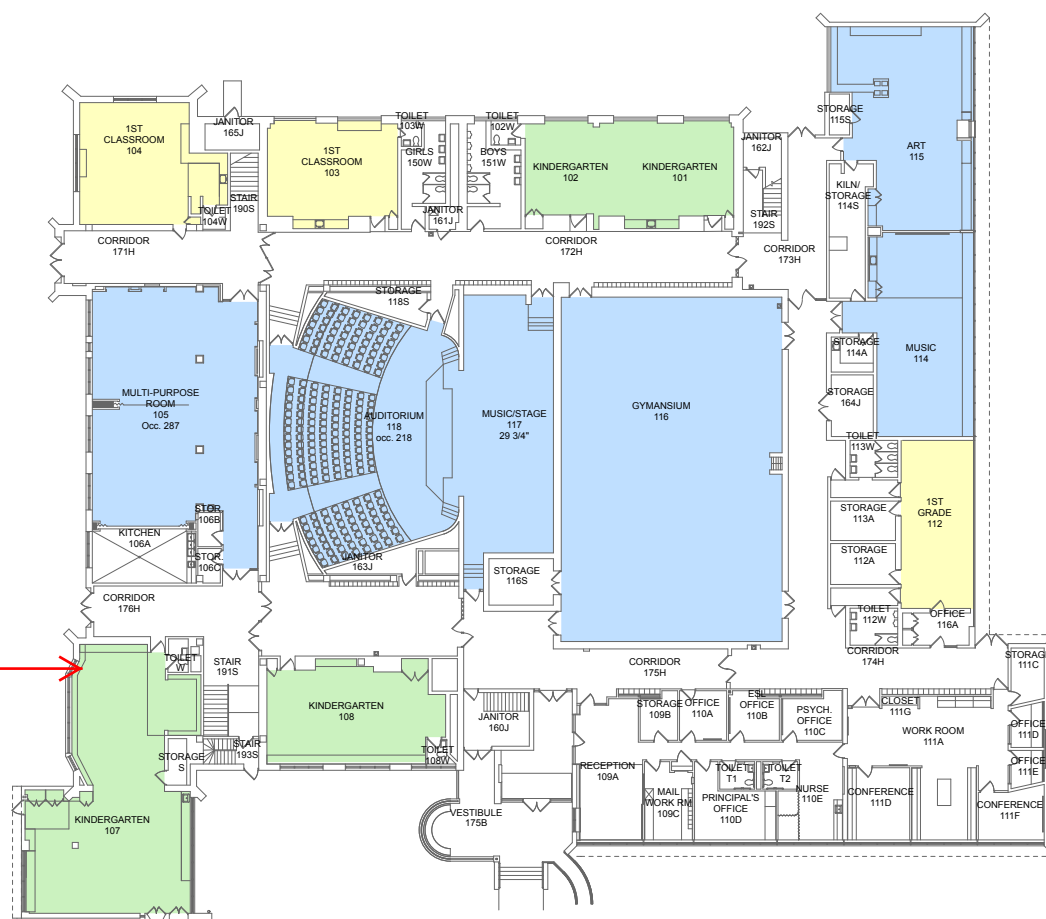


THIRD FLOOR PLAN

STR ANALYSIS OF EHLERS 2016 REPORT
NOTES (IN RED) FROM CABINET MEETING
DISCUSSION/DECISIONS ON 3/1/16



SECOND FLOOR PLAN



STR to investigate
future possibility of this
space being utilized as
two instructional spaces

FIRST FLOOR PLAN

HATCH ELEMENTARY SCHOOL



HOLMES Elementary - Capacity Review

School Year	Kindergarten				Grade 1				Grade 2				Grade 3				Grade 4				Totals 1st thru 5th Grade		School Year				
	Ehlers Projections	Clsmr Req'd Calculation (20/class)	Clsmr Required (20/class) No Aide	Actual Clsrms	Ehlers Projections	Clsmr Req'd Calculation (24/class)	Clsmr Required (24/class) No Aide	Actual Clsrms	Ehlers Projections	Clsmr Req'd Calculation (24/class)	Clsmr Required (24/class) No Aide	Actual Clsrms	Ehlers Projections	Clsmr Req'd Calculation (24/class)	Clsmr Required (24/class) No Aide	Actual Clsrms	Ehlers Projections	Clsmr Req'd Calculation (24/class)	Clsmr Required (24/class) No Aide	Actual Clsrms	Ehlers Projections	Clsmr Req'd Calculation (24/class)		Clsmr Required (24/class) No Aide	Actual Clsrms	Total 1-5 classrooms Required	Total 1-5 Classrooms Actual
2016/17	88	4.4	5	4	107	4.5	5	5	100	4.2	5	4	83	3.5	4	4	92	3.8	4	4	79	3.3	4	4	22	21	2016/17
2017/18	91	4.6	5	4	97	4.0	5	5	113	4.7	5	4	106	4.4	5	4	90	3.8	4	4	98	4.1	5	4	24	21	2017/18
2018/19	90	4.5	5	4	100	4.2	5	5	101	4.2	5	4	118	4.9	5	4	112	4.7	5	4	94	3.9	4	4	24	21	2018/19
2019/20	92	4.6	5	4	96	4.0	4	5	102	4.3	5	4	104	4.3	5	4	123	5.1	6	4	116	4.8	5	4	25	21	2019/20
2020/21	93	4.7	5	4	98	4.1	5	5	98	4.1	5	4	104	4.3	5	4	109	4.5	5	4	127	5.3	6	4	26	21	2020/21

** Does not identify number of special needs students in self-contained classrooms
 An Aide could be utilized to accommodate the smaller increases,
 While the Ehlers report does show a decrease in population after 20/21, the trend is for a population greater than 15/16 and 16/17 populations

LEGEND

- Actual classrooms LESS THAN required classrooms
- Actual classrooms MORE THAN required classrooms
- Unclear of class size requirements

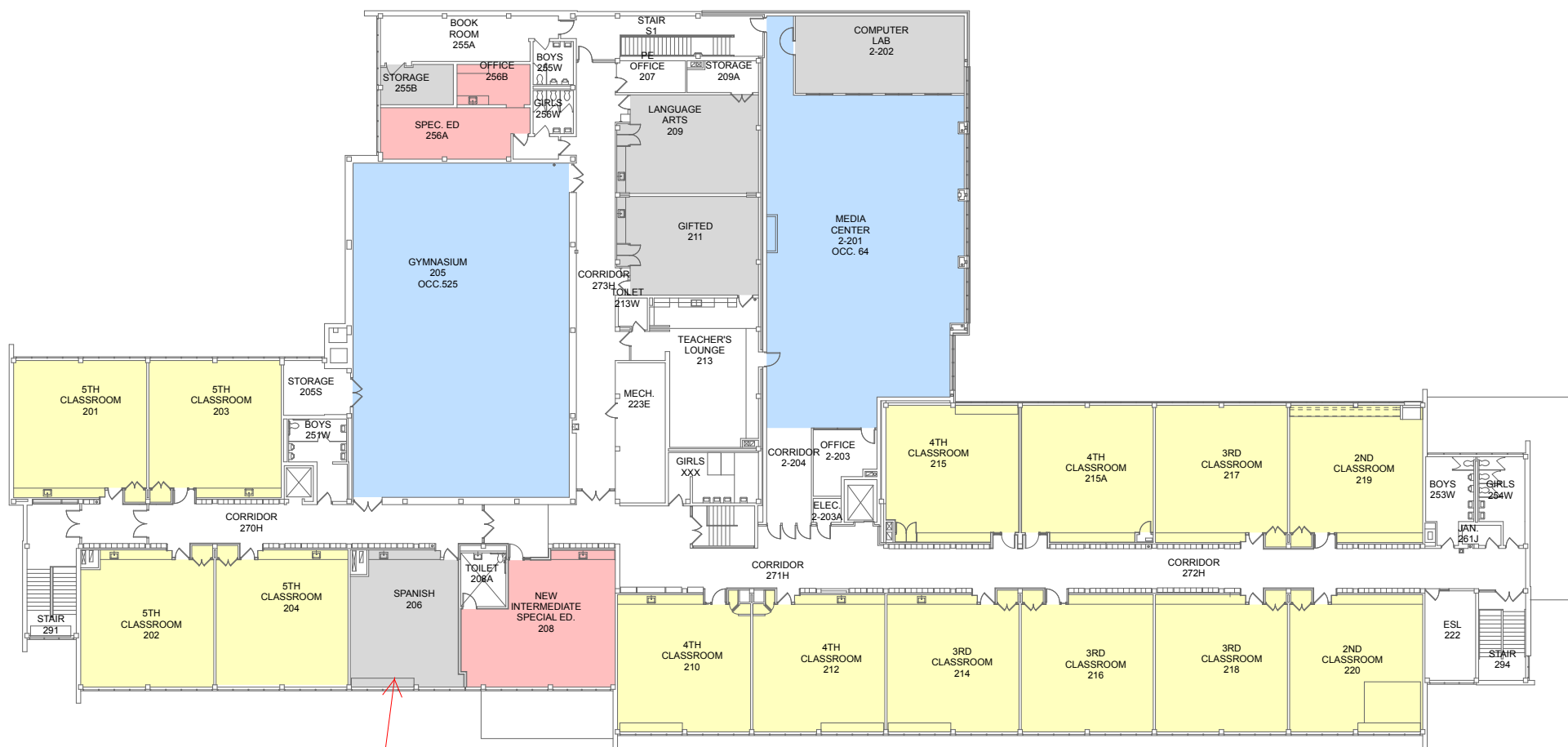
HOLMES Elementary - Room Size Comparison

Room No.	Grade Served	Square Footage (Gross)	Average SF in District (Gross)	Comments
107	1st Grade	781	809	Plus toilet room
108	1st Grade	861	809	no toilet
110	1st Grade	832	809	Plus toilet room
112	1st Grade	836	809	Plus toilet room
114	1st Grade	842	809	Plus toilet room
101	2nd Grade	981	856	Plus toilet room
102	2nd Grade	983	856	Plus toilet room
219	2nd Grade	881	856	no toilet
220	2nd Grade	885	856	no toilet
214	3rd Grade	867	843	
216	3rd Grade	867	843	
217	3rd Grade	868	843	
218	3rd Grade	870	843	
210	4th Grade	879	824	
212	4th Grade	877	824	
215	4th Grade	848	824	
215A	4th Grade	847	824	
201	5th Grade	883	931	
202	5th Grade	861	931	
203	5th Grade	875	931	
204	5th Grade	875	931	
104A	Kindergarten	675	1315	Plus toilet room
104B	Kindergarten	1048	1315	Renovations are required to accommodate use as (2) Kindgrtn rooms
109 & 111	Kindergarten	1625	1315	Plus (2) toilet rooms
113	Kindergarten	1243	1315	Plus coat room; toilet; storage
208	Intermediate Special Ed	864		Plus toilet (118sf)
103	OT/PT	629		
118	Art	1465		Plus kiln/storage
119	Music	938		Plus 4 practice/storage rooms
205	Gymnasium	3511		Potential for scheduling issues with growth
206	Spanish	692		
209	Language Arts	651		No daylight
211	Gifted	655		No daylight
1-101	Multi-Purpose	3575		Need to increase for population growth or determine if scheduling will make it work
2-201	Media Center	3068		
2-202	Computer Lab	630		

STR ANALYSIS OF EHLERS 2016 REPORT
 NOTES (IN RED) FROM CABINET MEETING
 DISCUSSION/DECISIONS ON 3/1/16

**STR ANALYSIS OF EHLERS 2016 REPORT
NOTES (IN RED) FROM CABINET MEETING
DISCUSSION/DECISIONS ON 3/1/16**

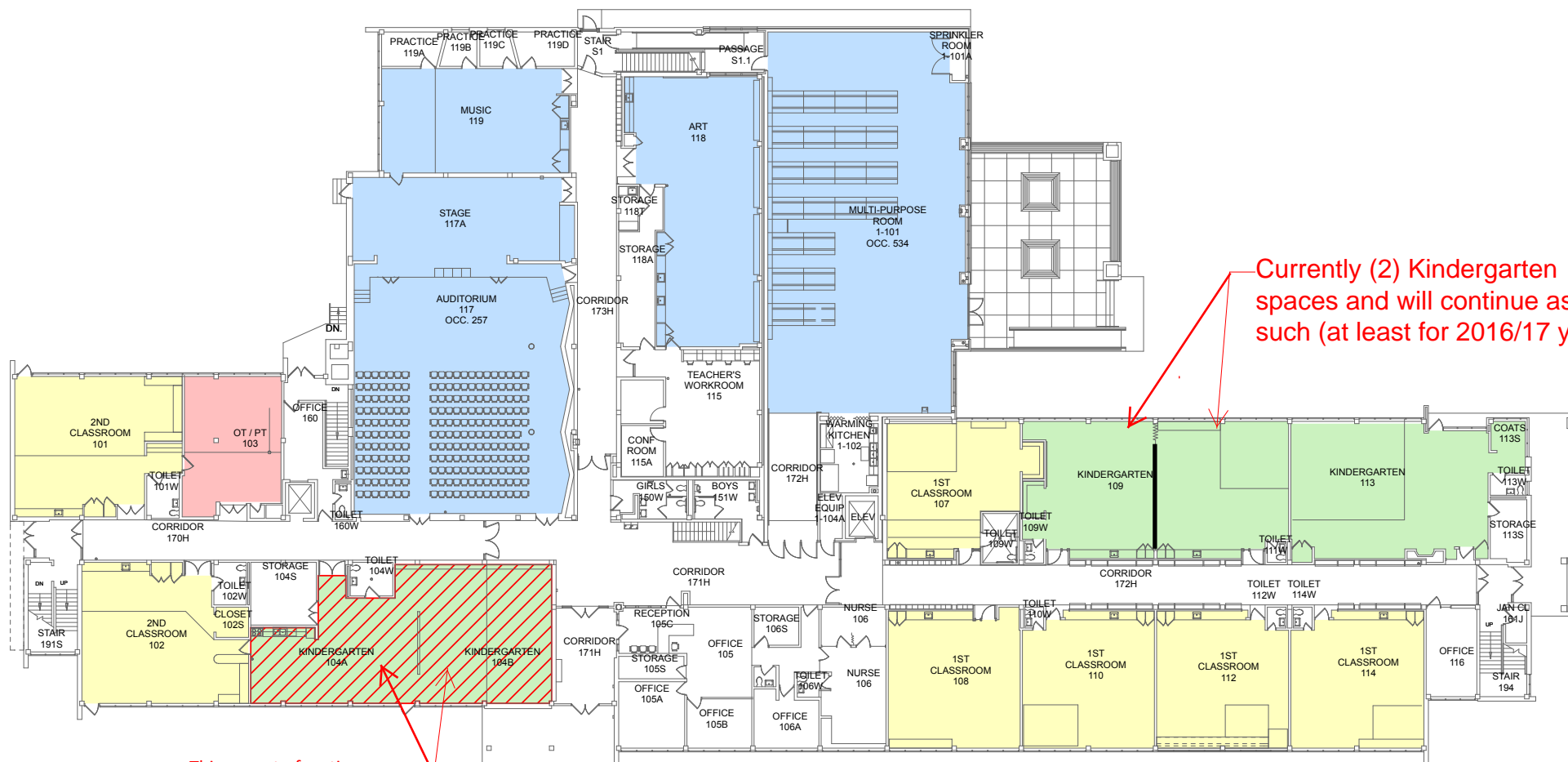
- COLOR KEY:**
- CLASSROOM (GRADE 1-5)
 - PRE-K
EARLY CHILDHOOD
SELF-CONTAINED SPEC-ED
 - KINDERGARTEN
 - SPECIALIZED ROOM
 - SUPPORT
 - UNDERSIZED ROOM
REQUIRES RENOVATION
TO MEET USE



SECOND FLOOR PLAN

2016/17 school year
this shall become a General
Education Classroom -
Spanish moves to a cart

**STR and D97 to begin
planning for an addition
at this school**



FIRST FLOOR PLAN

This room to function as
more of a team teaching
area with two Kindergarten
sections (Similar to Mann)

Currently (2) Kindergarten
spaces and will continue as
such (at least for 2016/17 year)

HOLMES ELEMENTARY SCHOOL



IRVING Elementary - Capacity Review

3/1/16
 D97 will maintain 4 sections
 and utilize a teaching aide for
 2016/17 school year

School Year	Kindergarten				Grade 1				Grade 2				Grade 3				Grade 4				Totals 1st thru 5th Grade		School Year				
	Ehlers Projections	Clstrm Req'd Calculation (20/class)	Clstrm Required (20/class) No Aide	Actual Clstrms	Ehlers Projections	Clstrm Req'd Calculation (24/class)	Clstrm Required (24/class) No Aide	Actual Clstrms	Ehlers Projections	Clstrm Req'd Calculation (24/class)	Clstrm Required (24/class) No Aide	Actual Clstrms	Ehlers Projections	Clstrm Req'd Calculation (24/class)	Clstrm Required (24/class) No Aide	Actual Clstrms	Ehlers Projections	Clstrm Req'd Calculation (24/class)	Clstrm Required (24/class) No Aide	Actual Clstrms	Ehlers Projections	Clstrm Req'd Calculation (24/class)		Clstrm Required (24/class) No Aide	Actual Clstrms	Total 1-5 classrooms Required	Total 1-5 Classrooms Actual
2016/17	71	3.6	4	4	75	3.1	4	4	69	2.9	3	4	65	2.7	3	4	100	4.2	5	4	86	3.6	4	4	18	20	2016/17
2017/18	71	3.6	4	4	72	3.0	3	4	75	3.1	4	4	70	2.9	3	4	64	2.7	3	4	102	4.3	5	4	18	20	2017/18
2018/19	69	3.5	4	4	72	3.0	3	4	73	3.04	4	4	76	3.2	4	4	69	2.9	3	4	65	2.7	3	4	17	20	2018/19
2019/20	72	3.6	4	4	70	2.9	3	4	73	3.04	4	4	74	3.1	4	4	75	3.1	4	4	70	2.9	3	4	18	20	2019/20
2020/21	72	3.6	4	4	74	3.1	4	4	71	3.0	3	4	74	3.1	4	4	72	3.0	3	4	76	3.2	4	4	18	20	2020/21

** Does not identify number of special needs students in self-contained classrooms
 Population is anticipated to decrease with 16-17 school year.
 Trend does not show any increase beyond 5 students.

LEGEND

- Actual classrooms LESS THAN required classrooms
- Actual classrooms MORE THAN required classrooms
- Unclear of class size requirements

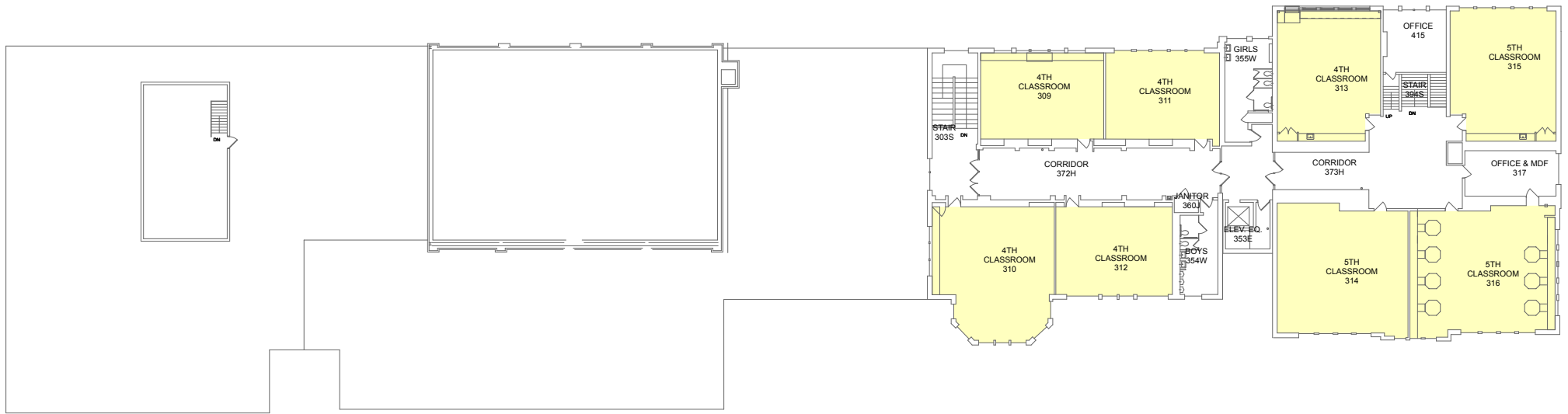
IRVING Elementary - Room Size Comparison

Room No.	Grade Served	Square Footage (Gross)	Average SF in District (Gross)	Comments
100A	1st Grade	864	809	
100B	1st Grade	1175	809	Multi Level Floor - not accessible
100C	1st Grade	895	809	
109	1st Grade	963	809	Plus toilet room and (3) storage rooms originally practice rooms)
202	2nd Grade	829	856	
204	2nd Grade	819	856	
206	2nd Grade	831	856	
201B	2nd Grade	1170	856	
213	3rd Grade	849	843	
214	3rd Grade	828	843	
215	3rd Grade	862	843	
218	3rd Grade	842	843	
309	4th Grade	681	824	
310	4th Grade	926	824	
311	4th Grade	637	824	
312	4th Grade	629	824	
313	5th Grade	844	931	
314	5th Grade	855	931	
315	5th Grade	1057	931	
316	5th Grade	1157	931	oufitted as a science lab with casework
110	Kindergarten	1421	1315	plus toilet and storage
114	Kindergarten	1176	1315	plus toilet room
115	Kindergarten	808	1315	plus toilet room
116	Kindergarten	901	1315	plus toilet room
113	K-1 Self-Contained Spec Ed	833		plus toilet room
209	4-5 Self-Contained Spec Ed	685		
212	2-3 Self-Contained Spec Ed	633		plus toilet room
101	Multi-Purpose	2370		
102	Multi-Use Room	787		Principal would like to demo old Home Ed equipment - safety concerns
117	Speech	279		
118	OT/PT	257		
200	Library	3350		
203	Gymnasium	3500		
208	Title 1	523		plus toilet room
210	Music	857		Plus toilet - includes old teachers' lounge kitchenette
211	Gifted	672		
100E	Spanish	390		
104-6	Art	1460		Plus Kiln and Storage
200A	LDR K-3	328		
200B	LDR 4-5	316		
201A	Computer Lab	967		

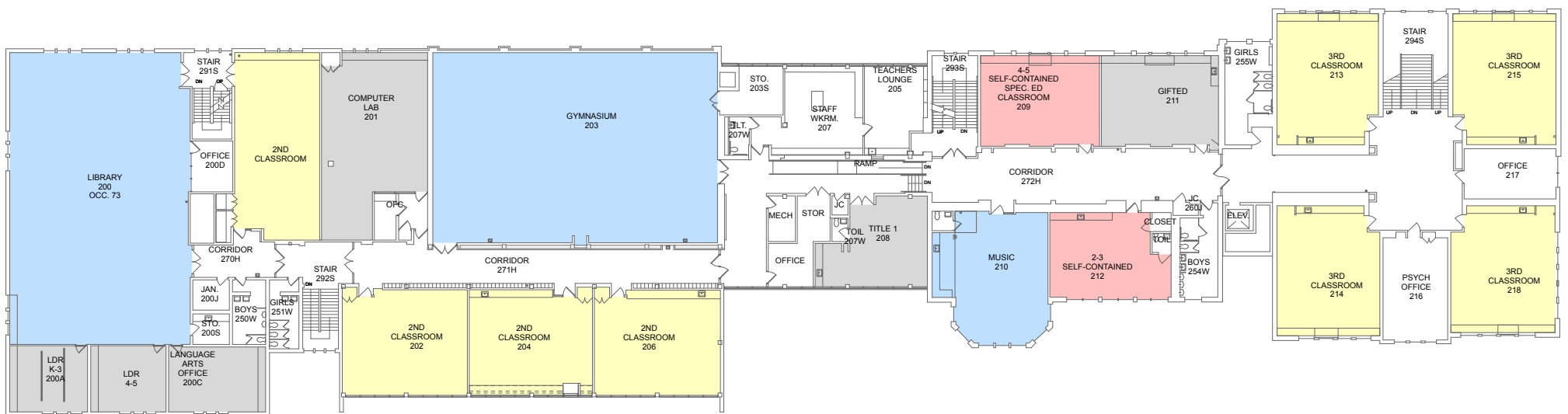
STR ANALYSIS OF EHLERS 2016 REPORT
 NOTES (IN RED) FROM CABINET MEETING
 DISCUSSION/DECISIONS ON 3/1/16

**STR ANALYSIS OF EHLERS 2016 REPORT
NOTES (IN RED) FROM CABINET MEETING
DISCUSSION/DECISIONS ON 3/1/16**

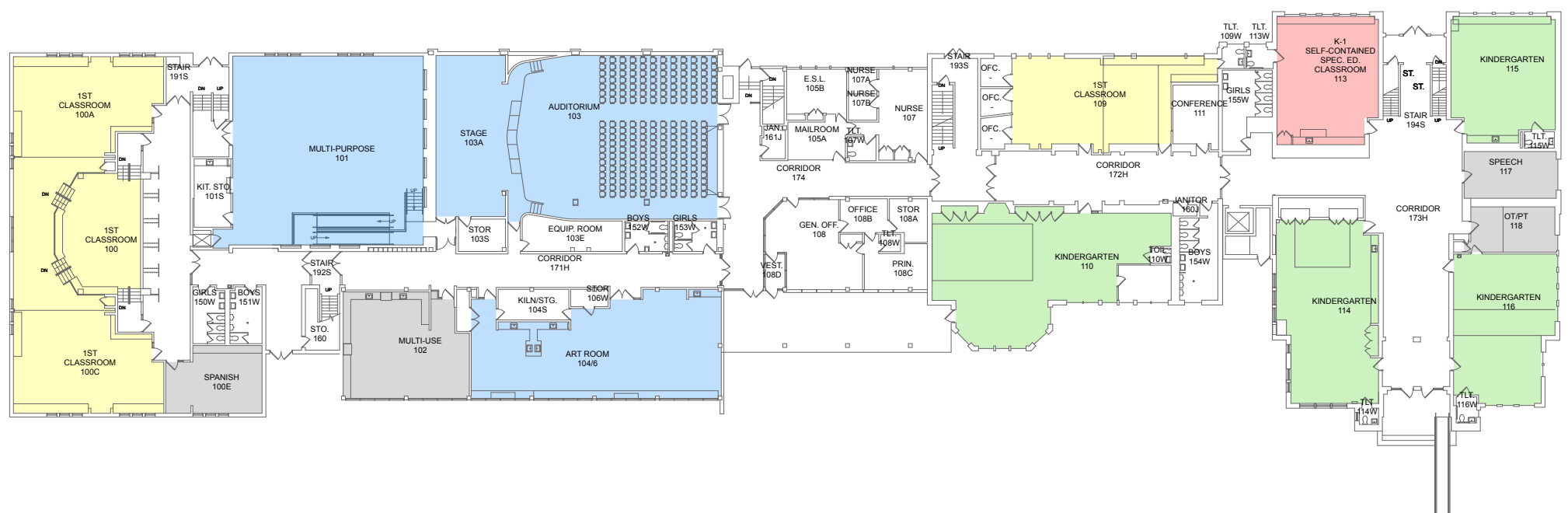
- COLOR KEY:**
- CLASSROOM (GRADE 1-5)
 - PRE-K
EARLY CHILDHOOD
SELF-CONTAINED SPEC-ED
 - KINDERGARTEN
 - SPECIALIZED ROOM
 - SUPPORT
 - UNDERSIZED ROOM
REQUIRES RENOVATION
TO MEET USE



THIRD FLOOR PLAN



SECOND FLOOR PLAN



FIRST FLOOR PLAN

IRVING ELEMENTARY SCHOOL



LINCOLN Elementary - Capacity Review

3/1/16
 D97 intends to maintain 4 sections
 at 1st grade and utilize teaching
 aide(s) for 2016/17 school year

School Year	Kindergarten				Grade 1				Grade 2				Grade 3				Grade 4				Grade 5				Totals 1st thru 5th Grade		School Year
	Ehlers Projections	Clstrm Req'd Calculation (20/class)	Clstrm Required (20/class) No Aide	Actual Clstrms	Ehlers Projections	Clstrm Req'd Calculation (24/class)	Clstrm Required (24/class) No Aide	Actual Clstrms	Ehlers Projections	Clstrm Req'd Calculation (24/class)	Clstrm Required (24/class) No Aide	Actual Clstrms	Ehlers Projections	Clstrm Req'd Calculation (24/class)	Clstrm Required (24/class) No Aide	Actual Clstrms	Ehlers Projections	Clstrm Req'd Calculation (24/class)	Clstrm Required (24/class) No Aide	Actual Clstrms	Ehlers Projections	Clstrm Req'd Calculation (24/class)	Clstrm Required (24/class) No Aide	Actual Clstrms	Total 1-5 classrooms Required	Total 1-5 Classrooms Actual	
2016/17	95	4.8	5	5	101	4.2	5	5	109	4.5	5	5	110	4.6	5	5	112	4.7	5	5	110	4.6	5	4	25 24	24	2016/17
2017/18	95	4.8	5	5	103	4.3	5	5	100	4.2	5	5	109	4.5	5	5	110	4.6	5	5	114	4.8	5	4	25	24	2017/18
2018/19	92	4.6	5	5	103	4.3	5	5	101	4.2	5	5	100	4.2	5	5	109	4.5	5	5	112	4.7	5	4	25	24	2018/19
2019/20	97	4.9	5	5	101	4.2	5	5	102	4.3	5	5	101	4.2	5	5	100	4.2	5	5	111	4.6	5	4	25	24	2019/20
2020/21	97	4.9	5	5	106	4.4	5	5	99	4.1	5	5	102	4.3	5	5	102	4.3	5	5	101	4.2	5	4	25	24	2020/21

** Does not identify number of special needs students in self-contained classrooms

LEGEND

- Actual classrooms LESS THAN required classrooms
- Actual classrooms MORE THAN required classrooms
- Unclear of class size requirements

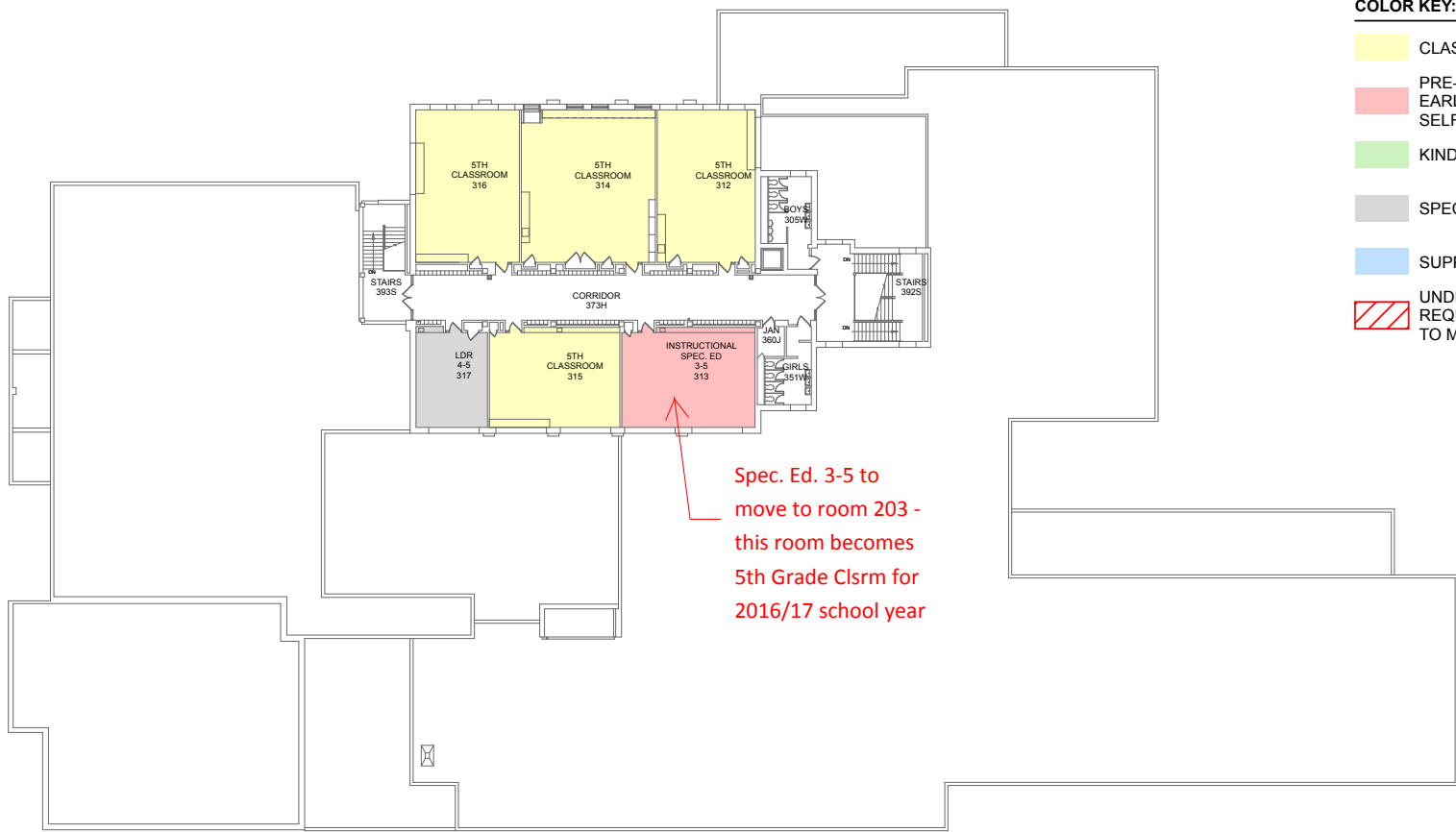
LINCOLN Elementary - Room Size Comparison

Room No.	Grade Served	Square Footage (Gross)	Average SF in District (Gross)	Comments
100	1st Grade	701	809	
203	1st Grade	545	809	plus toilet room
213	1st Grade	870	809	
107A	1st Grade	533	809	
107B	1st Grade	568	809	
102	2nd Grade	693	856	
115	2nd Grade	702	856	
200	2nd Grade	701	856	
206	2nd Grade	677	856	plus toilet room
215	2nd Grade	707	856	
202	3rd Grade	693	843	
204	3rd Grade	693	843	
208	3rd Grade	673	843	plus toilet room
209	3rd Grade	833	843	
211	3rd Grade	797	843	
201	4th Grade	595	824	
210	4th Grade	677	824	plus toilet room
212	4th Grade	675	824	plus toilet room
225	4th Grade	716	824	plus toilet - inaccessible location
226	4th Grade	722	824	plus toilet - inaccessible location
312	5th Grade	709	931	
314	5th Grade	1005	931	
315	5th Grade	620	931	
315	5th Grade	761	931	
108	Kindergarten	676	1315	plus toilet
110	Kindergarten	677	1315	plus toilet
112	Kindergarten	675	1315	plus toilet
114	Kindergarten	1182	1315	plus toilet
116	Kindergarten	1242	1315	no toilet
313	Instructional Spec Ed 3-5	631		May need to become 5th grade next year
126	Instructional Spec Ed K-2	727		Plus toilet
109	Art	1143		plus kiln and storage
111	ESL	258		
117	Music	696		plus 3 practice rooms
118	Multipurpose	3306		Art and PE classes
123	Band/Orchestra	180		
125	Speech OT/PT	563		plus (2) offices and (1) toilet
317	LDR 4-5	337		
123D	Gym	3093		
206A	LDR	334		
216A	Media Center	3267		
216B	Computer Lab	556		Maybe to convert to Spec Ed 3-5
217B	Gifted	243		code-violating egress

STR ANALYSIS OF EHLERS 2016 REPORT
 NOTES (IN RED) FROM CABINET MEETING
 DISCUSSION/DECISIONS ON 3/1/16

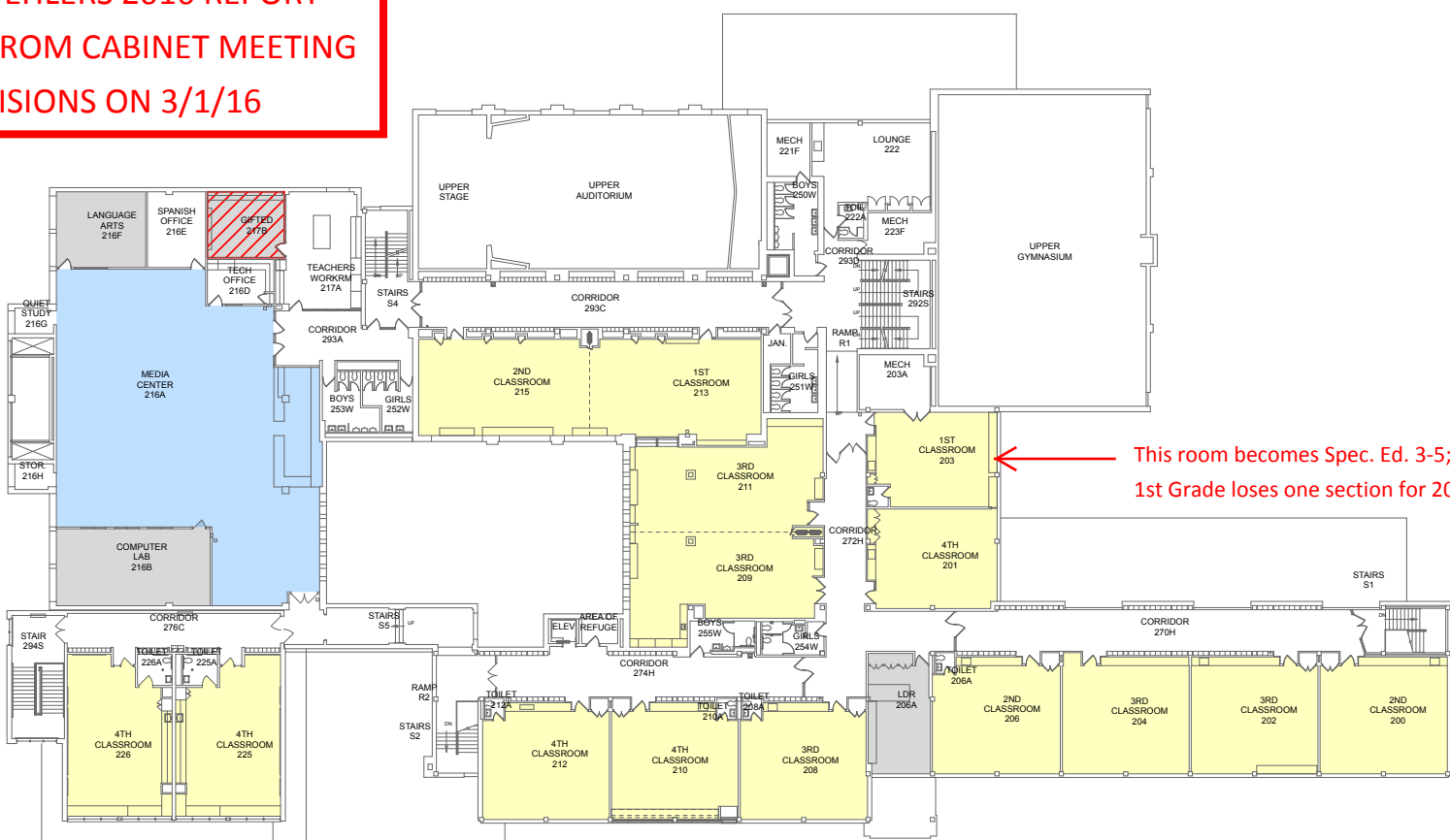
COLOR KEY:

- CLASSROOM (GRADE 1-5)
- PRE-K
EARLY CHILDHOOD
SELF-CONTAINED SPEC-ED
- KINDERGARTEN
- SPECIALIZED ROOM
- SUPPORT
- UNDERSIZED ROOM
REQUIRES RENOVATION
TO MEET USE



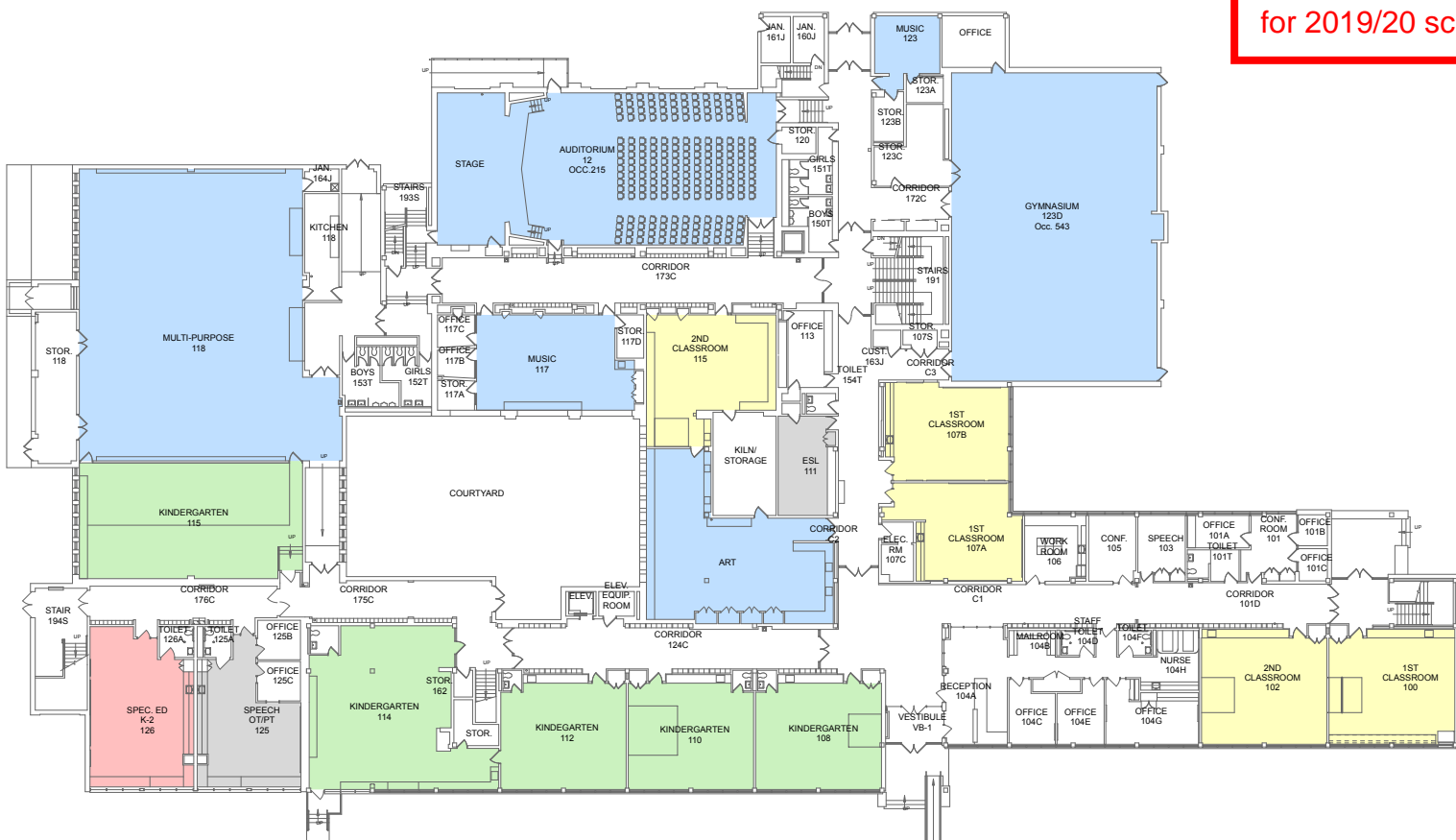
THIRD FLOOR PLAN

**STR ANALYSIS OF EHLERS 2016 REPORT
NOTES (IN RED) FROM CABINET MEETING
DISCUSSION/DECISIONS ON 3/1/16**



SECOND FLOOR PLAN

**STR and D97 to
confirm need for an
addition at this school
for 2019/20 school year**



FIRST FLOOR PLAN

LINCOLN ELEMENTARY SCHOOL



LONGFELLOW Elementary - Capacity Review

School Year	Kindergarten				Grade 1				Grade 2				Grade 3				Grade 4				Grade 5				Totals 1st thru 5th Grade		School Year
	Ehlers Projections	Clstrm Req'd Calculation (20/class)	Clstrm Required (20/class) No Aide	Actual Clstrms	Ehlers Projections	Clstrm Req'd Calculation (24/class)	Clstrm Required (24/class) No Aide	Actual Clstrms	Ehlers Projections	Clstrm Req'd Calculation (24/class)	Clstrm Required (24/class) No Aide	Actual Clstrms	Ehlers Projections	Clstrm Req'd Calculation (24/class)	Clstrm Required (24/class) No Aide	Actual Clstrms	Ehlers Projections	Clstrm Req'd Calculation (24/class)	Clstrm Required (24/class) No Aide	Actual Clstrms	Ehlers Projections	Clstrm Req'd Calculation (24/class)	Clstrm Required (24/class) No Aide	Actual Clstrms	Total 1-5 classrooms Required	Total 1-5 Classrooms Actual	
2016/17	88	4.4	5	5	101	4.2	5	4	93	3.9	4	5	115	4.8	5	4	104	4.3	5	5	109	4.5	5	4	24	22	2016/17
2017/18	88	4.4	5	5	97	4.0	5	4	102	4.3	5	5	96	4.0	4	4	122	5.1	6	5	105	4.4	5	4	25	22	2017/18
2018/19	86	4.3	5	5	98	4.1	5	4	98	4.1	5	5	105	4.4	5	4	102	4.3	5	5	123	5.1	6	4	26	22	2018/19
2019/20	91	4.6	5	5	94	3.9	4	4	98	4.1	5	5	101	4.2	5	4	112	4.7	5	5	102	4.3	5	4	24	22	2019/20
2020/21	91	4.6	5	5	100	4.2	5	4	95	4.0	4	5	101	4.2	5	4	107	4.5	5	5	112	4.7	5	4	24	22	2020/21

3/1/16
D97 intends to maintain 4 sections at 4th grade and utilize teaching aide(s) for 2016/17 school year

** Does not identify number of special needs students in self-contained classrooms

LEGEND

- Actual classrooms LESS THAN required classrooms
- Actual classrooms MORE THAN required classrooms
- Pre-K and ECC Classroom Capacity Analysis

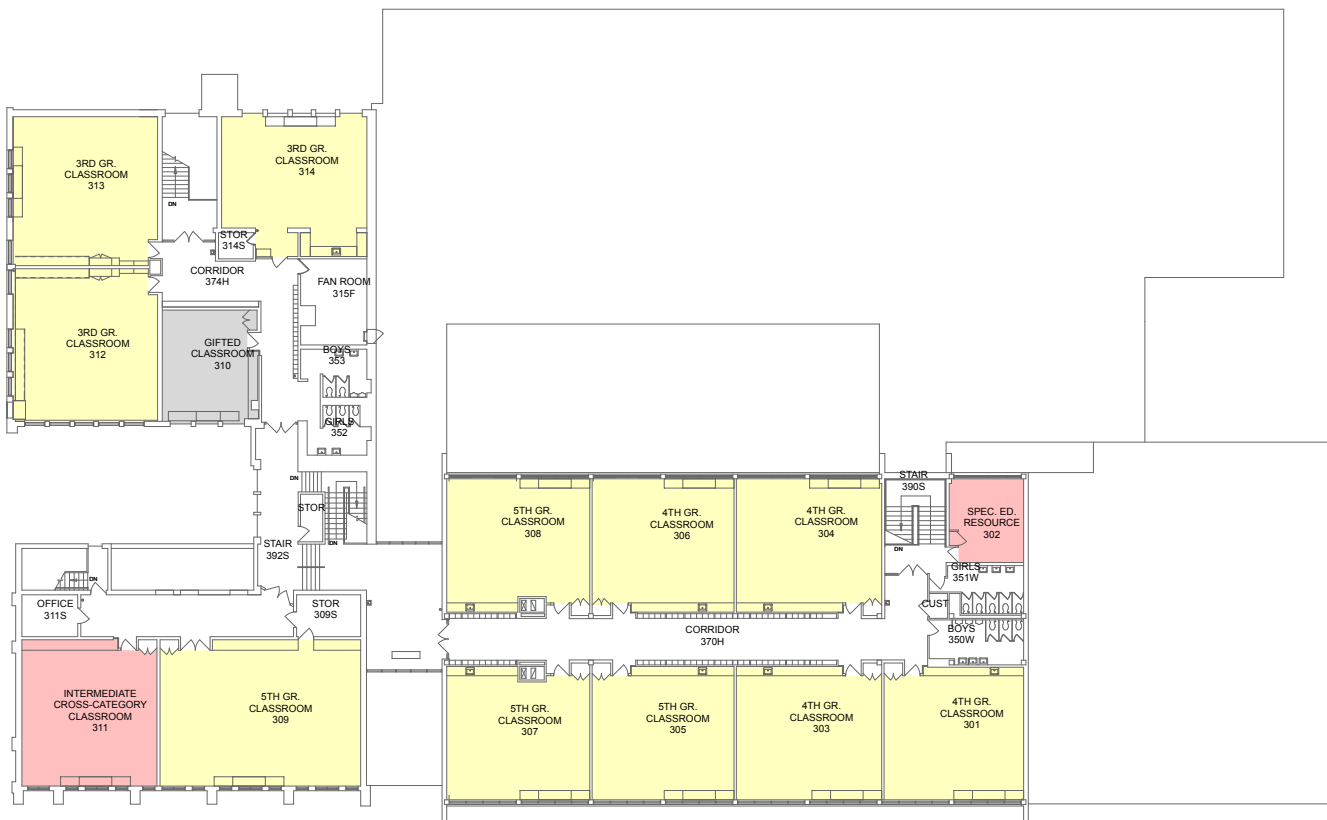
Pre-Kindergarten				
Ehlers Projections	Morning and Afternoon Sessions - 1/2 population	Clstrm Req'd Calculation (20/class Max)	Clstrm Required (20/class Max)	Actual Clstrms
114	57	2.85	3	3
114	57	2.85	3	3
114	57	2.85	3	3
114	57	2.85	3	3
114	57	2.85	3	3

LONGFELLOW Elementary - Room Size Comparison

Room No.	Grade Served	Square Footage (Gross)	Average SF in District (Gross)	Comments
201	1st Grade	969	809	
203	1st Grade	1007	809	
213	1st Grade	892	809	
214	1st Grade	910	809	
204	2nd Grade	880	856	Plus toilet room
205	2nd Grade	986	856	Plus toilet room
206	2nd Grade	863	856	Plus toilet room
208	2nd Grade	874	856	Plus toilet room
222A	2nd Grade	1612	856	
222B	3rd Grade	1572	843	
312	3rd Grade	1027	843	
313	3rd Grade	1022	843	
314	3rd Grade	958	843	
219	4th Grade	739	824	excludes hallway
301	4th Grade	880	824	
303	4th Grade	913	824	
304	4th Grade	913	824	
306	4th Grade	891	824	
305	5th Grade	891	931	
307	5th Grade	903	931	
308	5th Grade	903	931	
309	5th Grade	1388	931	
121A	Kindergarte	1553	1315	Plus toilet room
121C	Kindergarte	1343	1315	Plus toilet room
E103	Kindergarte	1341	1315	Plus toilet room
E104	Kindergarte	1514	1315	Plus toilet room
212	Kindergarte	1222	1315	Plus toilet room
120D	Pre-Kinderg	705		Plus toilet room
120F	Pre-Kinderg	550		Shares toilet with 120D
120G	Pre-Kinderg	670		Plus toilet room
207	Primary Cross-Cat. SE	872		Plus toilet room
311	Intermediate Cross-Cat. SE	953		
110	Art	1457		plus Kiln and storage
310	Gifted	493		
E100	Gymnasium	4012		
E106	Language	434		
221A	Media Cen	2838		
E122	MultiPurpos	3080		Confirm size can accommodate population and scheduling
113	Music	976		access is awkward
220	Spanish	592		

STR ANALYSIS OF EHLERS 2016 REPORT NOTES (IN RED) FROM CABINET MEETING DISCUSSION/DECISIONS ON 3/1/16

- COLOR KEY:**
- CLASSROOM (GRADE 1-5)
 - PRE-K
EARLY CHILDHOOD
SELF-CONTAINED SPEC-ED
 - KINDERGARTEN
 - SPECIALIZED ROOM
 - SUPPORT
 - UNDERSIZED ROOM
REQUIRES RENOVATION
TO MEET USE



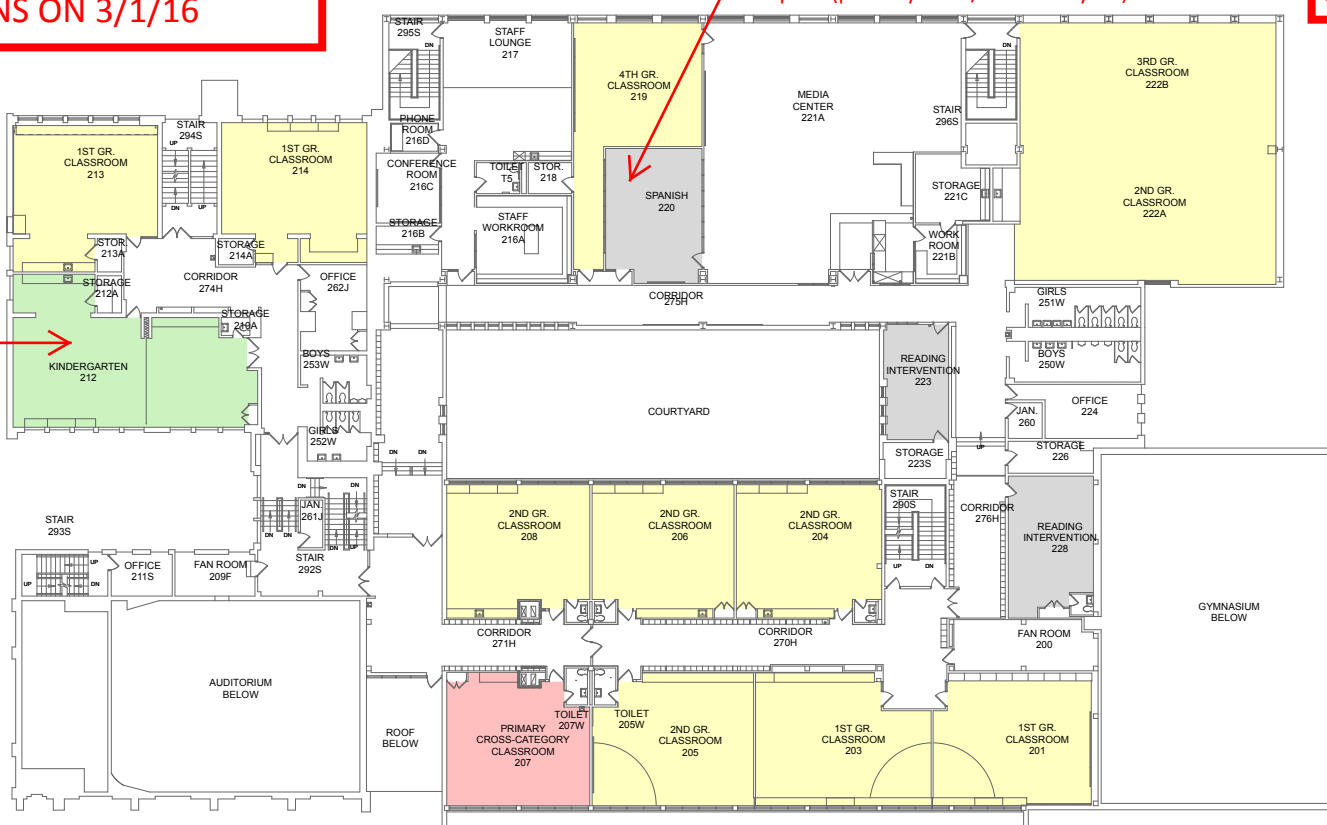
THIRD FLOOR PLAN

**STR ANALYSIS OF EHLERS 2016 REPORT
NOTES (IN RED) FROM CABINET MEETING
DISCUSSION/DECISIONS ON 3/1/16**

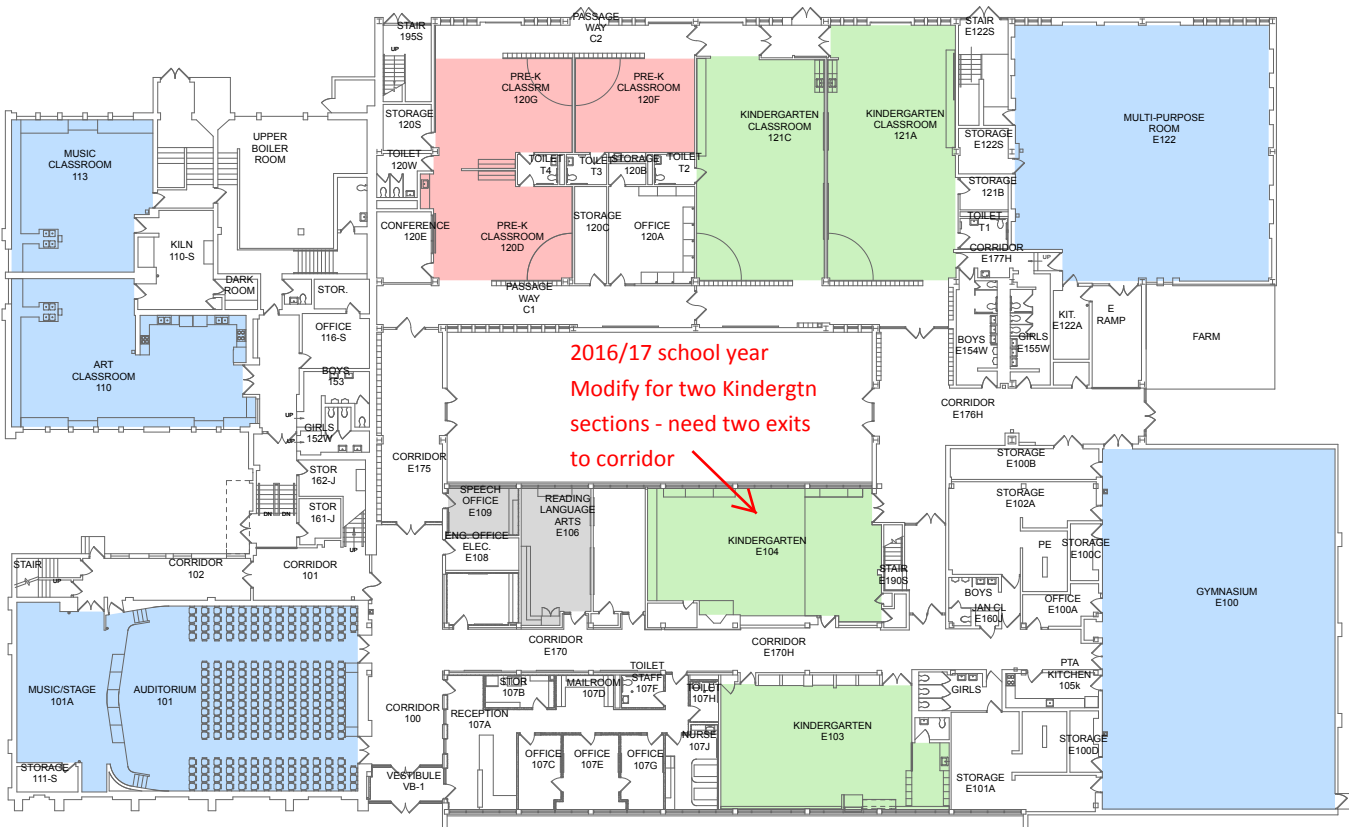
**STR and D97 to plan
for an addition at this
school for 2018/19
school year**

Potential for Spanish to move
to a cart of additional instructional
space (possibly 2017/18 school year)

2016/17 school year
This room becomes
1st Grade Classroom -
Kindergarten moves
to share Room E104



SECOND FLOOR PLAN



FIRST FLOOR PLAN

LONGFELLOW ELEMENTARY SCHOOL



MANN Elementary - Capacity Review

School Year	Kindergarten				Grade 1				Grade 2				Grade 3				Grade 4				Grade 5				Totals 1st thru 5th Grade		School Year
	Ehlers Projections	Clstrm Req'd Calculation (20/class)	Clstrm Required (20/class) No Aide	Actual Clstrms	Ehlers Projections	Clstrm Req'd Calculation (24/class)	Clstrm Required (24/class) No Aide	Actual Clstrms	Ehlers Projections	Clstrm Req'd Calculation (24/class)	Clstrm Required (24/class) No Aide	Actual Clstrms	Ehlers Projections	Clstrm Req'd Calculation (24/class)	Clstrm Required (24/class) No Aide	Actual Clstrms	Ehlers Projections	Clstrm Req'd Calculation (24/class)	Clstrm Required (24/class) No Aide	Actual Clstrms	Ehlers Projections	Clstrm Req'd Calculation (24/class)	Clstrm Required (24/class) No Aide	Actual Clstrms	Total 1-5 classrooms Required	Total 1-5 Classrooms Actual	
2016/17	72	3.6	4	4	77	3.2	4	4	73	3.0	4	4	84	3.5	4	4	71	3.0	3	4	69	2.9	3	4	18.0	20	2016/17
2017/18	72	3.6	4	4	75	3.1	4	4	76	3.2	4	4	73	3.0	4	4	81	3.4	4	4	71	3.0	3	4	19.0	20	2017/18
2018/19	70	3.5	4	4	75	3.1	4	4	74	3.1	4	4	76	3.2	4	4	71	3.0	3	4	81	3.4	4	4	19.0	20	2018/19
2019/20	73	3.7	4	4	73	3.0	4	4	74	3.1	4	4	74	3.1	4	4	73	3.0	4	4	71	3.0	3	4	19.0	20	2019/20
2020/21	73	3.7	4	4	77	3.2	4	4	72	3.0	3	4	74	3.1	4	4	72	3.0	3	4	73	3.0	4	4	18.0	20	2020/21

** Does not identify number of special needs students in self-contained classrooms

LEGEND

- Actual classrooms LESS THAN required classrooms
- Actual classrooms MORE THAN required classrooms
- Unclear of class size requirements

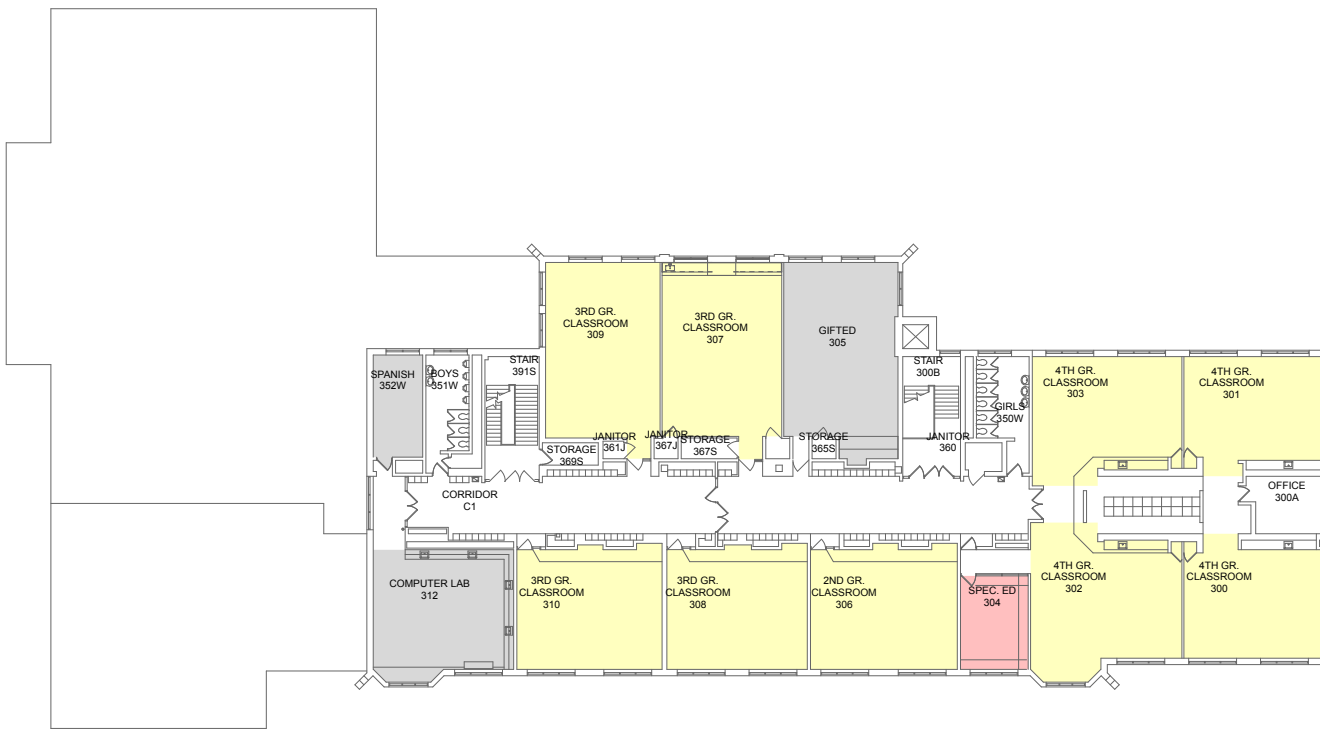
MANN Elementary - Room Size Comparison

Room No.	Grade Served	Square Footage (Gross)	Average SF in District (Gross)	Comments
108	1st Grade	828	809	Plus toilet room
110	1st Grade	784	809	Plus toilet room
116A	1st Grade	707	809	
116B	1st Grade	725	809	
208	2nd Grade	977	856	
212	2nd Grade	901	856	Plus toilet room
306	2nd Grade	724	856	
210	2nd Grade	944	856	
307	3rd Grade	872	843	
308	3rd Grade	702	843	
309	3rd Grade	856	843	
310	3rd Grade	724	843	
300	4th Grade	622	824	
301	4th Grade	640	824	
302	4th Grade	817	824	
303	4th Grade	734	824	
216A	5th Grade	1032	931	
216B	5th Grade	1044	931	
216C	5th Grade	1041	931	
216D	5th Grade	1068	931	
104	Kindergarten	958	1315	Plus toilet room
107	Kindergarten	1372	1315	Plus toilet room
114A	Kindergarten	852	1315	These rooms share on large room. Confirm this is acceptable - Principal has not indicated a problem (plus toilet)
114B	Kindergarten	650	1315	
218	Spec Ed Resource	601		
304	Special Ed	256		
103	Gymnasium	3553		
109	Art	934		
112	Music	938		
118	Cafeteria	4307		
201	Library	3170		
305	Gifted	889		
312	Computer Lab	720		
352W	Spanish	212		

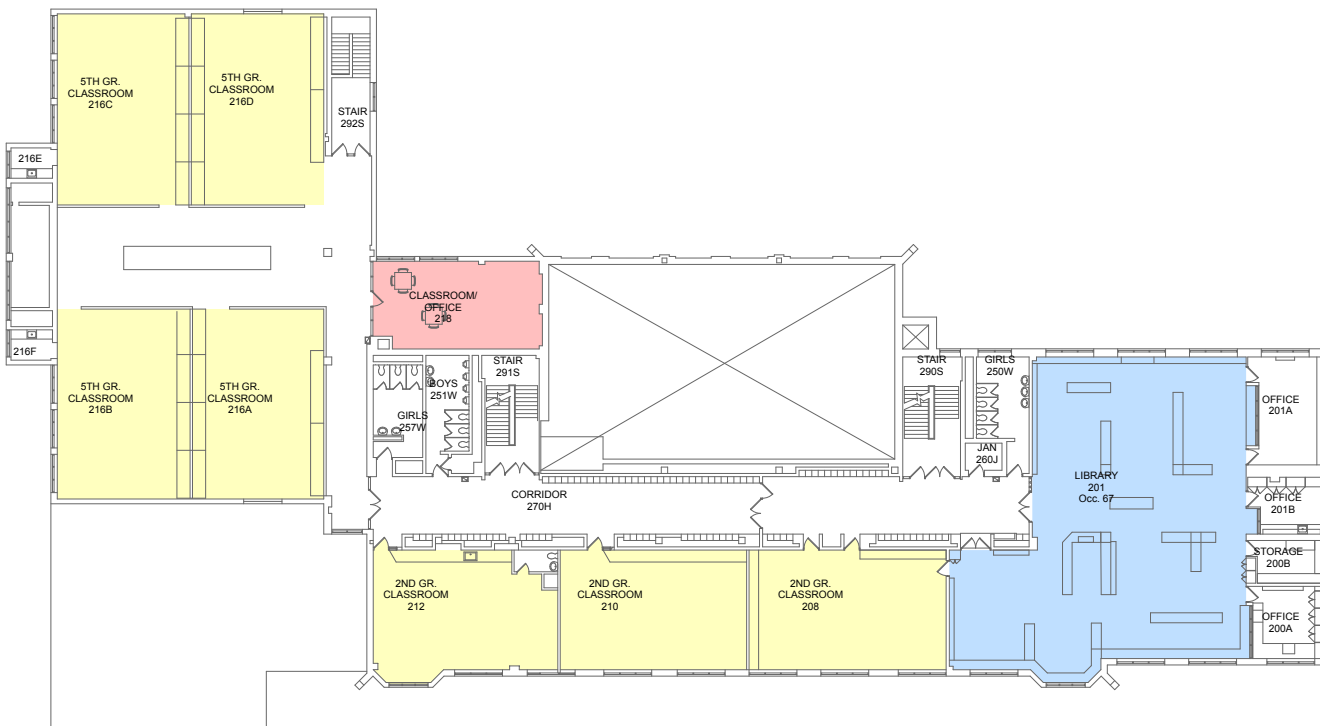
STR ANALYSIS OF EHLERS 2016 REPORT
NOTES (IN RED) FROM CABINET MEETING
DISCUSSION/DECISIONS ON 3/1/16

**STR ANALYSIS OF EHLERS 2016 REPORT
 NOTES (IN RED) FROM CABINET MEETING
 DISCUSSION/DECISIONS ON 3/1/16**

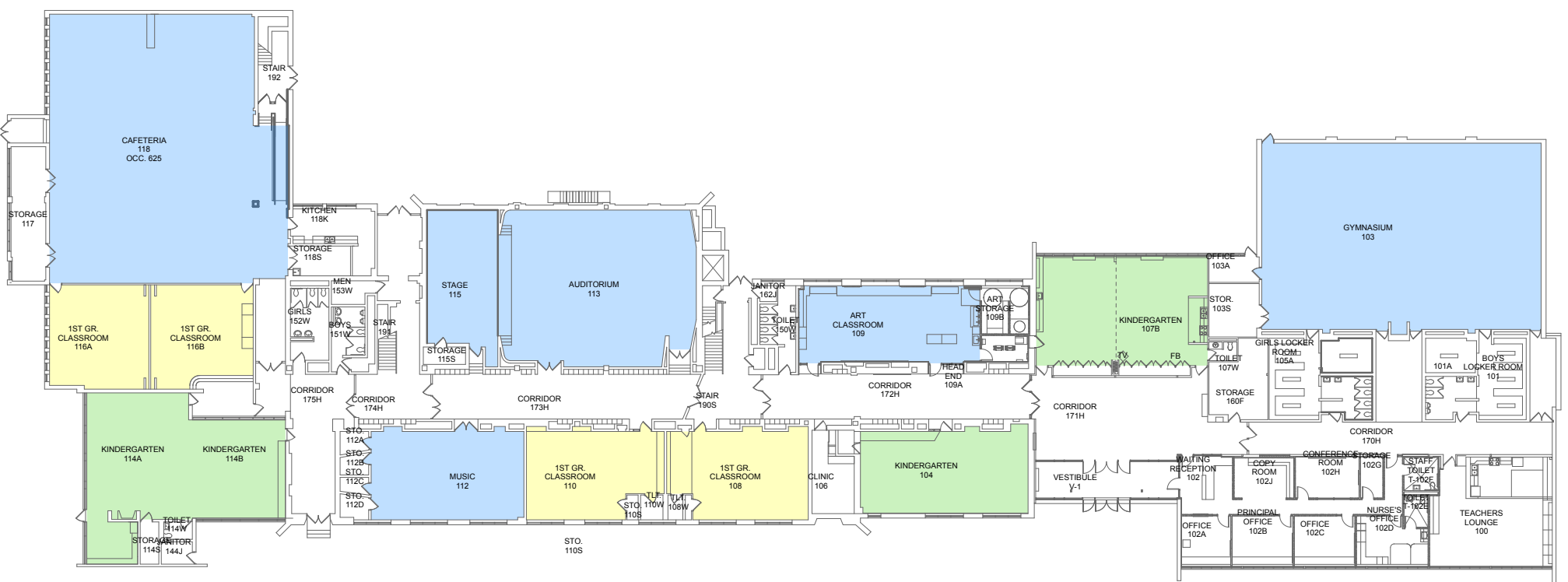
- COLOR KEY:**
- CLASSROOM (GRADE 1-5)
 - PRE-K
EARLY CHILDHOOD
SELF-CONTAINED SPEC-ED
 - KINDERGARTEN
 - SPECIALIZED ROOM
 - SUPPORT
 - UNDERSIZED ROOM
REQUIRES RENOVATION
TO MEET USE



THIRD FLOOR PLAN



SECOND FLOOR PLAN



FIRST FLOOR PLAN

MANN ELEMENTARY SCHOOL




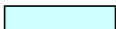
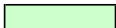
WHITTIER Elementary - Capacity Review

3/1/16
D97 intends to maintain 3 sections at 4th grade and utilize teaching aide(s) for 2016/17 school year

School Year	Kindergarten				Grade 1				Grade 2				Grade 3				Grade 4				Grade 5				Totals 1st thru 5th Grade		School Year
	Ehlers Projections	Clstrm Req'd Calculation (20/class)	Clstrm Required (20/class) No Aide	Actual Clstrms	Ehlers Projections	Clstrm Req'd Calculation (24/class)	Clstrm Required (24/class) No Aide	Actual Clstrms	Ehlers Projections	Clstrm Req'd Calculation (24/class)	Clstrm Required (24/class) No Aide	Actual Clstrms	Ehlers Projections	Clstrm Req'd Calculation (24/class)	Clstrm Required (24/class) No Aide	Actual Clstrms	Ehlers Projections	Clstrm Req'd Calculation (24/class)	Clstrm Required (24/class) No Aide	Actual Clstrms	Ehlers Projections	Clstrm Req'd Calculation (24/class)	Clstrm Required (24/class) No Aide	Actual Clstrms	Total 1-5 classrooms Required	Total 1-5 Classrooms Actual	
2016/17	56	2.8	3	3	61	2.5	3	3	65	2.7	3	3	53	2.2	3	3	73	3.0	4	3	69	2.9	3	3	16.6	15	2016/17
2017/18	56	2.8	3	3	59	2.5	3	3	61	2.5	3	3	67	2.8	3	3	52	2.2	3	3	69	2.9	3	3	15.0	15	2017/18
2018/19	55	2.8	3	3	59	2.5	3	3	58	2.4	3	3	62	2.6	3	3	66	2.8	3	3	51	2.1	3	3	15.0	15	2018/19
2019/20	58	2.9	3	3	58	2.4	3	3	59	2.5	3	3	60	2.5	3	3	61	2.5	3	3	65	2.7	3	3	15.0	15	2019/20
2020/21	57	2.9	3	3	61	2.5	3	3	57	2.4	3	3	60	2.5	3	3	59	2.5	3	3	60	2.5	3	3	15.0	15	2020/21

** Does not identify number of special needs students in self-contained classrooms

Early Childhood - Pre-Kindergarten				
Ehlers Projections	Morning and Afternoon Sessions - 1/2 poplulation	Clstrm Req'd Calculation (10/class)	Clstrm Required (10/class)	Actual Clstrms
41	20.5	2.1	3	4
41	20.5	2.1	3	4
41	20.5	2.1	3	4
41	20.5	2.1	3	4
41	20.5	2.1	3	4

LEGEND
 Actual classrooms LESS THAN required classrooms
 Actual classrooms MORE THAN required classrooms
 Pre-K and ECC Classroom Capacity Analysis

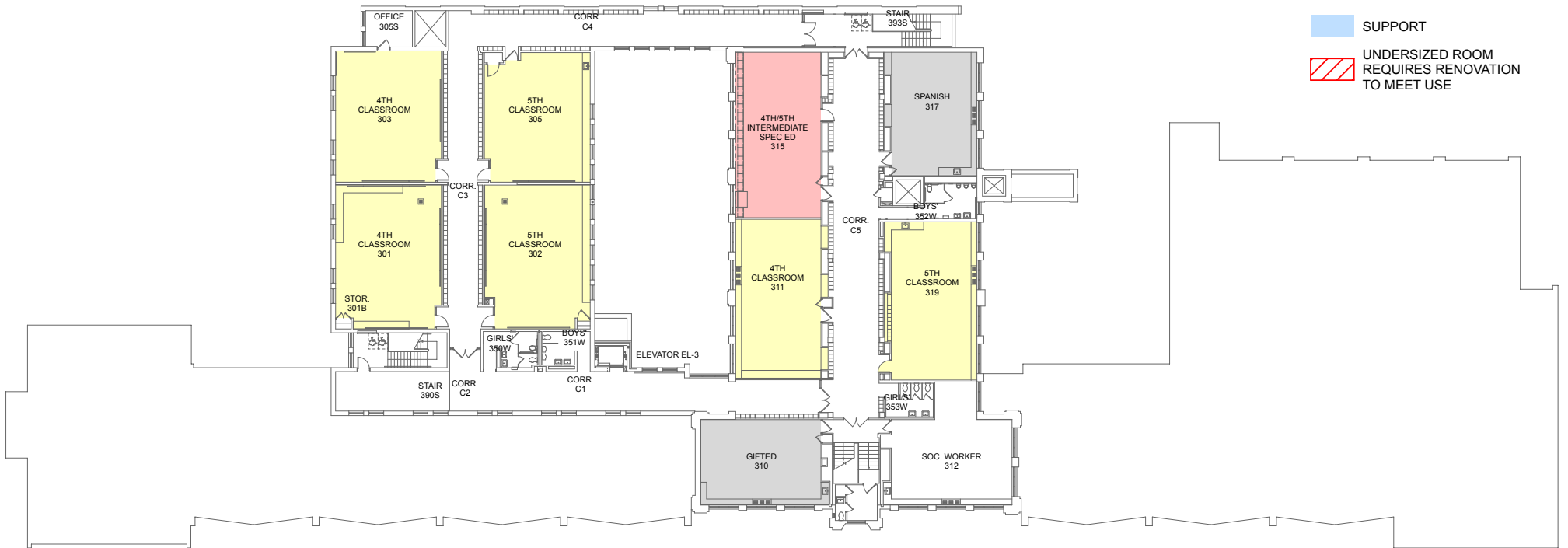
WHITTIER Elementary - Room Size Comparison

Room No.	Grade Served	Square Footage (Gross)	Average SF in District (Gross)	Comments
104	1st Grade	779	809	plus toilet
111	1st Grade	812	809	plus toilet
113	1st Grade	915	809	plus toilet
102	2nd Grade	773	856	plus toilet
200	2nd Grade	799	856	
202	2nd Grade	799	856	
204	3rd Grade	800	843	
206	3rd Grade	799	843	
214	3rd Grade	795	843	
301	4th Grade	1016	824	
303	4th Grade	927	824	
311	4th Grade	900	824	
302	5th Grade	991	931	
305	5th Grade	878	931	
319	5th Grade	965	931	
106	Kindergarten	771	1315	plus toilet
117	Kindergarten	722	1315	shares toilet with 119
119	Kindergarten	980	1315	plus toilet
112	EC Classroom	610		plus toilet
114	EC Classroom	763		plus toilet
118A	EC Classroom	741		plus toilet
118B	EC Classroom	840		Shares toilet with 118A
208	Spec. Ed	709		
212	Spec. Ed	709		
315	Spec Ed 4th/5th	959		
100A	Community Room	1447		plus kitchen, toilet, storage
218	Art	1453		Plus kiln and storage
201C	Computer Lab	862		
310	Gifted	709		
221	Gymnasium	3980		
219	Language Arts	713		
201	Media Center	3218		
103	MultiPurpose	2514		

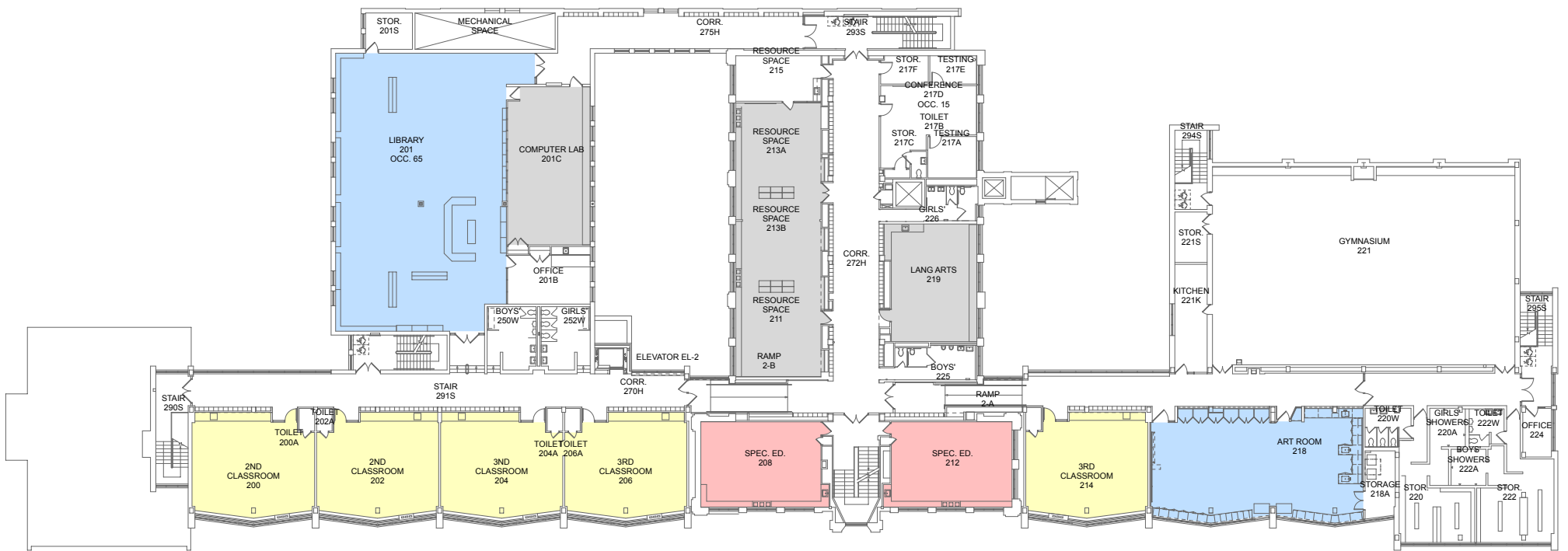
STR ANALYSIS OF EHLERS 2016 REPORT NOTES (IN RED) FROM CABINET MEETING DISCUSSION/DECISIONS ON 3/1/16

**STR ANALYSIS OF EHLERS 2016 REPORT
 NOTES (IN RED) FROM CABINET MEETING
 DISCUSSION/DECISIONS ON 3/1/16**

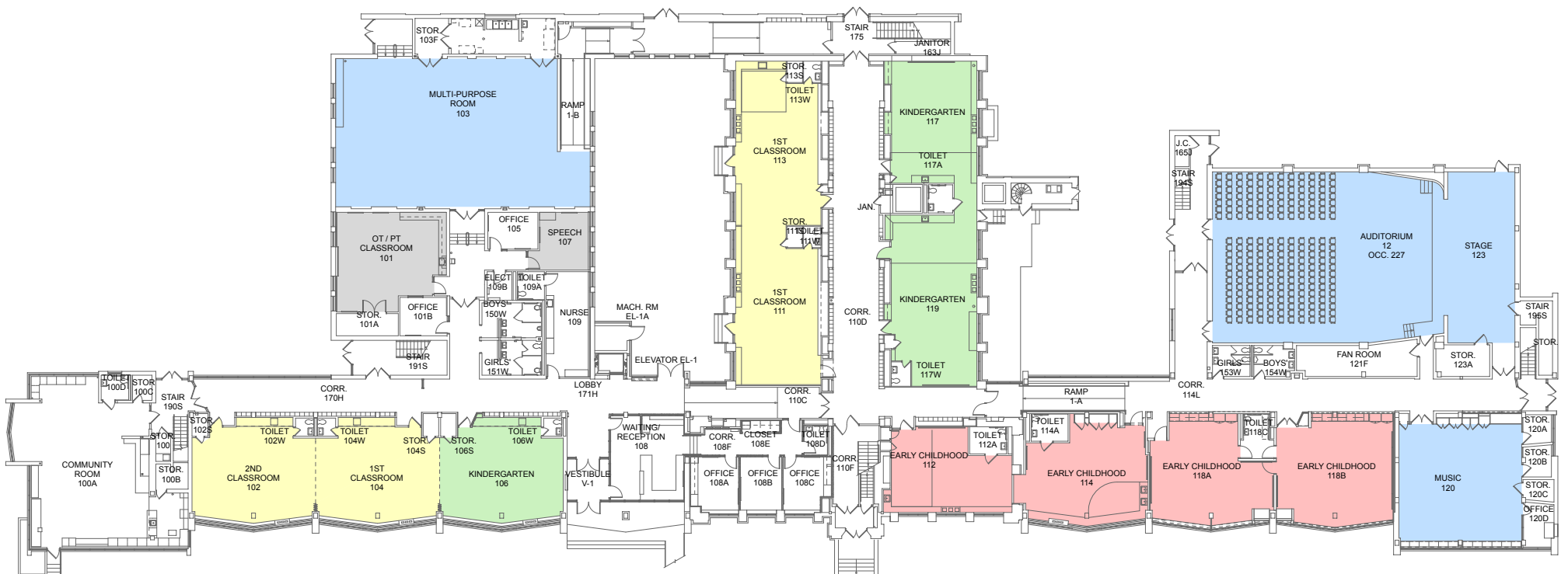
- COLOR KEY:**
- CLASSROOM (GRADE 1-5)
 - PRE-K
EARLY CHILDHOOD
SELF-CONTAINED SPEC-ED
 - KINDERGARTEN
 - SPECIALIZED ROOM
 - SUPPORT
 - UNDERSIZED ROOM
REQUIRES RENOVATION
TO MEET USE



THIRD FLOOR PLAN



SECOND FLOOR PLAN



FIRST FLOOR PLAN

WHITTIER ELEMENTARY SCHOOL

