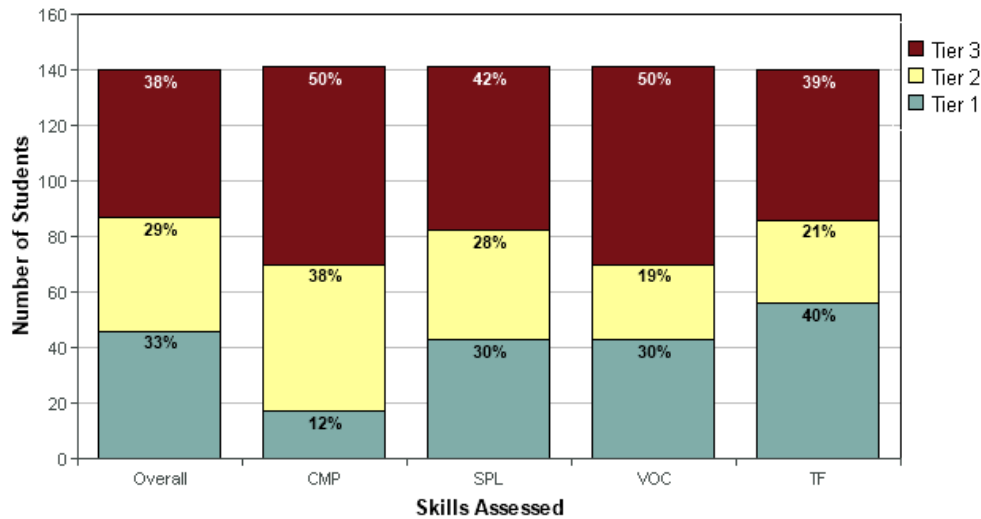
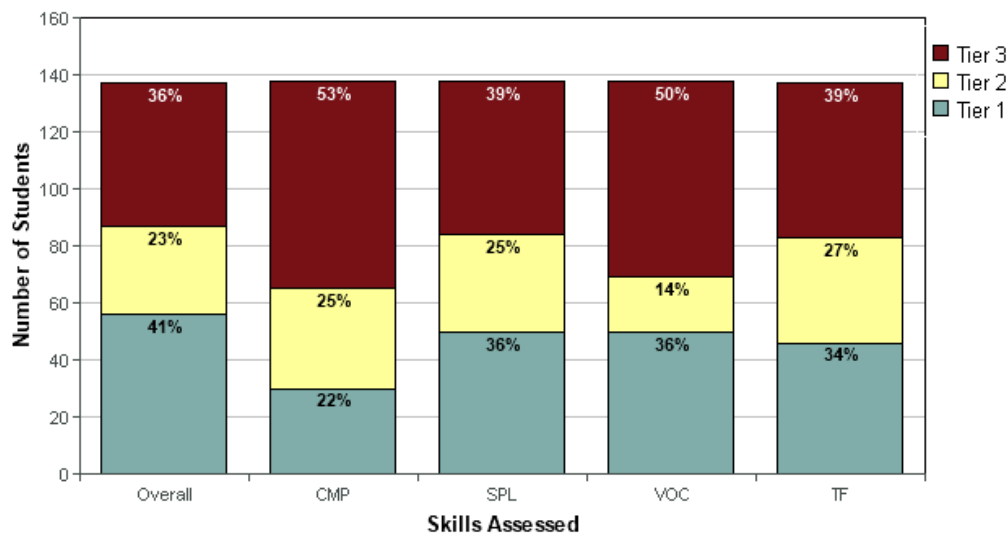


**ISIP-Literacy Assessment**

**9th Grade - September 2017**

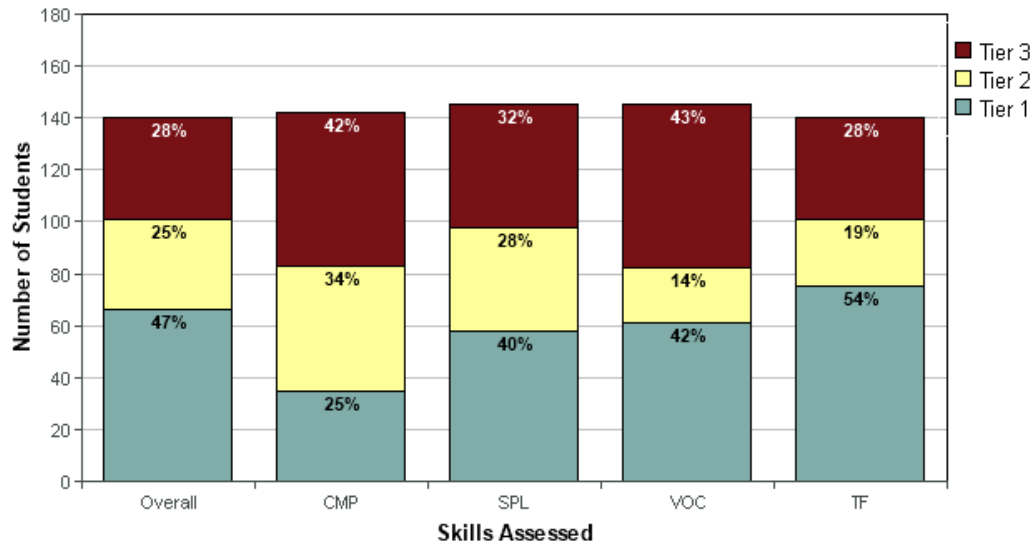


**9th Grade - January 2018**

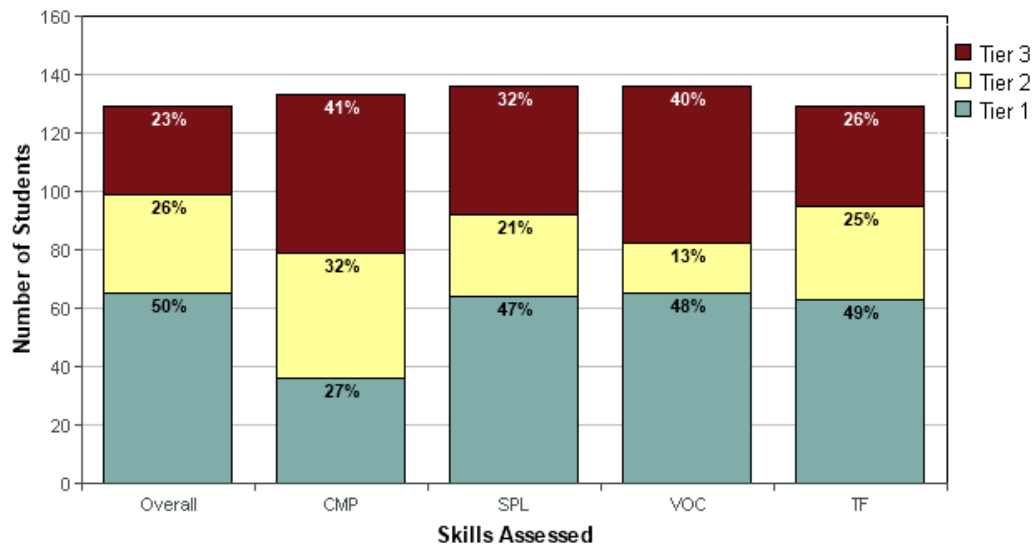


Our 9<sup>th</sup> grade benchmark data shows that we are moving student from tier 2 into tier 1. It also shows that our Tier 3 student numbers are remaining fairly constant. We did see good growth in comprehension, which is one of our priority areas. We have spent the last few months doing our extended Wednesday PD on literacy strategies. Our SLT will now design an ongoing plan for implementation and sustainability of those strategies across all classrooms.

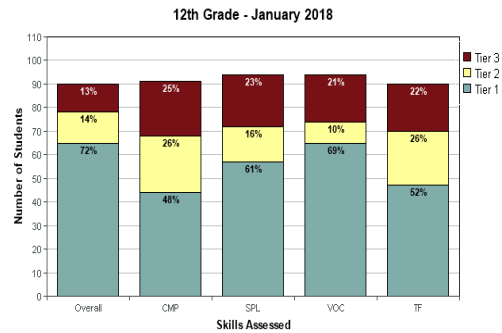
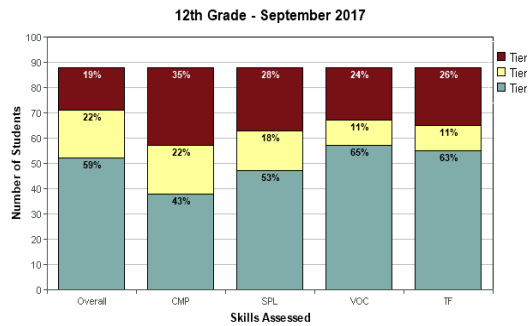
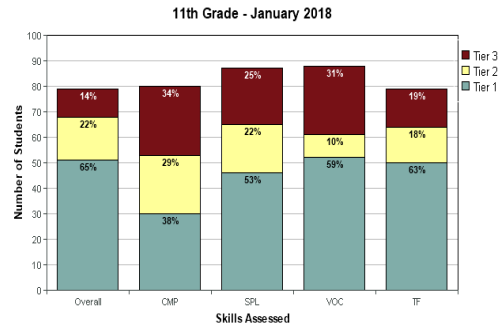
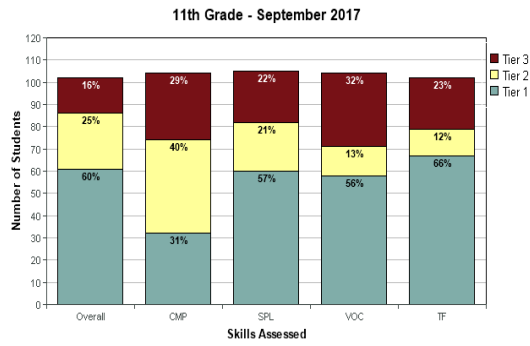
**10th Grade - September 2017**



**10th Grade - January 2018**



Our 10<sup>th</sup> grade data shows similar patterns as our 9<sup>th</sup> grade. There is a small increase in students coring in the Tier 1 range, but our Tier 3 remains stagnant.



Our 11<sup>th</sup> and 12<sup>th</sup> grade numbers remained almost the same, but based on how overall reading is calculated we did see growth in both grades. The 12<sup>th</sup> grade saw a 12% increase in students scoring in the Tier 1 range on their overall reading score.

## Attendance

Below is the attendance staff and student attendance for January 2018.

Classified Staff: 92.6%

Certified Staff: 84.82%

### Student Attendance January 2018

#### School: Browning High School Calendar: 17-18 Browning High School

	Grade	Student Membership		Absent Days	Present Days	ADM	ADA	Unexcused Absences		Percent In Attendance
		Count	Days					Days	Avg. Daily	
	09	148	5786	739.34	5046.66	144.67	126.15	675.49	16.95	87.22%
	10	158	6112	638.53	5473.47	152.83	136.85	584.89	14.66	89.55%
	11	133	5222	478.21	4743.79	130.56	118.62	421.14	10.51	90.84%
	12	138	5264	325.99	4938.01	131.64	123.44	293.60	7.38	93.81%
<b>Total</b>	<b>4</b>	<b>577</b>	<b>22384</b>	<b>2182.07</b>	<b>20201.93</b>	<b>559.70</b>	<b>505.06</b>	<b>1975.12</b>	<b>49.50</b>	<b>90.25%</b>

For our 2 days of final exams the attendance rates were:

**School: Browning High School Calendar: 17-18 Browning High School**

Grade	Student Membership		Absent Days	Present Days	ADM	ADA	Unexcused Absences		Percent In Attendance
	Count	Days					Days	Avg. Daily	
09	141	141	10.09	130.91	141.00	130.91	8.88	8.88	92.84%
10	153	153	9.08	143.92	153.00	143.92	9.08	9.08	94.07%
11	128	128	5.62	122.38	128.00	122.38	4.18	4.18	95.61%
12	132	132	4.11	127.89	132.00	127.89	2.62	2.62	96.89%
<b>Total</b>	<b>4</b>	<b>554</b>	<b>28.90</b>	<b>525.10</b>	<b>554.00</b>	<b>525.10</b>	<b>24.76</b>	<b>24.76</b>	<b>94.78%</b>

**School: Browning High School Calendar: 17-18 Browning High School**

Grade	Student Membership		Absent Days	Present Days	ADM	ADA	Unexcused Absences		Percent In Attendance
	Count	Days					Days	Avg. Daily	
09	142	142	9.92	132.08	142.00	132.08	9.39	9.39	93.01%
10	153	153	12.74	140.26	153.00	140.26	12.07	12.07	91.67%
11	128	128	5.56	122.44	128.00	122.44	4.75	4.75	95.66%
12	132	132	5.19	126.81	132.00	126.81	4.78	4.78	96.07%
<b>Total</b>	<b>4</b>	<b>555</b>	<b>33.41</b>	<b>521.59</b>	<b>555.00</b>	<b>521.59</b>	<b>30.99</b>	<b>30.99</b>	<b>93.98%</b>

**Activities**

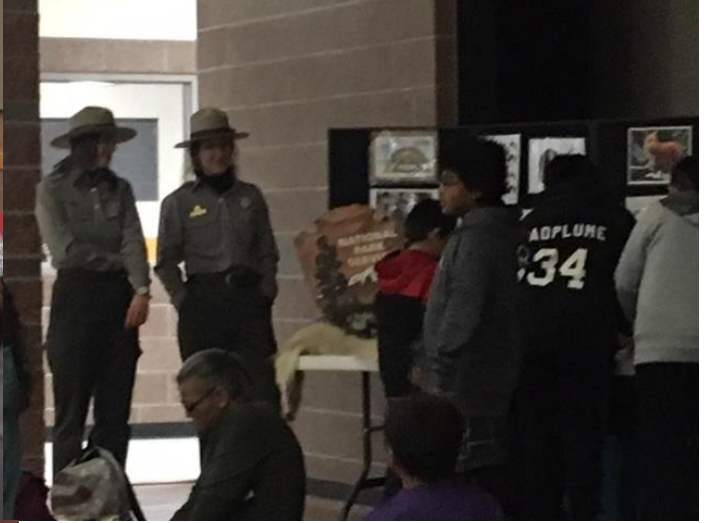
The Science Department hosted their literacy night in January. The students in the science club, along with their advisor, Melody Small, visited the elementary schools to let students know about the event. Their efforts paid off as we had 145 parents and 233 students attend. Multiple universities and other agencies attended and presented, led activities for those who came to participate. The science club was involved in helping students with science projects as well as helping to organize the event. We fed those who came a meal of hot dogs and chips along with cake for desert. The science department also gave away many door prizes throughout the night. The event was a success.















Browning High School staff lead by the building MBI team has been working hard to implement the MBI program. We have developed and implemented many of the Tier 1 components of the MBI program. Although we have a long way to go we have made lots of progress. In comparison to the previous year our discipline data has been continuously lower.

In the month of November we had our staff do the Self Assessment Survey. The results are on the SAS School-wide System Subscale Graph. We are moving in the right direction in all areas. Our self assessment result for implementation was 69% which is very close to the results of the TFI done by our consultants also in the month of November. The results for that are included on the SWPBISTFI2.1. We have improved from 50% implementation to 77% implementation. We will be having another TFI in April and may possibly be eligible to apply for a Bronze Award.

With the assistance from the Honor Your Life program we will soon be opening our student store. The store will include many items that the students voted on. We are very excited about the progress that we are making at BHS!