

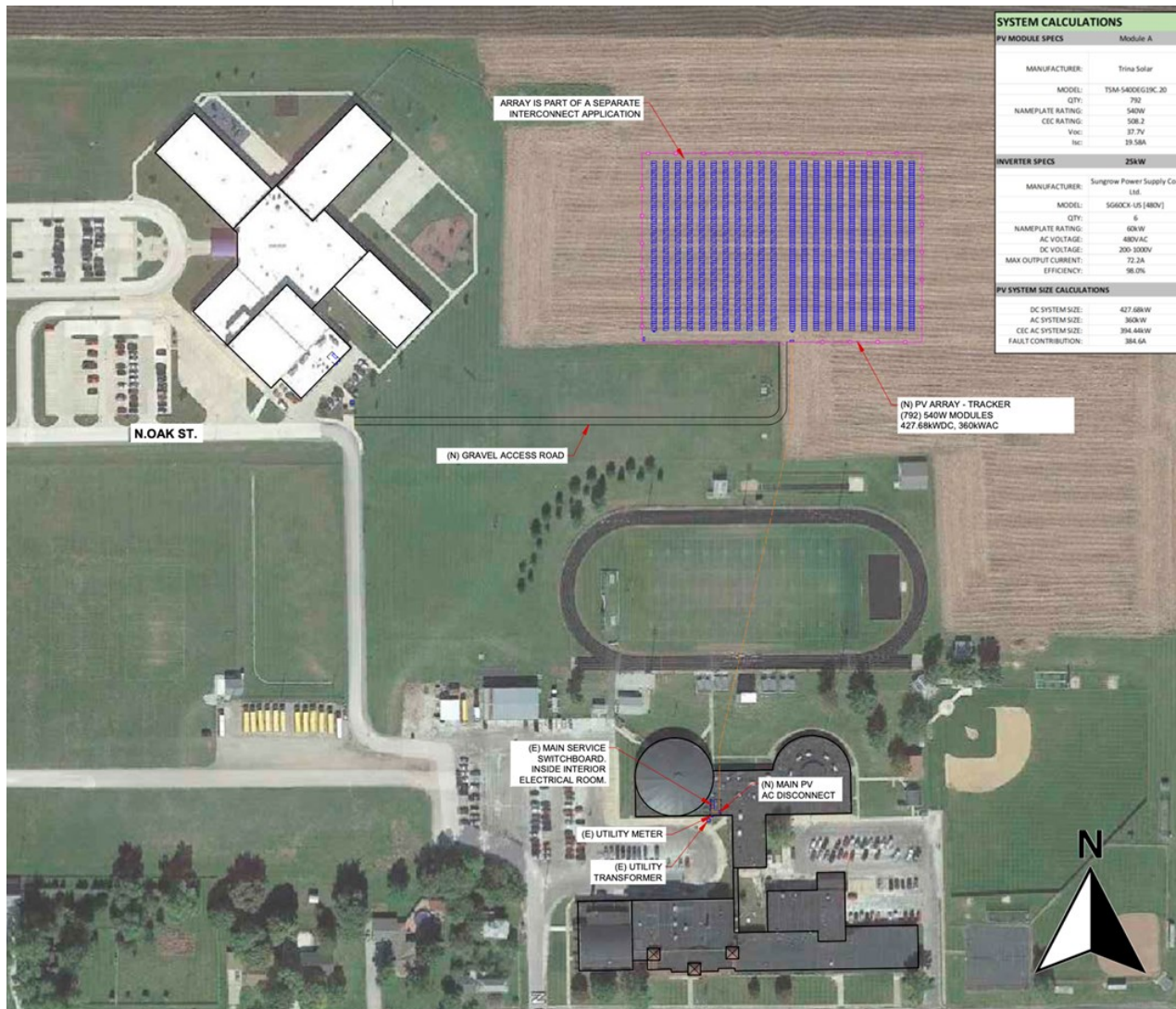


Energy Procurement Proposal

Prepared For
 New Berlin CUSD 16
 Jill Larson
 Superintendent

Prepared By
 Clean Energy Design Group
 888-961-4750
 info@cedg.us

9/1/2022



Project Summary

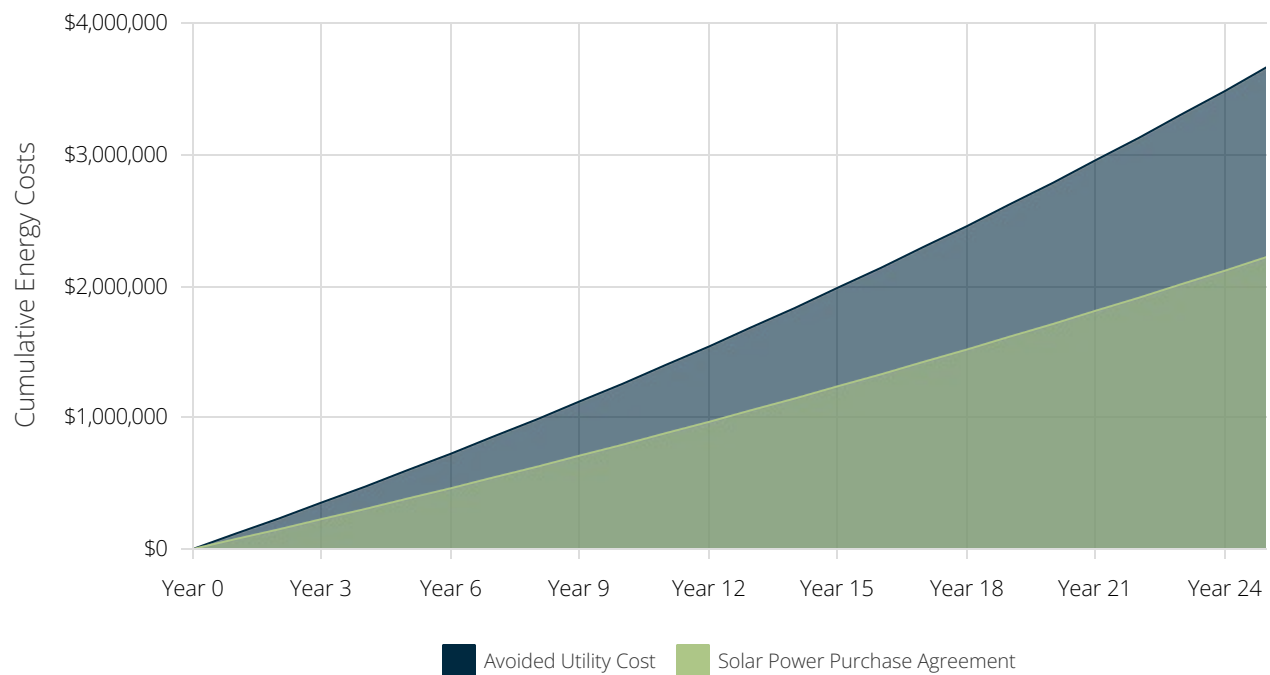
Payment Options	Solar Power Purchase Agreement
Upfront Payment, Engineering, and Construction	\$0
Solar Rate per kWh Yr-1	0.055
Solar Rate Annual Escalator (Fixed)	2%
Utility Rate Annual Inflation (Estimate)	2.5%
Net Savings End-of-Term	\$1,444,418
System Removal Cost	\$0

Combined Solar PV Rating

Power Rating: 855,360 W-DC

Power Rating: 745,070 W-AC-CEC

Cumulative Energy Costs By Payment Option



Solar Power Purchase Agreement

Assumptions and Key Financial Metrics

Solar Rate per kWh Year-1	0.055	Solar Rate Annual Escalator (Fixed)	2%	Utility Annual Inflation (Estimate)	2.5%
Solar Panel Annual Degradation	0.50%				

Years	PPA Payments	Electric Bill Savings	Total Cash Flow	Cumulative Cash Flow
Upfront	-	-	-	-
1	-\$74,174	\$114,941	\$40,767	\$40,767
2	-\$75,280	\$117,226	\$41,946	\$82,713
3	-\$76,399	\$119,552	\$43,153	\$125,866
4	-\$77,534	\$121,922	\$44,388	\$170,254
5	-\$78,683	\$124,336	\$45,653	\$215,907
6	-\$79,847	\$126,794	\$46,947	\$262,854
7	-\$81,026	\$129,297	\$48,271	\$311,125
8	-\$82,221	\$131,847	\$49,626	\$360,751
9	-\$83,431	\$134,443	\$51,012	\$411,763
10	-\$84,656	\$137,086	\$52,430	\$464,192
11	-\$85,897	\$139,778	\$53,880	\$518,073
12	-\$87,154	\$142,518	\$55,364	\$573,436
13	-\$88,427	\$145,308	\$56,881	\$630,318
14	-\$89,716	\$148,148	\$58,433	\$688,750
15	-\$91,021	\$151,040	\$60,020	\$748,770
16	-\$92,342	\$153,984	\$61,642	\$810,412
17	-\$93,680	\$156,980	\$63,301	\$873,713
18	-\$95,034	\$160,030	\$64,996	\$938,709
19	-\$96,405	\$163,135	\$66,730	\$1,005,439
20	-\$97,793	\$166,294	\$68,502	\$1,073,940
21	-\$99,197	\$169,510	\$70,313	\$1,144,253
22	-\$100,619	\$172,782	\$72,163	\$1,216,416
23	-\$102,058	\$176,113	\$74,054	\$1,290,470
24	-\$103,515	\$179,501	\$75,987	\$1,366,457
25	-\$104,988	\$182,949	\$77,961	\$1,444,418
Totals:	-\$2,221,096	\$3,665,514	\$1,444,418	-