
DESCRIPTOR TERM

District 370 Policy
File Code: 8.21

Students

Homedale Middle School Student Handbook	1996	6-17-96
Amended & Adopted	1997	9-15-97
Amended & Adopted	1998	4-13-98
Amended & Adopted	1999	6-14-99
Amended & Adopted	2000	4-10-00
Amended & Adopted	2002	5-13-02
Amended & Adopted	2003	6-9-03
Amended & Adopted	2010	7-12-10
Amended & Adopted	2013	10-14-13
Amended & Adopted	2014	6-9-14
Amended & Adopted	2014	7-14-14
Amended & Adopted	2015	7-13-15
Amended & Adopted	2016	5-9-16
Amended	2017	

Policy as attached.



HOMEDALE MIDDLE SCHOOL

Student Handbook

This document provides all school policies and procedures for parents and students.

20167-20178

HOMEDALE MIDDLE SCHOOL

3437 Johnstone Road

Homedale, Idaho 83628

Telephone: (208) 337-5780

Fax: (208) 337-5782

Educating students daily to be successful citizens tomorrow!

Mission Statement:

Our mission is to create a safe and caring environment in which all students are empowered to excel academically, build mutual respect, and develop the skills necessary to become responsible individuals with integrity. As a result, our students will be prepared for a successful transition to the high school program.

Vision Statement:

Everything we do is in the best interest of our students – we inspire them to dream toward a better future, and we equip them with the skills necessary to achieve those dreams.

Purpose:

This information is intended to help you understand how to be a successful student at Homedale Middle School.

Student Handbook:

Following this page are the policies and procedures at Homedale Middle School. Please review this document with your parents/guardians, then sign and return this page to your advisory teacher.

***I have read and I understand the policies and procedures outlined in this handbook.**

***I have viewed and understand the pathways to promotion for 5th/6th grade on pg. 22 and/or 7th/8th grade on pg. 23, whichever is applicable to my student(s).**

Student Signature Date

Parent Signature Date

Table of Contents

School Compact	pg. 5
Absences	pg. 6
Academic/Behavior Eligibility Considerations	pg. 7
Activity Participation Policy	pg. 7
Anonymous Bullying Report	pg. 8
Assembly Conduct	pg. 8
Breakage/Vandalism/Malicious Destruction	pg. 8
Building Appearance	pg. 8
Bus Conduct	pg. 8
Cell Phones	pg. 8
Cheating	pg. 9
Closed Campus	pg. 9
Conduct Policy	pg. 9
Conflict and Fighting	pg. 9
Counseling and Guidance	pg. 10
Credit System for 7 th & 8 th Graders...Idaho Code	pg. 10
Dance Policy	pg. 10
Directory Information Notice	pg. 10
Discipline Process	pg. 11
District Academic Code for Activities	pg. 13
Dress Standards – Modesty Code	pg. 13
Drugs and Alcohol	pg. 14
Extra-Curricular Eligibility	pg. 14
Field Trips	pg. 14
Gang Activity	pg. 14
Guns/Weapons-Free Schools	pg. 15
High School Credit for Advanced Courses	pg. 15
Inappropriate Items at School	pg. 15
Inappropriate Language	pg. 16
Inappropriate Physical Contact	pg. 16
Lockers -7/8 th grade	pg. 16
Lunch Conduct and Regulations	pg. 16
Middle School Lunch Period	pg. 16
Middle School Opening	pg. 17
Middle School Store	pg. 17
Parents' Right to Receive Teacher Information	pg. 17
Nursing Services	pg. 17
Parent Involvement Policy	pg. 18
Personal Cleanliness	pg. 18
Physical Education Class Dress Requirements	pg. 18
Progress Reports and Report Cards	pg. 18
School Records	pg. 19
School Safety	pg. 19
School Visitors	pg. 19
Search and Seizure	pg. 19

Snow Policy	pg. 19
Stealing/Theft	pg. 20
Student Government	pg. 20
Student Injuries	pg. 20
Tardies	pg. 20
Technology Use	pg. 21
Textbooks, Workbooks, etc.	pg. 21
Tobacco	pg. 21
Wednesday Night	pg. 21
8 in 6 Program	pg. 21

Appendix A

5/6 th grade Pathways to Promotion	pg. 22
7/8 th grade Pathways to Promotion	pg. 23
Positive Behavioral Interventions & Supports	pg. 24
Successful Middle School Students	pg. 25
HMS Steps to Success	pg. 26
HMS Success Contract	pg. 27
HMS Parent Success Contract	pg. 28
Anonymous Bullying Report	pg. 29

**Homedale Middle School
School Compact**

***HAND IN HAND WE CAN LEARN AND WORK TOGETHER TO BUILD A BETTER
WORLD!***

We believe parent and community involvement is essential for Homedale Middle School. It is a key factor in each student's achievement and success.

I, as a **PARENT/CAREGIVER**, agree to

- make sure my child is punctual and attends school regularly.
- go over my child's assignments and read school communications.
- provide for my child a place and time to study and have daily reading time.
- attend school functions (such as Parent-Teacher conferences, open house, concerts, award assemblies, etc.).

_____ Date _____

I, as a **STUDENT**, agree to

- know and follow school rules and be responsible for my own behavior.
- come to class on time and be prepared to work.
- pay attention and ask for help when I need it.
- show respect for others and myself.
- give corrected work and school communications to my Parent/Caregiver.

_____ Date _____

I, as **TEACHER**, want my students to reach their fullest potential. I will

- be aware of the needs of your child.
- communicate with you about your child's progress.
- teach necessary concepts to your child.
- provide assistance to the Parent/Caregiver to help your child at home.

_____ Date _____

I, as **PRINCIPAL**, agree to

- encourage positive communication between the teacher, parent, and student.
- encourage teachers to regularly provide opportunities for the practice of academics at home.
- provide a safe environment conducive to learning.

 _____ Date 2016-17

Please return this page with both student and parent signatures to your homeroom teacher.

Absences

The State Board of Education requires regular attendance of all youth until age 16. Regular attendance, as established by the Homedale School District Board of Trustees, means that a student cannot be absent more than twelve (12) days in any class at the time the class is scheduled. The absence total includes: pre-arranged, excused, and unexcused absences.

An absence is considered excused when:

- 1) parents/guardians have prior knowledge of the absence,**
- 2) parents/guardians have given their permission, and**
- 3) parents/guardians have notified the school.**

A phone call, email, or hand-written excuse from parents is required for each day a student is absent from school. Written excuses should include: student's name, date of absence, and reason for the absence.

Work missed may be made up for full credit within a period of time to be determined by each teacher. After an absence, an admit slip is required upon the return to a missed class. Admit slips should be picked up at the office between 8:00-8:15. Failure to do so may result in a tardy to class.

An absence is unexcused when parents and/or school officials have not authorized it. Unexcused absences may result in after school detention or other consequences.

Truancy is defined as being absent from school (or a class) without the knowledge of parents or school authorities. Truancies will be processed in the following manner:

1st Incident: The student will conference with the principal and the parent/guardian will be notified. The student will be assigned to the next available after school detention.

2nd Incident: The student will be suspended in-school and a conference scheduled with the principal.

3rd Incident: The student will be suspended in-school for 3 days and the parent will be notified that the case may be referred to the School Board of Trustees.

It is against Idaho State law for a student to be truant from school. Therefore, after three (3) truancies, a student may be reported to the Owyhee County Prosecuting Attorney as a habitual truant. This will result in the student and/or parent dealing with the court system.

Academic/Behavior Eligibility Considerations

HMS will follow all current and subsequent eligibility requirements as set forth by the District. All students wishing to participate in extra-curricular activities must meet eligibility standards. Head coaches have the authority to require additional academic/behavior guidelines as deemed appropriate.

To participate in an activity, a student must be in attendance at least four out of seven class periods on the day of the event. A student must also demonstrate that he/she is currently passing any class to be missed with a grade of "C" or better and have no unresolved behavior referrals.

Exclusions to this policy will include the following considerations:

- (1) The student is participating in an activity that is clearly a requirement of the classroom instruction, and his/her grade will be affected if he/she does not attend, and
- (2) Any question regarding the validity of the exclusion will be referred to the principal of the school, and the principal's decision will be final.

Activity Participation Policy

- A. The Board of Trustees believes that all students have the right to learn in an atmosphere that is conducive to their success; that the abuse of chemicals by students has a detrimental effect on the ability of the staff to provide a meaningful educational program; that the harmful use of chemicals is not a normal stage of adolescence. District policy and regulations are based on the laws of the State of Idaho and recognize that the violation of those laws can subject violators to the process of law.
- B. The activity participation policy is for Middle School students who participate in any of the following school activities: all athletics and all elected offices of the school.
- C. Prior to participating in the activities listed above, a student and a parent/guardian must sign a copy of the **District's Activity Participation Policy**. The signed copy must be on file with the Middle School before the student may participate in these activities. Only one signed policy need be on file for each school year. All 7th graders who choose to participate in extra-curricular activities will need to have a physical on file. It will be valid for 2 years.
- D. Participants in an interscholastic activity shall be required to present and conduct themselves in a manner that will at all times bring credit to Homedale Middle School. Failure to do so will result in an action, suspension, or both, appropriate to the circumstances.
- E. According to District Policy 8.09 (Student Activities Drug Testing), all 7th and 8th grade middle school students participating in any school-sponsored competition representing Homedale School District (that is not a graded class) will participate in a mandatory drug testing program, Idaho Drug Free Youth.

Anonymous Bullying Report

Students are encouraged to immediately report any type of bullying to a teacher, the counselor, principal, or School Resource Officer (SRO). In the event that a student or parent feels uncertain about making a report in person, an anonymous report is made available to students in the school library, on the school's website, or on page 29 of this handbook. Information will be directly transferred to the principal.

Assembly Conduct

Students are expected to report to the assigned area in a quiet and efficient manner and be seated as quickly as possible. Belongings will be left in the class from which they are dismissed and will be retrieved after the assembly. Students will also be expected to sit with the class/teacher from whom they are dismissed. Attention should be focused on the assembly presenter(s). If a student acts inappropriately, he/she will be removed. Students who desire not to attend any assembly must report to an alternate assigned area with study or reading materials. Any student failing to report to this assigned area or the assembly will be considered truant.

Breakage/Vandalism/Malicious Destruction

Breakage or destruction caused by poor choices or avoidable acts will be the financial responsibility of those person(s) causing the damage. Students and/or parents/guardians will be held financially responsible for any acts of vandalism and/or malicious destruction to school property. This may also include private property located on the school premises.

Building Appearance

Our school has a very positive reputation concerning the appearance of the building and grounds. The staff and student body have the responsibility to help maintain this positive image in these ways: helping to keep rooms neat and clean; keeping lockers closed; using waste baskets; not marking on walls or desks; and refraining from willful destruction of school property.

Bus Conduct

Those students who ride a school bus or any other type of transportation provided by the school district are subject to the rules of the school and must follow the directions given by the driver and/or supervisor. Students will be expected to conduct themselves in a manner that is safe and orderly for all who are being transported.

Cell Phones

Students may bring a cell phone to school but must refrain from using it during the school day without the permission of a teacher or staff member. On occasion, teachers may allow students to utilize their cell phones for learning activities, such as calculating math problems, texting a response to an automated poll, or looking up information on Google.

If a student needs to contact his/her parents via a cell phone, he/she must first inform a school employee and wait for the appropriate circumstances to make the call. Students using their phones in other ways or without permission will have their phones taken away. Parents may pick up the confiscated phone in the school office.

Students are able to use their cell phones before school begins and during lunch.

Cheating

Whenever a student is guilty of cheating, the individual teacher will handle the first offense. Further offenses will be referred to the administration for discipline in a manner appropriate to the situation.

Students are expected to cite their sources in the appropriate format for the content area in which they are writing. In English Language Arts, students will follow the most current Modern Language Association (MLA) formatting. In all other classes, students will use the most current American Psychological Association (APA) format. Examples of both can be found in the school's library or on the Internet.

Closed Campus

The Middle School has been designated as a closed campus during regular school hours. Students may only leave campus if a parent/guardian personally checks them out at the office.

Conduct Policy

All students at Homedale Middle School are expected to conduct themselves in a respectful, responsible manner. Our program is designed to provide an atmosphere for students to learn to accept and perform these responsibilities. Within this framework, Homedale Middle School's goal is for students to be productive, responsible citizens. Students are expected to do the right and proper thing and to behave in an acceptable manner. Persistent violators of acceptable standards will not be able to continue at Homedale Middle School. An attempt is made to treat each student as an individual, but all students are expected to live, act, and behave according to our standard.

Conflict & Fighting

Students who have a difference of opinion which could lead to conflict should seek help from the school staff. Students who provoke or start fights or who are guilty of hitting, slapping, shoving, or otherwise physically assaulting another student first will usually receive more severe disciplinary consequences. Students are expected to immediately report another student who is trying to start a fight or who has physically assaulted another student. Those involved in fights or other conflicts will be subject to after-school detention, suspension and/or expulsion.

Counseling and Guidance

The Counselor's Office is open to all students when the counselor is available. Personal, social, or school matters that may be discussed will be held strictly confidential. The counselor in the office may be contacted between classes, before or after school, or at lunchtime. If the counselor is not immediately available, the student's name will be left with the secretary and he/she will be sent for at a later time.

Credit System for 7th & 8th Graders...Idaho Code

It is the goal of Homedale Middle School for all students to be successful. Middle school is a transition time for students. Many habits are formed and reinforced during these years. In order to help prepare students for success in their current and future education, HMS and the school board has implemented the Middle School Credit system for promotion.

To earn promotion to the next grade, all 7th and 8th grade students must earn 80% of the credits attempted per semester. They also must pass one semester of year-long CORE classes. They must have an attendance rate of no less than 93%. See page 21 for more information.

An alternate path is available and students must meet the requirements to be promoted.

1. Possess a 2.0 cumulative yearly grade point average,
2. Have an attendance rate of no less than 93%.

Fifth and sixth grade students must pass their core classes and earn no more than 2 Fs. If 5th/6th grade students earn 2 or more Fs in any one content area, they can use the alternate mechanism, meeting 2 of 3 requirements, to earn promotion to the next grade.

Credit Recovery Options: Students must retake two of the failed core credits through mechanisms established by the administration.

Dance Policy

The administration and faculty recognize that school dances are very popular among 7th/8th grade students. The following guidelines have been established.

1. Students must have transportation immediately following the dance.
2. Only actively enrolled Homedale 7th/8th grade students will be admitted. Neither visitors nor high school students will be permitted. Middle School students are not allowed at Homedale High School dances.
3. Students who leave the dance **will not** be re-admitted.
4. Student dress must meet the school dress code.

Directory Information Notice

The Family Educational Rights and Privacy Act (FERPA), a Federal law, requires that the Homedale School District, with certain exceptions, obtain your written consent prior to the disclosure of personally identifiable information from your child's education records. However, the Homedale School District may disclose

appropriately designated "directory information" without written consent unless you have advised the District to the contrary in accordance with District procedures. The primary purpose of directory information is to allow the Homedale School District to include this type of information from your child's education records in certain school publications. Examples include:

- a playbill, showing your student's role in a drama production
- the annual yearbook
- honor roll or other recognition lists
- graduation programs
- sports activity sheets (such as for wrestling, showing weight and height of team members)

Directory information, which is information that is generally not considered harmful or an invasion of privacy if released, can also be disclosed to outside organizations without a parent's prior written consent. Outside organizations include, but are not limited to, companies that manufacture class rings or publish yearbooks. In addition, two federal laws require local educational agencies (LEAs) receiving assistance under the Elementary and Secondary Education Act of 1965 (ESEA) to provide military recruiters, upon request, with three directory information categories (names, addresses and telephone listings) unless parents have advised the LEA that they do not want their student's information disclosed without their prior written consent. If you do not want the Homedale School District to disclose directory information from your child's education records without your prior written consent, you must notify the district in writing within 30 days of receipt of this notice. The Homedale School District has designated the following information as directory information:

- Student's name
- Grade level
- Parents'/guardians' names
- Academic awards, degrees, and honors
- Information in relation to school-sponsored activities, organizations, and athletics

Discipline Process

Our goal is to teach our students to spend their time and energy productively. To further Homedale Middle School's excellence, we expect students to behave in a manner that will bring honor to our school and community. Each student is responsible for his/her own actions. The school's aim in dealing with student misconduct is not primarily to punish, but to bring about positive change. In an effort to create and maintain an environment in which students can grow academically and socially, we have designed the *Homedale Middle School Positive Behavioral Interventions & Supports* guide to encourage mutual respect and promote independent behavior in our students. This plan is expected to ensure that all students understand their rights and responsibilities, the consequences of violations of school rules, and the procedures for dealing with violations.

Minimum Standards and Guidelines

Homedale Middle School believes all students can be successful if they apply *The Great Eight Pillars to Success* during their 5th – 8th grade years. Students learn to be and are expected to act as citizens, responsibility-takers, self-managers, friends, problem-solvers, communicators, leaders, and life-time learners. The desired behaviors for each characteristic are listed on the *Successful Middle School Students* document on page 25.

Classroom Level

Introducing, modeling, and reinforcing positive social behavior is an important step of a student's educational experience. We ask students to show PRIDE (Patience, Respect, Integrity, Determination, Excellence) in all they do. Teaching behavioral expectations and rewarding students for following them is a much more positive approach than waiting for misbehavior to occur before responding. Students will be recognized with "PRIDE points" for being successful students. However, if a student fails to produce the desired behavior, the following process will begin:

Step A: Verbal Warning

Step B: Consequence – The student will be sent to another room to refocus by completing the ~~Steps to Success~~ Pride form. (If a student receives three refocus forms in a class during one quarter of school, that student will be referred to the principal for after-school detention.) All forms will be entered into Lumen by the issuing teacher. Office PRIDE forms will be entered by the principal.

Step C: Consequence/Parent Contact – The student and/or teacher will contact his/her parent to explain the issue and the teacher will enlist the parent's help for encouraging appropriate student behavior.

Step D: Consequence/Teacher-Student Behavior Contract

If inappropriate behavior continues beyond the parent contact (Step C), the teacher will meet with the student to write an agreed-upon contract that outlines the expected student behavior and appropriate consequences. Parents will be notified of the expectations.

Staff members do have the right to discipline students in a manner that is appropriate to the offense, skipping the above steps if necessary.

Administrative Level

Discipline problems that continue in spite of the teacher's efforts or which consist of a more serious nature, will be dealt with at the administrative level in the following way:

Step 1: After-School Detention – 1 day (60 minutes)

Step 2: After-School Detention – 2 days (120 minutes)

Step 3: After-School Detention – 3 days (180 minutes)

Step 4: Friday Detention – 1 day (4 hours)

Step 5: ~~ROSE~~ PRIDE Success Contract – 1 day in-school suspension

Step 6: ~~ROSE~~ PRIDE Success Contract for parents – 2 days in-school suspension

Step 7: Out-of-School Suspension – 1 day out-of-school suspension

Step 8: Out-of-School Suspension – 3 days out-of-school suspension

Step 9: Out-of-School Suspension – 5 days out-of-school suspension and administrative review

Step 10: Out-of-School Suspension - Until the next scheduled Board meeting and recommendation for expulsion

Students involved in severe incidences that disrupt the educational process will be immediately sent to the principal's office. Severe incidences may be defined as swearing, bullying, sexual harassment, physical assault, or illegal substance abuse and will result in detention, Friday Detention, In-School Suspension, Out-of-School Suspension, or Administration recommendation to the School District's Board of Trustees for expulsion as determined by the principal.

District Academic Code for Activities

It is a privilege to be able to participate in activities at Homedale Middle School. Along with the privilege is the responsibility of the student to do well academically. The following academic criteria are required of all students in order to participate in activities:

1. Pass all classes
2. Maintain a current 2.0 GPA in all classes

Once every two weeks throughout the year, grades are checked on all students participating in extracurricular activities. Students not meeting the criteria in a given week will be placed on probation, and the student, parent/guardian, and advisor is notified. The student must still participate in practices and contests the following week but is warned to bring up the grades.

If the student is not meeting the criteria for a second consecutive week he/she is placed on suspension. The student is not allowed to participate in any contest (suit up, sit on the bench, travel with the team, etc.) until the next grading period in which he/she meets the academic criteria. The student may be allowed to practice with the team provided he/she is seeking extra help to meet the academic criteria. Please refer to the complete district policy (8.17) for more information.

Dress Standards - Modesty Code

The administration and faculty recognize that certain standards of dress are desirable in the interest of better education. Extremes of dress and appearance attract improper attention and thus detract from the learning process in the classroom. Examples of dress considered inappropriate for Homedale Middle School students include the following:

1. Blouses, sweaters or shirts that do not cover the stomach, back, or undergarments.
2. Tank-type shirts and other apparel deemed inappropriate or immodest by the staff and administration. (Sleeveless shirts should cover from neckline to sleeve line.)
3. Cut-offs, shorts, and dresses that do not adhere to a length which is modest and appropriate for school time as deemed by the staff and administration. (This also includes cuts, rips, or holes in any clothing, which could be deemed immodest.)
4. Clothing with questionable language or graphics.
5. Hats worn in the building. (This includes bandanas, scarves, visors, knit caps, and sweatshirt hoods.)
6. Evening bedtime clothing like pajamas and/or slippers.
7. Lack of shoes or sandals.
8. Any article of clothing (or lack thereof), jewelry, make-up, etc., which draws undue attention or is disruptive to the educational environment.
9. Hanging belts. (Non-compliance will result in the belt being taken away.)

Drugs and Alcohol

Consumption, possession, sale, or being under the influence of any illegal narcotic, dangerous drug/substance or alcohol of any form, on or about the school premises or at any school-sponsored activity is prohibited. Violating this regulation will be handled in accordance with the School District's "Substance Abuse" policy 8.11, which is available from an administrator, counselor or staff member. In addition, when the situation calls for it, the violator will be turned over to the police, suspended, and/or expelled from school.

Extra-Curricular Eligibility

Any student holding an office and/or participating in extra-curricular activities must pay their student body activity fee to be eligible to participate as such. Any student participating in extra-curricular activities will be subject to the district academic code for activities and must participate in the Idaho Drug Free Youth (IDFY) club at HMS. IDFY membership requires drug testing at least once during the school year, with the possibility of additional random testing.

Field Trips

Students must adhere to District Rules and Guidelines. Students must be passing all classes/subjects missed while on a field trip and must notify teachers in advance. Students who are failing a class/subject must have prior permission from that teacher and the principal or his/her designee. It is the responsibility of the student to gain that permission. Students who are not passing or have not completed the field trip form may not be allowed to participate.

Gang Activity

It is the policy of the Homedale School District that membership in secret fraternities or sororities, or in other clubs or gangs not sponsored by established agencies or organizations, is prohibited. Gangs that initiate, advocate, or

promote activities, which threaten the safety or well-being of persons or property on school grounds or which disrupt the school environment are harmful to the educational process.

The use of hand signals, graffiti or the presence of any apparel, jewelry, accessory or manner of grooming which, by virtue of its color, arrangement, trademark, symbol or any other attribute which indicates or implies membership or affiliation with such a group, presents a clear and present danger to the school environment and educational objectives of the community and are, therefore, forbidden.

Any student wearing, carrying, or displaying gang paraphernalia, exhibiting behaviors or gestures which symbolize gang membership, or causing or participating in activities which intimidate another student will be subject to disciplinary action including suspension and expulsion.

Gun/Weapons-Free Schools

School rules prohibit bringing to school any items, which are dangerous to students and/or staff. The Homedale School District will require that when a student is found to be in possession of **any object intended** to be used as a weapon to be expelled from school for a period of not less than one (1) year, except that the Homedale Board of Trustees may modify the expulsion requirement on a case-by-case basis (Idaho Code Section 33-205 and District Policy 8.25 & 8.26). This regulation shall also apply to any apparatus that gives the appearance of being a dangerous item, such as toy knives, guns, etc. Violation of this provision can be punishable as provided by Idaho Code 18-3302D.

If a student realizes he/she has an inappropriate object at school, he/she should inform a staff member immediately that it is in his/her possession. Disclosure will result in the staff member turning the inappropriate object into the office and a student conference with the principal. The principal will notify parents who will need to pick up the inappropriate object from school at their convenience. Failure to disclose an inappropriate object could result in suspension.

High School Credit for Advanced Courses

If a student completes a high school course (that meets the same content standards required by high school and taught by a highly qualified teacher) with a grade of C or higher before entering 9th grade, the number of credit hours assigned to the course shall be transferred to the student's high school transcript. Students will have met the content requirement for high school.

Inappropriate Items at School

Students are not to operate the following items which are considered disruptive to the educational process: pagers, beepers, laser pointers, video-type games or

any other toys, etc. Unacceptable items will be confiscated and given to the building principal for further action.

Inappropriate Language

This school does not condone profanity and any other types of inappropriate language, drawings, pictures, writings, or expressions. Those who engage in these types of expression will be subject to disciplinary consequences, including suspension and/or expulsion.

Inappropriate Physical Contact

Homedale Middle School administration, staff and the student council **DO NOT** condone public displays of affection on school property. Students involved will be contacted and asked to correct the problem. Failure of students to cease the action may result in suspension.

Lockers 6th/7th/8th Grade

Each student will be assigned a hall locker when they register. Students are not authorized to change locker assignments or use another locker without permission from the administration. Lockers are for your convenience and are the responsibility of the student. The school assumes no responsibility for safeguarding articles left in lockers. Always take items of value with you or check it in at the office. Permission is granted for students to provide their own lock on their assigned locker. Locks that are placed on the wrong locker will be removed with bolt cutters. The school will not replace locks that must be removed. Students will be allowed to go to their lockers before school, at lunch, and after school.

Lunchroom Conduct and Regulations

In order to maintain a clean building and campus, all students are required to cooperate with the cafeteria personnel and lunchroom supervisors and to keep the cafeteria as clean as possible. A student may lose lunchroom privileges if conduct is inappropriate. They will also be subject to disciplinary action.

1. Students will enter the lunchroom and sit at a table of their choice. Each table will be excused to get in line to be served lunch. Students are expected to conduct themselves in a courteous manner. Crowding or cutting in the serving line is not permitted.
2. The throwing or misuse of food or utensils is not permitted.
3. The taking of any food or drink out of the lunchroom is not permitted, unless requested in writing by staff.
4. Students are required to deposit any wrappings, trash, and disposable containers in the waste containers.
5. Lunchroom supervisors' requests must be honored at all times.
6. Violation of any of the above could result in student violators cleaning the lunchroom.

Lunch tickets can be purchased in the lunchroom and are not transferable. Lunch tickets will not be charged for any reason.

Middle School Lunch Period

Students are to be in one of the following areas during the noon lunch period:

1. School cafeteria
2. Designated play areas for the 5th/6th grade students and 7th/8th grade students
3. In the classroom after displaying a hall pass from a teacher

Middle School Opening

The Middle School building opens at 7:15 a.m. each day. Students are not allowed in the building prior to 7:15 a.m. unless an extra-curricular activity involving the student has been scheduled.

Middle School Store

The school store may be open during Trojan Time. It is emphasized that the opening of the store is a privilege and may be forfeited at the discretion of the staff.

Parents' Right to Receive Teacher Information

Federal Law requires that each school district receiving Title I funds notify parents of each student attending any school receiving these funds that information regarding the professional qualifications of their child's classroom teacher(s) may be requested.

As a parent of a student attending a school receiving federal program funds, you have the right to know:

- Is my child's teacher licensed to teach the grades and subject(s) assigned?
- Is my child's teacher teaching with a provisional license, meaning the state has waived requirements for my child's teacher?
- What is the college major of my child's teacher?
- What degree or degrees does my child's teacher hold?
- If there are instructional aides working with my child, what are their qualifications?
- If my child is or will be taught for 4 or more consecutive weeks this year by a teacher who is not highly qualified, will I be notified in a timely manner?

To request the state qualifications for your child's teacher or instructional aide, please contact the Homedale School District Office at 337-4611 or the building principal.

Nursing Services

Part-time nursing services are provided to assist in emergencies and are available for students on a referral basis. When students become ill at school, they should first get teacher permission to leave class and then go immediately to the office for assistance. If it is determined they are too ill to remain at school, parents will be contacted. Students who need to take medication during the school day should bring a written note from parent/guardian or their doctor explaining the use of the medication and the prescribed dosage. Parents should

inform the school when it is important to know about a particular medical problem. A sincere effort will be made to maintain confidentiality regarding student medical issues.

Parent Involvement Policy

The Board of Trustees has set expectations for parental involvement in Title I schools to encourage parental participation in the education process for their children (see Policy (370). The expectations include:

- An annual meeting with parents of Title I students
- Keeping parents informed about their child's academic progress, assessment results, curriculum, and expected proficiency levels
- Encouraging and supporting parental attendance at meetings
- Involving parents in planning, reviewing, and improvement of Title I program.
- Provide parents with strategies to support and assist their child at home
- Plan and implement an annual parental involvement plan at each school
- Develop a partnership through the School – Parent – Student Compact, which outlines how parents, school staff and students will share in the responsibility for improving student achievement
- An annual evaluation of the parental involvement program that includes parental input

Personal Cleanliness

Personal hygiene is important to everyone. Students should give their best effort to come to school wearing clean clothing and having clean bodies free from offensive odors associated with poor personal hygiene. Using soap when showering and applying deodorant are all-important. The school can assist students with the above items if necessary. Please contact the counselor.

Physical Education Class Dress Requirements

The following dress standard shall be required of each 7th/8th grade student who participates in a physical education class: PE uniforms are available for purchase, or **solid red shorts and a plain red tee-shirt (with sleeves) without any markings, logos, or writing on it** can be worn. Only the student's name can be on the shirt and shorts. Those students who for religious reasons support a different dress standard will be accommodated if requested by the parent/guardian in writing and approved by the principal. On days when warmer clothing is necessary, sweat suits, etc., can be worn over the required dress. The student must also furnish an appropriate pair of gym shoes, which are used for P.E. only. This means that the shoes will not be worn for everyday use and will remain with student's P.E. gear.

Progress Reports and Report Cards

Student progress reports will be issued to all students (for delivery to parent/guardian) near the middle of each nine-week grading period. If the parents desire an additional conference, it will be scheduled upon request through the office (337-5780). Parents/guardians are asked to discuss all

progress reports with the student and, after reviewing the reports, to sign and return the bottom portion to the school. Report cards are issued to students (or parents/ guardians at Parent-Teacher Conferences) at the end of each quarter.

School Records

The Family Educational Rights and Privacy Act of 1974 provide parents access to all of a student's educational records. It also states that parents must be given the opportunity for a hearing to challenge the content of the records. The school will insure and provide confidentiality pertaining to student's records in that only authorized persons will have access to them.

Under the Act of 1974 schools cannot release files on students except:

- to other educational agencies with a legitimate educational function;
- to officials of other schools when a student is transferring;
- to certain federal agencies and to agencies in connection with a student's request for financial aid;
- when parents authorize the release; or
- when the information has been lawfully subpoenaed.

School Safety

The School Board of Trustees deems the following actions disruptive to school discipline:

1. Instigating, or taking part in false fire alarms or bomb scares;
2. Possession of, or distribution of any inappropriate item at school; or
3. Any act which, in the judgment of the principal, is detrimental to the health, welfare, or morals of those attending Homedale Middle School (Idaho Code 33-205).

School Visitors

Parents and patrons are always welcome in our school. Upon entering the building, all visitors are asked to sign in at the office and acquire a visitor's pass. Every parent, guardian, or other person who upbraids, insults, or abuses any teacher of the public schools, in the presence and hearing of a pupil thereof, is guilty of a misdemeanor (Idaho Code 18-916). Due to school liability, out-of-district students/minor visitors are not welcome during the time school is in session.

Search and Seizure

The school administrators and/or teachers, upon reasonable suspicion that a student has or is violating either the law or the school rules, can search students, vehicles, lockers or any other concealed place on the school grounds. Items suspected to be illegal, stolen or unsafe can and will be confiscated until such time the situation can be resolved by the proper authorities.

Snow Policy

Due to the responsibility of the school to provide a safe environment for all students and staff, there is to be no snowballing, face washing, etc., on school property. Snow and ice are not to be brought into any school building.

Stealing – Theft

It is considered stealing or theft if you take something that does not belong to you. Those who are found guilty of stealing are subject to severe disciplinary measures, which could involve the police, suspension and/or expulsion.

Student Government

The Homedale Middle School student government will consist of five (5) student body executive officers, with the principal serving as the advisor. Meetings will be scheduled on a monthly basis. The five (5) executive officers will be elected by the student body, no later than the third (3rd) Monday in September. Any student wishing to declare as a qualified candidate for an office must get a nominating petition from the principal's office and gather ten (10) student signatures. The five (5) executive student body officers are:

- **President** - must be an 8th grade student
- **Vice-President**
- **Secretary-Treasurer**
- **Reporter**
- **Historian** - must be an 8th grade student.

Any student participating in student government will be subject to the district academic code for activities.

Student Injuries

Even with the greatest precautions and the closest supervision, accidents can and do happen. They are a fact of life and a part of the growing-up process. Parents need to be aware of this and be prepared for possible medical expenses that may arise should their child be injured at school. **The school district does not provide medical insurance to automatically pay for medical expenses when students are injured at school.** The district carries only legal liability insurance. The district does make student medical insurance available to families for their individual purchase. Brochures outlining the coverage and premiums are handed out at the beginning of the school year, and are available at the school office.

Tardies

Tardies disrupt classes that are in session. For this reason, tardies will not be tolerated at Homedale Middle School. A student is **tardy** if he/she is not in their assigned area when the bell rings each period. Students arriving to class more than ten (10) minutes after the second bell rings will be considered **absent** from that class period. The teacher will determine whether the tardy will be excused or unexcused. Unexcused tardies will accumulate during a nine (9) week grading period and will be handled in the following manner:

2nd Tardy – Warning Notification sent by principal

3rd Tardy – After-School Detention (60 minutes)

4th Tardy – 2 days After-School Detention (120 minutes)

5th Tardy – 3 days After-School Detention (180 minutes)

Any Additional Tardy that quarter – Friday Detention (4 hours)

Technology Usage

All students of the Homedale School District are provided with access to the district computer network. The network provides students with essential learning tools and instruction while here at school. The use of Homedale School District's information networking capabilities is a privilege, not a right. Each time a user accesses the district's network from any school computer, an electronic signature is required. The electronic signature is legally binding and indicates the user's understanding of, and agreement to comply with, the Technology Acceptable Use Policy. The policy can be found on the district's website:

www.homedaleschools.org

Students may bring technology to school but must refrain from using it during the school day without the permission of a teacher or staff member. Students may use technology before school and during lunch. The school is not responsible for lost or stolen items.

Textbooks, Workbooks, Etc.

The major portion of textbooks, workbooks, and various other pieces of equipment are furnished to the students by the school. It is the responsibility of the student to give adequate care and prevent the loss of said materials. The student and/or parent/guardian will be responsible for the cost of repair or replacement of any materials issued which are damaged or lost.

Tobacco

Student use or possession of tobacco in any form (including chewing tobacco) on the school premises, either during school hours or while attending school-sponsored activities, is prohibited. According to policy, those found in violation can/will be referred to the Student Assistant Team (SAT) for assessment and/or group referral. The violator may be turned over to the police, suspended, and/or expelled from school.

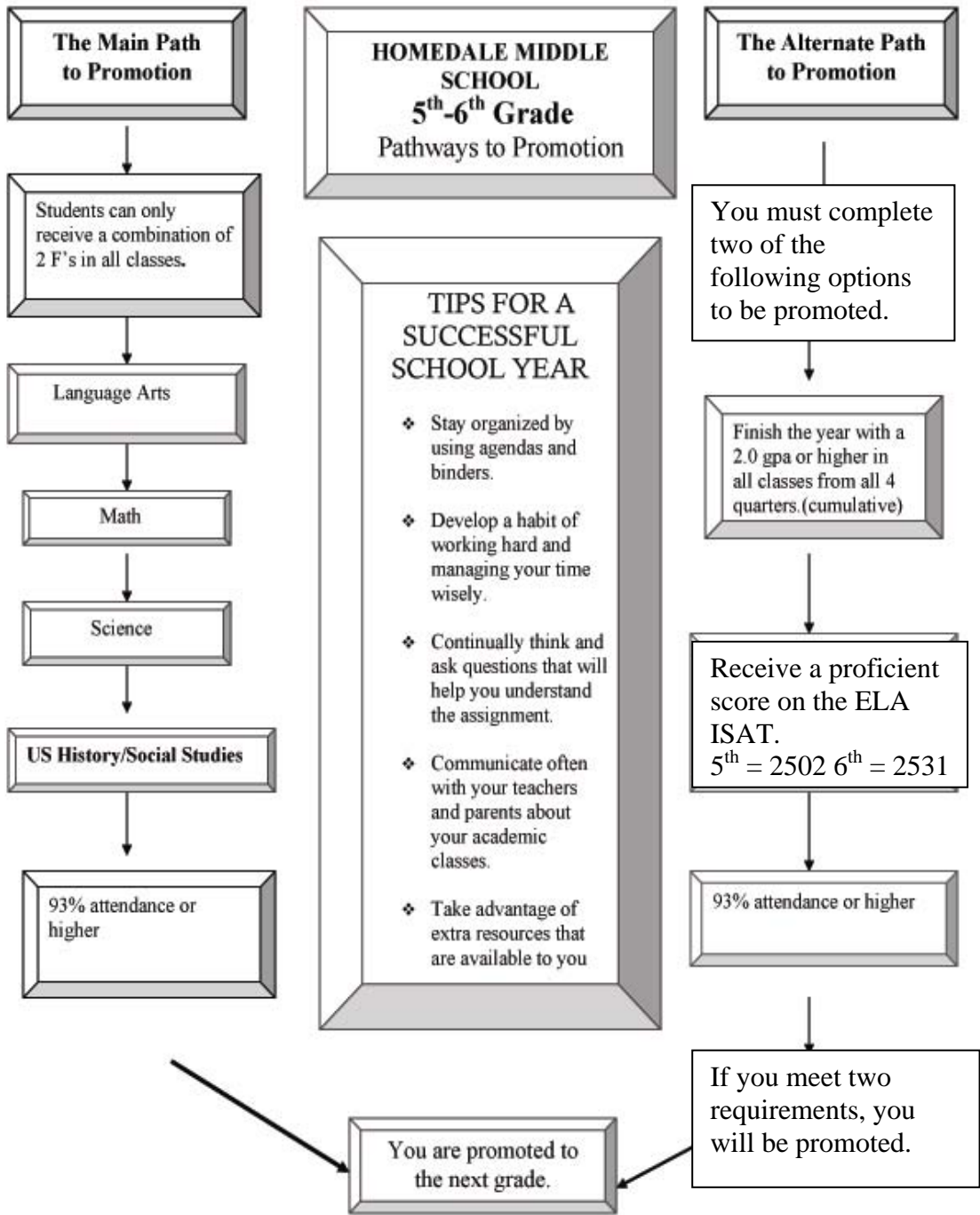
Wednesday Night

Wednesday night is designated as family and community night. The school cooperates with all community businesses, religious organizations, city recreation events, and families by not scheduling school functions or athletic contests on this night. In certain sports, practices may be extended because of limited space. The exception to this rule is when Snake River Valley activities are scheduled outside the jurisdiction of the local school district.

8 in 6 Program

HMS students can participate in the 8 in 6 program which allows any student at the end of the 6th grade year to enroll in additional classes during the summer and/or next school year. Students will continue to take their regular middle school classes and take an additional class from another approved on-line school. For more information contact the HMS counselor.

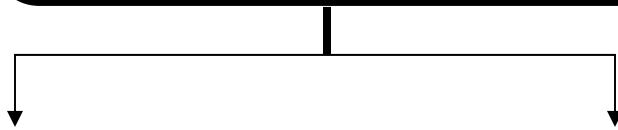
Appendix A



PREPARE YOURSELF FOR SUCCESS

- Stay organized by using agendas and binders
- Be proactive, develop a habit of working hard and managing your time wisely.
- Continually think and ask questions that will help you understand the assignment.
- Work together and communicate often with your teachers and parents about your classes.
- Attend your classes and be on time.

PATHWAY TO PROMOTION TO THE NEXT GRADE



Students enrolled in 7th and 8th grade must pass 80% of courses

AND

Must pass both semesters of a year-long Core course

AND

Must have an attendance rate of no less than 93%

PROMOTION TO THE NEXT GRADE

ALTERNATE PATH
Complete two of the following options successfully

1. Receive a proficient score on the ELA ISAT.
7th = 2553
8th = 2567

Possess a 2.0 cumulative yearly grade point average GPA

AND

Have attendance rate of no less than 93%

PROMOTION TO THE NEXT GRADE

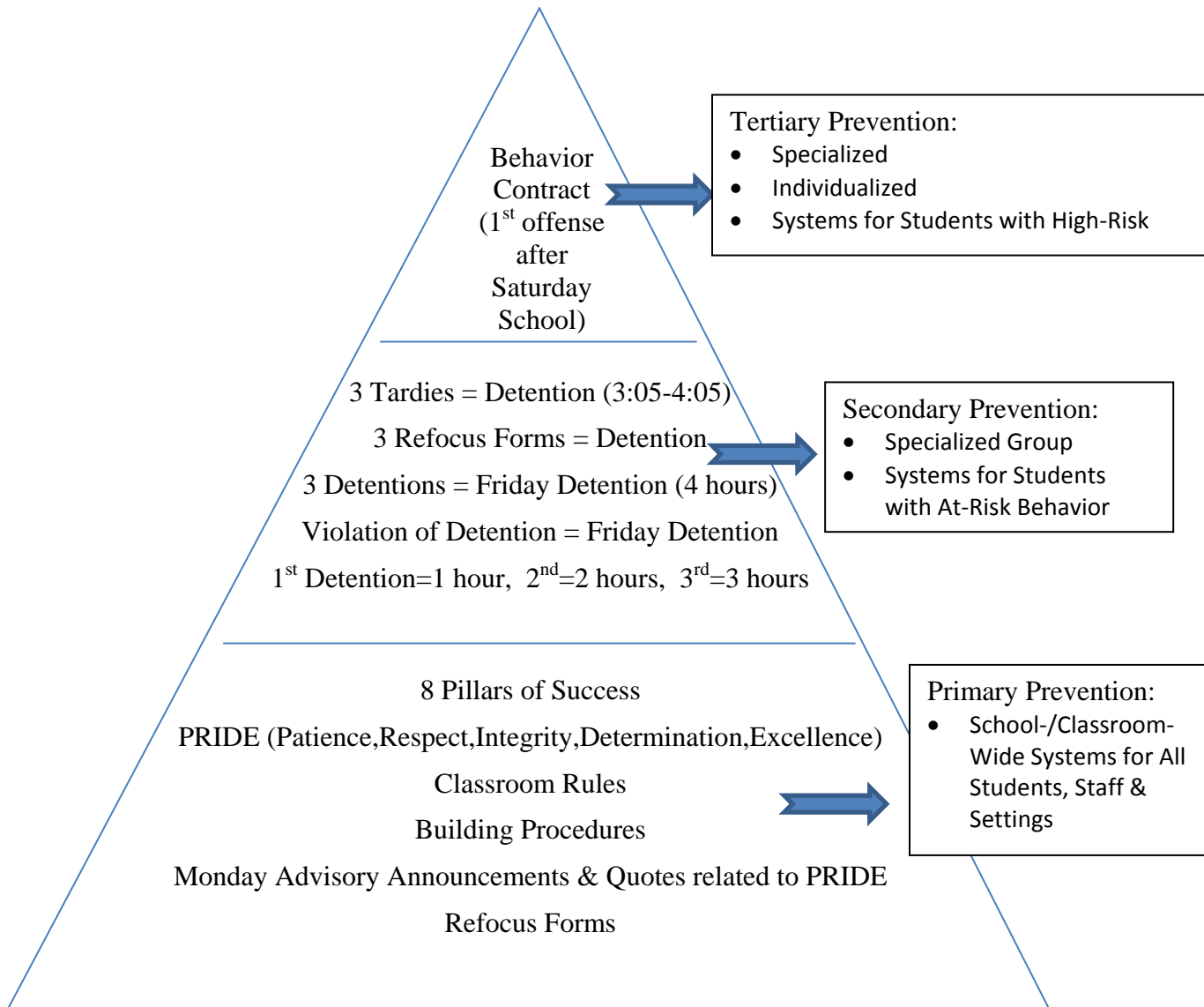
CREDIT RECOVERY PATH

Students must retake two of the failed core credits through mechanisms established by the administration.

PROMOTION TO THE NEXT GRADE

*Credit Recovery Path will be determined by the IEP team for students with disabilities.
*LEP student's promotion will be determined by the IELA scores or the LEP/District team.
*Until two of the failed core credits are retaken, students will be retained in the previous grade level.

Homedale Middle School Positive Behavioral Interventions & Supports



Introducing, modeling, and reinforcing positive social behavior is an important step of a student's educational experience. Teaching behavioral expectations and rewarding students for following them is a much more positive approach than waiting for misbehavior to occur before responding. The purpose of school-wide PBIS is to establish a climate in which appropriate behavior is the norm.

Successful Middle School Students

Academic Philosophy: Students are responsible to learn *The Great Eight: Pillars to Success* in Homedale Middle School as they prepare for High School and employability in adulthood. Students who strive to fulfill these academic expectations will develop eight essential characteristics of good citizenship and employability. Successful Homedale Middle school students will greatly benefit by possessing these attitudes and skills.

Citizen

- * Respects rights and property of self and others
- * Demonstrates honesty and integrity
- * Arrive on time and attends regularly

Responsibility-Taker

- * Accepts responsibility for tasks and personal actions
- * Is reliable and dependable
- * Completes assignments on time
- * Brings appropriate materials to class

Self-Manager

- * Listens and follows directions
- * Completes assignments neatly and accurately
- * Stays on task; not distracting or distractible

Friend

- * Cooperates with others
- * Demonstrates appropriate personal interaction with peers and supervisors
- * Looks out for the interests of others

Problem-Solver

- * Plans and organizes work
- * Reasons and makes appropriate decisions

Communicator

- * Asks questions and seeks help when needed
- * Speaks and writes using appropriate language
- * Actively listens

Leader

- * Works well without supervision
- * Possesses self-confidence
- * Demonstrates pride in work

Life-time Learner

- * Shows initiative
- * Seeks knowledge for its own rewards
- * Brings knowledge and understanding to others while becoming wise

HMS Steps to Success

Student's Name: _____

Date: _____

Write 1-2 sentences explaining the inappropriate behavior you chose. **Do not use "nothing," "I don't know," "IDK," etc.**

What did you expect to gain from this behavior?

- I wanted attention from others.
- I wanted to be in control.
- I wanted to avoid doing my homework.
- I wanted to cause problems because I am sad inside.
- I wanted to cause other problems because they don't like me.
- I wanted _____.

Patience

Respect

Integrity

Determination

Excellence

Circle one (or more) of the above PRIDE elements that you chose not to follow, and answer this question:

How has my behavior broken one or more of our school's elements of PRIDE?

By choosing a more appropriate behavior, I can improve my character. What positive change in behavior will I choose from this point on?

- I want to be a successful and PRIDEful student at HMS.

Student's Signature: _____



Student:	Date:
Teacher: Leave squares <u>clear</u> if student demonstrated “pride” according to the expectation level of HMS. <u>Note concerns only (in pen)</u>.	

Behavior	Period 1	Period 2	Period 3	Period 4	Period 5	Period 6	Period 7
P atience – Overall, I show pride and ownership for myself (actions and words) towards myself and others.							
R espect – Overall, my actions show that I respect my school and the people in it.							
I ntegrity – I respect myself by doing what is right even when no one else is watching.							
D etermination – I remained focus and driven to complete the tasks at hand.							
E xcellence – I take pride in providing quality work in all of my classes, as well as monitoring my behavior at all times.							

TROJAN



- Patience
- Respect
- Integrity
- Determination
- Excellence

HOMEDALE MIDDLE SCHOOL SUCCESS CONTRACT
--

Homedale Middle School staff enters into this contract with _____
and the parent's of _____ in order to ensure this student's success and
positive school experience.

As Staff, We Will:

- Provide a form that clarifies daily expectations.
- Note and reward successes on form.
- Note areas of improvement on form.
- Notify parents daily in Lumen of student's successes and expectations for improvement.

As Parents, We Will:

- Read daily Lumen notifications.
- Set high expectations for our child at home.
- Appropriately reward improved behaviors

Staff Signature: _____

Parent Signature: _____

Student Signature: _____

Anonymous Bullying Report

Please check the type of bullying you are reporting.

- Name-Calling / Belittling / Demeaning
- Gossiping / Spreading Rumors
- Ostracizing / Excluding
- Cyberbullying (Cell Phone, Internet Device)
- Sexual Bullying (Vulgar Gestures, Crude Comments, etc.)
- Prejudicial Bullying (Singling out due to race, religion, or sexual orientation)
- Other: _____

How frequently does this behavior occur?

- Every day
- Once or twice per week
- More than three times per month

Where does this behavior occur?

- School Classrooms
- School Cafeteria
- School Playground or Gym
- School Bus
- Homedale School District
- Other: _____

When does this behavior occur?

- School Hours
- After School Hours
- Weekends

Please include the names of any students involved. (Include any other information the principal needs to know.)

If you wish to leave your name, please do.

***Please turn in this form to the "Anonymous Reports" box in the school library.