



MAHTOMEDI
PUBLIC SCHOOLS

Referendum Overview

June 23, 2025

Experience Excellence



Overview & Process

- The District and School Board have spent the last year reviewing options to address our operating budget needs. We are like other school districts facing budget pressures including inflation.
- The District and School Board have spent the past two years conducting research, meeting with stakeholders, and reviewing options related to facilities.

Board Role: June 23

The Administration is requesting the School Board call a special election in order to hold a **two-question referendum** on November 4 - one for operating revenue and one for facility improvements.

Advancing Excellence

We enacted a new Strategic Plan during the 2023-24 school year and during that time we have advanced excellence by:

- Enacting LETRS training and Wit & Wisdom Literacy Curriculum for K-5.
- Expanding STEM, Literacy, Communications, Theatre, and Digital Arts at Middle School level.
- Expanding course offerings for career and college readiness, including personal finance, CTE, business, communications, and AVID academic success strategies.

This referendum supports our Strategic Plan and long-term vision for academic excellence, student well-being, and responsible stewardship.

Noteworthy Accolades About Mahtomedi Public Schools

- 94% Quality Rating from Families
- MCA scores and Graduation rates are consistently among the top independent school districts in the state.
- Exceptional Athletics, Arts, and Activities offerings at all levels
- AP School Honor Roll – Gold
- U.S. News & World Report Top High Schools - Silver
- Five Specialist teachers in Elementary School (Media, STEM, Gym, Music, Art)
- \$3M+ invested by the Mahtomedi Area Education Foundation
- A rating from Niche.com

Our [Annual Report](#) includes data and accomplishments from 2023-24

Why Do We Need to Go to Voters?

Like many districts, we face financial pressures from:

- Inflation outpacing funding
- 11%+ rise in health insurance premiums
- 25%+ increase in transportation costs
- Recruiting and retaining staff in a competitive job market.
- Underfunded legislative mandates

We've already made \$2 million in budget adjustments for 2025–26, including using one time money to prevent cutting programs.

Additional funds are needed to maintain staffing, programs and financial stability.

Delivering on Our Promises

Thanks to the generosity of our community on recent voter-approved measures, balanced with our fiduciary responsibility to our community, we've been able to do the following.

Voter-Approved Measure	Promises	Delivery
Operating Levy 2018-Revoke and replace with a tiered levy. Authority of \$1,020 (2019-2022), \$1,295 (2022-2025), and \$1,570 (2025-2029).	<ul style="list-style-type: none"> • Reduce class sizes district wide • Enhance academic programming • Strengthen safety and security • Build financial stability 	<ul style="list-style-type: none"> • Class Sizes: Since 2019 average class sizes remain at or below metro average. • Academic Programming: Enhanced Advanced Academics (gifted and talented), added courses and opportunities at the high school level to explore business, leadership, and other skills for post-secondary success. New Mahtomedi Middle School schedule with expanded courses in arts, academic skill success, and literacy. • Safety & Security: Installation of cameras, intercoms, badge readers, exterior door alarms, and a visitor management system for secure check-in at our schools. • Financial Stability: Increased fund balance from 4% to 11%
Capital Projects (Tech) Levy 2021-Renewal of Technology Levy for devices, infrastructure, training, tech support, and teaching and learning tools.	<ul style="list-style-type: none"> • Classroom Technology Tools • Infrastructure and Data Security • Teacher and Staff Technology Support 	<ul style="list-style-type: none"> • Classroom Technology: Maintained the Device for Every Learner program that began with COVID-19 grants, and support from MAEF. Every classroom equipped with state of the art technology, including SMARTBoards and computers for instruction. • Innovation & Training: Tech support for educators includes technology mentors in every building and AI training. • Security: The Tech Department has enacted several new security measures after conducting audits of our systems.

Responsible Stewards of Resources

- **State and Federal Funding:** Our district was prudent with COVID-19 State and Federal Funding, knowing it was not permanent funding. **We focused this funding on academic intervention and support programs for students.**
- Our School Board has taken action to lessen tax impact through **bond refinancing.**
- **Finance Awards**
 - The annual financial audit issued the district its highest rating ("unmodified opinion") for the fiscal year ending June 30, 2024.
 - Since 2018, Mahtomedi Public Schools has received the Certificate of Excellence in Financial Reporting for meeting the highest standards for financial reporting and transparency.
- **Community Residential Survey**
 - 76% agree that "during the last couple of years, the Mahtomedi Public School District Administration and School Board have spent tax money effectively and efficiently."
 - 75% agree "the Mahtomedi Public School Board and Administration have spent past voter-approved bond and operating levy funds responsibly."

Election Terminology

When student needs in a school district exceed the current local, state, and federal funding, a school district may pursue a **referendum**.

The term **referendum** is used to describe the overall process of voting/election. **Levy** is a term used to describe the tax request, used commonly with operating and capital requests.

Operating: Funding for operating school district to avoid budget cuts (helps class sizes, keeping teachers, and a savings account for district)

Building Bonds: Funding for building and improving facilities (new facilities and construction-related updates, also includes outdoor spaces like fields).

Capital/Technology: Funding for technology and safety and security facilities updates (new Chromebooks, classroom technology, updates and upgrades to systems)

About the Referendum



Mahtomedi Public Schools will hold a **two-question referendum** on November 4, 2025 — one for **operating revenue** and one for **facility improvements**.

What will be on the ballot?

Question 1: Operating Levy

Requests \$575 per pupil in additional annual revenue starting in 2026–27 to:

- Maintain class sizes
- Ensure excellent academic programming
- Strengthen financial stability

Question 2: Facilities Bond

Proposes a \$28 million investment for:

- Safety and security district-wide
- Critical infrastructure updates
- Learning spaces and modern academic environments
- Performing arts accessibility and functionality
- Athletics, including a turf field and weight room improvements

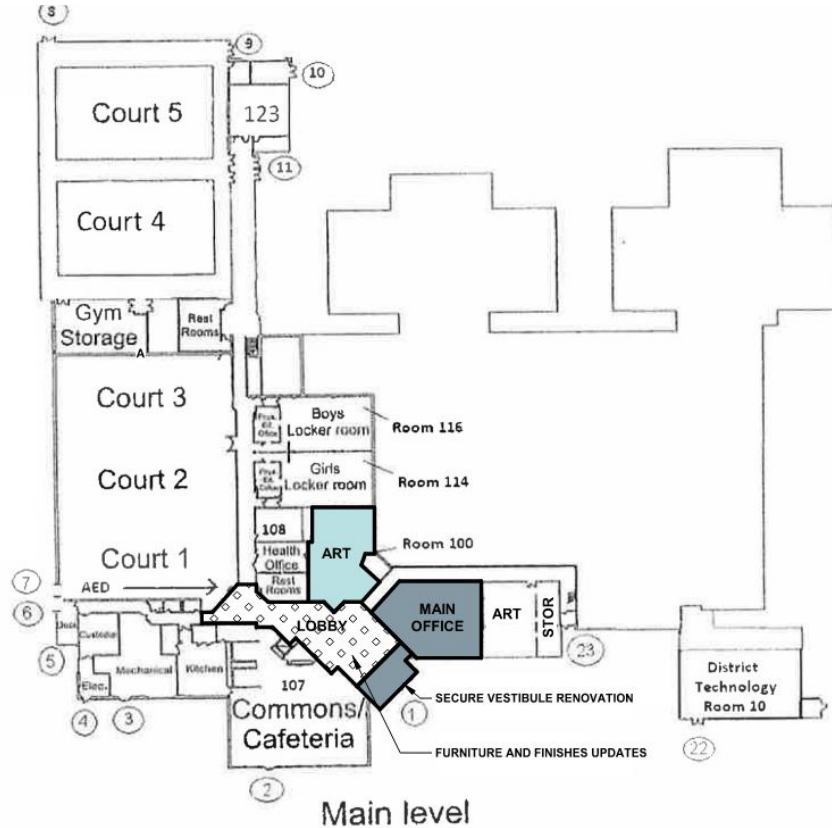
Details of Facilities Proposal

To maintain safe, functional, and future-ready schools, the facility proposal reflects the most immediate needs and greatest student impact. These priorities include:

- Mahtomedi Middle School Safety & Security Improvements, including Front Entrance
- Mahtomedi High School Safety & Security Improvements, including Hallway Circulation Remodel
- Mahtomedi High School Critical Mechanical System Improvement
- Safety & Security Improvements to Wildwood, O.H. Anderson, and Mahtomedi District Education Center
- Mahtomedi High School Innovation Wing Academic Collaborative Space
- Chautauqua Fine Arts Center Disability Access & Seating Improvements
- Mahtomedi High School Band Classroom Improvements
- Athletic Field 1 Turf and Lights
- Mahtomedi High School Weight Room Addition and Remodel

BUILDING DIAGRAM

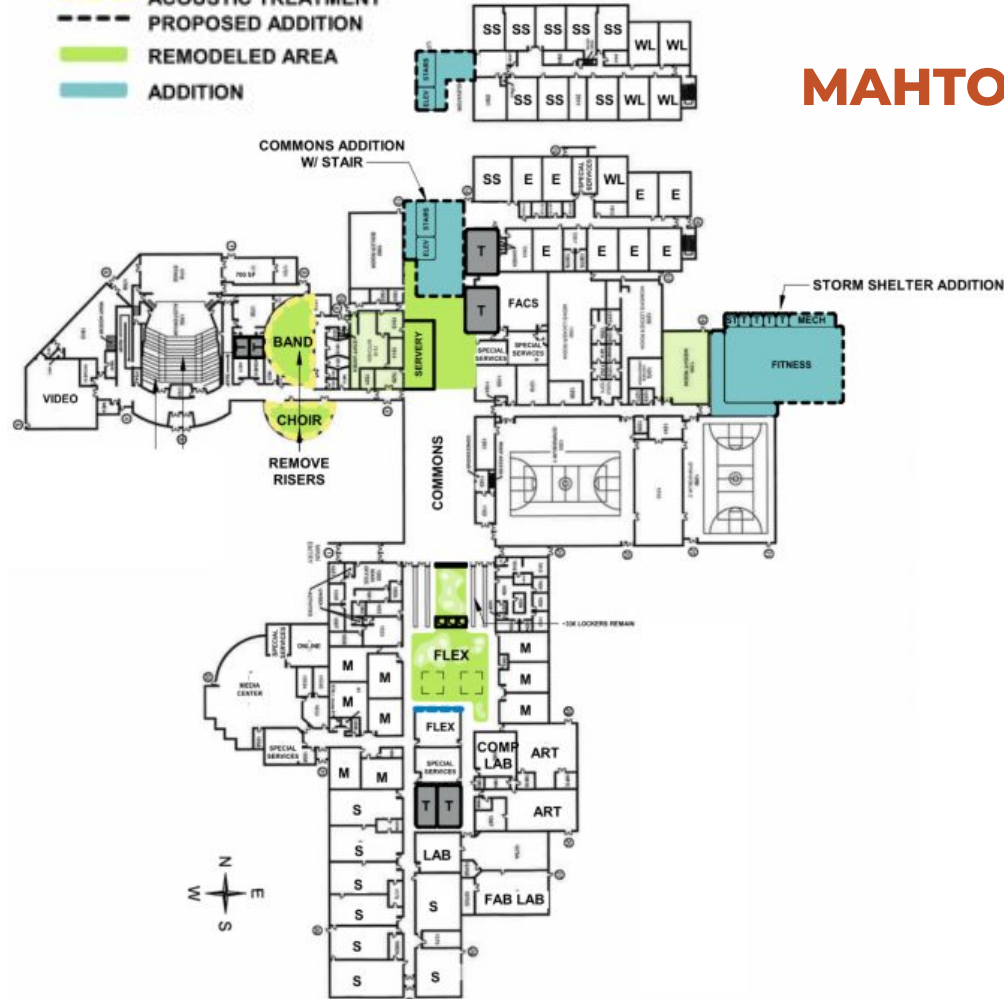
MAHTOMEDI MIDDLE SCHOOL



- ADDED VISIBILITY
- ACOUSTIC TREATMENT
- PROPOSED ADDITION
- REMODELED AREA
- ADDITION

BUILDING DIAGRAM

MAHTOMEDI HIGH SCHOOL



SITE DIAGRAM

ATHLETIC FIELDS



What if the ballot questions do not pass?

Without Operating Levy

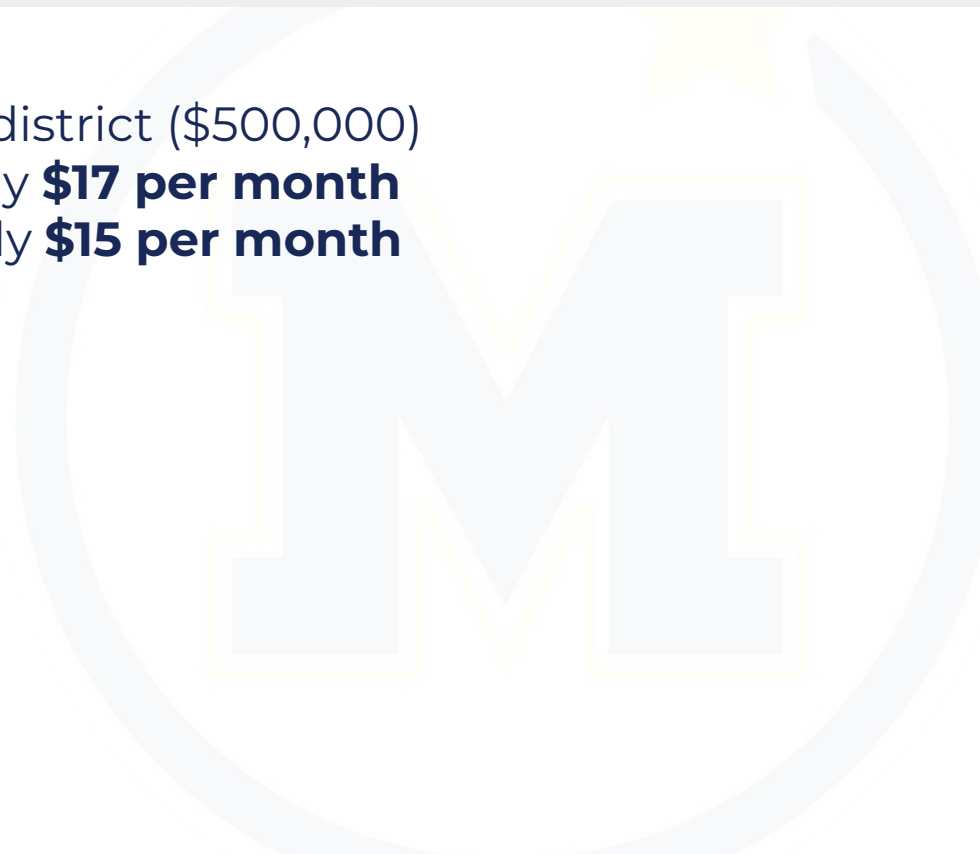
- Class sizes will rise
- Academic programs will be cut
- Staff reductions will be necessary

Without Facilities Bond

- Safety and accessibility upgrades are delayed
- Academic, arts, and athletic spaces remain outdated
- Aging infrastructure continues to put strains on district operations

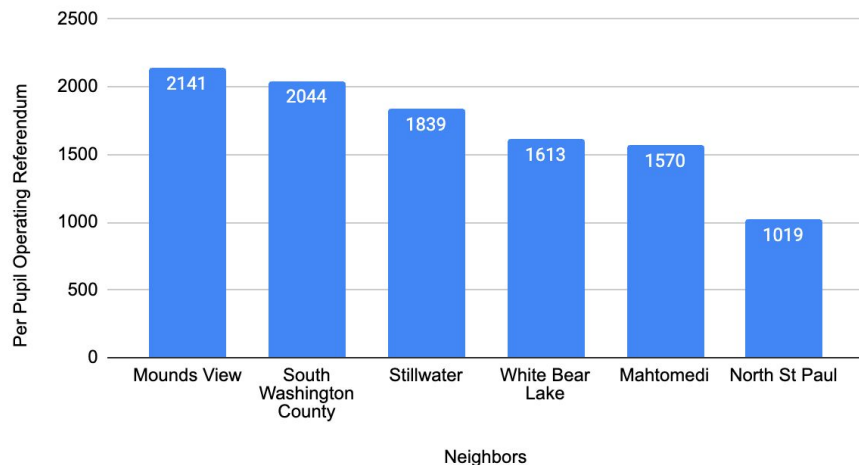
Amount and Tax Impact

On an average priced home in our district (\$500,000) the tax impact will be approximately **\$17 per month for question one** and approximately **\$15 per month for question two**.

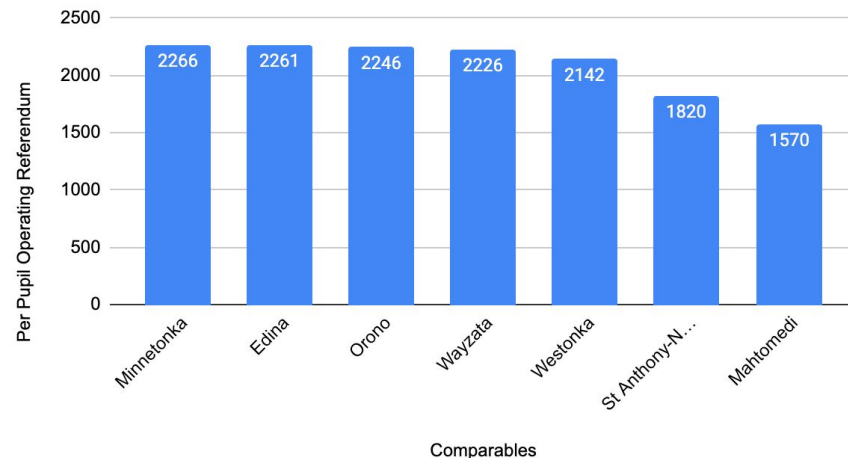


How do we compare to other districts?

Per Pupil Operating Referendum vs. Neighbors



Per Pupil Operating Referendum vs. Comparables



District's Role: Inform



The District's responsibility during a school election is to inform.
District resources can say "vote" but not vote yes or no.

Our role is to inform about the details of the referendum: what are we asking, why are we asking, what happens if the referendum passes or fails, and how to vote.

Election Website & Learning Sessions

Election Website

www.mahtomedi.k12.mn.us/elections

Community Referendum Learning Sessions

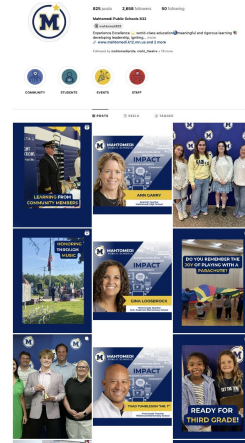
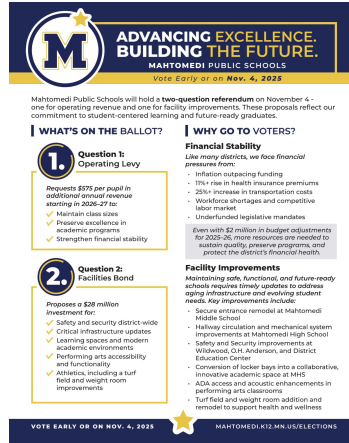
5:30 p.m. | Mahtomedi HS Media Center

Tours of MHS areas and Informational Overview

- July 16
- August 6
- September 9
- September 23
- October 7
- October 29



District: Outreach & Communication



In addition to the website and in-person learning sessions, the District will use a variety of communication methods and outreach to inform voters.

- Print-mailers, handouts, and submissions to the newspaper
- Social Media
- Video
- School Community Communication-Email, eNews, SMS
- Attending and Holding Community Outreach Events

Early Voting & Day of Voting

Early Voting and **Absentee Voting** are terms that are used interchangeably. All eligible Minnesota voters can vote early, either in person or by mail, without needing to provide a reason.

Early Voting starts on September 19.

www.sos.mn.gov/elections-voting/other-ways-to-vote/vote-early-by-mail

Washington County will publish voting locations and early voting centers closer to the election.

What about College Students?

College Students should register to vote from the address they currently consider home. For many students, this is likely a school address or a parent's house.

<https://mnvotes.sos.mn.gov/>

SEP**19**

Vote by mail or in person
September 19 through
November 3

NOV**4**

Election Day