



Update: Graduation Rates



Duluth Public Schools
Graduating Class of 2018

Tannyea Lake, PhD, NCSP
Director of Assessment and Evaluation

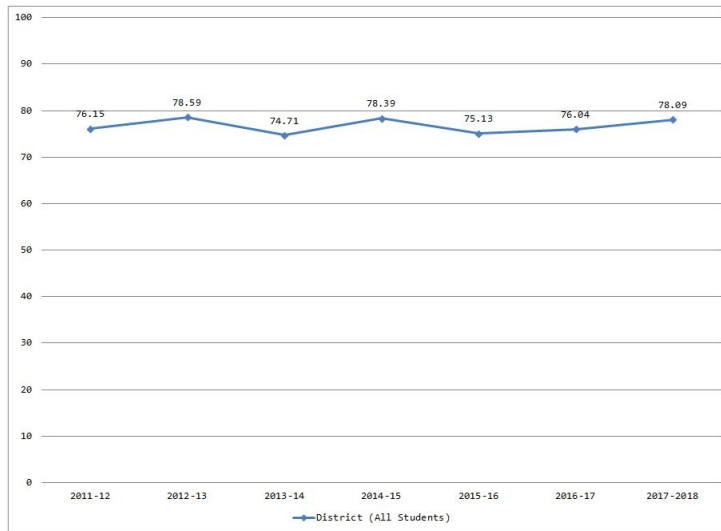
Definition

Graduation rates are based on a cohort of first time 9th grade students plus transfers in minus transfers out of the cohort within the four year period

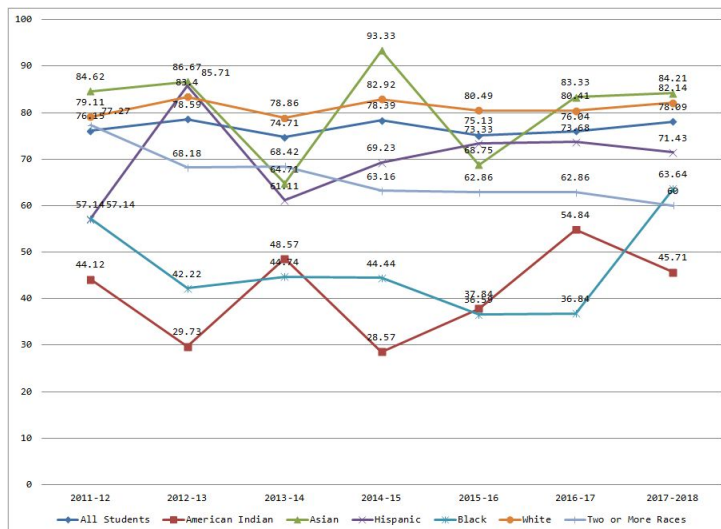
Care/treatment/correctional facilities are not included in the district rate

All rates are reported as four-year on-time rates unless indicated otherwise

Graduation Rates - All Students

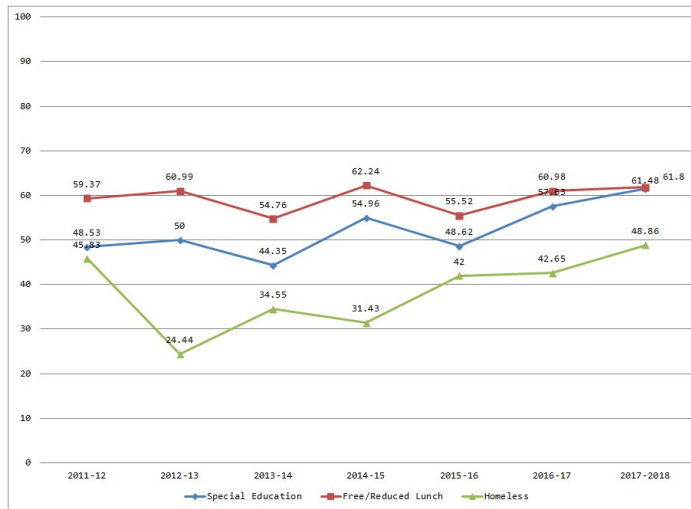


Graduation Rates - Ethnicity



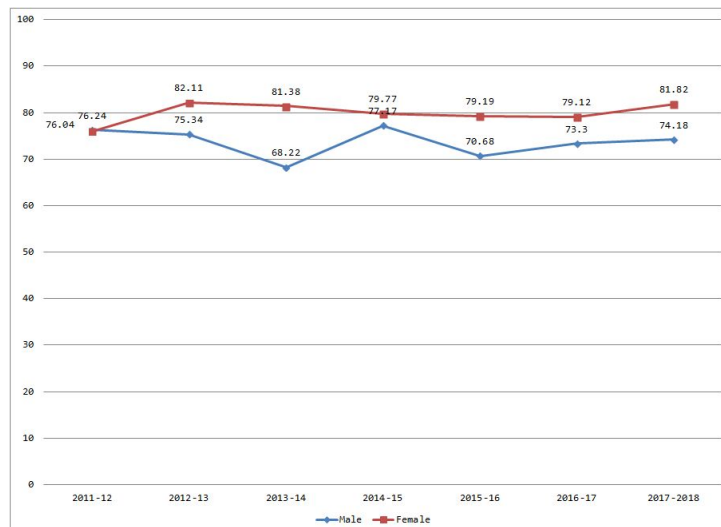
90% = goal for All Students
85% = goal for each student group

Graduation Rates - Special Populations



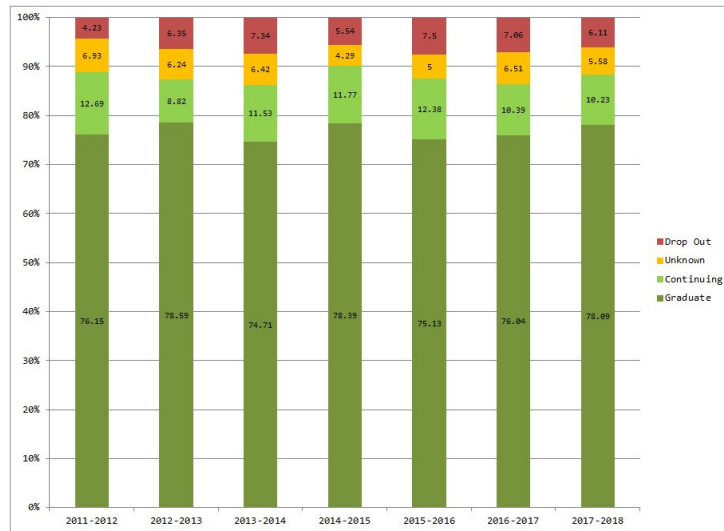
5

Graduation Rates - Gender



6

History by End Code



7

Cohorts Tracked Over Time - District

Cohort Year	Graduated in Four Years	Graduated in Five Years	Graduated in Six Years	Graduated in Seven Years
2011-2012	76.15	77.87	80.18	82.10
2012-2013	78.59	80.07	82.1	82.72
2013-2014	74.71	78.5	80.41	80.67
2014-2015	78.39	82.09	82.95	84.15
2015-2016	75.13	78.43	79.90	TBD
2016-2017	76.04	80.16	TBD	TBD
2017-2018	78.09	TBD	TBD	TBD

8

Appendices

Note: Numbers reported as percents unless indicated otherwise
 Cells with fewer than 10 students are suppressed to maintain data privacy

All Students	2011-12	2012-13	2013-14	2014-15	2015-16	2016-17	2017-18
State	78.42	80.43	81.36	82.08	82.52	82.68	83.20
District	76.15	78.59	74.71	78.39	75.13	76.04	78.09
Denfeld	84.16	82.37	76.05	73.42	73.86	80.36	73.73
East	90.86	90.85	89.77	93.16	93.61	92.94	93.72
ALC	28.79	24	18.27	35.58	34.15	26.28	43.17
Rockridge Academy	11.54	35.00	17.65	20.69	41.38	28.57	39.29

District	2011-12	2012-13	2013-14	2014-15	2015-16	2016-17	2017-18
All Students	76.15	78.59	74.71	78.39	75.13	76.04	78.09
American Indian	44.12	29.73	48.57	28.57	37.84	54.84	45.71
Asian	84.62	86.67	64.71	93.33	68.75	83.33	84.21
Hispanic	57.14	85.71	61.11	69.23	73.33	73.68	71.43
Black	57.14	42.22	44.74	44.44	36.59	36.84	63.64
White	79.11	83.4	78.86	82.92	80.49	80.41	82.14
Two or More Races	77.27	68.18	68.42	63.16	62.86	62.86	60.00
Special Education	48.53	50	44.35	54.96	48.62	57.63	61.48
Free/Reduced Lunch	59.37	60.99	54.76	62.24	55.52	60.98	61.80
Male	76.24	75.34	68.22	77.17	70.68	73.3	74.18
Female	76.04	82.11	81.38	79.77	79.19	79.12	81.82
Homeless	45.83	24.44	34.55	31.43	42.00	42.65	48.86

11

Denfeld High School	2011-12	2012-13	2013-14	2014-15	2015-16	2016-17	2017-18
All Students	84.16	82.37	76.05	73.42	73.86	80.36	73.73
American Indian	75	53.85	80	30	35	73.33	46.67
Asian							
Hispanic				72.73			
Black	62.5	50	57.14	57.14	42.86	55.56	78.57
White	86.55	85.6	77.78	77.37	80.66	84.66	77.71
Two or More Races		84.62			71.43	71.43	66.67
Special Education	54.72	56.67	50.82	45	33.33	61.82	56.90
Free/Reduced Lunch	73.49	72.96	64.38	62.42	62.07	72.55	64.47
Male	84.02	75.76	67.97	69.85	65	74.8	72.95
Female	84.31	89.8	83.7	78.22	82.64	87.63	74.74
Homeless	63.16	38.46	53.33	25	45	60.71	53.13

12

East High School	2011-12	2012-13	2013-14	2014-15	2015-16	2016-17	2017-18
All Students	90.86	90.85	89.77	93.16	93.61	92.94	93.72
American Indian							
Asian							90.00
Hispanic							
Black	83.33	81.82	69.23	62.5	66.67		83.33
White	91.38	91.14	91.09	95.06	95.43	95	94.36
Two or More Races					90.91	76.92	
Special Education	70.27	61.29	54.76	74.36	68.75	65.79	75.61
Free/Reduced Lunch	79.57	78.07	71.82	83.64	80.65	80.95	82.42
Male	89.39	88.64	85.64	94.21	90.23	92.82	89.94
Female	92.53	93.2	93.88	92.11	96.31	93.06	96.71
Homeless				50			77.78

13

Area Learning Center	2011-12	2012-13	2013-14	2014-15	2015-16	2016-17	2017-18
All Students	28.79	24	18.27	35.58	34.15	26.28	43.17
American Indian	9.09	5.56			20	18.18	18.18
Asian							
Hispanic							
Black	27.27	12.5		13.33	6.67	13.13	38.89
White	31.37	32.14	22.73	40.54	38.84	27.33	46.67
Two or More Races					20		27.27
Special Education	26.32	6.25	5.26	41.67	56.52	36	50.00
Free/Reduced Lunch	28.43	20.99	19.32	32.5	27.43	25.23	40.74
Male	26.15	26	16.13	35.19	40.23	19.72	40.00
Female	31.34	22	21.43	36	27.27	33.33	46.38
Homeless	29.41	9.52	12.5	25	36.36	23.33	27.78

14

Rockridge Academy	2011-12	2012-13	2013-14	2014-15	2015-16	2016-17	2017-18
All Students	11.54	35.00	17.65	20.69	41.38	28.57	39.29
American Indian							
Asian							
Hispanic							
Black	14.29	33.33		36.36	50	23.08	20.00
White				15.38	38.46		60.00
Two or More Races							
Special Education	7.14	27.27		23.53	41.67	25	33.33
Free/Reduced Lunch	11.54	35	17.65	20.69	41.38	28.57	39.29
Male	9.09	31.25	20	21.74	41.67	25	40.00
Female							
Homeless							

Academic Excellence Online	2011-12	2012-13	2013-14	2014-15	2015-16	2016-17	2017-18
All Students							71.43
American Indian							
Asian							
Hispanic							
Black							
White							71.43
Two or More Races							
Special Education							
Free/Reduced Lunch							
Male							
Female							
Homeless							

Arrowhead Academy	2011-12	2012-13	2013-14	2014-15	2015-16	2016-17	2017-18
All Students		10.53		9.52	7.41		5.26
American Indian				10.00			
Asian							
Hispanic							
Black							
White					4.76		
Two or More Races							
Special Education					6.67		
Free/Reduced Lunch		11.11		9.52	7.69		5.56
Male		11.11		10.53	7.69		6.25
Female							
Homeless							

Cohorts Tracked Over Time - Denfeld

Cohort Year	Graduated in Four Years	Graduated in Five Years	Graduated in Six Years	Graduated in Seven Years
2011-2012	84.16	87.54	88.18	88.82
2012-2013	82.37	84.92	86.05	85.76*
2013-2014	76.05	80.8	81.93	81.93
2014-2015	73.42	82.03	82.79	82.41
2015-2016	73.86	79.04	80.18	TBD
2016-2017	80.36	86.85	TBD	TBD
2017-2018	73.73	TBD	TBD	TBD

*Additional student added to cohort in 2014-2015, but did not graduate in 7 year timeframe.

Cohorts Tracked Over Time - East

Cohort Year	Graduated in Four Years	Graduated in Five Years	Graduated in Six Years	Graduated in Seven Years
2011-2012	90.86	93.91	94.71	94.71
2012-2013	90.85	94.87	95.10	95.10
2013-2014	89.77	92.63	93.92	93.92
2014-2015	93.16	94.65	94.65	94.65
2015-2016	93.61	95.12	95.37	TBD
2016-2017	92.94	93.79	TBD	TBD
2017-2018	93.72	TBD	TBD	TBD

Number of On-Time Graduates Out of Total in 2017-2018, By School, By Student Group

	Academic Excellence Online	Area Learning Center	Arrowhead Academy	Denfeld	East	Rockridge Academy
All Students	10/14	60/139	1/19	160/217	358/382	11/28
American Indian		2/11		7/15		
Asian					9/10	
Hispanic						
Black		7/18		11/14	10/12	
White	10/14	42/90		122/157	318/337	6/10
Two or More Races		3/11		12/18		
Special Education			10/20	33/58	31/41	4/12
Free/Reduced Lunch		44/108	1/18	98/152	75/91	11/28
Male		28/70	1/16	89/122	152/169	10/25
Female		32/69		71/95	206/213	
Homeless		10/36		17/32	14/18	

Contact Information

Tawnyea Lake - PhD, NCSP
Director of Assessment and Evaluation

218.336.8713

tawnyea.lake@isd709.org

Additional data (including raw numbers) available on Minnesota Report Card:

<http://rc.education.state.mn.us/>

MDE Website: Data Center > Data and Analytics > Students > Graduation Rates