

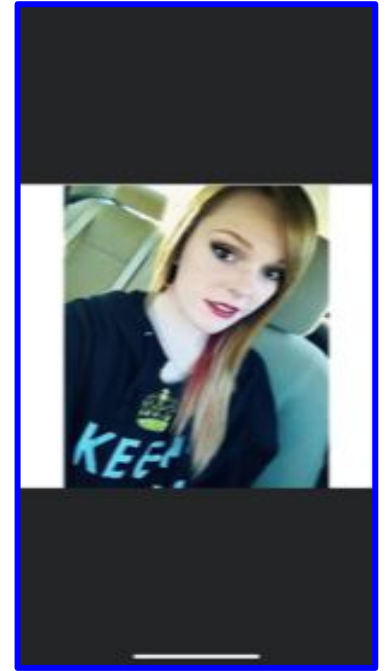
Approval of Nicole Silva Memorial at BRS

Woodbridge Board of Education

September 20, 2021

Jonathan S. Budd, Ph.D., Superintendent

Cheryl Kiesel, Director of Special Services



Background

- BRS Teachers' Assistant Nicole Silva, employee since 2011, passed away tragically in June 2021
- Interest in memorializing Nicole at BRS occurred nearly immediately
- BOE Policy 3280 authorizes the BOE to approve contributions of gifts in excess of \$1,000 in value
- Staff committee was formed to brainstorm and reach consensus on an appropriate memorialization of Nicole to focus donations

Background

- Committee was chaired by Cheryl Kiesel, Director of Special Services
- Committee included Nicole's mother, Judy Silva, Admin. Asst. at BRS
- 30 staff members convened, of all different grade levels and roles

Sensory Pathway: An Innovation Nicole Had Mentioned

- Goal: To provide a sensory experience to help regulate elementary school students and refocus their minds and attention
- [CBS Kids News video profile](#)

Various Sensory Pathways

- Going on a Bear Hunt (\$1,500)
- Loopy Ladybug (\$425)
- Flower Push Wall (2x \$275)

Mosaic to Complement the Pathway

- Members of the BRS community will contribute small clay pieces to be assembled in a beautiful design mosaic near the sensory pathway(s)
- BRS art teachers will help create the mosaic
- A small plaque will identify the path and mosaic in memory of Nicole
- Mosaic cost = ~\$300



Donation Process & Next Steps

- Following BOE approval of contributions toward this gift, the project will be publicized to community members via the staff committee
- Cheryl & the Business Office will organize donations appropriately
- No special cleaning or maintenance will be required for either the sensory pathway(s) or the mosaic
- Presentation of final installation to BRS community & BOE