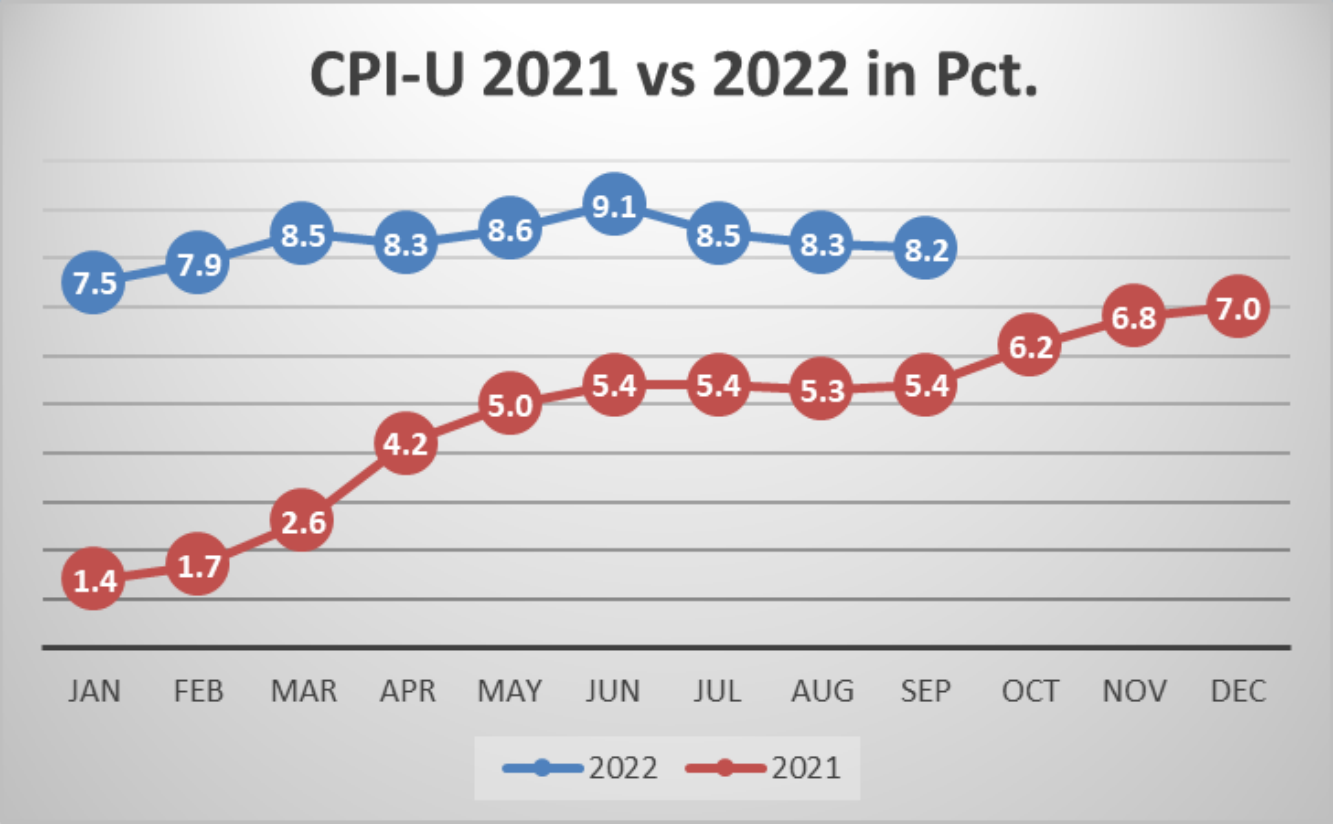


CPI-U



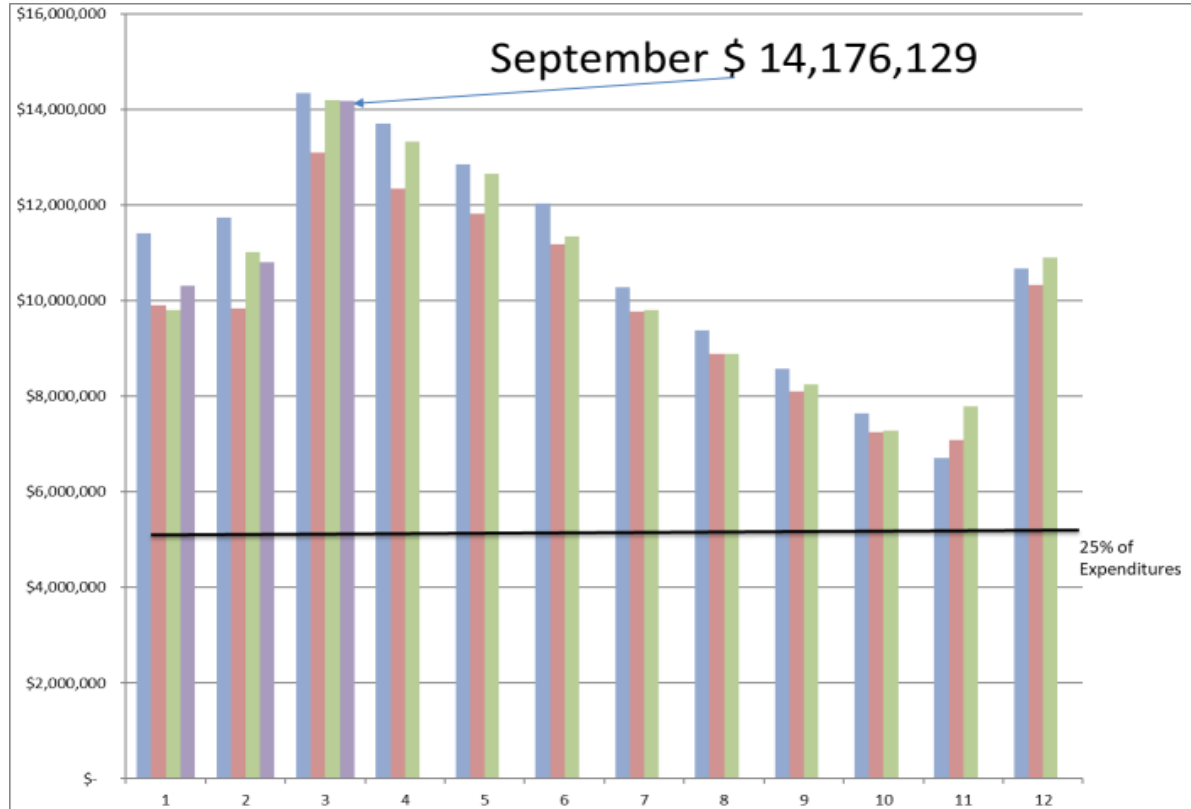
Fund Balance- September 2022

September 2022	Revenue			Expenses			Fund Balances		
	FY23 Budget	FY23 Actual	% Budget	FY23 Budget	FY23 Actual	% Budget	Balance as of 7/1/22	Balance as of 09/30/22	+/-
Fund Operational									
10- Education	\$ 15,955,462	\$ 5,789,166	36.3%	\$ 16,249,516	\$ 2,926,220	18.0%	\$ 5,738,965	\$ 8,601,911	\$ 2,862,946
20- Oper & Main	\$ 2,157,309	\$ 923,838	42.8%	\$ 1,926,132	\$ 683,017	35.5%	\$ 2,474,761	\$ 2,715,582	\$ 240,821
40- Transportation	\$ 883,561	\$ 271,938	30.8%	\$ 944,257	\$ 114,566	12.1%	\$ 359,379	\$ 516,751	\$ 157,372
50- IMRF/SS	\$ 628,201	\$ 284,671	45.3%	\$ 523,826	\$ 104,829	20.0%	\$ 356,224	\$ 536,066	\$ 179,842
70- Working Cash	\$ 144,553	\$ 51,177	35.4%	\$ -			\$ 943,097	\$ 994,274	\$ 51,177
TOTAL	\$ 19,769,086	\$ 7,320,790	37.0%	\$ 19,643,731	\$ 3,828,632	19.5%	\$ 9,872,426	\$ 13,364,584	\$ 3,492,158
Net Operational Position-ISBE							\$ -		\$ 3,307,316
Fund Non-Operational							\$ -		
30- Debt Service	\$ 319,520	\$ 142,116	44.5%	\$ 310,300	\$ 12,604	4.1%	\$ 221,157	\$ 350,669	\$ 129,512
60- Capital Projects	\$ 2,000	\$ 1,375	68.8%	\$ 1,152,000	\$ 347,557	30.2%	\$ 807,058	\$ 460,876	\$ (346,182)
Total	\$ 321,520	\$ 143,491	44.6%	\$ 1,462,300	\$ 360,161	24.6%	\$ 1,028,215	\$ 811,545	\$ (216,670)
							\$ -		
Grand Total	\$ 20,090,606	\$ 7,464,281	37.2%	\$ 21,106,031	\$ 4,188,793	19.8%	\$ 10,900,641	\$ 14,176,129	\$ 3,275,488

Financials by Revenue Source and Object (21 %)

August 2022- Revenues						
<i>Source</i>	Budget FY23	FY23 YTD	FY22 YTD	Change	% Budget	% Change
Property Taxes	\$ 14,122,941	\$ 6,224,791	\$ 6,443,773	\$ (218,982)	44.08%	-3.4%
Other Local Sources	\$ 1,581,800	\$ 317,340	\$ 142,831	\$ 174,509	20.06%	122.2%
State	\$ 2,506,365	\$ 407,224	\$ 467,749	\$ (60,525)	16.25%	-12.9%
Federal	\$ 1,879,500	\$ 520,925	\$ 431,563	\$ 89,362	27.72%	20.7%
All Funds	\$ 20,090,606	\$ 7,470,280	\$ 7,485,916	\$ (15,636)	37.18%	-0.2%
Operational Funds	\$ 19,769,086	\$ 7,326,789	\$ 7,485,539	\$ (158,750)	37.06%	-2.1%
August 2022- Expenses						
	Budget FY23	FY23 YTD	FY22 YTD	Change	% Budget	% Change
Salaries	\$ 10,501,948	\$ 1,658,532	\$ 1,566,933	\$ 91,599	15.79%	5.8%
Benefits	\$ 3,358,068	\$ 506,598	\$ 476,010	\$ 30,588	15.09%	6.4%
Purchased Services	\$ 2,266,540	\$ 760,624	\$ 501,078	\$ 259,546	33.56%	51.8%
Supplies	\$ 863,575	\$ 145,112	\$ 291,217	\$ (146,105)	16.80%	-50.2%
Capital Outlay	\$ 1,150,000	\$ 365,602	\$ 30,041	\$ 335,561	31.79%	1117.0%
Other Objects	\$ 2,633,900	\$ 553,814	\$ 417,529	\$ 136,285	21.03%	32.6%
Non-Capitalized Equipment	\$ 332,000	\$ 198,512	\$ 221,958	\$ (23,446)	59.79%	-10.6%
Termination Benefits	\$ -	\$ -	\$ 63,325	\$ (63,325)		-100.0%
All Funds	\$ 21,106,031	\$ 4,188,796	\$ 3,568,091	\$ 620,705	19.85%	17.4%
Operational Funds	\$ 19,643,731	\$ 3,828,635	\$ 3,553,904	\$ 274,731	19.49%	7.7%
Net Operational Position	\$ 125,355	\$ 3,498,154	\$ 3,931,635	\$ (433,481)		

Fund Balance History



State Delinquency

