

DENTON ISD HEAD START PROGRAM



Community Assessment

Prepared By

Mrs. Angela Hellman
H.S. Program Director

Mary Beth Bowman
Education Specialist

Dr. Johnnie Pettigrew
Disabilities/Mental Health Specialist

Kay Hill
Health Specialist

Lisa Sutton
ERSEA/Social Services Specialist

Sarahi Romero
Social Services Assistant

Julia LoSoya
Parent, Family, Community Engagement Specialist

Robbie Franklin
Safety, Facilities, Materials, Equipment, & Transportation Specialist

Elizabeth Raftery
Nutrition Specialist

Approved by Denton ISD Policy Council 1-18-2019 Denton ISD Board _____

TABLE OF CONTENTS

Executive Summary.....	3
Section 1 – Demographics and Service Area Data.....	5
Section 2 – Education.....	10
Section 3 –Disabilities and Mental Health	13
Section 4 – Health and Nutrition.....	15
Section 5 – Social Services.....	30
Section 6 - Parent, Family Identified Needs & Community Resources.....	37
Section 7- Community Strengths and Identified Needs.....	45

Executive Summary

This Annual Community Assessment was conducted during October- December 2018 for the Denton ISD Head Start Program. This assessment covers the target area for the Head Start Program which is the Denton ISD school district which covers 180 square miles.

The Program Director, the Education Specialist, Policy Council members/parents, Health Specialist, Disabilities/Mental Health Specialist, ERSEA/Social Services Manager & Assistant, Parent/Family/Community Engagement Specialist, Nutrition Specialist, Safety/Facility Manager & Head Start office staff, gathered and formulated information. Research was done through various community agencies and programs to collect the data as well as utilizing online web resources. These individuals worked with the Program Director to process this report.

The data included, but was not limited to information from the following areas:

- Demographic data (US Census Bureau)
- Other child development programs for Head Start eligible children
- Data on estimated number of children in community eligible for Head Start Program
- Data regarding the education, health, nutrition, and social services needs of Head Start children
- Resources in the community that could be used to address the needs of eligible children and their families
- Program Community Partnerships and Business Adopters Listing
- Significant changes in the community which could affect Head Start eligible children and their families.
- (PIR) Program Information Report data 2017-18
- 2017-18 Ann Windle Annual Report
- United Way Community Assessment Data
- Templeton Data
- Data from the City of Denton

*All Appendices of data used will be kept on file.

A review of data from the 12 areas above shows a fast-growing Denton community with sufficient resources. Unfortunately, the findings from the facts in this Community Assessment indicate that the Head Start Program is serving only approx. 29.92% of the eligible population in this targeted area. The current program priority waiting list further substantiates this finding. The number of children on this list currently that meet poverty guidelines is 35. There are an additional 32 families on the list within the 135%-150% range.

DISD continues to see the critical need for program expansion for pre-k age students. The original Head Start program within DISD started as a summer program back in 1965. It eventually evolved into a full-day program following the district school year calendar. The location of this program changed buildings over the course of the years. Since the construction of the Ann Windle School for Young Children (AWSYC) building in 2001, three classes were added to the Head Start Program. These class additions maxed out the current building. Out of our 18 classrooms, we now have 11 classrooms that service Head Start students. Six of these are English Classes and 5 are Bilingual classes. Our funded enrollment is 193 students. Our center has other programs at our location as well: Pre-K, Preschool Program for Children with Disabilities (PPCD), and Deaf Education. Last year, we serviced a total of 410 pre-k age students within our different programs at our site. DISD has a second Early Childhood facility that can house approximately 420 preschool students. Some of the Elementary campuses house pre-k age students along with some neighboring child care partnerships. Majority of these program options are half-day programs. To date, DISD has 1,278 pre-k age students enrolled in a DISD program.

In summary, there is a critical need for continuing the Denton ISD full-day Head Start program in this community. The need for expansion of this program is also noted which would enable us to serve the students remaining on our priority list. The current facility we are housed in, was designed for an additional wing in the blueprints. The construction of an additional wing in the future would help by providing us with more room to expand our Head Start program. This of course would be contingent on applying for and receiving expansion funds.

SECTION 1: *Demographics and Service Area Data*

Texas and National - Demographic Data

- Demographic data shows the Texas population continues to show a steady increase – a 12.6% increase over seven (7) years (2010-2017). The 2017 estimate is 28,304,596.
- The percentage of population in the poverty level in Texas is approximately 14.7%, compared to 12.3% nationally. The median household income is approximately \$54,727, compared to \$55,322 nationally.
- The ethnic breakdown in Texas is: White/Caucasian-79.2%; White/Non-Hispanic- 42%; Hispanic – 39.4%; Black/African American- 12.7%; Asian-5%, Two or more races 2 %, American Indian-1.0%, Native Hawaiian/Pacific Islander- 0.1%
- The education levels of Texans show approximately 82.3% with high school diplomas, compared to 87% nationally. 28.1% of Texans have a bachelor's degree or higher, compared to 30.3% nationally.
- The percentage of children under the age of 5 in Texas, is 7.2%.
- Language other than English spoken in the home in Texas is 35.2%, compared to 21.1% nationally.
- There are 2.84 persons per household in Texas, compared to 2.64 nationally.

City and County - Demographic Data

- The city population increased approximately 17.1% from 2010-2017. The estimated population is 136,268.
- The median household income for the city is approximately \$50,487, with approximately 19.5% of all families below poverty level. The city of Denton has the highest poverty percentages when compared to the other cities within the County (39%).
- 22.8% of the city's population speak a language other than English in the home. The most common spoken language other than English is Spanish.
- The estimated percentage of families below the poverty line with a female householder, no husband present, with related children under the age of 5 is 39.8 %.
- Persons under 5 years of age is 5.4%
- Ethnic breakdown is: White 79.3%, White/not Hispanic or Latino 59.9%, African American 10.1%, American Indian .5%, Asian 3.9%, Hispanic 23.4%, Native Hawaiian/Other Pacific Islander 0.1%, Two or more races 2.4%.
- The percentage of teenage parents under the age of 17 for Denton County is 25.3%. There were 96 births to women under the age of 17 in Denton County in 2014. 50% of these are living in poverty.
- Education: High School graduate or higher 89.9%, Bachelor degree or higher 36.9%.
- Persons per household is 2.62, average family size is 2.79. Median age is 28.5.
- The point-in-time homeless count per year was 176 for Denton County and 67 were in the city of Denton. The highest reason for homelessness was due to unemployment, at 17.9%. Homeless count in 2017 for Denton County was estimated to be 228 on a given day.
- Persons 16 years and older in the labor force is 72.3%.
- In Denton County, 5,236 Kindergarteners (62%) for the 2015-16 school year didn't attend school district Pre-K the previous year.

School District – Service Area Data

- DISD is currently one of the fastest growing school districts in Northern Texas.
- This year, the district has enrolled over 30,206 students.
- Community volunteers spend more than 107,478 hours in the schools every year. The Head Start program at Ann Windle recorded 38,715.35 hours for the 2017-18 school year.
- According to Templeton Demographics, projections show housing starts are up 37% from 2010. By 2020, DISD will reach 31,000 students. Within 10 yrs., the district is projected to grow by 6,172 students.
- The district currently has 4 comprehensive high schools, 8 middle schools, 23 elementary schools, 2 early childhood centers, an alternate High School, and an Advanced Technology Complex. Our Head Start program is housed in one of the Early Childhood centers. The DISD Head Start program first began in 1965.
- To date, DISD serves 665 identified homeless students under McKinney Vento and 23 of those are at Ann Windle.
- PIR data for Ann Windle 2017-18 shows that 36 of our parents are not high school graduates.
- PIR data for Ann Windle 2017-18 shows that out of our single parent families 68 define the parent figure as Mother.



The Denton Independent School District has been committed to providing quality education since it was founded in 1882. The district – located about 25 miles north of Dallas and Fort Worth – encompasses 180 square miles and contains all or parts of 18 cities, communities, or major developments.

As the county seat for Denton County, the city and school district has a rich history. In 1882, a \$15,000 bond election was passed to finance the construction of Denton's first public school. The structure was three stories and made of red brick. The district has continued to grow – and currently is one of fastest-growing school districts in North Texas.

Denton ISD includes four comprehensive high schools, eight middle schools, 23 elementary schools, two early childhood centers, an alternative high school, an advanced technology complex and other specialized schools and centers. The Union Park Elementary School is scheduled to open for the 2019-2020 year as the district's 24th Elementary school.

In the past 12 years, the district has passed four bond packages – totaling more than 1.3 billion. The support of the community in which the district serves is evident in the passage of these bond packages. They have averaged passing with a 60 to 80 percent passage rate.

Not only does the school district community support outstanding school facilities, it demands excellence in its educational programs. It is truly an educational community where citizens are highly engaged in education – especially with two major universities and a community college within its boundaries.

The higher education facilities include:

- University of North Texas
- Texas Woman's University
- North Central Texas College

The presence of three institutions of higher learning within the district sets a professional learning climate that engages everyone in the community. For example, with UNT boasting one of the best music programs in the nation, the

district is one of only 10 percent of school districts nationwide that offers orchestra at the elementary level.

With its huge geographical area of 180 square miles, the Board and district staff work together as a cohesive team to help bridge the gap between these numerous cities, towns, communities and major developments. Those areas include:

- Argyle
- Aubrey
- Bartonville
- Copper Canyon
- Corinth
- Cross Oak Ranch
- Cross Roads
- Denton
- Double Oak
- Lantana
- Little Elm
- Oak Point
- Paloma Creek
- Prosper
- Providence Village
- Robson Ranch
- Sandbrock Ranch
- Savannah
- Shady Shores

Although it covers a large area, Denton ISD's unique "small town community" environment separates it from the growing, larger suburban school districts within the Dallas-Fort Worth Metroplex. Denton ISD is able to offer all the programs available from larger school districts, but maintains "a small community climate."

SECTION 2: Education

Other Community Child Care Centers/Programs:

ABC Preschool and Child Care Center	940-565-0095
Abilitrees Montessori	940-243-4343
Adventureland Early Learning Center	940-808-1300
Alpha Academy at Oakmont	940-600-1836
Alpha Christian Academy	940-484-8337
Alphabet Academy	940-514-1174
Borman Elementary	940-369-2500
Childcare Network	940-383-5800
Children's Corner Preschool	940-387-5561
Children's Day Out	940-382-0074
Children's Place at St. Andrews	940-387-7716
Cornerstone Cooperative Preschool	940-808-1211
Countryside Montessori	940-483-1133
Cross Oaks Elementary	972-347-7100
Debbi Moseley	940-483-1133
Denia Recreation Center	940-349-8285
Denton Calvary Academy	940-320-1944
Denton Christian Preschool	940-383-3332
Denton City County Day School	940-382-6485
Farmers PlayDay	940-382-3627
First Baptist Church Child Development Center	940-382-2570
First United Methodist	940-382-0074
Florence Slusarski	940-368-4402
Fred Moore Day Nursery School	940-387-8214
Fred Moore Day Nursery School (Gonzalez location)	940-369-2341
Gonzalez School for Young Children	940-369-4350
Jennifer Deal	940-230-4141
Karen Fipps	940-243-4045
Kathy Shilling	940-367-6805
Katrina Rogers	972-829-1542
Kay's Kids In-Home Daycare	940-595-3571
KidZone Academy at GracePointe Church	940-808-0834
Little Steps Daycare	940-565-1506
Love and Learn Home Daycare	614-551-0975

Margaux Hardin	903-905-3880
Marisol Cates	469-682-8510
Martin Luther King JR Rec Center	940-349-8575
Miss Pam's Toddler Care	940-387-2717
Nana Cheryl's Christian Day Care	214-663-8260
Nawny's House	940-591-3037
New Generation Child Care Center	940-387-4200
North Lakes Preschool Program	940-349-8287
Savannah Elementary	972-347-7400
Selwyn College Preparatory School	940-382-6771
Sheri Turnbull	754-802-0190
Springbok Academy	940-381-1861
St. Paul Christian Learning Center	940-387-6651
Starrs House	940-300-2579
Stephens Elementary	940-369-0800
Sunburst Kids	940-239-5004
Tamara Jackson	940-514-1115
Tammy Laughlin	940-382-5585
Terri Hayley	940-765-0940
Terry's Treehouse Learning Center	940-243-2273
The Kids Zone Learning Center	940-218-6183
The Robin's Nest Daycare	940-595-4808
Thrive Child Development	214-762-0439
Tiny Imitators	940-273-0163
Tiny Tykes Learning Center	940-483-0521
Treehouse Academy of Corinth	940-498-0133
Trinity Learning Center	940-566-5682
UNT Child Development Center	940-565-2555
Virginia Gallian Development Center	940-369-3981
Walsie Rodriguez	940-320-3767
Wellspring Christian Academy	940-591-9900
Wendy Woods	940-591-0328

*These centers are other educational opportunities within our community that serve children ages 3 and 4. Ann Windle has a partnership with Denton City County Day School (DCCDS). Some of our students that need wrap around care before or after our program receive transportation from DISD to and from there. We currently have 28 students utilizing this partnership, 13 of which are in our Head Start program. Our district has created two more partnerships with

neighboring Child Care Centers- Kids Zone and Treehouse Academy. DISD has placed a Certified Pre-K teacher at these centers with a supporting paraprofessional. We currently have 50 pre-k students participating in these partnership sites. From the list of available Community Centers above, 4 are known to have high quality credentials (TRS 4 Star ratings). These are Fred Moore Day Nursery, Kids Corral, Virginia Gallian Child Development Center, and Tree House Academy. Gonzalez School for Young Children is another Early Childhood campus for Denton ISD and is high quality. Some of the centers take financial assistance or work on a sliding pay scale, and some do not. We are the only center that serves Head Start students. The following sites are available to our families for after school pick-up from Windle for wrap around care: Tender Love & Care, The Kid Zone Learning Center, Denton City County Day School, and New Generation Child Care Center.

We participate in the North Texas Early Childhood Coalition. Quality Care and Early Education opportunities within our county have been their focus. Their mission is “To engage and empower parents, families, professionals, and communities to provide enriched environments for all children birth – 8 years through: Advocacy; Resources; and Comprehensive Services.” This coalition helps community members to come together to plan, to coordinate services, to share in collaborative professional development opportunities, and to share resources.

Students that attend our Early Childhood campus will transition to an Elementary campus to attend Kindergarten. Our district has 18 campuses out of the 24 Elementary schools that are Title I schools that our students may feed into. We have intentional transition activities planned each year to help our students & families to transition successfully. We plan to ensure that the individual student’s needs will be met at the new placement. *Data shows that 5,236 Kindergarten students in Denton County did not attend a Pre-K program. This calculates to 62%. The district is working to expand Pre-K options to our families. Data also shows that students that are Economically Disadvantaged and/or LEP tend to struggle to meet reading level by third grade. Our DISD zone is increasing focus and effort into enhancing literacy for this reason.

As Languages spoken in the community continue to increase, our bilingual department has noticed a trend over the past three years that shows our ESL population growing larger than our bilingual population. For the 2017-18 school

year, Ann Windle had students with 12 different languages spoken. For the 2018-19 school year, we have 8 different languages represented. 40% of our students at Windle are Limited English Proficient (LEP). *In order to plan our classes according to our student population needs, it is recommended that we watch these percentages closely each year in order to align our instruction. Our teachers are certified in ESL, and we currently have 6 Bilingual class options. According to the United Way data from 2015, the predominant language spoken in the community is English (77.7%). Spanish is 13.8% and Other is 8.5%.

SECTION 3: *Disabilities-*

Information was obtained from the Denton ISD Special Education software program to determine the number of children served with a disability within the district's attendance area on elementary campuses. Results of the analysis indicated of the district's total special education population of preschool aged children (3- or 4-years of age on 11/12/2018) to be 212. Services are provided on six campuses. Two of the campuses are district early childhood centers, one being Ann Windle School for Young Children where the district Head Start Program is housed, and the remaining four being the other Early Childhood center and the elementary campuses where a prekindergarten program is housed. An analysis was also conducted to determine the disabilities served in this population and the percentage of the preschool population this comprised. This analysis is presented in the table below.

Primary Disability	Total	Percent
Auditory Impairment	7	0.033018868
Autism	24	0.113207547
Emotional Disturbance	0	0
Non-Categorical Early Childhood	22	0.103773585
Other Health Impaired	10	0.047169811
Orthopedic Impairment	2	0.009433962
Speech Impairment	154	0.726415094
Traumatic Brain Injury	0	0
Visually Impaired	3	0.014150943

Within the community there are multiple home health agencies that provide services to children. At present time, an internet search revealed 10 agencies within the Denton ISD attendance area. These services include speech therapy, occupational therapy, and physical therapy. Criteria for these services differs from the guidelines used in the public school. MHMR of Denton County also provides services. Both the University of North Texas and Texas Woman's University have programs at low cost that are available to the public. Additionally, five known agencies that are not within the Denton ISD attendance area are known to provide services in the home or clinic setting to clients in the Denton ISD attendance area.

Mental Health-

In its 2017 Community Assessment Report, United Way of Denton reported "an estimated 19.8% of Denton County residents will experience mental illness in a year. The report further stated that diagnosed mental illness in children is on the rise in Denton County from 6.4% to 7.7% in 2015. Within Denton County, 40,571 students were identified to be at risk of dropping out of school.

The Center for Community Health reported in 2010 that 7 to 12% of children in Denton County have mental health problems that include behavior problems, learning difficulties, and developmental delays. Denton County Child Health Summit reported 60% of surveyed parents reported having difficulty in obtaining mental health care for their child.

Children ages 4 to 14 with a mental health need were 3.2 times more likely to be bullied as compared to children without mental health issues. Children with a mental health diagnosis were also 8 times as likely to bully other children.

Denton County Child Health Summit III (2016) reported that children with mental health needs were less likely to access all needed medical care and did not receive needed mental health care. Within Denton County, MHMR and Cook Children's Psychology clinic are identified providers. Numerous licensed professional counselors provide services, but only one reported working with young children beginning at age four. The WATCH Denton website provides information for "Kids and Teens", "Parents and Caregivers", and "Professionals". A review of this website indicated Resources and Information to be articles related to specific topics.

Both local universities offer counseling clinics on a sliding scale. Counseling services are provided by student clinicians under the supervision of a licensed professional counselor and/or faculty members. These services do not include counseling for young children. Services are provided on a sliding scale and are based on the availability of students to provide services.

Both universities offer play therapy as a service for upper aged young children, but not for younger children. Familial therapy is included in the services to assist

parents in learning how to work with their child. Services are provided on a sliding scale and are based on the availability of students to provide services.

*UNT Play therapists partner with Ann Windle to service our students in need of this service.

SECTION 4: *Health & Nutrition*

The most important children's health services according to parents in the region are preventive care, both medical and dental, immunizations, and care for short-term illnesses. Community leaders in the region see the top issues as safety from abuse, mental and dental treatment, nutritional needs and obesity prevention.

ABUSE

76% report that children living with someone with addiction is a serious problem in their county and 65% report that children living with someone with a mental illness is a serious problem.

Community leaders believe that safety from child abuse and mental health services are the most important issues in the region. 57% of regional community leaders felt that for children living in their counties, witnessing or being a victim of neighborhood violence is a serious problem. 59% felt that witnessing or hearing intimate partner violence is a serious problem. 56% felt that a caregiver being in jail was a problem.

Incidence of child abuse and neglect

The percentage of children reported by parents as being related to Child Protective Services or law enforcement investigations in Denton County have increased from 4% to 5% in 2018.

According to the Texas Department of Family and Protective Services, the number of CPS intakes assigned for investigation has risen since 2012. However, the cases of confirmed abuse have decreased, resulting in fewer children being removed from the home. The leading type of alleged abuse is neglectful supervision, followed by physical abuse. The percentage of children reported by parents to have been sexually abused in Denton is 1%, and the percentage reported by parents to have been psychologically abused is 2%.

Reports of spousal abuse

1 in 3 women in Texas will experience domestic violence during their lifetime. In Denton County, females are almost three times more likely than males to be

victims of family violence, with the greatest number of victims between 20 and 24 years of age.

The most frequently requested and unmet need for victims of sexual violence is housing. In 2016, after seeking emergency shelter, residing with family members was the main exit destination of clients. More than 80% of women and children experiencing homelessness have been victims of domestic abuse.

4% of children in the region have been taken to a family violence shelter, and 1% have lived in a shelter or with other friends/family because of domestic violence.

PREGNANCY & BIRTH

In 2010, 54% of all pregnancies in Texas were unintended.

Infant Mortality

The infant mortality rate in Denton County is 4.6 deaths per 1,000 live births. Within Denton County, the infant mortality rate for babies born to Black, non-Hispanic mothers is about 1.7 times higher than for White, non-Hispanic mothers.

Number of low-birth weight babies

While the overall percent of low birth weight babies in Denton County is only 7%, when low birth weight is examined by race, the percent of low birth weight babies born to women who identify as Black or African American is 12%.

Teen pregnancy rates

Denton County also has a higher rate of teen births.

In 2011 Texas was ranked as having the 5th highest teen birth rate in the United States, with Denton County having a higher rate than average for the state.

Women under the age of 17 experience a 22% higher preterm birth rate than the overall county population.

Women receiving prenatal healthcare

1 in 3 births in Denton County were to women who received inadequate prenatal care. Women under the age of 19 and women who identify as Hispanic are less likely to have adequate prenatal care. Further, more than a third of mothers reported delaying prenatal services due to lack of financial means or insurance coverage.

Available Services

Prenatal services are available to women that meet eligibility criteria for low or no-cost services at providers including, but not limited to Denton County Public Health, Family Health Care of Denton, Health Services of North Texas, Planned Parenthood, and Woman to Woman Pregnancy Resource Center Statewide programs (such as Healthy Texas Women). These offer women's health and family planning at no cost to eligible women in Texas.

GENERAL PHYSICAL HEALTH IN THE COUNTY

The Robert Wood Johnson Foundation, in collaboration with the University of Wisconsin, has ranked Denton County as the third healthiest county in Texas. While Denton County compares favorably to other Texas counties, challenges like access to care, preventative initiatives, and mental health continue to affect the health of residents.

Diabetes

While there is no direct data for how many individuals in Denton County are living with diabetes, it is estimated that over 700,000 people in North Texas have diabetes. Texas Health Presbyterian Hospital Denton estimates that approximately 30% of their admitted patients have diabetes. The Centers for Disease Control projects that by 2050, 1 in 3 adults could have diabetes.

Tuberculosis

Denton County's TB rate is above the HP2020 Target of 1.0 cases/100,000 population.

HIV

For 2015, Denton County's rate of new HIV diagnoses was 6.3 per 100,000. In Denton County, Black, non-Hispanic residents are living with HIV at a 33% higher rate than Hispanic residents.

Causes of Death

In 2013 cancer was the leading cause of death in Denton County, with lung cancer as the most common cause of cancer deaths. Breast cancer was the leading cause of new cancer cases in females and is on the rise, while prostate cancer was the leading cause of new cancer cases in males. Heart disease is the second leading cause of death in Denton County. Heart disease and stroke cause 1 in 3 deaths in women each year, more than all cancers combined

Motor Vehicle Accidents

In Denton County, 37 deaths due to motor vehicle collisions occurred in 2014. Between 2010 and 2014, 31.8% of all motor vehicle crash deaths in Denton County had alcohol involvement, in line with the state percentage of 31.9%. In 2016, 16 alcohol involved fatalities occurred in Denton County. There was a total of 439 speed-involved crashes in Denton County in 2016, resulting in 12 fatalities and 40 incapacitating injuries. In 2016, there were also 2,240 distracted driver crashes.

Suicide

Denton County is estimated to have 10 deaths by suicide per every 100,000 individuals. Denton County has one of the lowest prevalence rates of death by suicide in the state.

Incidence of drug and alcohol abuse

Alcohol-related disorders are one of Denton County MHMR's top 9 primary diagnoses. An item of concern that arose among community focus group participants was the effects of alcoholism and drug use on community physical safety and crime.

For 2014, 14% of Denton County residents reported currently smoking every day or most days and have smoked at least 100 cigarettes in their lifetime.

Preventative Care

In a survey conducted by Texas Health Denton, 21% of local respondents identified clinical prevention services as a community need.

Access to Care

Over 70% of respondents to a survey in Denton County reported that they or someone they know have delayed seeking healthcare due to cost during the prior 12 months.

Denton County had the 9th highest enrollment in the state in Affordable Care Act Market Place health insurance plans.

Although the Affordable Care Act calls for Medicaid expansion in every state for legal residents with incomes up to 133% of the poverty level, Texas has elected to not expand Medicaid. As such, Texas now has the largest coverage gap in the nation. More than 684,000 Texans are ineligible for Medicaid and are also ineligible for premium subsidies through the state marketplace.

More than 17% of adults and 10% of children in Denton County lack health insurance, with the primary reason being that it is too expensive.

Most recent reporting (2008) states there were over 42,000 unduplicated Medicaid clients in Denton County. There are an estimated 320 service providers that accept Medicaid.

For adults in Denton County, individuals of race or ethnicity classified as "Other" have the highest percentage of being uninsured and individuals who identify as Hispanic or Latino have the second highest percentage of being uninsured.

Denton County has steadily increased the number of insured adults to 82.9% in 2014. However, this leaves nearly 90,000 adults under the age of 65 uninsured in Denton County.

Community Assets

Primary care may be available through the Denton County Health Department, Health Services of North Texas, Christian Community Action's Adult Health Center, and Denton Community Health Clinic. Project Access (administered by

the Denton County Medical Society) remains the sole resource facilitating specialty care for persons without resources in Denton County. Community resources available for preventative and/or primary care at low to no-cost for eligible individuals are available at agencies including, but not limited to: Denton Community Health Clinic, Denton County Public Health, First Refuge Ministries, and Health Services of North Texas. Texas Health Resources Community Connect identified 386 free or reduced cost programs near Denton, Texas that provide medical care. The Denton Community Health Clinic, Planned Parenthood, Caring for Women, Health Services of North Texas, and Health Texas Women offer free and/or affordable health care services for teen and adult women. Services provided include cancer screenings, breast exams, family planning, and well-woman care.

CHILDHOOD PHYSICAL HEALTH

89% of parents in Denton would generally describe their child's health as excellent or very good. 13% of children in Denton have specialized healthcare needs. Regionally, 12% of children aged 5-14 missed a week or more of school last year. Another 20% missed 4-6 days. Over 64% of parents report that they are not familiar with the types of preventative care programs in Denton County.

Injury Prevention

11% of children in Denton County had an accidental injury that needed medical attention during the past 12 months. Of those children, 25% were in the 2-5 years old range. Parents in the region report they are only somewhat familiar with the types of injury prevention services available in their community. Accidental deaths among children under the age of 15 are rare. However, motor vehicle accidents continue to be a leading cause of death among individuals ages 15-24.

Asthma

18% of children in our region have been diagnosed with asthma by a healthcare professional at some point in their lifetime. Of those children, 68% currently have asthma. African American children are about twice as likely to currently have asthma than other children. 15% of children with current asthma are ages 3 to 5. Boys are more likely than girls to have current asthma. Of children in the region with current asthma, 31% are having symptoms and/or using their inhaler more than twice per week, 35% are refilling their inhaler more than twice per year, and 15% have been in the emergency room because of asthma within the past year. Our region far exceeds the state and national averages for asthma. A possible reason is that Denton County particulate matter density exceeds that of the

state and nation. In 2012, the level was 11 in Denton County, as compared to 7 in Texas, and 8 nationwide.

*Currently, 13 of the 193 students in the Head Start program at Ann Windle have been reported by their parents to have asthma.

Immunizations

Denton County has the highest percent of students with conscientious immunization objections in the DFW Metroplex, ranking 10th highest in the state of Texas. For the 2016 – 2017 academic year, Denton County school districts' conscientious exemptions ranged from 0.0% to 14.87%.

Twelve percent of Denton County residents identify immunizations and infectious disease as one of the greatest community health needs.

Vaccinations are available through the Texas Vaccines for Children Program.

Peak volume for the Denton County Public Health Department in providing vaccinations occurs the week prior to school beginning.

*Only 1 of 193 students in our Head Start program has claimed an exemption for vaccinations.

Access to Care

33% of parents say that they are not familiar with the types of health care services that are available in the community.

Healthcare access and the cost of healthcare was mentioned throughout surveys by parents and community leaders as top concerns in the county.

More than 20% of uninsured children nationwide reside in Texas. While 90.9% of children in Denton County were identified as having medical insurance in 2014, the deficit 9.1% leaves nearly 18,700 children uninsured in Denton County.

Children who identify as Hispanic or Latino have the highest rates of being uninsured, which experts explain as partially being due to the public charge rule, which has made immigrants concerned regarding their immigration being threatened by using public benefits. Our own program has seen undocumented immigrants concerned about benefits applications for their children bringing attention to themselves and leading to deportation.

98% of parents in Denton County reported their child having a primary physician. 93% of children in Denton County have healthcare coverage, with 63% being from an employer and 22% having Medicaid.

8% of children in Denton County have gone without healthcare coverage at some time during the previous 12 months.

3% of children in Denton County did not receive all needed medical care, primarily because the parents could not afford it and/or it was not covered by insurance. 4% of children in the region did not receive all medication that was prescribed.

Multiple county agencies have reported transportation to medical services a need in Denton County. Even when public transportation is available, there have been reports of not stopping to allow those with disabilities on the bus, not allowing service animals, and refusing transportation to those in the middle of a mental health episode.

In 2015, almost 14% of Denton County households primarily spoke Spanish at home, and the population identifying as Hispanic or Latino in Denton County has been increasing. Nearly 40% of Denton County residents relay: "I, or someone I know, have had difficulty understanding a health professional because of a language barrier in the last 12 months." This indicates a strong need for Spanish speaking providers.

Within Denton County, there are 63 primary care providers per 100,000 people as of 2013. Denton County had 49 non-primary care providers per 100,000 people as of 2015. Denton County had 52 dentists per 100,000 people as of 2015, with this number slowly increasing over the past two years.

*Currently, all Head Start parents at Ann Windle report that their child has medical and dental homes. However, based on physical and dental exam inquiries, it appears that 13 of 193 students do not actually have a medical home and 17 of 193 students do not have a dental home. It is recommended that the program build a list of resources who may be used as a medical or dental home and work with parents to ensure students have true medical and dental homes.

14 of 193 students lack health insurance. Staff has noted that for children who qualify for Medicaid but have not applied at the beginning of the school year, there is a delay in necessary services for children as they wait for Medicaid applications to be approved.

Our program is fortunate to have an area pediatrician willing to do physical examinations on our students without a medical home at no cost to the parents. We also have a partnership with the TWU Dental Hygiene Program which offers free screenings by a dentist and a free cleaning by dental hygiene students to our students without a dental home. Unfortunately, few of our parents take advantage of the programs.

Community Assets

The following provider resources have been identified:

Pediatricians: Pediatricians from Cook Children's accept Medicaid and have Spanish speaking providers, and there are 8 other pediatricians in Denton accepting new patients who accept Medicaid, STAR or CHIP, 4 of whom are Spanish speaking.

Other Resources: The Denton County Health Department offers free vaccines to children ages 0-18 who are uninsured, enrolled in CHIP or Children's Medicaid, underinsured, or an Alaskan Native or American Indian. Reduced cost vaccinations are offered at First Refuge Ministries Pediatric Clinic, Denton Community Health Clinic, and Health Service of North Texas Denton Medical Center.

Vision: There are multiple eye doctors who accept Medicaid and speak Spanish. There are 3 providers who accept VSP Global Eyes of Hope certificates. Kiwanis will assist with children who need vision exams, but they do not have anyone available to translate for Spanish speaking families.

MENTAL HEALTH

Multiple surveys completed in Denton County have reported care for mental health issues as an important community need.

Estimates now indicate that approximately 131,767 residents of Denton County experience any mental illness annually.

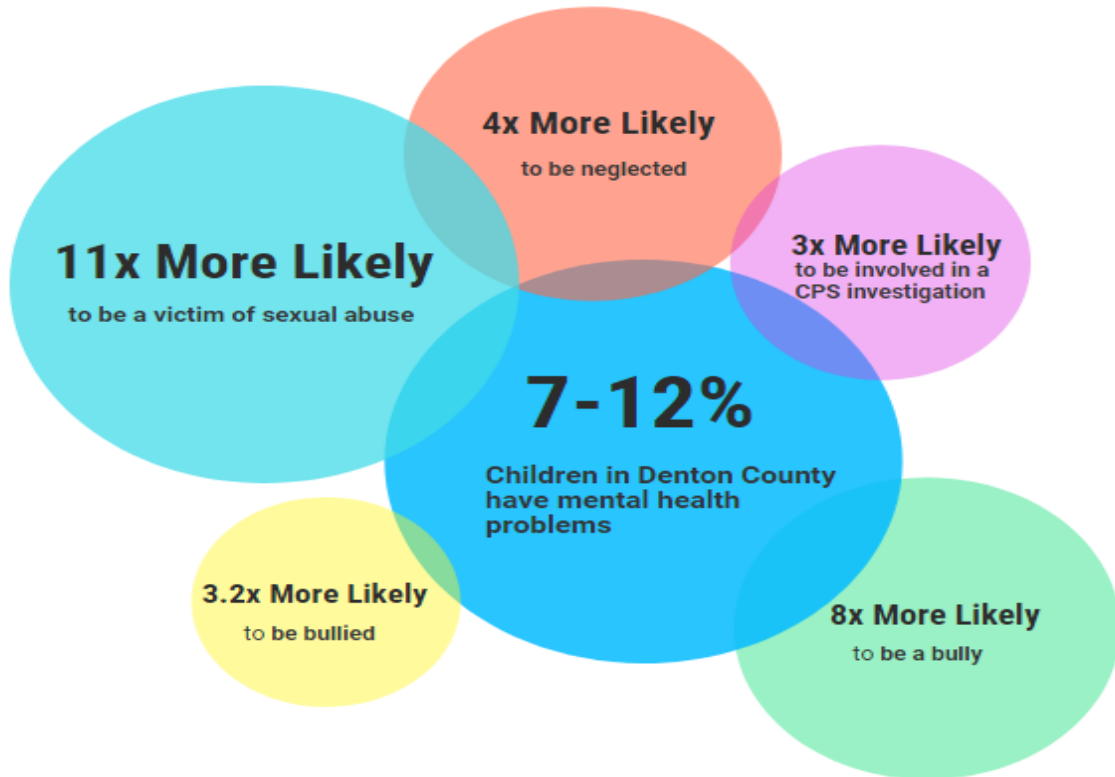
Based on the Census Bureau population data for Denton County, it is estimated that 46,118 individuals meet the criteria for any diagnosable mental illness and live below 200% of the FPL in Denton County. Of those experiencing homelessness in Denton County, 56.3% report exhibiting a diagnosable mental illness.

The top mental health diagnoses in Denton County are major depression and bipolar disorder. In Denton County, 18.5% of all Medicare and Medicaid beneficiaries have a diagnosis of depression.

Diagnosed mental illness in children is on the rise in Denton County with estimates ranging between 7% and 12% of children in Denton County having mental health problems. The top illnesses/disorders reported are ADD/ADHD and anxiety problems. Regionally, 13% of children have had sleep problems, 12% have had self-esteem problems, 8% have had problems with eating, 6% have frequently wet the bed after age 5, and 5% have had negative, obsessive thoughts.

Children in Denton County with mental health issues are almost 3 times more likely to be involved in a CPS investigation, 4 times more likely to be neglected, 11 times more likely to be a victim of sexual abuse and almost twice as likely to be a victim of psychological abuse. Suicide among children & adolescents is a growing concern of the Denton County Health Department. 70% of children engaged with Denton County Juvenile Justice have a mental health diagnosis.

12% of children in Denton County have been bullied and 3% have bullied. Denton County children age 4 to 14 with a mental health need were 3.2 times as likely to be bullied and 8 times as likely to bully.



Adverse Childhood Events

A significant increase has been indicated in experiencing trauma from 4.5% in 2012 to 7.1% in 2015 for Denton County children, coupled with an increase in self-esteem issues from 9.3% to children 13.6%. 27% of homeless children in the region have experienced trauma.

* Our Head Start program at Ann Windle has a school psychologist on-site through the special education department and has a half-time school counselor. Program staff at the school have frequently noted that large numbers of our students have experienced trauma and can use guidance in coping. Because our area is lacking in mental health resources, our program is attempting to fill that gap as best it can. Our director is currently advocating that the district increase our time with a school counselor on-site to a full-time counselor from the current half-time counselor.

Access to Mental Health Services

Sixty-four percent of parents reported difficulty accessing mental health services for their child. Denton County children with mental health needs were reportedly less likely to access all needed medical care and did not receive needed mental health care.

In Denton County, there is only one mental health provider to every 1,100 individuals. Wait times to see a child and adolescent psychiatrist average 7.5 weeks.

In Denton County, children ages 4 to 14 with mental health issues are more likely to have ER visits, more likely to spend time in the hospital and more than 10% of those children did not get needed mental health care.

Data indicates children in Denton County with mental health needs are less likely to access all needed medical care.

There is a definite need for more mental health resources for our children.

ORAL HEALTH

The need for dental care, especially among uninsured adults, was identified in community surveys and community focus groups.

98% of children in the region have their own toothbrushes, and 93% brushed their teeth yesterday. 86% of children in Denton County have had a dental exam during the past 12 months, compared to only 81% statewide and nationwide. 34% of children in Denton County have had dental problems with 3% of children having missed school because of dental pain, some missing 21 or more days. The top reasons children in the region did not receive needed dental care was that the parents could not afford the care or that the child was not old enough.

Community Assets

The following provider resources have been identified:

There are 16 dentists accepting new patients in Denton who accept Medicaid, 14 of whom speak Spanish.

Other Resources: The Kiwanis Club of Denton offers low-cost or no cost dental services to children in Denton County. The Denton County Public Health Department offers dental check-ups and preventative services, including x-rays and extractions, for a \$15 flat rate if they fall below 150% of the poverty line. However, eligible clients will not be refused services due to inability to pay. The department does not offer fillings, cleanings, or deep fillings. The First Refuge Ministries Dental Clinic offers full dental services to adults 18 and older who fall below 200% of the poverty line and live north of Lake Lewisville for a \$10 appointment fee. They currently do not offer services to children. TWU Dental Hygiene Program provides low-cost cleanings to residents and has begun

offering free cleanings to Head Start participants through a partnership with our program.

WEIGHT

In a survey conducted by Texas Health Denton, 56% of respondents stated that obesity/overweight was a community health need – ranking this as the most frequently reported need. 7% of Denton parents of children under the age of 14 are concerned their child is overweight and 7% are concerned their child is underweight.

Denton County has a higher rate of adult obesity and physical inactivity than peer counties. An estimated 22% of adults in Denton County had a BMI of 30 or higher in 2015. According to the CDC, Denton County performs worse in adult obesity prevalence and adult physical activity when compared to peer counties.

27% of Denton County children ages 2-14 are overweight or obese, 13.5% being obese, indicating a need for more physical activity, nutrition education and access to healthy foods.

* At Ann Windle, the number of overweight and obese children has slightly decreased since last year. Unfortunately, there has also been a significant increase in the number of underweight children. Ann Windle currently has a program to assist with weekend food needs for children in need.

LIFESTYLE & PHYSICAL ACTIVITY

In 2015, 95% of parents felt their child was safe in their neighborhood, 90% felt they were safe in their school, and 98% felt they were safe at home. 96% of parents in Denton feel that their children have safe parks and/or outdoor areas to play in where they live.

Residents of Denton County are more likely to live near highways than residents of peer counties.

Physical Activity

During the key informant interviews and focus groups, residents relayed a need for more recreation and fitness opportunities in Denton County.

While some data indicates poor recreation and fitness facility access for Denton County, data also shows that 96% of the Denton County population resides “reasonably close” to a location for physical activity.

Less than half of the Denton County population met the 150 minutes of aerobic physical activity per week recommendation in 2013. 20.2% of Denton County residents are physically inactive, having not participated in physical activities outside of work in the past month. Females in Denton County report higher rates of physical inactivity than males.

The CDC recommends that children should have at least 60 minutes of moderate to vigorous physical activity daily, but only 30% of children ages 5-14 in the region had at least 30 minutes of daily physical activity.

Community Assets

The City of Denton has 32 parks with walking/hiking trails, 27 playgrounds, more than 75 athletic fields, 2 public pools, and a water park in for residents to get out and get active in.

NUTRITION

Diet, food and nutrition was the third most prevalent social determinant of health in the Texas Health Denton community survey. Residents of Denton County report more limited access to healthy food than peer counties.

16% of Denton County residents experience food insecurity. It is estimated that 174 children in Denton County go to bed hungry 10 days out of every month. 4% of children in the region, and 18% of children in households with incomes under \$35,000 did not eat enough during the past 12 months because the parent could not afford to buy it.

In the region, 42% of parents report talking to their children daily about healthy eating habits, 8% report talking to their children seldom or never about healthy eating habits.

Denton County performs slightly worse than the state in percent of adults consuming fruits and vegetables. The percentage of Denton County adults who report eating, on average, fewer than 5 servings of fruits and vegetables per day is declining. The National Health and Nutrition Examination indicates that those with a family income of 199% of the poverty threshold and below have the highest mean percent of daily calorie intake from added sugars.

In the region, 11% of children ate no vegetables yesterday and 10% of children ate no fruit yesterday. 27% ate 3 or more servings of vegetables, and 34% ate 3 or more servings of fruit.

26% of children had 1 or 2 servings of soda yesterday, and 3% had 3 or more servings. 8% had 3 or more servings of juice.

11% of Denton County children did not have a vegetable yesterday, 11% did not have any fruit yesterday, and almost 4% had neither yesterday.

Denton County has a reported grocery store density of 0.08 per 1,000 residents and farmers' market density of 0.01 per 1,000

residents. Access to fast-food has steadily increased in Denton County since 2007, with a density of 0.65 per 1,000 residents in 2012.

In 2015, 5.66% of the Denton County population accessed SNAP benefits. Seven zip codes in Denton County, have almost 49% of residents eligible for SNAP, however only 43% actually participate.

*Currently, Ann Windle has 63.7% of the student population that are directly certified to receive free meals through SNAP as compared to 67.8% for the 2017-2018 school year. District wide, 18% of the student population is directly certified for free meals due to SNAP.

For the 2018-2019 school year, the Texas Department of Agriculture issued a waiver which allows districts to provide free meals to all preschool aged children enrolled with a school district. This enabled the other 36.2% of the students at Ann Windle to receive free meals. The District picked up an additional 525 students attending 6 different schools for meal assistance.

Due to food insecurity, the District has partnered with various organizations to provide "back pack programs" to local schools with a high number of at-risk students. The program provides shelf stable food to cover 7 meals for the student for the weekend. These meals are provided throughout the school year.

During the summer months, the school district along with the city of Denton provide lunch meals at various locations. The meals are provided at no cost to the students. The average daily meal count is 2000 meals at the peak of the summer months.

Ann Windle has the Food4Kids Backpack Club where food is sent home with students for the weekend in their backpack. Data from the 2017-18 school year shows that 10 orders of food were placed between November 2017-May 2018. For the 2018-19 school year, 6 orders have been placed from September 2018-Dec. 2018. During those 4 months, 114 bags were ordered which served 53 children and 74 siblings.

Supplemental Nutrition Assistance Program (SNAP; formerly food stamps) cases and recipients also increased for the same month over six consecutive years, with significant increases between 2013 and 2014. This indicates an increase in individuals that have a qualifying income to be participants of the program. The U.S. Census Bureau estimates that between 2011 and 2013, the proportion of the population in Denton County receiving Food Stamps/SNAP benefits within the past 12 months was as high as 6.2%.

As of 2015, out of 22,733 individuals in Denton County who were eligible for WIC benefits, 46.7% received them.

Community Assets

Texas Healthy Presbyterian Hospital Denton provides a community resource through the Diabetes and Nutrition Center, offering dieticians to promote self-management practices and nutrition information to individuals with diabetes. Meals on Wheels and SPAN Inc. address senior nutrition by providing meals to seniors and persons with disabilities.

The Denton Hunger Coalition operates under the mission to coordinate hunger relief efforts in Denton County and the surrounding area by facilitating programs that address the issue of hunger. The Hunger Coalition in partnership with the Tarrant Area Food Bank oversees the Denton Mobile Pantry.

Texas Woman's University also offers a Mobile Food Pantry in Denton, open to students, faculty, staff and community members in partnership with the North Texas Food Bank.

Additional resources within the community include, but are not limited to: Christian Community Action, Denton Community Food Center, First Refuge Ministries, Our Daily Bread, and even a lawyer's office with a food pantry in the parking lot. Programs such as SNAP and WIC provide additional nutrition support to eligible participants.

RECOMMENDATIONS

Parents are understandably focused on their immediate needs, feeding and clothing their child, and finding care for their children when their children are ill. By assisting parents in meeting those needs, we can gain their trust and buy-in for assisting them with preventative needs such as improving nutrition and obesity prevention.

Recommendations for our program:

- Keep an updated list of providers that can assist in various medical situations, so that parents can be assisted without delay when needing care for their child.
- Continue weekend food program and ensure that families with identified food needs are aware and able to utilize community food resources during breaks from school.
- Continue to arrange to have assistance for parents of potential students to apply for Medicaid prior to registration.
- Expand upon current nutrition and lifestyle parent education programs and offer education outside the classroom, such as through social media.
- Speak with parents whose children do not have a medical and/or dental home and who have not taken advantage of opportunities for free examinations to determine barriers to taking advantage of these programs.

- Educate parents on the benefits of Medicaid they may not be aware of, such as transportation.
- Identify ways non-mental health staff can assist with mental health needs of students, such as staff education on identifying and handling trauma.
- Keep an updated list of providers for parents of our students that can assist in various medical situations, as healthy parents have more time and energy to care for their children.

SOURCES

Amerigroup Provider Search, Amerigroup, accessed November 13, 2018 at www.amerigroup.prismisp.com.

The Center for Children's Health, *Children's Asthma Data in North Texas*, accessed November 3, 2018 at <https://www.centerforchildrenshealth.org/en-us/HealthIssues/asthma/Pages/Asthma.aspx>.

The Center for Children's Health, Denton County Child Health Summit, 2013.

The Center for Children's Health, Regional Child Health Summit IV, 2018.

Community-Wide Children's Health Assessment and Planning Survey 2015, accessed December 3, 2018 at <http://www.cchaps.org>.

Denton County Public Health, Texas Health Presbyterian Hospital Denton, & United Way of Denton County, Inc., *Community Health Assessment: Collaboratively Leading Our Community to a Healthier Future*, 2017.

United Way of Denton County, Inc., *2017 Community Needs Assessment*, 2017.

Wellness Alliance for Total Children's Health of Denton County, Denton County Child Health Summit III, 2016.

MCNA's Online Provider Directory, MCNA Dental, accessed November 13, 2018 at www.mcna.net.

Phil Galewitz, *Number of U.S. Kids Who Don't Have Health Insurance Is On The Rise*, NPR.org, November 29, 2018.

Robert Wood Johnson Foundation, *Denton, Texas, 2018, County Health Rankings & Roadmaps: Building a Culture of Health, County by County*, accessed December 3, 2018 at www.countyhealthrankings.org.

Section 5: Social Services

Service Area Data (Demographics)

Denton County is experiencing a population explosion and is one of the fastest growing counties. By 2050, it is projected to have over 3,031,597 people in Denton County.

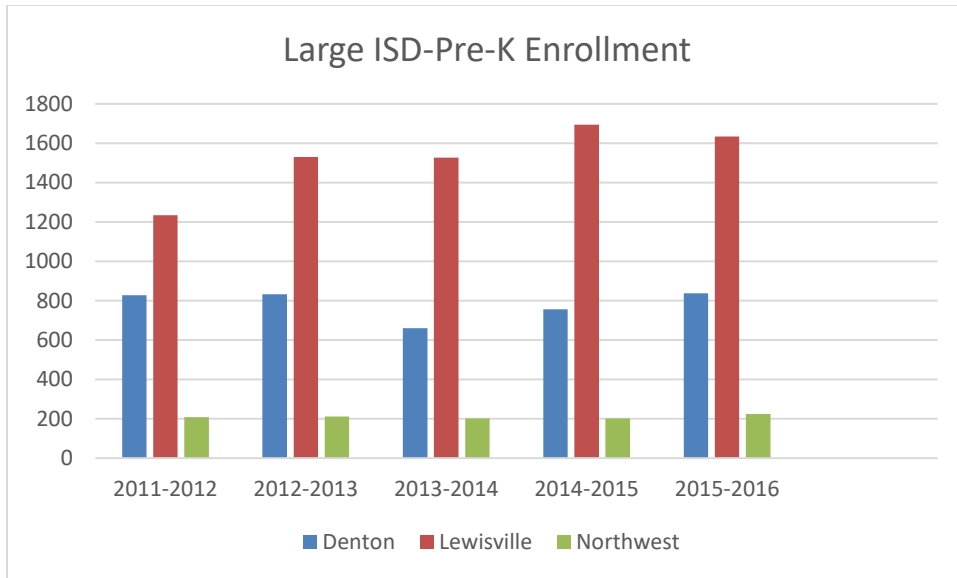
City of Denton Population, Other Information

Year	Population	Source
2017	141,923 (Estimate)	Texas State Data Center
2010	113,383	US Census
2000	80,537	US Census
1990	66,270	US Census
1980	48,063	US Census

Source: YearPopulationSource2017141,923 (Estimate)Texas State Data Center2010113,383US Census200080,537US Census199066,270US Census198048,063US Census

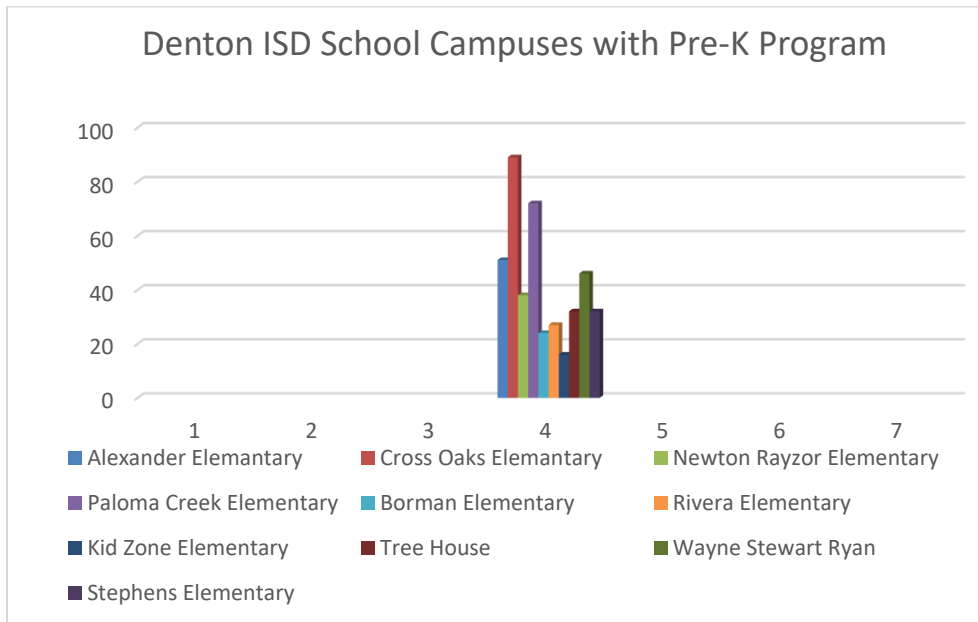
According to the 2016 US Census 6,788 children under the age of five live in poverty in the City of Denton. Of the 6,788 children 1,318 live below the poverty level. 6.2% are male and 5.2 are females.

There are currently an estimated 645 children eligible for Head Start within the Denton Independent School District. There is a pocket of children living in poverty in the UNT area. Trends shows that participation in pre-k program is on the increase in the large school districts.



	Denton	Lewisville	Northwest
2011-2012	828	1,235	209
2012-2013	833	1,530	211
2013-2014	660	1,527	202
2014-2015	757	1,695	201
2015-2016	838	1,634	225

Source: Denton United Way Community Assessment 2017



Service Area Data (Social Services)

(Domestic Violence)

The Denton United Way reports 1 in 3 women in Texas will experience domestic violence. 158 women will be killed by a male intimate partner. In Denton county 28% will more likely to be victims of family violence. During the 2017-2018 Head Start program year 11 families expressed concerns and 3 families received services. *The most frequently requested unmet service for survivors is housing.*

Some key statistics include:

- 132 women were killed in 59 counties
- The youngest victim was 16 and the oldest victim was 90
- 77% of the women were killed at home
- 67%- The leading cause of death is firearms
- 14% were stabbed
- 7% were strangled
- Leaving Does Not Equal Safety- 43 women had ended the relationship 15 married women were separated from their husbands, 8 women were in the process of leaving

Source: tcfv.org

(Homeless)

It is estimated that Denton ISD currently has 720 students enrolled under the McKinney -Vento Act. According to the PIR, Denton ISD Head Start program served (11) homeless families and (11) homeless children. There were (5) families that acquired housing in the 2017-18 program year. It is reported that families with female head of house hold with children under 18 years of age has the highest poverty rates in Denton County. The leading cause of homelessness in 2017 was job insecurity due to the lack of adequate transportation. Below is a chart to show the increase of students experiencing homelessness in Denton County.

2014-2015	2096 students
2013-2014	1700 students
2012-2015	1079 students

The top most mentioned cause was:

- Housing affordability
- Lack of funding for services providers in housing
- Concern that student housing is driving all housing cost up
- Veterans at risk of becoming homeless

Source: Denton United Way Community Assessment 2017
(Foster Care)

Over 70% of children in some type of foster care in Denton County are placed outside of the county due to a lack of placement within the county. The number of children removed from their homes due to abuse or neglect continues to increase, rising by more than 40,000 nationwide from 2012-2016.

CASA of Denton County
Children Served

	FY 2016	FY 2017
Cases Worked	349	369
Children Served	583	604
DISD Head Start		9

According to the CASA annual report, the number of children (ages 0-5) in foster care was 306, which represents a slight increase from 2016 to 2017. In Denton ISD Head Start Program 9 students were in foster care at some time during the year and 6 enrolled during the year. Many of foster care children struggle with the trauma they experience as a result of abuse, neglect, separation and instability. Foster children are more likely to experience behavioral problems and/or drop out of school.

There was a noted decrease in the following:

- Confirmed cases of abuse/neglect
- 68% of the children achieved permanency within 18 months of CASA's entered acceptance of the case
- Less than 1% of children served by CASA entered the child welfare system for the second time

Source: annualreport2017casaforchildren.org
(TANF)

TANF cases and recipients of the benefit month of September 2018 and surrounding counties.

Counties	Cases	Recipients	Children	Adults	Payments	Average per Cases	Payment per Recipients
Denton	129	313	253	60	\$25,502	\$198	\$81
Cooke	24	63	50	12	\$4,613	\$191	\$71
Grayson	87	191	158	34	\$14,478	\$167	\$76
Dallas	1786	4346	3438	911	\$347,983	\$195	\$80
Collin	150	341	270	71	\$27,202	\$181	\$80
Tarrant	972	2380	1,892	489	\$187,984	\$193	\$73
Wise	20	41	32	9	\$3,646	\$181	\$88

Counties	Case	Recipient	Children	Adults	Payment	Average Payment per case	Payment per Recipient
Denton	5	23	16	7	\$1,762	\$348	\$75
Cooke	0	0	0	0	\$0	\$0	\$0
Grayson	5	16	9	7	\$1,070	\$211	\$66
Dallas	43	146	84	62	\$11,290	\$265	\$477
Collin	5	16	11	5	\$41,376	\$272	\$85
Tarrant	24	83	55	28	\$5,752	\$237	\$69
Wise	1	5	3	2	\$263	\$260	\$52

The **Temporary Assistance for Needy Families (TANF)** program is designed to help needy families achieve self-sufficiency. Along with other agencies listed below, the TANF system received a transformation on the state level in Texas. This transformation is a reorganization to produce a more efficient, effective, and a responsive system. This transformation will make the system easier to navigate for people who need information, benefits, or services. In FY 2017, there were a total of 1,095,368 in the United States receiving TANF. In the State of Texas, there were 28,476 families receiving TANF. In September 2018, there were 313 families receiving TANF. The Program Information report showed 1 family enrolled in Denton ISD Head Start that remained on TANF throughout the program year.

These changes affect the following agencies:

- Texas Department of Aging and Disability Services (DADS)
- Texas Department of Assistive and Rehabilitative Services (DARS)
- Texas Department of Family and Protective Services (DFPS)
- Texas Department of State Health Services (DSHS)
- Texas Health and Human Services Commission (HHSC)

Source: National TANF Data Files as of 8-24-2018

Data Source: DM_MED_TF_Edg_EOM

(SNAP)

In Denton County there are 17, 733 cases of the SNAP program in October 2018. Of these there are 7,134 recipients under the age of five. The United Way reported in the 2015 report that the SNAP recipients have doubled since 2006. A significant increase occurred during 2013-2014. In the PIR report there

were 88 families enrolled in the SNAP program and by the end of the school year, there were 104 students enrolled.

Key Finding:

There will be an 6.2% increase. This directly correlates with the increase of economically disadvantaged student population in Denton County.

2015 SNAP Participation versus Eligibility for Selected Denton County ZIP Codes*

ZIP Code	Children	Adults	Seniors	Total Eligible	NOT Receiving	%Eligible Actually Receiving	%SNAP Coverage
75068 Little Elm	2,156	1,976	296	4,428	1,797	59%	41%
76201 Denton	1,014	9,982	216	11,212	9,583	15%	45.3%
76205 Denton (south)	731	4,665	262	5,659	3,712	34%	43.6%
76208 Denton (east)	1,187	1,939	316	3,342	924	73%	43.2%
76209 Denton	2,473	3,513	417	6,404	3,396	47%	42.2%
76210 Denton (south)	1,485	3,370	472	5,328	3,473	35%	42.2%
76227 Aubrey	700	1,125	129	1,954	443	77%	41.5%
					Average:	48.75%	43.00%

Source: Feeding Texas (feedingtexas.org)

(Economically Disadvantage)

National trends indicate that in the United States 14,116,000 live in poverty. 23, 556,000 living in high housing cost. United Way reports Communities in school in North Texas that 1 in 4 students are at risk of dropping out. 30% of 3rd graders who are economically disadvantage are reading below proficient level, and are likely to become low wage earners, and least productive.

Total economically disadvantaged students in Region 11 (Denton) according to the TEA is 130,429. (see chart below)

	Eligible for Free Meals		Eligible for Reduced-Price Meals		Other Economically Disadvantaged		Not Economically Disadvantaged		Total Count
	Count	%	Count	%	Count	%	Count	%	
Region 10	0	0.00%	0	0.00%	36	3.28%	1,063	96.72%	1,099
Region 11	35,640	27.33%	7,182	5.51%	564	0.43%	87,043	66.74%	130,429

Source: <https://rptsvr1.tea.texas.gov/>

Recommendations

1. Work closely with community partners in order to collaborate and expand the scope of social services for families in poverty in the areas of;
 - Employment (Workforce)
 - Food
 - Health care
2. Increase the number of community partnerships (MOU).
3. Continue to address issues with single parent mothers.
4. Increase enrollment in GED and ESL Classes.

Section 6: Parent, Family Identified Needs & Community Resources

Upon enrollment, our families fill out a survey that helps us to measure what their current needs are. We then seek out resources that can enter into a MOU with us to help to serve our families.

Community Resources- Available to meet the identified needs

1. Service Area Data (PFCE)

PARENT, FAMILY, COMMUNITY, ENGAGEMENT

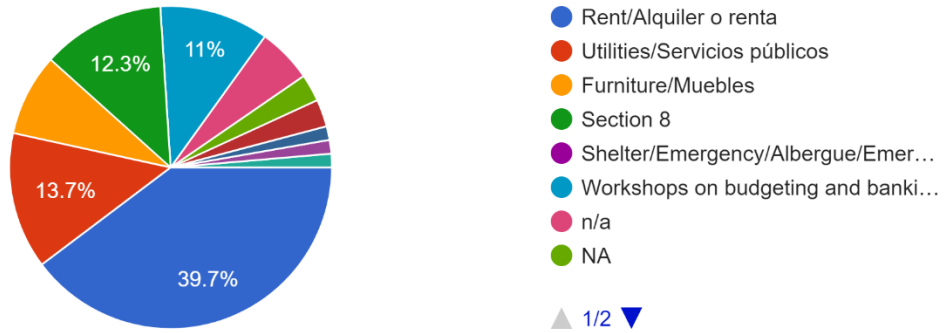
In our service area the majority of the social service providers are in Denton County. The United Way Denton County Community resources directory listed 192 agencies. The 2018 Community Needs Assessment produced by the Community Services Incorporated (CSI) reports that there was a total of 17 needs identified in Denton County. The following are the top five needs identified:

1. Housing & Rental Assistance
2. Transportation
3. Affordable medical care
4. Job training
5. Mental health services

During the recruitment, potential Head Start parents were asked to respond to the Family Interest Survey, a survey of their experiences and interest of classes that will be offered by the school. This survey indicated, just as the CSI survey, the top five needs of Denton County and our families. A total of 287 applicants for Head Start program voluntarily completed the survey, accounting for greater than half the student population. The services provided are through the Social Services and Parent Services component of Head Start. 73 family responded to the need of housing.

Housing Needs

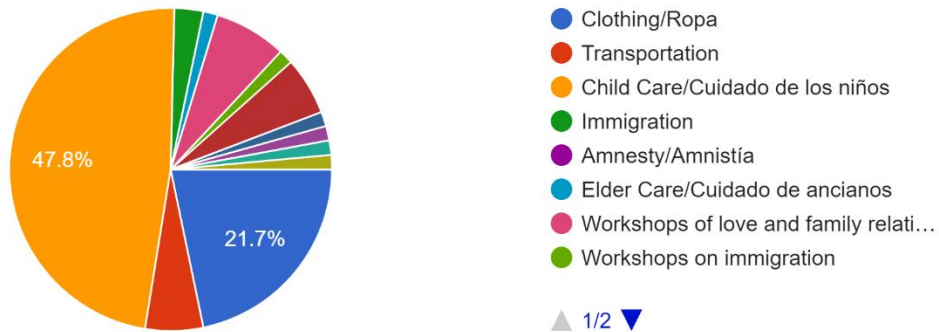
73 responses



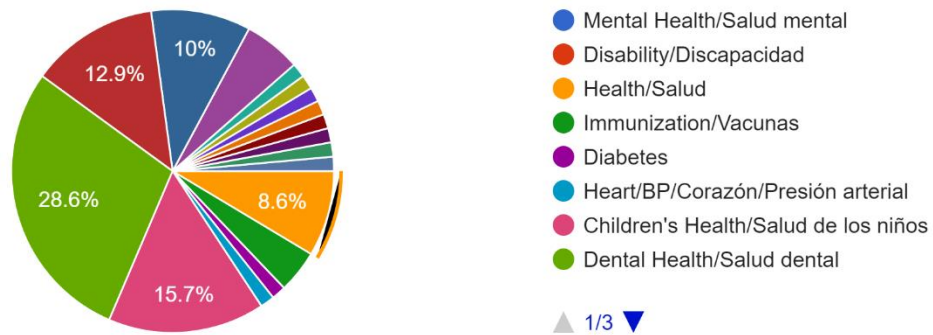
In addition to evaluating services provided, 5.8% of the Head Start applicants had concern with transportation. Denton County United Way community assessment shows that many people are not aware of the available transportation services. DCTA and Span are the services in Denton. This graph indicates that child care is a major concern. 47.8% of the applicants for Head Start have concerns about child care. The Denton ISD saw the need for child care and created a wrap-around partnership for after school care with Denton City County Day School. There is a total of 28 student enrolled and 13 of them are in the Denton ISD Head Start program.

Other Needs

69 responses



70 responses



Dental Service is a major concern for Denton County. Many families and individuals without insurance or limited dental coverage have reported that there are no resources for adults and limited resources for children. According to Health Service of North Texas, if the person is on Medicaid or uninsured it is hard to find a dentist who can give them care. The survey given to parents applying for Head Start indicated finding dental care as a concern. Parents were asked what health services they needed. 28.6% of them stated that dental services were needed. Denton ISD Head Start developed a partnership with Texas Woman's University Dental Hygiene Clinic. The clinic provides free dental exams/screenings for the Head Start students. Please see graph below for other health concerns.

Nationally, 34% of African American and American Indian, 28% Latino, 20% two or more races, 12% Asian Pacific Islander, and 12% non-Hispanic children lived in poverty in 2016. About 20 million lived in families where no parent had full-time, year-around employment. It is estimated that 23.6 million children lived with families that had a high burden of housing cost.

In Texas, according to the Texas Labor Market Review trade, transportation & utilities saw the highest monthly jobs increase among major industries in Texas, with 8,900 jobs added. The 72,700 jobs added over the year is the largest increase in this industry since September 2015. Employment increased in 18 out of 26 areas in October for a net increase of 27,900 jobs.

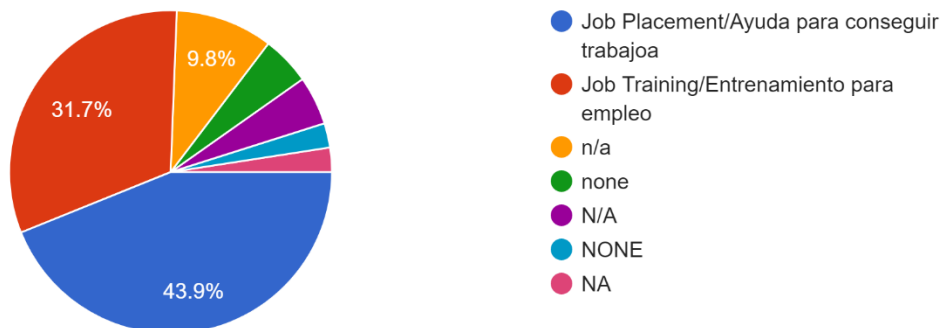
Denton has an unemployment rate of 3.6%. The US average is 5.2%.

Denton has seen the job market increase by 3.1% over the last year. Future job growth over the next ten years is predicted to be 42.6%, which is higher than the US average of 38.0%.

Parents that completed the Head Start survey listed job placement as a top need in employment at 43%. 13 parents listed job training as a need. See the chart below:

Employment Needs

41 responses



Major Employers in Denton

Peterbilt Motors	University of North Texas
Morrison Milling,	Texas Woman's University

Denton County	Denton ISD
Texas Health Presbyterian	Medical City of Denton
Sally Beauty Supply	Jostens, Inc
Readerlink	Tetra Pak Materials, L.P
Flowers Baking Company	Safran Electrical and Power
Denton State Supported Living Center	FEMA
Denton County MHMR	Progressive Industries

Recommendation

- Work closely with community partners in order to collaborate on expanding parenting classes regarding housing, transportation, health services and employment.
- It light of the number of children living in economically low-income homes, Head Start may consider placing a special focus on how to help parents obtain skills for earning a higher wage. Collaborate with the Workforce agency here in Denton.

Community Resources- Available to meet the identified needs

DENTAL

TWU Dental Hygiene Clinic
 1314 Bell Ave, Denton, TX 76204
 940-898-2888

MENTAL HEALTH

Denton County MHMR
 1214 Bell Ave, Denton, TX 76204
 940-381-5000

DISD Student & Campus Support Services

230 N. Mayhill Rd. Denton, TX 76208
940-369-4973

Texas Department of Human Services

3612 E. McKinney St. Denton, TX 76209
940-320-5700

TWU Marriage and Family Clinic

304 Administration Dr. Denton, TX 76204
940-565-2066

UNT Child and Family Resource Center

1180 Union Circle Denton, TX 76203
940-565-2066

UNT Counseling and Human Development Center

425 S. Welch St. Denton, TX 76203
940-565-2970

NUTRITIONAL

TANF and SNAP Food Stamps (EBT)

3612 E. McKinney St. Denton, TX 76209
1-877-541-7905 & 940-320-5700

TWU Counseling Center

304 Administration Dr. Denton, TX 76204
940-898-3801

WIC

535 S. Loop 288 Ste. 1066, Denton, TX 76205
940-349-2930

EDUCATIONAL

Denton Literacy Program (DISD)

815 Cross Timber St., Denton, TX 76205
940-369-0400

Denton Regional Day School for the Deaf (AWECC)

1205 W. University Dr. Denton, TX 76201
940-369-4075

GED/ESL Classes, Adult Education Department (DISD)

815 Cross Timber St., Denton, TX 76205
940-369-0400

SOCIAL

Community Services Inc.

401 East Sixth Ave. Corsicana, TX 75110
1-800-831-9929 & 903-872-2401

Denton County Friends of the Family

4845 W. Sycamore St. Corinth, TX 76210
940-387-5131

HOPE, INC

117 W. Sycamore St. Denton, TX 76201
940-382-0609

Interfaith Ministries

1109 N. Elm St. #1 Denton, TX 76209
940-565-5479

Salvation Army

1508 E. McKinney St. Denton, TX 76209
940-566-3800

Simmons Street Church of Christ
411 Simmons Street Denton, TX 76205
940-387-5622

SPAN Transportation
1800 Malone St. Denton, TX 76201
940-382-1900

Texas Department of Human Services
3612 E. McKinney St. Denton, TX 76209
940-320-5700



Transportation

Denton County Transportation Authority is another source of transportation.

The Denton County Transportation Authority is the transit authority that operates in Denton County, Texas. It operates bus service in three cities within Denton County, as well as the A-train, a regional commuter rail line to Carrollton.

NON-PROFIT DISCOUNT PROGRAM

The DCTA Non-Profit Discount Program offers Denton County – based non-profit organizations a discounted rate on local and regional passes. Every group is different and has specific needs, so our Non – Profit Pass Program offers flexibility for charitable organizations to serve the needs of the community.

Pass Details:

Non – profit 502©3 organizations are eligible for a 50% discount on the following passes, purchased in quantities of 10:

- Monthly Local and Regional Pass
- One – Way Trip Connect Bus Pass
- Monthly Connect Bus Pass

Required Documentation:

Non- profit organizations wishing to purchase discount tickets must provide a hard copy of their valid EIN for our file.

FREE FARES

Complimentary transportation is available for those who meet at least one of the following criteria:

- Sworn peace officer in uniform or with a visible badge
- Children under five with a fare-paying adult
- Denton County active jurors with valid juror summons or current juror badge
- ADA – certified riders with valid IDs (excluding Access service)
- NCTC IDs accepted on NCTC Campus Shuttle, Highland Village and Denton and Lewisville Connect in lieu of fare
- UNT IDs accepted on UNT Campus Shuttle, Highland Village Connect Shuttle and Denton and Lewisville Connect in lieu of fare

Section 7: Community Strengths and Identified Needs

Strengths of our Community:

- There are a wide-range of services offered for children ages birth to age 8 (Early Childhood). Expansions are continuing to develop.
- Community is rich in resources available to our families.
- DISD has wide-range of programs and services and collaborates with our Community.
- DISD has a large service area and outreach.
- United Way of Denton County helps to keep the community united and connected.
- Our community continues to grow and develop.
- Our community has three colleges which offers great partnerships for services/resources.
- Community has resources for mental health needs.
- School district has strong special education programs.
- Community & schools have a variety of resources for helping homeless residents.
- Community has a variety of programs addressing the needs of impoverished residents.
- Community has a wide variety of resources for hunger, including multiple food banks.
- Denton has multiple resources assisting with children in foster care.
- Community is rich in Medical and Dental programs.
- Community is diverse and holds multi-cultural events & celebrations.

- Community has a strong spirit of volunteerism.

Needs of our Community:

- Mental Health issues are on the rise.
- There are still many 3-4 yr. old children that are not attending a Pre-K program that would greatly benefit from it.
- More students are qualifying as ESL vs. Bilingual according to our data. Therefore, our program class options for ESL and Bilingual students need to be continuously monitored to match the identified needs.
- Poverty and Homelessness continue to be issues within our community. Teen mothers are on the rise and many mothers are Single parents struggling to make ends meet.
- Lack of Education for many of our parents is a concern. More GED classes are needed.
- Nutrition is a concern. Over-weight, Obese, and Under-weight continue to be issues that we are faced with.
- Adverse Childhood Experiences (ACE) are on the rise. This trauma can then lead to Mental health issues, poor behaviors, etc. More Mental Health education and awareness is needed.
- Many families in the community are uninsured.
- Many families face issues/barriers due to immigration.
- Transportation is an issue for many.
- Many LEP and Economically Disadvantaged students are not performing on reading level by third grade.
- There is a lack of placements for children in need of Foster Care in our County.
- The process to apply for and get approval for Medicaid is timely.
- Shelters seem to be full in our community.