



# **Resource Campus Designation Stafford Elementary**

---

*Jay Ashby*

*Executive Director of Innovation and Program Development*



# Resource Campus Designation

- The Resource Campus designation is a turnaround school model established by HB 1525 during the 87th Texas Legislative Session and updated in the 89th.
  - In its first legislative iteration, no districts in Texas achieved RCD. The most recent legislative session aimed to make it more attainable.
- Campuses eligible for the Resource Campus designation may generate additional district revenue to help sustain innovative practices over time.



# What are the Resource Campus Eligibility Criteria


- 3 ratings of D, F, NR/NR1365\* within the last 10 years
- TIP required to obtain and maintain the designation
- ACE turnaround plan implementation
- Teacher Incentive Allotment (TIA)– 50% of teachers in foundation curriculum must have a designation
- Additional Days School Year (ADSY)– if elementary or middle school;
- Family Engagement Plan
- Positive Behavior Plan
- Plan to Implement High-Quality Instructional Materials (HQIM)
- Staffing Requirements:
  - All campus teachers of record in foundation curriculum must have 2 years teaching experience
  - Principals and teachers must apply or reapply
  - 1 counselor per 300 students & 1 certified mental health professional
- Annual fidelity of implementation data submission



# Campus Resource Designation

**ACE**  
Fully implement the full model to target campus-specific needs.

**TIA**  
50% of teachers teaching foundation curriculum must be designated.

  
**Teachers**  
All teachers of record in foundation curriculum must have 2 years of teaching experience.



**ADSY**  
A base number of 175 days with a minimum of 6 ADSY for a total of at least 181 days.

**HQIM**  
Adopt rigorous research-based materials for core content.

**Student Support**  
1 counselor for every 300 students and 1 Certified Mental Health Professional.

# Campus Resource Designation

## ACE

Fully implement the full model to target campus-specific needs.

**Stafford's 21-22 turnaround model met many of the ACE requirements**

## TIA

50% of teachers teaching foundation curriculum must be designated.

**Stafford's core curriculum staff currently is 54% TIA Designated**



## Teachers

All teachers of record in foundation curriculum must have 2 years of teaching experience.

**Met. Stafford has seven teachers that are designated as Teacher Apprentices with assigned Teacher Mentors**



## ADSY

A base number of 175 days with a minimum of 6 ADSY for a total of at least 181 days.

**The proposed spring calendar meets these requirements.**

## HQIM

Adopt rigorous research-based materials for core content.

**Stafford uses Bluebonnet RLA and the adopted Amplify Math is approved**

## Student Support

1 counselor for every 300 students and 1 Certified Mental Health Professional.

**A certified Social Worker has been assigned to Stafford and an additional counselor position will be posted**

# Proposed Stafford Spring 2026 Calendar

Jan 2026						
S	M	T	W	T	F	S
				1	2	3
4	5	{6	7	8	9	10
11	12	13	14	15	16	17
18	19	20	21	22	23	24
25	26	27	28	29	30	31
						18
Feb 2026						
S	M	T	W	T	F	S
1	2	3	4	5	6	7
8	9	10	11	12	13	14
15	16	17	18	19	20	21
22	23	24	25	26	27	28
						18
Mar 2026						
S	M	T	W	T	F	S
1	2	3	4	5	6	7
8	9	10	11	12	13	14
15	{16	17	18	19	20	21
22	23	24	25	26	27	28
29	30	31				
						17
Apr 2026						
S	M	T	W	T	F	S
			1	2	3	4
5	6	7	8	9	10	11
12	13	14	15	16	17	18
19	20	21	22	23	24	25
26	27	28	29	30		
						20
May 2026						
S	M	T	W	T	F	S
					1	2
3	4	5	6	7	8	9
10	11	12	13	14	15	16
17	18	19	20	21*	22	23
24	25	26	27	28	29	30
31						15
Jun 2026						
S	M	T	W	T	F	S
	1	2	3	4	5	6
7	8	9	10	11	12	13
14	15	16	17	18	19	20
21	22	23	24	25	26	27
28	29	30				

## Holidays

Labor Day	1-Sep
Columbus Day	13-Oct
Thanksgiving	27-Nov
Christmas Break	December 22-January 2
MLK Holiday	19-Jan
President's Day (student holiday)	16-Feb
Spring Break	9-13 Mar
Memorial Day	25-May
Juneteenth	June 19, Holiday June 18
Independence Day	7/4/2025, Holiday July 3

This proposed calendar utilizes a 445 minute school day.

## Calendar Key

{ } Semester Grading Period Begins or Ends

Professional Development Day

Holidays

Alternative Staff Development Day (AISD Closed)

Work Day

Additional Days School Year Days (ADSY)

\* Early Release Days

First Semester Days - 83

Second Semester Days - 98

## Teacher Days

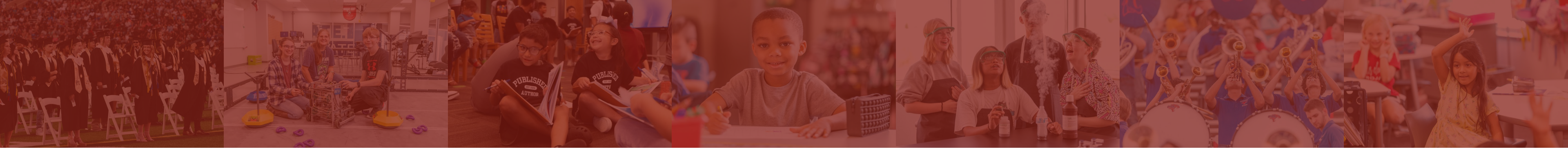
Days with students	181
Professional Development Days	7
Work Days	4
Alternative Staff Development	3
Total Teacher Days	195





# What is the Designation Process?

- Meet all criteria prior to application process
- Submit Letter of Intent to TEA
- Submit designation application
- TEA review and due diligence
- Designation acceptance



# How does the Funding Work?

- Campuses that become designated as Resource Campuses are eligible for additional funding under the SB 1882 funding mechanism.
- This funding applies to districts with more than 5,000 students in ADA, in most cases.
- The funding is a permanent annual increase in the FSP entitlement for all students enrolled at the campus, each year moving forward, as long as the campus continues to implement the Resource Campus program requirements.
- Typical allotments range from \$900-\$1000 per student. AISD projected allotment is higher than this range.





# Stafford Staff Feedback

Stafford leadership and teacher leaders developed a plan for RCD requirements.

This plan was presented to the entire staff.

97% of staff members surveyed expressed support for the plan.



# Stafford Family Feedback

## Results of family survey:

- 89% said they were supportive or neutral regarding adding 4 additional days
  - 53.4% Very Supportive or Somewhat Supportive; 35.6% Neutral
- 64% said they were interested in after school enrichment
  - 30% said they may be interested in after school enrichment
- 45% said they were interested in summer learning opportunities
  - 37% said they may be interested in after school enrichment





# Next Steps

- December Regular Meeting Board Action: Consider approval of changes to 25-26 Stafford Elementary Academic Calendar



# Proposed Stafford Spring 2026 Calendar

Jan 2026						
S	M	T	W	T	F	S
				1	2	3
4	5	{6	7	8	9	10
11	12	13	14	15	16	17
18	19	20	21	22	23	24
25	26	27	28	29	30	31
						18
Feb 2026						
S	M	T	W	T	F	S
1	2	3	4	5	6	7
8	9	10	11	12	13	14
15	16	17	18	19	20	21
22	23	24	25	26	27	28
						18
Mar 2026						
S	M	T	W	T	F	S
1	2	3	4	5	6	7
8	9	10	11	12	13	14
15	{16	17	18	19	20	21
22	23	24	25	26	27	28
29	30	31				
						17
Apr 2026						
S	M	T	W	T	F	S
			1	2	3	4
5	6	7	8	9	10	11
12	13	14	15	16	17	18
19	20	21	22	23	24	25
26	27	28	29	30		
						20
May 2026						
S	M	T	W	T	F	S
					1	2
3	4	5	6	7	8	9
10	11	12	13	14	15	16
17	18	19	20	21*	22	23
24	25	26	27	28	29	30
31						15
Jun 2026						
S	M	T	W	T	F	S
	1	2	3	4	5	6
7	8	9	10	11	12	13
14	15	16	17	18	19	20
21	22	23	24	25	26	27
28	29	30				

## Holidays

Labor Day	1-Sep
Columbus Day	13-Oct
Thanksgiving	27-Nov
Christmas Break	December 22-January 2
MLK Holiday	19-Jan
President's Day (student holiday)	16-Feb
Spring Break	9-13 Mar
Memorial Day	25-May
Juneteenth	June 19, Holiday June 18
Independence Day	7/4/2025, Holiday July 3

This proposed calendar utilizes a 445 minute school day.

## Calendar Key

{ } Semester Grading Period Begins or Ends

Professional Development Day

Holidays

Alternative Staff Development Day (AISD Closed)

Work Day

Additional Days School Year Days (ADSY)

\* Early Release Days

First Semester Days - 83

Second Semester Days - 98

## Teacher Days

Days with students	181
Professional Development Days	7
Work Days	4
Alternative Staff Development	3
Total Teacher Days	195





# Questions?