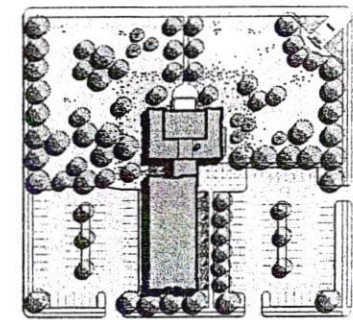
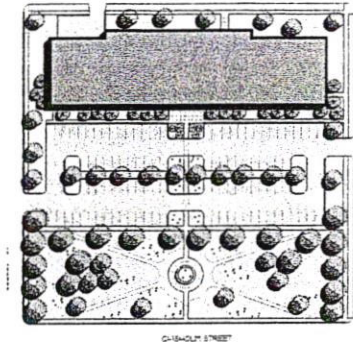


**Alpena County  
Facilities Study and Master Plan  
Alpena, Michigan**



Alpena County Board of Commissioners retained our firm to help resolve a number of facility issues related to the historic courthouse, courthouse annex, and the youth center building. These issues included rehabilitation/restoration of various building components, building systems, and building areas. In addition, the county wanted to address and resolve barrier free access deficiencies in all of these buildings. Since the county courthouse is a nationally registered historic site, all proposed upgrades and renovations needed to comply with the Secretary of the Interior's Standards for Rehabilitation and also be approved by the State Historic Preservation Office. Also, the County Board wanted to formulate a facilities master plan for the historic courthouse, courthouse annex, youth center and the FIA building (a county owned building leased to the state until 2013) all currently located on two county owned adjoining sites in the City of Alpena.

Our work plan consisted of a two phased approach. The first phase included a facilities audit of the courthouse, courthouse annex and youth center; a space and needs analysis for these buildings; a review and study of all pertinent codes; a cost estimate for the proposed work; a sequence or phasing plan, and a final report summarizing our work. The second phase included a facilities master plan for all existing and proposed county facilities needs (additions, renovations, etc.) for these two sites. The Facilities Master Plan provides the county a long range plan to forecast and budget their facility needs for the next ten years.

**John Dziurman Architects Ltd.**