



# 2019-2020 Pricing Proposal

**Cedar Hill ISD**

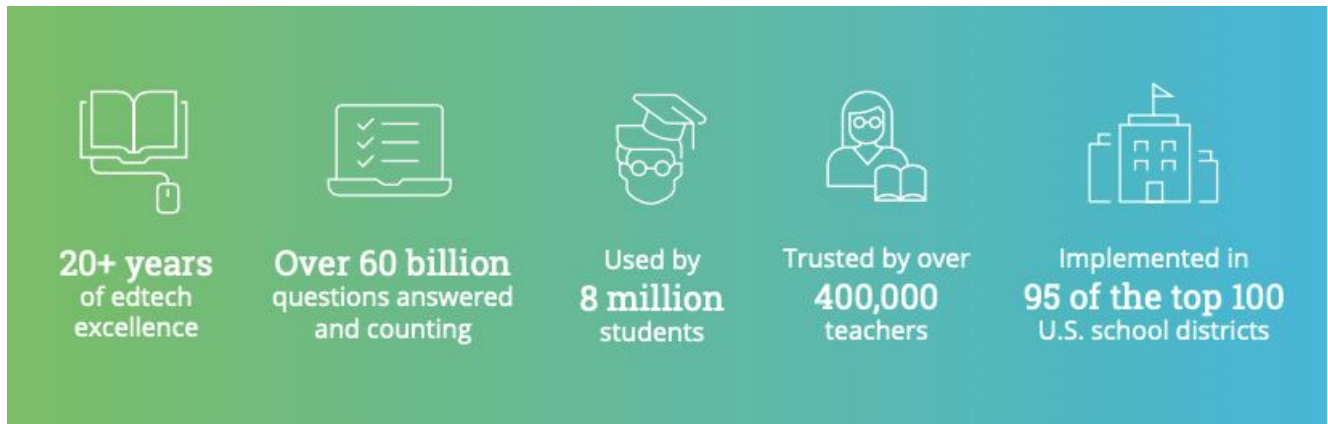
April 14, 2020

**Joni Mohr**

IXL Educational Consultant • 972-333-6456 • [jonim@ixl.com](mailto:jonim@ixl.com)

## About IXL

IXL Learning is dedicated to creating the best educational technology possible. Our flagship product, IXL, is an integrated personalized learning platform that is proven to improve learning outcomes for all students. We have spent more than 10 years perfecting IXL, and today it is one of the most widely used and trusted educational products in the country.



IXL's platform is built on four key components that work together seamlessly to give teachers everything they need to differentiate instruction and help students grow.

IXL's **comprehensive curriculum** offers 8,000+ skills across five subjects to support nearly any learning need from pre-K to 12th grade. Aligned to the Common Core Standards, standards for all 50 states, high-stakes assessments, and many popular textbook series, our extensive content library has the right skills to guide students toward mastery at their own pace.

The **IXL Real-Time Diagnostic** is a fresh approach to assessment that gives teachers a better understanding of their students' needs and how to help them succeed. It provides reliable, up-to-the-minute insights on students' grade-level proficiency in key math and language arts strands, so teachers can make effective instructional decisions every day..

Using insights from both student work in the curriculum and the Continuous Diagnostic, IXL offers **personalized guidance** for every learner. Our personalized action plans provide a flexible pathway for growth, seamlessly linking students to the skills they need to fill knowledge gaps and build on their current understanding.

**IXL Analytics** gathers data from student work in IXL and uncovers insights that help teachers make truly data-driven decisions. It provides teachers with better data and actionable next steps to effectively impact student learning. And our Analytics for School Leaders gives administrators a window into student achievement and overall school success.

## The IXL Effect

IXL's personalized learning platform is proven to impact student learning, and tens of thousands of schools around the country are already experiencing the IXL Effect. In 20 statewide efficacy studies covering more than 49,000 campuses, IXL schools outperformed all the others – and the longer they used IXL, the better they performed. For evidence of IXL's impact on student achievement, visit [www.ixl.com/research](http://www.ixl.com/research).

## Awards and Recognition

**//CODiE//**  
2018 SIIA CODiE WINNER

THE EDTECH  
AWARDS



COOL TOOL  
WINNER 2018

winner!  
2017 AWARDS  
of EXCELLENCE  
TECH & LEARNING



## Pricing Details

### One-year Implementation

Number of students	IXL Subjects	Discount applied	Credit from existing licenses	Cost
4500	math	10%	-	<b>\$35,270</b>

### Three-year Implementation

All of the subscription options listed below include a **22% discount** on the total cost of the license. Each option also includes a payment plan that will allow you to pay for the subscription in annual installments. Payment plan details for each option are listed in the last three columns. The bolded cost for the first year would be due at time of purchase, should you choose that option.

Number of students	Subjects	Regular 3-year cost	Discount Applied	Credit from existing licenses	New 3-year cost	Amount due at purchase (first year)	Cost for second year	Cost for third year
4500	math	\$104,695	22%	-	\$83,700	<b>\$27,900</b>	\$27,900	\$27,900

### Professional Learning Services

IXL’s team of experts is here to help you achieve your goals – from the district to the school to the classroom. We offer highly engaging professional learning experiences and flexible delivery options to meet the needs of any district.

#### On-site Experiences

IXL’s on-site professional learning experiences are designed to empower teachers with in-depth knowledge about IXL and practical strategies for using the platform to drive learning every day.

**IXL Live: School Edition:** Bring our buzzed-about IXL Live experience to your schools! This 6-hour interactive workshop covers everything teachers need for successful implementation.

**Flex on-site:** Our 90-minute flex sessions are focused on practical strategies for using IXL in daily instruction. Opt for one or more sessions based on your schedule and PD needs.

**Train the Trainer:** This 6-hour session prepares your trainers to deliver effective IXL professional development. Includes practice time and resources to support future IXL trainings in your district.

#### Virtual Sessions

IXL's virtual learning sessions are a convenient way to help your teachers get the most out of IXL. Choose from our comprehensive Foundations or Elevate courses, or work with us to craft a custom experience that supports your district's instructional goals.

### **eLearning Library**

The IXL eLearning Library offers on-demand professional learning for your teachers all year long. With more than 40 modules on every essential feature of IXL, teachers can get the information they need, the minute it's needed.

**The cost of professional development has been included in this proposal.**