

DEANNA DAVENPORT

NEW ELEMENTARY SCHOOL

Board Update
APRIL 2025

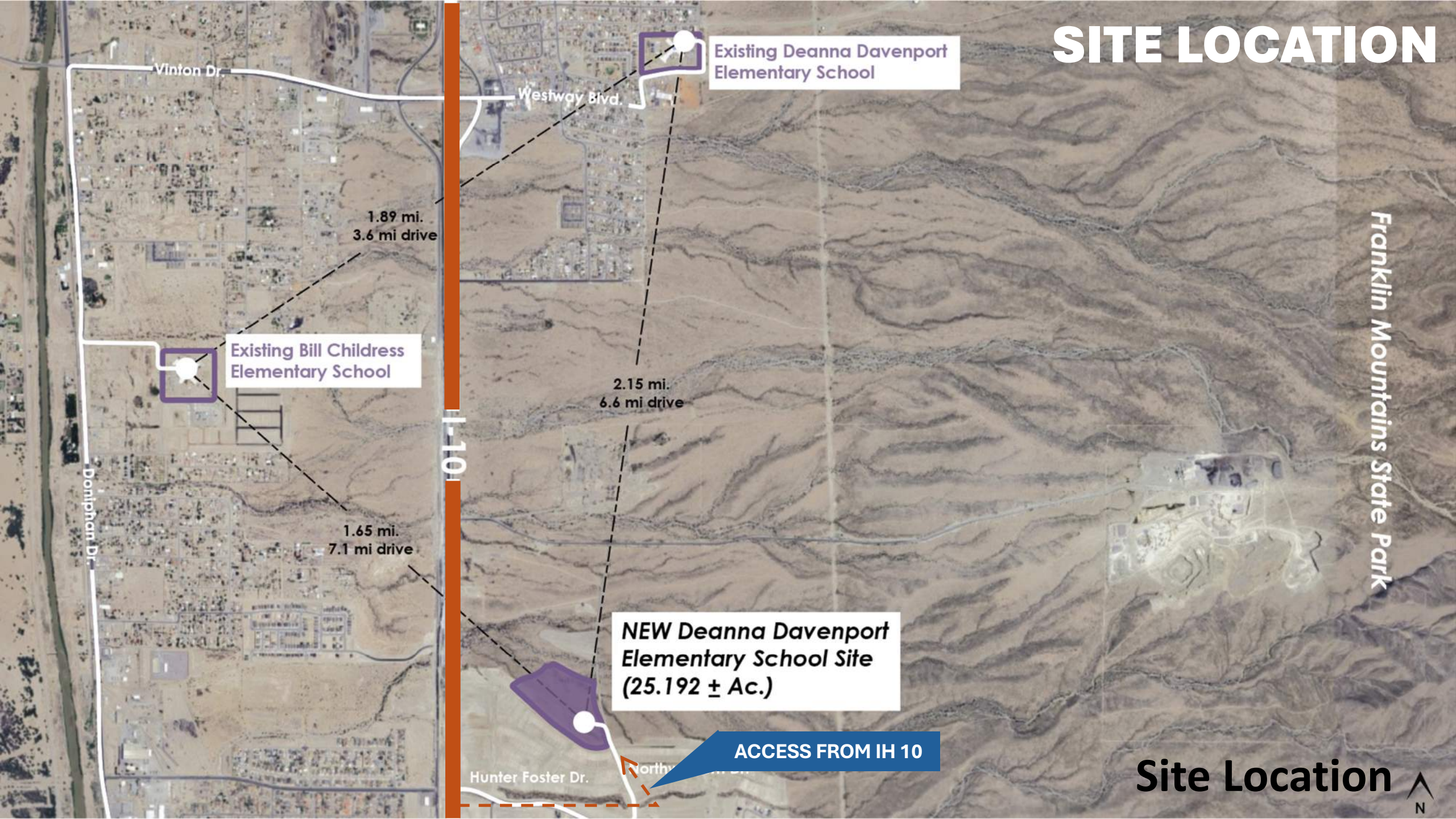


pfluger



LDCM SOLUTIONS, LLC
TRUST. VALUE. INTEGRITY.

SITE LOCATION



Franklin Mountains State Park

Existing Deanna Davenport Elementary School

Westway Blvd.

1.89 mi.
3.6 mi drive

Existing Bill Childress Elementary School

1.65 mi.
7.1 mi drive

2.15 mi.
6.6 mi drive

NEW Deanna Davenport Elementary School Site
(25.192 ± Ac.)

ACCESS FROM IH 10

Hunter Foster Dr.

Northway Dr.

Site Location



DESIGN PROCESS



GUIDING PRINCIPLES

The design of the new elementary school is deeply rooted in the guiding principles unearthed through community collaboration. These principles, shaped by shared values and aspirations, serve as a foundation to ensure the school reflects the community's vision while fostering a sense of belonging and purpose

1

Well-being

Davenport ES will serve as an important tool in the role of **well-being** for both students and staff. Our campus is committed to a strong connection to **nature**, integrating **biophilic design** and **movement** into the learning environment to address student needs and promote **social well-being**.

2

Future-focused

The design of Davenport ES will include learning environments essential for **preparing students for their future**. Spaces that support **collaboration, critical thinking, peer mentoring, and a balanced use of technology** as a tool ensure students are well-prepared for their **future**.

3

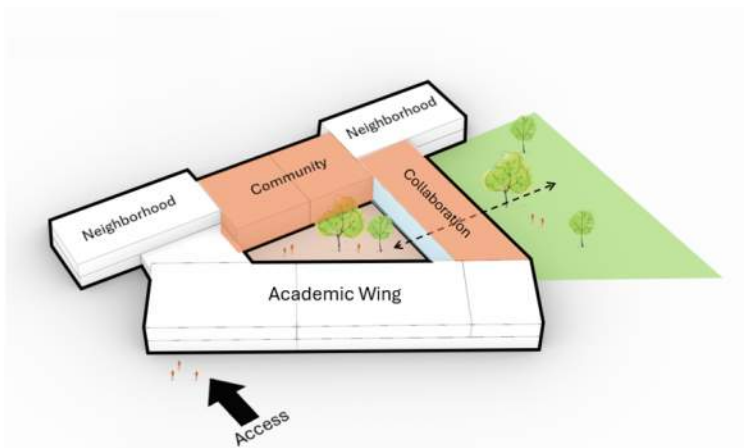
Versatile & Adaptable

The design of Davenport ES will feature **versatile** and **adaptable spaces** that support systems for **student collaboration and differentiation**, empowering both students and teachers to work together in environments **tailored to meet the diverse learning needs** of all students.

DESIGN EXPLORATION

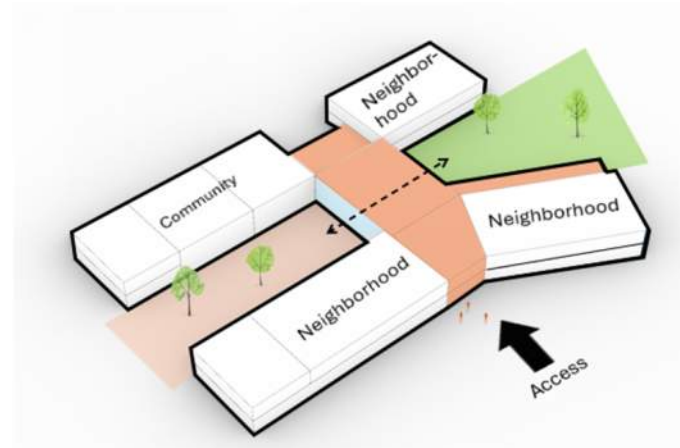
The following concept diagrams explored three distinct approaches to spatial and program organization. Each concept highlights unique opportunities for how spaces interact with one another and with outdoor areas, offering varied solutions to support functionality, creativity, and connection across the campus.

1 Plaza Central (Central Plaza)



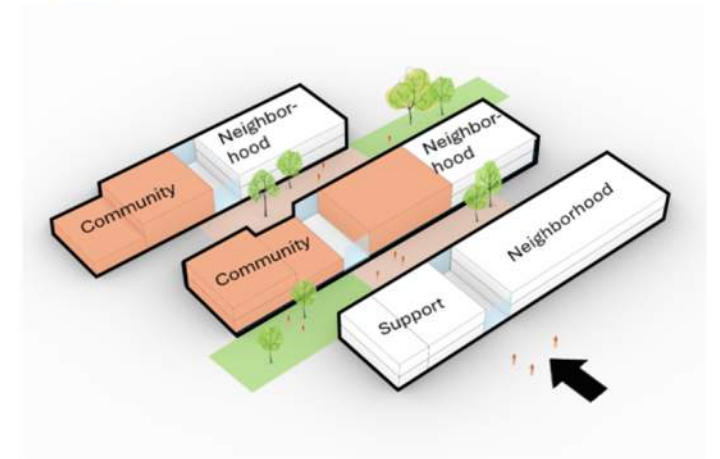
Committee Feedback
3.9 / 5

2 El Mirador (The Lookout)



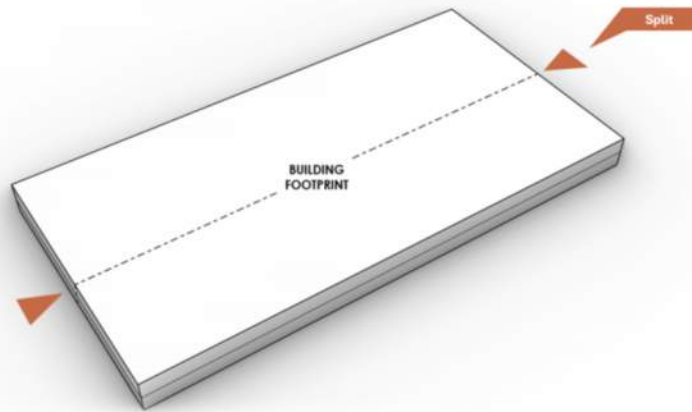
Committee Feedback
4.5 / 5

3 Las Terrazas (The Terraces)

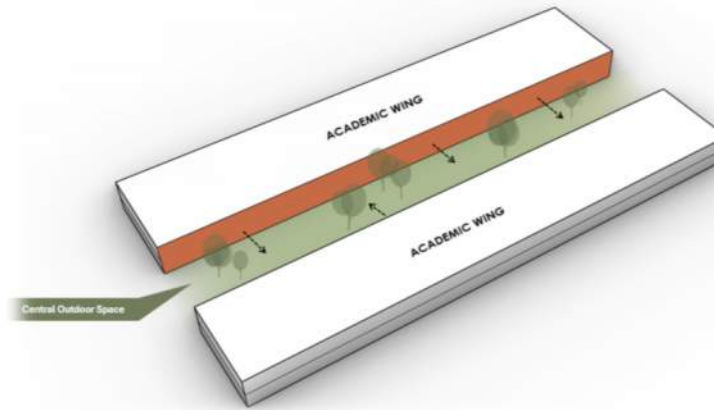


Committee Feedback
4.1 / 5

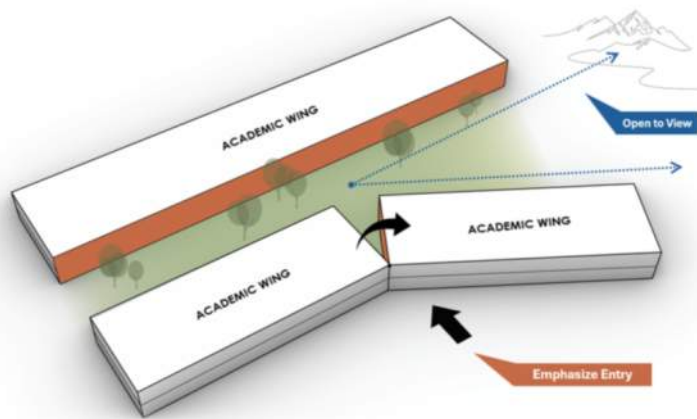
CONCEPT EVOLUTION



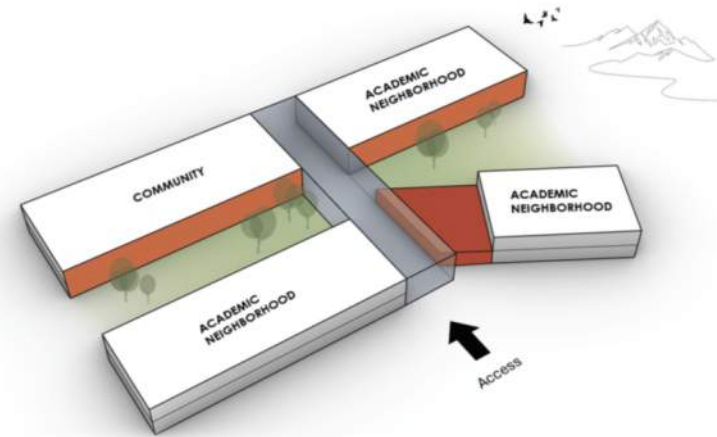
- 1** A simple two-story design with clean geometry centers around a strong central axis, ensuring clarity, balance, and intuitive organization.



- 2** Enhancing the central axis with outdoor connectivity, the design integrates secure courtyard spaces, fostering interaction and connection with the outdoors.

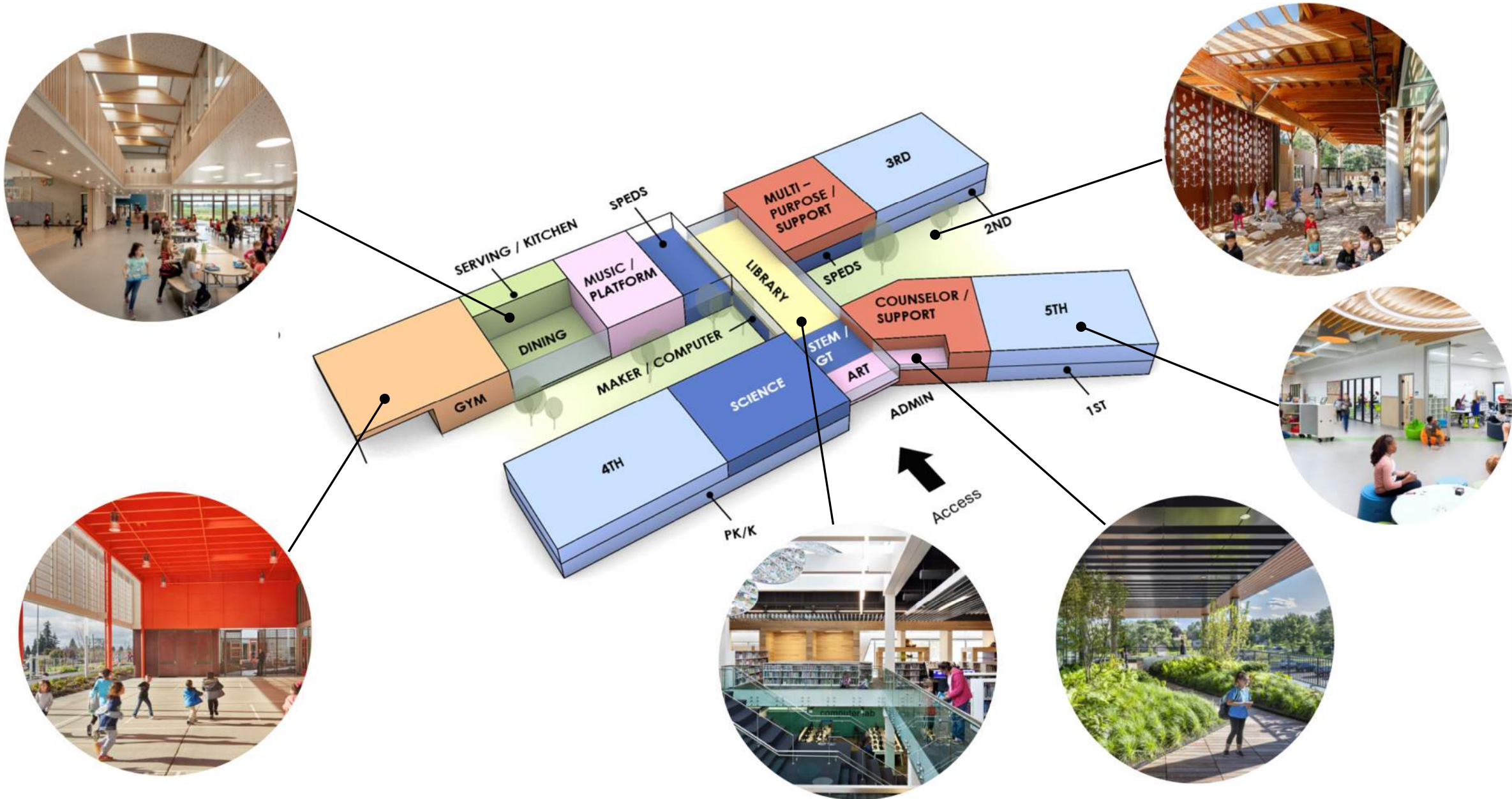


- 3** Part of the building is rotated to capture and celebrate the iconic Franklin Mountains, a landmark deeply rooted in the region's identity and heritage.



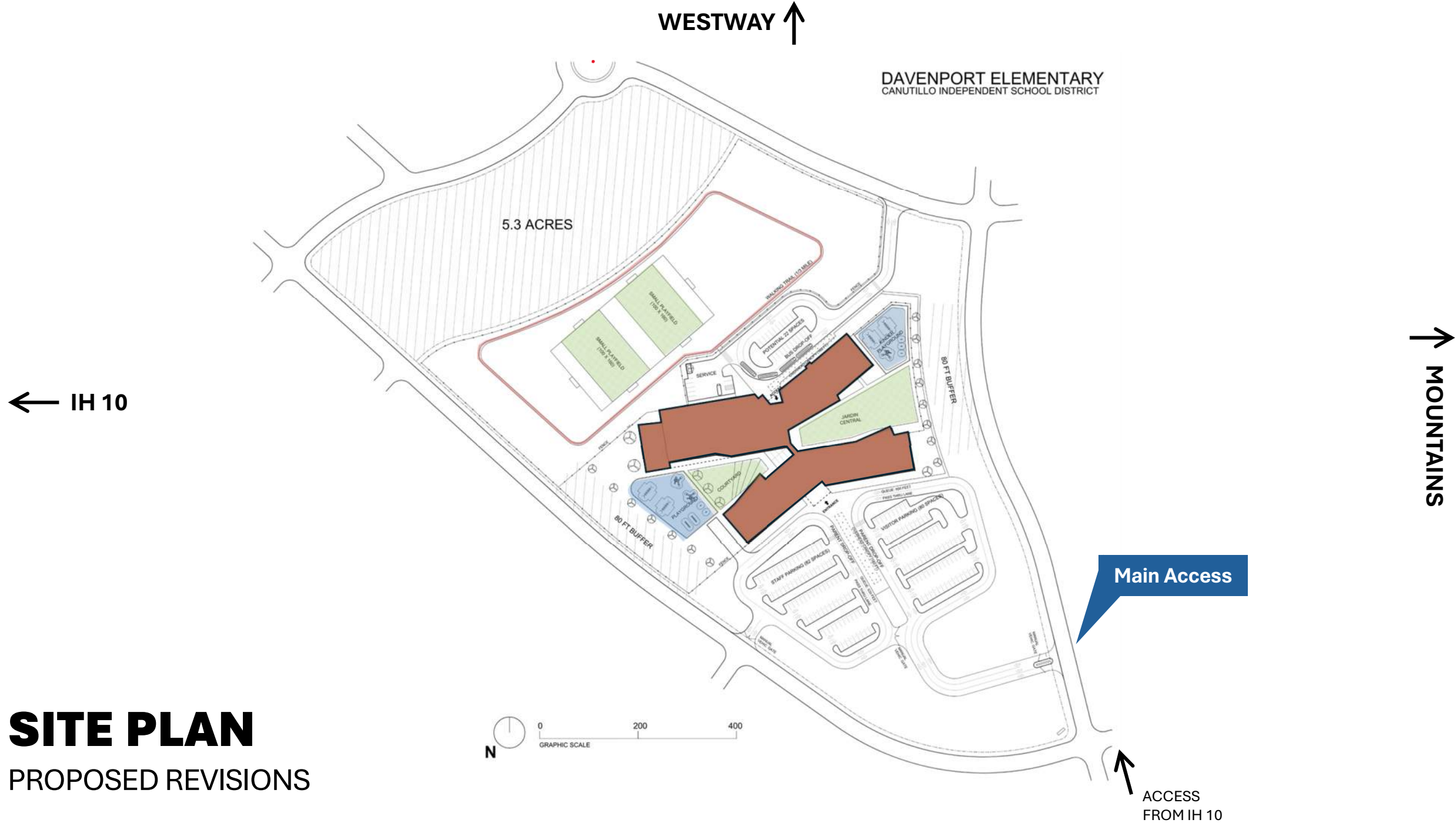
- 4** The school is unified through a shared program that centrally connects all parts of the campus, fostering a vibrant and cohesive learning environment.

PROGRAM + DESIGN FEATURES



SITE PLAN

PROPOSED REVISIONS



Canutillo Independent School District

Canutillo Independent School District

← BUS DROP OFF →

PREK & KINDER

2ND – 5TH
PLAYGROUND

PRE-K – 1ST
PLAYGROUND

Courtyard

| PORCH

Jardin
Central

2ND GRADE

MAIN ENTRANCE

LEVEL 01 FLOOR PLAN

1ST GRADE



LEVEL 02 FLOOR PLAN
02.24.2025 1:32



EL MIRADOR
THE LOOKOUT



THE DESIGN

The presence of the mountains influences how the building **unfolds**, opening toward the horizon and **framing** key views that connect students to the landscape.

Rooflines **lift and shift**, inspired by the ridges and valleys, allowing light to filter in and creating a sense of **movement**.

Strategic openings, courtyards, and pathways align with the mountains, drawing **natural light** and fresh air into learning spaces while fostering a seamless **flow between indoors and outdoors**.

SURVEY RESULTS – ALIGNS EXTREMELY WELL



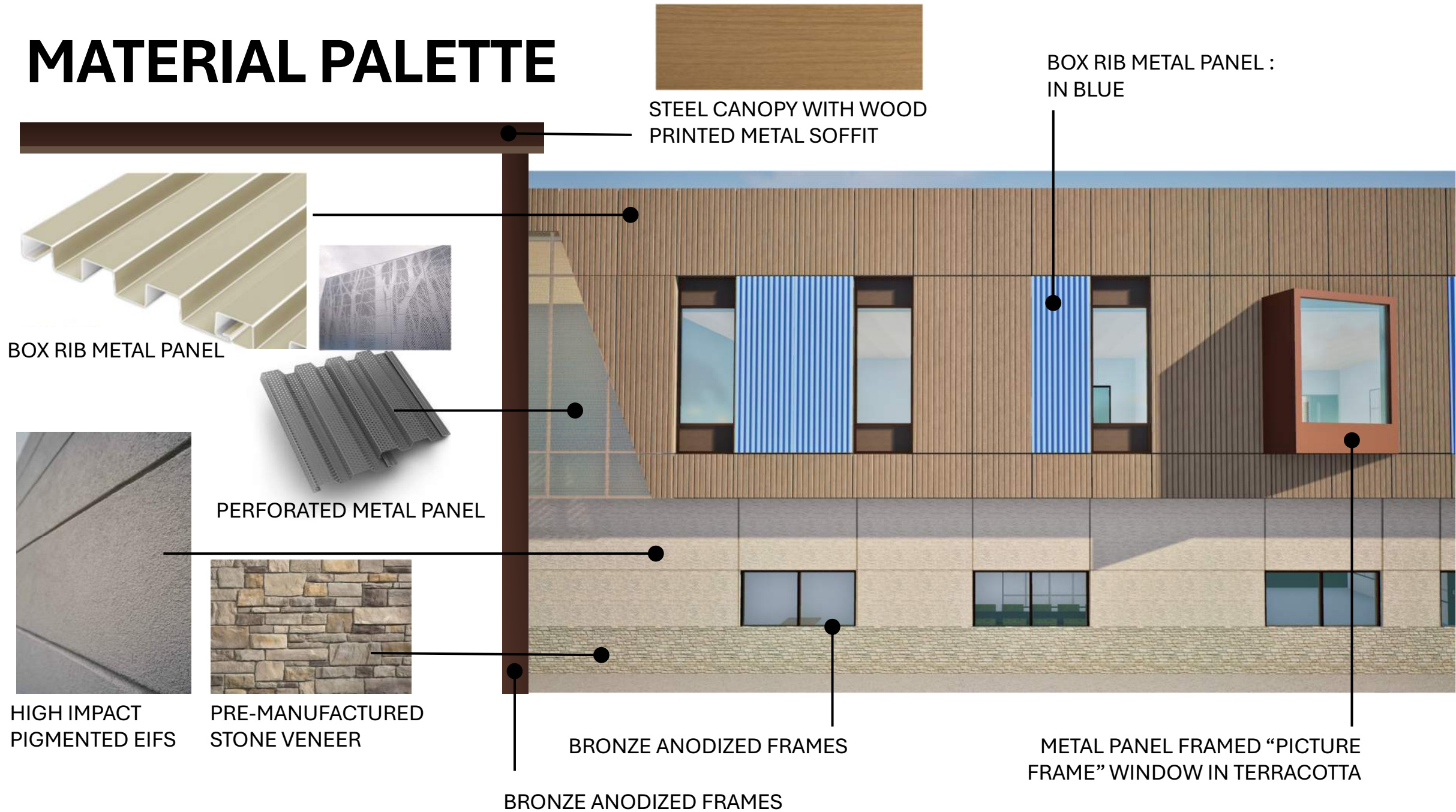


DRIVE APPROACH

PRELIMINARY EXTERIOR MASSING



MATERIAL PALETTE





FRONT PERSPECTIVE



FRONT PERSPECTIVE



FRONT PERSPECTIVE



JARDIN CENTRAL



COURTYARD



SURVEY RESULTS – ALIGNS EXTREMELY WELL

COMMUNITY



SURVEY RESULTS – ALIGNS EXTREMELY WELL

CLASSROOM



COLLABORATION



EL MIRADOR

THE LOOKOUT



INTERIOR CONCEPT

Inspired by the rugged beauty of the Franklin Mountains, the interior design draws from the natural layers, forms, and textures of the landscape.

Inside the building, this connection comes to life through layered ceiling planes that echo the ridges and contours of the mountain range, creating depth, warmth, and movement in key learning and collaboration spaces.

COLOR STUDY



Franklin Mountains State Park



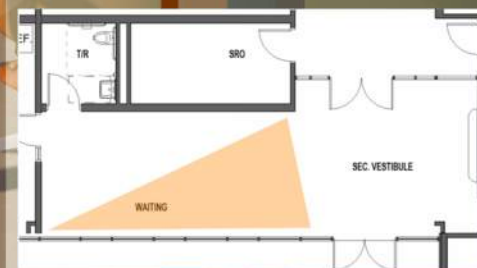
District Colors



MATERIAL PALETTE

FINISHES ARE SUBJECT TO CHANGE

									
PAINT	LAY-IN CEILING	LAY-IN CEILING	WOOD CEILING	WAINSCOT WALL TILE	ACCENT WALL TILE	ACCENT WALL TILE	ACCENT WALL TILE	ACCENT WALL TILE	
									
METAL WALL PANEL	PERFORATED METAL RAILING	ACRYLIC INFUSED WOOD	FELT LIGHTING & BUFFLES	SOLID SURFACE	PLASTIC LAMINATE	ACCENT PLASTIC LAMINATE	VINYL FABRIC	SLAT WALL PANEL	
									
CLINIC CURTAIN	FABRICS	STAGE CURTAIN	ROLLER SHADES	FIBERGLASS	PLASTIC LAMINATE	PLAM WALL PANEL	TOILET PARTITION	TACKBOARD	
									
QUARRY TILE	EPOXY FLOOR	LVT FLOOR	ACCENT LVT FLOOR	RUBBER STAIR TREAD/RISER	ACCENT LVT FLOOR	ACCENT LVT FLOOR	ACCENT LVT FLOOR	ACCENT LVT FLOOR	ACCENT LVT FLOOR



VESTIBULE



RECEPTION

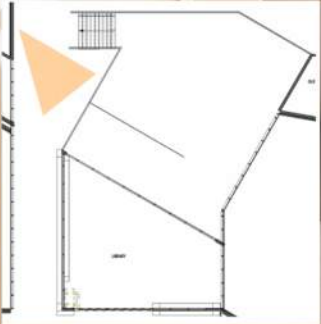


LEARNING STAIR



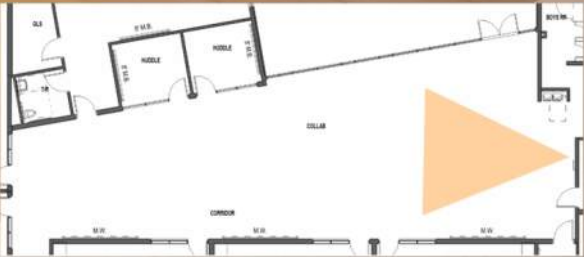


LIBRARY CORRIDOR





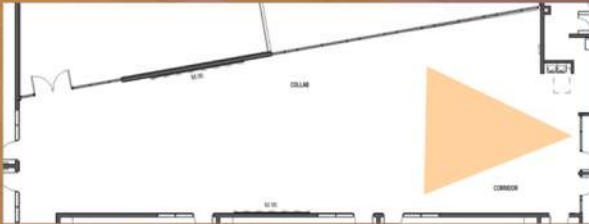
LIBRARY



NEIGHBORHOOD COLLABORATION



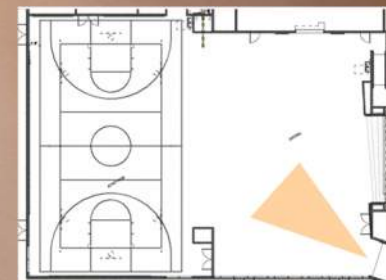
NEIGHBORHOOD COLLABORATION





CAFÉ/STAGE





CAFÉ/GYM

Construction Budget – Deanna Davenport Elementary School

- CONSTRUCTION BUDGET
 - **\$50,468,664.00**

New Construction

- Administration
- Academic
- Fine Arts
- Health Clinic
- Special Education
- Library/Media Center
- Physical Education
- Visual & Fine Arts
- Food Services & Student Dining
- Building Support

Construction Cost Budget verified at completion of Design Development by



LDCM SOLUTIONS, LLC
TRUST, VALUE, INTEGRITY

MORE TO COME

Thank you!

pfluger



LDCM SOLUTIONS, LLC
TRUST, VALUE, INTEGRITY