



Bond Communications & Community Involvement Update Wednesday, March 21, 2018

Communications

- **Hazeldale Elementary** construction update
- **Raleigh Hills K-8** timeline community message sent out
- **ACMA** construction extension message sent out
- Finalized last construction updates for **Mountainside HS, Sato ES and Vose ES**
- Limited Public Access to **Mountainside HS** and **Sato Elementary** message sent out

Bond Rating Improves to AA

Standard and Poor's Global Ratings raised the Beaverton School District's credit rating from "AA-" to "AA". This shows that the District is financially sound and is good news for the District and for our taxpayers. The improved rating keeps our interest rate lower. That reduces the tax we need to impose to repay our bonds, thus keeping property taxes lower.

The improved rating is due to the "Rainy Day Fund" and Fund Balance Policy set by the Beaverton School Board. The establishment of a "Rainy Day Fund" in 2016 has strengthened the District's reserves and put us in a better position to weather another state funding downturn.

Community Involvement Activities

- Planning for William Walker Community Gathering prior to demolishing
 - o Sat. May 19, 11:00 a.m. - 2:00 p.m.
- All tour requests for new schools will be handled by Facilities Development
 - o Increasing technical requests are coming from architects, contractors, school districts, etc.

Communications strategies include: the BSD Briefs (updates in weekly community newsletter), social media, BSD website, Staff Talk, Staff Kudos, Front Page Features (main BSD webpage), BSD construction webpages, and staff and public meetings.

Watch our progress on the time-lapse web cam:
<http://www.dwpwebcams.com/hazeldale/>

General Contractor: Kirby Nagelhout
Architect: DLR Group
Substantial Completion: July 2018

Work Completed:

- 2nd level slab for south classroom wing

Work Underway:

- Sheet metal and colored panel siding along north classroom wing
- Window installation in north wing
- Roofing as weather permits
- Framing in the kindergarten classrooms
- Grading and LIDA facility preparations on Marlin Drive



Aerial view looking East



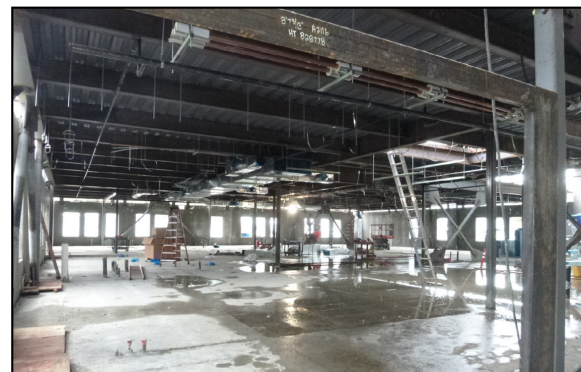
North facade of building



Freshly placed concrete



West facade of building



Kindergarten classroom wing

Fast Facts:

- Opened September 2017 to replace the school originally constructed in 1959
- Architect: DLR Group; General Contractor: Triplett Wellman
- 87,200 square foot building with 750-student capacity
- More than 140 parking spaces
- Solar panels generate 84 kW, 20% of what the building uses; enough power to support 8 average U.S. homes
- Abundant natural light and constant fresh outside air to all classrooms
- Reinforced structure allows immediate occupancy after a seismic event
- Centrally located gym, commons and courtyard provide a large venue for school and community events



Front of school



Library



Classroom



Commons area

Fast Facts:

- Opened September 2017 as the District's 34th elementary school
- Architect: DLR Group; General Contractor: Skanska USA
- 87,200 square foot building with 750-student capacity
- Solar panels generate 82 kW; 20% of what the building uses; enough power to support 8 average U.S. homes
- Abundant natural light and constant fresh outside air to all classrooms
- Reinforced structure allows immediate occupancy after a seismic event
- Centrally located gym, commons and courtyard provide large venue for school and community events
- Features to highlight the building as a learning tool throughout



Front of school



Gym



Courtyard



Classroom

Fast Facts:

- Opened in September 2017 as the District's 6th comprehensive high school
- Architect: Bora Architects; General Contractor: Hoffman Construction Company
- 342,000 square foot building with 2,200 student capacity
- 53 general education classrooms, 5 special education classrooms, 11 science classrooms
- CTE programs for Engineering, Construction, Information & Technology, Culinary, Business & Marketing
- 47-acre lot with turf on all fields; 5-acre dedicated wetlands
- LED fixtures with dimmable controls in the building, stadium and parking lots
- Solar panels generate 172.5 kW
- Abundant natural light and constant fresh outside air
- Reinforced structure allows immediate occupancy after a seismic event



Auditorium



Courtyard



Commons



Aerial view looking southeast