

# Denton Independent School District

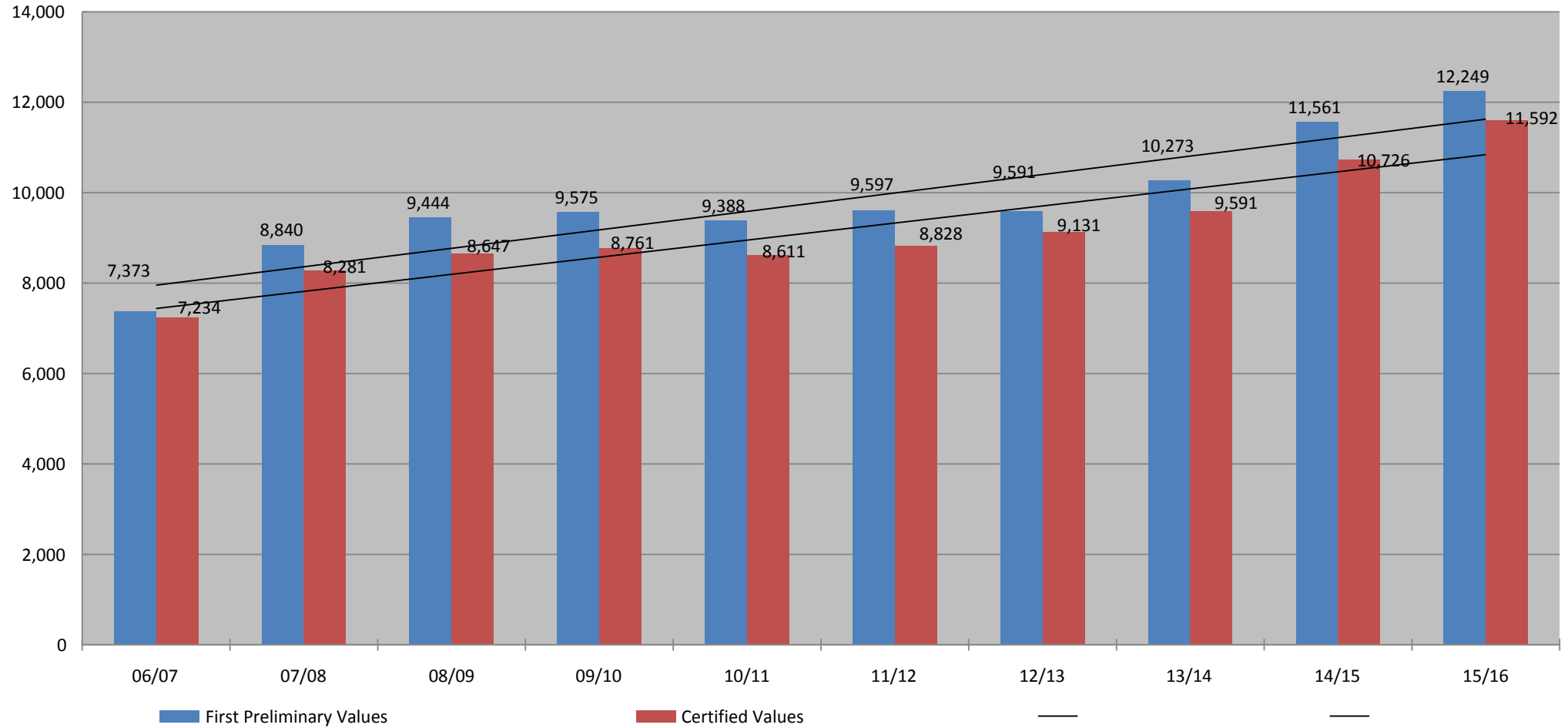
## Budget Discussions

Board of Trustee Meeting – March 8, 2016

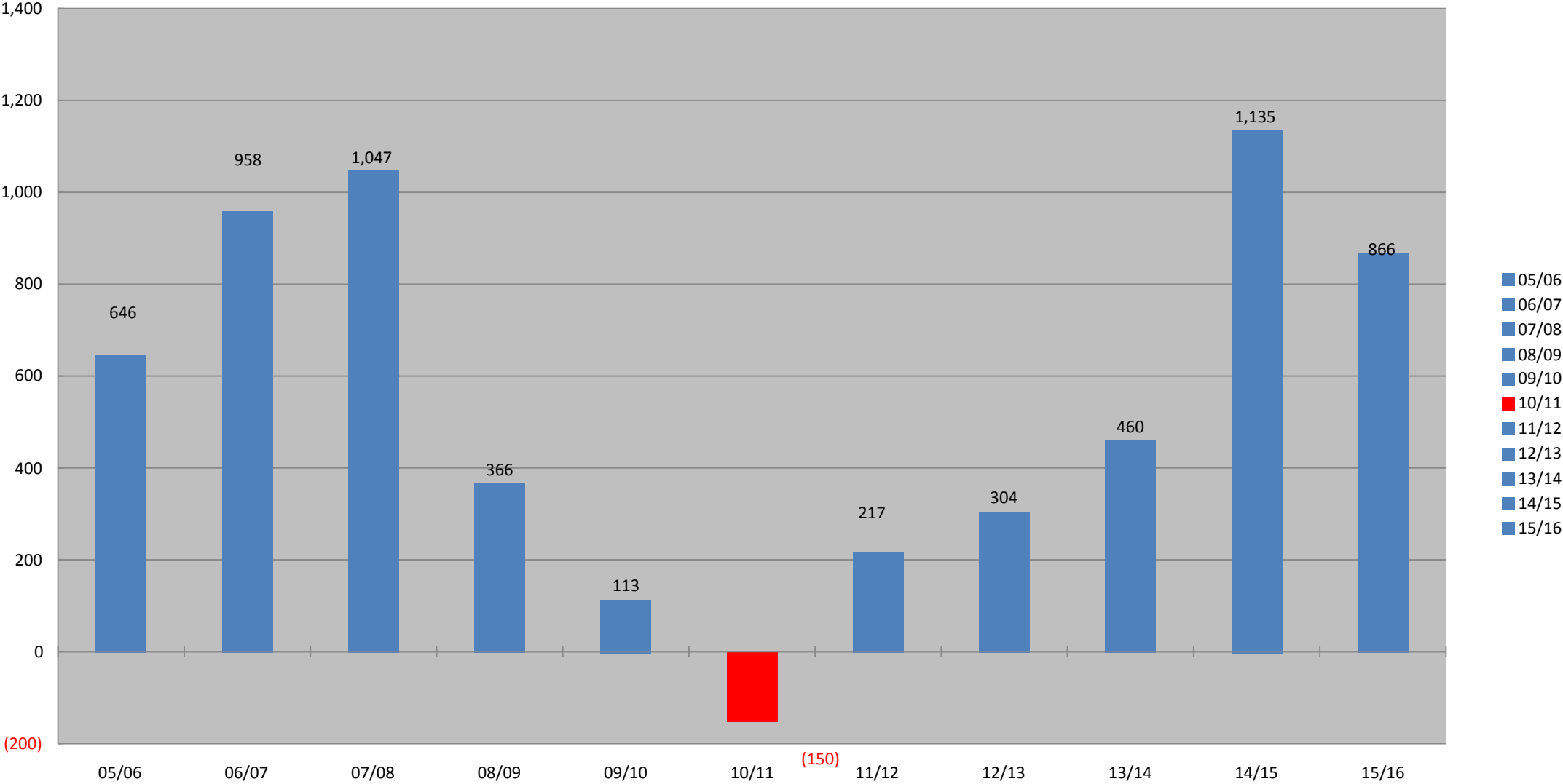
# Budget Discussions

- Property Values
- Tax Rates
- Revenues and Expenditures
- Enrollment and Average Daily Attendance

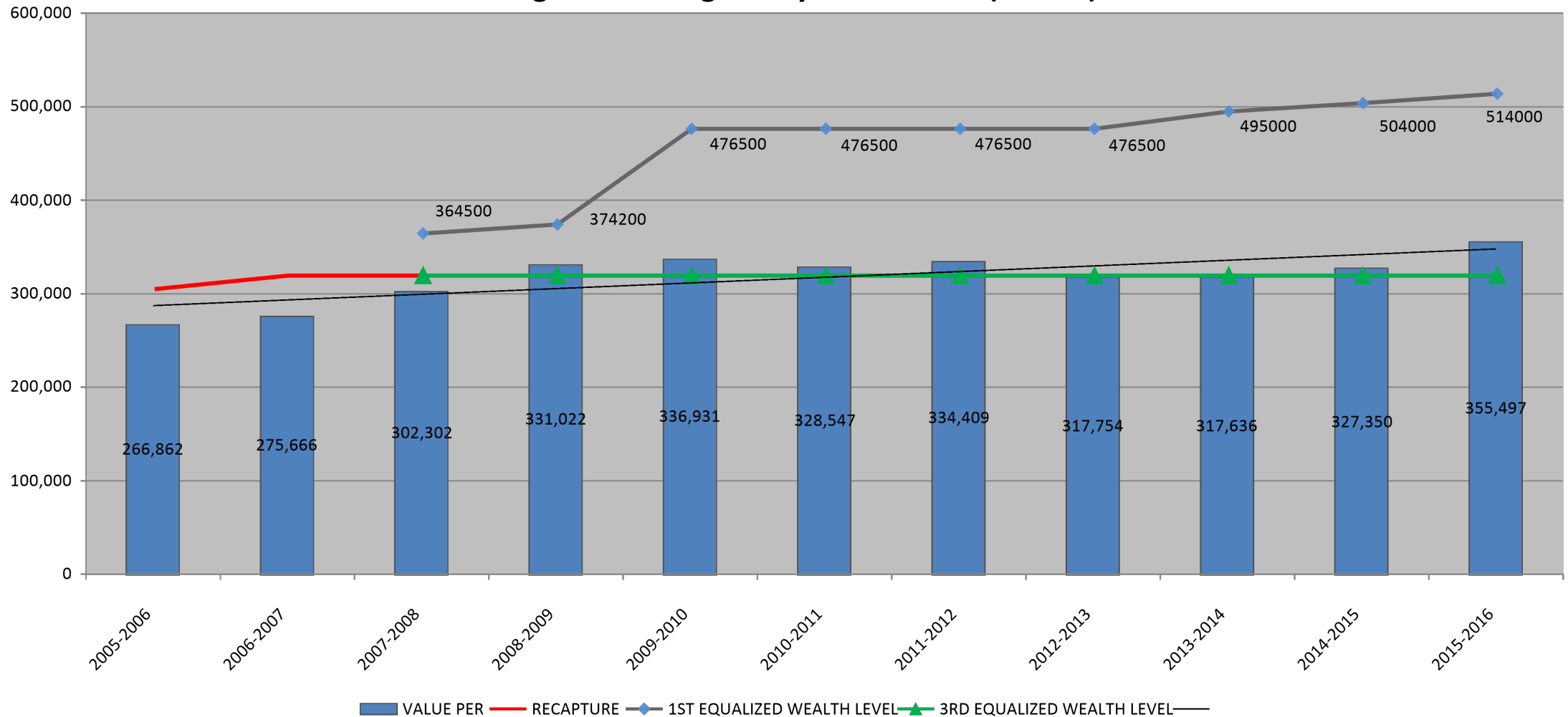
# Denton Independent School District Comparison of First Preliminary vs. Certified and Under Protest Property Values



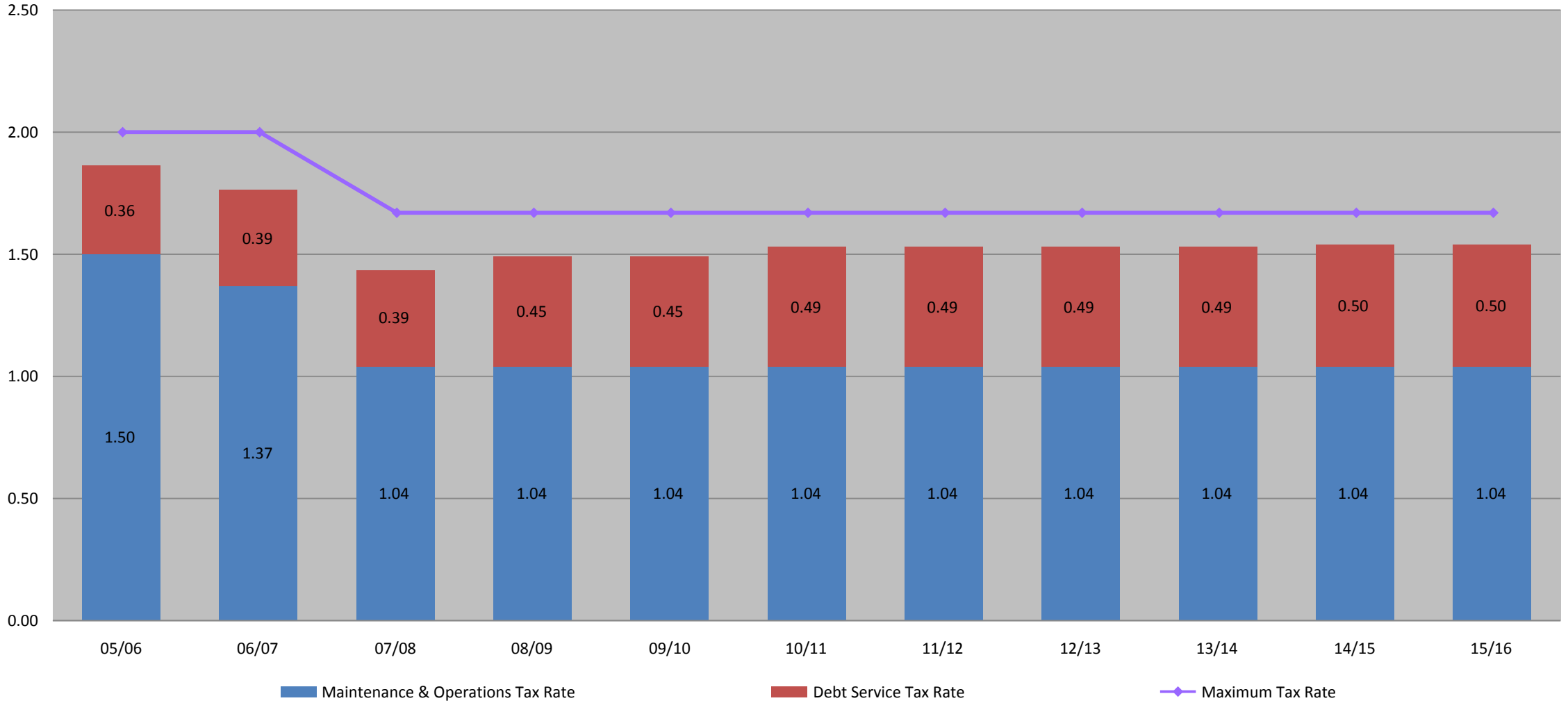
# Denton Independent School District Changes in Certified and Under Protest Property Values



## Denton Independent School District Prior Year Comptroller Property Tax Division Value (CPTD) per Weighted Average Daily Attendance (WADA)



### Denton Independent School District Schedule of Tax Rates







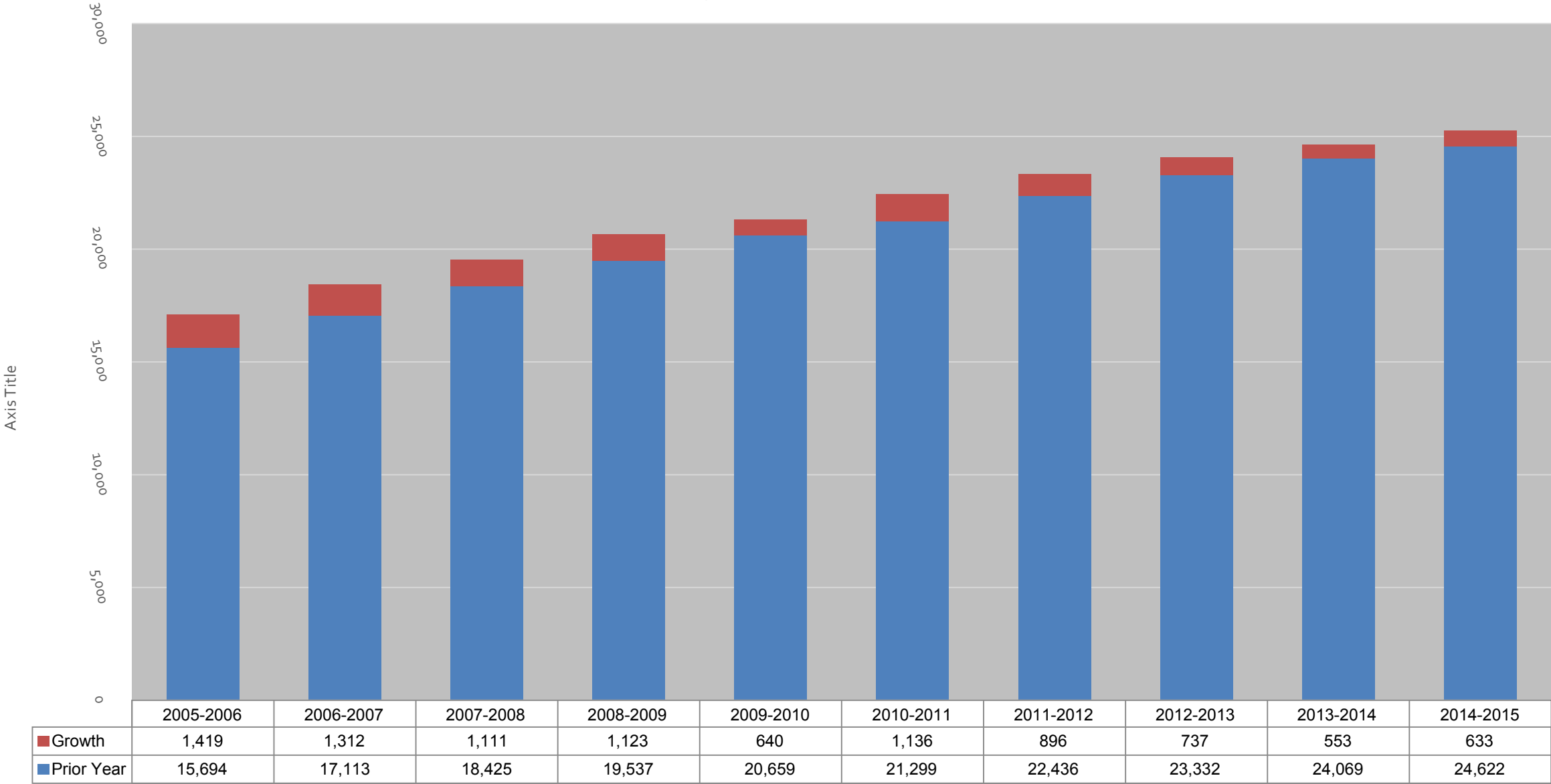




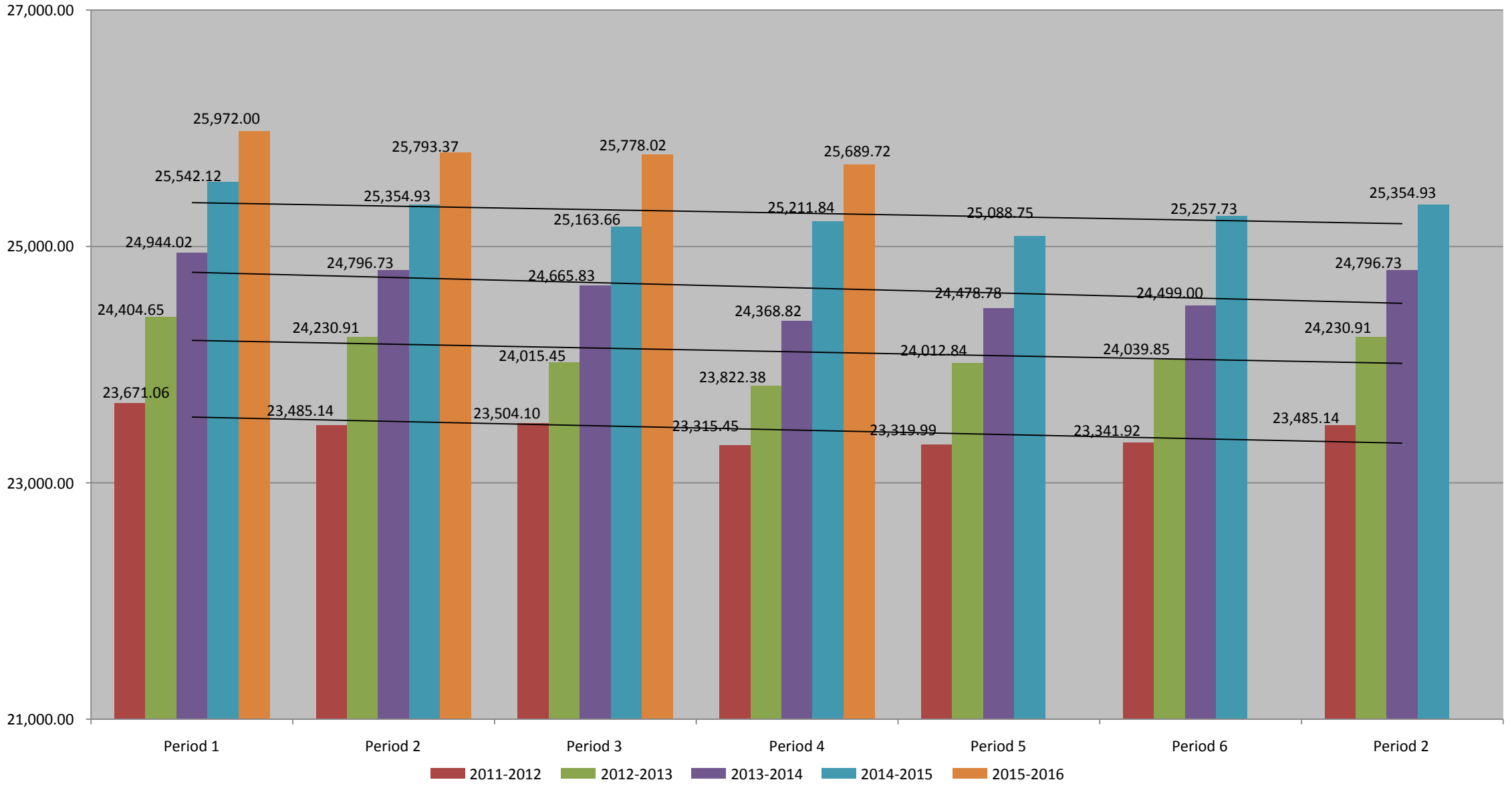




## Denton Independent School District Average Daily Attendance



## Denton Independent School District Average Daily Attendance Trends



# 2016-2017 Budget Assumptions

- Property Values – Growth of \$750,000,000
- Enrollment – 27,297
- Average Daily Attendance – 26,205 or 96%