

ENROLLMENT PROJECTION 2024-25

**Independent School District 877
Buffalo-Hanover-Montrose**

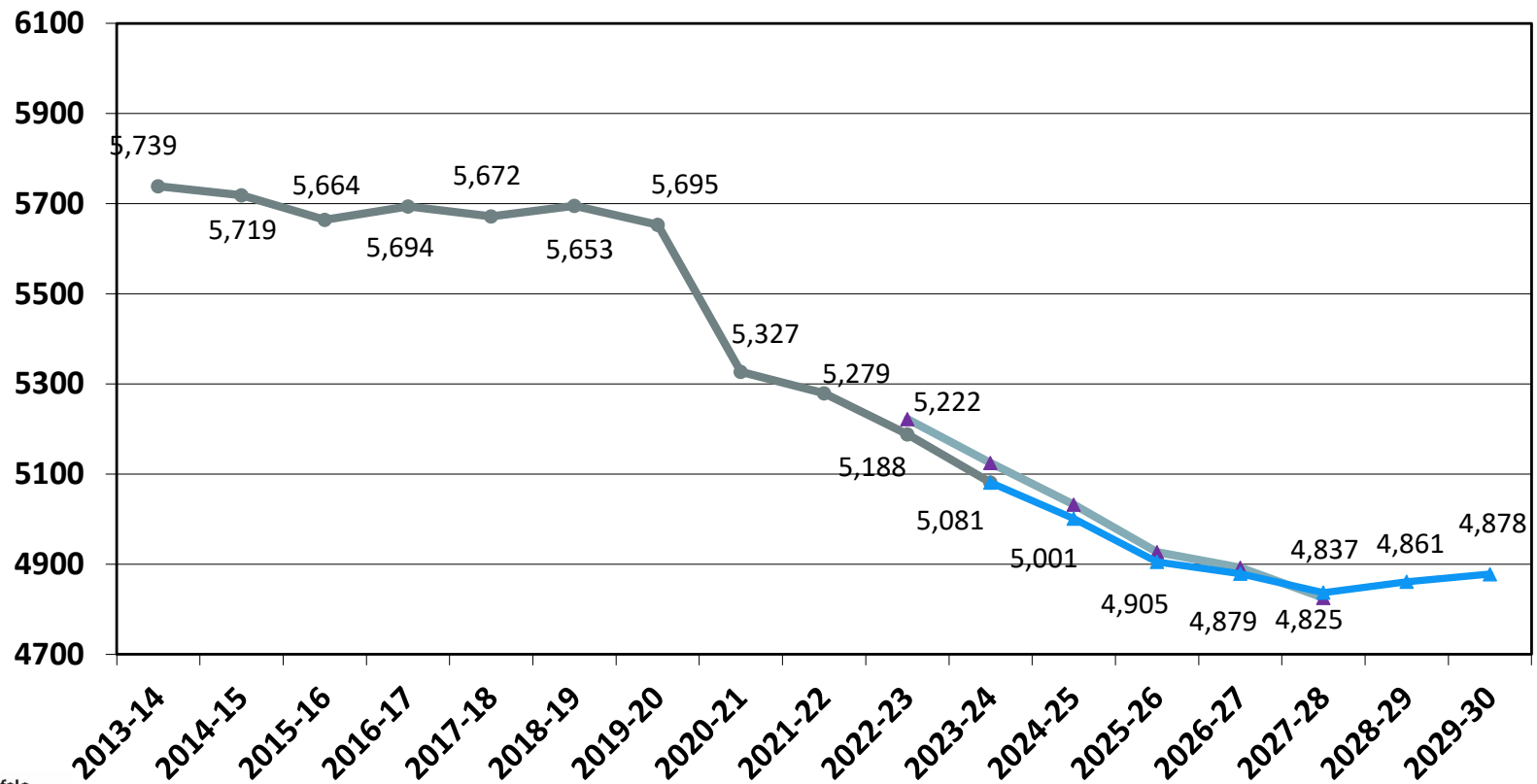


November 27, 2023

Enrollment Projection Report

- Review current year K-12 enrollment as of Oct. 1st
- Resident enrollment
- Open enrollment & tuition
- Nonpublic enrollment
- Fall vs. spring enrollment
- Review the 2023-24 enrollment projection
- Review the 2024-25 enrollment projection

Historical and 2023-24 Projected K-12 Enrollment as of Oct. 1st



Review of K-12 Enrollment as of Oct. 1st

- We are below last year's enrollment by 107 students.
- Enrollment of the past five years is declining, averaging -114.4 students per year.
- Total enrollment change over the past five years is -572 students or -10.12%.

	2019-20	2020-21	2021-22	2022-23	2023-24
K-12 enrollment	5,653	5,327	5,280	5,188	5,081
Change over prior year	-42	-326	-47	-92	-107
% change	-0.74%	-5.77%	-0.88%	-1.74%	-2.06%

Total Resident Students Enrolled in ISD 877 as of June 30th

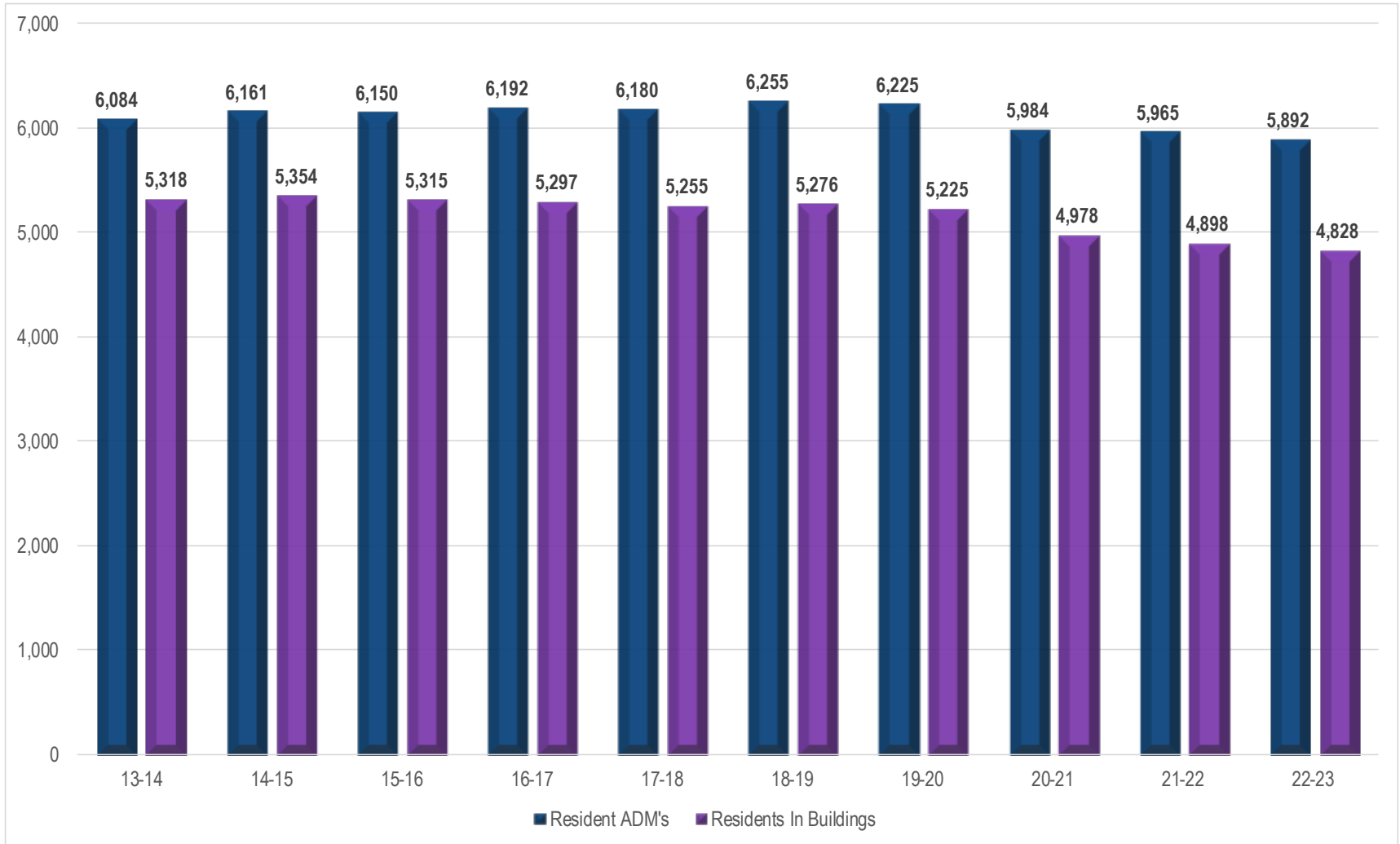
- BHM's resident population decreased and the residents served population also decreased this past year.

	2018-19	2019-20	2020-21	2021-22	2022-23
Resident Served	5,323	5,278	5,024	4,958	4,895
Residents going elsewhere	825	835	836	879	857
Charter Schools	91	100	111	110	123
Tuition Based	68	72	64	81	89
Total Residents	6,307	6,285	6,035	6,028	5,964
Change over prior year	66	-22	-250	-7	-64
%Change	1.08%	-0.35%	-3.98%	-0.12%	-1.06%
% Served vs. Total Population	84.40%	83.98%	83.25%	82.25%	82.08%

Buffalo-Hanover-Montrose Public School District

Resident ADM's vs. Resident Students Served in District Buildings

10 Year Student Enrollment Trend - K-12

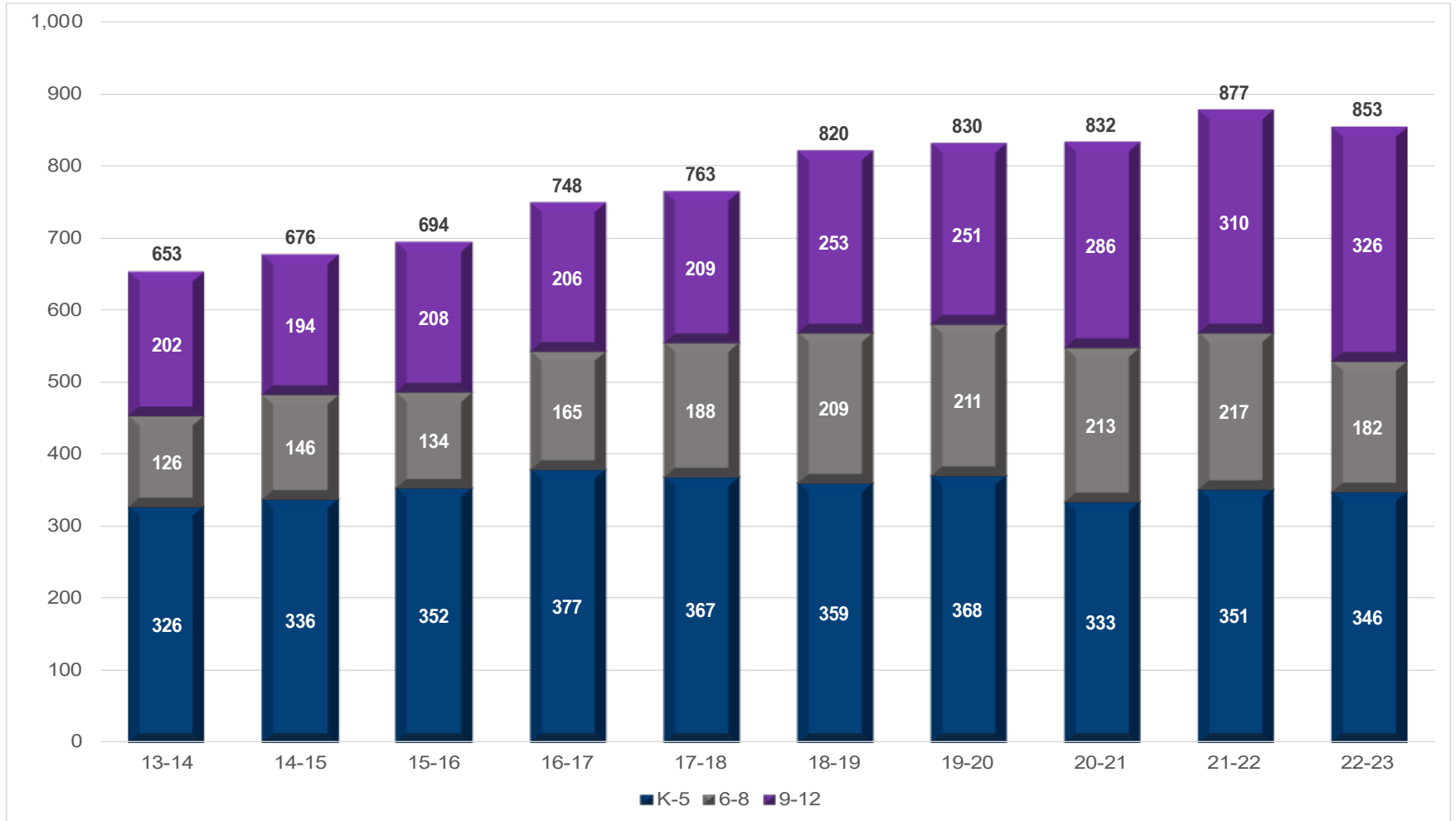


2022-23 Open Enrollment & Tuition Gain/Loss by District as of June 30th

District	In	Out	Net	Prior Year	Targeted Services, Tuition, and Charter/Online			
					School/District	22-23	21-22	Difference
Delano	5	160	-155	-168	Southwest Metro Educational Coop	-61	-55	-6
Rockford	37	172	-135	-134	Jane Goodall Environmental Science	-28	-30	2
St. Michael-Albertville	68	201	-133	-125	Minnesota Transitions	-27	-23	-4
Watertown-Mayer	1	74	-73	-62	Spectrum Charter High School	-17	-16	-1
Elk River	11	54	-43	-51	Wright Technical Center	-13	-12	-1
Osseo	2	21	-19	-16	Swan River Montessori	-10	-10	0
Orono	0	13	-13	-14	Houston	-4	-7	2
Anoka-Hennepin	3	4	-1	1	Parnassus School	-9	-7	-2
Foley	1	0	1	0	Bluesky Charter School	-11	-7	-3
Becker	3	1	2	2	Kaleidoscope School	-7	-7	0
Kimball	3	0	3	2	MAWSECO	-2	-4	2
Big Lake	7	2	5	2	Minnesota Online HS	-2	-4	2
Annandale	19	11	8	12	Eagle Ridge Academy	-2	-2	0
Monticello	46	33	13	7				
Howard Lake-W-W	56	38	18	16				
Maple Lake	57	35	22	23				

Buffalo-Hanover-Montrose Public School District

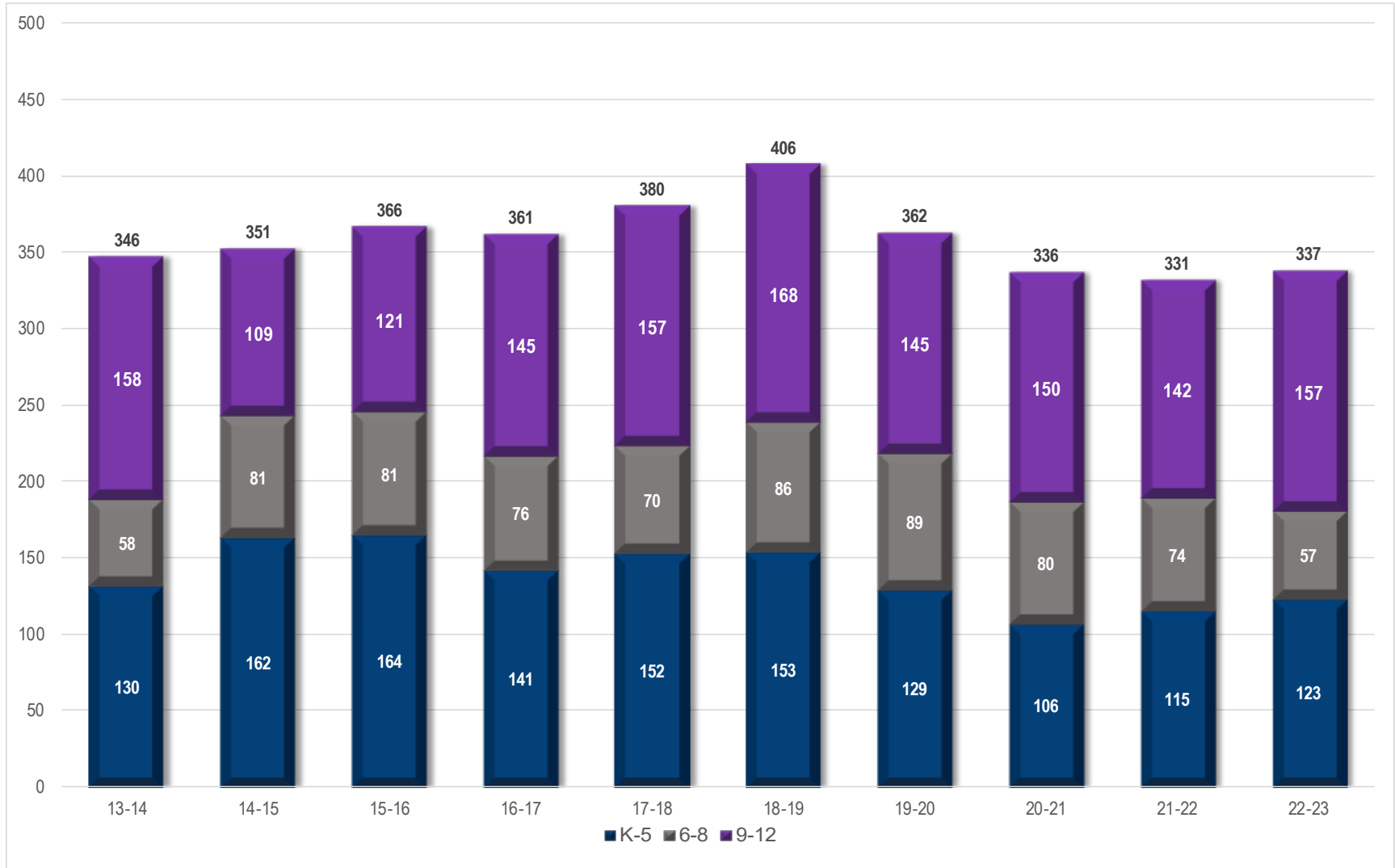
Resident Students Who Open Enroll in Another School District
10 Year Student Enrollment Trend - K-12



Buffalo-Hanover-Montrose Public School District

Students Open Enrolled From Another School District

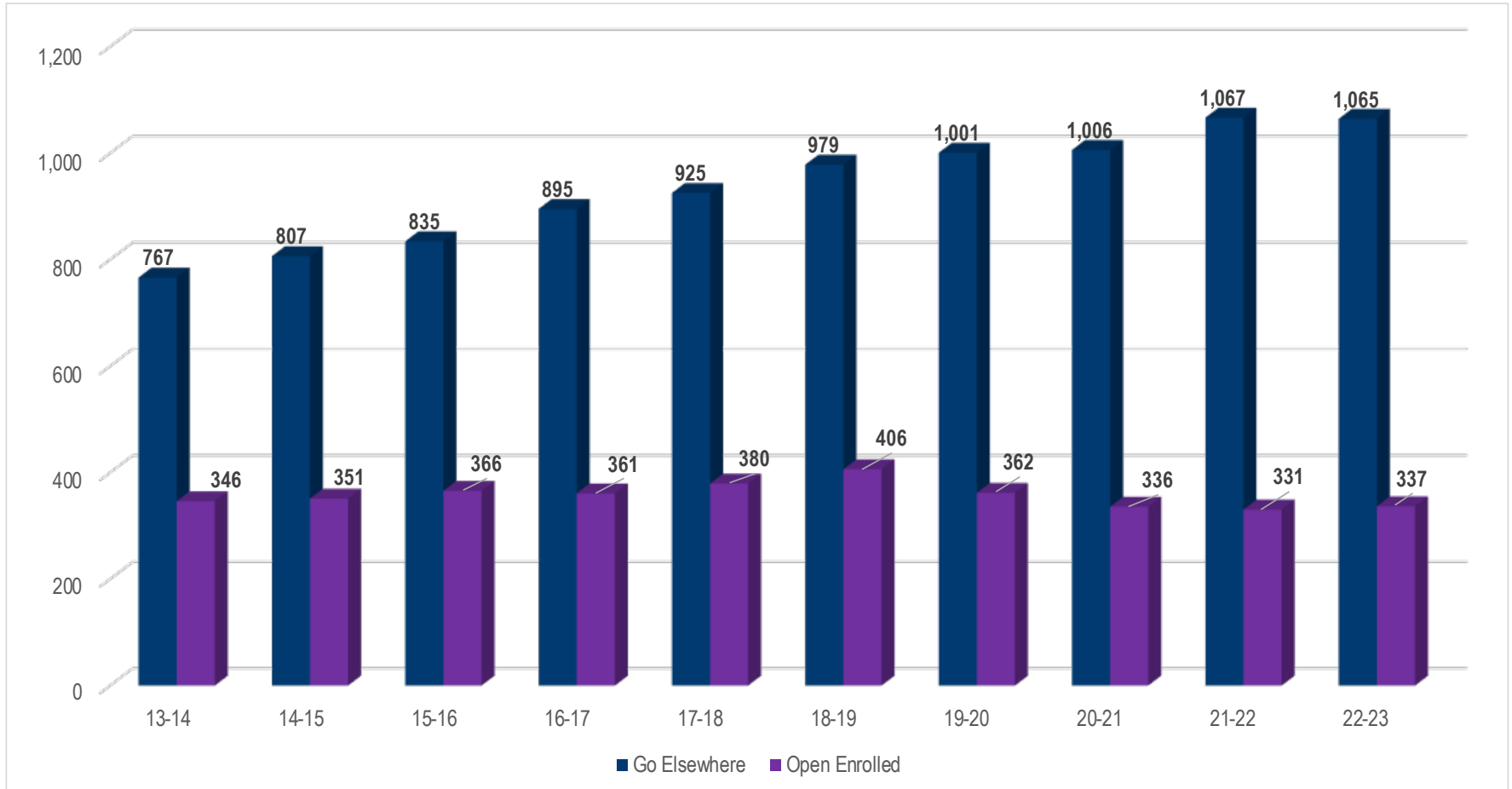
10 Year Student Enrollment Trend - K-12



Buffalo-Hanover-Montrose Public School District

Open Enrolled In Another District vs. Open Enrolled From Another District

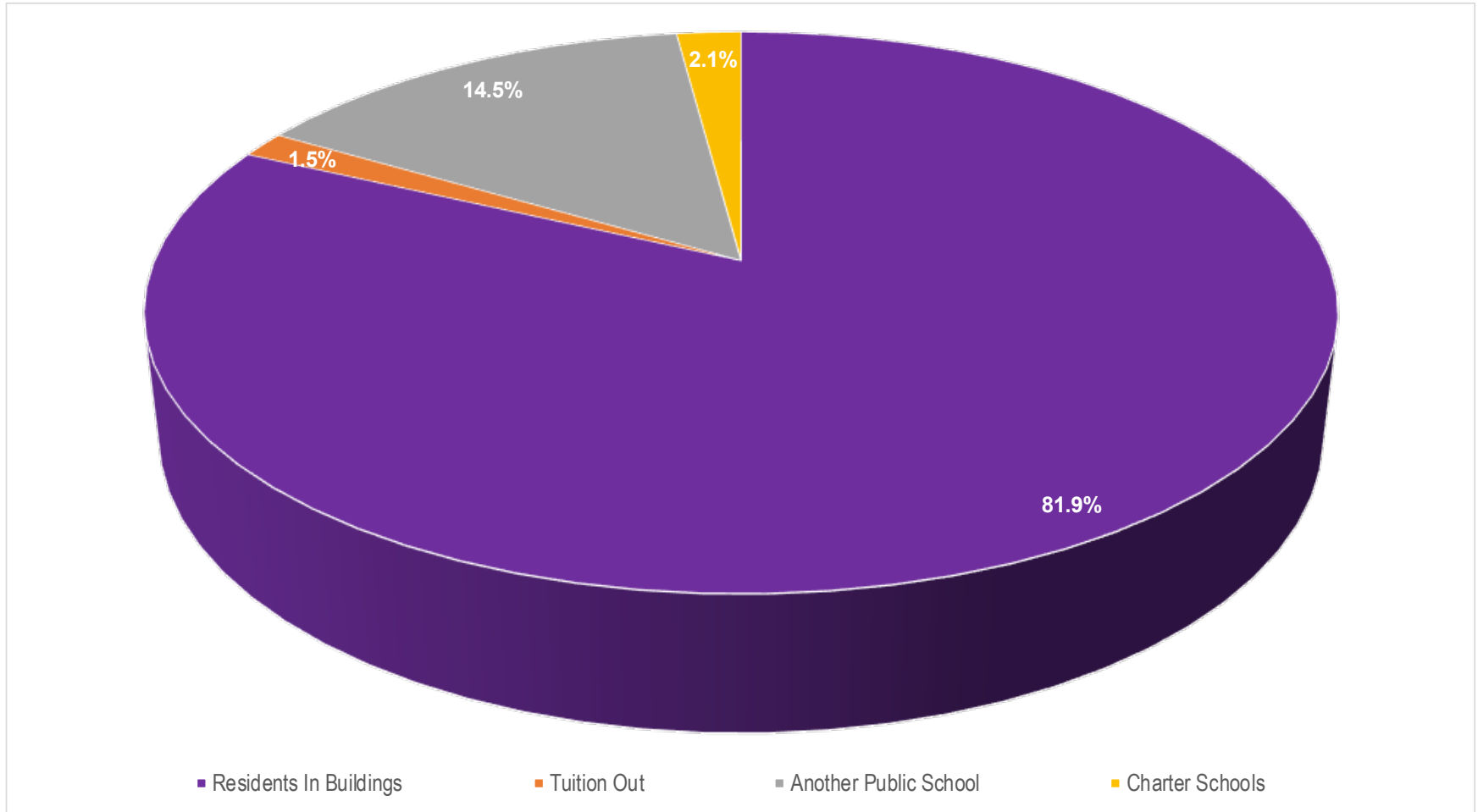
10 Year Student Enrollment Trend - K-12



Buffalo-Hanover-Montrose Public School District

Percentage of Where K-12 Resident ADM's are Served

School Year 2022-23



Nonpublic History

- Three nonpublic schools in the BHM district: St. Francis Xavier (K-8), Impact Christian Academy (K-9), and Salem Lutheran (K-8).

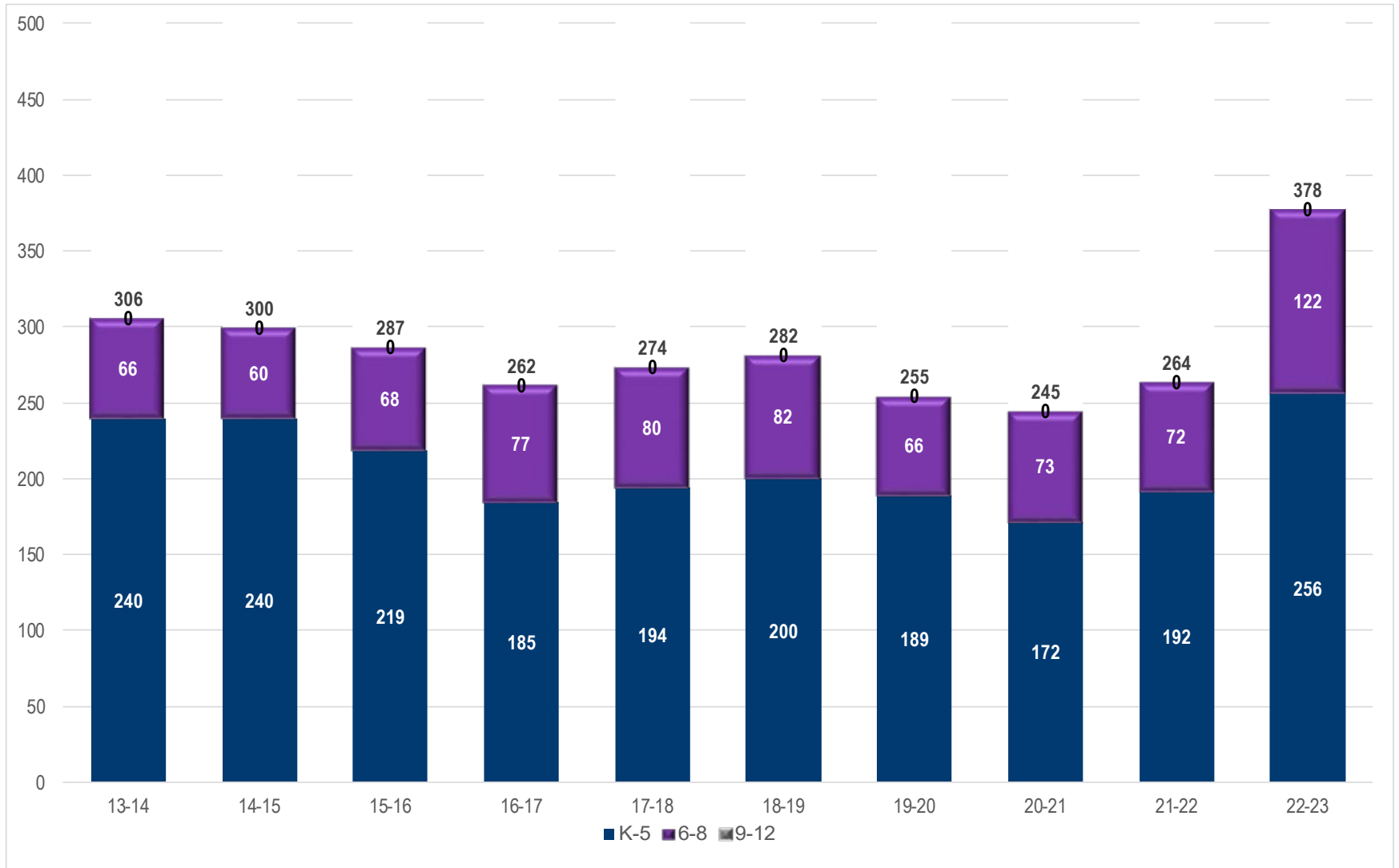
	13-14	14-15	15-16	16-17	17-18	18-19	19-20	20-21	21-22	22-23	23-24
Salem	86	88	84	89	91	87	74	65	77	78	73
St. Francis	220	212	205	173	176	176	181	180	156	217	247
ICA										83	107
Total	306	300	289	262	267	263	255	245	233	378	427
# Change	-6	-6	-11	-27	5	-4	-8	-10	-12	145	49
% Change	-1.92%	-1.96%	-3.67%	-9.34%	1.91%	-1.50%	-3.04%	-3.92%	-4.90%	62.23%	12.96%

Homeschool - October 1	2018	2019	2020	2021	2022	2023
K-12 enrollment	206	220	449	343	337	326
Change over prior year		14	229	-106	-6	-11
% change		6.80%	104.09%	-23.61%	-1.75%	-3.26%

Buffalo-Hanover-Montrose Public School District

Resident Students Attending a Non-Public School By Grade Level

10 Year Student Enrollment Trend - K-12



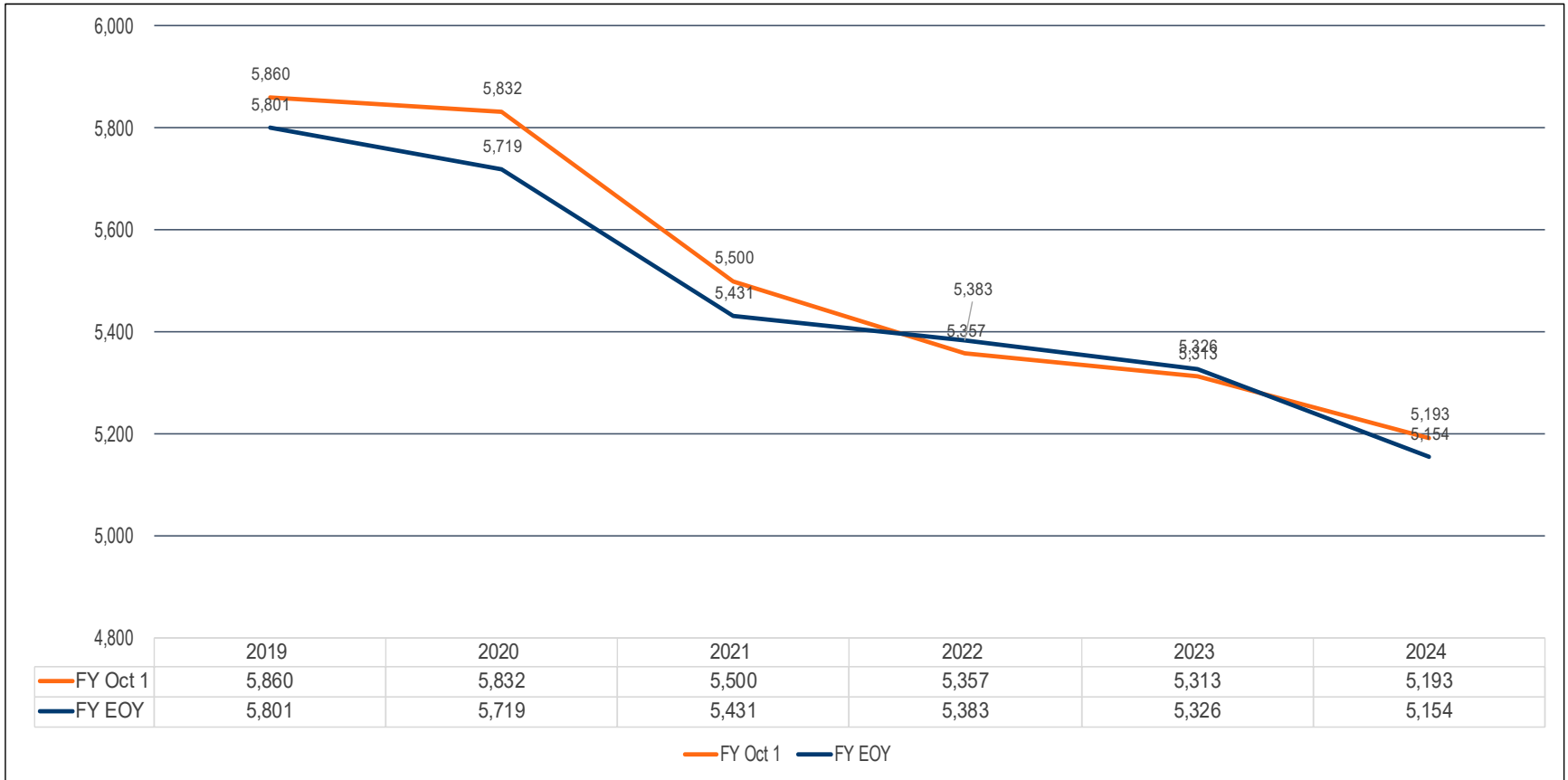
2022-23 Enrollment Fall vs. Spring

- Historically, K-12 enrollment decreases from October 1 to June 1.
- Most of the enrollment drops happen in grades 11 and 12.
- 2022-23 was similar to 2021-22 in that starting and ending student numbers were slightly higher than the fall enrollment.

	Oct. 1 st , 2022	Jun. 1 st , 2023	Net	Prior Year
K	320	339	19	-3
Gr. 1-5	1,875	1,896	21	78
Gr. 6-8	1,142	1,171	29	22
Gr. 9-12	1,851	1,847	-4	-22
Total	5,188	5,253	65	75

Buffalo-Hanover-Montrose Public School District

October 1 vs. End of the Year ADM Enrollment

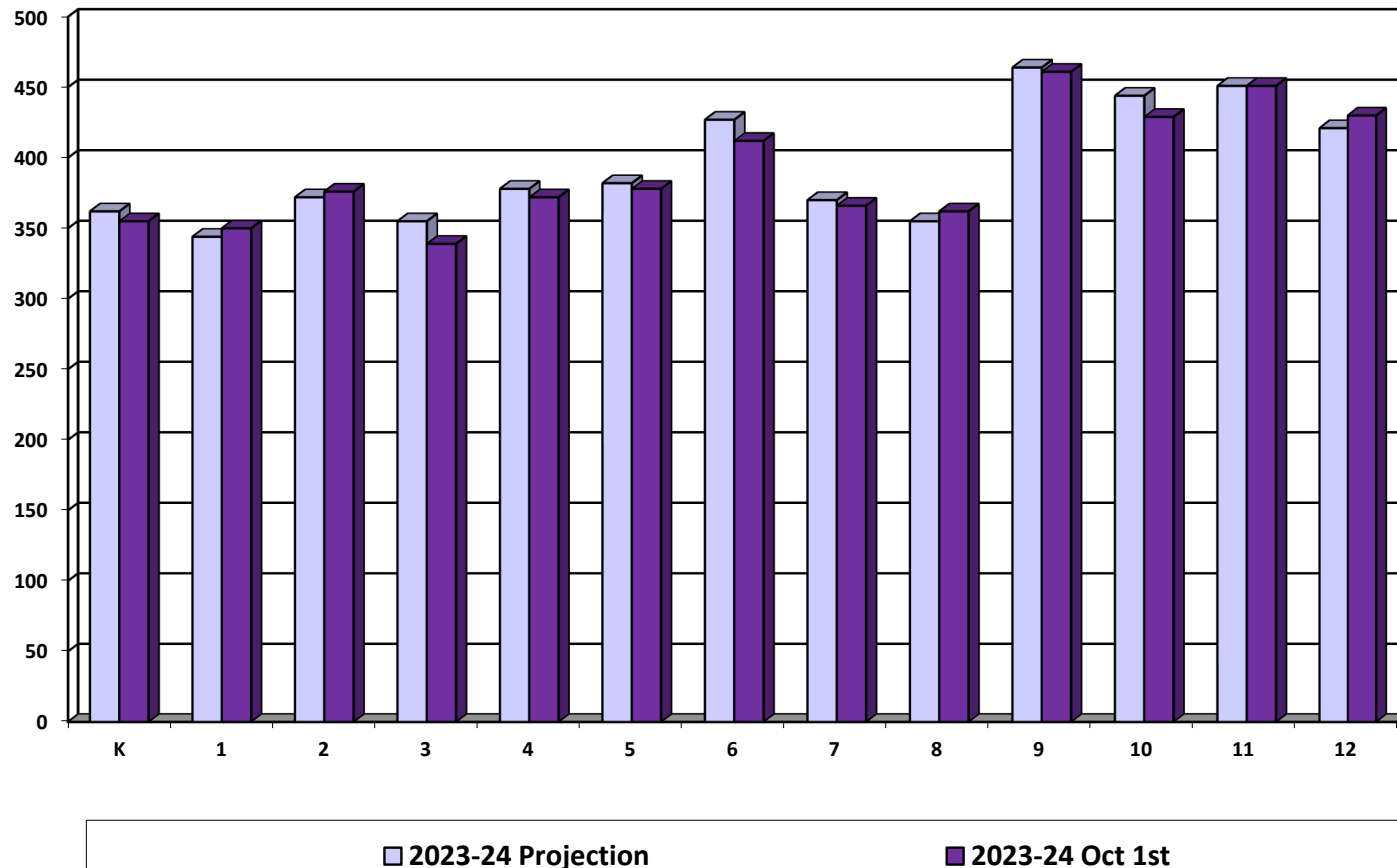


Review of 2023-24 Enrollment Projection

- Last year’s enrollment projection was overestimated by 44 students.
- Our internal monthly enrollment reports adjust down post-secondary and shared time students.
- The official Oct. 1st MARSS submission by MDE will report a higher enrollment with post-secondary and shared-time students.

	2023-24 Projection	2023-24 Oct. 1 st	Difference
K	362	355	-7
Gr. 1-5	1,831	1,815	-16
Gr. 6-8	1,152	1,140	-12
Gr. 9-12	1,780	1,771	-9
Total	5,125	5,081	-44

Review of 2023-24 Enrollment Projection by Grade



Enrollment Projection Data

Enrollment Projection Data

- The district uses a combination of results from multiple enrollment projection models.
- The models allow schools to develop enrollment projections based on three different sets of data:
 - **October 1st MARSS submission**
 - **End of Year ADM** is generally used for financial forecast
 - **District Data** allows schools to enter enrollment history taken at any time, resident ADM, or any other historical data by grade

Kindergarten Projection Methods

- **Hold Constant** maintains the 2023-24 kindergarten level.
- **Linear Projection** is a straightforward mathematical projection based on nothing more than the past five years of data.
- **County Birth Method** uses the total number of live births in Wright County and examines what percentage of those births enroll in kindergarten. The projection is based on the average percentage of the last four years.
- **District-Determined Method** examines county birth rates in Wright County and compares that to actual student enrollment numbers in the District and projects that percentage for the next five years.

Kindergarten Projection Methods

- Using Oct. 1st district data

	19-20	20-21	21-22	22-23	23-24	24-25	25-26	26-27	27-28	28-29
Actual enrollment	400	343	362	320	355					
Hold constant						355	355	355	355	355
Linear projection						322	311	299	288	277
Wright Co. Avg. births						332	333	353	362	362
District Determined Method						341	342	363	372	371

Kindergarten Projection Methods

Birth Year	Kdgn Enroll Year	Wright Co. Births	Actual Kdgn Enrollment	% of Wright Co. Births Enrolled
2011	2016	1,855	358	19.3%
2012	2017	1,829	413	22.6%
2013	2018	1,784	391	21.9%
2014	2019	1,791	400	22.9%
2015	2020	1,768	343	19.4%
2016	2021	1,785	363	20.3%
2017	2022	1,808	320	17.7%
2018	2023	1,767	355	20.9%
2019	2024	1,687	341*	19.9*
2020	2025	1,734	342*	19.9*
2021	2026	1,865	363*	19.9*
2022	2027	1,871	372*	19.9*

* Projected K enrollment based on County births-5-year average

Enrollment Projection Methods

- After the kindergarten enrollment projection is complete, the overall K-12 enrollment is determined by a variety of methods:
 - Cohort Survival Method
 - Weighted Cohort Survival Method
 - Numerical Survival Method
 - Weighted Numerical Survival Method
 - Merged Method

Projection Methods Comparison

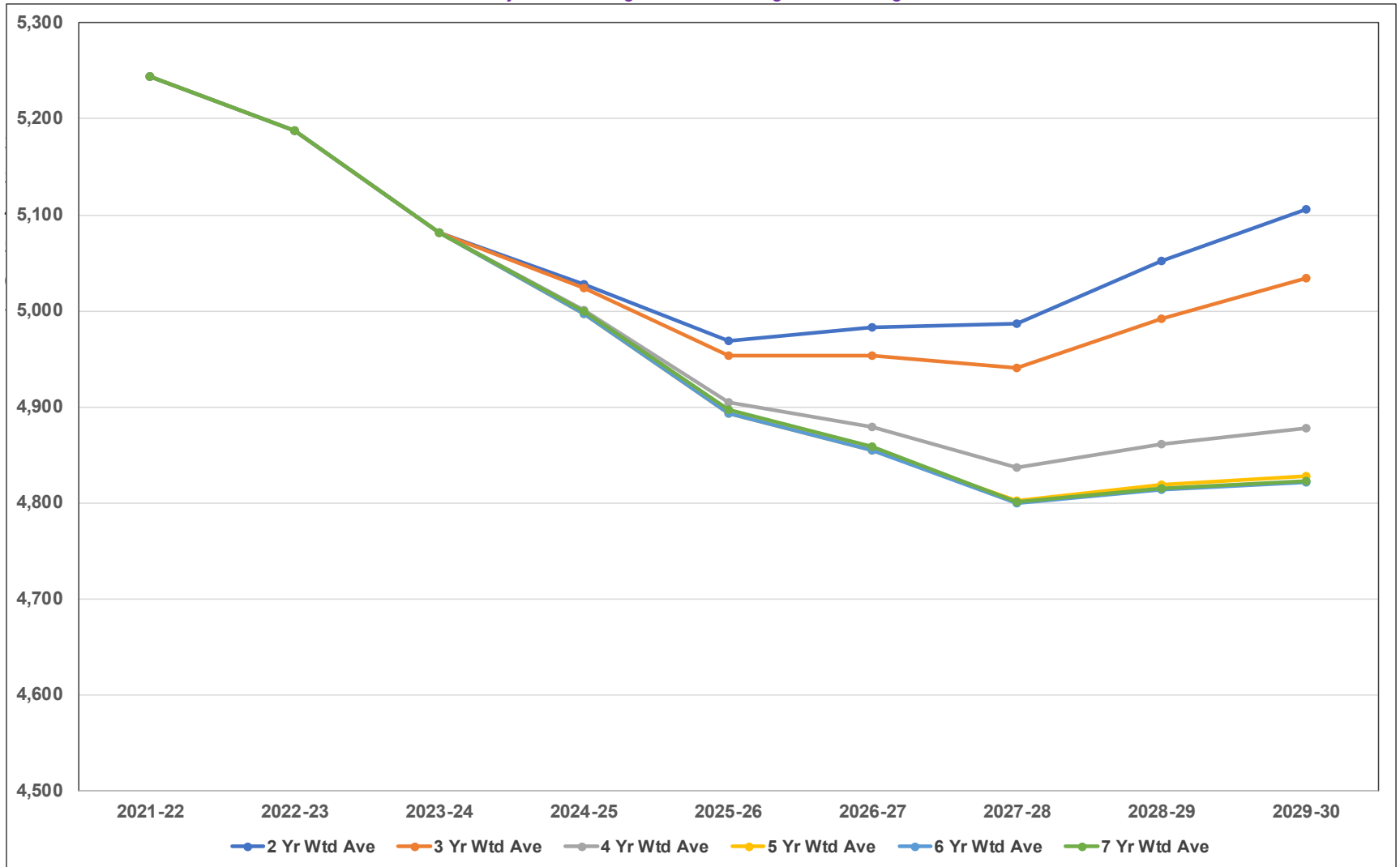
- Using Oct. 1st district data, eighteen different variations were examined.
- The following five were selected for detailed analysis:

	23-24	24-25	25-26	26-27	27-28	28-29
Wt Ratio 2 Years	5,081	5,028	4,969	4,983	4,986	5,052
Wt Ratio 3 Years	5,081	5,023	4,954	4,954	4,941	4,992
Wt Ratio 4 Years	5,081	5,001	4,905	4,879	4,837	4,861
Wt Ratio 5 Years	5,081	4,997	4,893	4,855	4,802	4,819
Wt Ratio 6 Years	5,081	4,997	4,894	4,855	4,800	4,814
Wt Ratio 7 Years	5,081	5,001	4,897	4,858	4,802	4,815
Max Difference		-31	-76	-128	-186	-238

Buffalo-Hanover-Montrose Public School District

Kindergarten to Grade 12 Enrollment Projection Analysis

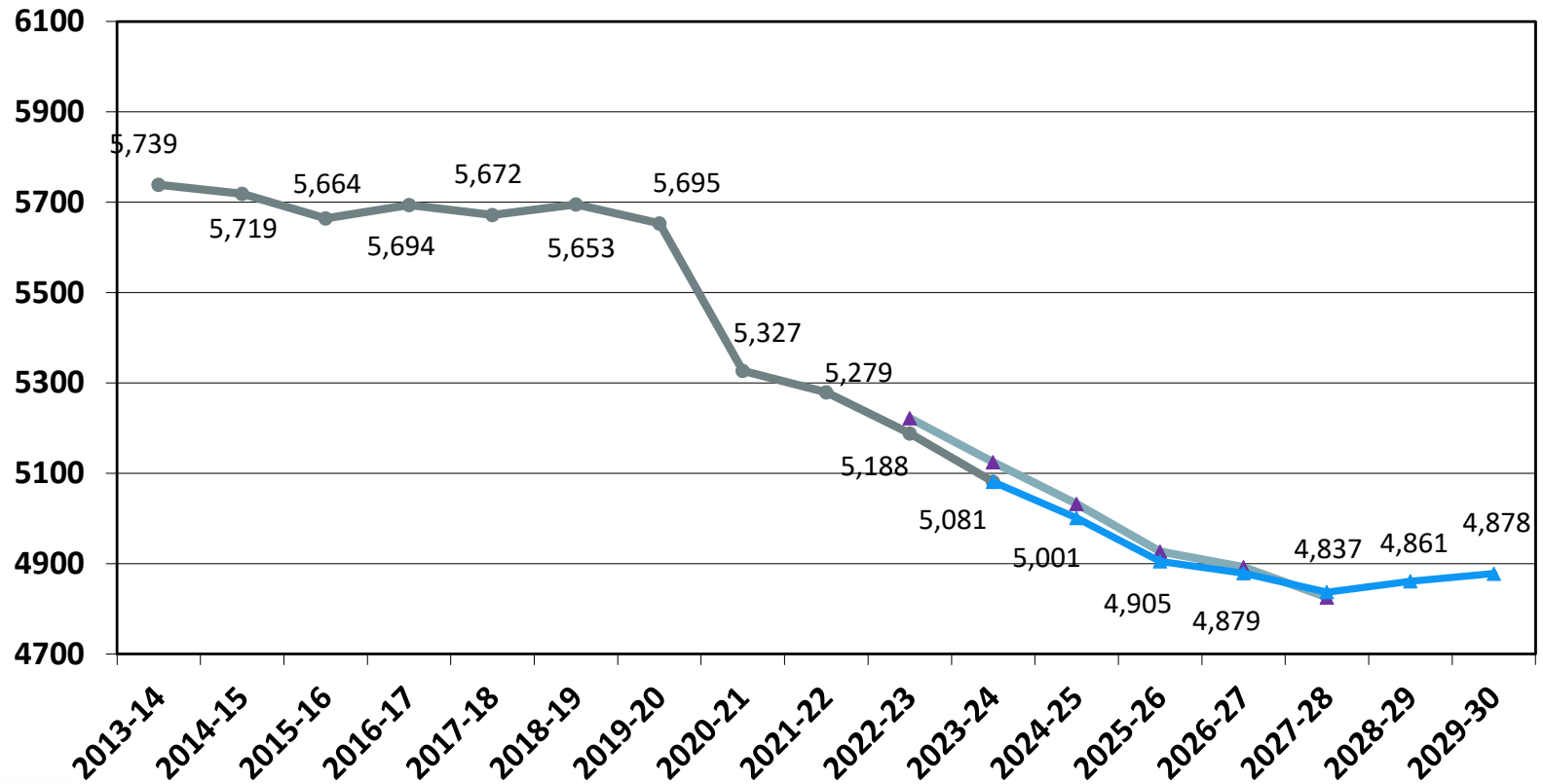
Projection Using 2-7 Year Weighted Averages



2024-25 Enrollment Projection

- Factors considered: housing market, economic conditions, Wright County births, and open enrollment.
 - Building permits by city:
 - Buffalo - 84 building permits issued during 2023 compared to 29 in 2022
 - Hanover - 71 building permits issued during 2023 compared to 70 in 2022
 - Montrose - 3 building permits issued during 2023 compared to 0 in 2022
- 5-year weighted kindergarten attendance average 19.2%
- Weighted ratio 4 years
- K-12 Enrollment 5,001
- Decrease of 80 students or 1.6% from the 2023-24 revised projection

Historical and Projected K-12 Enrollment



2024-25 Enrollment Projection by Grade Groupings

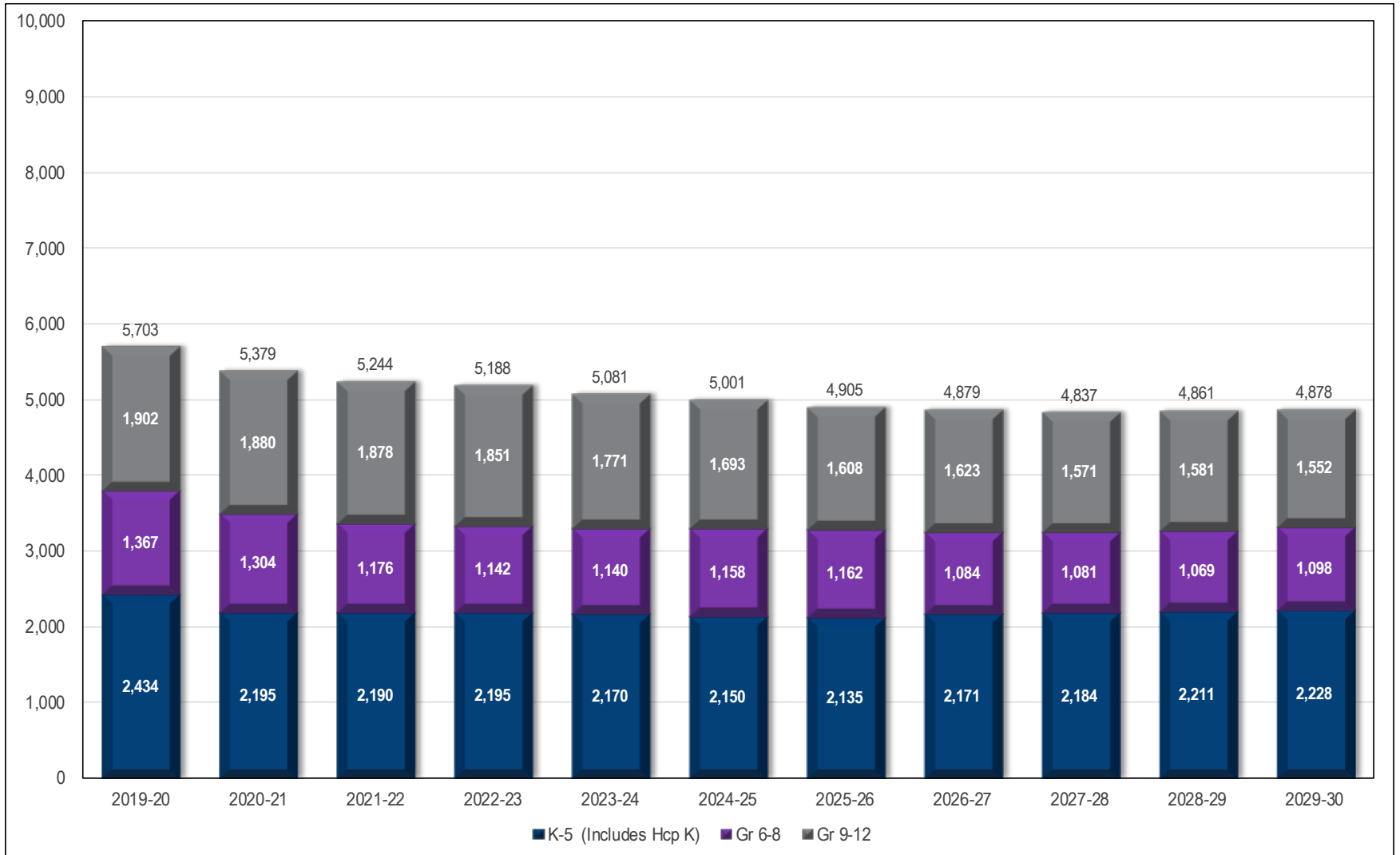
- With future enrollments, we need to consider building capacity:
 - BHS – 2,010
 - BCMS – 1,425
 - Elementary – 3,350

	2022-23	2023-24	2024-25	2025-26	2026-27	2027-28	2028-29
K	339	355	341	342	363	372	371
Gr. 1-5	1,896	1,815	1,808	1,794	1,808	1,812	1,840
Gr. 6-8	1,172	1,140	1,158	1,162	1,084	1,082	1,069
Gr. 9-12	1,846	1,771	1,694	1,607	1,624	1,571	1,581
Total	5,253	5,081	5,001	4,905	4,879	4,837	4,861
	-74	-172	-80	-96	-26	-42	24
	-1.30%	-3.27%	-1.57%	-1.92%	-0.53%	-0.86%	0.50%

Buffalo-Hanover-Montrose Public School District

Projection Based on 4 Year Weighted Average

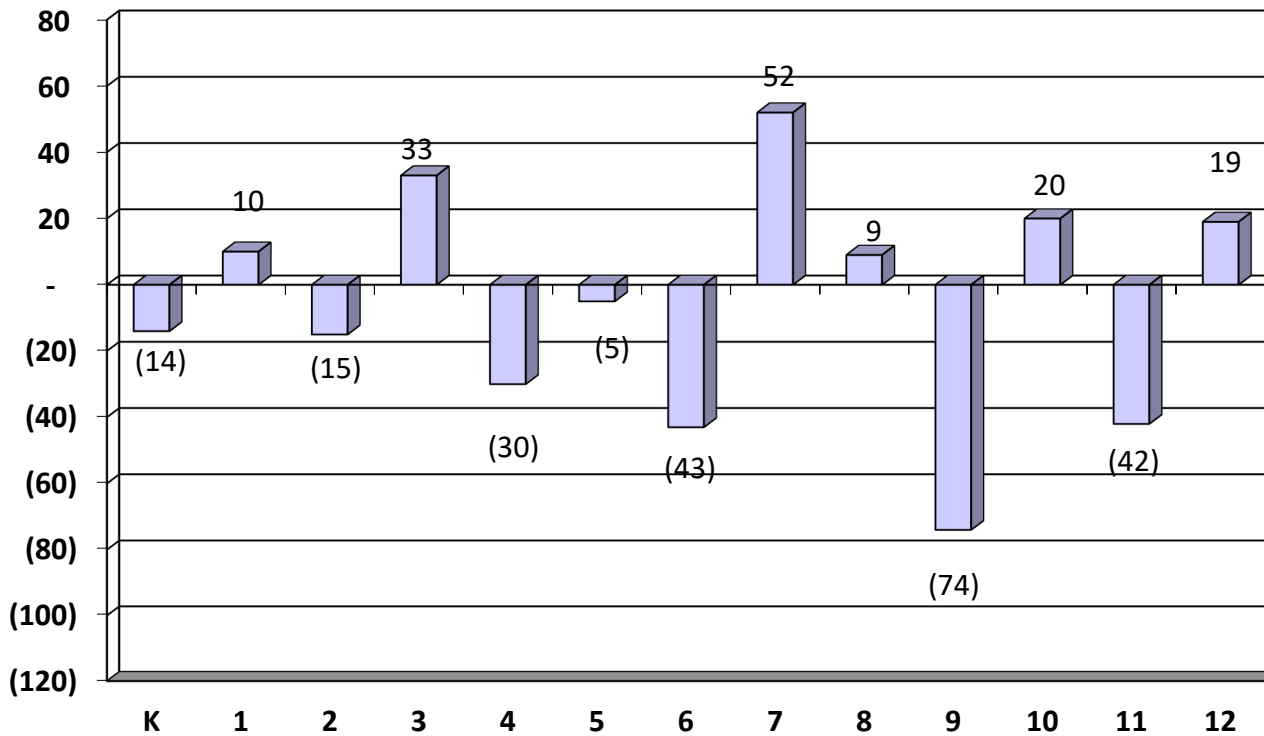
Six Year Projection by Grade Category



Enrollment Projection by Grade

	2023-24	2024-25	2025-26	2026-27	2027-28	2028-29
K	355	341	342	363	372	371
1	350	360	347	347	368	378
2	376	361	372	357	358	380
3	339	372	357	368	354	354
4	372	342	375	360	371	356
5	378	373	343	376	361	372
6	412	369	364	335	367	353
7	366	418	374	369	340	372
8	362	371	424	380	375	344
9	461	387	396	452	405	400
10	429	449	377	387	441	395
11	451	409	428	359	368	420
12	430	449	406	426	357	366
Total	5,081	5,001	4,905	4,879	4,837	4,861

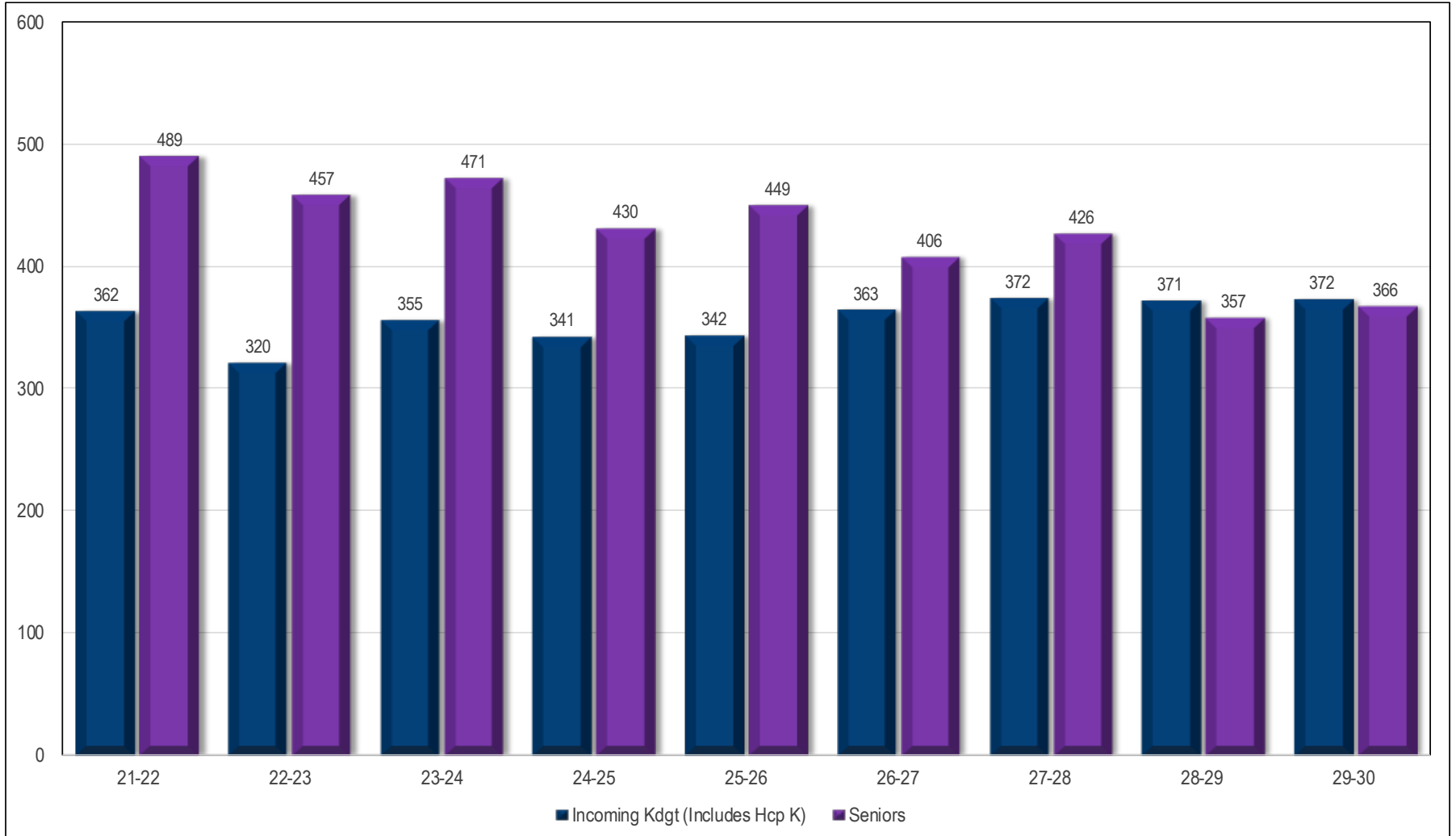
2024-25 Enrollment Change by Grade



Buffalo-Hanover-Montrose Public School District

Projection Based on 4 Year Weighted Average

Migration Kindergarten to Grade 12



APU Report

- The Adjusted Pupil Units (APU) projection shows a decline in student aid.
- Keep in mind the district's enrollment history also tends to decline from Oct. 1st to June 1st.

	2023-24		2024-25		2025-26		2026-27		2027-28	
	Enroll	APU	Enroll	APU	Enroll	APU	Enroll	APU	Enroll	APU
K	355	355	341	341	342	342	363	363	372	372
Gr. 1-3	1,065	1,065	1,093	1,093	1,076	1,076	1,072	1,072	1,080	1,080
Gr. 4-6	1,162	1,162	1,084	1,084	1,082	1,082	1,071	1,071	1,099	1,099
Gr. 7-8	728	874	789	947	798	958	749	899	715	858
Gr. 9-12	1,771	2,125	1,694	2,033	1,607	1,928	1,624	1,949	1,571	1,885
ECSE	56	56	58	58	59	59	62	62	64	64
MCPU		73		23		31		8		16
Total	5,137	5,710	5,059	5,579	4,964	5,476	4,941	5,424	4,901	5,374

Conclusion

- Recent birth rates have returned to pre-pandemic levels.
- BHM's enrollment is projected to decline through the school year 2027-28 but will start to increase in the following years.

2024-25 5,001