

ENROLLMENT PROJECTION 2026-27

**Independent School District 877
Buffalo-Hanover-Montrose**



November 24, 2025

Enrollment Projection Report

- Review School Year 2024-25
- Nonpublic enrollment
- Review School Year 2025-26 K-12 Oct 1 enrollment
- Present the 2026-27 enrollment projection

2024-25 Enrollment Fall vs. Spring

- Historically, K-12 enrollment decreases from October 1 to June 1.
- Most of the enrollment drops happen in grades 11 and 12.
- 2024-25 was similar to prior years in that the fall student enrollment was higher than the spring enrollment.

	Oct. 1st, 2024	Jun. 1st, 2025	Net	Prior Year
K	356	356	0	-9
Gr. 1-5	1,776	1,763	-13	-17
Gr. 6-8	1,160	1,159	-1	-9
Gr. 9-12	1,672	1,634	-38	-37
Total	4,964	4,912	-52	-72

Total Resident Students Enrolled in ISD 877 as of June 30th

- BHM's resident population decreased and the residents served population also decreased this past year.

	2020-21	2021-22	2022-23	2023-24	2024-25
Resident Served	5,024	4,967	4,921	4,756	4,673
Residents Going Elsewhere	836	879	857	887	933
Charter Schools	111	113	123	122	102
Tuition Based	64	82	89	77	86
Total Residents	6,035	6,041	5,990	5,842	5,794
Change Over Prior Year	-250	6	-51	-148	-48
% Change	-3.98%	0.10%	-0.84%	-2.47%	-0.82%
% Served vs. Total Population	83.25%	82.22%	82.15%	81.41%	80.65%

Nonpublic History

- Three nonpublic schools in the BHM district: Salem Lutheran (K-8), St. Francis Xavier (K-8), and Impact Christian Academy (K-9).

	16-17	17-18	18-19	19-20	20-21	21-22	22-23	23-24	24-25	25-26
Salem	89	91	87	74	65	77	78	73	85	74
St. Francis	173	176	176	181	180	156	217	247	291	297
ICA							83	107	61	61
Total	262	267	263	255	245	233	378	427	437	432
# Change	-27	5	-4	-8	-10	-12	145	49	10	-5
% Change	-9.34%	1.91%	-1.50%	-3.04%	-3.92%	-4.90%	62.23%	12.96%	2.34%	-1.14%

Homeschool - October 1	2018	2019	2020	2021	2022	2023	2024	2025
K-12 enrollment	206	220	449	343	337	326	341	366
Change over prior year		14	229	-106	-6	-11	15	25
% change		6.80%	104.09%	-23.61%	-1.75%	-3.26%	4.60%	7.33%

Review of 2025-26 Enrollment Projection

- Last year's enrollment projection was underestimated by 53 students.
- Our internal monthly enrollment reports adjust down post-secondary and shared time students.
- The official Oct. 1st MARSS submission by MDE will report a higher enrollment with post-secondary and shared-time students.

	2025-26 Projection	2025-26	Difference
		Oct. 1st	
K	344	326	-18
Gr. 1-5	1,773	1,805	32
Gr. 6-8	1,160	1,167	7
Gr. 9-12	1,569	1,601	32
Total	4,846	4,899	53

2026-27 Kindergarten Projection

- Hold Constant
- Linear Projection
- County Birth Method
- District-Determined Method

	22-23	23-24	24-25	25-26	26-27	27-28	28-29	29-30	30-31
Actual Enrollment	342	355	356	326					
Hold Constant					326	326	326	326	326
Four Year Linear Projection					333	328	324	319	314
Wright Co. Avg. Births (4 yr)					359	369	373	378	381
District Determined Method					359	369	373	378	381

Enrollment Projection Methods

- After the kindergarten enrollment projection is complete, the overall K-12 enrollment is determined by a variety of methods:
 - Cohort Survival Method
 - Weighted Cohort Survival Method
 - Numeric Survival Method
 - Weighted Numeric Survival Method
 - Merged Method

Projection Comparison

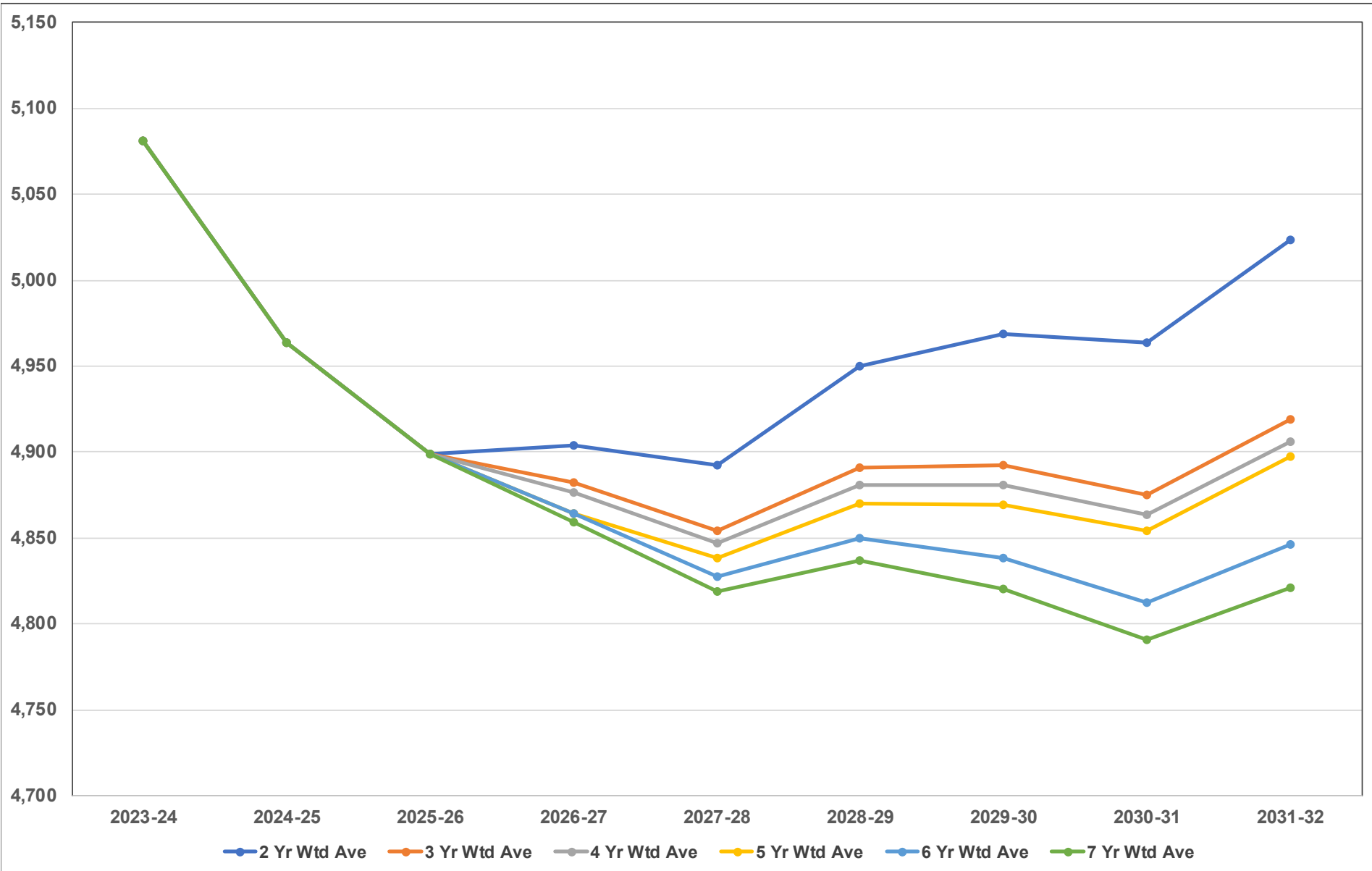
- Using Oct. 1st district data, eighteen different variations were examined.
- The Weighted Cohort Survival Method was selected for the projection:

	25-26	26-27	27-28	28-29	29-30	30-31
Wt Ratio 2 Years	4,899	4,904	4,894	4,952	4,967	4,963
Wt Ratio 3 Years	4,899	4,884	4,854	4,892	4,892	4,875
Wt Ratio 4 Years	4,899	4,877	4,847	4,881	4,881	4,862
Wt Ratio 5 Years	4,899	4,864	4,840	4,870	4,869	4,854
Wt Ratio 6 Years	4,899	4,864	4,828	4,849	4,838	4,812
Wt Ratio 7 Years	4,899	4,859	4,821	4,837	4,820	4,789
Max Difference		45	73	115	147	174

Buffalo-Hanover-Montrose Public School District

Kindergarten to Grade 12 Enrollment Projection Analysis

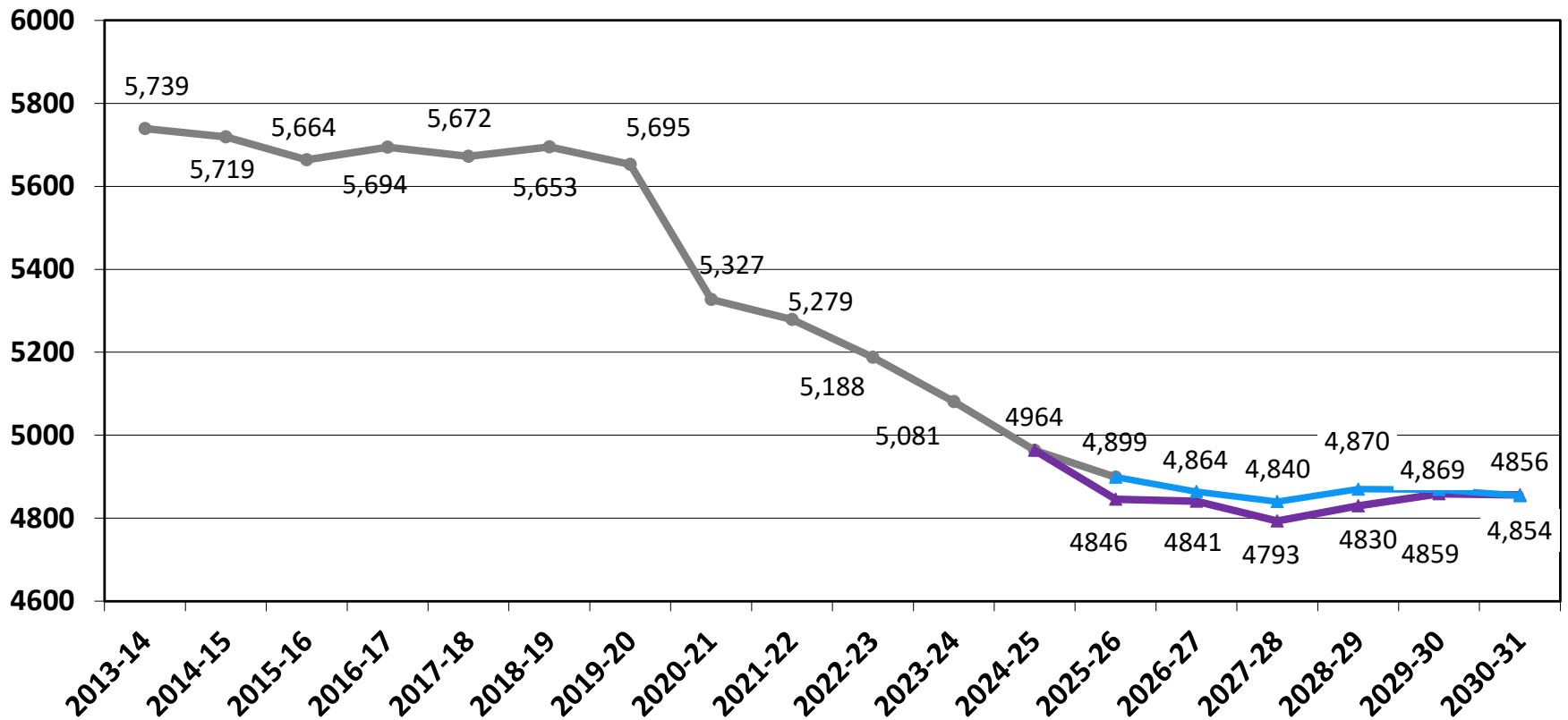
Projection Using 2-7 Year Weighted Averages



2026-27 Enrollment Factors

- Factors considered: housing market, economic conditions, Wright County births, and open enrollment.
 - Building permits by city:
 - Buffalo - 51 building permits issued during 2025 compared to 65 in 2024
 - Hanover - 70 building permits issued during 2025 compared to 43 in 2024
 - Montrose - 31 building permits issued during 2025 compared to 0 in 2024
- Four-year weighted kindergarten attendance average 19.7%
- Five year weighted average used for grades 1-12
- K-12 Enrollment 4,864
- An Increase of 23 students or 0.5% from the 2024 projection of 4,841

Historical and Projected K-12 Enrollment



Enrollment Projection by Grade

	2025-26	2026-27	2027-28	2028-29	2029-30	2030-31
K	326	359	369	373	373	381
1	367	327	362	371	375	376
2	351	376	337	373	382	386
3	367	346	372	333	369	378
4	389	369	350	375	336	372
5	331	387	369	349	374	336
6	381	329	386	368	349	374
7	366	383	332	389	371	351
8	420	372	390	338	396	378
9	424	450	400	419	363	426
10	379	419	445	395	414	358
11	395	342	376	400	355	372
12	403	405	352	387	412	366
Total	4,899	4,864	4,840	4,870	4,869	4,854

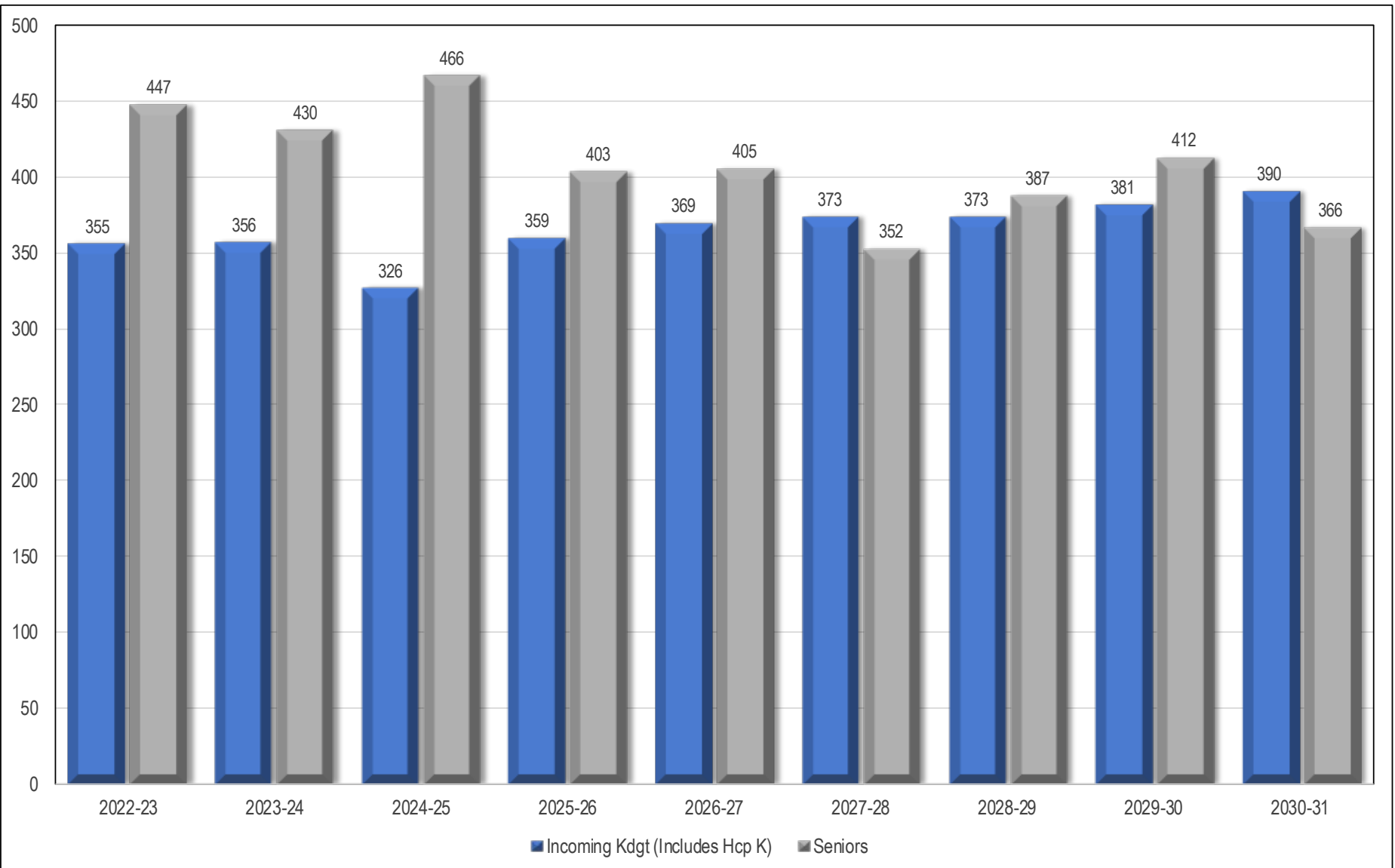
2025-26 Enrollment Projection by Grade Groupings

- With future enrollments, we need to consider building capacity:
 - BHS – 2,010
 - BCMS – 1,425
 - Elementary – 3,350

	2024-25	2025-26	2026-27	2027-28	2028-29	2029-30	2030-31
K	355	326	359	369	373	373	381
Gr. 1-5	1,785	1,805	1,805	1,790	1,801	1,836	1,848
Gr. 6-8	1,166	1,167	1,084	1,108	1,095	1,116	1,103
Gr. 9-12	1,724	1,601	1,616	1,573	1,601	1,544	1,522
Total	5,030	4,899	4,864	4,840	4,870	4,869	4,854
	-84	-131	-35	-24	30	-1	-15
	-1.47%	-2.60%	-0.71%	-0.49%	0.62%	-0.02%	-0.31%

Projection Based on 5 Year Weighted Average

Migration Kindergarten to Grade 12



Conclusion

- Recent birth rates continue to rise, with 2027 projected births expected to exceed 2,000—the first time since 2008.
- BHM's enrollment is projected to decline through the 2027–28 school year but is expected to stabilize and begin increasing in subsequent years.

2026-27 4,864