

RAYMOND F. ORR LEARNING ACADEMY

ALTERNATIVE LEARNING REIMAGINED



Current K-5 Alternative Learning Environment

Beard & Sutton

Early Intervention Kindergarten (EIK)

Opportunity Center (OC)

Special Education Behavior



Main focus

Behavior intervention and modification

Goal

Student returning to base school

Current 6-12 ALE Belle Point Center

Traditional ALE

- ▶ Serves up to 125 students grades 6-12.
- ▶ Behavior Modification - Boys Town

Typical At-Risk placement includes:

- ▶ Personal or family problems
 - ▶ Recurring absenteeism
 - ▶ Dropping out of school
 - ▶ Disruptive behavior
- Drugs

Main focus

Behavior intervention and modification

Goal

Student returning to traditional
school setting

Reimagined Raymond F. Orr Learning Academy

K-5

**Early Intervention
Kindergarten (EIK)**

Opportunity Center (OC)

**Special Education
Behavior**

**Positive Behavior
Support (PBS)**

2025-2026

6-12

Traditional ALE
2025-2026

**Conversion Charter
ALE (Academic
Center of Excellence
- ACE)**

2026-2027

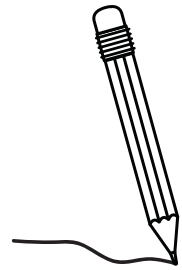
2025-2026 Secondary ALE

- **Point-Based System**
- **Minimum point amount determines student transition**
- **Each week students may earn points for:**
 - ▶ **Behavior**
 - ▶ **Academic**
 - ▶ **Counseling**
- **9 weeks**



Conversion Charter Timeline

Academic Center of Excellence



2025-2026

Letter of Intent	May 1, 2025
Charter Application (Open Enrollment/District Conversion)	June 14, 2025
DESE Internal capacity review and application revision meeting	August 1, 2025
Final Applications Due	August 16, 2024
Charter Authorizing Panel Hearings	September 19, 2025
State Board of Education Review	October 10, 2025



FSPS will open the conversion charter in the fall of 2026-2027

Waivers

Qualified teachers in every public classroom

School day hours

Grade/Subject Certification

Teacher licensure requirement

Required Instruction time

Teaching load/class size

Raymond F. Orr
Learning Academy
would apply
for waivers during the
district conversion
charter process

Academic Center of Excellence

Virtual Learning Platform ([Edmentum](#))

- Core (including AP)
- Elective Courses
- Diagnostics
- Credit Recovery
- Expelled Students Support

Extracurricular

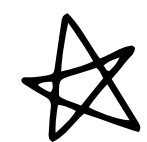
- Grades 9-12
- Activities on traditional school campus

Enrollment

- Goal 350 students
- Student Referrals
 - 70% - Parent
 - 30% - School

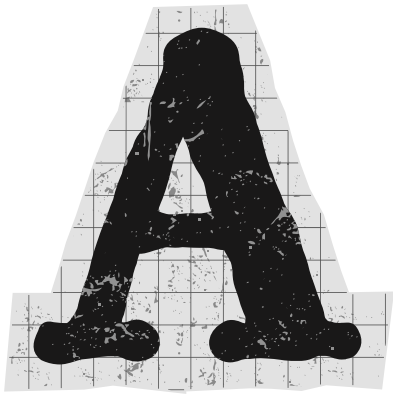
Commitment

- Minimum 1 semester
- May choose to return to traditional



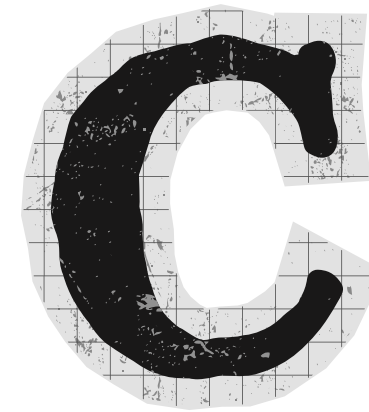
Food Service: All students are eligible to receive breakfast and lunch

Optional Schedules



A

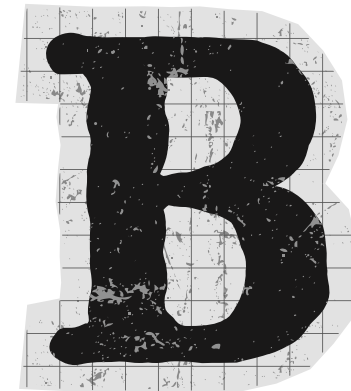
**Mon. - Thurs.
3 days
11:45 am - 2:45 pm**



C

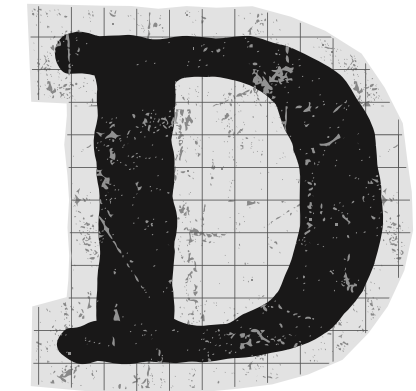
**Tues. & Thurs.
All Day
Students needing
Transportation**

**Mon. - Thurs.
3 days
8:00 am - 11:00 am**



B

**Mon. & Wed.
All Day
Students needing
Transportation**



D

Friday

- Required for students behind pace or failing 2 or more courses
- Optional for students wanting additional academic support

Probationary Students

(failing 2 or more courses)

- Choose any option
- Attend all day on Friday until passing
- 4 weeks to improve or out of program

Staffing

1 Director, 1 Assistant Director, 1 Counselor

ALE Staffing



**1 Math (6-12)
1 Science (6-12)
1 ELA (6-12)
1 Social Studies (6-12)
1 Special Education Teacher
2 Special Education ParaPro
1 ParaPro for BASE**

$$\frac{x}{a} + \frac{y}{b} = 1$$

ACE Staffing

**1 Math (6-12)
1 Science (6-12)
1 ELA (6-12)
1 Social Studies (6-12)
1 Special Education Teacher**

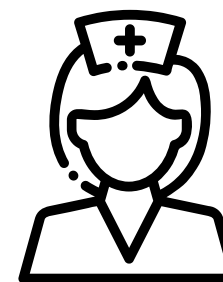
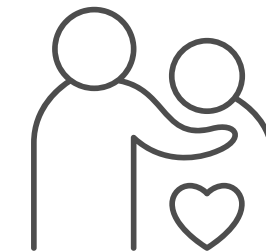
Shared Staffing



**Electives: 1 CTE, 1 PE/Health, 1 Music, 1 Fine Arts
1 Media Specialist**

Support Staff

- **1 SRO**
- **2 School Based Mental Health**
- **2 Behavior Interventionist**
- **1 Nurse**
- **2 OAAs**



Questions or Comments?

