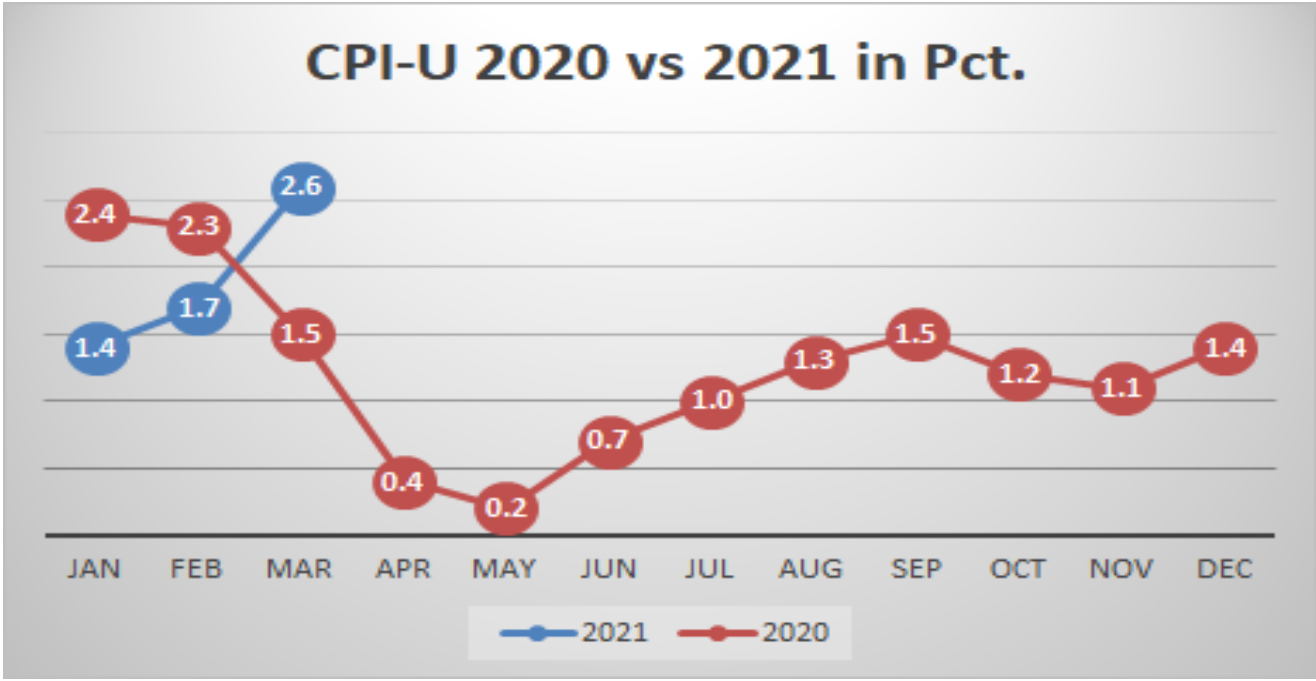


CPI-U



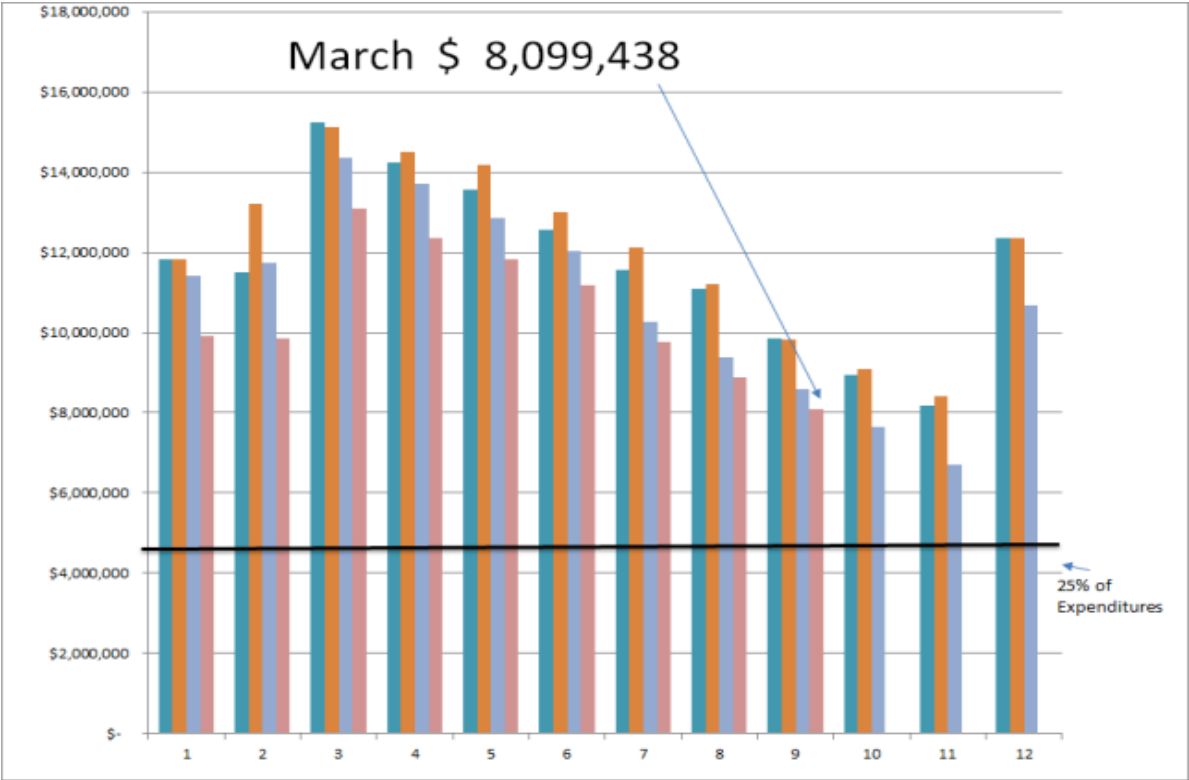
March Fund Balance

| March 2021 | Revenue | | | Expenses | | | Transfers | Fund Balances | | |
|--------------------------------------|----------------------|---------------------|--------------|----------------------|----------------------|--------------|-----------------------|----------------------|----------------------|-----------------------|
| | FY21 Budget | FY21 Actual | % Budget | FY21 Budget | FY21 Actual | % Budget | | Actual YTD | Balance as of 7/1/20 | Balance as of 3/31/21 |
| Fund Operational | | | | | | | | | | |
| 10- Education | \$ 13,067,250 | \$ 7,194,983 | 55.1% | \$ 14,107,000 | \$ 9,064,129 | 64.3% | \$ (308,278) | \$ 6,692,268 | \$ 4,514,844 | \$ (2,177,424) |
| 20- Oper & Main | \$ 2,839,000 | \$ 1,613,384 | 56.8% | \$ 1,803,000 | \$ 1,184,207 | 65.7% | \$ (700,000) | \$ 1,638,527 | \$ 1,367,704 | \$ (270,823) |
| 40- Transportation | \$ 640,000 | \$ 432,927 | 67.6% | \$ 678,000 | \$ 242,486 | 35.8% | | \$ 388,251 | \$ 578,692 | \$ 190,441 |
| 50- IMRF/SS | \$ 537,000 | \$ 274,898 | 51.2% | \$ 538,000 | \$ 340,983 | 63.4% | | \$ 248,605 | \$ 182,520 | \$ (66,085) |
| 70- Working Cash | \$ 73,000 | \$ 14,709 | 20.1% | \$ - | | | \$ - | \$ 753,648 | \$ 768,357 | \$ 14,709 |
| TOTAL | \$ 17,156,250 | \$ 9,530,901 | 55.6% | \$ 17,126,000 | \$ 10,831,805 | 63.2% | \$ (1,008,278) | \$ 9,721,299 | \$ 7,412,117 | \$ (2,309,182) |
| Net Operational Position-ISBE | | | | | | | | \$ - | | \$ (1,234,819) |
| Fund Non-Operational | | | | | | | | \$ - | | |
| 30- Debt Service | \$ 306,000 | \$ 150,360 | 49.1% | \$ 310,000 | \$ 346,794 | 111.9% | \$ 349,583 | \$ 214,539 | \$ 367,688 | \$ 153,149 |
| 60- Capital Projects | \$ 500 | \$ 21,972 | 4394.4% | \$ 1,250,000 | \$ 1,094,426 | 87.6% | \$ 700,000 | \$ 692,087 | \$ 319,633 | \$ (372,454) |
| Total | \$ 306,500 | \$ 172,332 | 56.2% | \$ 1,560,000 | \$ 1,441,220 | 92.4% | \$ 1,049,583 | \$ 906,626 | \$ 687,321 | \$ (219,305) |
| | | | | | | | | \$ - | | |
| Grand Total | \$ 17,462,750 | \$ 9,703,233 | 55.6% | \$ 18,686,000 | \$ 12,273,025 | 65.7% | \$ 41,305 | \$ 10,627,925 | \$ 8,099,438 | \$ (2,528,487) |

Financials by Revenue Source and Object (70%)

| March 2021-Revenues | | | | | | |
|-----------------------------|---------------|---------------|---------------|---------------|----------|----------|
| Source | Budget FY21 | FY21 YTD | FY20 YTD | Change | % Budget | % Change |
| Property Taxes | \$ 13,164,000 | \$ 6,512,651 | \$ 6,261,956 | \$ 250,695 | 49.47% | 4.0% |
| Other Local Sources | \$ 866,000 | \$ 586,165 | \$ 965,306 | \$ (379,141) | 67.69% | -39.3% |
| State | \$ 2,340,750 | \$ 1,702,358 | \$ 1,575,410 | \$ 126,948 | 72.73% | 8.1% |
| Federal | \$ 1,092,000 | \$ 902,060 | \$ 736,512 | \$ 165,548 | 82.61% | 22.5% |
| | | | | | | |
| All Funds | \$ 17,462,750 | \$ 9,703,234 | \$ 9,539,184 | \$ 164,050 | 55.57% | 1.7% |
| Operational Funds | \$ 17,156,250 | \$ 9,530,902 | \$ 9,382,699 | \$ 148,203 | 55.55% | 1.6% |
| | | | | | | |
| March 2021- Expenses | | | | | | |
| | Budget FY21 | FY21 YTD | FY20 YTD | Change | % Budget | % Change |
| Salaries | \$ 9,548,000 | \$ 5,940,971 | \$ 6,248,035 | \$ (307,064) | 62.22% | -4.9% |
| Benefits | \$ 2,962,000 | \$ 1,856,872 | \$ 1,851,771 | \$ 5,101 | 62.69% | 0.3% |
| Purchased Services | \$ 1,750,500 | \$ 1,154,197 | \$ 1,442,951 | \$ (288,754) | 65.94% | -20.0% |
| Supplies | \$ 1,001,000 | \$ 663,048 | \$ 695,177 | \$ (32,129) | 66.24% | -4.6% |
| Capital Outlay | \$ 1,225,000 | \$ 1,108,842 | \$ 1,667,959 | \$ (559,117) | 90.52% | -33.5% |
| Other Objects | \$ 1,965,500 | \$ 1,399,331 | \$ 1,295,132 | \$ 104,199 | 71.19% | 8.0% |
| Non-Capitalized Equipment | \$ 100,000 | \$ 54,459 | \$ 59,353 | \$ (4,894) | 54.46% | -8.2% |
| Termination Benefits | \$ 76,000 | \$ 95,304 | \$ 59,001 | \$ 36,303 | 125.40% | 61.5% |
| | | | | | | |
| All Funds | \$ 18,628,000 | \$12,273,024 | \$13,319,379 | \$(1,046,355) | 65.88% | -7.9% |
| Operational Funds | \$ 17,118,000 | \$10,831,305 | \$11,332,087 | \$ (500,782) | 63.27% | -4.4% |
| | | | | | | |
| Net Operational Position | \$ 38,250 | \$(1,300,403) | \$(1,949,388) | \$ 648,985 | | |

Fund Balance History



State Delinquency

