

# BLOOMINGDALE SCHOOL DISTRICT 13

## 2021-2022 ANNUAL REPORT



Ensuring every  
child will learn



Treating everyone with  
honor and respect



Working together  
to achieve

1354

STUDENTS

14:1

STUDENT TO CERTIFIED  
STAFF RATIO

97

FTE

27

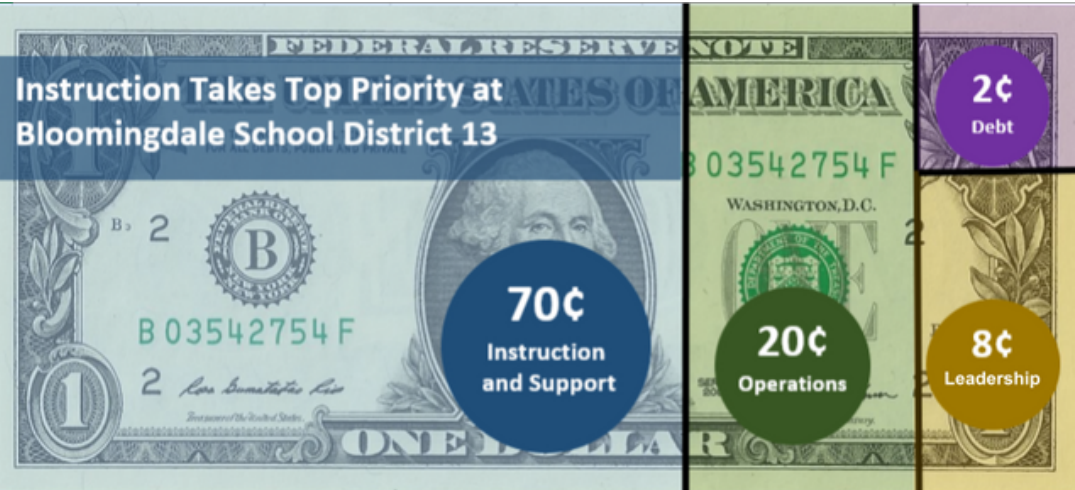
PARAPROFESSIONALS

91.4%

FUNDING FROM  
LOCAL SOURCES

3

SCHOOL  
BUILDINGS

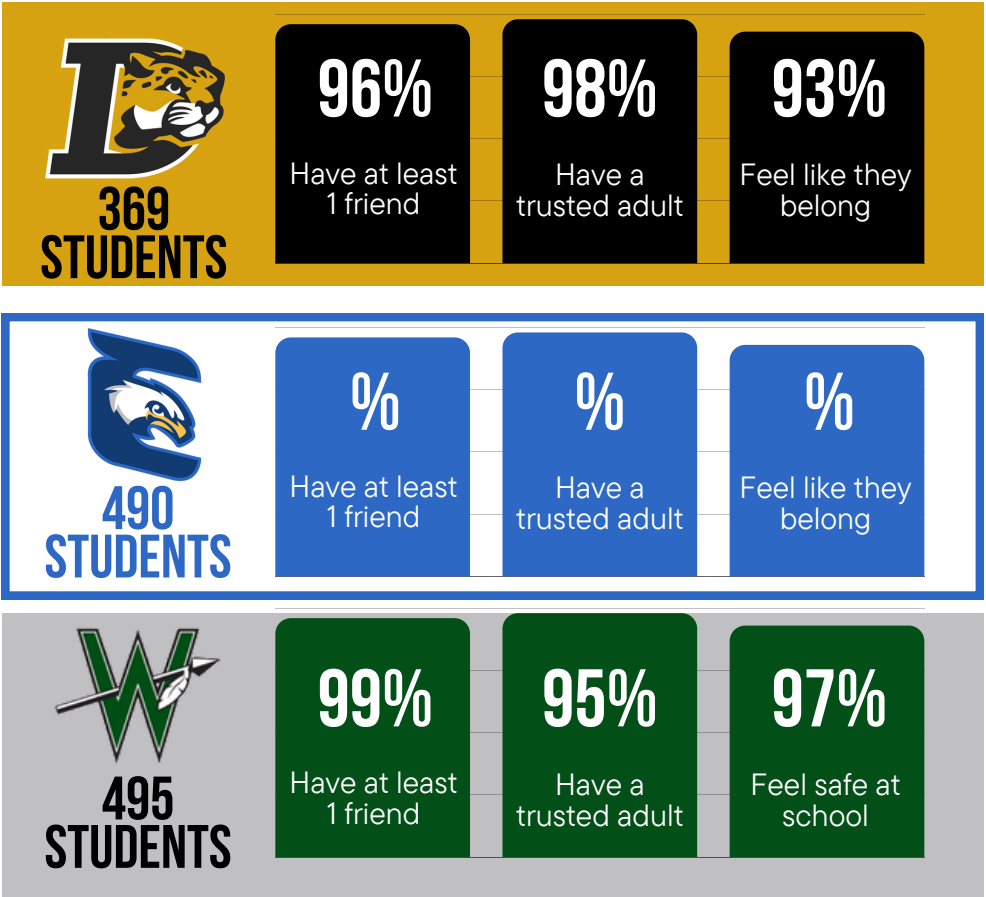


**CERTIFICATE OF EXCELLENCE IN FINANCIAL REPORTING**  
**COMPREHENSIVE ANNUAL FINANCIAL REPORT (CAFR)**  
ASSOCIATION OF SCHOOL BUSINESS OFFICIALS INTERNATIONAL  
**2016-2021**

**SCHOOL BOARD GOVERNANCE RECOGNITION**  
IASB ILLINOIS ASSOCIATION OF SCHOOL BOARDS  
**2016-2023**

To be added

MAP ELA & MATH



Comparitive Data to feeder districts